

# UGREEN MK356 Multi Mode Wireless Keyboard and Mouse Combo User Manual

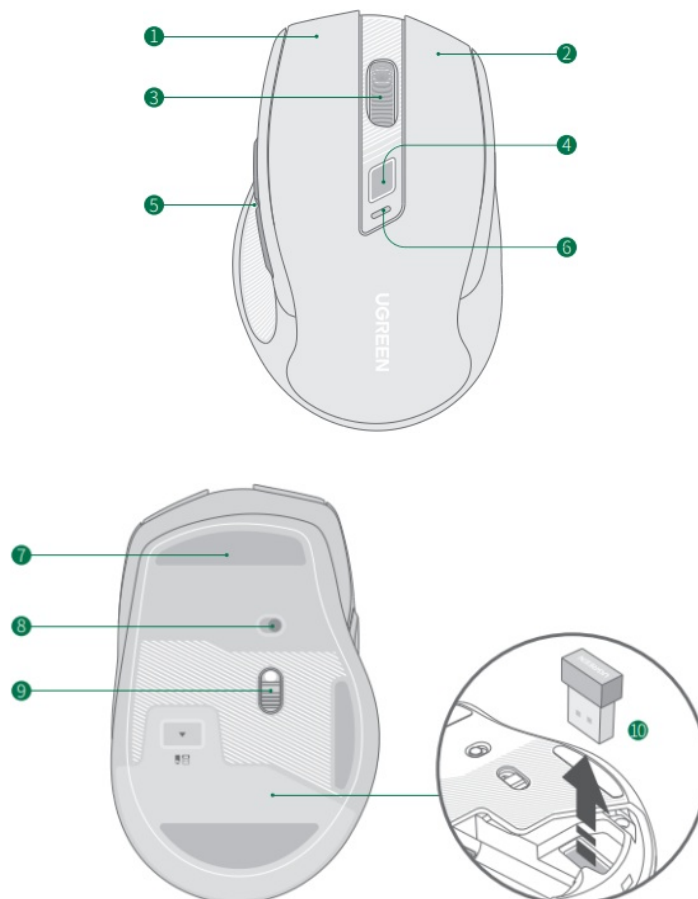
# UGREEN

Multi-mode Wireless  
Keyboard and Mouse Combo

Model: MK356

User Manual

## Product Overview

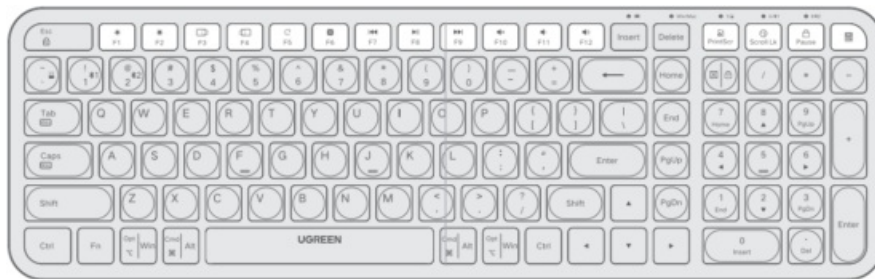


- (1) Left Button
- (2) Right Button
- (3) Scroll Wheel
- (4) Switch button(Connection mode switching, DPI adjustment)
- (5) Forward button/Back button
- (6) Indicator
- (7) Mouse Feet Film (Removable)

(8) On/Off Slider Switch

(9) Optical Sensor

(10) Receiver



Screen brightness down



Screen brightness up



Previous tab



Next tab



Refresh



Close



Previous track



Play/Pause



Next track



Mute



Volume down



Volume up



Screenshot



Emoji



Lock computer



Calculator



Battery level indicator

Win/Mac

System indicator



Num/2.4GHz indicator



Caps/Bluetooth 1 indicator

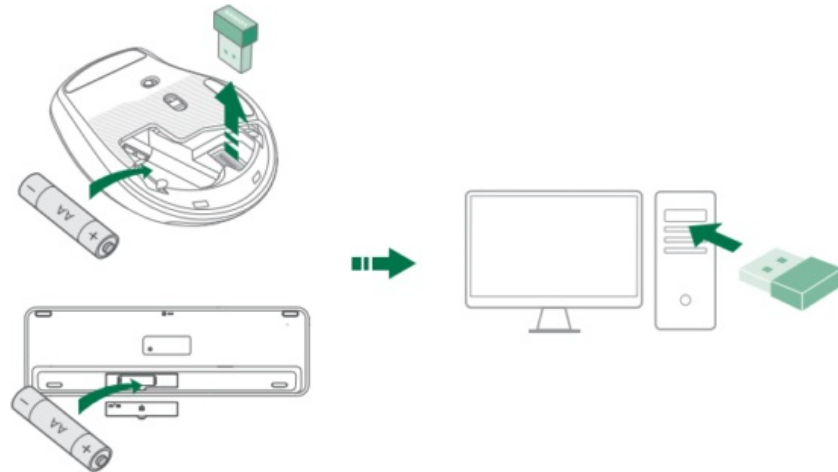


### Tip

Short press the “Fn+Esc” to enable or disable Fn Lock:

- Enable Fn lock: Short press “Fn + function key” simultaneously to activate the function shown on the key.
- Disable Fn lock: Single-click “function key” to activate the function shown on the key.

### 2.4GHz Connection (Default)



1. Open the battery compartment cover to install the battery.
2. Take the receiver out and insert them into the USB ports. Turn on the keyboard and mouse to make them ready for use.

### Tip

If the connection fails, please do as follows:

- ① Take the receiver out of the USB port.
- ② For mouse: Press and hold the left button, right button, and scroll wheel simultaneously for 3s until the green indicator starts blinking.  
For keyboard: Press and hold “Fn” + “~” simultaneously until the 2.4GHz indicator blinks twice every 1s.
- ③ Insert the receiver into the USB port.

### mouse

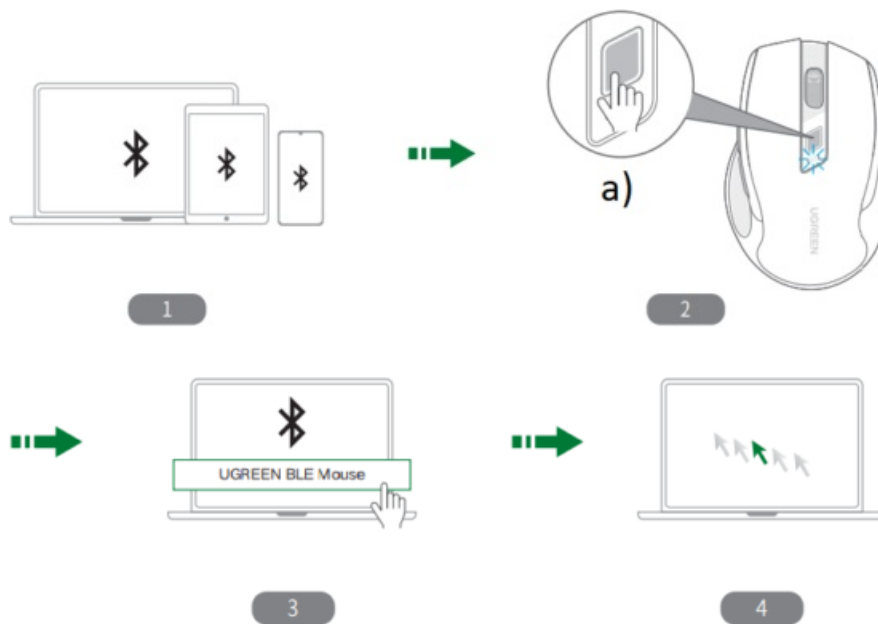


### keyboard



## Bluetooth Connection

mouse



a) Short press 1 time

1. Activate the Bluetooth on the connected device (laptop/tablet/mobile phone, etc.)
2. Turn on the mouse and press the switch button, and the indicator will flash blue when it enters Bluetooth pairing mode.
3. For initial pairing on Windows 10 or later computer, please follow the system popup windows to complete the connection. For other systems, please connect to “UGREEN BLE Mouse” in your devices’ Bluetooth list.
4. Randomly click or move the mouse to make sure it works normally.

If you cannot connect the product to your devices, please do as follows:

### Tip

If the connection fails, please do as follows:

- ① Press and hold the left button, right button, and scroll wheel simultaneously for 3s until the blue indicator starts blinking.
- ② Connect to “UGREEN BLE Mouse” in your devices’s Bluetooth list.



a) Flashes blue

b) Press and hold for 3s

## keyboard

Press and hold the key combos “Fn + 1” and “Fn + 2” to connect to two different Bluetooth devices respectively.  
For pairing the 1st Bluetooth device:



a) Press and hold the “Fn + 1” to enter pairing mode

1. Turn on the keyboard. Press and hold the “Fn + 1” simultaneously to enter pairing mode, at this time the Bluetooth 1 indicator flashes.
2. For initial pairing on Windows 10 or later computer, please follow the system popup windows to complete the connection. For other systems, please connect to “UGREEN BLE KB” in your devices’ Bluetooth list.
3. The Bluetooth 1 indicator will quickly flash 3 times when connection is completed.








Please refer to the steps above and press and hold the “Fn + 2” simultaneously if you need to pair the 2nd device.

### Note

If you want to switch to different modes or devices, please follow the steps below:

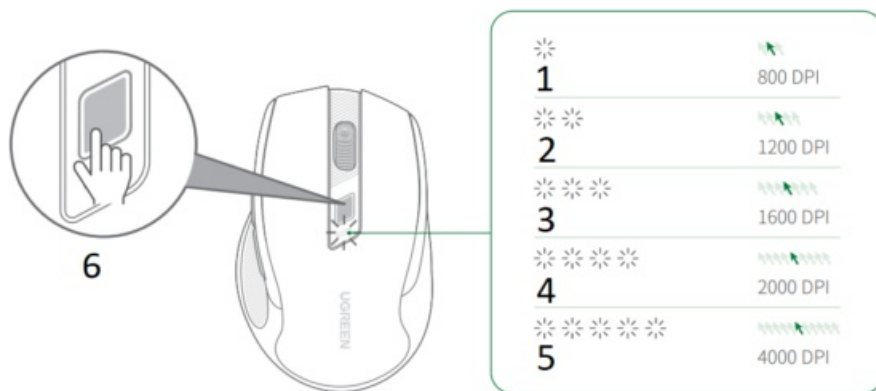
Switch to 2.4GHz device: Press and hold “Fn” + “~” simultaneously until the 2.4GHz indicator blinks.

Switch to Bluetooth device: Press and hold “Fn” + “1” or “Fn” + “2” simultaneously, and the corresponding Bluetooth indicator will blink.

Key Combos			Indicator Flashes (Upper right corner)	Connection
	+			2.4GHz Device
				Bluetooth Device 1
				Bluetooth Device 2

## DPI Adjustment (Mouse)

1. The mouse has 5-level DPI settings and defaults to 1600 DPI. You can press and hold the DPI switch button to adjust the sensitivity, and the indicator will blink differently based on different levels.
2. DPI switching order: 1600 > 2000 > 4000 > 800 > 1200.



1. LED blinks once
2. LED blinks twice
3. LED blinks 3 times
4. LED blinks 4 times
5. LED blinks 5 times
6. Press and hold for 1s

#### Windows/macOS Switching (Keyboard)

Fn	+	Tab Win	Switch to Windows	Blue "Win/Mac" system indicator will stay on for 3s
		Caps Mac	Switch to macOS	Green "Win/Mac" system indicator will stay on for 3s

#### Note

- For initial use, when you slide the side switch to "ON", the keyboard will turn on and adapt to Windows by default.
- After connecting to your device, simply press the Fn key and the corresponding indicator will turn on to display the current system and connection modes.

#### Factory Reset (Keyboard)

Press and hold "Fn + Ctrl + Delete" for 1s to reset the keyboard. All the indicators will turn on for 3s simultaneously when resetting is completed.



- a) Press and hold the “Fn + Ctrl + Delete”
- b) Turn on for 3s

## Low Battery

1. Keyboard's battery is low: battery level indicator blinks once every 2s.  
Mouse's battery is low: the indicator keeps blinking for about 5s.
2. The mouse and the keyboard will automatically turn off, and the buttons/keys have no response when the battery is too low.



## WARNING

- The product needs to have batteries (not included) installed before use. When in use, do not disassemble, hit, crush, or throw it into the fire.
- Please do not shine the light directly into human eyes.
- Discontinue use immediately if the battery is severely swollen.
- Do not use it in a high-temperature environment.
- Do not use the battery if it is immersed in water!
- Please keep this product out of the reach of children.
- If the battery has been accidentally swallowed or placed inside any part of the body, please seek medical attention immediately, or it may cause severe internal burns or other hazards.
- If the battery compartment is not securely closed, stop using the product and keep it away from children.
- Do not charge the battery. If the battery is low, please replace it in time. Do not reverse the polarity when replacing the battery.
- To prevent product damage from battery leakage and corrosion, please remove the battery if not in use for prolonged periods.
- If battery leakage occurs, avoid contact with skin or eyes. In case of contact with skin or eyes, rinse with water and seek medical attention immediately.
- Keep the dead battery out of the reach of children, and dispose of or recycle it properly according to local laws and regulations.

## Specifications



Product Name	Multi-mode Wireless Keyboard
Model	K356
Connectivity	Bluetooth/2.4GHz
Bluetooth Version	5.0
Frequency Band	2400MHz-2483.5MHz
Max. RF Output Power	4dBm (EIRP)
Transmission Distance	10m/33ft Max (no blocking)
Keyboard Key Lifecycle	8 million times
Travel Distance	3.0mm
Battery Type	Alkaline battery
Battery Model	2×AAA
Rated Voltage	3.0V
Compatible Systems	Windows 7/8.1/10/11 macOS 10.5 or later Linux Chrome OS Android 5.0 or later

## Package Contents

1×Keyboard  
1×Mouse  
1×User Manual





Product Name	Ergonomic Wireless Mouse
Model	MU006
Connectivity	Bluetooth/2.4GHz
Bluetooth Version	5.0
Frequency Band	2400MHz-2483.5MHz
Max. RF Output Power	4dBm (EIRP)
Transmission Distance	10m/33ft Max (no blocking)
DPI (Sensitivity)	800/1200/1600/2000/4000 DPI
Battery Type	Alkaline Battery
Battery Model	1×AA
Rated Voltage	1.5V
Compatible Systems	Windows 7/8.1/10/11 macOS 10.5 or later Linux Chrome OS Android 5.0 or later

The data are measured by UGREEN lab but may vary based on specific circumstances.

#### FCC Statement



This device complies with part 15 of the FCC Rules. Operation is subject to the following two conditions: (1) This device may not cause harmful interference, and (2) this device must accept any interference received, including interference that may cause undesired operation.

Warning: Changes or modifications not expressly approved by the party responsible for compliance could void the user's authority to operate the equipment.

#### FCC Radiation Exposure Statement

This equipment complies with FCC radiation exposure limits set forth for an uncontrolled environment. This transmitter must not be co-located or operating in conjunction with any other antenna or transmitter

FCC NOTE: This equipment has been tested and found to comply with the limits for a Class B digital device, pursuant to part 15 of the FCC Rules. These limits are designed to provide reasonable protection against harmful interference in a residential installation. This equipment generates, uses and can radiate radio frequency energy and, if not installed and used in accordance with the instructions, may cause harmful interference to radio communications. However, there is no guarantee that interference will not occur in a particular installation. If this equipment does cause harmful interference to radio or television reception, which can be determined by turning the equipment off and on, the user is encouraged to try to correct the interference by one or more of the following measures:

- Reorient or relocate the receiving antenna.
- Increase the separation between the equipment and receiver.
- Connect the equipment into an outlet on a circuit different from that to which the receiver is connected.
- Consult the dealer or an experienced radio/TV technician for help.

The device has been evaluated to meet general RF exposure requirement. The device can be used in portable exposure condition without restriction.

#### IC Statement

##### EN

This device complies with Industry Canada licence-exempt RSS standard(s). Operation is subject to the following two conditions:

- (1) this device may not cause interference ;
- (2) this device must accept any interference, including interference that may cause undesired operation of the device.

CAN ICES-003(B) / NMB-003(B)

#### Important WEEE Information



This symbol on the product(s) and / or accompanying documents indicates that, under the new Directive 2012/19/EU on waste electrical and electronic equipment (WEEE), product(s) used electrical and electronic equipment (WEEE) should not be mixed with general household waste. For proper treatment, recovery and recycling, please take this product(s) to designated collection points where it will be accepted free of charge. Disposing of this product correctly will help save valuable resources and prevent any potential negative effects on human health and the environment, which could otherwise arise from inappropriate waste handling. Please contact your local authority for further details of your nearest designated collection point. Penalties may be applicable for incorrect disposal of this waste, in accordance with your national legislation. For professional users in the European Union  
If you wish to discard electrical and electronic equipment (EEE), please contact your dealer or supplier for further information.

For disposal in countries outside of the European Union

This symbol is only valid in the European Union (EU). If you wish to discard this product please contact your local authorities or dealer and ask for the correct method of disposal.

#### EU Declaration of Conformity



Hereby, Ugreen Group Limited declares that the product is in compliance with Directive 2014/53/EU & 2011/65/EU. Learn more about the EU Declaration of Conformity is available at the following internet address:  
<https://www.ugreen.com/download/>

Ugreen Group Limited

Add: Ugreen Building, Longcheng Industrial Park, Longguanxi Road, Longhua, Shenzhen, China

EU REP: Ugreen Group GmbH

Add: Mannheimer Str. 13, 30880 Laatzen, Germany

#### Warranty Information

A limited 2-year warranty applies to all UGREEN products purchased from UGREEN official store or authorized

sellers. Please feel free to contact us if you run into any problems.

UK Declaration of Conformity



Hereby, Ugreen Group Limited declares that the product is in compliance with Directive UK Radio Equipment Regulations(SI 2017 No.1206) & The Restriction of the Use of Certain Hazardous Substances in Electrical and Electronic Equipment Regulations 2012 (SI 2012 No.3032). Learn more about the GB Declaration of Conformity is available at the following internet address: <https://www.ugreen.com/download/>

Ugreen Group Limited

Add: Ugreen Building, Longcheng Industrial Park, Longguanxi Road, Longhua, Shenzhen, China

UK REP: Acumen International Business Consultancy Limited

Add: 94 Ock Street, Abingdon, OX14 5DH, UK

Manuale utente
PAP 22
Raccolta carta


## Contents

### 1 Documents /

### Resources

#### 1.1 References

## Documents / Resources

	<a href="#">UGREEN MK356 Multi Mode Wireless Keyboard and Mouse Combo</a> [pdf] User Manual MK356 Multi Mode Wireless Keyboard and Mouse Combo, MK356, Multi Mode Wireless Keyboard and Mouse Combo, Wireless Keyboard and Mouse Combo, Keyboard and Mouse Combo, Mouse Combo, Combo
---	---

## References

- [User Manual](#)

[Manuals+.](#) [Privacy Policy](#)

This website is an independent publication and is neither affiliated with nor endorsed by any of the trademark owners. The "Bluetooth®" word mark and logos are registered trademarks owned by Bluetooth SIG, Inc. The "Wi-Fi®" word mark and logos are registered trademarks owned by the Wi-Fi Alliance. Any use of these marks on this website does not imply any affiliation with or endorsement.