



Contents [[hide](#)]

- [1 UGREEN M751 Multi Mode Wireless Mouse](#)
- [2 Product Specifications](#)
- [3 Product Overview](#)
- [4 2.4G Connection Default](#)
- [5 Bluetooth Connection](#)
- [6 Connection Mode Switching](#)
- [7 DP Adjustment](#)
- [8 Low Battery](#)
- [9 Specifications](#)
- [10 Package Contents](#)
- [11 Important WEEE Information](#)
- [12 EU Declaration of Conformity](#)
- [13 Declaration of Conformity](#)
- [14 Warranty Information](#)
- [15 FCC Statement](#)
- [16 FAQ](#)
 - [16.1 OCR Result\(Auto-Detect\)](#)
 - [16.2 Translated\(English\)](#)
- [17 Documents / Resources](#)
 - [17.1 References](#)

UGREEN

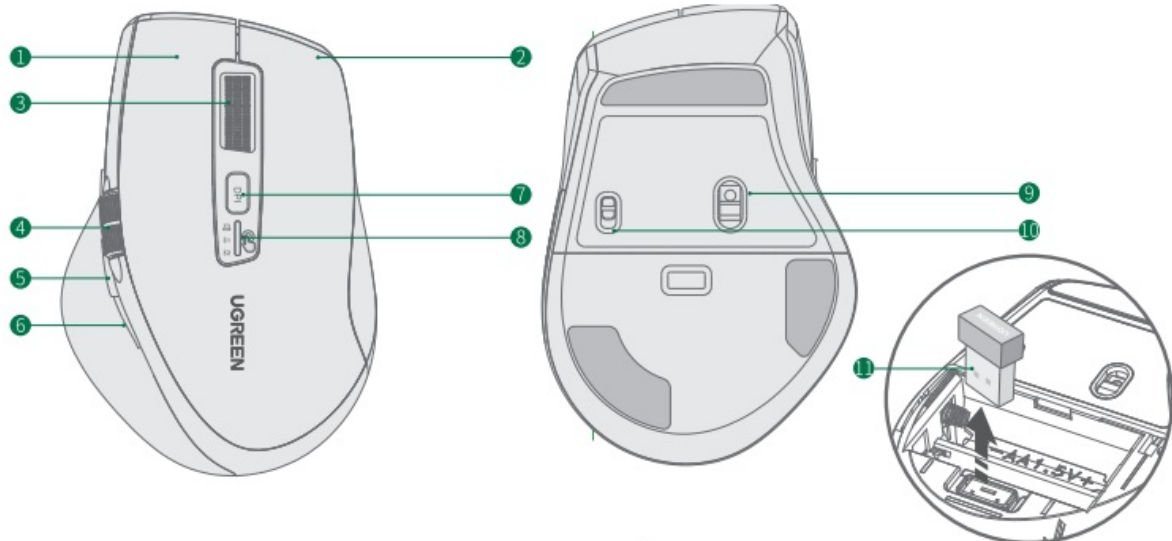
UGREEN M751 Multi Mode Wireless Mouse



Product Specifications

- Brand: Ugreen
- Model: WIFISAR A01
- Compliance: FCC Part 15, Industry Canada licence-exempt RSS standard(s)
- Warranty: Limited 2-year warranty

Product Overview



1. Left Button
2. Right Button
3. Front Scrollwheel
4. Thumb Wheel
5. Forward/Backward Button (Windows)
6. Switch Application (macOS)
7. DPI Switch Button

8. Mode Switch Button
Indicator (Connected Mode/DPI Level/Battery Level) |
9. Optical Sensor
10. Power On/Off.
11. USB Receiver

Note

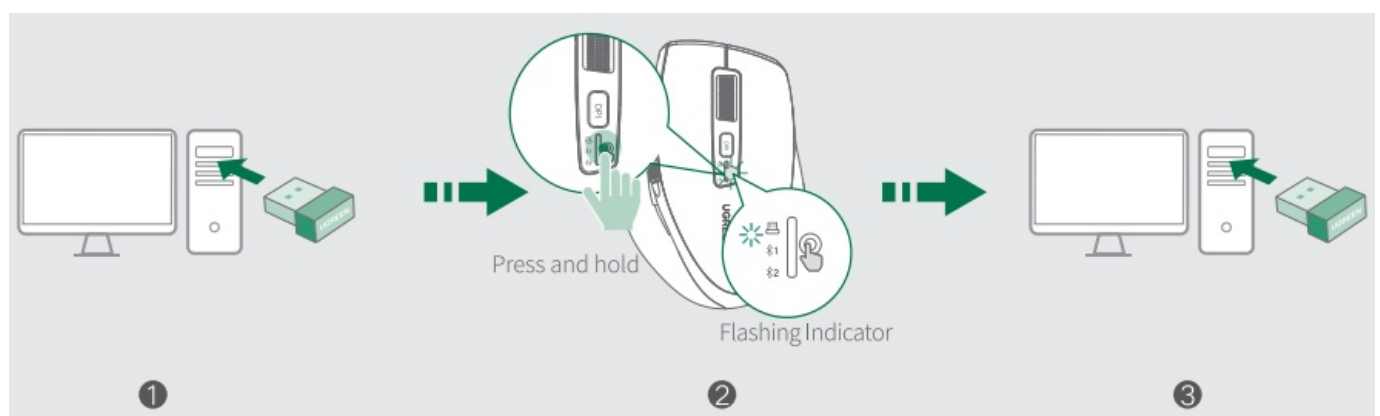
1. Front scroll wheel: speed-adaptive scroll wheel enables fast multi-line scrolling or slow line-by-line navigation.
2. Thumb wheel: scroll from side to side effortlessly with a stroke of your thumb. Please note that Windows and macOS systems scroll in opposite directions.

2.4G Connection Default



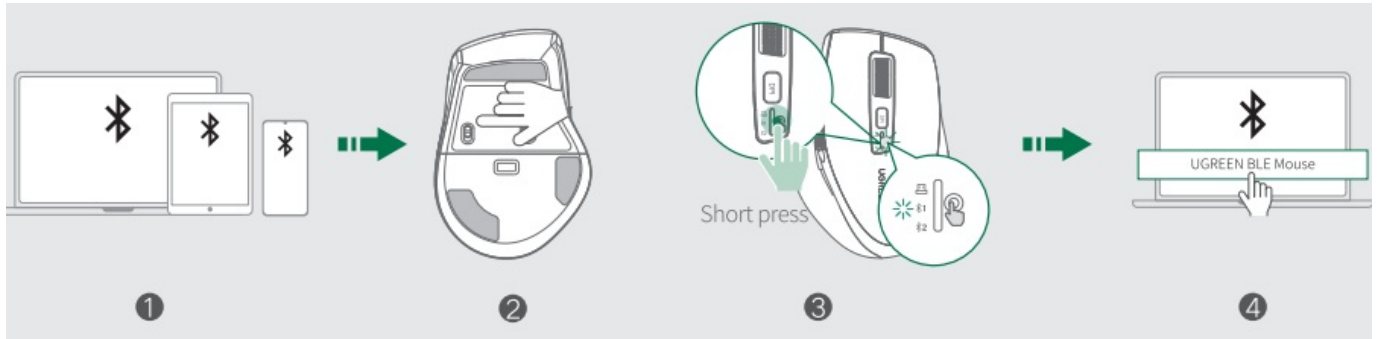
Install the battery, then turn it on. Plug the receiver into your computer, then the mouse is ready for use.

Unable to Use?



1. Unplug the receiver
2. Press and hold “Left Button+Front Scroll Wheel+Right Button” Flashing Indicator
3. Replug the receiver

Bluetooth Connection



1. Enable the device's Bluetooth
2. Power on
3. Single-press mode switch button Indicator 1 flashes
4. Connect to “UGREEN BLE Mouse”

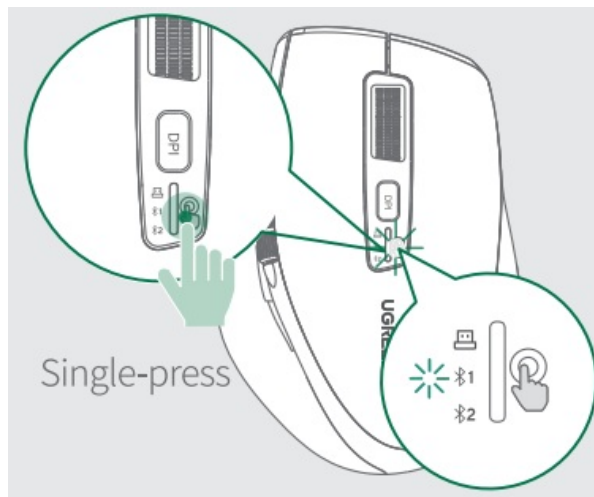
Refer to the steps above to pair the 2nd device: single-press the mode switch button, and the indicator 2 will flash.




Unable to Use?



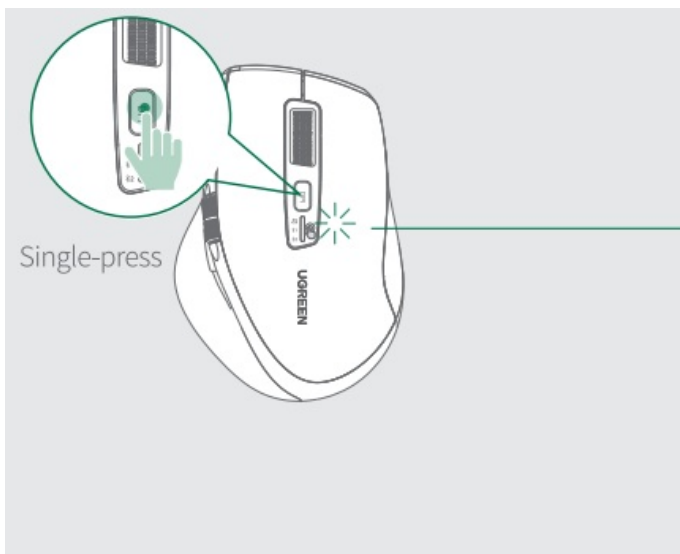
1. Press and hold the mode switch button. Indicator 1 or 2 flashes
2. Connect to “UGREEN BLE Mouse”







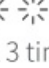


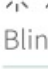






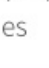



Connection Mode Switching



-  Flashing: 2.4GHz devices connected
-  Flashing: Bluetooth device 1 connected
-  Flashing: Bluetooth device 2 connected

DP Adjustment



	
Blink once	1000DPI
 	
Blink twice	1600DPI
  	
Blink 3 times	2400DPI
   	
Blink 4 times	3200DPI
    	
Blink 5 times	5000DPI

The mouse sensitivity defaults to 1600 DPI. By single-pressing the DP| switch button, you can cycle through different sensitivity levels.

Tip:

The indicator corresponding to the connected device will flash during the DPI level adjustments.

Low Battery



Flashing: Low battery

The mouse will automatically turn off, and the buttons have no response when the battery is too low.

Specifications

Model	M751
Connectivity	Bluetooth/2.4GHz
Bluetooth Version	5.4
Frequency Band	2400MHz-2483.5MHz
Max. RF Output Power	4dBm (EIRP)
Transmission Distance	10m/33ft (no blocking)
DPI (Sensitivity)	1000/1600/2400/3200/5000 DPI
Battery Type	Alkaline Battery
Battery Model	2×AA
Rated Voltage	1.5V ---
Compatible Systems	Windows 7/8.1/10/11
	macOS 10.5 or later
	Linux
	Chrome OS
	Android 5.0 or later
The data are measured by UGREEN lab but may vary based on specific circumstances.	

WARNING

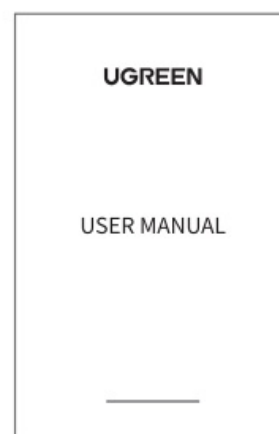
1. This product needs to have AA batteries installed before use.
When in use, do not disassemble, hit, crush, or throw it into the fire.

2. Please do not shine the light directly into human eyes.
3. Discontinue use immediately if the battery is severely swollen.
4. Do not use it in a high-temperature environment.
5. Do not use the battery if it is immersed in water!
6. The battery is hazardous. Please keep the product out of the reach of children.
7. If the battery is swallowed, it can cause severe internal burns in just 2 hours and can lead to death. If you think battery might have been swallowed or placed inside any part of the body, seek immediate medical attention.
8. If the battery compartment is not securely closed, stop using the product and keep it away from children.
9. Do not charge the battery. If the battery is low, please replace it in time. Do not reverse the polarity when replacing the battery.
10. To prevent product damage from battery leakage and corrosion, please remove the battery if not in use for prolonged periods.
11. If battery leakage occurs, avoid contact with skin or eyes. In case of contact with skin or eyes, rinse with water and seek medical attention immediately.
12. Keep the dead battery out of the reach of children, and dispose of or recycle it properly according to local laws and regulations.
13. Please store this product in a dry place, at room temperature.
14. Retain the original product literature for future reference.

Package Contents



1× Multi-mode Wireless Mouse



1× User Manual

Important WEEE Information



- This symbol on the products) and/or accompanying documents indicates that, under the new Directive 2012/19/EU on waste electrical and electronic equipment (WEEE), products) used electrical and electronic equipment (WEEE) should not be mixed with general household waste. For proper treatment, recovery and recycling, please take this product) to designated collection points where it will be accepted free of charge.
- Disposing of this product correctly will help save valuable resources and prevent any potential negative effects on human health and the environment, which could otherwise arise from inappropriate waste handling.
- Please contact your local authority for further details of your nearest designated collection point.
- Penalties may be applicable for incorrect disposal of this waste, in accordance with your national legislation.
- For professional users in the European Union
- If you wish to discard electrical and electronic equipment (EEE), please contact your dealer or supplier for further information.
- For disposal in countries outside of the European Union
- This symbol is only valid in the European Union (EU). If you wish to discard this product please contact your local authorities or dealer and ask for the correct method of disposal.

EU Declaration of Conformity



Hereby, Ugreen Group Limited declares that the product is in compliance with Directive 2014/53/EU & 2011/65/EU. Learn more about the EU Declaration of Conformity is available at the following internet address:

<https://www.ugreen.com/download/>

Ugreen Group Limited

Add: Ugreen Building, Longcheng Industrial Park, Longguanxi Road,
Longhua, Shenzhen, China

EU REP: Ugreen Group GmbH

Add: Mannheimer Str. 13, 30880 Laatzen, Germany

Declaration of Conformity



Hereby, Ugreen Group Limited declares that the product is in compliance with Directive UK Radio Equipment Regulations(SI 2017 No.1206) & The Restriction of the Use of Certain Hazardous Substances in Electrical and Electronic Equipment Regulations 2012 (SI 2012 No.3032). Learn more about the GB Declaration of Conformity is available at the following internet address: <https://www.ugreen.com/download/>

Ugreen Group Limited

Add: Ugreen Building, Longcheng Industrial Park, Longguanxi Road, Longhua,
Shenzhen, China

UK REP: Acumen International Business Consultancy Limited Add: 94 Ock Street,
Abingdon, OX14 5DH, UK

Warranty Information

A limited 2-year warranty applies to all UGREEN products purchased from UGREEN official store or authorized sellers. Please feel free to contact us if you run into any problems.

The Bluetooth® word mark and logos are registered trademarks owned by Bluetooth SIG, Inc. and any use of such marks by Ugreen Group Limited is under license. Other trademarks and trade names are those of their respective owners.

FCC Statement



This device complies with part 15 of the FCC Rules. Operation is subject to the following two conditions :

(1) This device may not cause harmful interference, and (2) this device must accept any interference received, including interference that may cause undesired operation.

Warning: Changes or modifications not expressly approved by the party responsible for compliance could void the user's authority to operate the equipment.

FCC Radiation Exposure Statement

This equipment complies with FCC radiation exposure limits set forth for an uncontrolled environment. This transmitter must not be co-located or operating in conjunction with any other antenna or transmitter.

NOTE: This equipment has been tested and found to comply with the limits for a Class B digital device, pursuant to part 15 of the FCC Rules. These limits are designed to provide reasonable protection against harmful interference in a residential installation. This equipment generates, uses and can radiate radio frequency energy and, if not installed and used in accordance with the instructions, may cause harmful interference to radio communications. However, there is no guarantee that interference will not occur in a particular installation. If this equipment does cause harmful interference to radio or television reception, which can be determined by turning the equipment off and on, the user is encouraged to try to correct the interference by one or more of the following measures:

- Reorient or relocate the receiving antenna.
- Increase the separation between the equipment and receiver.
- Connect the equipment into an outlet on a circuit different from that to which the receiver is connected.
- Consult the dealer or an experienced radio/TV technician for help.

The device has been evaluated to meet general RF exposure requirement. The device can be used in portable exposure condition without restriction.

Manufacturer: Ugreen Group Limited

Manufacturer Add: Ugreen Building, Longcheng Industrial Park, Longguanxi Road,
Longhua, Shenzhen, China
Tel: +86-755-28066530
Email: support@ugreen.com

US REP: America Ugreen Limited
Add: 108 West, 13Th Street, Wilmington, Delaware 19801, United States

Warranty Information

A limited 2-year warranty applies to all UGREEN products purchased from UGREEN official store or authorized sellers. Please feel free to contact us if you run into any problems.

IC Statement

This device complies with Industry Canada licence-exempt RSS standard(s). Operation is subject to the following two conditions:

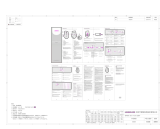
1. This device may not cause interference.
2. This device must accept any interference, including interference that may cause undesired operation of the device.

FAQ

- **What should I do if I encounter problems with the product?**

Contact Ugreen's support team for assistance. The product comes with a limited 2-year warranty, and they are available to help with any issues.

Documents / Resources

	<p>UGREEN M751 Multi Mode Wireless Mouse [pdf] User Guide</p> <p>M751, 2AQI5-M751, 2AQI5M751, M751 Multi Mode Wireless Mouse, M751, Multi Mode Wireless Mouse, Wireless Mouse, Mouse</p>
---	--

References

- [User Manual](#)

UGREEN

2AQI5-M751, 2AQI5M751, M751, M751 Multi Mode Wireless Mouse, mouse, Multi-Mode Wireless Mouse, UGREEN, Wireless Mouse

—Previous Post

UGREEN CM872 Bluetooth Audio Receiver Transmitter User Manual

Next Post—

UGREEN MU001S Portable Wireless Mouse Instruction Manual

Leave a comment

Your email address will not be published. Required fields are marked *

Comment *

Name

Email

Website

☐ Save my name, email, and website in this browser for the next time I comment.

Post Comment

Search:

e.g. whirlpool wrf535swhz

Search

This website is an independent publication and is neither affiliated with nor endorsed by any of the trademark owners. The "Bluetooth®" word mark and logos are registered trademarks owned by Bluetooth SIG, Inc. The "Wi-Fi®" word mark and logos are registered trademarks owned by the Wi-Fi Alliance. Any use of these marks on this website does not imply any affiliation with or endorsement.