

UGREEN CM520 Smart Bluetooth Finder



UGREEN CM520 Smart Bluetooth Finder User Manual

[Home](#) » [UGREEN](#) » UGREEN CM520 Smart Bluetooth Finder User Manual 

Contents

- [1 UGREEN CM520 Smart Bluetooth Finder](#)
- [2 Package Contents](#)
- [3 Specifications](#)
- [4 Warranty Information](#)
- [5 Binding](#)
- [6 Unbinding](#)
- [7 Battery Replacement](#)
- [8 Important WEEE Information](#)
- [9 Using Instructions](#)
- [10 Safety Instructions](#)
- [11 About Apple Find My](#)
- [12 FCC Statement](#)
- [13 Declaration of Conformity](#)
- [14 Documents / Resources](#)
 - [14.1 References](#)
- [15 Related Posts](#)

UGREEN

UGREEN CM520 Smart Bluetooth Finder



Package Contents

- 1X Smart Bluetooth Finder
- 1 X Case
- 1x User Manual

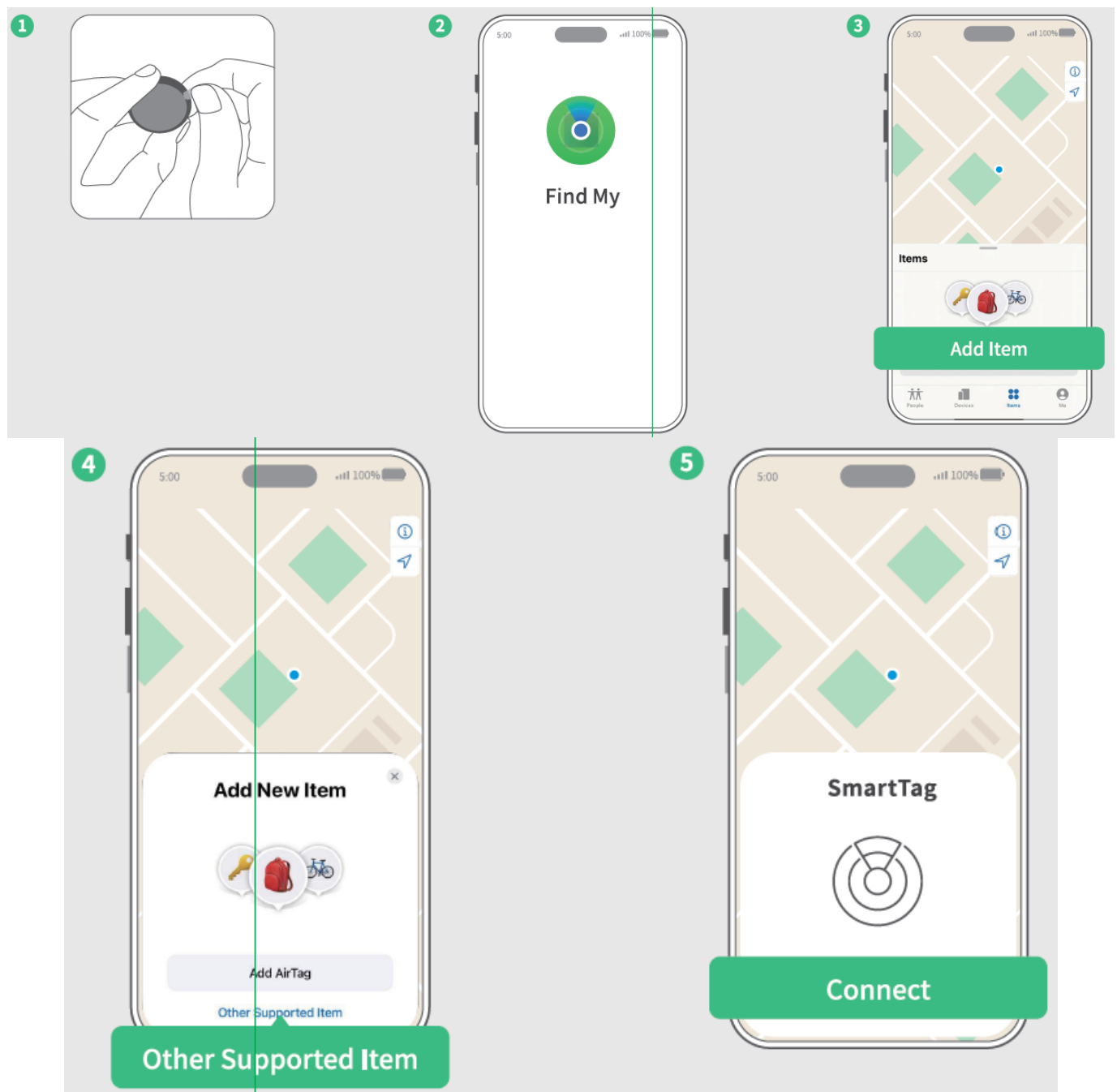
Specifications

Model	CM520
Bluetooth Version	5.2
Frequency Band	2400MHz-2483.5MHz
Max. RF Output Power	≤ 4dBm (EIRP)
Rated Capacity	240mAh
Battery Type	3V Li-Mn Button Cell
Battery Model	CR2032
Operating Time	12 Months and Higher
Compatibility	iOS devices running iOS 14.5, iPadOS 14.5 or later

Warranty Information

- limited 2-year warranty
- A limited 2-year warranty applies to all UGREEN products purchased from UGREEN official store or authorized sellers. Please feel free to contact us if you run into any problems.

Binding



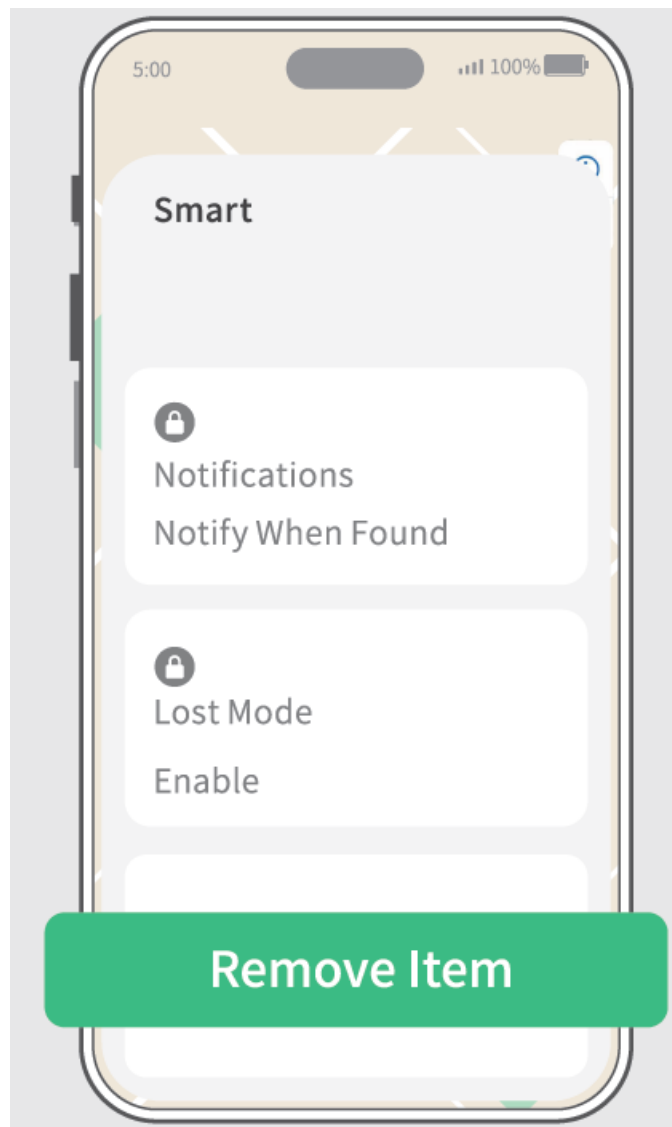
1. Remove the insulating film
2. Bring the Smart Bluetooth Finder near your iPhone, and enable the "Find My" app on your iPhone
3. Go to "Items" > "Add Item"
4. Click "Other Supported Item"
5. Click "Connect" and rename it

Tips

- This Smart Bluetooth Finder is only compatible with iOS devices running iOS 14.5, iPadOS 14.5 or later.

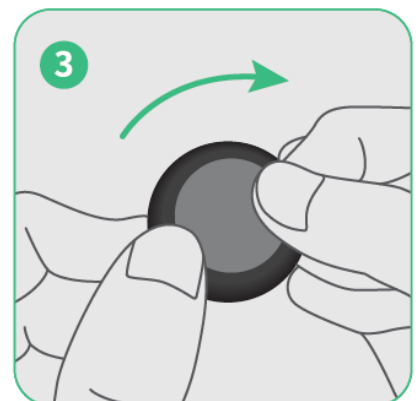
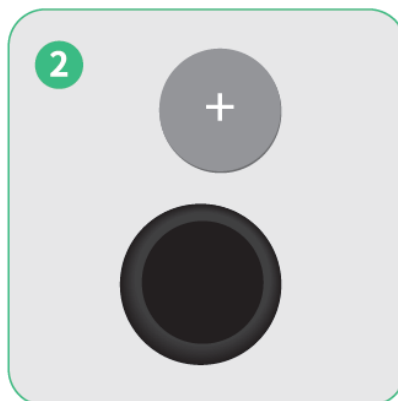
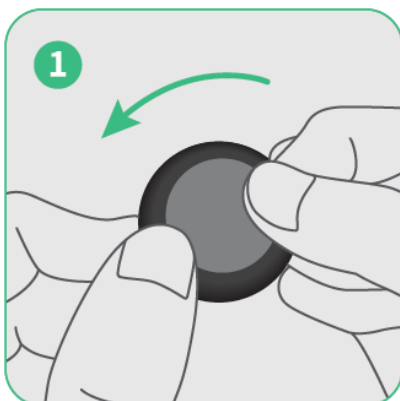
- Please make sure that the phone's Bluetooth is enabled when in use.

Unbinding



1. Bring the Smart Bluetooth Finder near your iPhone, enable the "Find My" app, click the "Items" tab, then select "SmartTag".
2. Click "Remove Item" >"Remove" to confirm.

Battery Replacement



1. Turn counterclockwise to open
2. Put the battery in with the positive polarity (+) facing up
3. Turn clockwise to close

Tip

- Please replace the battery with the same type (CR2032), otherwise there may be a risk of fire or electric shock.




WARNING

- This product has a built-in 3V Li-Mn button cell battery. Do not disassemble, hit, crush, or throw it into the fire.
- Discontinue use immediately if the battery is severely swollen.
- Do not use it in a high-temperature environment.
- Do not use the battery if it is immersed in water!
- Please keep this product out of the reach of children.
- If the battery has been accidentally swallowed or placed inside any part of the body, please seek medical attention immediately, or it may cause severe internal burns or other hazards.
- If the battery compartment is not securely closed, stop using the product and keep it away from children.
- Do not charge the battery. If the battery is low, please replace it in time. Do not reverse the polarity when replacing the battery.
- To prevent product damage from battery leakage and corrosion, remove the battery if not in use for prolonged periods.
- If battery leakage occurs, avoid contact with skin or eyes. In case of contact with skin or eyes, rinse with water and seek medical attention immediately.
- Keep the dead battery out of the reach of children, and dispose of or recycle it properly according to local laws and regulations.

Important WEEE Information



-  This symbol on the products) and / or accompanying documents indicates that, under the new Directive 2012/19/EU on waste electrical and electronic equipment (WEEE), products) used electrical and electronic equipment (WEEE) should not be mixed with general household waste. For proper treatment, recovery and recycling, please take this products) to designated collection points where it will be accepted free of charge.
- Disposing of this product correctly will help save valuable resources and prevent any potential negative effects on human health and the environment, which could otherwise arise from inappropriate waste handling.
- Please contact your local authority for further details of your nearest designated collection point.
- Penalties may be applicable for incorrect disposal of this waste, in accordance with your national legislation.

For professional users in the European Union

- If you wish to discard electrical and electronic equipment (EEE), please contact your dealer or supplier for further information.
- For disposal in countries outside of the European Union
- This symbol is only valid in the European Union (EU). If you wish to discard this product please contact your local authorities or dealer and ask for the correct method of disposal.

Using Instructions

Find Smart Bluetooth Finder When It's Nearby

1. Open Find My app and select the "Items" tab or open the Find Items app on your Apple Watch.
2. Tap on your Smart Bluetooth Finder from the list.
3. Tap "Play Sound" to make your Smart Bluetooth Finder beep.
4. Tap "Stop Sound" to stop the beeps once you find.

Find Smart Bluetooth Finder's Location

1. Open Find My app and select the "Items" tab or open the Find Items app on your Apple Watch.
2. Tap on your Smart Bluetooth Finder from the list.
3. Your Smart Bluetooth Finder's location will appear on the Map with a timestamp of when the item was located.
4. To navigate to the Smart Bluetooth Finder's location, tap "Directions" to open Apple Maps.

Enabling "Notify When Left Behind"

1. Open Find My app and select the "Items" tab or open the Find Items app on your Apple Watch.
2. Tap on your Smart Bluetooth Finder from the list.
3. Under "Notifications" enable the "Notify When Left Behind" toggle.
4. You will receive a notification when you leave your Smart Bluetooth Finder behind and it's no longer in range of your device.

Enabling "Notify When Found"

1. Under "Notifications", enable the "Notify When Found" toggle.
2. When your Smart Bluetooth Finder is seen by another Find My network device, you will receive a notification of its location.

Note

- "Notify When Found" can only be activated when your Smart Bluetooth Finder is out of range.

Unwanted Tracking

If any Find My network accessory separated from its owner is seen moving with you over time, you'll be notified in one of two ways:

1. If you have an iPhone, iPad, Find My will send a notification to your Apple device. This feature is available on iOS or iPadOS 14.5 or later.
2. If you don't have an iOS device or a smartphone, a Find My network accessory that isn't with its owner for a period of time will emit a sound when it's moved. These features were created specifically to discourage people from trying to track you without your knowledge.

Safety Instructions

- Avoid moisture, Do not use aerosol, solvent or abrasive agents to clean the product.
- Keep out of reach of children to avoid accidental swallowing.
- The product has built-in battery, please stop use when it is swollen.
- Do not expose the product to excessive temperature.
- Stop using when the product is submerged.

About Apple Find My

The Apple Find My network provides an easy, secure way to locate compatible personal items using the Find My app on your iPhone, iPad, Mac, or the Find Items app on Apple Watch.

To use the Apple Find My app to locate this item, the latest version of iOS, iPadOS, or macOS is recommended.

The Find Items app on Apple Watch requires the latest version of watchOS.

Use of the Works with Apple badge means that a product has been designed to work specifically with the technology identified in the badge and has been certified by the product manufacturer to meet Apple Find My network product specifications and requirements. Apple is not responsible for the operation of this device or use of this product or its compliance with safety and regulatory standards.

Apple, Apple Find My, Apple Watch, Find My, iPhone, iPad, iPadOS, Mac, macOS and watchOS are trademarks of Apple Inc.

FCC Statement

This device complies with part 15 of the FCC Rules. Operation is subject to the following two conditions:

1. This device may not cause harmful interference
2. This device must accept any interference received, including interference that may cause undesired operation.

Warning

- Changes or modifications not expressly approved by the party responsible for compliance could void the user's authority to operate the equipment.

Radiation Exposure Statement

This equipment complies with FCC radiation exposure limits set forth for an uncontrolled environment. This transmitter must not be co-located or operating in conjunction with any other antenna or transmitter.

FCC NOTE: This equipment has been tested and found to comply with the limits for a Class B digital device, pursuant to part 15 of the FCC Rules. These limits are designed to provide reasonable protection against harmful interference in a residential installation. This equipment generates, uses and can radiate radio frequency energy and, if not installed and used in accordance with the instructions, may cause harmful interference to radio communications. However, there is no guarantee that interference will not occur in a particular installation. If this

equipment does cause harmful interference to radio or television reception, which can be determined by turning the equipment off and on, the user is encouraged to try to correct the interference by one or more of the following measures:

- Reorient or relocate the receiving antenna.
- Increase the separation between the equipment and receiver.
- Connect the equipment into an outlet on a circuit different from that to which the receiver is connected.
- Consult the dealer or an experienced radio/TV technician for help.

The device has been evaluated to meet general RF exposure requirements. The device can be used in portable exposure conditions without restriction.

IC Statement

This device complies with Industry Canada license-exempt RSS standard (s). Operation is subject to the following two conditions:

1. this device may not cause interference ;
2. this device must accept any interference, including interference that may cause undesired operation of the device.

Declaration of Conformity

UK CA

Hereby, Ugreen Group Limited declares that the product is in compliance with Directive UK Radio Equipment Regulations(SI 2017 No.1206)& The Restriction of the Use of Certain Hazardous Substances in Electrical and Electronic Equipment Regulations 2012 (SI 2012 No.3032). Learn more about the GB Declaration of Conformity is available at the following internet address: <https://www.ugreen.com/download/>

Ugreen Group Limited

- **Add:** Ugreen Building, Longcheng Industrial Park, Longguanxi Road, Longhua, Shenzhen, China
- **UK REP:** Acumen International Business Consultancy Limited
- **Add:** 94 Ock Street, Abingdon, OX14 5DH, UK

CE

Hereby, Ugreen Group Limited declares that the product is in compliance with Directive 2014/53/EU & 2011/65/EU. Learn more about the EU Declaration of Conformity is available at the following internet address: <https://www.ugreen.com/download/>

Ugreen Group Limited

- **Add:** Ugreen Building, Longcheng Industrial Park, Longguanxi Road, Longhua, Shenzhen, China
- **EU REP:** Ugreen Group GmbH
- **Add:** Mannheimer Str. 13, 30880 Laatzen, Germany

Documents / Resources

	UGREEN CM520 Smart Bluetooth Finder [pdf] User Manual CM520, CM520 Smart Bluetooth Finder, Smart Bluetooth Finder, Bluetooth Finder, Finder
--	--

References

- [User Manual](#)

[Manuals+](#), [Privacy Policy](#)

This website is an independent publication and is neither affiliated with nor endorsed by any of the trademark owners. The "Bluetooth®" word mark and logos are registered trademarks owned by Bluetooth SIG, Inc. The "Wi-Fi®" word mark and logos are registered trademarks owned by the Wi-Fi Alliance. Any use of these marks on this website does not imply any affiliation with or endorsement.