



UGREEN CM403 Bluetooth Transmitter/Receiver Manual: Connect & Access Modes

[Home](#) » [UGREEN](#) » **UGREEN CM403 Bluetooth Transmitter/Receiver Manual: Connect & Access Modes**

The UGREEN CM403 Bluetooth Audio Receiver/Transmitter is a versatile device that allows users to connect their devices wirelessly to other Bluetooth-enabled gadgets. This user manual provides detailed instructions on how to use the device and its various modes, including Bluetooth receiving and transmitting modes. The manual covers everything from power on/off to dual connectivity, and even includes information on battery level and charging. The product overview section provides a clear visual representation of the device's buttons and ports, making it easy for users to identify the different components. Additionally, the manual includes important safety notes and information on how to properly dispose of the device according to WEEE regulations. With this comprehensive user manual, users can easily connect their devices to other Bluetooth-enabled gadgets and enjoy wireless audio streaming without any hassle.

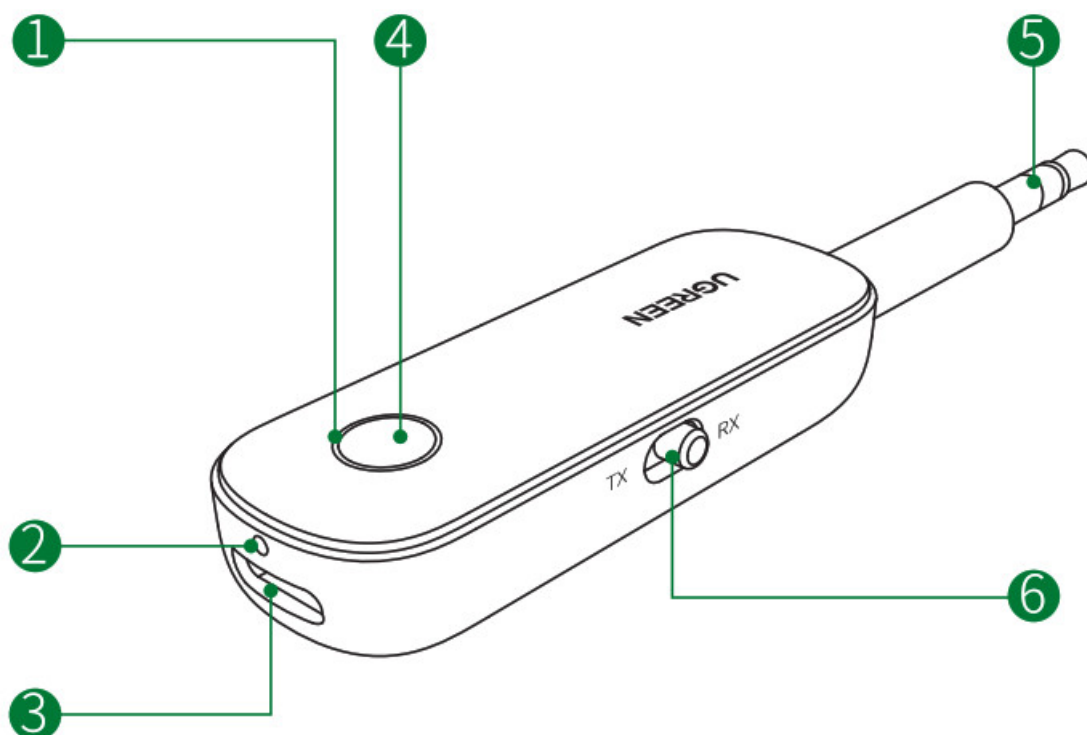
UGREEN

Bluetooth Audio Receiver/Transmitter
Model: CM403 | P/N: 80893
User Manual

Contents [[hide](#)

- [1 Product Overview](#)
- [2 Power On/Off](#)
- [3 Bluetooth Receiving Mode](#)
- [4 Dual Connectivity](#)
- [5 Bluetooth Transmitting mode](#)
- [6 Function & Operation\(Receiving mode\)](#)
- [7 Battery Level & Charge](#)
- [8 Indicators](#)
- [9 Factory Reset](#)
- [10 Safety Notes](#)
- [11 Specifications](#)
- [12 Package Contents](#)
- [13 Important WEEE Information](#)
- [14 Warranty Information](#)
- [15 Contact Us](#)
- [16 FAQs](#)
- [17 Documents / Resources](#)
- [18 Related Posts](#)

Product Overview



- 1. LEO indicator
- 2. Microphone jack
- 3. USB-C female: charging port
- 4. Multifunction button: power on&off/music play/call management/factory reset/language switch
- 5. 3.5mm connector male
- 6. Slide switch: switch between RX and 'IX modes

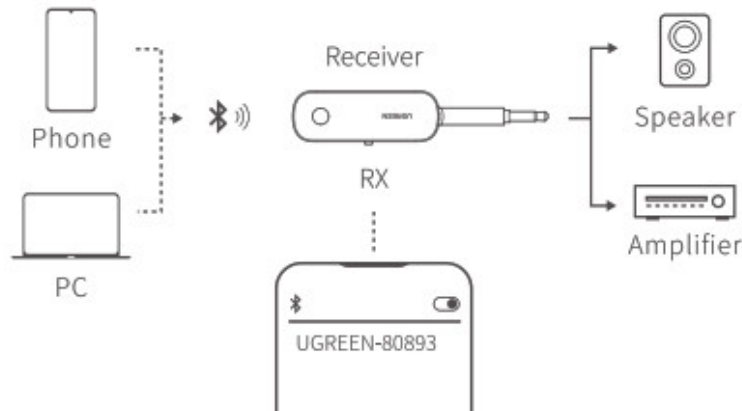
Power On/Off

Power on:

When the power is off, press and hold the multifunction button for 3 seconds, the indicator lights up blue for 1 second and off. **Power off:**

When the power is on, press and hold the multifunction button for 3 seconds, the indicator lights up red for 1 second and off.

Bluetooth Receiving Mode



Voice Prompts Language Switch

In receiving mode, the voice prompts switch between Chinese and English are available. Details as follows: In pairing mode (red&blue alternate blinking), short press the multifunction button three times.

Bluetooth Connection

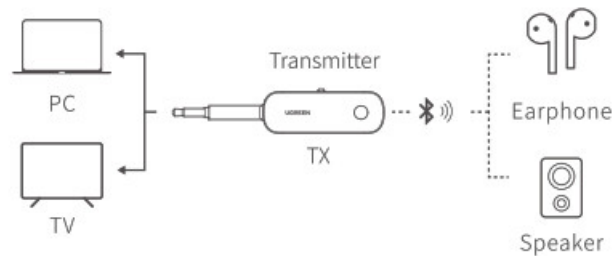
- Slide the power button to the “RX” position to enter Bluetooth receiving mode.
- Insert the product into the AUX port of the Bluetooth receiver (like a speaker) firstly, then press and hold the multifunction button for 3 seconds to power on and ready for pairing.
- Enable Bluetooth access on your phone, search “UGREEN-80893” and click it to connect. The voice prompt of “flew7, EAV(Bluetooth connected)” indicates the connection is established.

Notice: In receiving mode, insert the product into the AUX jack of your car, and powered by the provided USB cable, the product will automatically power on once you start your car.

Dual Connectivity

- Firstly, follow the “Bluetooth Connection” steps to connect the product to Phone A, then turn off Bluetooth on Phone A once connected.
- Secondly, connect the product to Phone B Bluetooth.
- Thirdly, turn on Phone A Bluetooth access, it will reconnect to the product automatically.
- Finally, both Phone A and Phone B are connected to the product simultaneously.

Bluetooth Transmitting mode



Bluetooth Connection

- Slide the power button to “DC position to enter Bluetooth transmitting mode.
- Insert the product into the AUX port of the Bluetooth transmitter (like a computer) firstly, then press and hold the multifunction button for 3 seconds to power on and ready for pairing.
- Turn on your receiving devices (Bluetooth earphones/speakers) to enter pairing mode.
- The product will automatically pair with and connect to your device.

Dual Connectivity

In transmitting mode, this product is enabled to connect to two Bluetooth receivers and output audio simultaneously. Classified as Device A and Device B, operation steps as below:

- Please refer to the above step “Bluetooth Connection” and connect the product to Device A.
- Short press the multifunction button twice to enter pairing mode, accompanying a blue light flashes twice per second. Re-open Bluetooth on Device B, the connection between transmitter and Device B will be established.
- Play music to confirm both A/B devices have audio output.

Notices:

- If both A/B devices have no audio output or only one has, please reboot the product to reconnect to the two devices. If fails again, please change the connection order of the A/B device.
- The available distance between Device A and Device B is within 5m.

Notes

- Auto-reconnection: This product will automatically connect to the latest two paired devices when turned on the next time.
- During connecting, the available distance between this product and the Bluetooth device is within 10m.
- If fails repeatedly, please restart the product or Bluetooth device.
- Mandatory pairing: Short press the multifunction button twice.
- Mandatory reconnection: In pairing mode, short press the multifunction button once to activate a command.
- Connection timeout: In pairing or reconnection mode, if the product is not connected to a Bluetooth device, it will turn off automatically after 5 minutes.

Function & Operation(Receiving mode)

Music Play Play/Pause: Short press the multifunction button once. Communication Management Answer/End a call: Short press the multifunction button once. Reject a call: Press and hold the multifunction button for 2 seconds.

Battery Level & Charge

- Battery status: In receiving mode, the battery level will be shown in the status bar on your smartphone (Not available in all smartphone models).
- Low battery status: low battery prompts to indicate the product has less than a 10% charge. Please charge the product with provided cable and a specified 5V/1A power adapter.

Status	LED indicator
Battery Low	Slow blinking red
Charging	Solid red
Fully Charged	Solid blue

Indicators

Status	LED indicator
Pairing Mode	Light up blue 1 sec over red & blue alternate blinking
Auto-reconnection	Light up blue 1 sec over blinking blue once per 5 seconds
Power Off	Light up red 1 sec and turn off
Bluetooth Pairing	Red & Blue alternate blinking
Bluetooth Connected	Blinking blue once per 10 seconds

Factory Reset

In off mode, press and hold the multifunction button for 10 seconds, the indicator will glow solid blue for 2.5 seconds, indicating a successful reset.

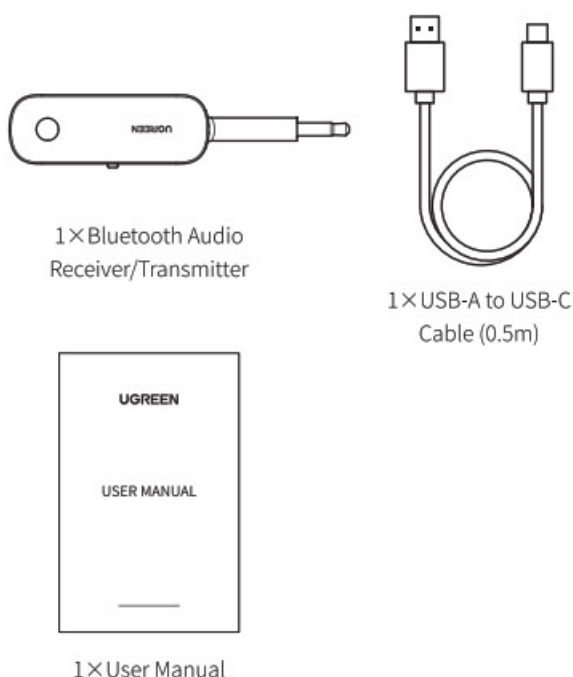
Safety Notes

- This product has a built-in lithium battery. Do not disassemble, crush, or expose to fire.
- Stop using it if the battery is swollen.
- Do not expose the product to excessive temperature.
- Stop using it after being soaked in water.

Specifications

Model	CM403
Input port	3.5mm audio
Frequency range	2400MHz-2483.5MHz
Frequency response	20Hz-20kHz
SNR	>90dB
THD	<0.1%
Codec	RX mode: SBC, MC TX mode: SBC
Battery type	Li-Po
Battery rated capacity	145mAh 3.7V
Limited charging voltage	5.25V
Battery charging time	1. Shrs
Battery operating time	RX mode: 5.5hrs TX mode: 8hrs
Transmission distance	10m

Package Contents



Important WEEE Information



This symbol on the product(s) and/or accompanying documents indicates that, under the new Directive 2012/19/EU on waste electrical and electronic equipment (WEEE), product(s) used electrical and electronic equipment (WEEE) should not be mixed with general household waste. For proper treatment, recovery and recycling, please take this product(s) to designated collection points where it will be accepted free of charge. Disposing of this product correctly will help save valuable resources and prevent any potential negative effects on human health and the environment, which could otherwise arise from inappropriate waste handling. Please contact your local authority for further details of your nearest designated collection point. Penalties may be applicable for incorrect disposal of this waste, in accordance with your national legislation.

For professional users in the European Union

If you wish to discard electrical and electronic equipment (EEE), please contact your dealer or supplier for further information.

For disposal in countries outside of the European Union, This symbol is only valid in the European Union (EU). If you wish to discard this product please contact your local authorities or dealer and ask for the correct method of disposal.

Warranty Information

A limited 2-year warranty applies to all UGREEN products purchased from UGREEN official store or authorized sellers. Please feel free to contact us if you run into any problems.

Contact Us

For Amazon Marketplaces

North America

US: support.us@ugreen.com

MX: support.mx@ugreen.com

Europe UK: support.uk@ugreen.com

FCC Statement

This device complies with Part 15 of the FCC rules. Operation is subject to the following two conditions: (1) this device may not cause harmful interference, and (2) this device must accept any interference received, including interference that may cause undesired operation. Warning: Changes or modifications not expressly approved by the party responsible for compliance could void the user's authority to operate the equipment. Learn more about the EU Declaration of Conformity: <https://www.ugreen.com/download/>

FCC Radiation Exposure Statement This equipment complies with FCC radiation exposure limits set forth for an uncontrolled environment. This transmitter must not be co-located or operating in conjunction with any other antenna or transmitter. Note: This equipment has been tested and found to comply with the limits for a Class B digital device, pursuant to part 15 of the FCC Rules. These limits are designed to provide reasonable protection against harmful interference in a residential installation. This equipment generates uses and can radiate radio frequency energy and, if not installed and used in accordance with the instructions, may cause harmful interference to radio communications. However, there is no guarantee that interference will not occur in a particular installation. If this equipment does cause harmful interference to radio or television reception, which can be determined by turning the equipment off and on, the user is encouraged to try to correct the interference by one or more of the following measures:

—Reorient or relocate the receiving antenna.

—Increase the separation between the equipment and receiver.

Connect the equipment into an outlet on a circuit different from that to which the receiver is connected.

—Consult the dealer or an experienced radio/TV technician for help. Learn more about the EU Declaration of Conformity: <https://www.ugreen.com/download/>

RF warning statement: The device has been evaluated to meet general RF exposure requirements.

IC

This device complies with Industry Canada licence-exempt RSS standard(s). Operation is subject to the following two conditions: (1) this device may not cause interference, and (2) this device must accept any interference, including interference that may cause undesired operation of the device."

FCC ID:2AQ15-CM403

IC:26850-CM403

CAN ICES-003(B) / NMB-003(B)



FAQS

What is the UGREEN CM403 Bluetooth Audio Receiver/Transmitter?

The UGREEN CM403 Bluetooth Audio Receiver/Transmitter is a versatile device that allows users to connect their devices wirelessly to other Bluetooth-enabled gadgets.

How do I power on/off the UGREEN CM403 Bluetooth Audio Receiver/Transmitter?

To power on, press and hold the multifunction button for 3 seconds until the indicator lights up blue for 1 second. To power off, press and hold the multifunction button for 3 seconds until the indicator lights up red for 1 second.

How do I connect the UGREEN CM403 Bluetooth Audio Receiver/Transmitter in Bluetooth receiving mode?

Slide the power button to the "RX" position to enter Bluetooth receiving mode. Insert the product into the AUX port of the Bluetooth receiver (like a speaker) firstly, then press and hold the multifunction button for 3 seconds to power on and ready for pairing. Enable Bluetooth access on your phone, search "UGREEN-80893" and click it to connect.

How do I switch between Chinese and English voice prompts in receiving mode?

In pairing mode (red&blue alternate blinking), short press the multifunction button three times.

How do I connect two devices simultaneously to the UGREEN CM403 Bluetooth Audio Receiver/Transmitter?

Firstly, follow the "Bluetooth Connection" steps to connect the product to Phone A, then turn off Bluetooth on Phone A once connected. Secondly, connect the product to Phone B Bluetooth. Thirdly, turn on Phone A Bluetooth access, it will reconnect to the product automatically. Finally, both Phone A and Phone B are connected to the product simultaneously.

How do I enter Bluetooth transmitting mode?

Slide the power button to the "TX" position to enter Bluetooth transmitting mode. Insert the product into the AUX port of the Bluetooth transmitter (like a computer) firstly, then press and hold the multifunction button for 3 seconds to power on and ready for pairing.

How do I connect two Bluetooth receivers and output audio simultaneously in transmitting mode?

Short press the multifunction button twice to enter pairing mode, accompanying a blue light flashes twice per second. Re-open Bluetooth on Device B, the connection between transmitter and Device B will be established. Play music to confirm both A/B devices have audio output.

How do I check the battery level and charge the UGREEN CM403 Bluetooth Audio Receiver/Transmitter?

In receiving mode, the battery level will be shown in the status bar on your smartphone (Not available in all smartphone models). Low battery prompts to indicate the product has less than a 10% charge. Please charge the product with provided cable and a specified 5V/1A power adapter.

What is the warranty information for the UGREEN CM403 Bluetooth Audio Receiver/Transmitter?

A limited 2-year warranty applies to all UGREEN products purchased from UGREEN official store or authorized sellers. Please feel free to contact us If you run into any problems.

Documents / Resources



[UGREEN CM403 Bluetooth Audio Receiver/Transmitter](#) [pdf] User Manual
CM403, 2AQI5-CM403, 2AQI5CM403, 80893, CM403 Bluetooth Audio Receiver, CM403 Bluetooth Audio Transmitter