

UGREEN CM390 Bluetooth Adapter



UGREEN CM390 Bluetooth Adapter User Guide

[Home](#) » [UGREEN](#) » UGREEN CM390 Bluetooth Adapter User Guide 

Contents

- [1 UGREEN CM390 Bluetooth Adapter](#)
- [2 Product Specifications](#)
- [3 Product Usage Instructions:](#)
- [4 Step One-Drive Installation](#)
- [5 Step Two-Bluetooth Pairing](#)
- [6 FAQ](#)
- [7 Data Transmission— Phone to Computer](#)
- [8 Bluetooth Tethering](#)
- [9 Documents / Resources](#)
 - [9.1 References](#)

UGREEN

UGREEN CM390 Bluetooth Adapter



Product Specifications

- Model: NWGVQQVJ
- Power: 5V
- Compatibility: Works with various devices
- Dimensions: Compact and portable

Product Usage Instructions:

Setup and Connection

Ensure the device is powered with a 5V source. Connect the device to your desired equipment using the provided cables.

Operation:

Turn on the device by pressing the power button. Use the control panel to adjust settings as needed.

Troubleshooting:

If you encounter any issues, refer to the troubleshooting section in the user manual for solutions. Contact customer support if problems persist.

Frequently Asked Questions (FAQ):

• Q: How do I charge the device?

A: Use the provided charging cable to connect the device to a power source. Ensure the device is powered off

during charging.

- **Q: Can this device work with all smartphones?**

A: The device is compatible with most smartphones that support a 5V power supply. Check the user manual for specific compatibility details.

- **Q: How do I reset the device?**


A: To reset the device, locate the reset button on the device and press it using a small pin or paperclip. Hold the button for a few seconds until the device restarts.

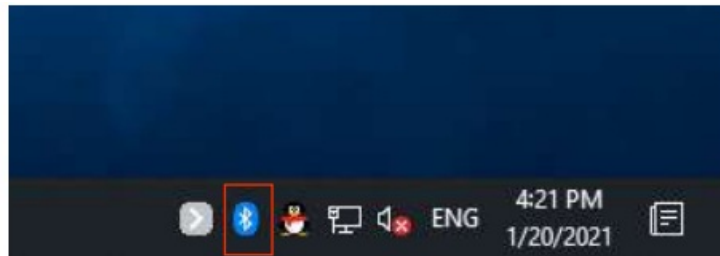
Notes

- The product applies to Windows 7/8.1/10. Installation and pairing operations may vary from different systems.
- The demonstration in this manual takes Windows 10 computer system and HONOR phones P40 as examples.
- Except mobile phones, the product also applies to Bluetooth devices such as mice/keyboards/game controllers/speakers/headsets, etc.
- The product is unavailable to macOS/iOS devices.
- Once the product and your device are paired for the first time, they will enter auto-reconnection mode next time.

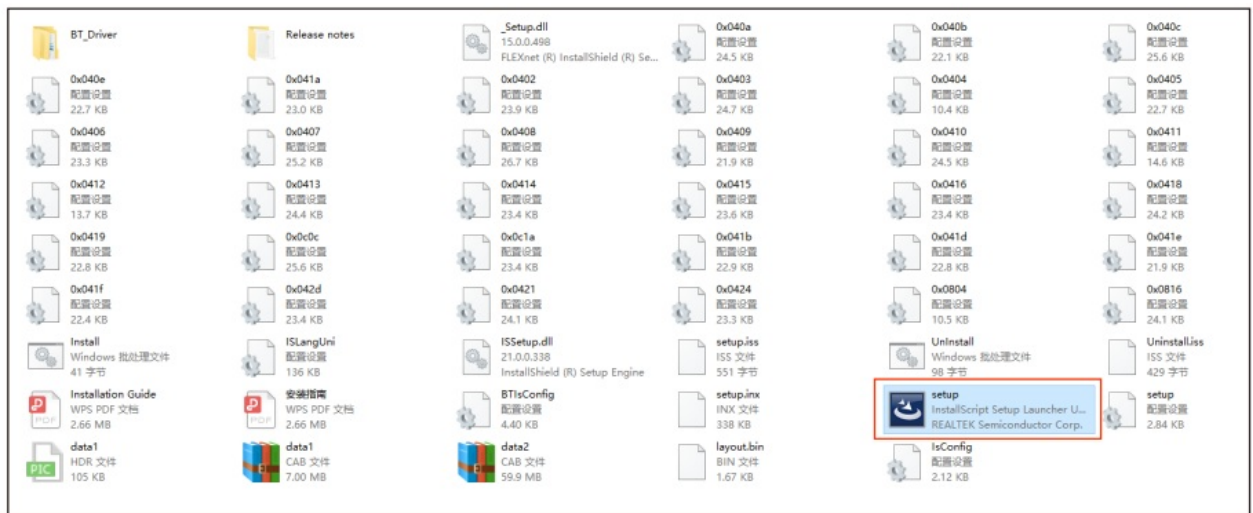
Step One-Drive Installation

1. Plug the Bluetooth adapter into USB port of the computer, the Bluetooth menu will recognize it and display as

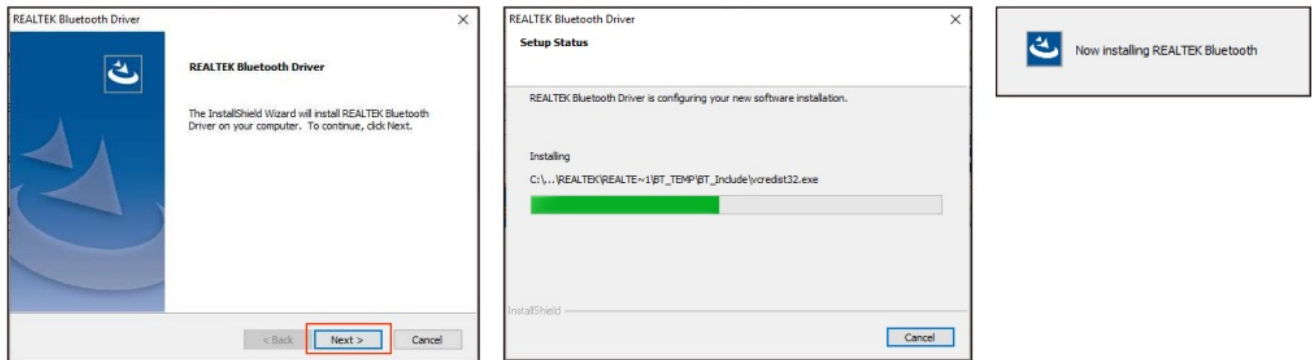
Bluetooth icon  on the lower right corner immediately.



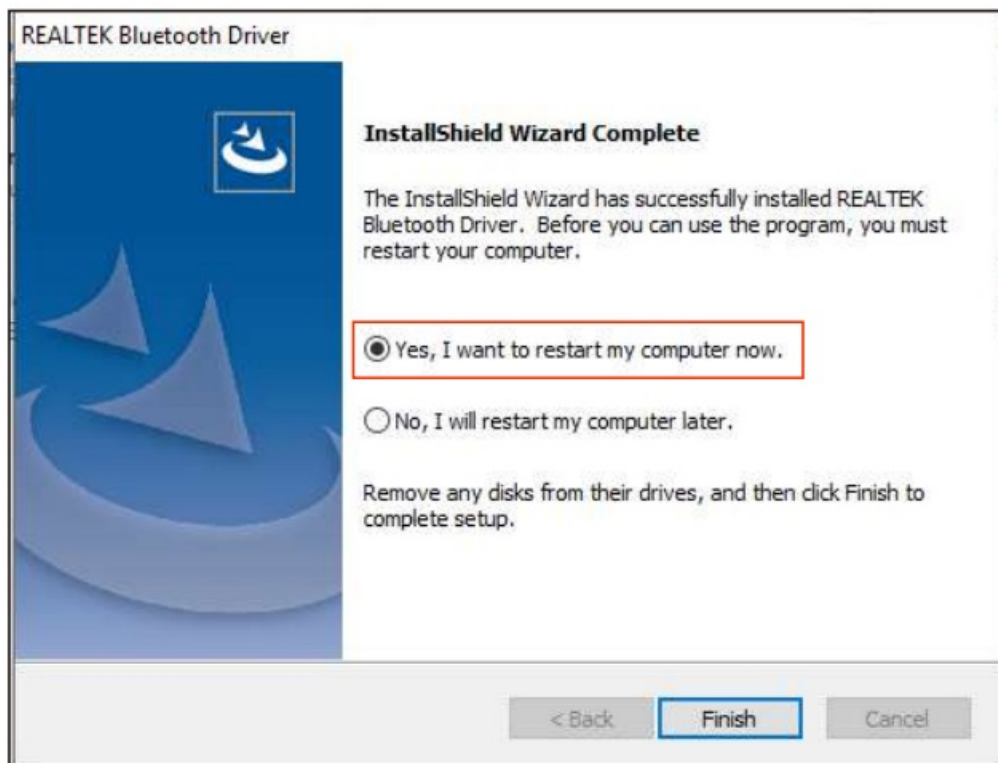
2. Two setup methods are available.
 - Place the CD drive into the computer, double-click on the pop-up folder to locate [setup.exe], then double-click to install.
 - Search product model "80889" on the UGREEN official website:
<https://www.ugreen.com/pages/download>. Download and install the corresponding driver.



3. Follow the pop-up window to click [Next].

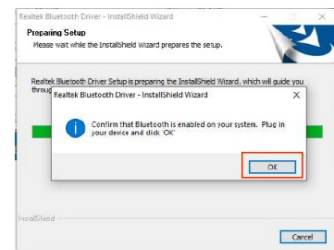
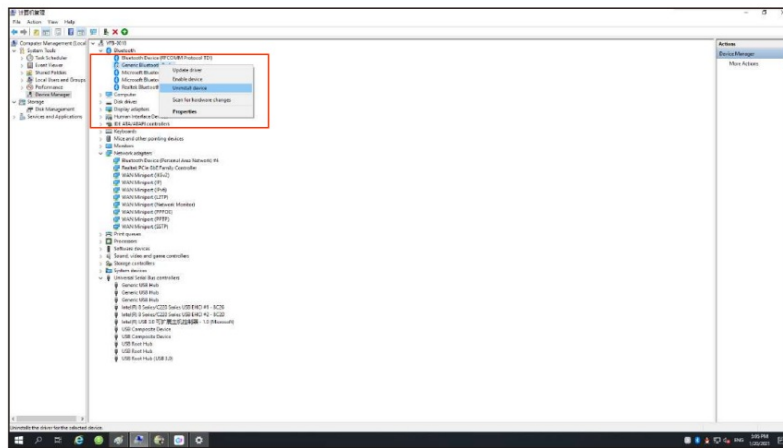


4. Click [Finish] to restart the computer and the computer system should be capable of the adapter.



Notices: During installation, if the pop-up window in the diagram appears, please follow the steps below.

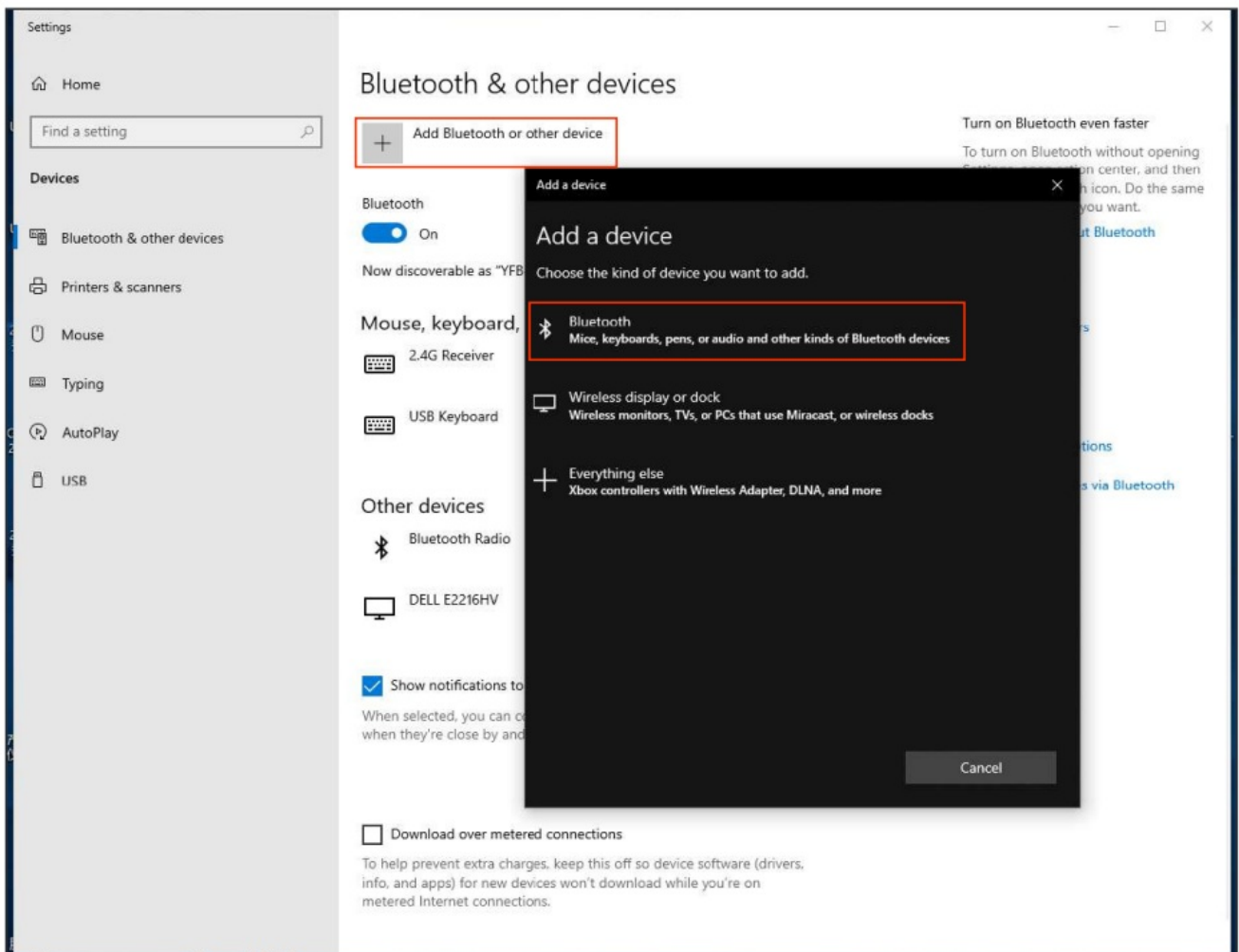
- Plug out the adapter;
- Enter [Device Manager] to disable built-in Bluetooth function of the computer.
- Plug the adapter into the computer again, click [OK] on pop-up window to proceed with installation.



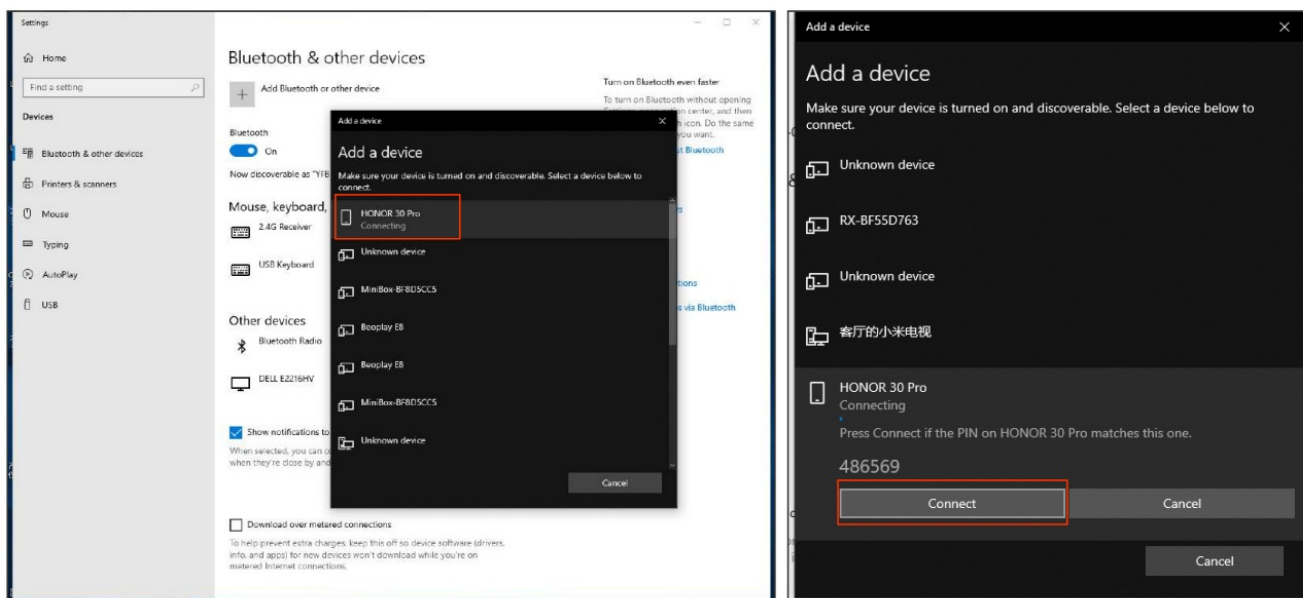
Step Two-Bluetooth Pairing

1. Turn on Bluetooth on the Phone.

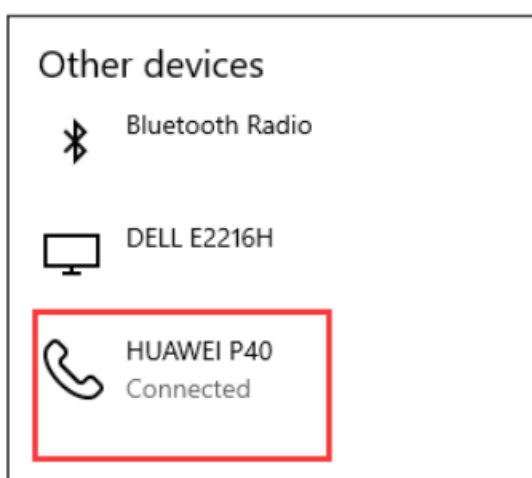
2. Double-click the icon [📶] on status bar of the computer, click icon [📶], then click [Bluetooth] to enter the Bluetooth devices list.



3. Locate the phone model on the list, click [Connect], the phone will pop-up “Blue- tooth pairing request”, click [Pair] on the phone.



4. Once pairing is completed, the device list displays that the phone is “Connected”



Notes

- For other Bluetooth devices (speakers/mouses/game controllers), click the device name to connect them to the computer.
- For Bluetooth keyboard, the computer will generate a PIN, enter the PIN on the keyboard to complete pairing.

FAQ

If the Bluetooth connection failed, please follow the steps below:

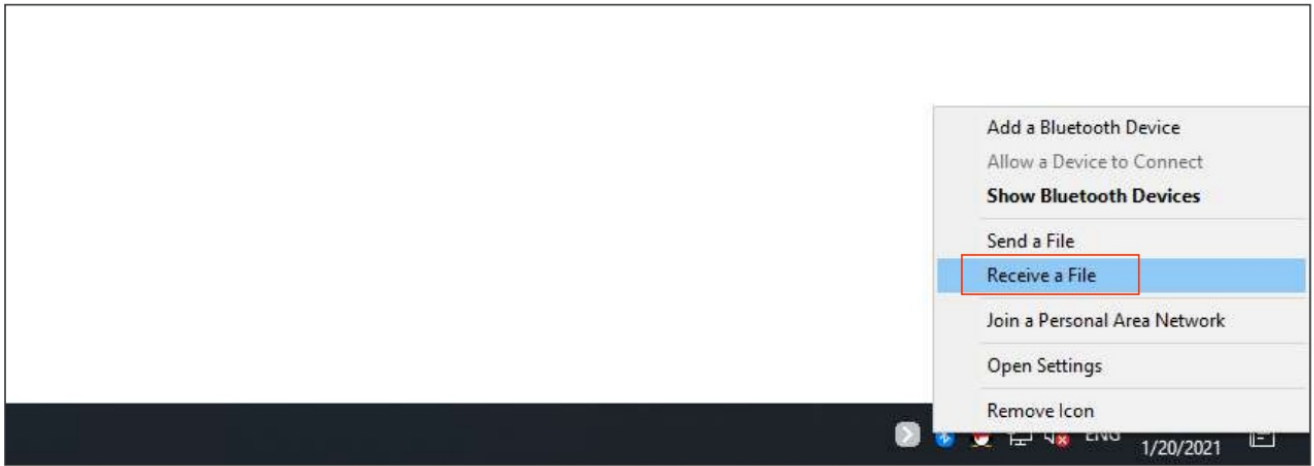
- During the connection, the Bluetooth device must be placed around the product at a range of 20m.
- If the display is frozen as Bluetooth connected, please restart the player.
- Please wait patiently during auto-connection process, for the speed may vary from different computer systems.
- If auto-reconnection process fails, please restart your Bluetooth device and try again.

Data Transmission— Phone to Computer

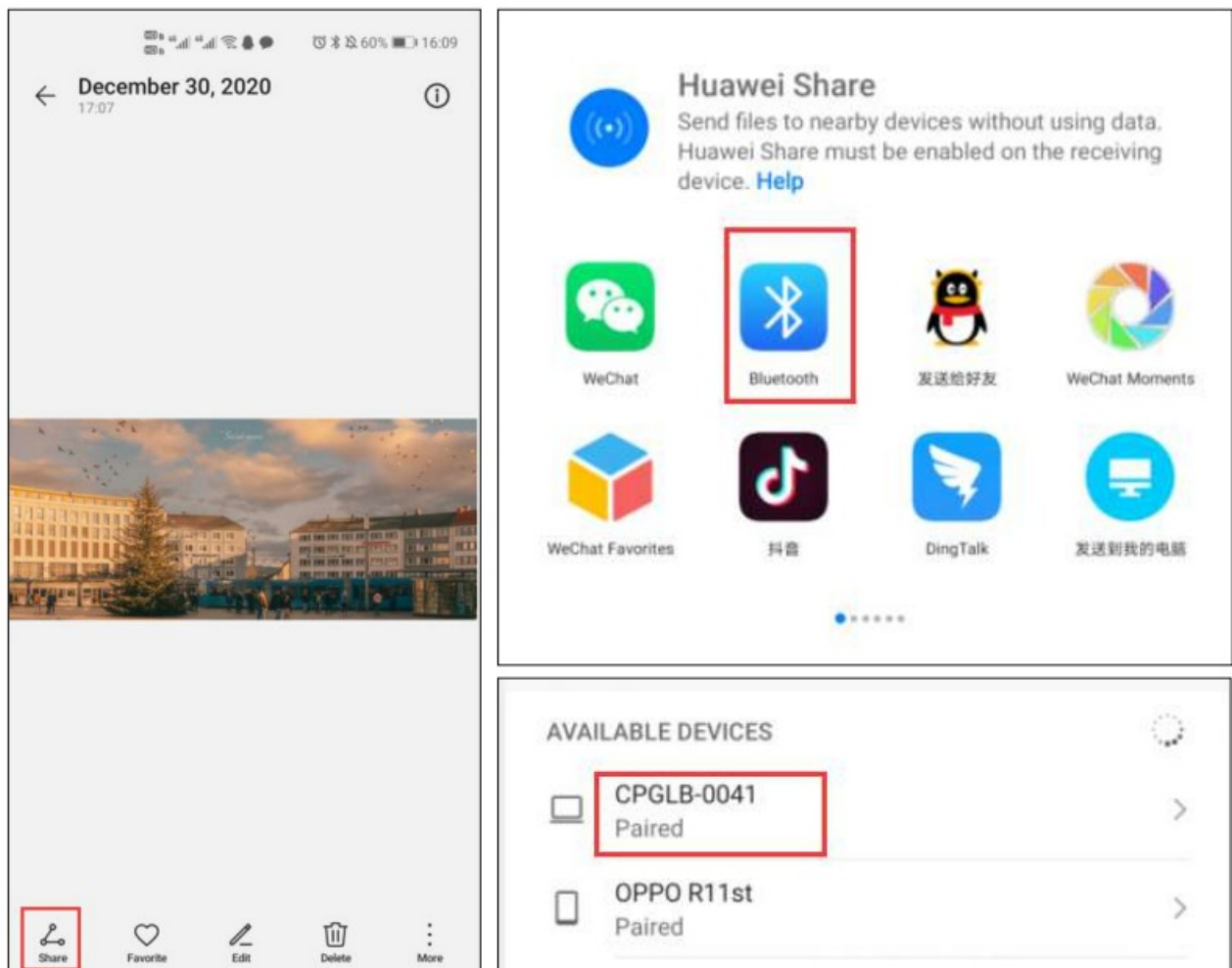


1. **Step 1:** Click the icon [Bluetooth symbol] on the status bar of the computer, click [Receive a File] to unfold the file receiving

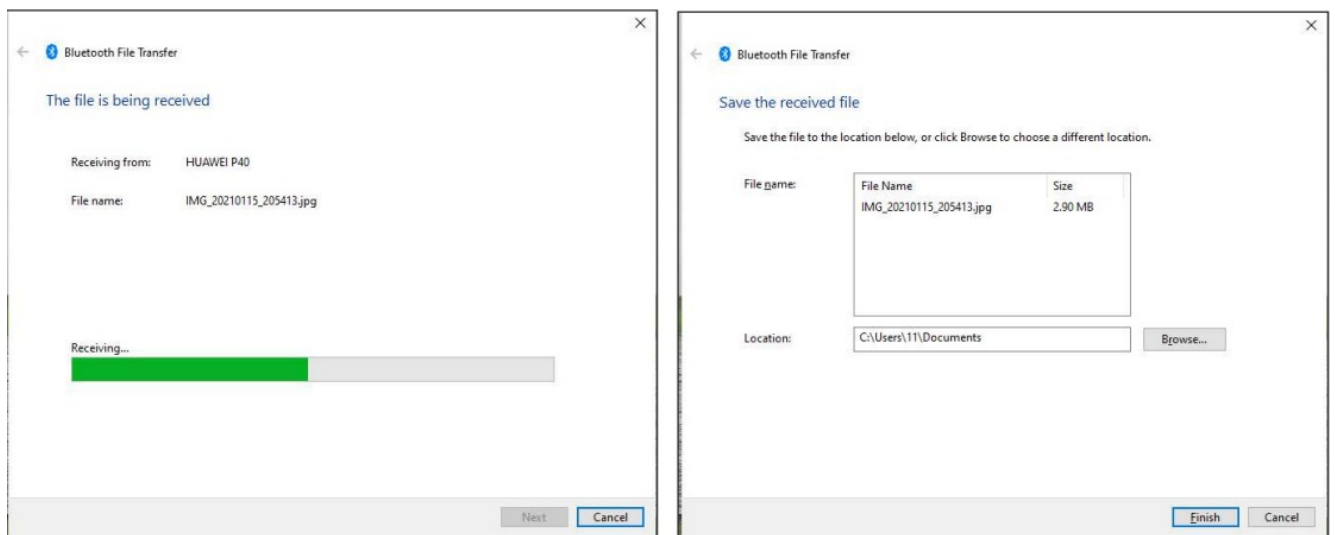
interface on the computer again.




2. **Step 2:** Choose a file (video/picture/document) on the phone. Click [Share] on its status bar and click the icon [Bluetooth], click the computer's name and waiting for it finish receiving.

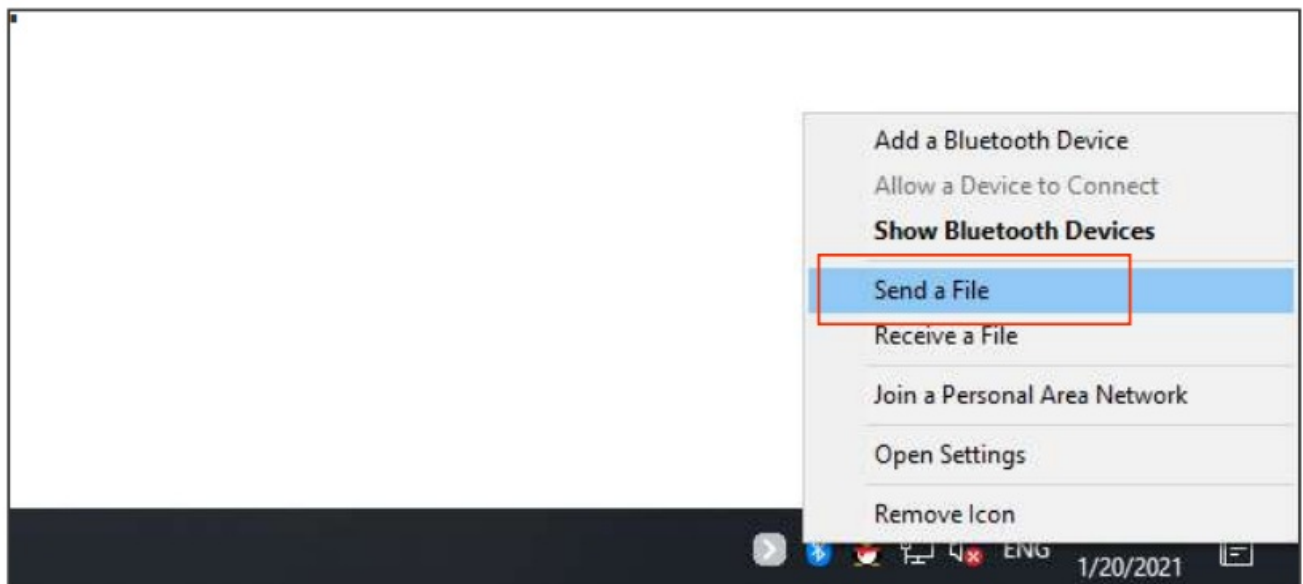


3. **Step 3:** Choose a location to save the received file.

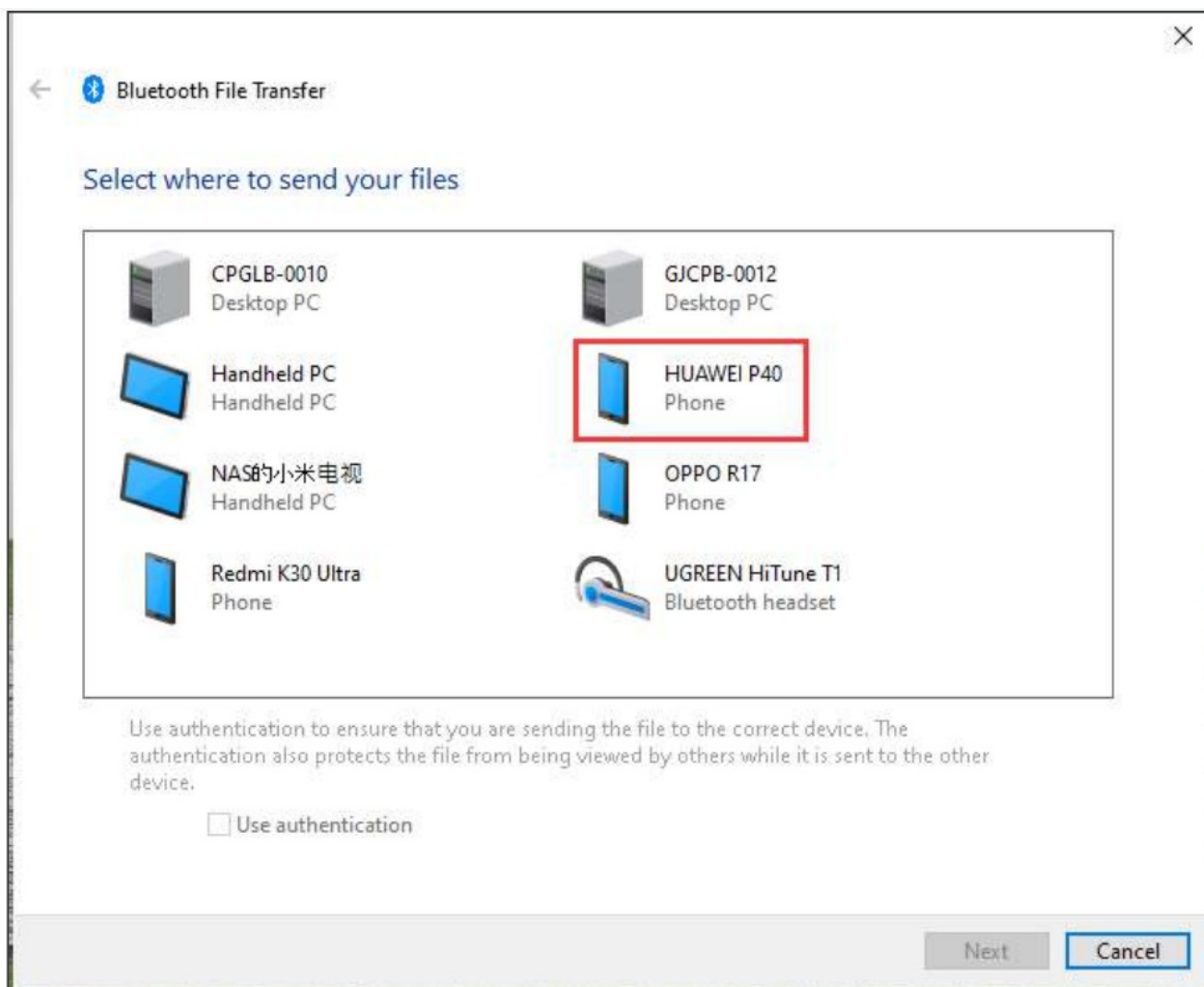


Data Transmission— Computer to Phone

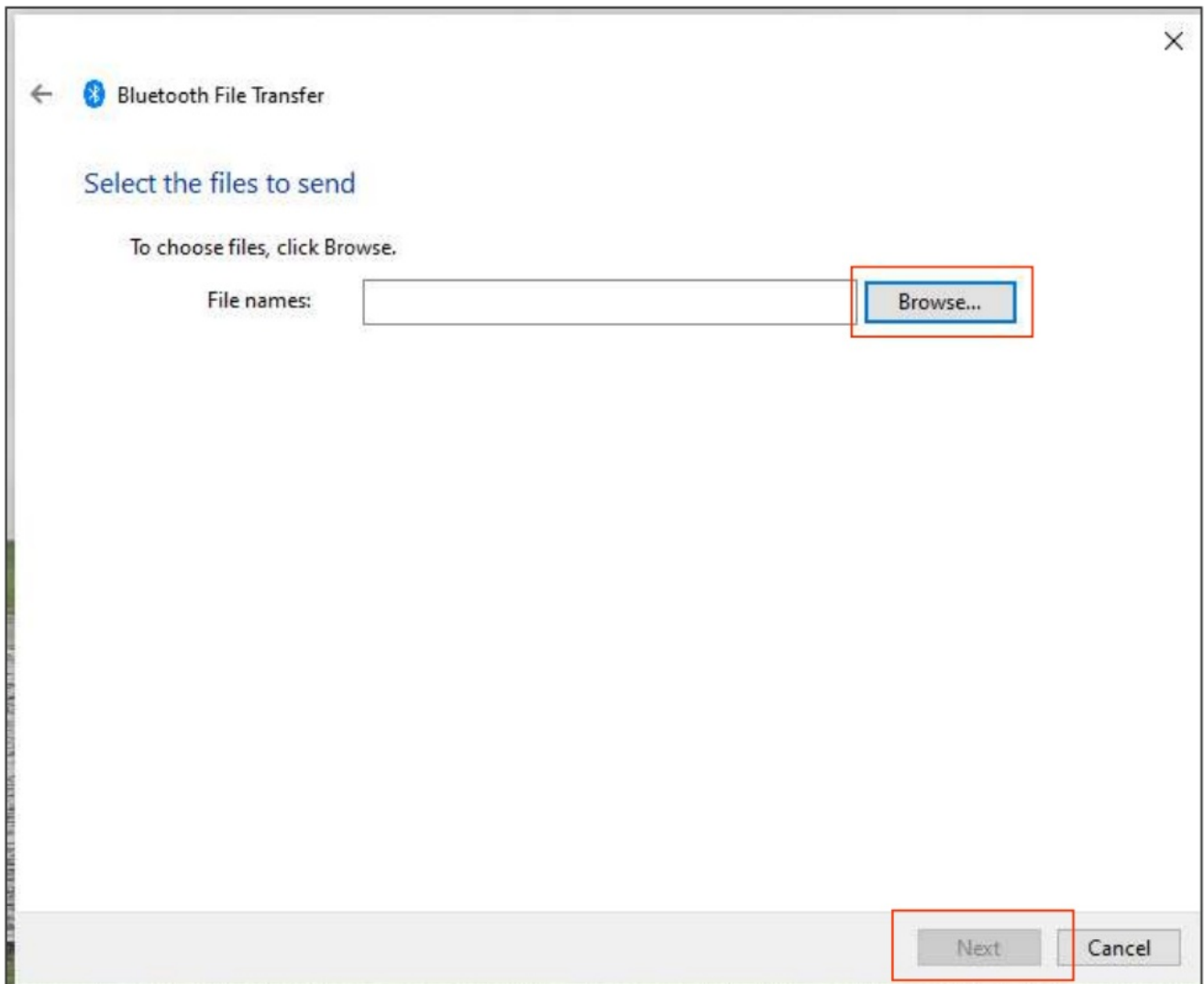
- Step 1:** Click the icon  on the status bar of the computer, then click [Send a File]



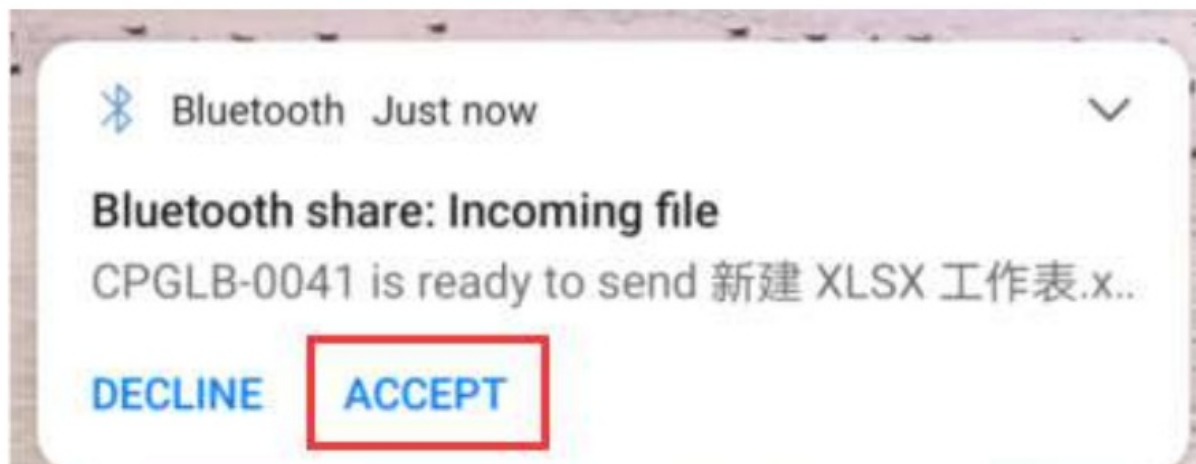
- Step 2:** Locate and click the target phone model.



3. **Step 3:** Click [Browse] to chose file and then click [Next].

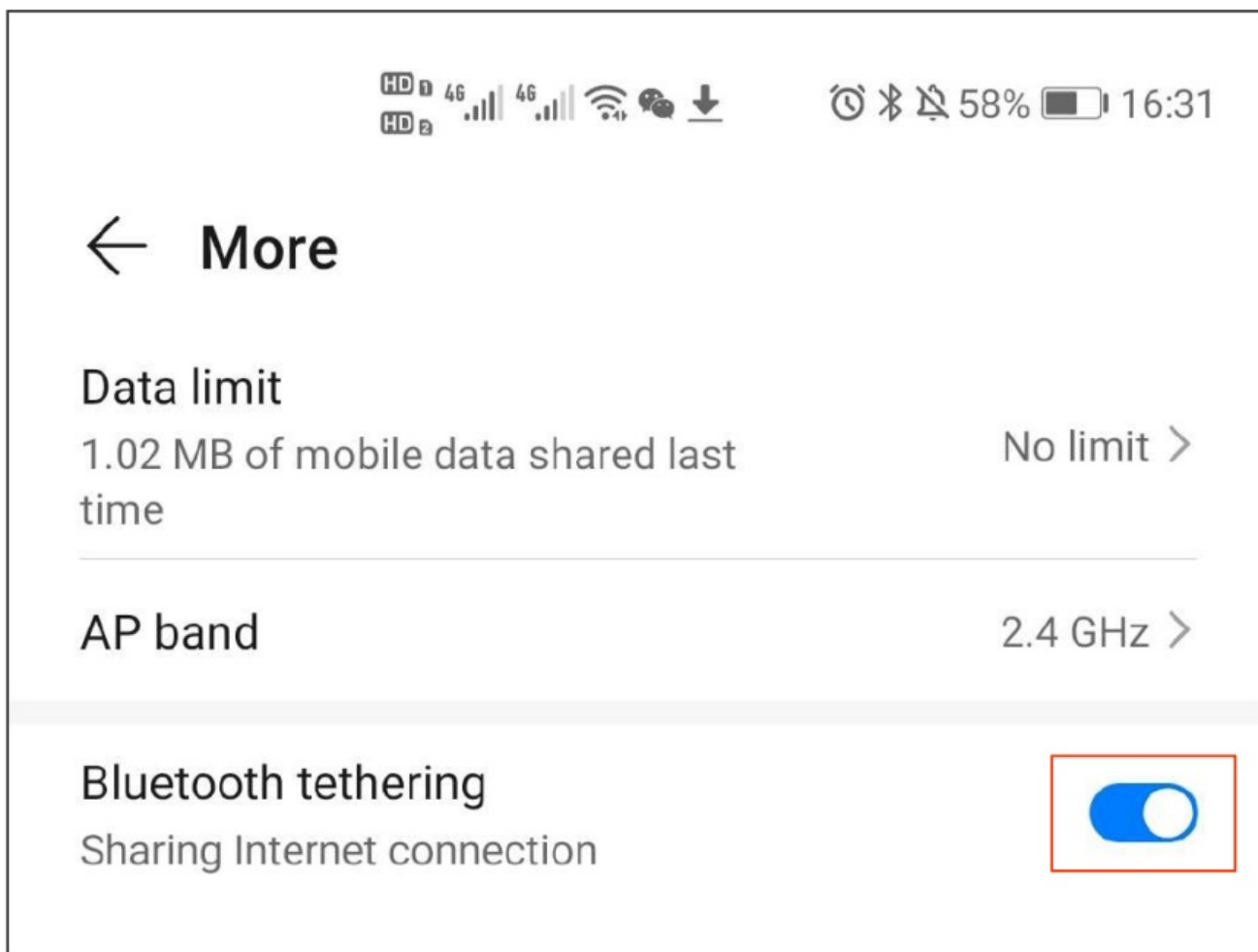



4. **Step 4:** Click [Accept] on the phone to receive the file.

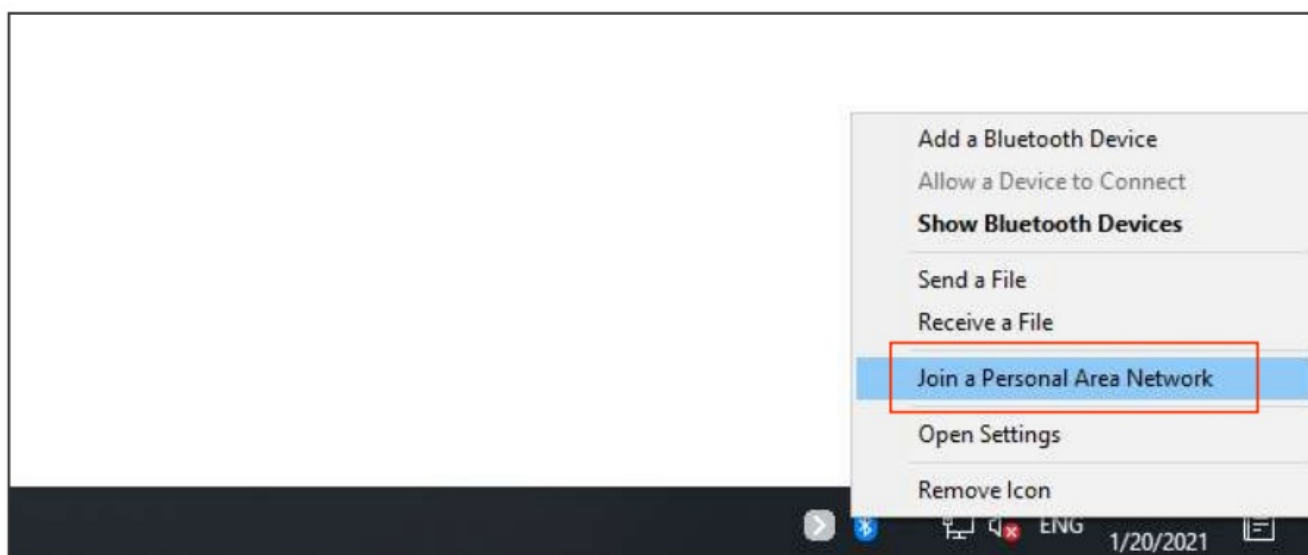


Bluetooth Tethering

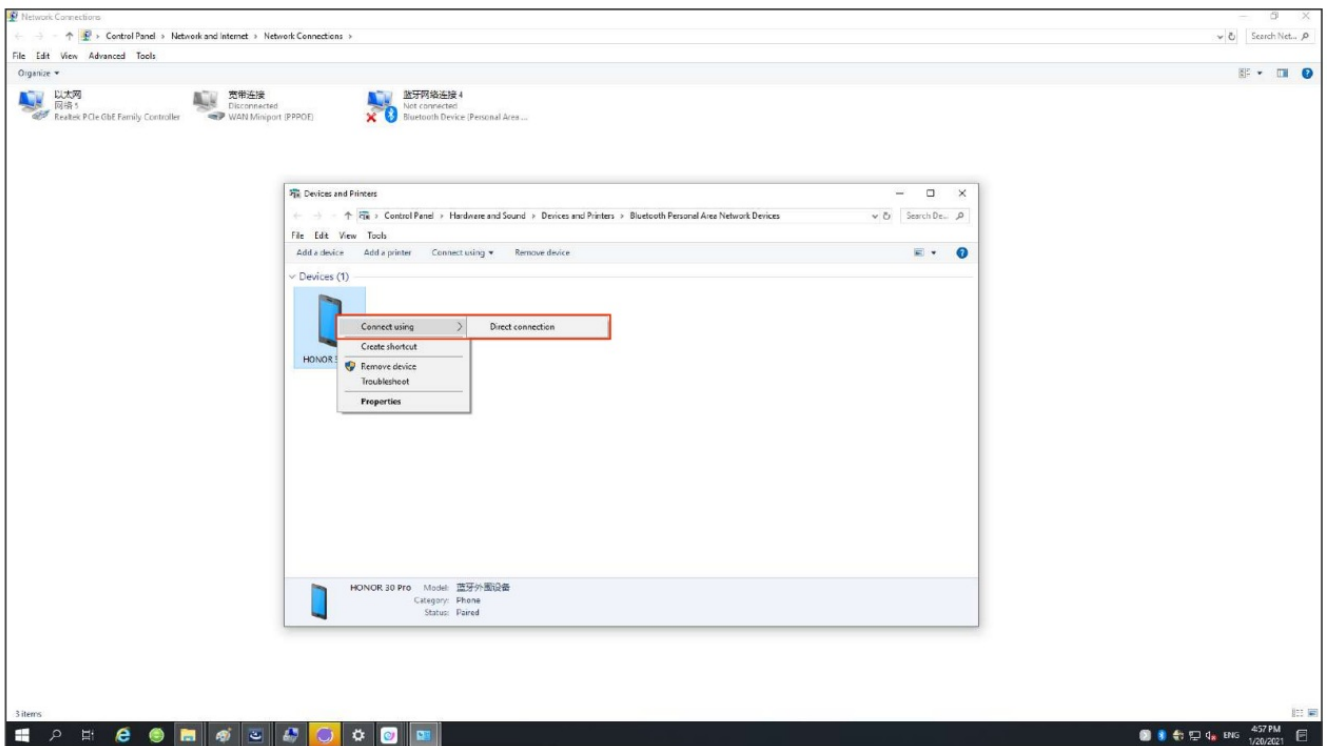
1. **Step 1:** Turn on Bluetooth tethering on the phone. Note: The way to turn on Bluetooth tethering is differ from phone models, please refer to their own user manual.



2. **Step 2:** Click the icon  on the computer, then click [Join a Personal Area Network].



3. **Step 3:** Locate the phone model on the pop-up list, right click to choose [Connect using], then click to choose [Direct connection].



4. **Step 4:** A pop-up window shows “successful connection”.



Documents / Resources

--	--

Notes

The adapter applies to Windows 7/8/10 installation and pairing operations with other Bluetooth devices.

1. Please refer to the following steps for the correct installation and pairing operations.

2. Please refer to the following steps for the correct installation and pairing operations.

3. Please refer to the following steps for the correct installation and pairing operations.

4. Please refer to the following steps for the correct installation and pairing operations.

5. Please refer to the following steps for the correct installation and pairing operations.

Step One—Drive Installation

1. Plug the Bluetooth adapter into USB port of the computer. The Bluetooth adapter will be automatically installed.



2. Follow the steps to install the driver.



3. Click 'Next' to install the driver.



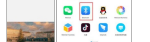
4. Click 'Finish' to complete the installation.



5. Click 'Next' to install the driver.



6. Click 'Finish' to complete the installation.

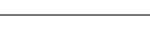
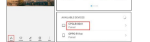


UGREEN CM390 Bluetooth Adapter [pdf] User Guide

CM390, Bluetooth Adapter, Adapter

Step Two—Bluetooth Pairing

1. Turn on Bluetooth on the phone.



References

- [User Manual](#)

This website is an independent publication and is neither affiliated with nor endorsed by any of the trademark owners. The "Bluetooth®" word mark and logos are registered trademarks owned by Bluetooth SIG, Inc. The "Wi-Fi®" word mark and logos are registered trademarks owned by the Wi-Fi Alliance. Any use of these marks on this website does not imply any affiliation with or endorsement.