



UGREEN CM324 Bluetooth Transmitter Adapter for Switch User Manual

[Home](#) » [UGREEN](#) » UGREEN CM324 Bluetooth Transmitter Adapter for Switch User Manual

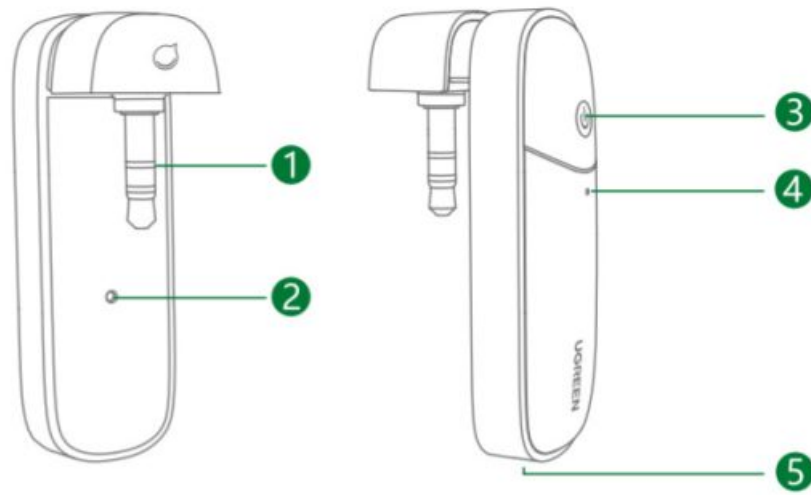
UGREEN

CM324 Bluetooth Transmitter Adapter for Switch User Manual

Contents [[hide](#)]

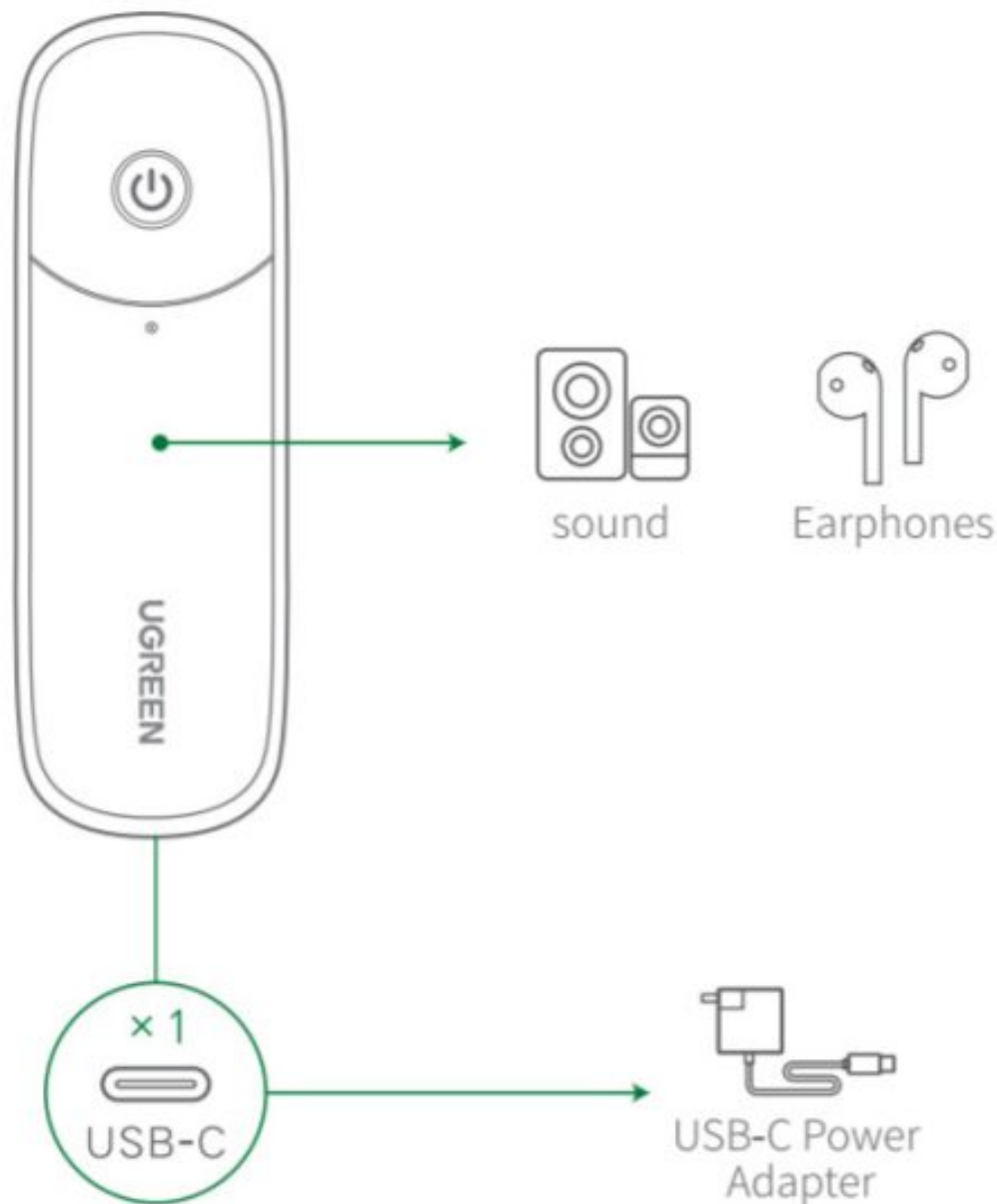
- 1 [PRODUCT DETAILS](#)
- 2 [HOW IT WORKS](#)
- 3 [POWER ON/OFF](#)
- 4 [BLUETOOTH PAIRING](#)
- 5 [MULTIPOINT BLUETOOTH](#)
- 6 [AUTO-RECONNECTION](#)
- 7 [CONNECTIVITY INTERRUPTIONS](#)
- 8 [WARMLY REMINDERS](#)
- 9 [CHARGING](#)
- 10 [COMPATIBILITY](#)
- 11 [WARNINGS](#)
- 12 [SPECIFICATIONS](#)
- 13 [PACKAGE CONTENTS](#)
- 14 [IMPORTANT WEEE INFORMATION](#)
- 15 [WARRANTY INFORMATION](#)
- 16 [FCC STATEMENT](#)
- 17 [FCC Warning](#)
- 18 [Documents / Resources](#)
- 19 [Related Posts](#)

PRODUCT DETAILS



1. 3.5mm Audio Jack E
2. Reset Key
3. Multifunctional Button (MFB)
4. Indicator Light
5. USB – C F

HOW IT WORKS



POWER ON/OFF

First usage: connect this unit to your Switch via the 3.5mm audio jack, press and hold the MFB for 3 seconds to power on this unit. The white light is on for 1 second, then the red and blue lights flash alternately. The product is powered on and ready to be paired.

- **Power On:** for subsequent usage, press and hold the MFB for 3 seconds, or connect to the 5V power supply via USB-C port to power it on. The white light is on for 1 second, then it flashes once every 5seconds, the product enters the reconnection state.
- **Power Off:** in any power-on state, press and hold the MFB for 3seconds, the white light will be off after lighting for 1 second, then the product will shut down.

BLUETOOTH PAIRING

- Place and keep the Bluetooth device around this unit at the transmit range of 10m/32ft.
- Please power on this unit and the Bluetooth device, and make sure they enter the pairing mode (the red and blue lights flash alternately).
- This unit is auto-paired with the Bluetooth device successfully, and the white light flashes once every 10

seconds.

- In any mode after powering on, double-press the MFB to enter the pairing state.

MULTIPOINT BLUETOOTH

This unit can pair with two Bluetooth devices and output the sound simultaneously, for example, device A and device B,

- Paired with device A, turn off device A.
- Double-press the MFB to enter the pairing state, turn on device B, paired with device B.
- Turn on device A, and the unit will reconnect to device A.
- Connect to audio source to confirm whether A/B Bluetooth device working status.
- If one or two Bluetooth devices do not have sound output, please press the MFB to enter reconnection mode or restart and pair with the two devices; If there is still no sound, please change the connection order of the A/B device.

AUTO-RECONNECTION

- After restarting this unit, it will reconnect to the last two paired devices automatically.
- If failed, press the MFB once to pair with the Bluetooth devices.

CONNECTIVITY INTERRUPTIONS

- In pairing status, this unit will shut down automatically if the connection is failed within 5 minutes.
- The operation range of this unit is 10m/32ft.

WARMLY REMINDERS

- Please be sure that this unit is powered on and in the pairing state before use.
- Place and keep the Bluetooth earphones/speaker around this unit at the transmit range of 10m/32ft.
- Please reboot this unit or the Bluetooth devices if the connection failed several times.

CHARGING

- Charging when power on charging this unit via USB-C charging cable, the red light is on, and the white light flashes once every 10 seconds;
- Charging when power off the red light is on, and the white light is off;
- Fully charged: the red light is off, and the white light is on.

COMPATIBILITY

- Supports Bluetooth earphones and speakers that comply with Bluetooth 5.0 protocol and backward versions.
- Charging this unit via the power adapter supports PD/ QC / 5V/2A charging protocol.

WARNINGS

- DO NOT dismantle, impact, squeeze or throw it into the fire.
- Avoid using this unit near magnetic fields.

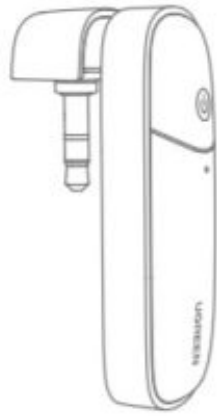
SPECIFICATIONS

Input	3.5mm audio, IVrms level
Output	Bluetooth Transmitter (5.0)
Charging Port	USB-C
Frequency Range	2.402GHz-2.480GHz
Frequency Response	20Hz-20kHz
SNR	> 90dB
THD	<0.1%
Audio Transmission Technologies	aptX, aptX LL, SBC
Bluetooth Delay	atpX LL < 40ms
Battery Type	lithium-polymer battery
Battery Rated Capacity	120mAh 3.7V (444mWh)
Charging Limited Voltage	5.25V
Operating Duration	8H
Charging Duration	2H
Transmission Distance	10m/32ft

NOTES

- This unit can not adjust to play or pause music or adjust the volume.
- There is a reset key below the 3.5mm audio plug, pressing it once via the Pin equipped with your phone to reset this unit when this unit crashed.
- When the product is in Multipoint Bluetooth mode, it can repair with another Bluetooth device if the paired Bluetooth device is on.
- When the product is in Multipoint Bluetooth mode, please keep two Bluetooth devices in the transmit range of 5m/16ft.
- Avoid using this unit near magnetic fields.
- Avoid using this unit in extreme temperature or moist environments.
- DO NOT exceed the standard 5V±5% voltage range.
- DO NOT drop or throw this unit.

PACKAGE CONTENTS



1× Bluetooth Transmitter
Adapter For Switch



1× USB-C Charging Cable



1× User Manual

IMPORTANT WEEE INFORMATION



This symbol on the product(s) and/or accompanying documents indicates that under the new Directive 2012/19/EU on waste electrical and electronic equipment (WEEE), product(s) used electrical and electronic equipment (WEEE) should not be mixed with general household waste. For proper treatment, recovery, and recycling, please take this product(s) to designated collection points where it will be accepted free of charge.

Disposing of this product correctly will help save valuable resources and prevent any potential negative effects on human health and the environment, which could otherwise arise from inappropriate waste handling.

Please contact your local authority for further details of your nearest designated collection point.

Penalties may be applicable for incorrect disposal of this waste, in accordance with your national legislation.

For professional users in the European Union

If you wish to discard electrical and electronic equipment (EEE), please contact your dealer or supplier for further information.

For disposal in countries outside of the European Union,

This symbol is only valid in the European Union (EU). If you wish to discard this product please contact your local authorities or dealer and ask for the correct method of disposal.

WARRANTY INFORMATION

A limited 2-year warranty applies to all UGREEN products purchased from UGREEN's official store or authorized sellers. Please feel free to contact us if you run into any problems.

CONTACT US

**FOR AMAZON MARKETPLACES
NORTH AMERICA**

US: support.us@ugreen.com

MX: support.mx@ugreen.com

EUROPE

UK: support.uk@ugreen.com

MORE SALES CHANNELS

ALIEXPRESS: aliexpress.support@ugreen.com

FCC STATEMENT

This device complies with Part 15 of the FCC rules. Operation is subject to the following two conditions: (1) this device may not cause harmful interference, and (2) this device must accept any interference received, including interference that may cause undesired operation.

Warning: Changes or modifications not expressly approved by the party responsible for compliance could void the user's authority to operate the equipment. Learn more about the EU Declaration of Conformity:

<https://www.ugreen.com/download/>

UGREEN GROUP LIMITED



www.ugreen.com



support@ugreen.com



+86-755-28066530



@ugreen.fans



@ugreen_official



@Ugreen_Official



Green Building, Longcheng Industrial Park, Longguanxi Road, Longhua, Shenzhen, China

UGREEN is a registered trademark of Ugreen Group Limited. All rights reserved.



RoHS



FCC Warning

This device complies with part 15 of the FCC Rules. Operation is subject to the following two conditions: (1) This device may not cause harmful interference, and (2) this device must accept any interference received, including interference that may cause undesired operation.


Any changes or modifications not expressly approved by the party responsible for compliance could void the user's authority to operate the equipment.

Note: This equipment has been tested and found to comply with the limits for a Class B digital device, pursuant to part 15 of the FCC Rules. These limits are designed to provide reasonable protection against harmful interference in a residential installation. This equipment generates uses and can radiate radio frequency energy and, if not installed and used in accordance with the instructions, may cause harmful interference to radio communications. However, there is no guarantee that interference will not occur in a particular installation. If this equipment does cause harmful interference to radio or television reception, which can be determined by turning the equipment off and on, the user is encouraged to try to correct the interference by one or more of the following measures:

- Reorient or relocate the receiving antenna.
- Increase the separation between the equipment and receiver.
- Connect the equipment into an outlet on a circuit different from that to which the receiver is connected.
- Consult the dealer or an experienced radio/TV technician for help.

This equipment complies with FCC radiation exposure limits set forth for an uncontrolled environment. This equipment should be installed and operated with a minimum distance of 20cm between the radiator & your body.

Documents / Resources

	<p>UGREEN CM324 Bluetooth Transmitter Adapter for Switch [pdf] User Manual CM324, 2AQI5-CM324, 2AQI5CM324, CM324 Bluetooth Transmitter Adapter for Switch, Bluetooth Transmitter Adapter for Switch, Transmitter Adapter for Switch, Adapter for Switch</p>
---	---