

UGREEN CM123 Bluetooth 5.3 Receiver Audio Adapter



UGREEN CM123 Bluetooth 5.3 Receiver Audio Adapter User Manual

[Home](#) » [UGREEN](#) » UGREEN CM123 Bluetooth 5.3 Receiver Audio Adapter User Manual 

Contents

- [1 UGREEN CM123 Bluetooth 5.3 Receiver Audio Adapter](#)
- [2 Product Overview](#)
- [3 Connect to the First Phone](#)
- [4 Connect to the Second Phone](#)
- [5 Factory Reset](#)
- [6 If the Connection Fails](#)
- [7 Button Controls & Indicator](#)
- [8 Specifications](#)
- [9 Package Contents](#)
- [10 Important WEEE Information](#)
- [11 FCC Statement](#)
- [12 EU Declaration of Conformity](#)
- [13 Documents / Resources](#)
 - [13.1 References](#)
- [14 Related Posts](#)

UGREEN

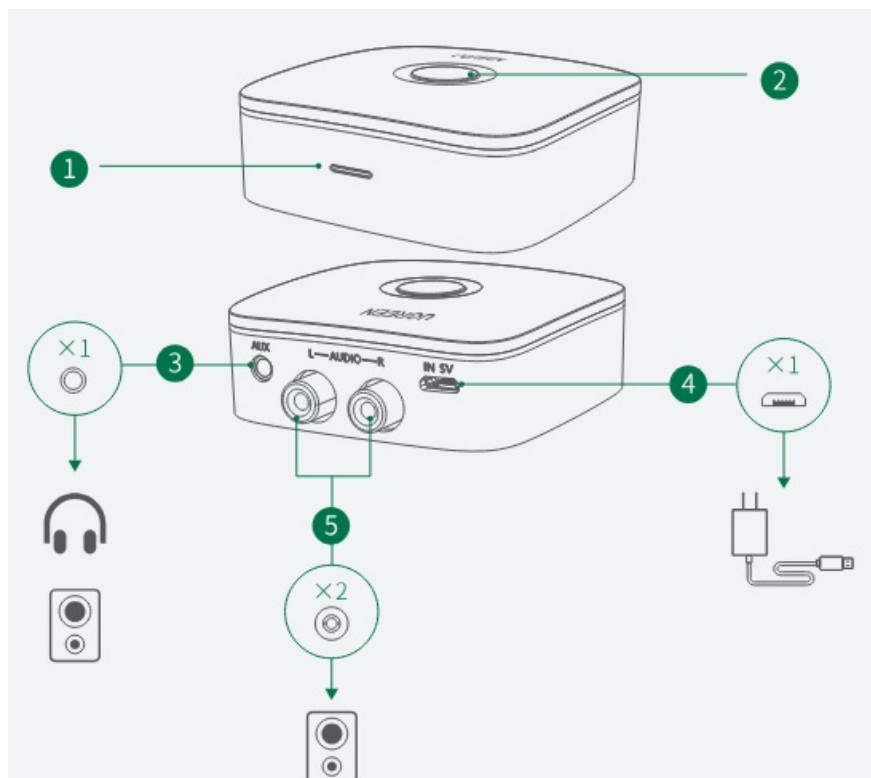
UGREEN CM123 Bluetooth 5.3 Receiver Audio Adapter



Bluetooth 5.3 Receiver Audio Adapter

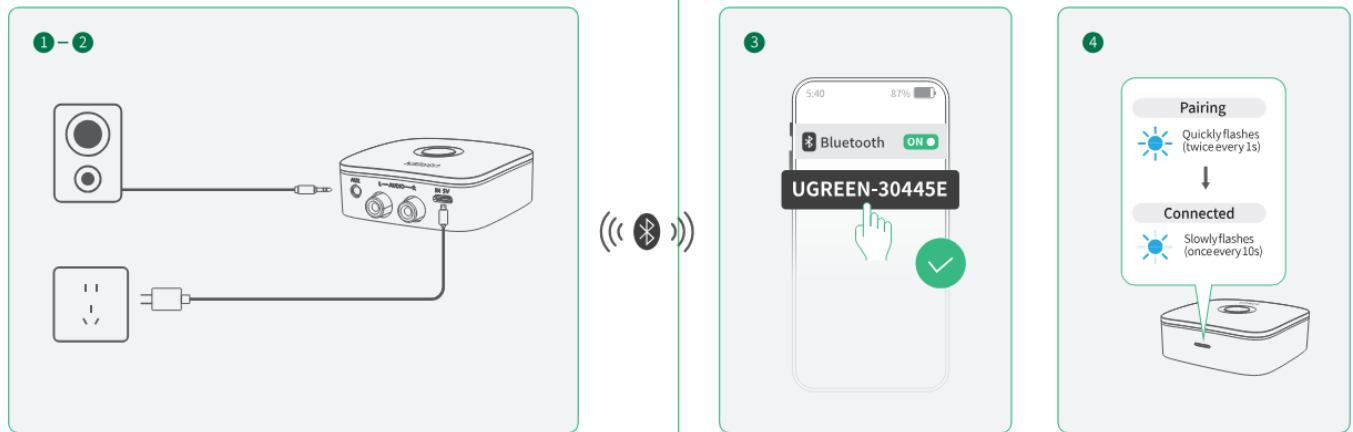


Product Overview



1. LED Indicator
2. **Multi-function Button (MFB) Single-click:** Play/Pause Music
3. **Press and Hold for 3s:** Power on/off
4. 3.5mm Audio Car Audio/Headphones
5. Micro USB Port Power Supply
6. 2 RCA Ports Old Wired Speaker

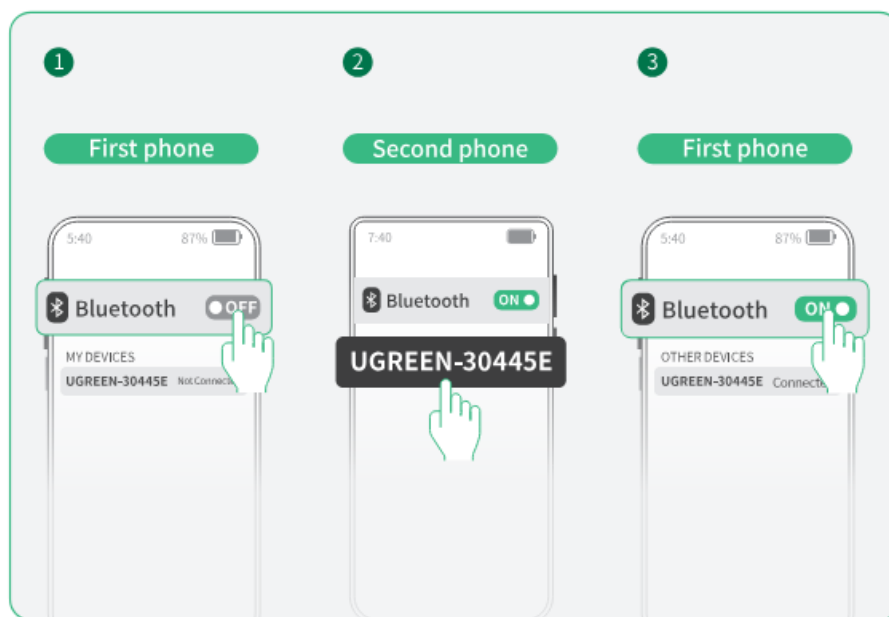
Connect to the First Phone



1. Use the included power cable to connect the power supply to the receiver via the Micro USB port. The receiver will automatically turn on and enter pairing mode.
2. Connect the 3.5mm port or RCA ports to the speaker.
3. Connect to "UGREEN-30445E" from your phone's Bluetooth list.
4. Blue indicator slow/v flashes to indicate successful pairing.

Note If you want to disconnect it, you can turn off the Bluetooth or turn off the receiver. It will automatically reconnect to your phone next time after turning on Bluetooth or powering on this unit.

Connect to the Second Phone



1. Turn off the Bluetooth of the first phone (tablet or computer) after successful pairing.
2. Connect to “UGREEN-30445E” from your second phone’s Bluetooth list. It slowly flashes blue when connection is completed.
3. Turn on the Bluetooth of the first phone and it will automatically reconnect to the receiver.

Note

- It only plays music on one mobile phone at a time.
- This receiver can save a maximum of 5 paired devices.

Factory Reset

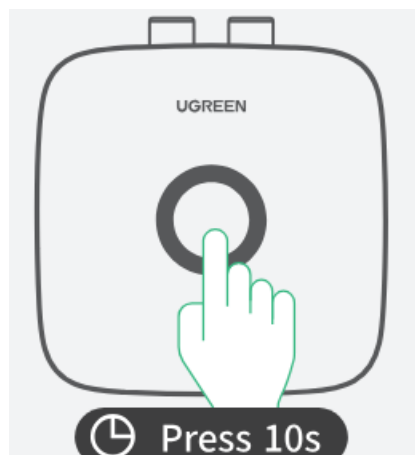
Power off

(when connected to external power supply) Press and hold the button for 3s to turn it off.



Resetting

Press and hold the button for 10s until the blue indicator lights on for 5s then goes out. At this time, resetting is completed and the receiver will automatically enter pairing mode.




If the Connection Fails

If pairing fails within about 5 minutes, you can:

- Keep the receiver within the transmission range of 10m/32ft.
- Power off and restart the receiver
- Reset the Bluetooth on your phone.

Button Controls & Indicator

Button	Function		Operation	LED
	Power on/off	Power on	Press and hold for 3s	Blue indicator on: 1s
		Power off		Blue indicator on: 1s
	Bluetooth connection	Pairing	/	Blue indicator flashes twice every 1s
		Pairing successful		Blue indicator flashes once every 10s
		Reconnecting		Blue indicator flashes once every 5s



Notes

- Do not use around strong magnetic fields.
- Do not expose to liquids, moist or extreme temperatures.
- Do not dismantle, impact or crush.
- Do not clean this unit with strong chemicals or detergents.
- Keep out of reach of children.
- Do not place this unit in direct sunlight.
- Please store this unit in dry, clean and moderate climates if you will not use this unit for a long time.




Specifications

Model	CM123
Bluetooth Version	5.3
Frequency Band	2400 MHz-2483.5 MHz
Max. RF Output Power	4dBm (conducted)
Transmission Distance	10m Max (no blocking)
Bluetooth Profile	A2DP/AVRCP
Codecs	SBC/AAC
Frequency Response	20Hz-20kHz
Output Level	>700m Vrms
SNR	≥90 dB
THD+N	≤0.1%
Audio Port	3.5mm audio/2RCA
Power Supply Port	Micro USB
Compatible Systems	Windows/macOS/Linux/Android/iOS


The data are measured by UGREEN lab but may vary based on specific circumstances.



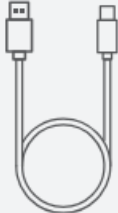
Package Contents




1 × Bluetooth 5.3 Receiver
Audio Adapter



1 × User Manual



1 × Micro USB Power Cable



1 × 3.5mm Audio Cable

Important WEEE Information



- This symbol on the products) and / or accompanying documents indicates that, under the new Directive 2012/19/EU on waste electrical and electronic equipment (WEEE), products) used electrical and electronic equipment (WEEE) should not be mixed with general household waste. For proper treatment, recovery and recycling, please take this products) to designated collection points where it will be accepted free of charge.
- Disposing of this product correctly will help save valuable resources and prevent any potential negative effects on human health and the environment, which could otherwise arise from inappropriate waste handling. Please contact your local authority for further details of your nearest designated collection point. Penalties may be applicable for incorrect disposal of this waste, in accordance with your national legislation.
- For professional users in the European Union If you wish to discard electrical and electronic equipment (EEE), please contact your dealer or supplier for further information. For disposal in countries outside of the European
- Union This symbol is only valid in the European Union (EU). If you wish to discard this product please contact your local authorities or dealer and ask for the correct method of disposal.

FCC Statement



This device complies with part 15 of the FCC Rules. Operation is subject to the following two conditions:

1. This device may not cause harmful interference, and
2. This device must accept any interference received, including interference that may cause undesired operation.

Warning: Changes or modifications not expressly approved by the party responsible for compliance could void the user's authority to operate the equipment.

FCC Radiation Exposure Statement This equipment complies with FCC radiation exposure limits set forth for an uncontrolled environment. This transmitter must not be co-located or operating in conjunction with any other antenna or transmitter.

FCC NOTE: This equipment has been tested and found to comply with the limits for a Class B digital device, pursuant to part 15 of the FCC Rules. These limits are designed to provide reasonable protection against harmful interference in a residential installation. This equipment generates, uses and can radiate radio frequency energy and, if not installed and used in accordance with the instructions, may cause harmful interference to radio communications. However, there is no guarantee that interference will not occur in a particular installation.

- If this equipment does cause harmful interference to radio or television reception, which can be determined by turning the equipment off and on, the user is encouraged to try to correct the interference by one or more of the following measures:

- Reorient or relocate the receiving antenna.
- Increase the separation between the equipment and receiver.
- Connect the equipment into an outlet on a circuit different from that to which the receiver is connected.
- Consult the dealer or an experienced radio/TV technician for help.

The device has been evaluated to meet general RF exposure requirement. The device can be used in portable exposure condition without restriction.

IC Statement

ENI This device complies with Industry Canada licence-exempt RSS standard (s). Operation is subject to the following two conditions:

1. This device may not cause interference ;
2. This device must accept any interference, including interference that may cause undesired operation of the device.

EU Declaration of Conformity




- Hereby, Ugreen Group Limited declares that the product is in compliance with Directive 2014/53/EU & 2011/65/EU. Learn more about the EU Declaration of Conformity is available at the following internet address: <https://www.ugreen.com/download/>
- **Ugreen Group Limited Add:** Ugreen Building, Longcheng Industrial Park, Longguanxi Road, Longhua, Shenzhen, China
- **EU REP:** Ugreen Group GmbH
- **Add:** Mannheimer Str. 13, 30880 Laatzen, Germany

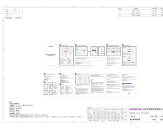


Hereby, green Group Limited declares that the product is in compliance with Directive UK Radio Equipment Regulations(SI 2017 No.1206)& The Restriction of the Use of Certain Hazardous Substances in Electrical and Electronic Equipment Regulations 2012 (SI 2012 No.3032). Learn more about the GB Declaration of Conformity is available at the following internet address: <https://www.ugreen.com/download/>

- **Ugreen Group Limited Add:** Ugreen Building, Longcheng Industrial Park, Longguanxi Road, Longhua, Shenzhen, China
- **UK REP:** Acumen Intonational Business Consultancy
- **Limited Add:** 94 Ock Street, Abingdon, OX14 5DH, UK

SELECT			V							SCALE 1:1
Dim \ TOL.	A	B	C	EPS	EPE	EPP	BAG	CTN	LABEL	
0~6	0.05	0.05	0.10						0.20	SHEET 1/1
6~30	0.10	0.15	0.20	0.50	0.50	0.50	3.00		0.20	
30~120	0.15	0.20	0.30	0.50	0.50	0.50	5.00	1.00	0.25	
120~300	0.20	0.30	0.40	1.00	1.00	1.00	10.00	1.00	0.30	UNIT mm
300~450	0.25	0.40	0.50	2.00	2.00	2.00	15.00	2.00	0.50	
450~600	0.30	0.50	0.60	3.00	3.00	3.00	20.00	3.00	0.80	
DRAFT TOLERANCE			$\pm 0.20^\circ$		CRITICAL DIM. MARK				*	

Documents / Resources

	<p>UGREEN CM123 Bluetooth 5.3 Receiver Audio Adapter [pdf] User Manual</p> <p>CM123 Bluetooth 5.3 Receiver Audio Adapter, CM123, Bluetooth 5.3 Receiver Audio Adapter, 5.3 Receiver Audio Adapter, Receiver Audio Adapter, Audio Adapter, Adapter</p>
--	---

References

- [User Manual](#)

[Manuals+](#), [Privacy Policy](#)

This website is an independent publication and is neither affiliated with nor endorsed by any of the trademark owners. The "Bluetooth®" word mark and logos are registered trademarks owned by Bluetooth SIG, Inc. The "Wi-Fi®" word mark and logos are registered trademarks owned by the Wi-Fi Alliance. Any use of these marks on this website does not imply any affiliation with or endorsement.