

# UGREEN 970 Bluetooth Receiver User Manual

Contents

1 970 Bluetooth Receiver

2 FCC Warning Statement:



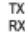
3 Documents / Resources

3.1 References

4 Related Posts

## 970 Bluetooth Receiver

Usage Operation

Key	Effect	Operation
	Power on/off	Long press for 2 seconds
	Music playback/pause	Click (short press)
TX  RX	TX transmission RX reception mode switching	Toggle switch

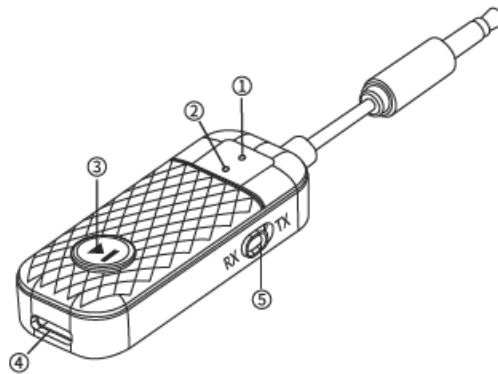
### Bluetooth transmitter (TX mode)

- 1, Plug the device into the AUX output interface (AUX out) of devices such as TV/DVD
- 2, Turn on the local power and keep the device in TX mode
- 3, Pair the device with Bluetooth earphones/speakers
- 4, Set the headphones/speakers to pairing mode for automatic pairing
- 5, After pairing is completed, the indicator light is on and the white light remains on

### Bluetooth receiver (RX mode)

- 1, Insert the local device into the AUX interface of the speaker/amplifier (AUX in)
- 2, Turn on the local power and ensure that the device is in RX mode
- 3, Pair this device with a Bluetooth enabled phone/PC/tablet After pairing is completed, the blue indicator light remains on

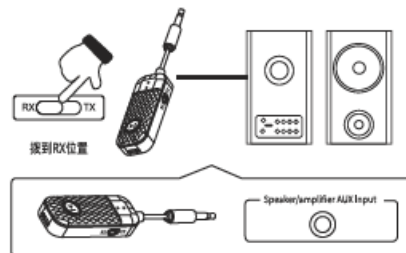
## Interface Button Display



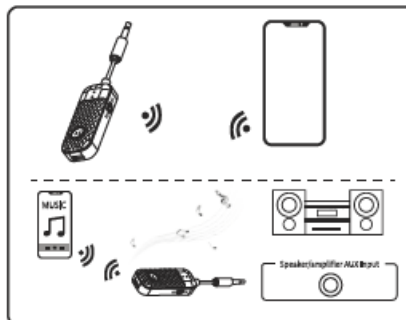
- 1. Blue RX indicator light, red charging indicator light
- 2. TX white indicator light
- 3. Pause/play, turn on/off
- 4. Type-c charging port
- 5. Transmission/reception mode switching

## Used as a receiver (RX mode)

Step 1: Long press the power button to turn on the device, then insert the speaker AUX input port

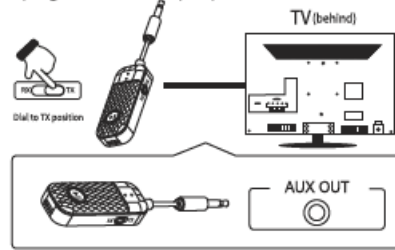


Step 2: Turn on Bluetooth on your phone and search for the Bluetooth name "BT-970", Click on the connection to successfully pair and connect



### Used as a transmitter (TX mode)

Step 1: Long press the power button to turn on the device, then plug in the AUX output port of the TV



Attention: Insert the AUX output interface into the TV, not the input interface

Step 2: Set your Bluetooth earphones/speakers to pairing mode, and the device will automatically start pairing, the pairing completion indicator light is constantly on, and sound can be transmitted



### FCC Warning Statement:

This equipment has been tested and found to comply with the limits for a Class B digital device, pursuant to part 15 of the FCC Rules. These limits are designed to provide reasonable protection against harmful interference in a residential installation. This equipment generates, uses and can radiate radio frequency energy and, if not installed and used in accordance with the instructions, may cause harmful interference to radio communications. However, there is no guarantee that interference will not occur in a particular installation. If this equipment does cause harmful interference to radio or television reception, which can be determined by turning the equipment off and on, the user is encouraged to try to correct the interference by one or more of the following measures:

- Reorient or relocate the receiving antenna.
- Increase the separation between the equipment and receiver.
- Connect the equipment into an outlet on a circuit different from that to which the receiver is connected.
- Consult the dealer or an experienced radio/TV technician for help.

Caution: Any changes or modifications to this device not explicitly approved by manufacturer could void your authority to operate this equipment.

This device complies with part 15 of the FCC Rules. Operation is subject to the following two conditions: (1) This device may not cause harmful interference, and (2) this device must accept any interference received, including interference that may cause undesired operation.

The device has been evaluated to meet general RF exposure requirement.

## Documents / Resources



**[UGREEN 970 Bluetooth Receiver](#)** [pdf] User Manual  
2BEMR-970, 2BEMR970, 970 Bluetooth Receiver, 970, Bluetooth Receiver, Receiver

## References

- [User Manual](#)

### [Manuals+](#). [Privacy Policy](#)

This website is an independent publication and is neither affiliated with nor endorsed by any of the trademark owners. The "Bluetooth®" word mark and logos are registered trademarks owned by Bluetooth SIG, Inc. The "Wi-Fi®" word mark and logos are registered trademarks owned by the Wi-Fi Alliance. Any use of these marks on this website does not imply any affiliation with or endorsement.