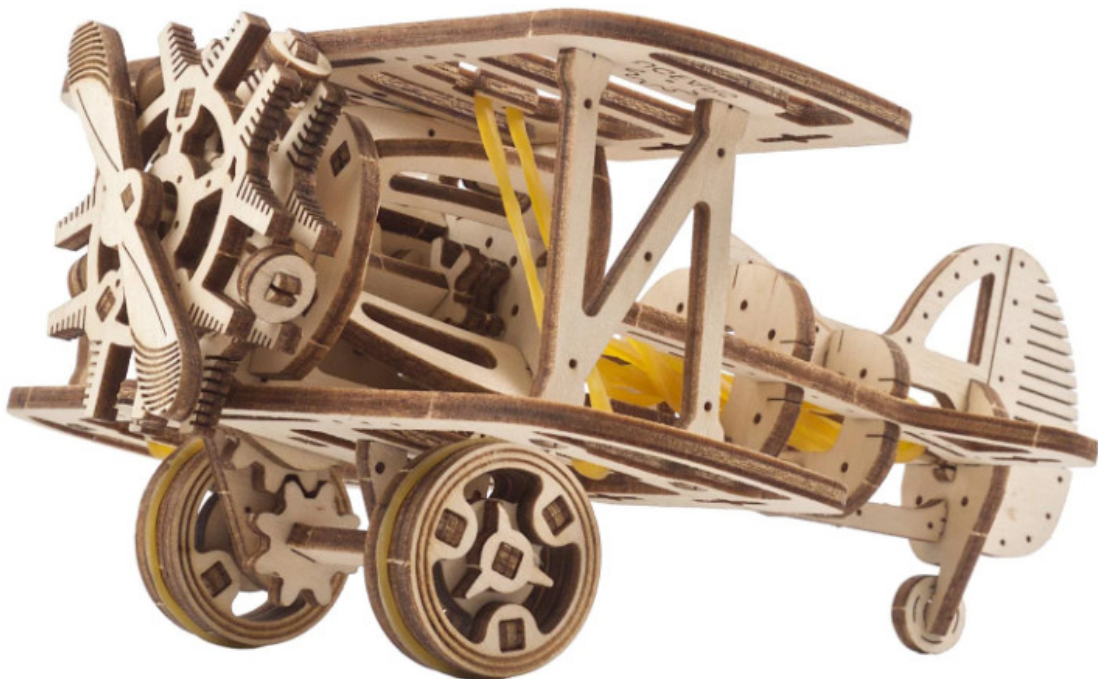


UGEARS Mini-biplane Mechanical Model Kit Instruction Manual

[Home](#) » [UGEARS](#) » UGEARS Mini-biplane Mechanical Model Kit Instruction Manual 



Assemble me.
Fly high and fast!
**Mini-biplane Mechanical Model Kit
Instruction Manual**



Contents

- 1 Mini-biplane Mechanical Model Kit
- 2 Assembly instructions:
- 3 Symbols.
- 4 Documents / Resources

Mini-biplane Mechanical Model Kit



Find out MORE

https://ugearsmodels.com/mini-biplane.html?utm_source=scan-product-page&utm_medium=mini-biplane&utm_campaign=qr



MECHANICAL



NO GLUE CONNECTION



PLYWOOD

Assembly instructions:

Remove model parts from the hanger board as illustrated below. Careful not to break parts. If a part does not remove easily, carefully cut it out with a knife. This model is intended for self-assembly without glue. If you have difficulty installing the axles, try waxing them with a regular candle. All moving parts can also be waxed during assembly to reduce friction when operating the model.

Customer support customerservice@ugearsmodels.com



Do not use a lighted candle!

Symbols.



Pay attention. Check position of the part.



Sand to remove burrs.



Wax the part with a regular candle (rub with a candle).



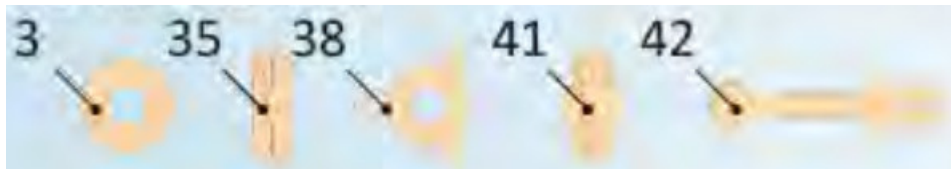
Check the mechanism for smoothness and accuracy of movement. Operate the mechanism so the parts would seat-in.



The part should be easily rotated (moved).



Specified details come with spare duplicates.



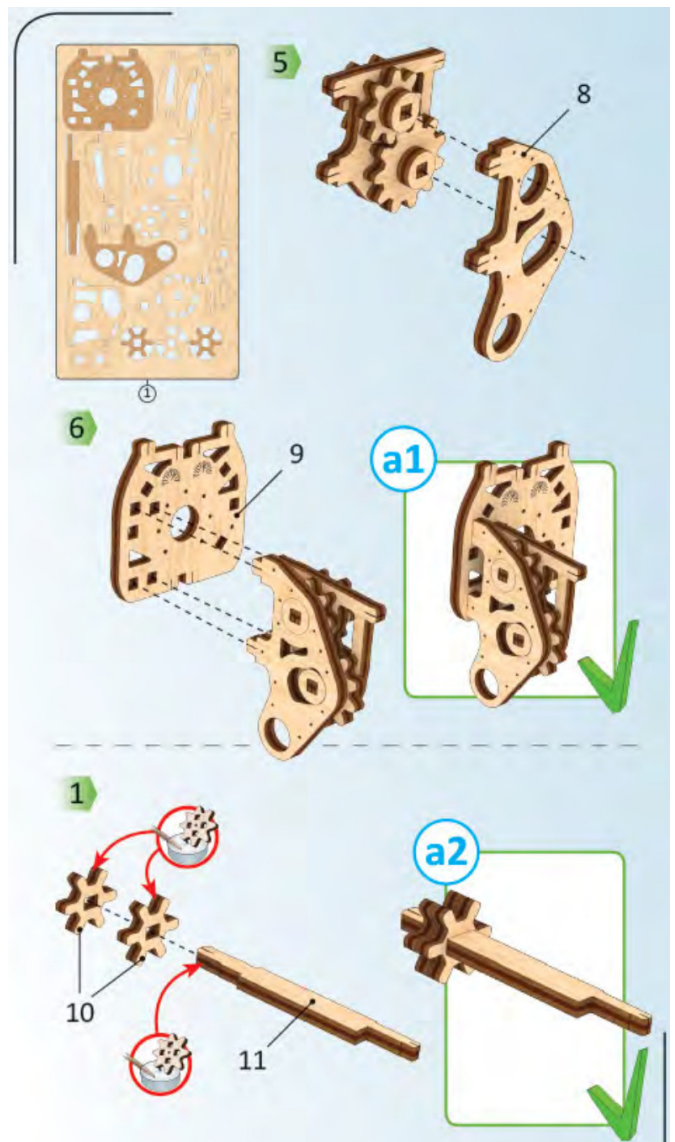
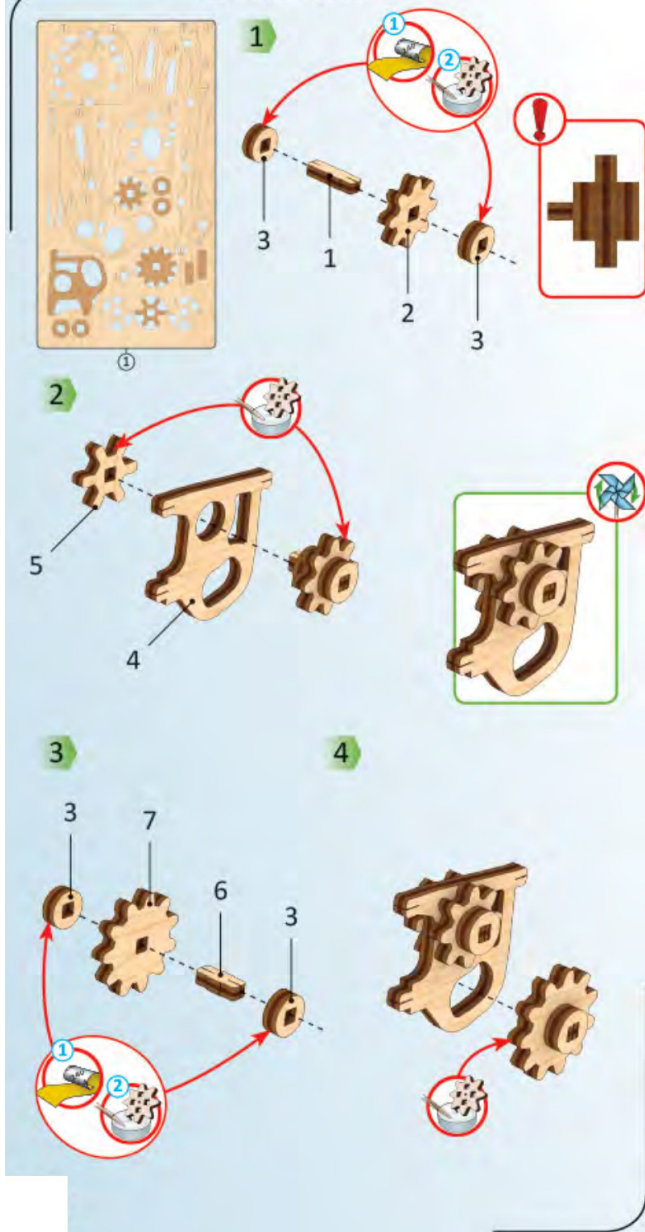
This is not a structural component; it is a tool for measurement and assembly.



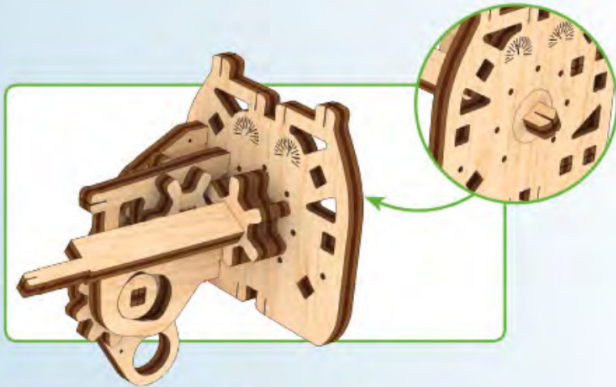
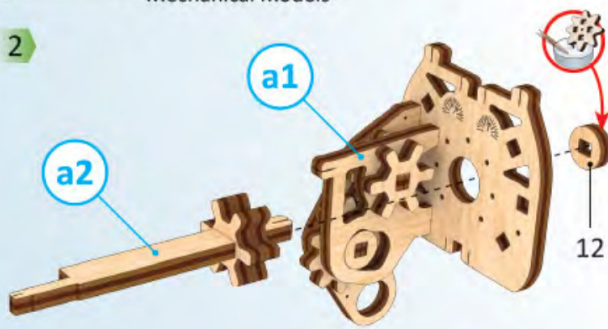
It's easier to pull out some parts with the +(helper (H)>>.



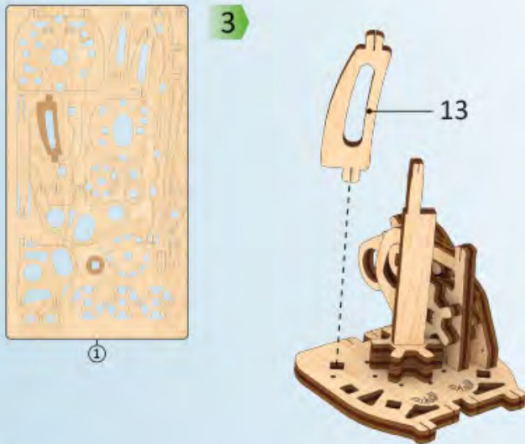
Mechanical models



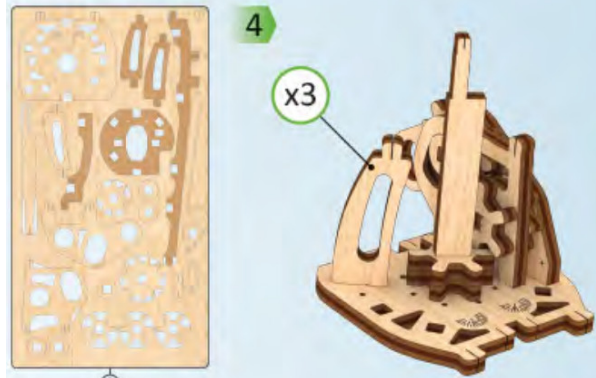
2



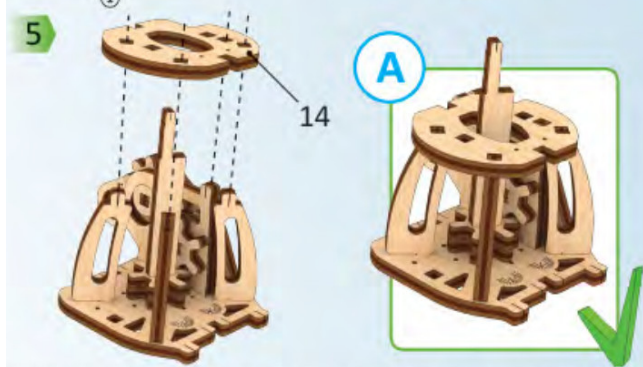
3



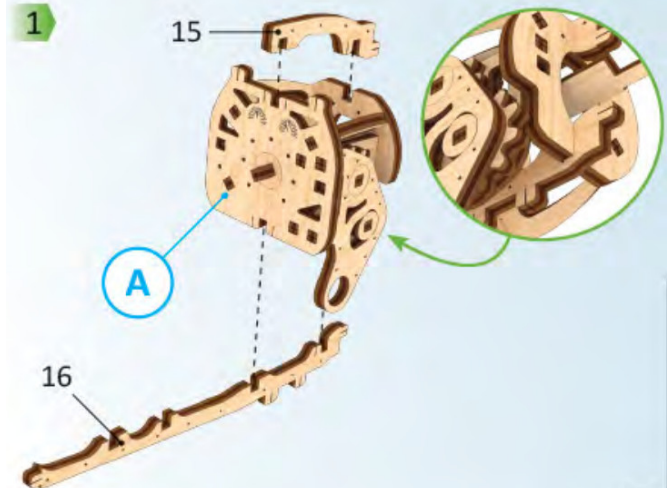
4

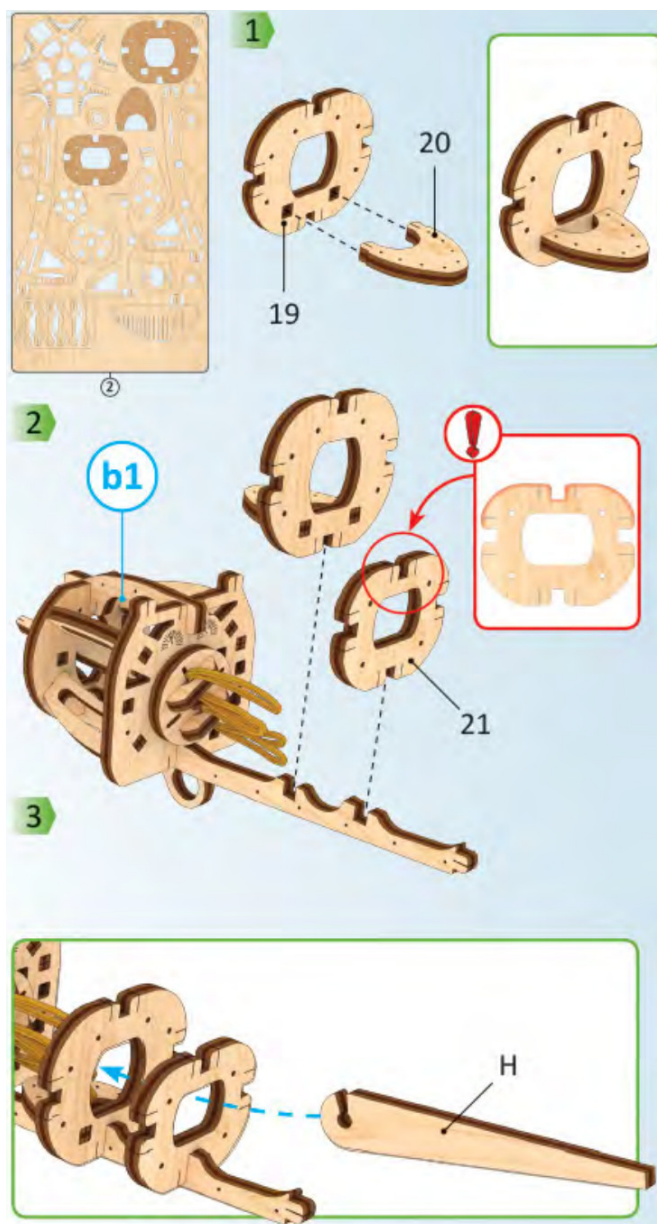
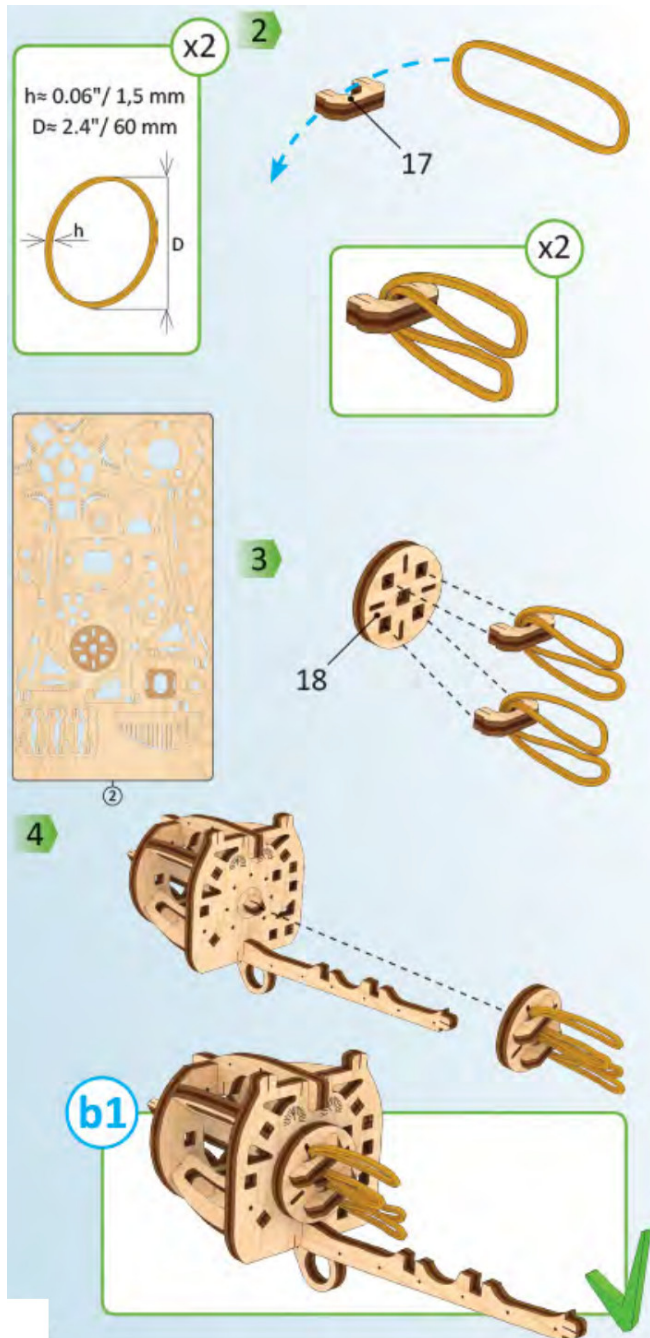


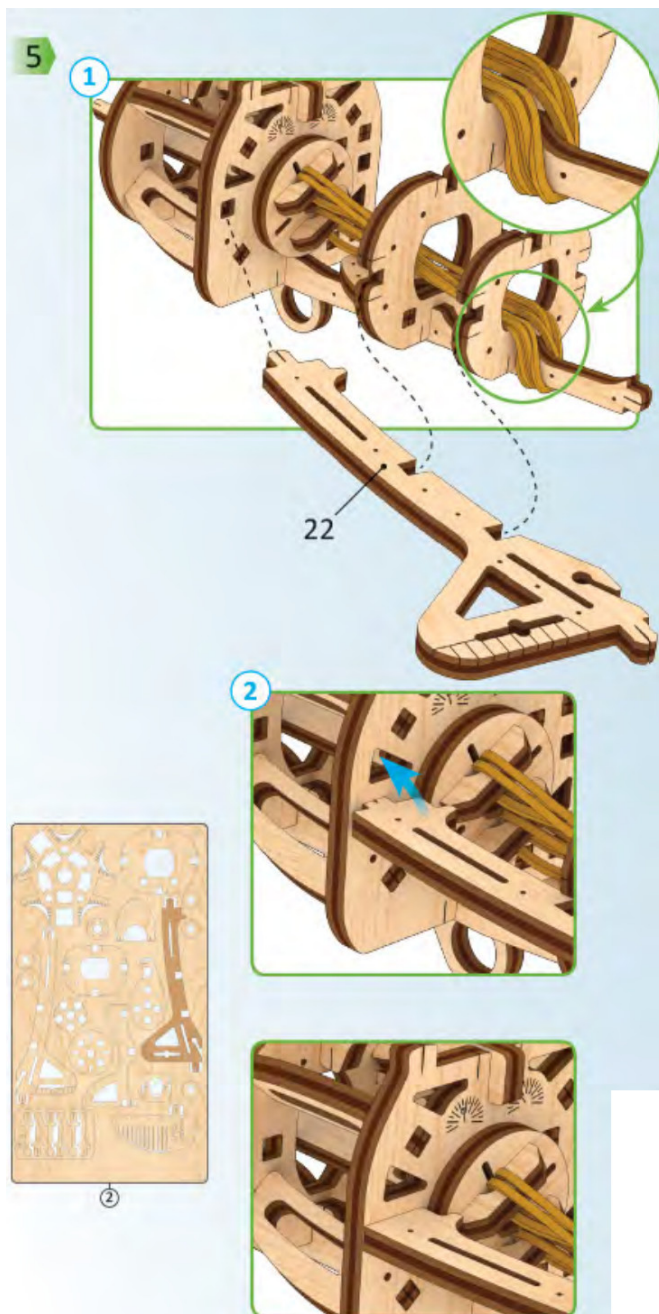
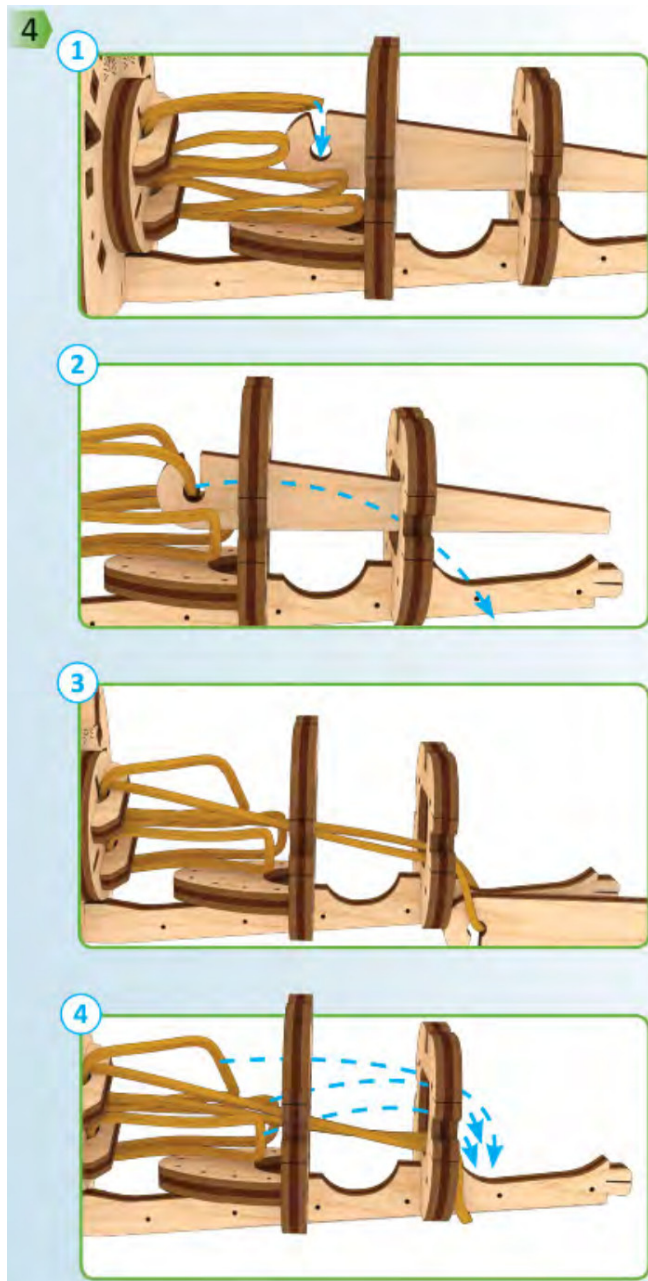
5



1

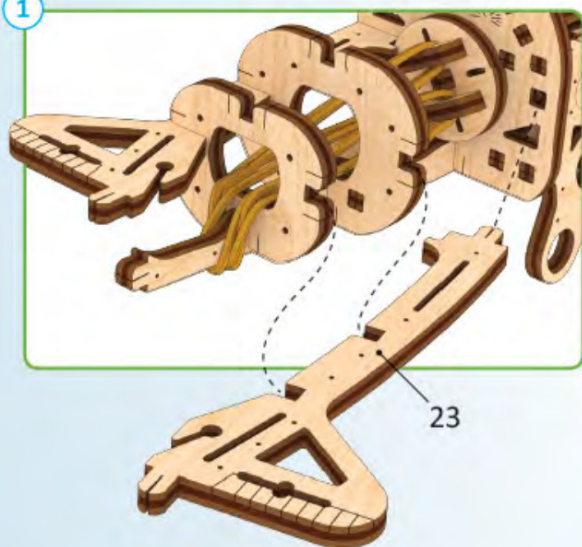






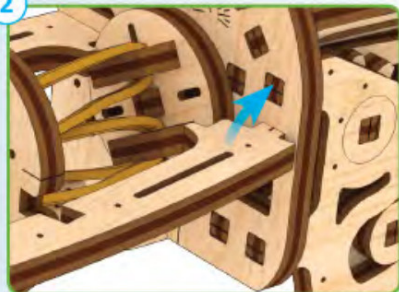
6

1



23

2

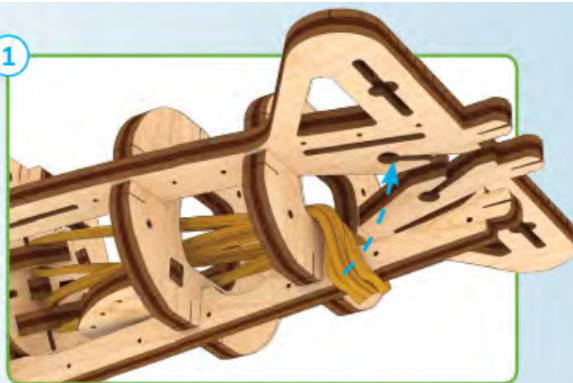


2

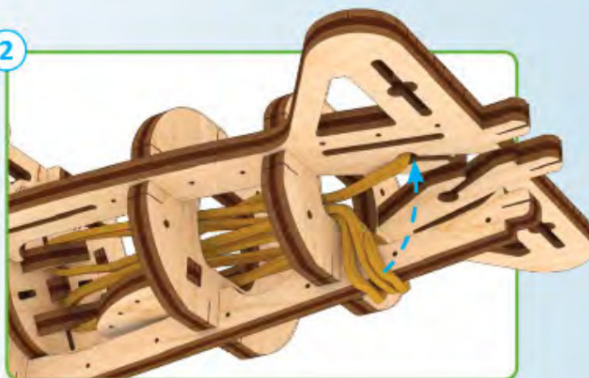


7

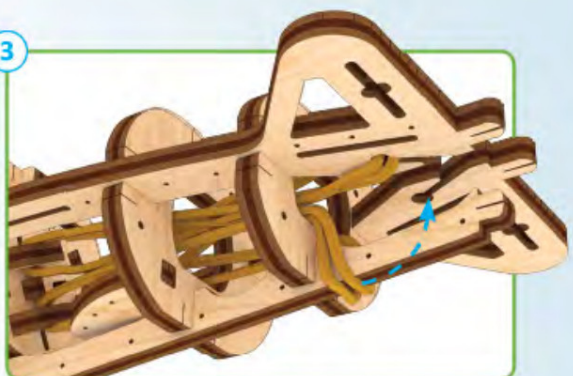
1

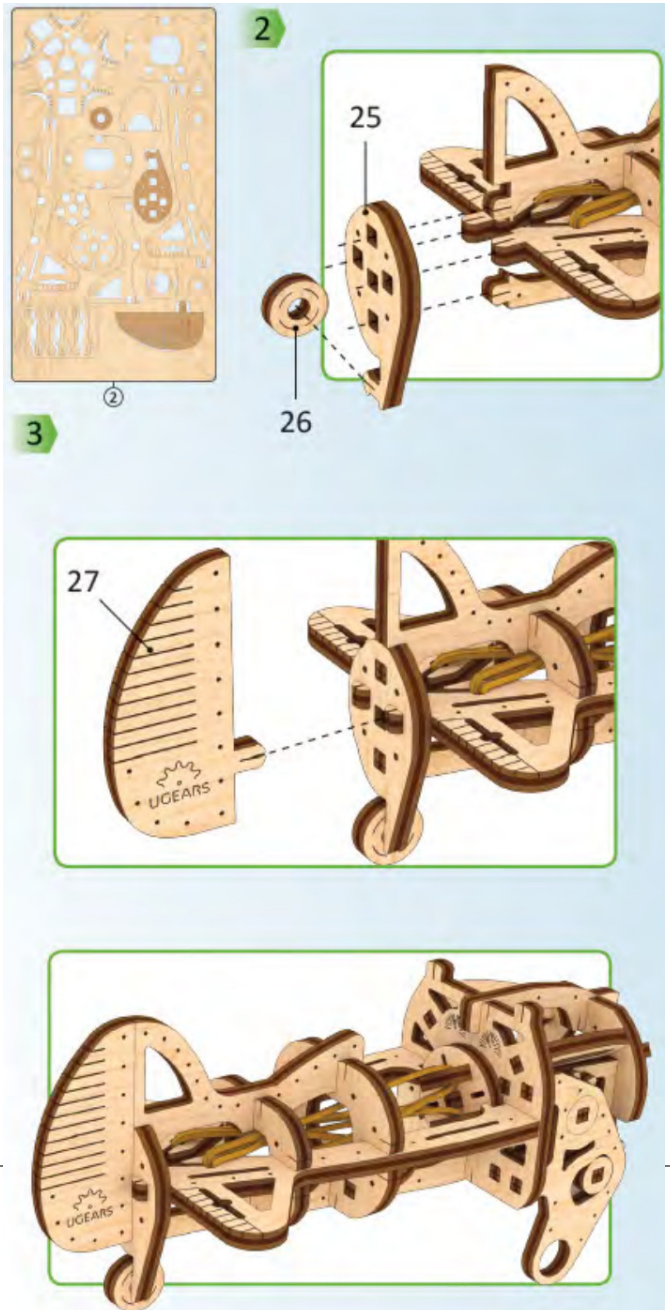
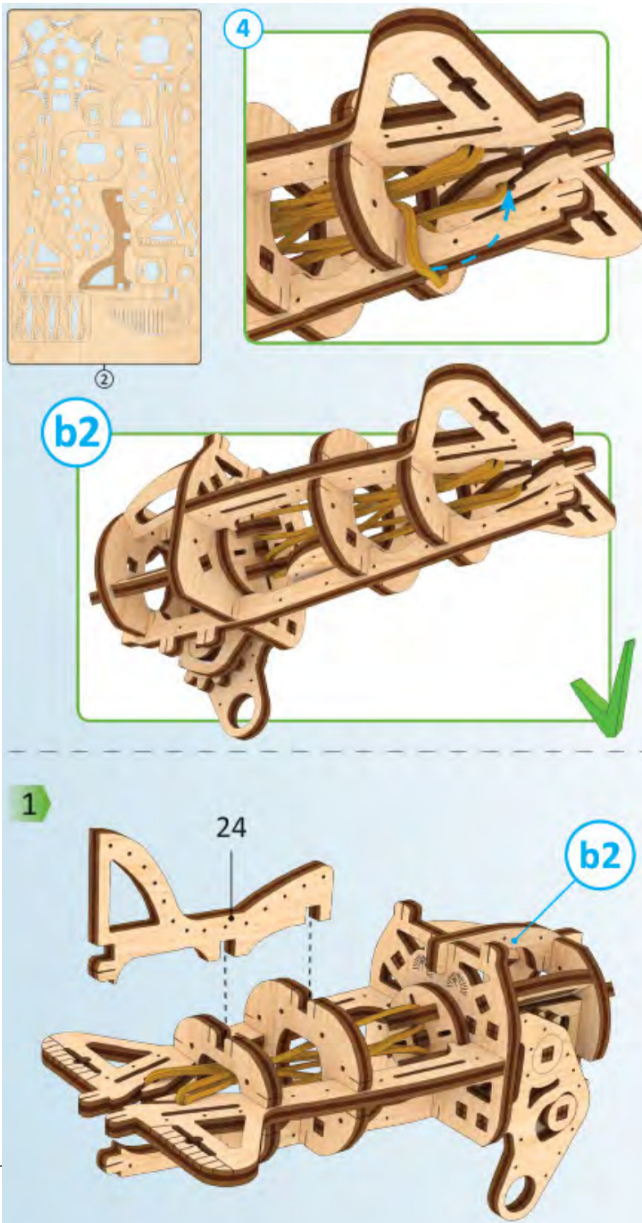


2



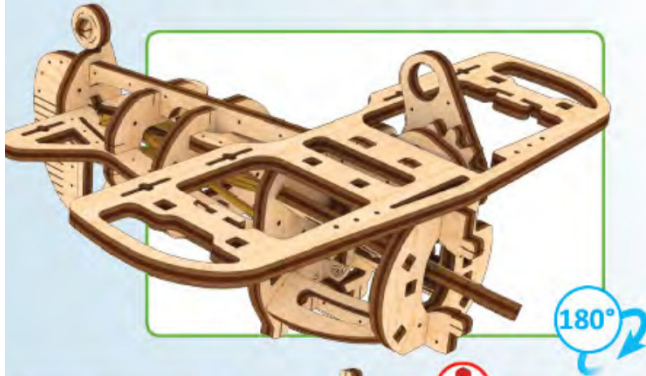
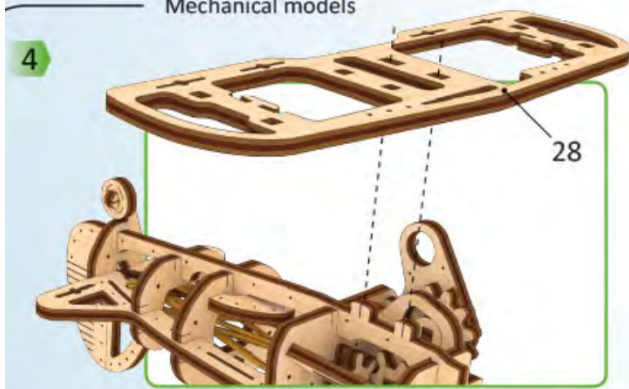
3



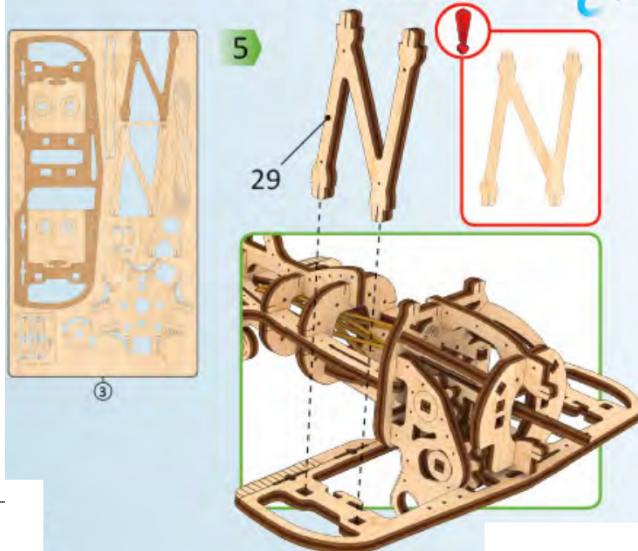


Mechanical models

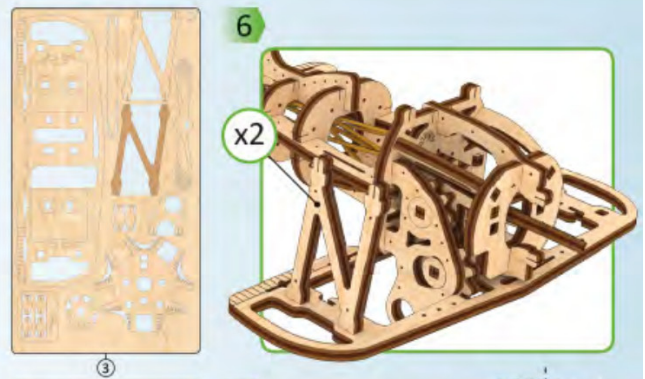
4



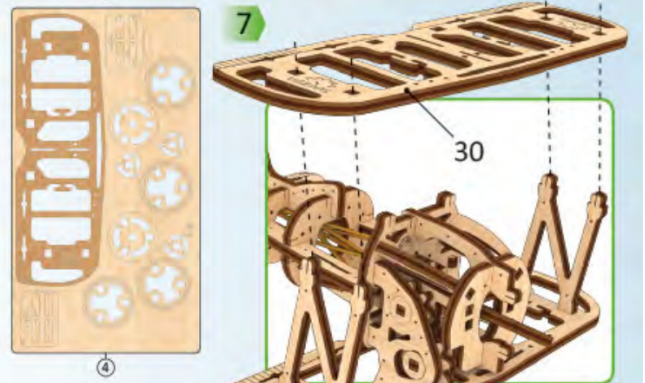
5



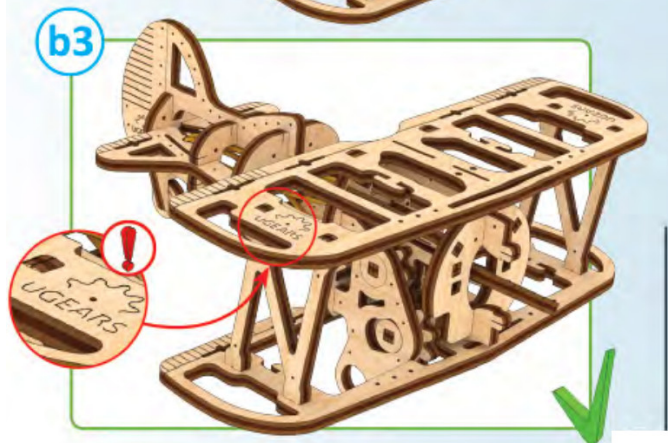
6

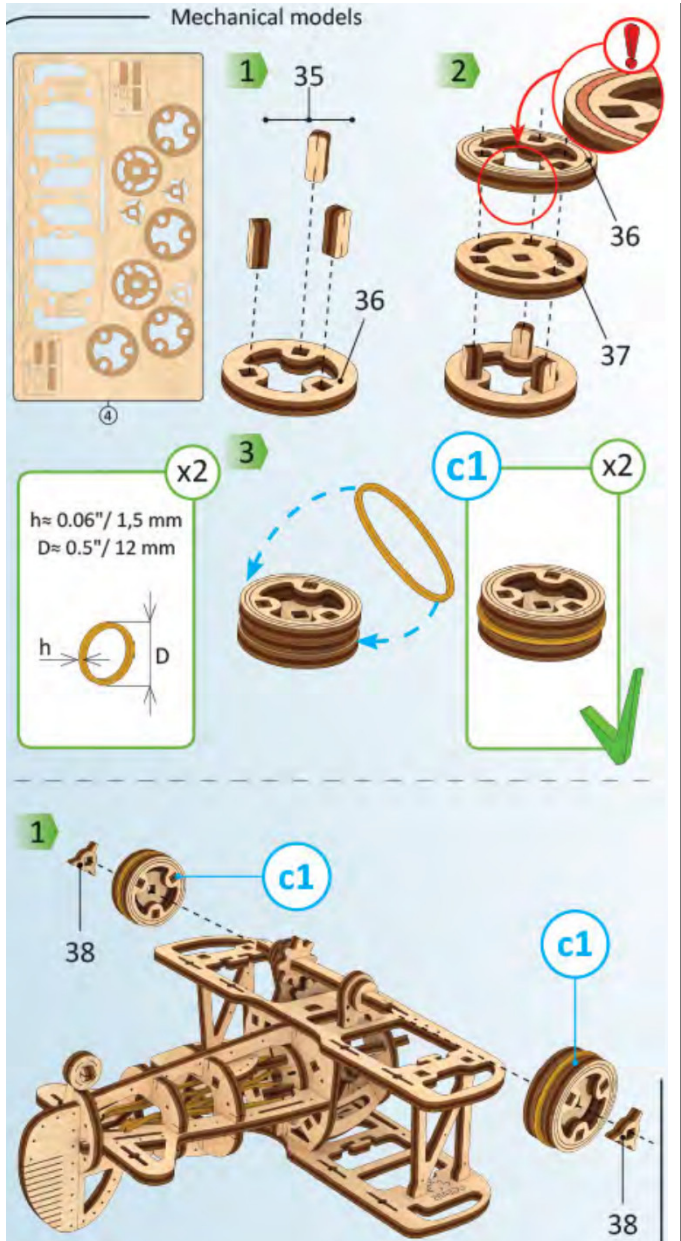
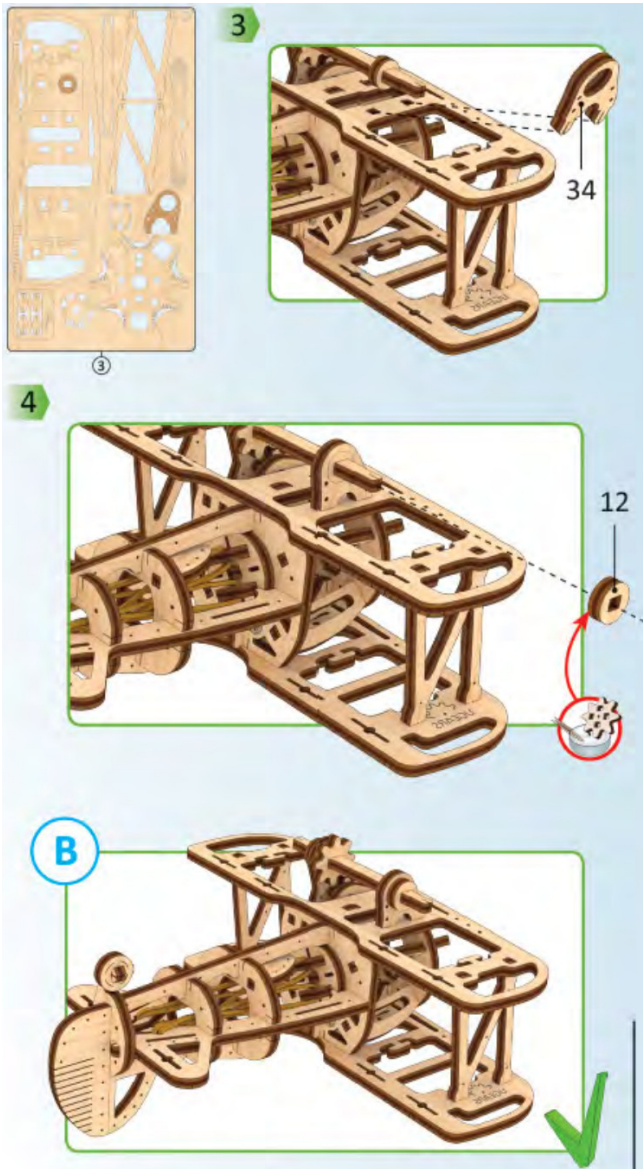


7

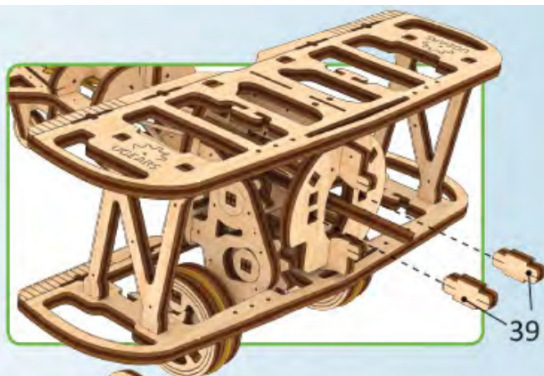


b3

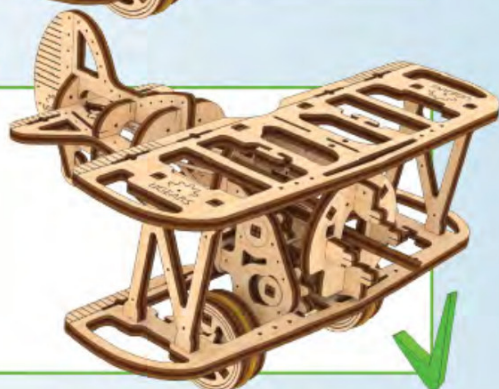




2



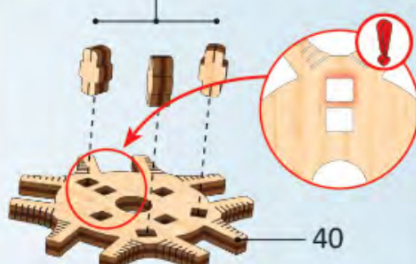
c2



1



41



40



2



②

1

2

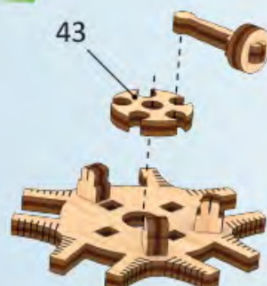
3

x5



3

43



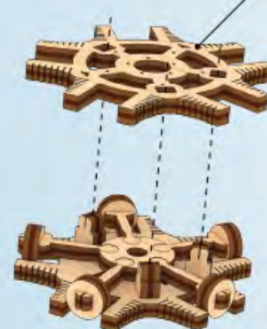
4

x5



5

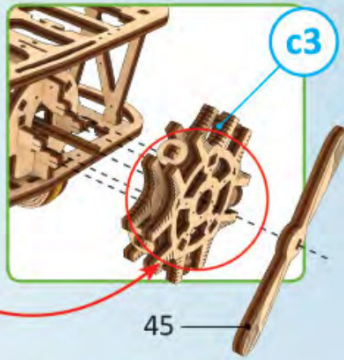
44



c3



1

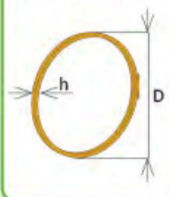


45

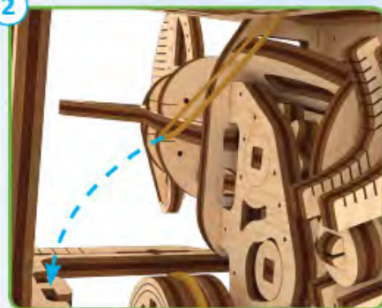
2

x2

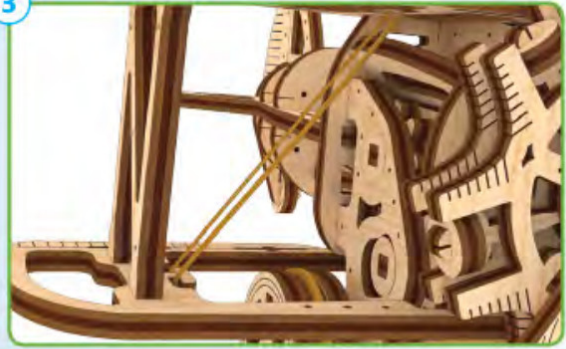
$h \approx 0.06'' / 1,5 \text{ mm}$
 $D \approx 1'' / 25 \text{ mm}$



2



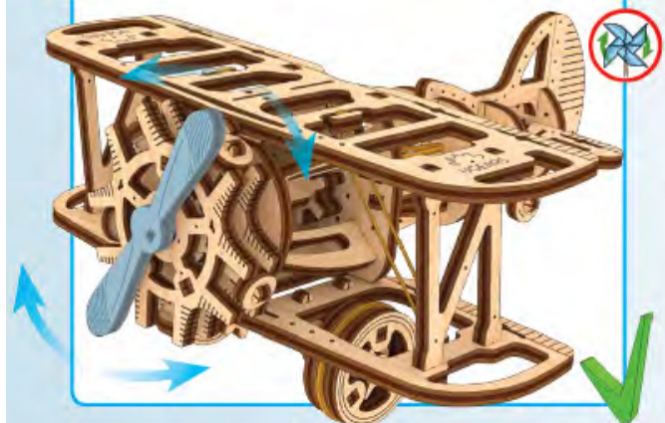
3



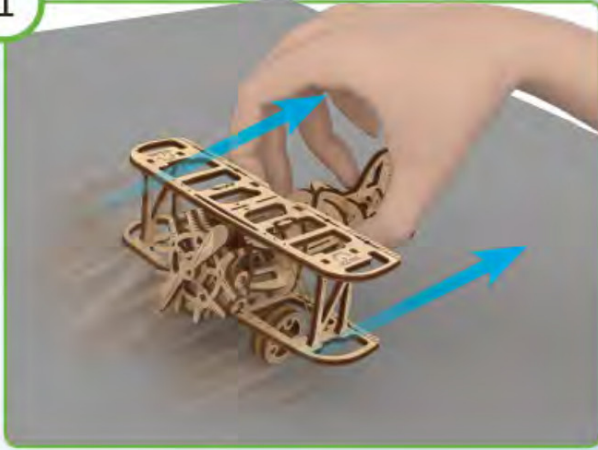
4



C



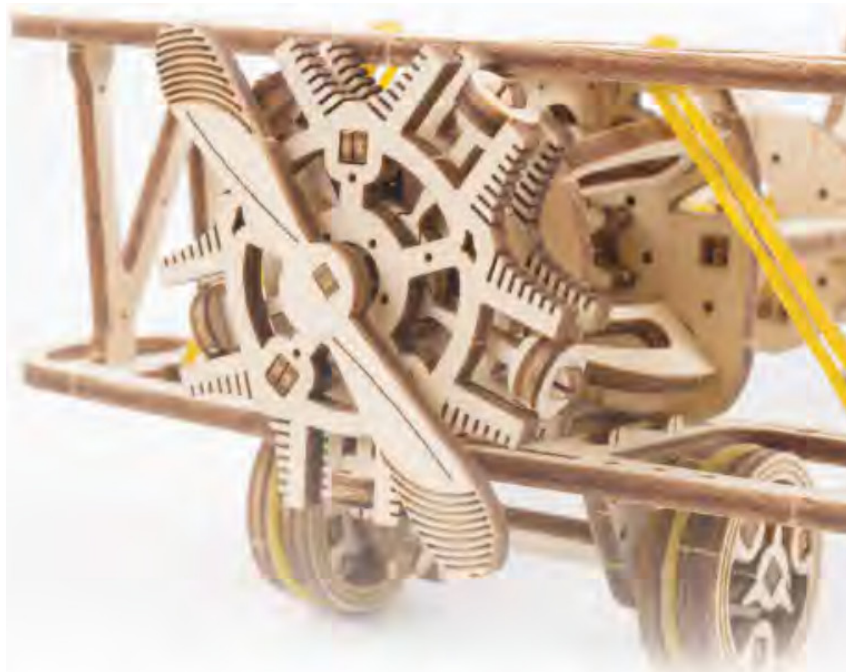
1



2



After stopping the engine, the model continues to move by inertia.



https://ugearsmodels.com/qr/mini-biplane.html?utm_source=scan-youtube&utm_medium=mini-biplane&utm_campaign=qr

Customer support

customerservice@ugearsmodels.com

Thanks for following along on this journey with us.



Documents / Resources

<p>Model Mini-biplane</p> <p>100% Wood 100% Metal 100% Plastic 100% Rubber 100% Paper 100% Cardboard 100% Foam 100% Glass 100% Stone 100% Metal 100% Plastic 100% Rubber 100% Paper 100% Cardboard 100% Foam 100% Glass 100% Stone</p>	<p>UGEARS Mini-biplane Mechanical Model Kit [pdf] Instruction Manual Mini-biplane Mechanical Model Kit, Mini-biplane, Mechanical Model Kit, Model Kit, Kit</p>
--	---

