



## UDI022 Stable udirc with Quality Sound Output Instruction Manual

[Home](#) » [Udirc](#) » UDI022 Stable udirc with Quality Sound Output Instruction Manual 

### Contents

#### 1 UDI022 Stable udirc with Quality Sound Output

- 1.1 Ready before sailing
- 1.2 Boat battery Charge
- 1.3 Boat Battery Installation Method
- 1.4 Electronic speed controller(ESC)
- 1.5 Transmitter Preparation
- 1.6 Battery installation of transmitter
- 1.7 Introduction of main interface function
- 1.8 Manipulation method
- 1.9 Check before sailing
- 1.10 Water cooling system
- 1.11 Forward
- 1.12 Backward
- 1.13 Turn left
- 1.14 Turn right
- 1.15 Low speed
- 1.16 High speed
- 1.17 Self-Righting Hull
- 1.18 Parts Replacement
- 1.19 Replacement the Steel Rope
- 1.20 Replac the steering gear
- 1.21 Safety Precautions
- 1.22 Troubleshooting Guide
- 1.23 WARNING

#### 2 FCC Note

#### 3 Documents / Resources

#### 4 Related Posts

## UDI022 Stable udirc with Quality Sound Output



### Note

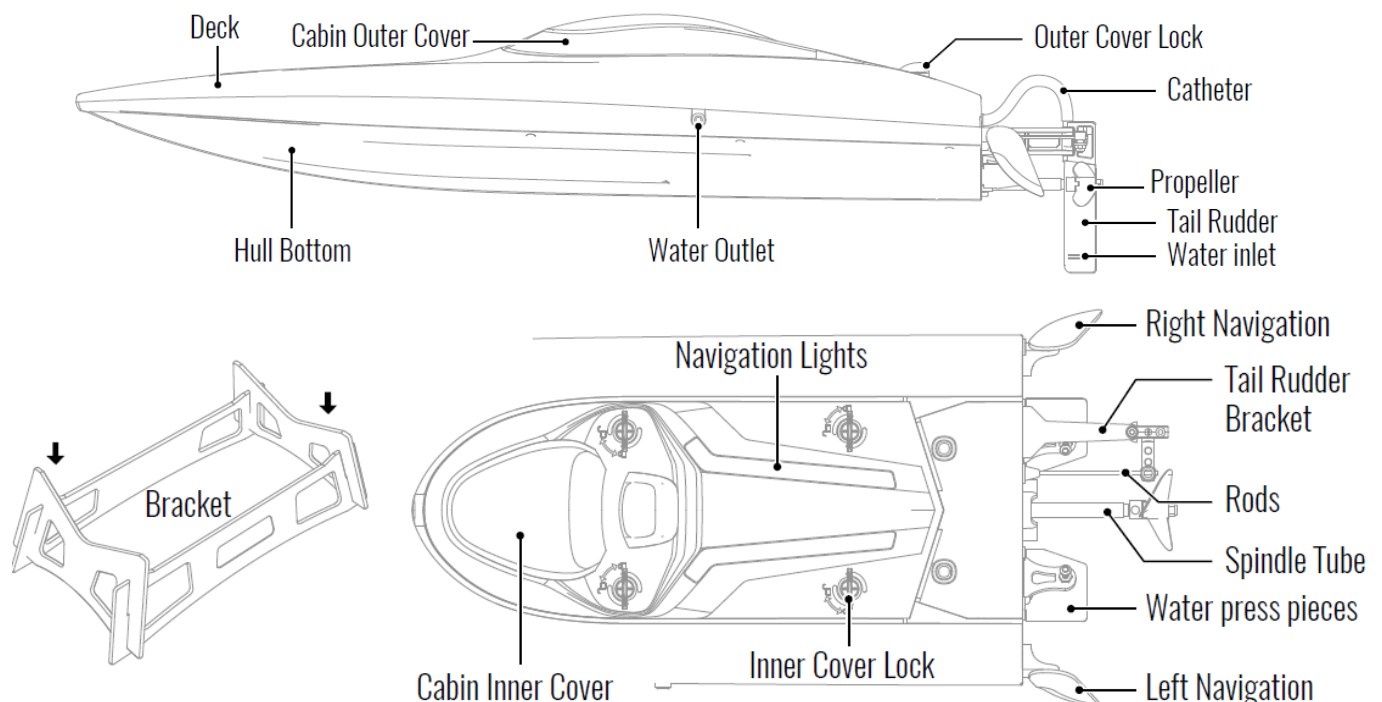
- This product is suitable for users over 14 years old.
- Stay away from the rotating propeller
- Read the “important statement and safety guidelines” carefully. <https://udirc.com/disclaimer-and-safety-instructions>

### Li-Po Battery Disposal & Recycling

Wasted Lithium-Polymer batteries must not be placed with household trash. Please contact local environmental or waste agency or the supplier of your model or your nearest Li-Po battery recycling center. Our company's products are improving all the time, design and specifications are subject to change without notice. All the information in this manual has been carefully checked to ensure accuracy, if any printing errors, our company reserve the final interpretation right.

### Ready before sailing

### Preparation the boat

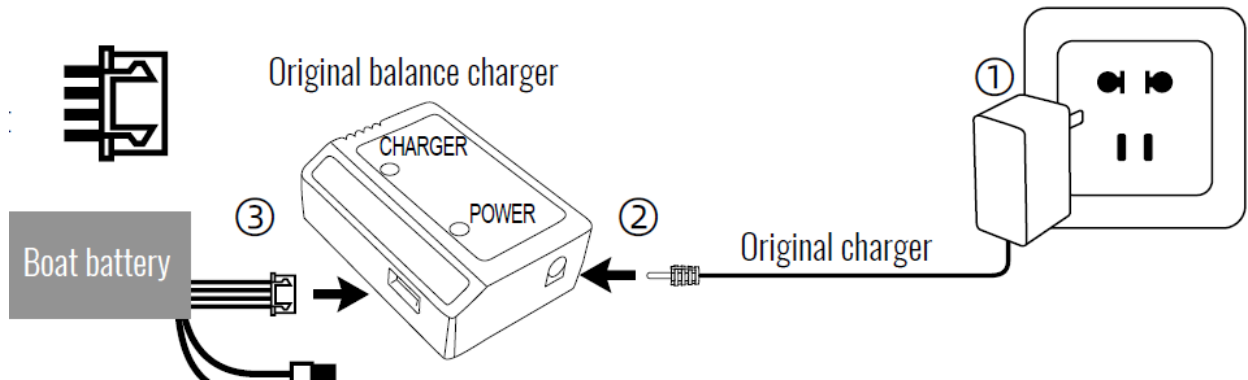


## Boat battery Charge

**The battery of the original boat model is insufficient, so it must be charged and saturated before use.**

Connect the original charge with charge plug first and then connect the balance charge, finally connect the boat battery. And balance charge "CHARGER" "POWER" light keeps bright when charging. And the "CHARGER" light turns off and "POWER" light keeps bright when fully charged. Battery should not be placed in the hull when charging.

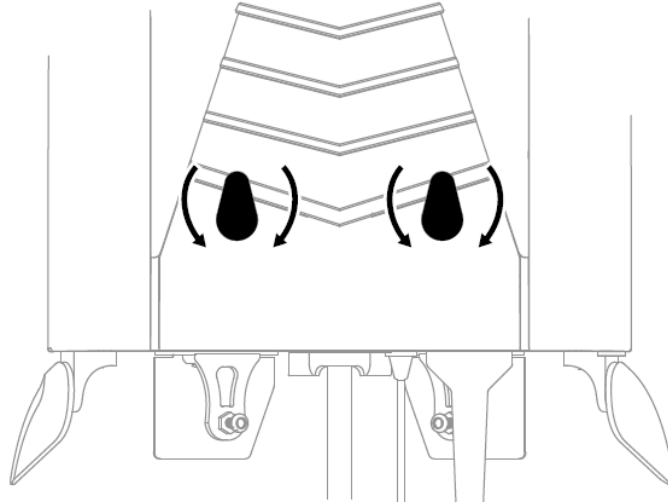
The battery must be cooled before charging .



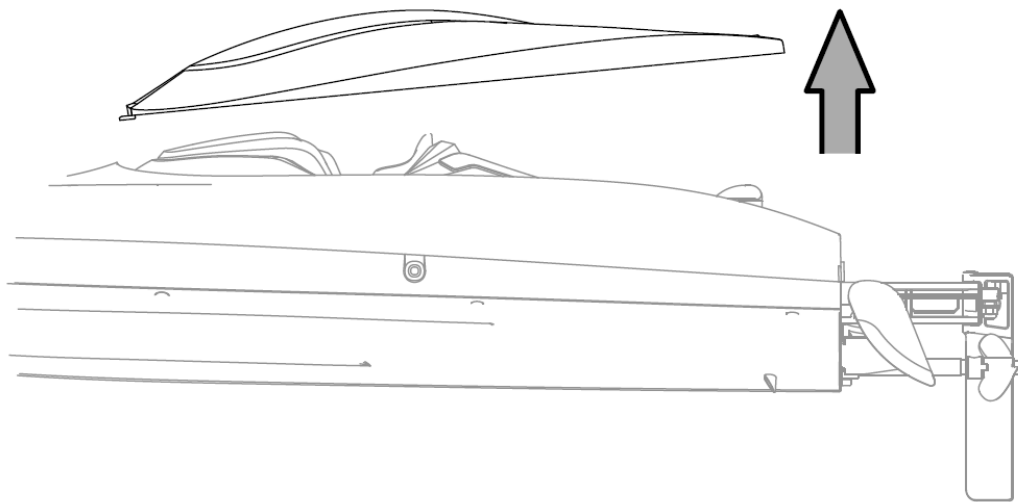
**Warning:** Must be supervised while charging Please use the included USB charging cable and make sure it is properly connected.

## Boat Battery Installation Method

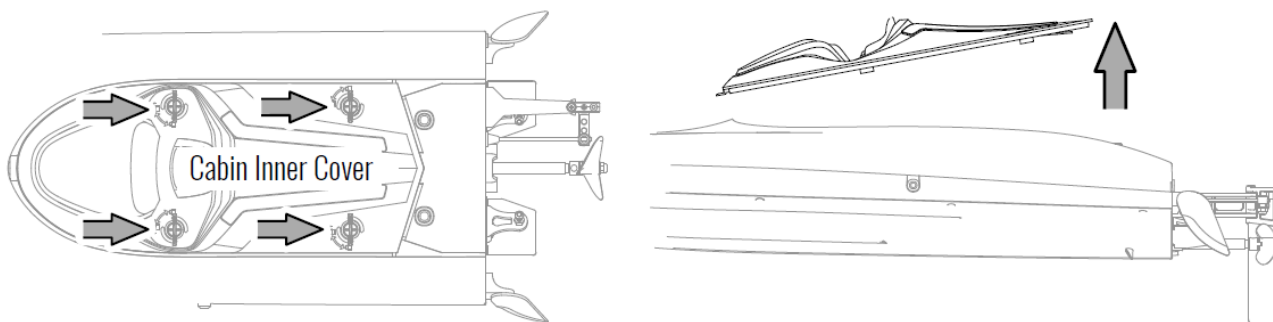
1. Twist to left or right to open the outer cover lock.



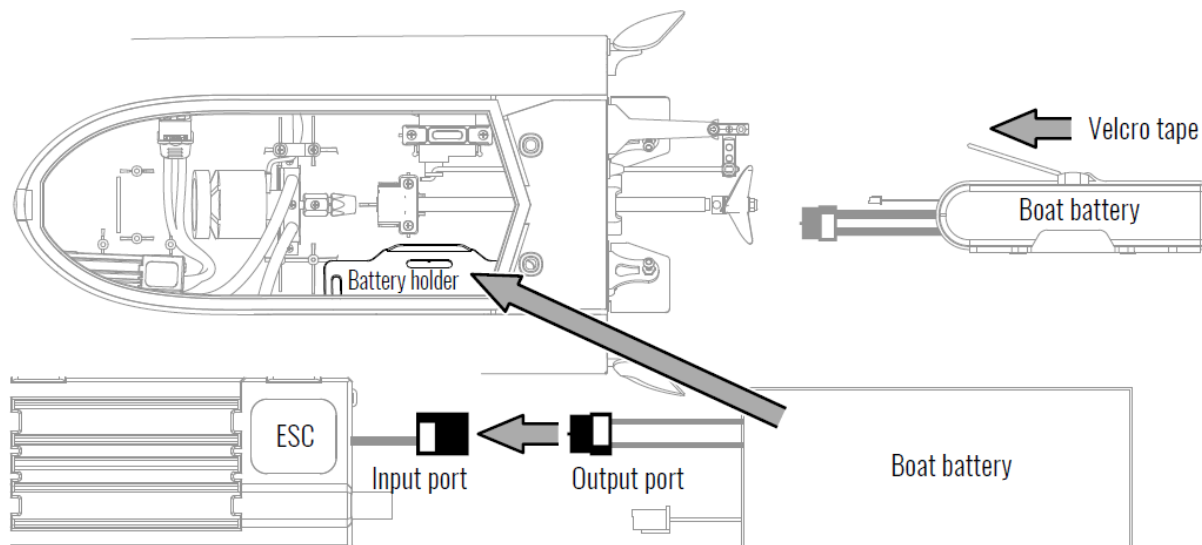
2. open up the cabin cover.



3. According to the mark on the surface of the inner cover, unlock the lock and take out the inner cover upward.



4. Put the Lipo battery into the boat battery holder. Then use velcro tape to fasten the battery is OK.

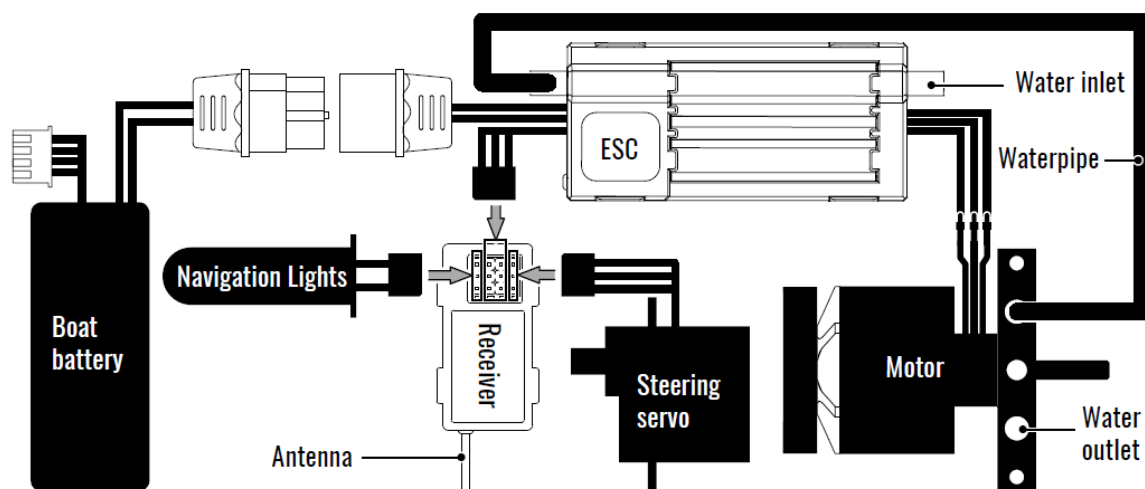


Properly connected the hull input port to the output port of the Boat battery.

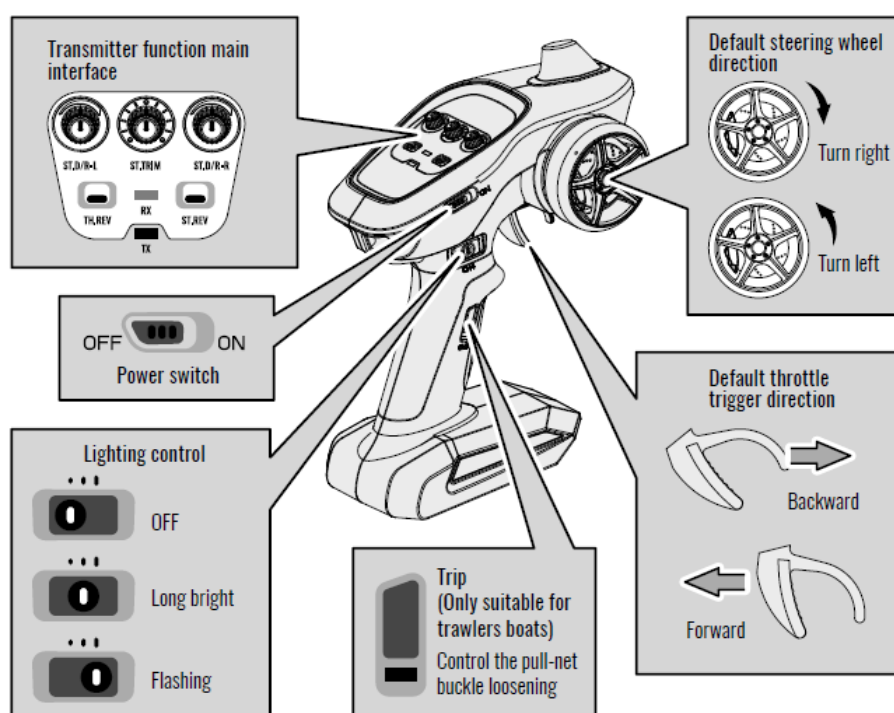
**Notice:** The Lipo battery wires need to put aside of the boat to avoid tangled or broken off by the rudder wheels.

5. Install the inner-cover, outer-cover to the hull and then tighten the inner cover lock.

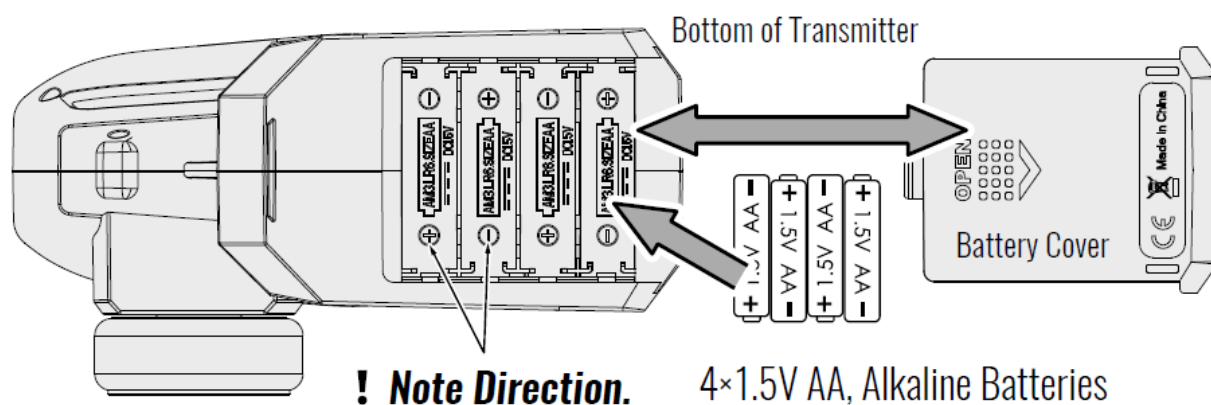
**Electronic speed controller(ESC)**



## Transmitter Preparation

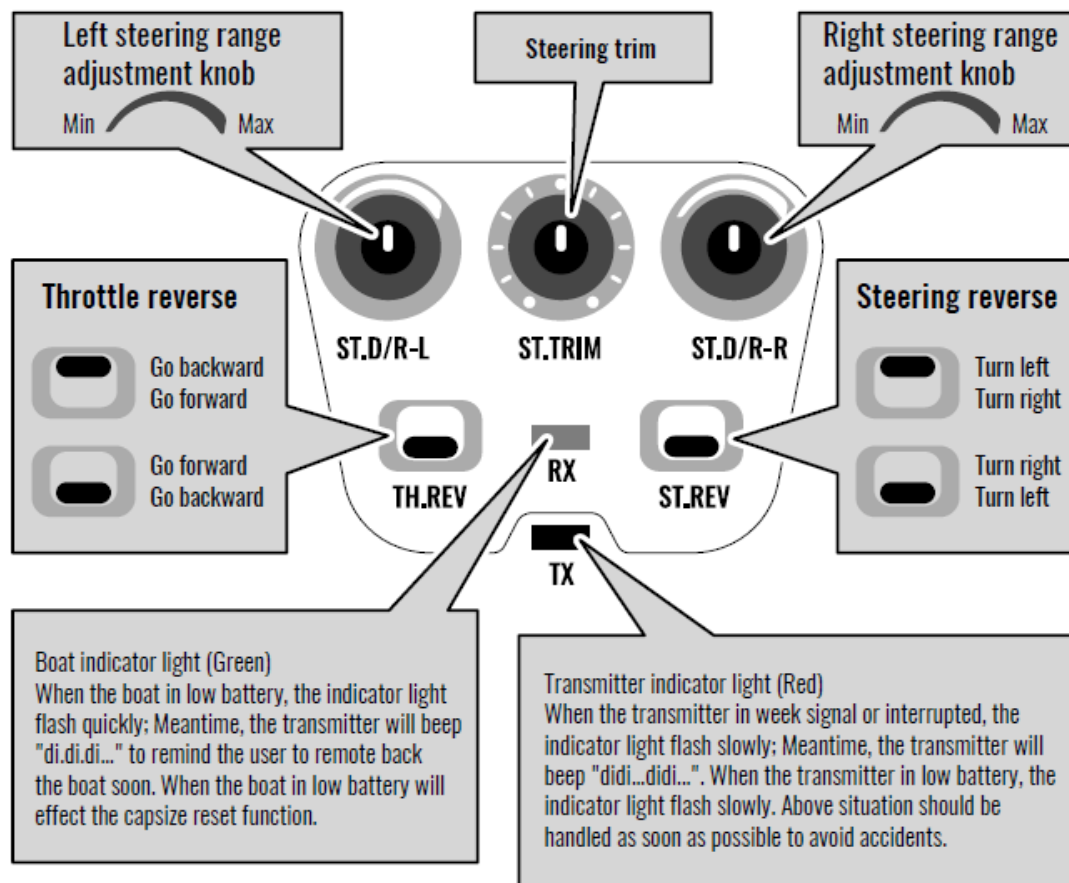


## Battery installation of transmitter

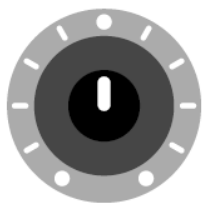


Open the transmitter battery cover. Install batteries. Follow the direction of batteries designated in the inside of the battery box.

## Introduction of main interface function

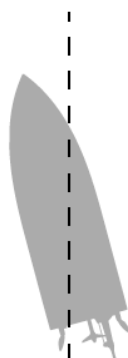


- You can use the steering amplitude adjustment knob to adjust the left steering Angle of the ship model.



**ST.TRIM**

**Steering trim**



The knob turns to the right when the boat is turn to left.



The knob turns to left when the boat is turn to right.



- When the steering wheel is in the center position, if the model cannot sail in a straight line, please use the steering adjustment knob to adjust the left and right direction of the hull.



**ST.D/R-R**

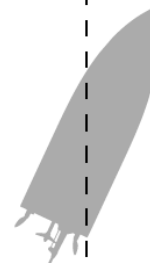
**Right steering range adjustment**



Minimum steering angle



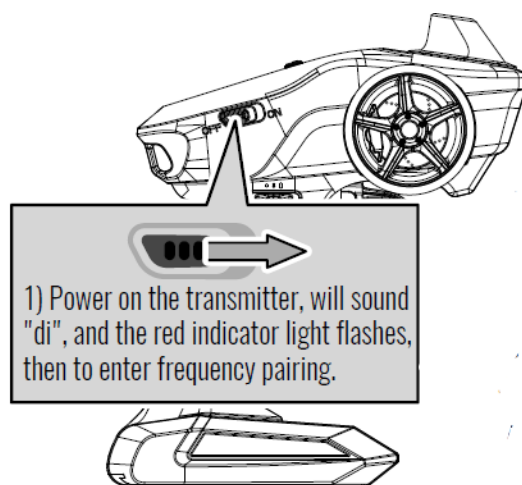
Maximum steering angle



- You can used the steering amplitude adjustment knob to adjust the right steering Angle of the ship model.

**Manipulation method**

**Frequency matching**



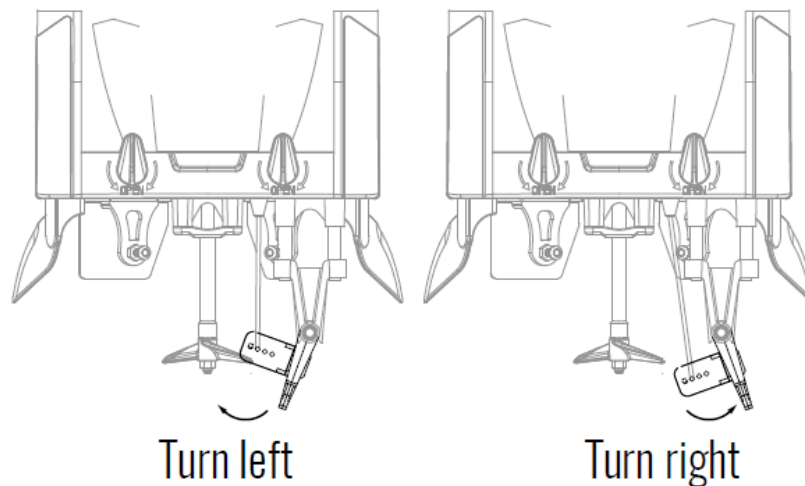
Please make sure the transmitter throttle trigger and Steering wheel to normal.

1. Connected the boat battery, the transmitter will sound “didi”, it means frequency pairing successful.
2. Tighten the hatch cover.

It is recommended to be familiar with the operation on the surface of the water before long distance navigation.

**Notice:** If there is a few boats to play together, you need to code pairing one by one, and can not do it at the same time to avoid improper operation and cause danger.

#### Check before sailing

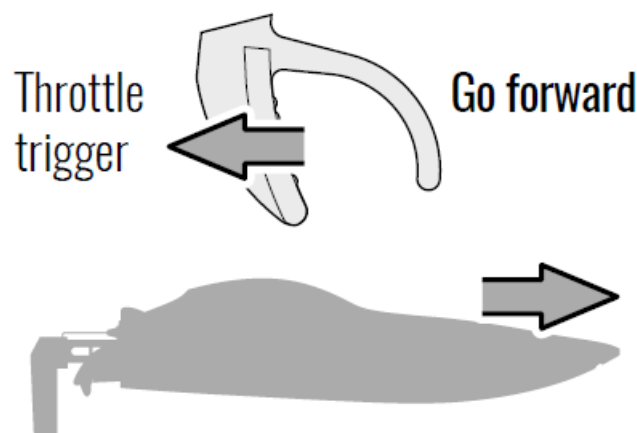


1. Check the rotation direction of propeller once power on. Pull back the throttle trigger of transmitter slowly, the propeller will spin counterclockwise. Push forward the throttle trigger slowly, the propeller will spin clockwise.
2. Twist the rudder knob towards counterclockwise, the steering gear will turn left; Twist the Rudder Knob clockwise, the steering gear will turn right.
3. Make sure that the boat cover is locked up and buckled.

#### Water cooling system

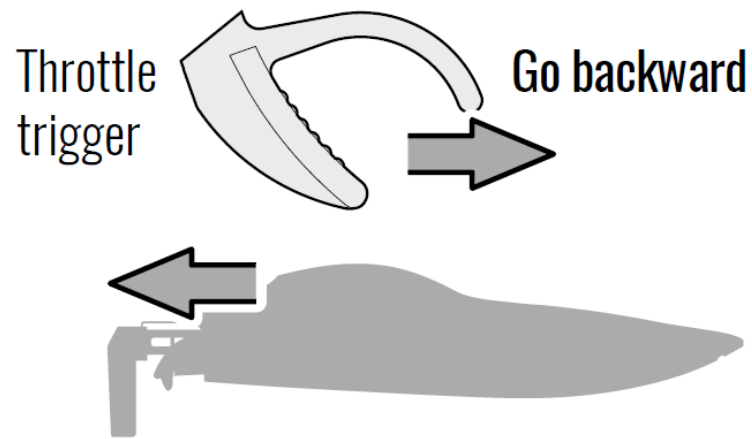
Don't fold the water-cooling hose and keep it smooth inside. The motor lowers the temperature by flowing water. During the voyage, water flows through the heat pipe around the motor, which has a cooling effect on the motor.

#### • Forward

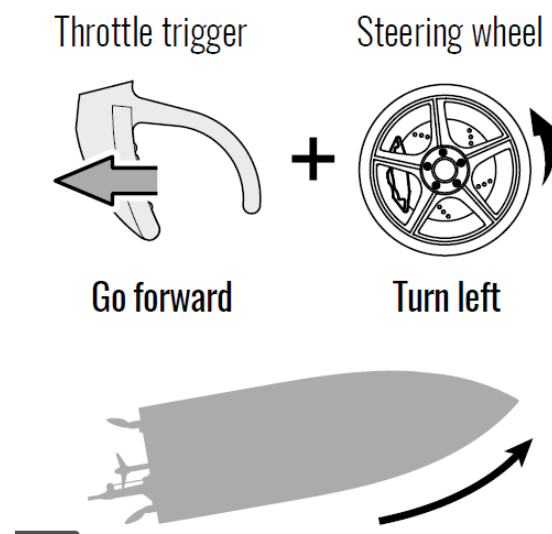




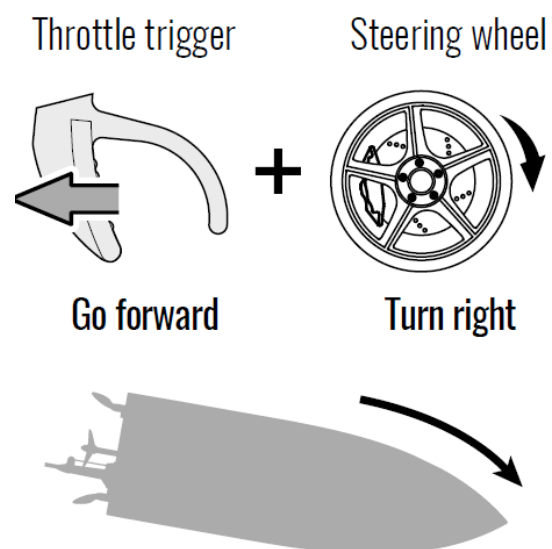
- Backward



- Turn left

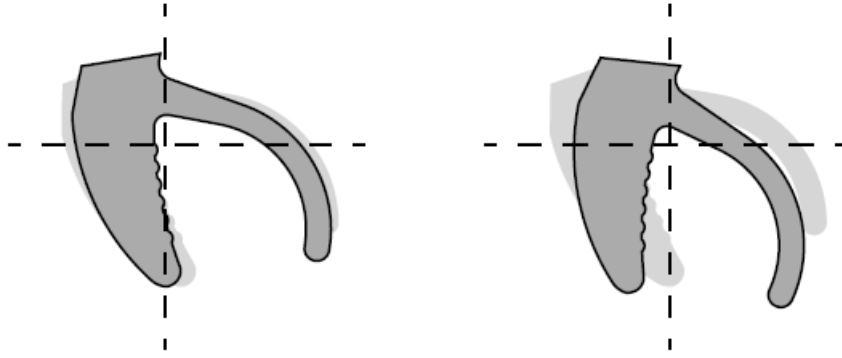


- Turn right



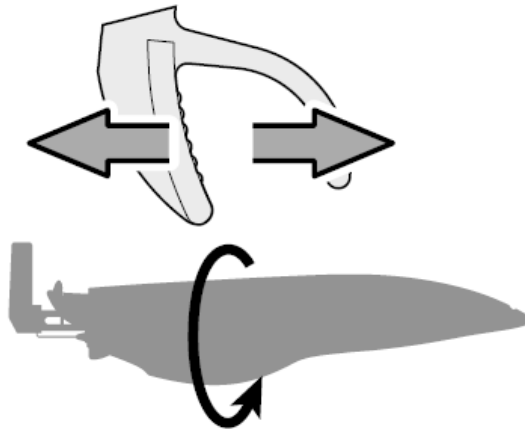
- Low speed

- High speed



### Self-Righting Hull

If the boat capsizes, Push forward and backward the throttle trigger of the transmitter and then pull back at once. The boat will then return to normal, the capsize reset function will turn off automatically when the boat is in low battery.



### Parts Replacement

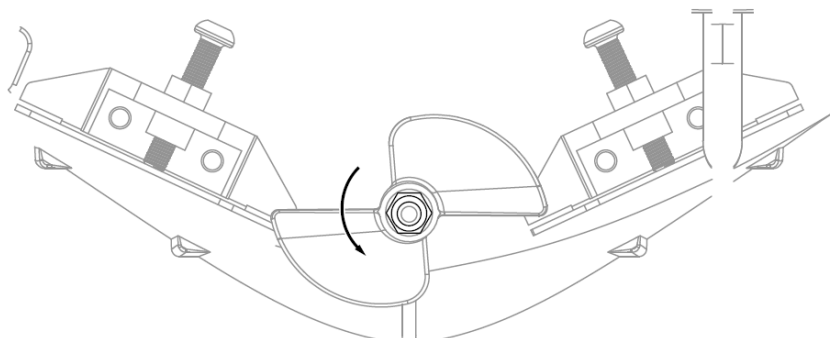
#### Propeller Replacement

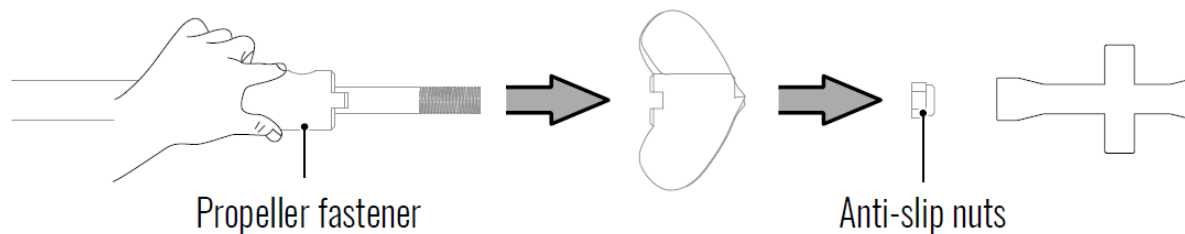
##### Remove:

Disconnect the power of boat and hold the propeller fasteners, Unscrew the anti-skid nut counterclockwise to remove the propeller.

##### Installation:

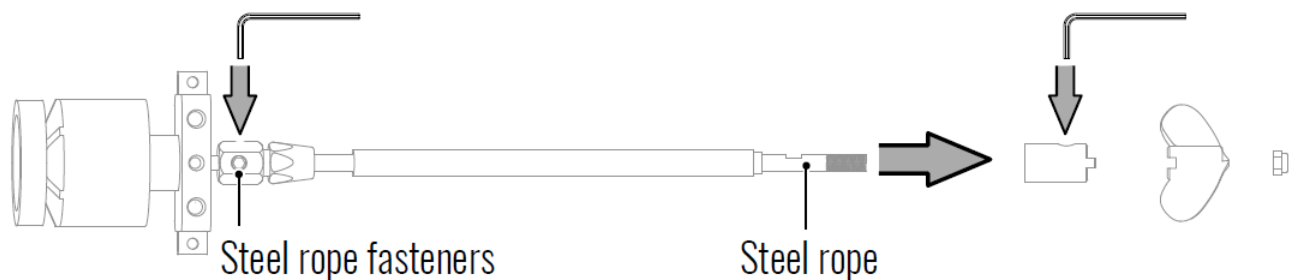
Install the new propeller and tighten the anti-skid nut clockwise after the notch position fits the fastener.





### Replacement the Steel Rope

**Remove:** Remove the propeller, unscrew the propeller fastener and steel rope fastener used a hex wrench and then draw out the steel rope.



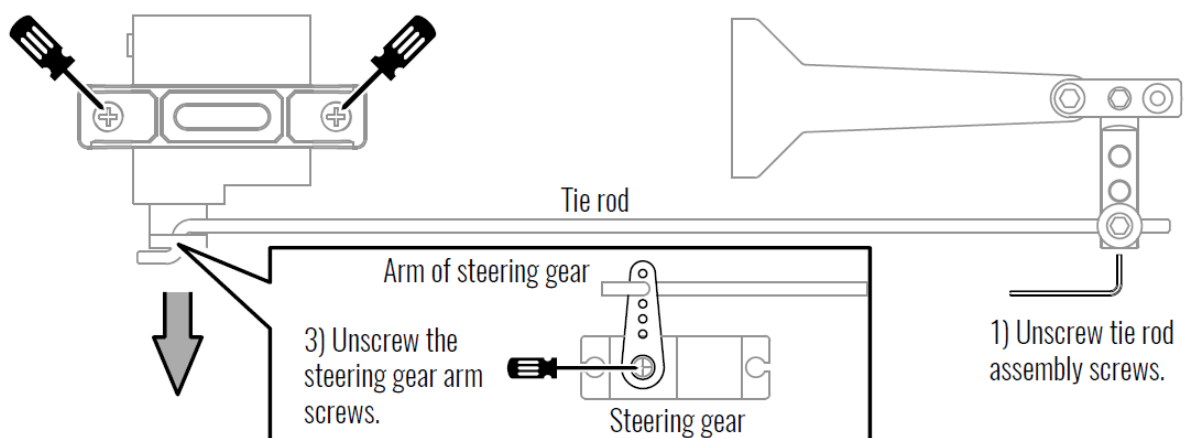
**Installation:** Replace the new steel rope, the installation step is opposite to the removal step.

**Noted:** When the propeller is entangled with debris, the steel rope is easy to burst. Please be sure to avoid debris in the water. The replacement of steel rope must be carried out with the battery power cut off.

### Replac the steering gear

**Disassembly** Turn off the power of boat

- Unscrew steering gear and fixing screws and then take out fixing parts.



- The steering gear is separated from the steering gear arm.

**Installation** When the new steering gear is powered on, the installation should be conducted in the direction of disassembly sequence.

Replace the steering gear with powered on, please noted the propeller turns unexpectedly.

### Safety Precautions

1. Turn on the transmitter power first and then turn on the boat power before playing; Turn off the boat power first and then turn off the transmitter power when finish playing.
2. Make sure the connection is solid between battery and motor etc. The ongoing vibration may cause bad connection of power terminal.
3. Improper operation may cause impact to the boat and damage the hull or propeller.
4. It is forbidden to sail in the water where people are useful and sail away from salt water and sundry water.
5. The battery must be take out after playing to keep the cabin dry and clean.

### Troubleshooting Guide

Problem	Solution
The transmitter indicator light is off	1) Replace the transmitter battery.
	2) Please make sure the battery is installed correctly.
	3) Clean the dirt from metal contacts in battery groove.
	4) Please make sure turn on the power.
Unable to frequency	1) Operate the boat step by step in accordance with the user manual.
	2) Make sure signal interference nearby and keep away.
	3) The electronic component is damaged for frequent crash.
The boat is under-powered or can not go forward	1) Make sure whether the propeller is damaged or replace a new one.
	2) When the battery is low, charge it in time. Or replace it with a new battery.
	3) Make sure install the propeller correctly.
	4) Make sure whether the motor is damaged or replace a new one.
The boat tilts to one side	1) Operate according to the "trimmer" as per instructions.
	2) Calibrate the steering gear arm.
	3) The steering gear is damaged, replace a new one.

### WARNING

**Warning:** The product should only be used by adults and children over 14 years. Adult supervision is required for

children under 14 years.

FCC Note

This equipment has been tested and found to comply with the limits for a Class B digital device, pursuant to Part 15 of the

**FCC Rules.** These limits are designed to provide reasonable protection against harmful interference in a residential installation. This equipment generates uses and can radiate radio frequency energy and, if not installed and used in accordance with the instructions, may cause harmful interference to radio communications. However, there is no guarantee that interference will not occur in a particular installation. If this equipment does cause harmful interference to radio or television reception, which can be determined by turning the equipment off and on, the user is encouraged to try to correct the interference by one or more of the following measures:

- Reorient or relocate the receiving antenna.
- Increase the separation between the equipment and receiver.
- Connect the equipment into an outlet on a circuit different from that to which the receiver is connected.

**WARNING:** Changes or modifications not expressly approved by the party responsible for compliance could void the user’s authority to operate the equipment.

FCC Notice

The equipment may generate or use radio frequency energy. Changes or modifications to this equipment may cause harmful interference unless the modifications are expressly approved in the instruction manual. Modifications not authorized by the manufacturer may void user’s authority to operate this device.

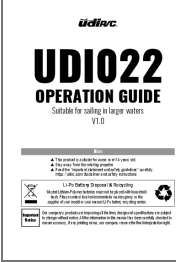
This device complies with Part 15 of the FCC Rules. Operation is subject to the following two conditions:

1. This device may not cause harmful interference.
2. This device must accept any interference received, including interference that may cause undesired operation.

FCC Radiation Exposure Statement

- The device has been evaluated to meet general RF exposure requirement.
- The device can be used in portable exposure condition with out restriction.

Documents / Resources

	<a href="#">udiRC UDI022 Stable udirc with Quality Sound Output</a> [pdf] Instruction Manual UDI022, Stable udirc with Quality Sound Output, UDI022 Stable udirc, Stable udirc, udirc, UDI0 22 Stable udirc with Quality Sound Output, udirc with Quality Sound Output, Quality Sound Out put
---	--