



Contents [[hide](#)]

- [1 UDIRC UCX2405 Rock Crawler](#)
- [2 IMPORTANT NOTICE](#)
- [3 THANK YOU](#)
- [4 WARNING](#)
- [5 ATTENTION](#)
- [6 BATTERY SAFETY](#)
- [7 PRODUCT MAINTENANCE](#)
- [8 FCC Note](#)
- [9 TROUBLESHOOTING](#)
- [10 ASSEMBLY OF MODEL BATTERY](#)
- [11 FREQUENCY MATCHING](#)
- [12 Body Assembly](#)
- [13 Front Assembly](#)
- [14 Central transmission assembly](#)
- [15 Rear Assembly](#)
- [16 Modular Assembly](#)
- [17 BUYABLE ACCESSORIES](#)
- [18 Documents / Resources](#)
 - [18.1 References](#)



UDIRC UCX2405 Rock Crawler



IMPORTANT NOTICE

The package or instruction manual contains important information and must be retained.

Our company's products are improving all the time, design and specifications are subject to change without notice. All the information in this manual has been carefully checked to ensure accuracy. If any printing errors, our company reserve the final interpretation right.

The spare parts (including batteries and chargers) mentioned in the User Manual are subject to sales. The KIT version does not include the electronic component.

THANK YOU

- Thank you for choosing this product. If you have any problems or need help, please call us and we will try our best to help you.
- This is a radio control model product, not a toy! which needs regular maintenance to obtain the best performance. If you don't do regular maintenance, it can affect performance. We have all the necessary parts and accessories to ensure that your vehicle maintains its best performance.
- The warning or attention symbol will alert you to potentially dangerous steps. Please read and understand the instructions carefully before proceeding.

WARNING

Failure to follow these instructions may result in injury to yourself or others. You may also cause property damage or model damage.

For more safety precautions, please refer to the “Disclaimer and Safety Operation Guidelines”.

Usage: Please follow the instructions to install and operate the model.

WARNING

Before Operation	<ul style="list-style-type: none">● Read the instruction manual in detail, or ask for a person with experience in operation, and read with the guardian if necessary.● Make sure all screws and nuts are properly tightened.● The remote control and the vehicle should always use a battery with sufficient power to avoid losing control of the model.● Please make sure that the throttle trigger is in the center position.
During Operation	<ul style="list-style-type: none">● First, turn on the power of the remote control, and then turn on the power of the model.● Use this product only in open areas (>5x5m) without pedestrians.● DO NOT put fingers or any objects inside rotating and moving parts.
After Operation	<ul style="list-style-type: none">● First, turn off the model's power, then turn off the remote control's power. And take out the battery.● Daily maintenance is required after the model is used.

Warning:

The product should only be used by adults and children over 14 years. Adult supervision is required for children under 14 years.

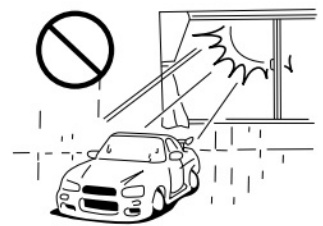
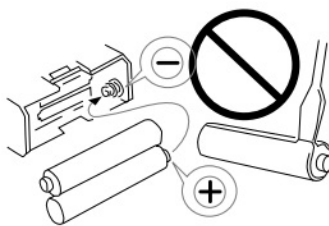
ATTENTION

- The model must stop immediately and check for the reasons when it is operating abnormally.
- Keep in mind that people around you may also operate a radio-controlled model.
- The motor is a heating part, please do not touch it.
- If you don't use the model for a long time, please raise the chassis to let the wheels hang in the air.

Please use this product only in empty place! It is strictly forbidden to use it on roads, living area, parks, indoor areas, children or places where people gather; otherwise, injury may occur.



- The product contains small and sharp parts. Keep away from children.
- Be sure to read the instruction manual in detail, or ask for a person with experience in operation, and read with the guardian if necessary.
- DO NOT operate in public streets or crowded places to avoid accidents.



- Cutters, nippers and screw drivers need careful handling.
- Please don't reverse the contact or disassemble the battery, as this will cause the battery to explode.
- DO NOT put the model in high temperatures, humidity or direct sunlight.

BATTERY SAFETY

- Please read and observe all precautions before use. Improper use of the battery may cause danger.
- It is normal for the battery to heat up after operation. Please be careful when handling

the battery. If the wire is worn, it is easy to short-circuit and cause fire.

- Wasted Li-ion battery must not be placed with household trash. Please contact local environmental or waste agency or the supplier of your model or your nearest Li-ion battery recycling center.

1. After use, please disconnect the power supply and pull out the plug.
2. Remove the battery from the model before charging.
3. DO NOT charge the battery when it is bulging or expanding;
4. Keep away from damp, corrosive environments and heat sources;
5. Please charge the battery under adult supervision.
6. Pay attention to the polarity of the battery when installing or replacing the battery.
7. Different types of batteries or old and new batteries, should not be mixed.
8. DO NOT short-circuit any terminals.
9. DO NOT short circuit, decompose or put the battery into fire;
10. Please use the attached special charger to charge the battery.



Li-Po Battery Disposal & Recycling



Wasted Lithium-Polymer batteries must not be placed with household trash.

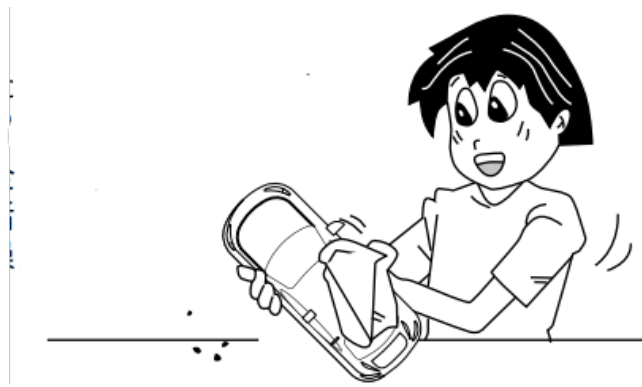
Please contact the local environmental or waste agency or the supplier of your model or your nearest Li-Po battery recycling center.

PRODUCT MAINTENANCE

When not in use, remove the battery from the model and transmitter.



Please remove the sediment and dirt on the car completely and keep kept dry after play.



Apply lubricating oil to external metal parts.



Please separate the car and battery when not in use.



FCC Note

This equipment has been tested and found to comply with the limits for a Class B digital device, pursuant to Part 15 of the FCC Rules. These limits are designed to provide reasonable protection against harmful interference in a residential installation. This equipment generates uses and can radiate radio frequency energy and, if not installed and used in accordance with the instructions, may cause harmful interference to radio communications. However, there is no guarantee that interference will not occur in a particular installation. If this equipment does cause harmful interference to radio or television reception, which can be determined by turning the equipment off and on, the

user is encouraged to try to correct the interference by one or more of the following measures:

- Reorient or relocate the receiving antenna.
- Increase the separation between the equipment and receiver.
- Connect the equipment into an outlet on a circuit different from that to which the receiver is connected.

WARNING: Changes or modifications not expressly approved by the party responsible for compliance could void the user’s authority to operate the equipment.

FCC Notice

The equipment may generate or use radio frequency energy. Changes or modifications to this equipment may cause harmful interference unless the modifications are expressly approved in the instruction manual. Modifications not authorized by the manufacturer may void the user’s authority to operate this device.

This device complies with Part 15 of the FCC Rules.

Operation is subject to the following two conditions:

1. This device may not cause harmful interference.
2. This device must accept any interference received, including interference that may cause undesired operation.

FCC Radiation Exposure Statement

The device has been evaluated to meet the general RF exposure requirements. The device can be used in portable exposure conditions without restriction.

TROUBLESHOOTING

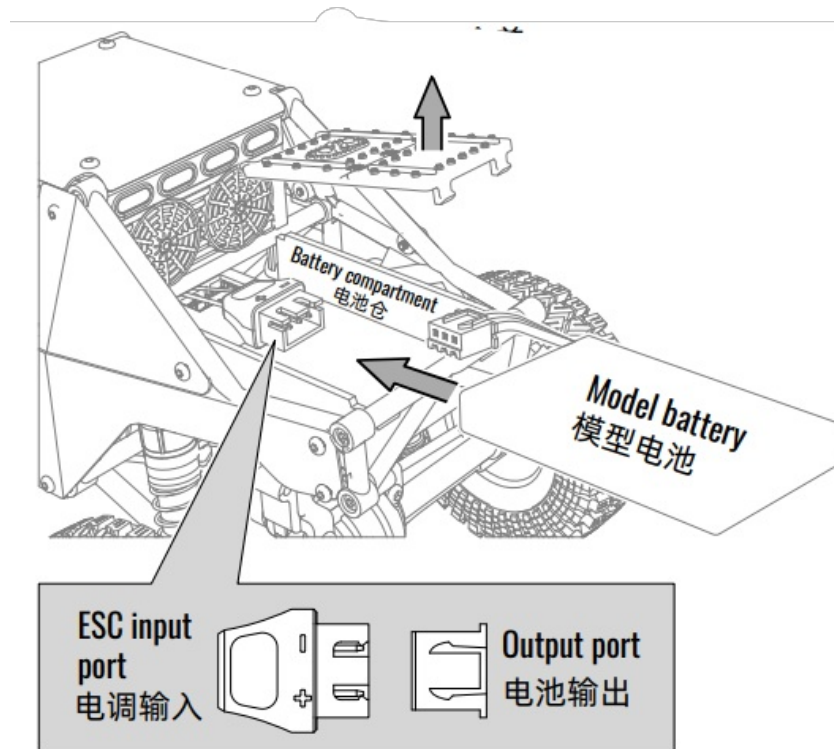
Cause	Solution
Long frequency matching time	The signal is disturbed, restart the car and the transmitter.
Operation delay	Please make sure there are no obstacles or interferences.

The indicator of the transmitter is not bright	Please make sure the battery is installed correctly or replace it with a new one.	
	If the transmitter doesn't work, please replace it with a new one.	
The steering of the model car has no force or function	Increase the percentage of steering.	
	Please make sure the steering is it includes the sundries or some parts are damaged.	
The model car cannot shift gears	Replacement of the new shift servo	
	The shift tension spring falls off or is damaged	
	Parts inside the central transmission are damaged	
	The transmitter is faulty or damaged	
The vehicle moves forward (backward) automatically or makes a sound of “en..... “		Restart the transmitter
The remote control car doesn't work	When the battery is low, charge it in time or replace it with a new battery.	
	Please make sure the wheel or drive shaft is not entangled by debris and remove it.	
	The motor may have reached the expiration date; replace it with the same motor.	
	Please keep the car within effective control distance.	
	When the battery of the transmitter is low battery, please replace it in time.	
	Check whether all parts of the model car are damaged and replace them.	

High temperature protection is triggered when the ESC's temperature is too high, Please pause for 10 minutes before using.

ASSEMBLY OF MODEL BATTERY

Remove the battery compartment cover

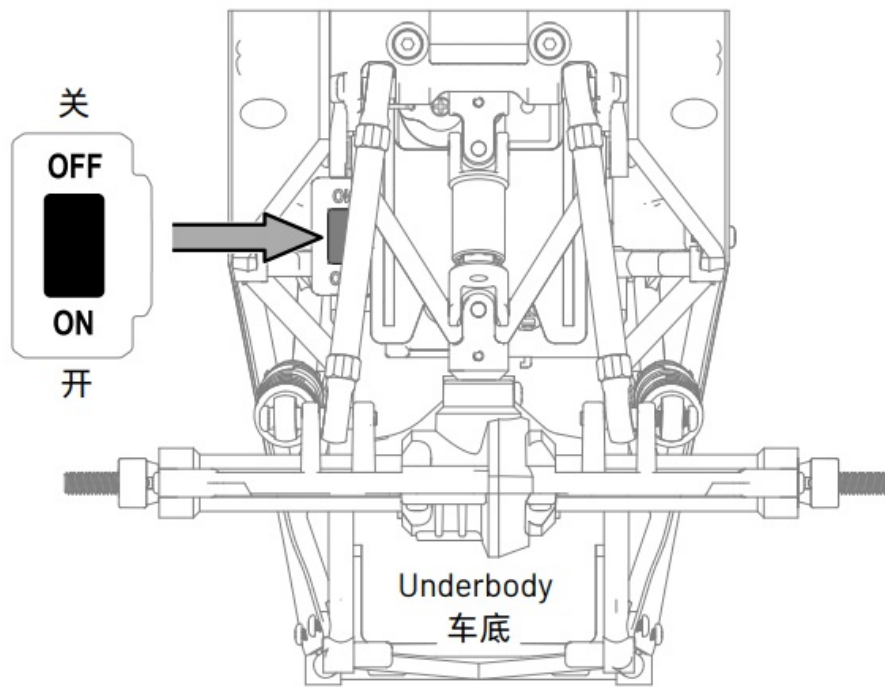


Put the battery into the battery compartment and connect to the ESC.

Reset the compartment cover.

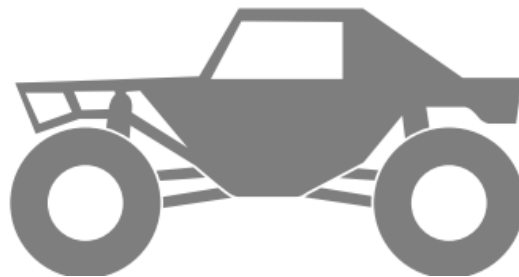
Take out the battery when not in use; otherwise, the battery is easily damaged.

FREQUENCY MATCHING



1. Power on the transmitter, will sound “di”, and the indicator light flashes.
2. Turn on the car power. The lights are flashing to enter the frequency state.

The transmitter and the car will carry out automatic frequency matching. When the indicator light of the transmitter and the car lights are always on, the frequency matching is successful.

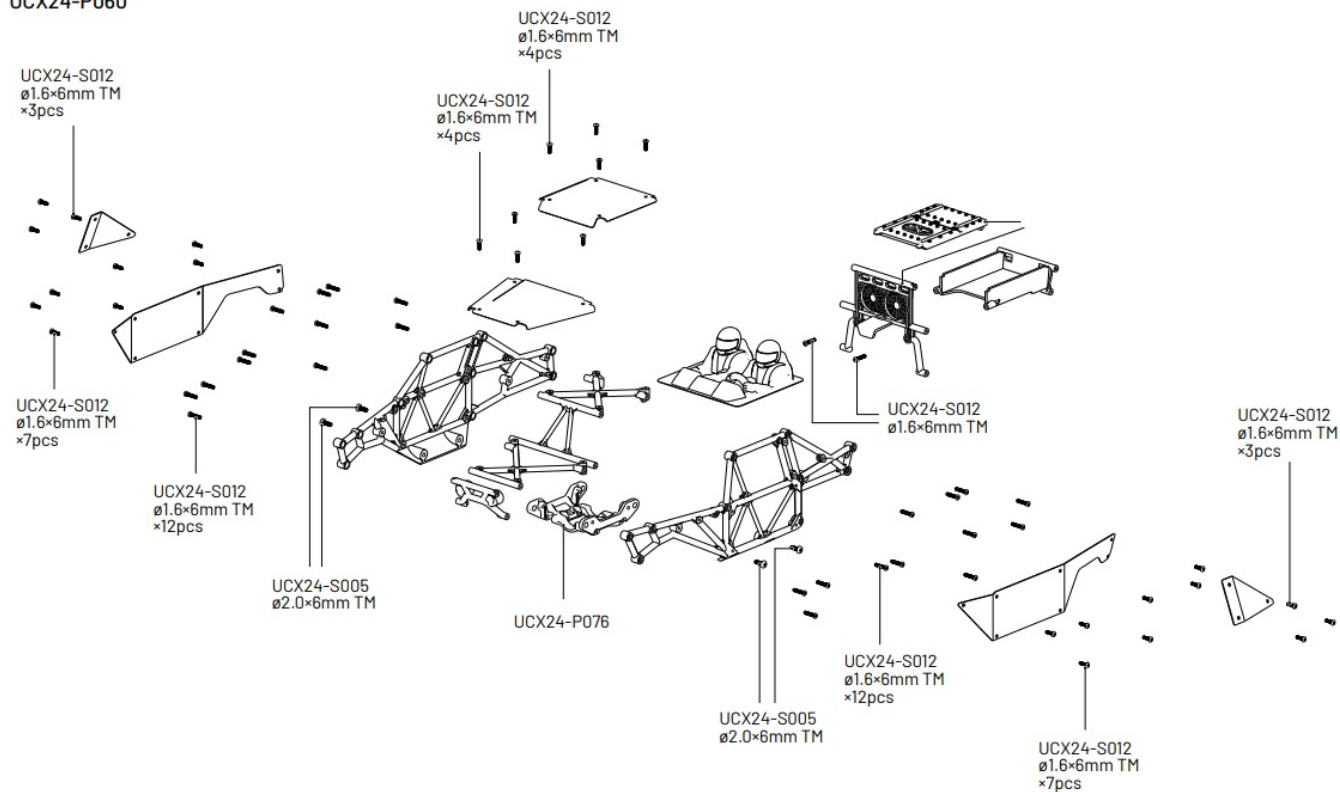


Placed on Horizontal ground

Body Assembly

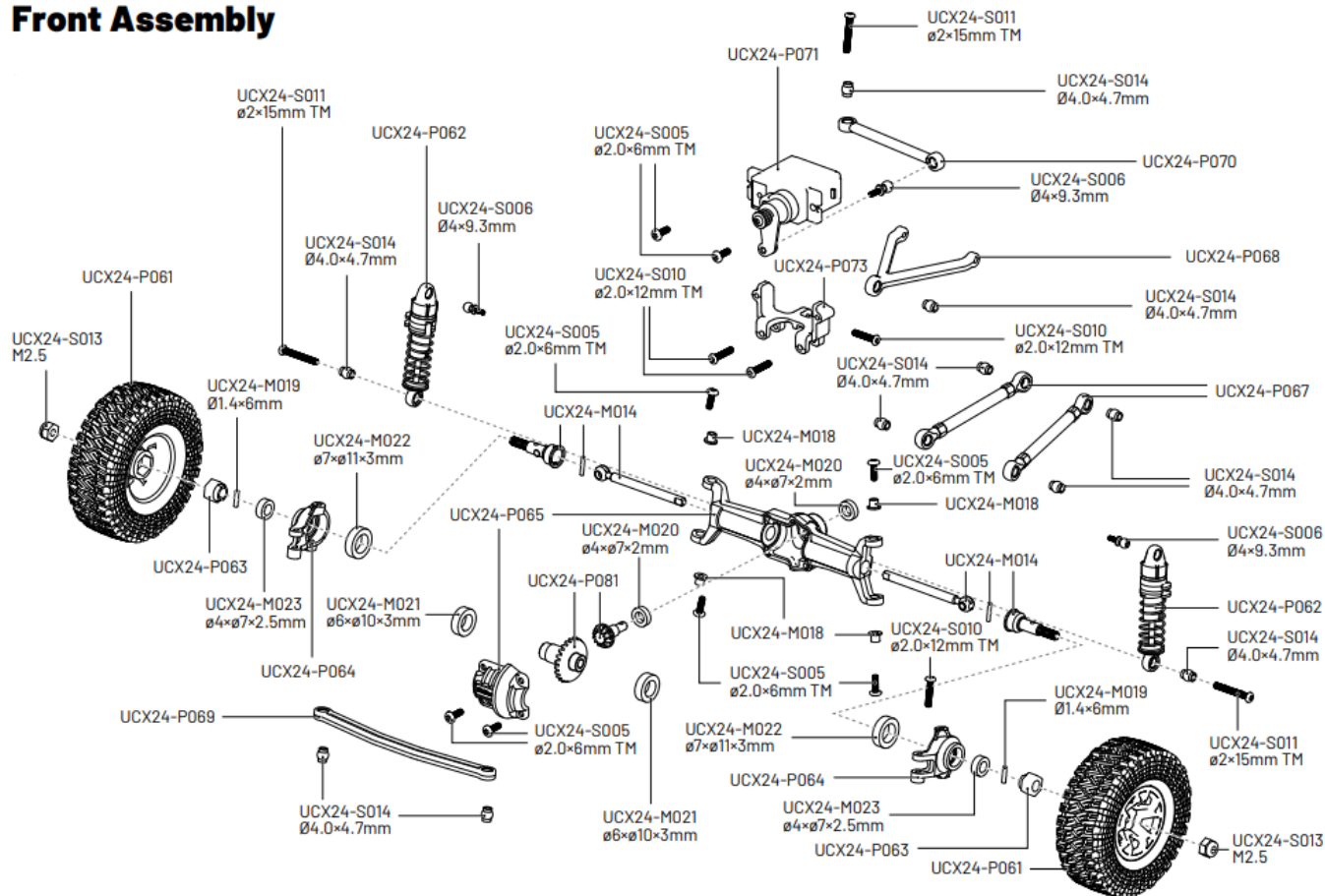
UCX24-P060

UCX24-P060

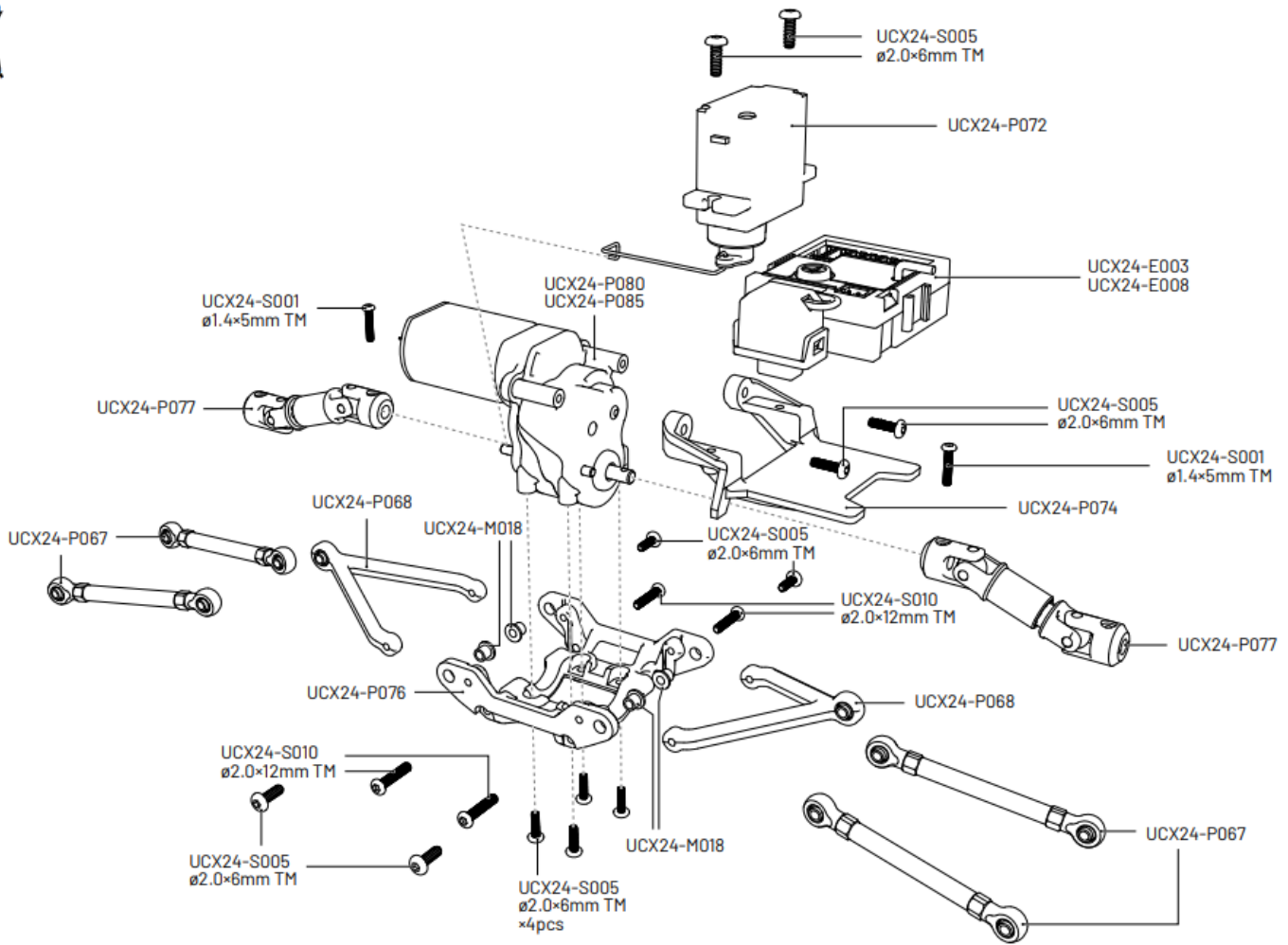


Front Assembly

Front Assembly

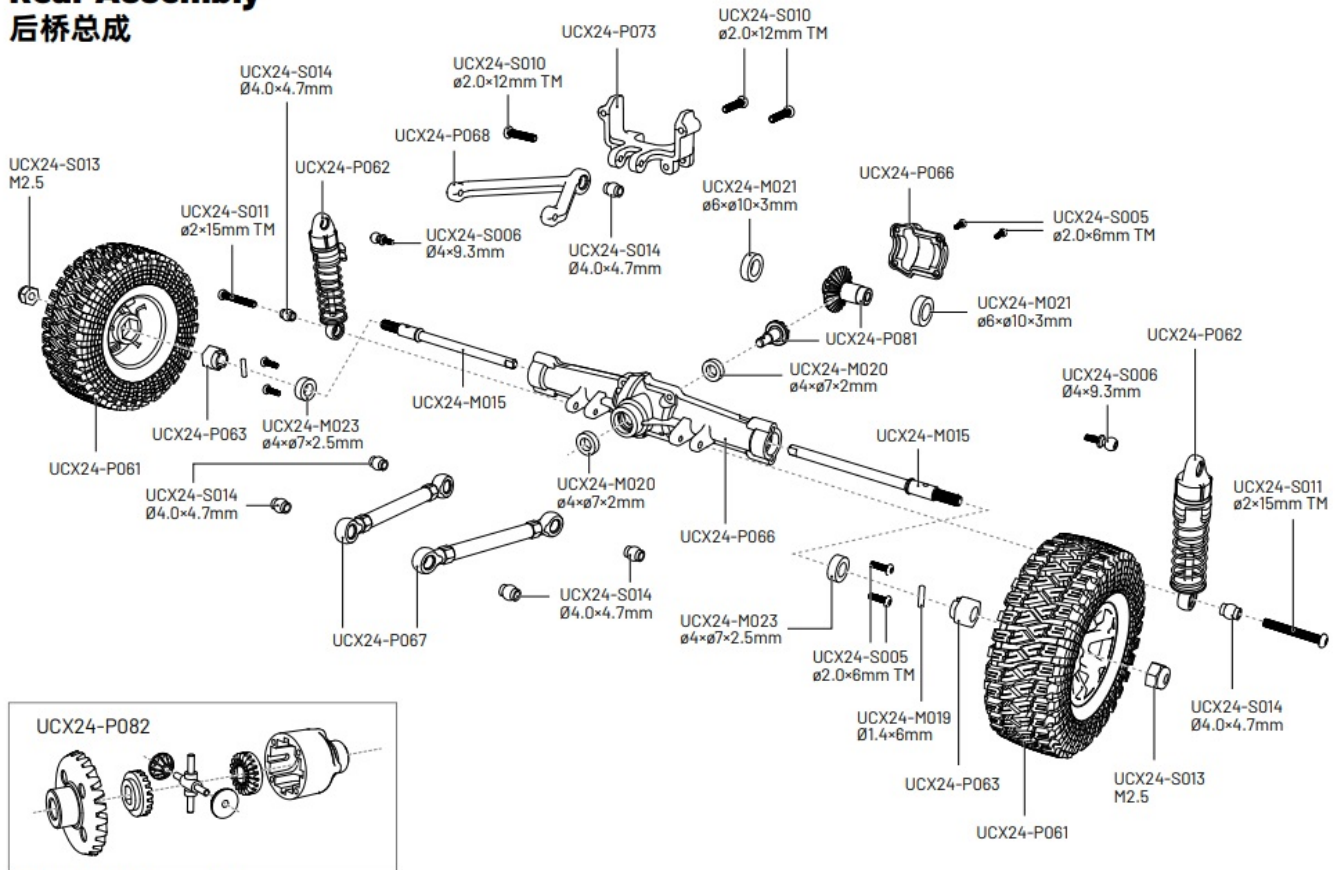


Central transmission assembly



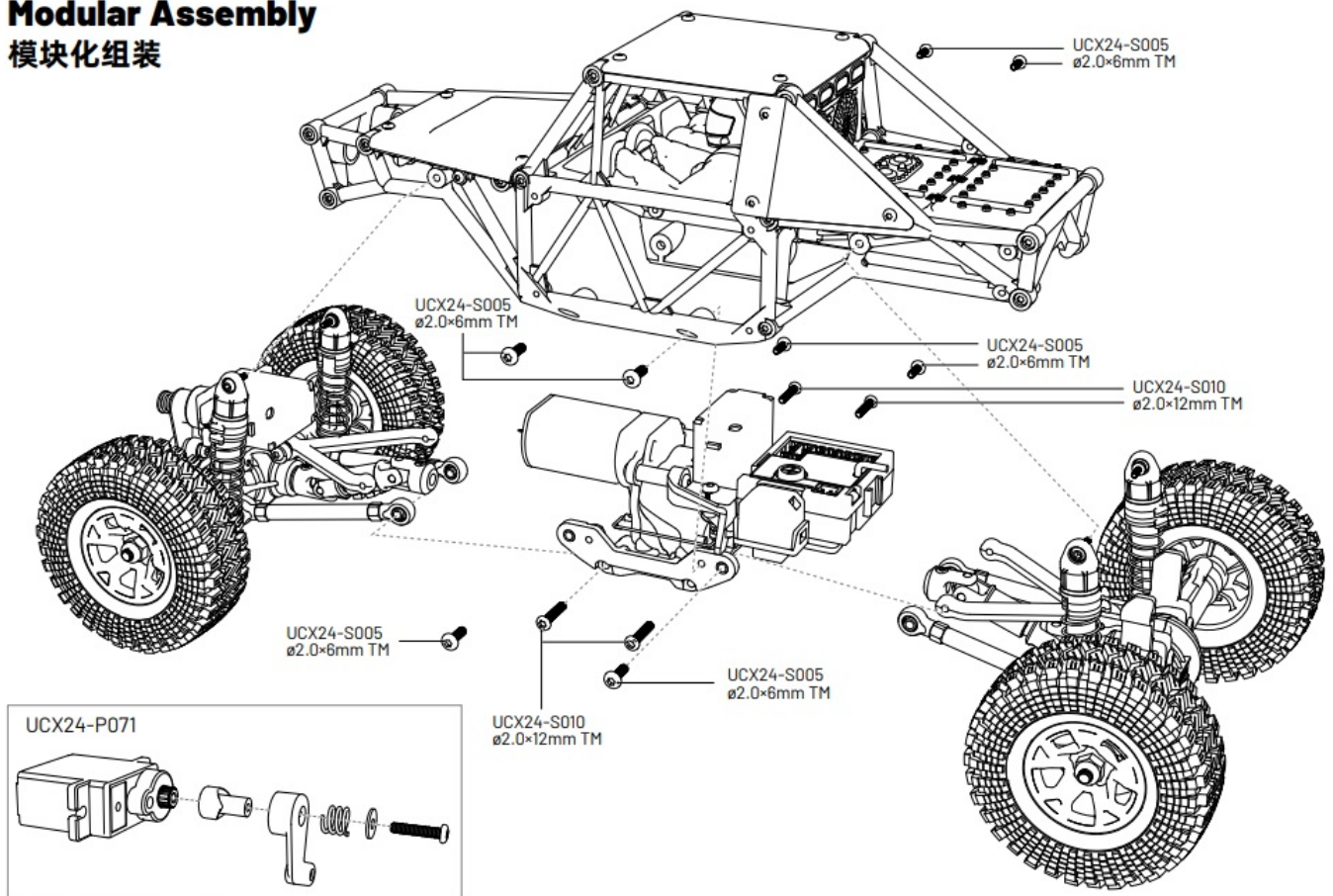
Rear Assembly

Rear Assembly 后桥总成



Modular Assembly

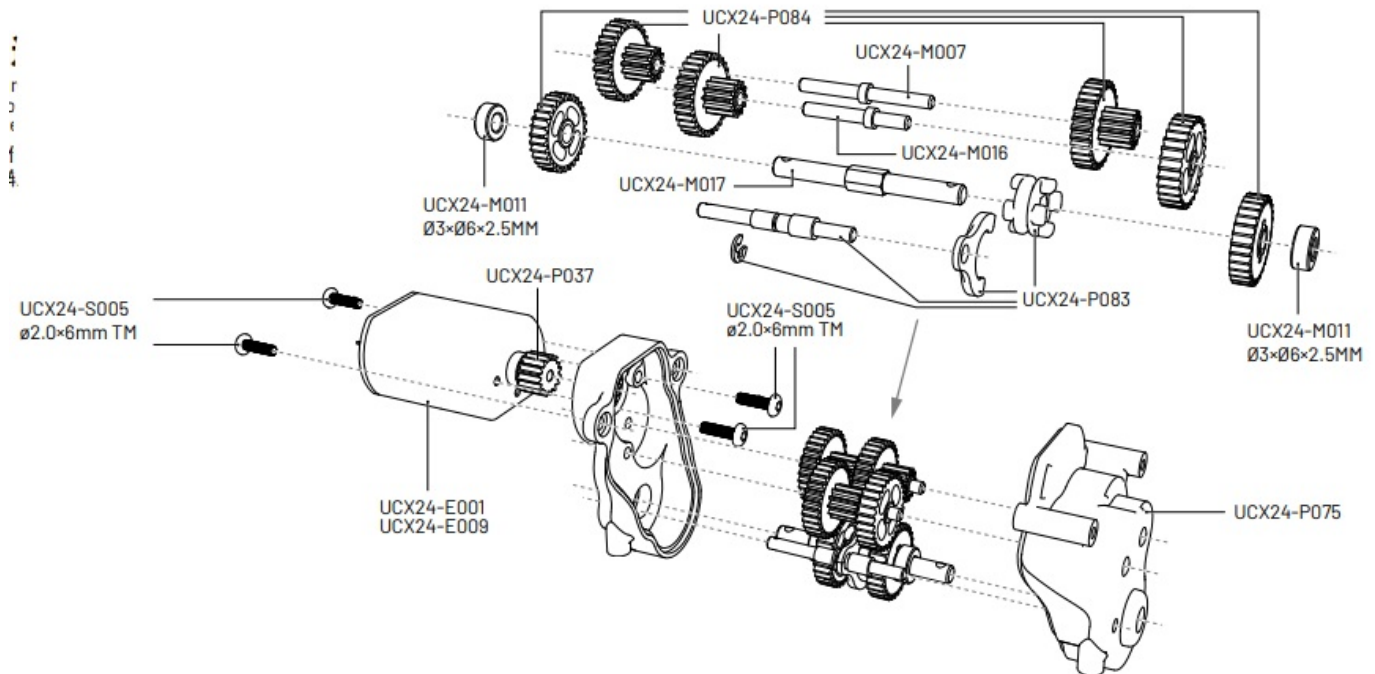
Modular Assembly 模块化组装



Motor/change gear set

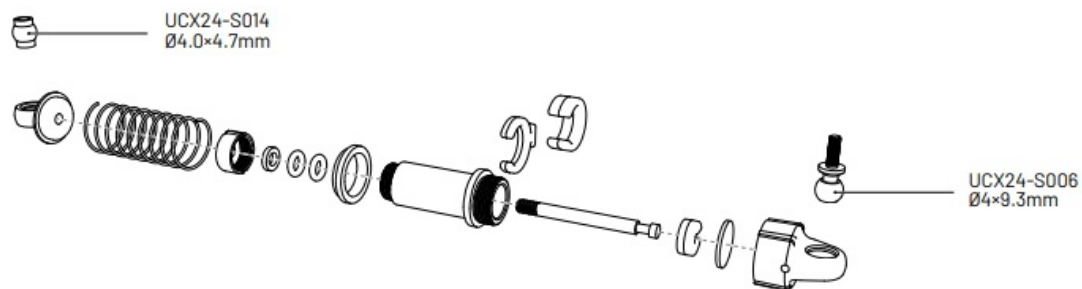
The motor teeth must mesh with the main transmission gear; otherwise, it is easy to damage the gear.

UCX24-P080



Shock absorber

UCX24-P062



BUYABLE ACCESSORIES

Part Name

- UCX24-P037 Motor gear (Metal)
- UCX24-P060 Body assembly
- UCX24-P061 Wheel
- UCX24-P062 Shock absorber

- UCX24-P063 Wheel adapters
- UCX24-P064 Steering hub set
- UCX24-P065 Front axle
- UCX24-P066 Rear axle
- UCX24-P067 Front/Rear axle rod
- UCX24-P068 Y shape linkage
- UCX24-P069 Steering linkage
- UCX24-P070 Servo linkage
- UCX24-P071 Steering servo
- UCX24-P072 Variable speed servo
- UCX24-P073 Servo support
- UCX24-P074 Support plate
- UCX24-P075 Differential housing
- UCX24-P076 Gearbox support
- UCX24-P077 Center driveshaft
- UCX24-P078 Front axle assembly
- UCX24-P079 Rear axle assembly
- UCX24-P080 Central transmission assembly (Brushled)
- UCX24-P081 Axle shift teeth (Metal)
- UCX24-P082 Differential assembly (Metal)
- UCX24-P083 Shift lever
- UCX24-P084 Shift gear set
- UCX24-P085 Central transmission assembly (Brushless)
- UCX24-P087 Front axle steering assembly
- UCX24-E001 Carbon brush motor
- UCX24-E003 Speed control & Receiver (Brushled)
- UCX24-E004 Model battery
- UCX24-E005 Charger
- UCX24-E007 Transmitter
- UCX24-E008 Speed control & Receiver (Brushless)
- UCX24-E009 Brushless motor
- UCX24-M007 Main gear shaft ($\varnothing 3 \times \varnothing 2 \times 22\text{mm}$)
- UCX24-M011 Ball bearing ($\varnothing 3 \times \varnothing 6 \times 2.5\text{mm}$)
- UCX24-M014 Front axle CVD driveshaft


- UCX24-M015 Rear axle half shaft
- UCX24-M016 Transmission gear shaft (ø3×ø2×17mm)
- UCX24-M017 Gear spindle (ø2.98×3.4×31.2mm)
- UCX24-M018 Steering washers
- UCX24-M019 Pin (Ø1.4×6mm)
- UCX24-M020 Ball bearing (ø4×ø7×2mm)
- UCX24-M021 Ball bearing (ø6×ø10×3mm)
- UCX24-M022 Ball bearing (ø7×ø11×3mm)
- UCX24-M023 Ball bearing (ø4×ø7×2.5mm)
- UCX24-S001 Hexagon socket button head machine screw (ø1.4×5mm TM)
- UCX24-S005 Hexagon socket button head machine screw (ø2.0×6mm TM)
- UCX24-S006 Hollow ball screw (Ø4×9.3mm)
- UCX24-S010 Hexagon socket button head machine screw (ø2.0×12mm TM)
- UCX24-S011 Hexagon socket button head machine screw (ø2.0×15mm TM)
- UCX24-S012 Hexagon socket button head machine screw (ø1.6×6mm TM)
- UCX24-S013 M2.5 Hex flanged nylon lock nut
- UCX24-S014 Hollow ball (Ø4.0×4.7mm)



Manufacturer: SHANTOU CITY UDIRC TECHNOLOGY CO., LTD

Address: Guangfeng Industrial Zone, Guangyi Street, Chenghai District, Shantou City, Guangdong Province, CN

Documents / Resources

	<p>udirc UCX2405 Rock Crawler [pdf] Instruction Manual</p> <p>UCX2405, UCX2405 Rock Crawler, UCX2405, Rock Crawler, Crawler</p>
---	---

References

- [User Manual](#)

🔍 Crawler, Rock Crawler, UCX2405, UCX2405 Rock Crawler,

📁 Udirc Udirc

Leave a comment

Your email address will not be published. Required fields are marked *

Comment *

Name

Email

Website

☐ Save my name, email, and website in this browser for the next time I comment.

Post Comment

Search:

Search

[Manuals+](#) | [Upload](#) | [Deep Search](#) | [Privacy Policy](#) | [@manuals.plus](#) | [YouTube](#)

This website is an independent publication and is neither affiliated with nor endorsed by any of the trademark owners. The "Bluetooth®" word mark and logos are registered trademarks owned by Bluetooth SIG, Inc. The "Wi-Fi®" word mark and logos are registered trademarks owned by the Wi-Fi Alliance. Any use of these marks on this website does not imply any affiliation with or endorsement.