

Ubiquiti Connect Display



Ubiquiti Connect Display Installation Guide

[Home](#) » [UBIQUITI](#) » Ubiquiti Connect Display Installation Guide 

Contents

- [1 Ubiquiti Connect Display](#)
- [2 Product Information](#)
- [3 Product Usage Instructions](#)
- [4 Frequently Asked Questions](#)
- [5 What's In The Box](#)
- [6 Dimension](#)
- [7 Tools And Hardware](#)
- [8 Assembly Instruction](#)
- [9 Connections With Device](#)
- [10 Using Instructions](#)
- [11 Documents / Resources](#)
 - [11.1 References](#)



Ubiquiti Connect Display



Product Information

- **Model:** Connect Display
- **Manufacturer:** UI
- **Link to Installation Guide:** [Click here](#)

Product Usage Instructions

- **Step 1: Unboxing**
Carefully unbox the Connect Display and ensure all components are included.
- **Step 2: Installation**
Follow the detailed installation guide provided at the link above to correctly install the Connect Display.
- **Step 3: Setup**
Connect the display to your device as per the guide and power it on. Follow any on-screen prompts for initial setup.
- **Step 4: Configuration**
Adjust display settings such as brightness, contrast, and resolution according to your preferences.
- **Step 5: Enjoyment**
Your Connect Display is now ready for use. Enjoy using it for work, entertainment, or any other purposes.

Frequently Asked Questions

Q: Is the Connect Display compatible with Mac computers?

A: Yes, the Connect Display is compatible with Mac computers. Please ensure you have the correct connection cables.

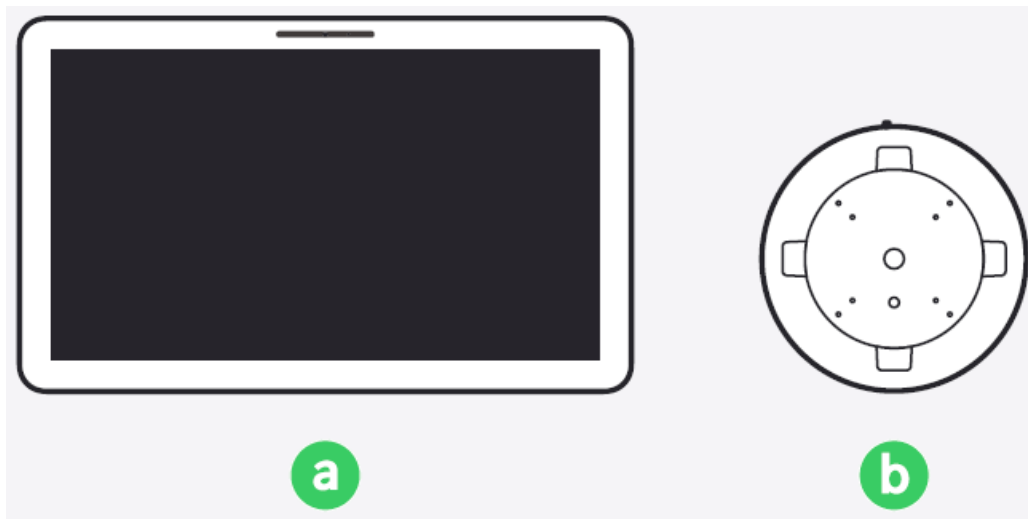
Q: Can I mount the Connect Display on the wall?

A: Yes, the Connect Display is wall-mountable. Refer to the installation guide for instructions on wall-mounting.

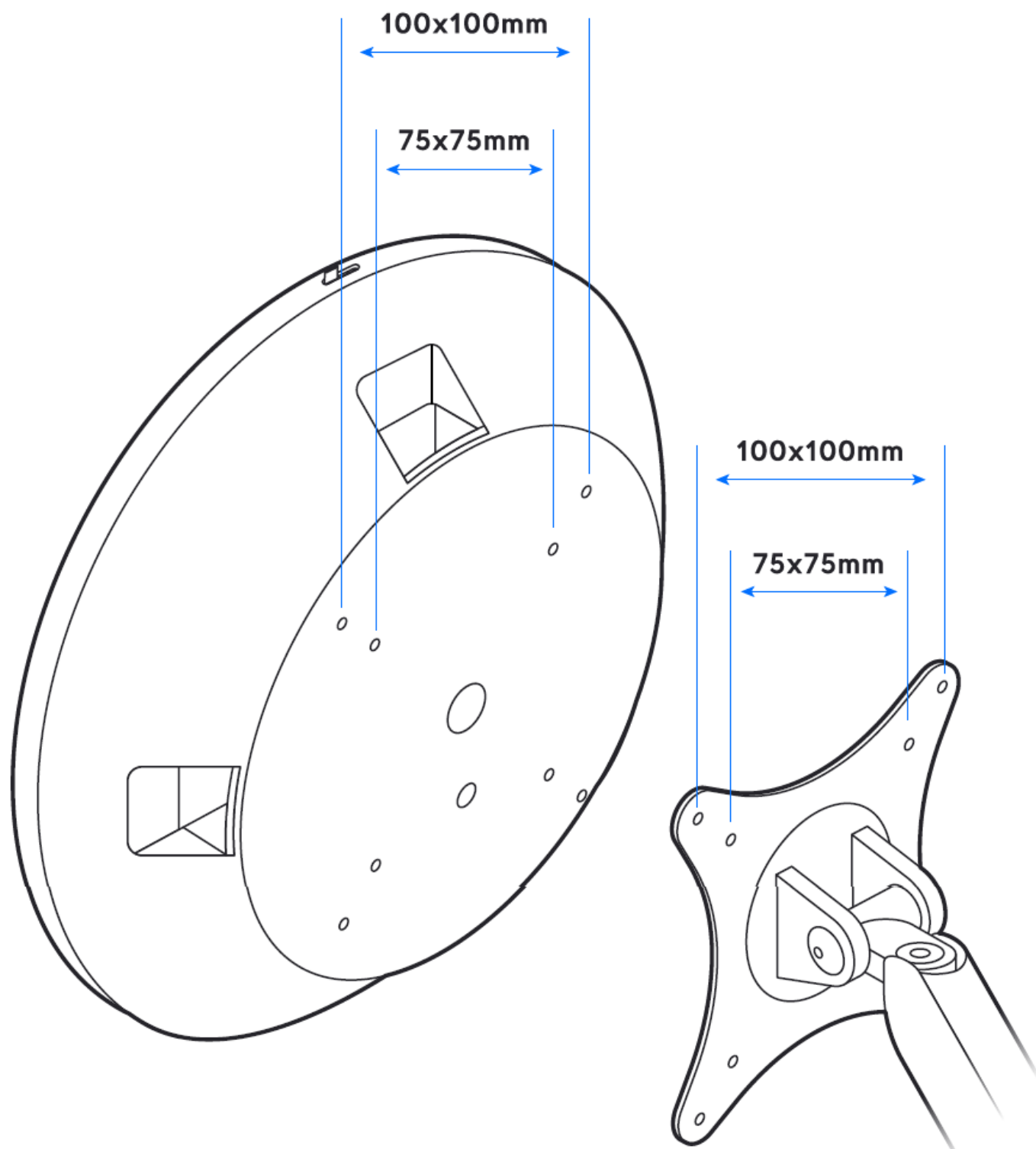
Q: How do I update the firmware of the Connect Display?

A: Firmware updates can be done by visiting the manufacturer's website and following the provided instructions.

What's In The Box

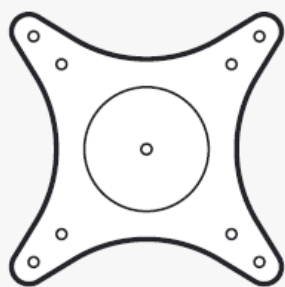


Dimension



Tools And Hardware

**VESA Mount
(75x75 or 100x100mm)**



1

M4



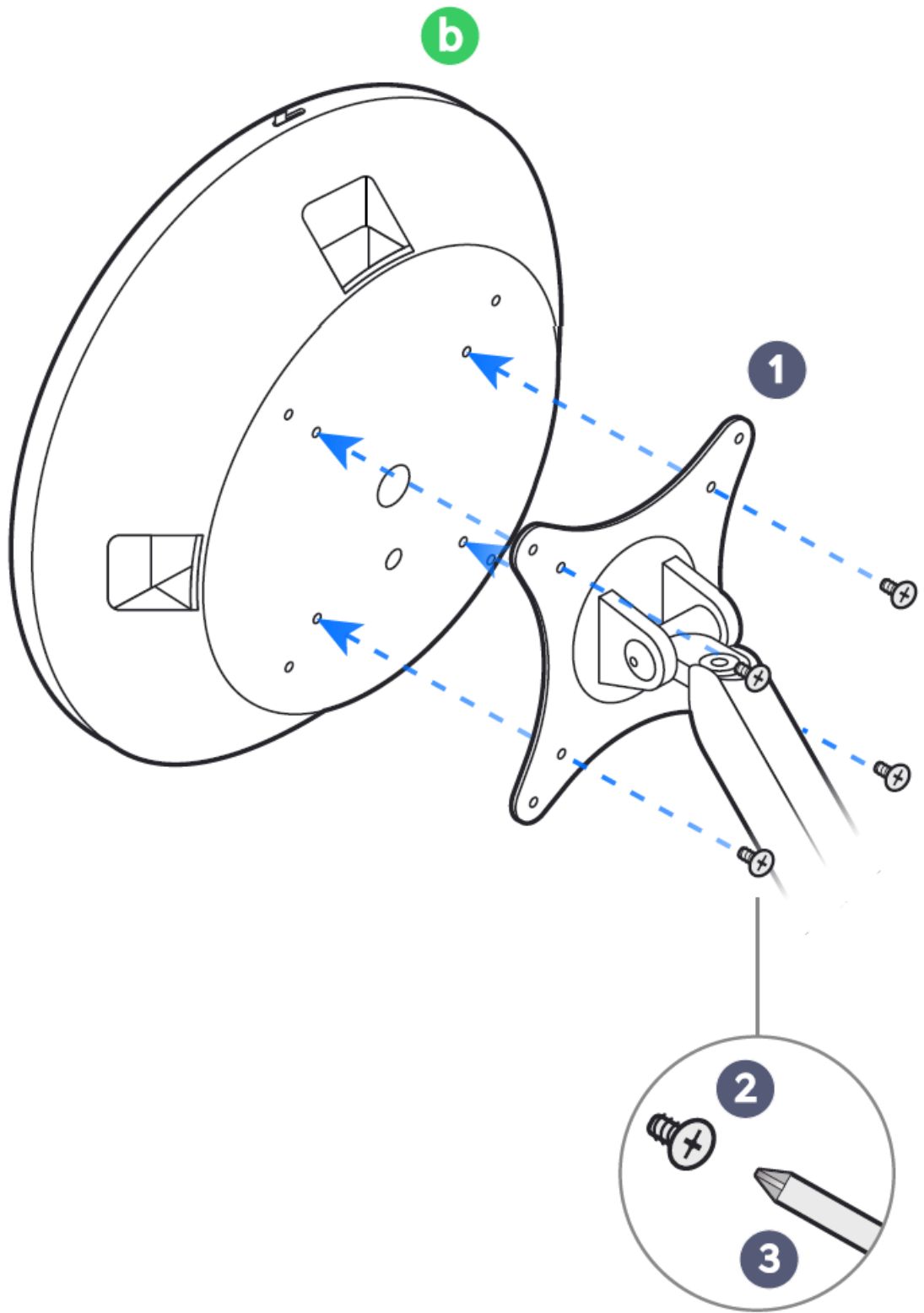
2



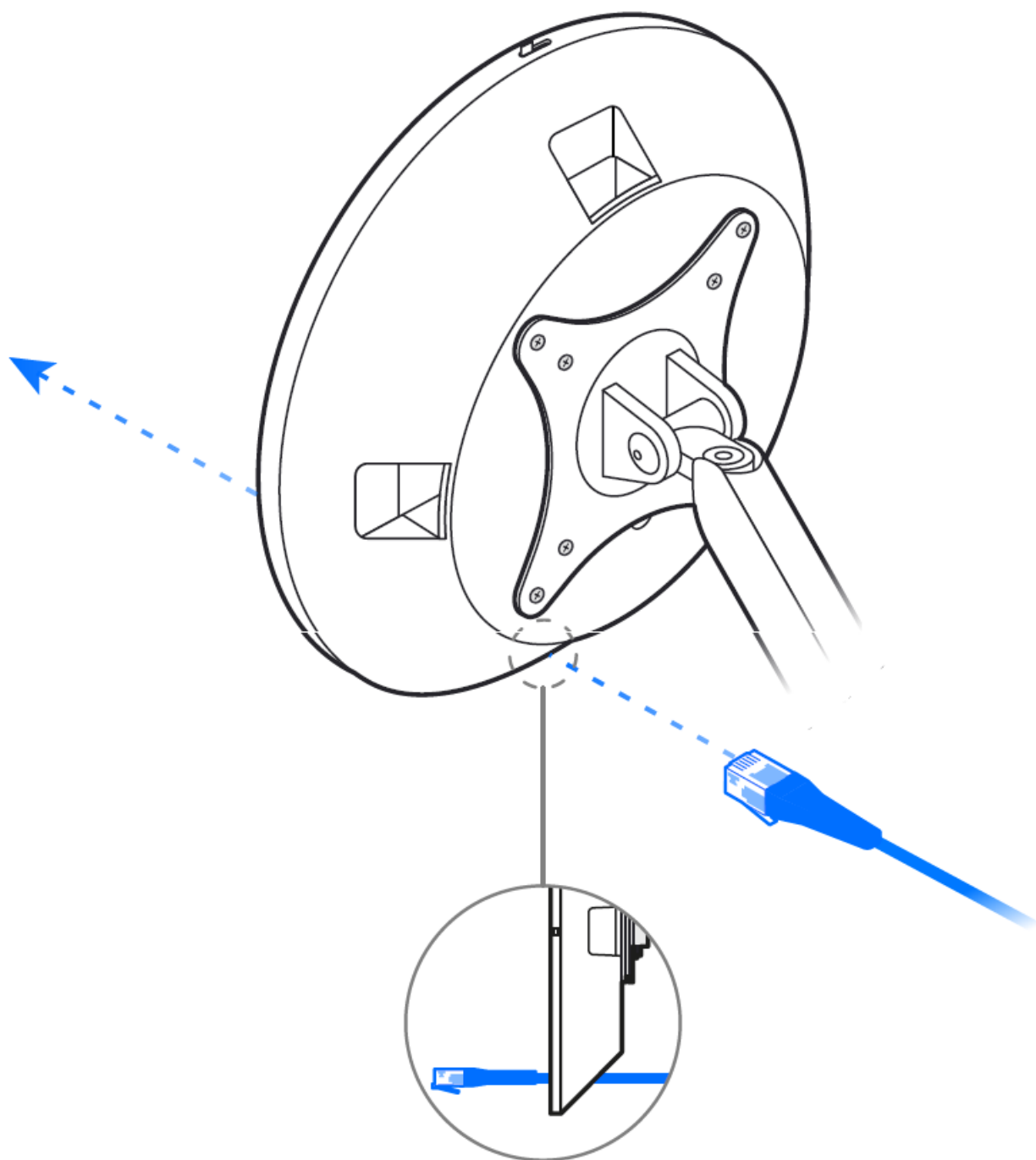
3

Assembly Instruction

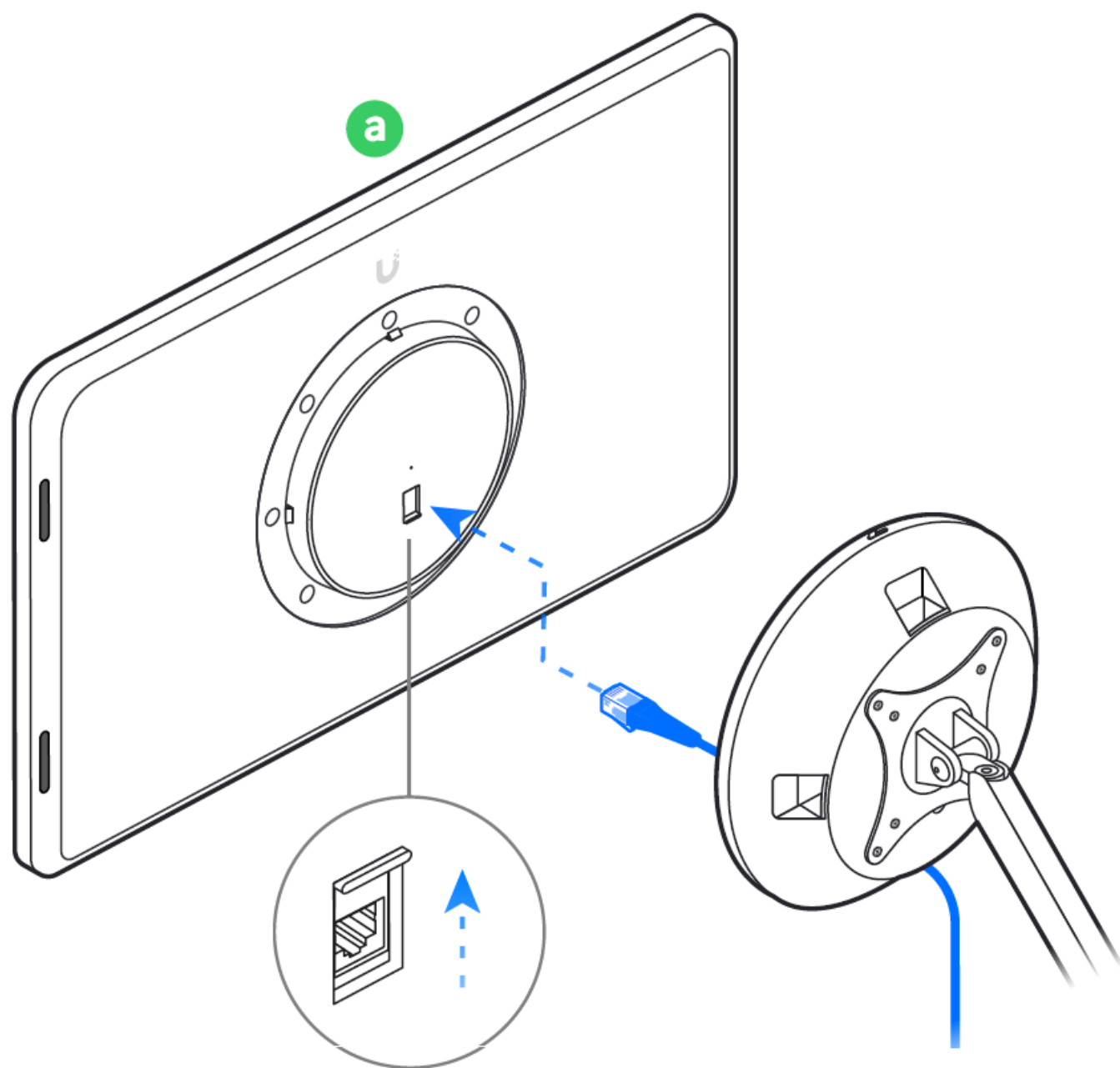
1



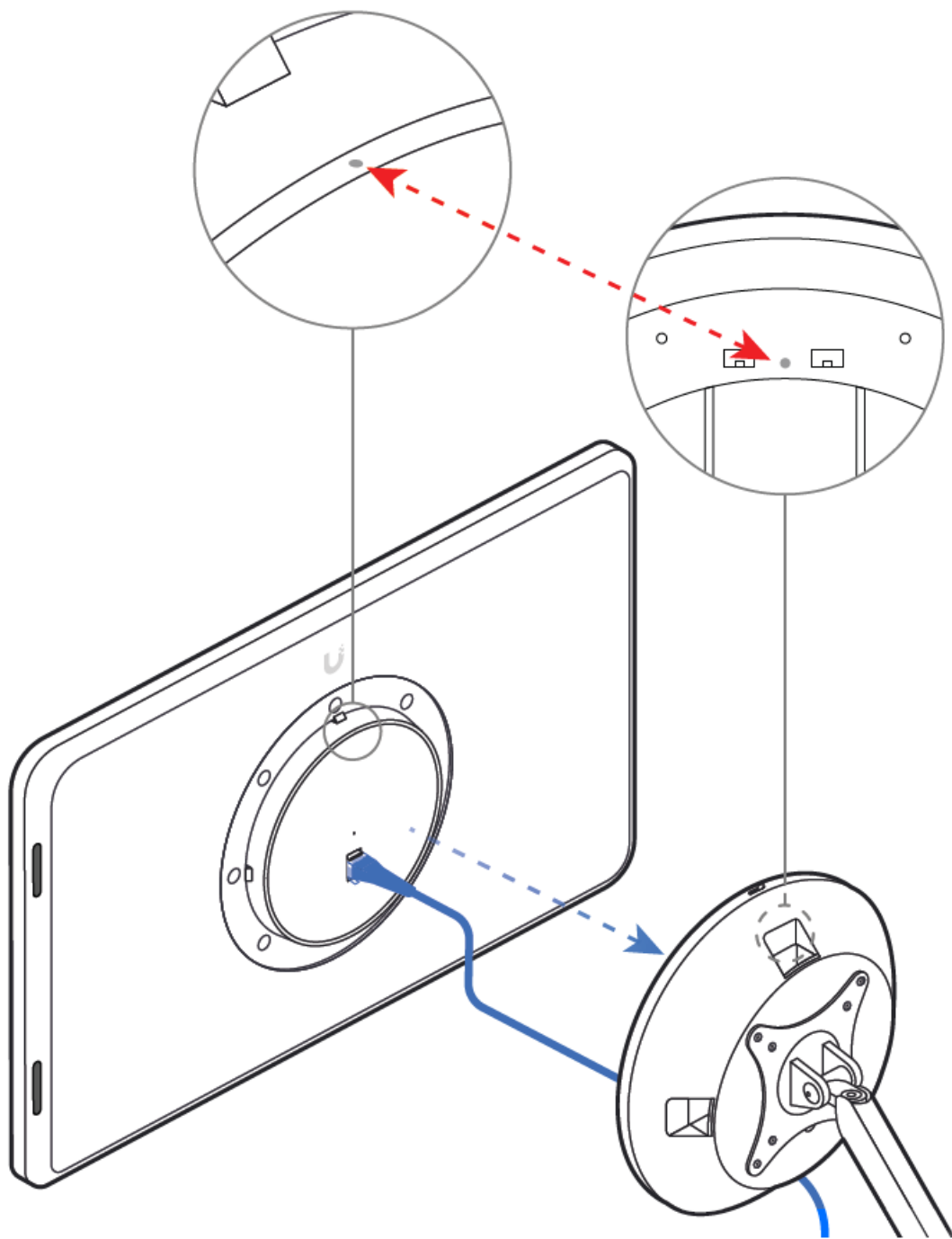
2



3



4



Connections With Device

5





Internet



UniFi Gateway
Console



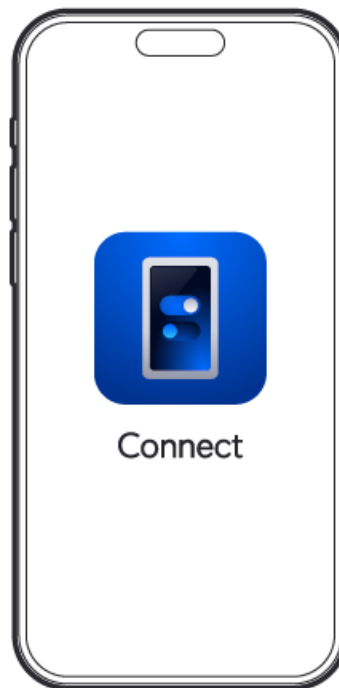
Switch



PoE++



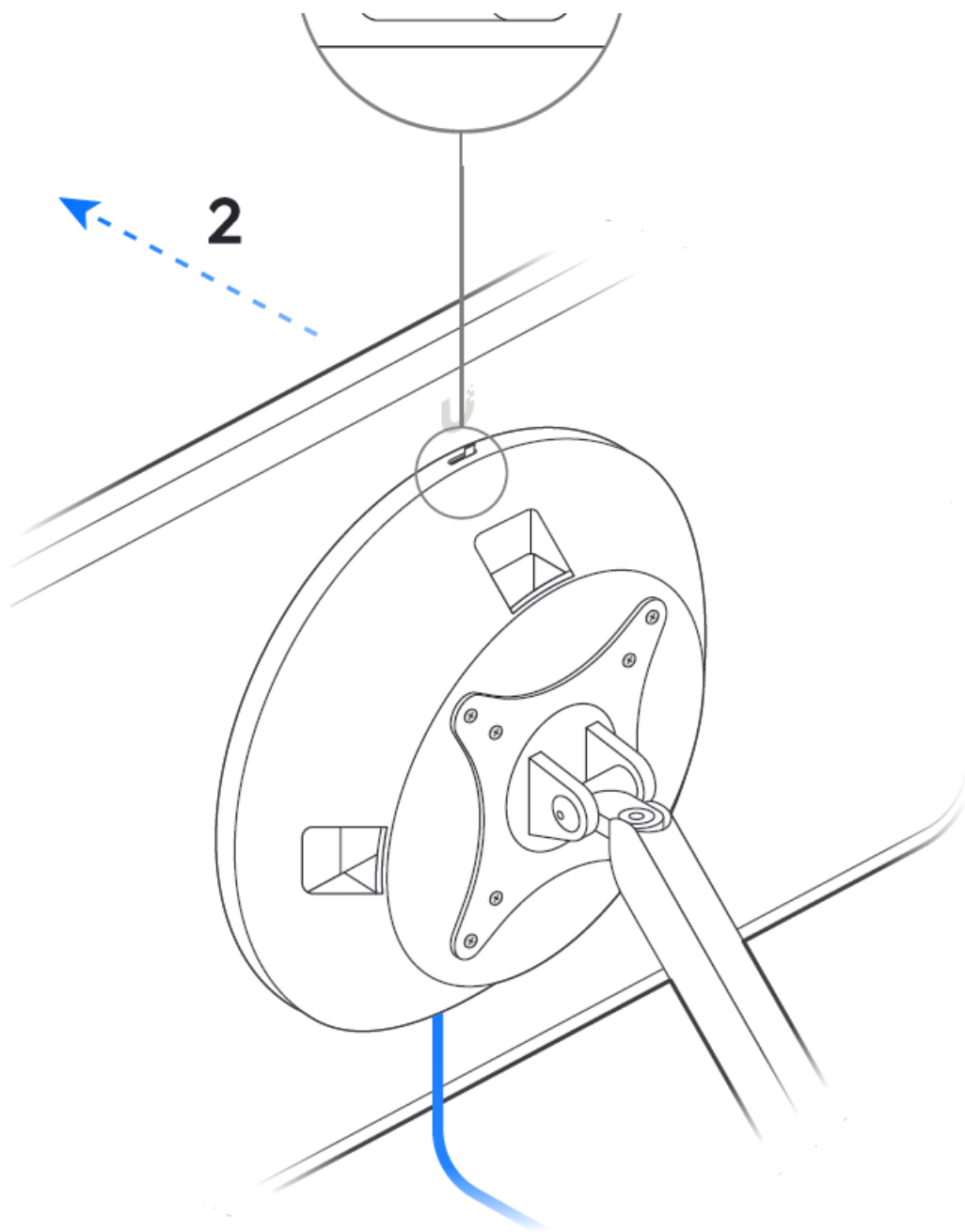
6



Using Instructions

1 





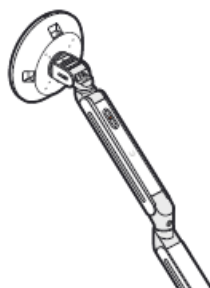
Display Table Stand

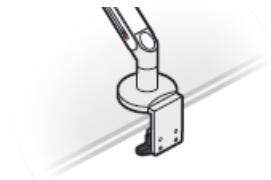
[Buy >](#)



Display Arm Mount

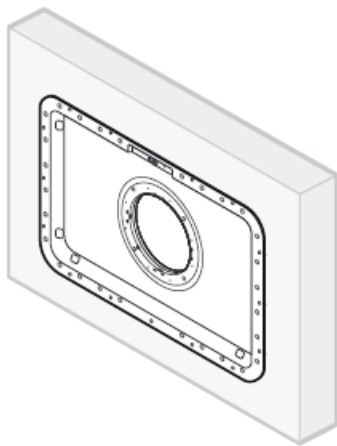
[Buy >](#)





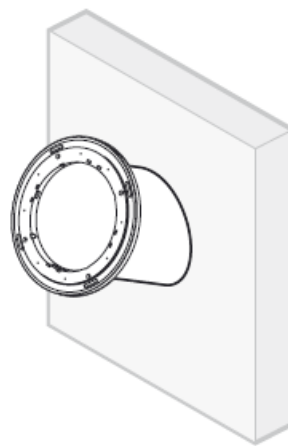
Display Flush Mount

[Buy >](#)



Display Surface Mount

[Buy >](#)



If you need further assistance, visit our [Help Center](#) or contact [Ubiquiti Support](#).

2022 Ubiquiti Inc. All rights reserved. Ubiquiti, Ubiquiti Networks, the Ubiquiti U logo, UniFi, and UniFi Connect are trademarks or registered trademarks of Ubiquiti Inc. in the United States and other countries. All other trademarks are the property of their respective owners. <https://dl.ui.com/qig/uc-display/#index>.

Documents / Resources

	Ubiquiti Connect Display [pdf] Installation Guide Connect Display, Display
---	---

References

- [Ubiquiti Account](#)
- [Connect Display Installation Guide](#)

- [!\[\]\(2dc8cdc0c918df88cde61039ecf68682_img.jpg\) **UniFi Connect Display Arm Mount - Ubiquiti Store**](#)
- [!\[\]\(793119bf0d613bd9b598fb8668922511_img.jpg\) **UniFi Connect Display Flush Mount - Ubiquiti Store**](#)
- [!\[\]\(0a4819029e810ca9d2aba79260b63a4d_img.jpg\) **UniFi Connect Display Surface Mount - Ubiquiti Store**](#)
- [!\[\]\(5b78a2fafd05db5e14d20573d68ef9b3_img.jpg\) **UniFi Connect Display Table Stand - Ubiquiti Store**](#)
- [**User Manual**](#)

[Manuals+](#), [Privacy Policy](#)

This website is an independent publication and is neither affiliated with nor endorsed by any of the trademark owners. The "Bluetooth®" word mark and logos are registered trademarks owned by Bluetooth SIG, Inc. The "Wi-Fi®" word mark and logos are registered trademarks owned by the Wi-Fi Alliance. Any use of these marks on this website does not imply any affiliation with or endorsement.