



# UBIQUITI AI Theta Audio Plug and Play High Performance 2 Way Audio Module User Guide

[Home](#) » [UBIQUITI](#) » [UBIQUITI AI Theta Audio Plug and Play High Performance 2 Way Audio Module User Guide](#)



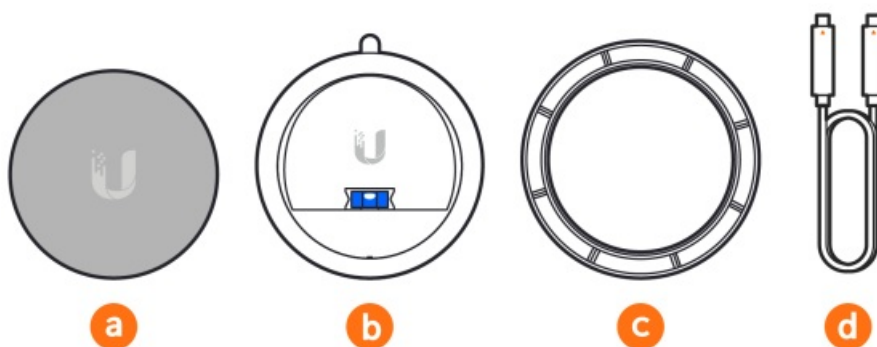
# UBIQUITI

AI Theta Audio  
Plug and Play High Performance  
2 Way Audio Module  
User Guide

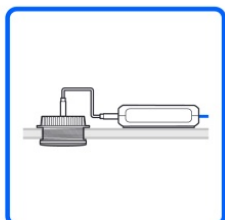
## Contents

- [1 AI Theta Audio Plug and Play High Performance 2 Way Audio Module](#)
- [2 Documents / Resources](#)
- [3 Related Posts](#)

## AI Theta Audio Plug and Play High Performance 2 Way Audio Module



**A**



Camera AI Theta  
[Buy >](#)

Ø57mm  
(Ø2 1/4")



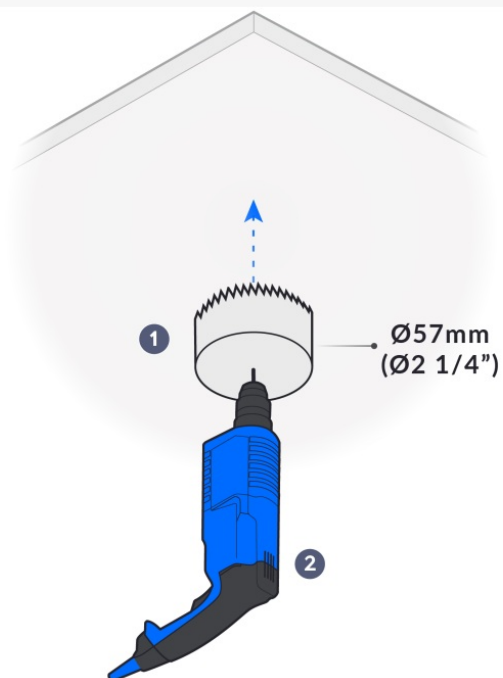
1



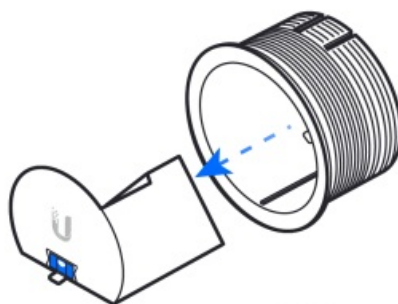
2



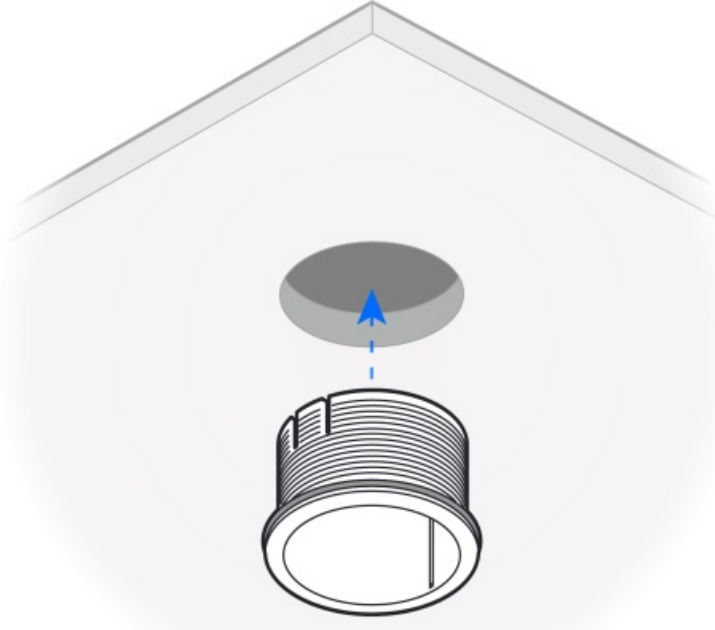
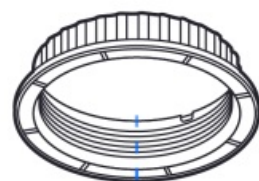
3

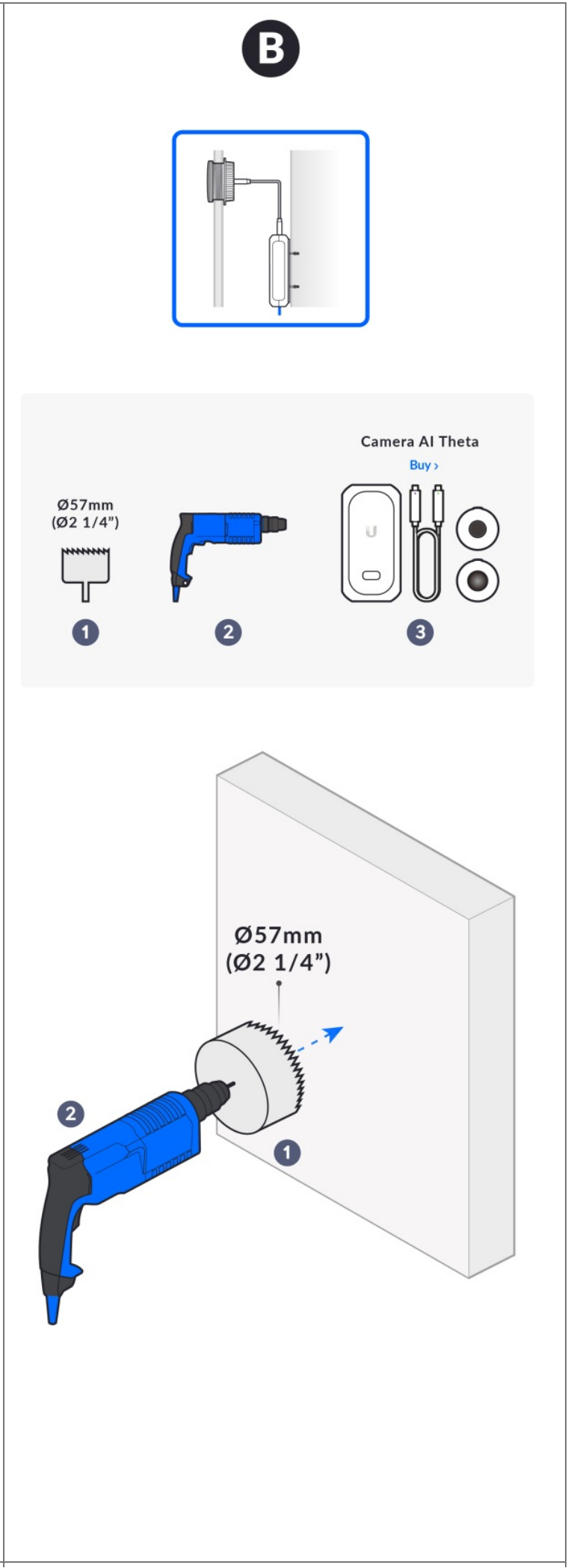
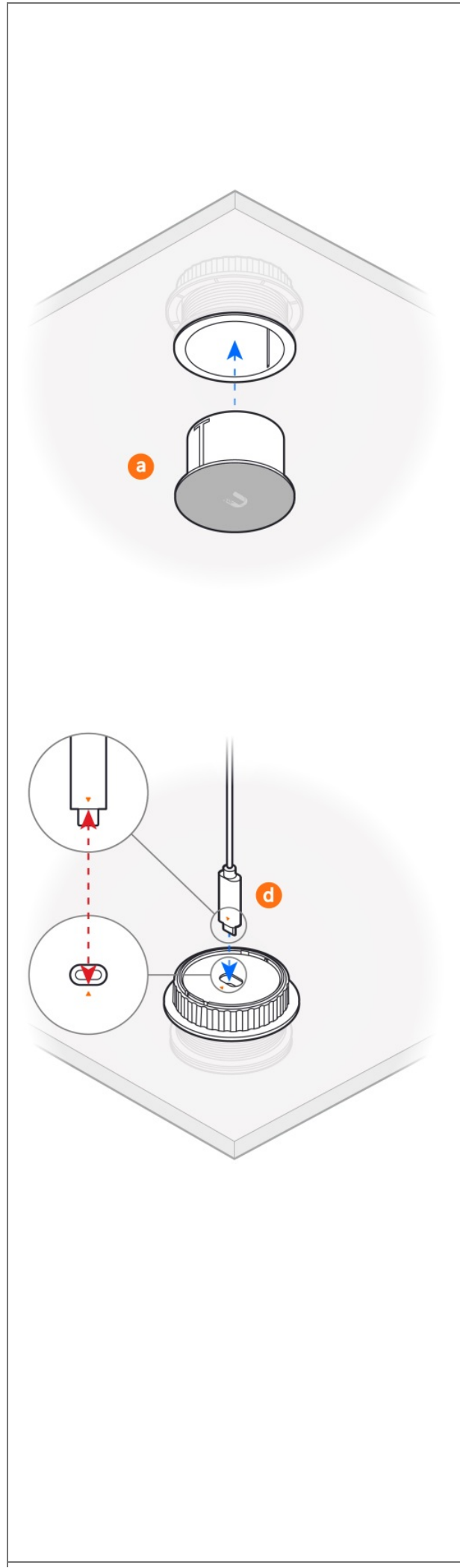


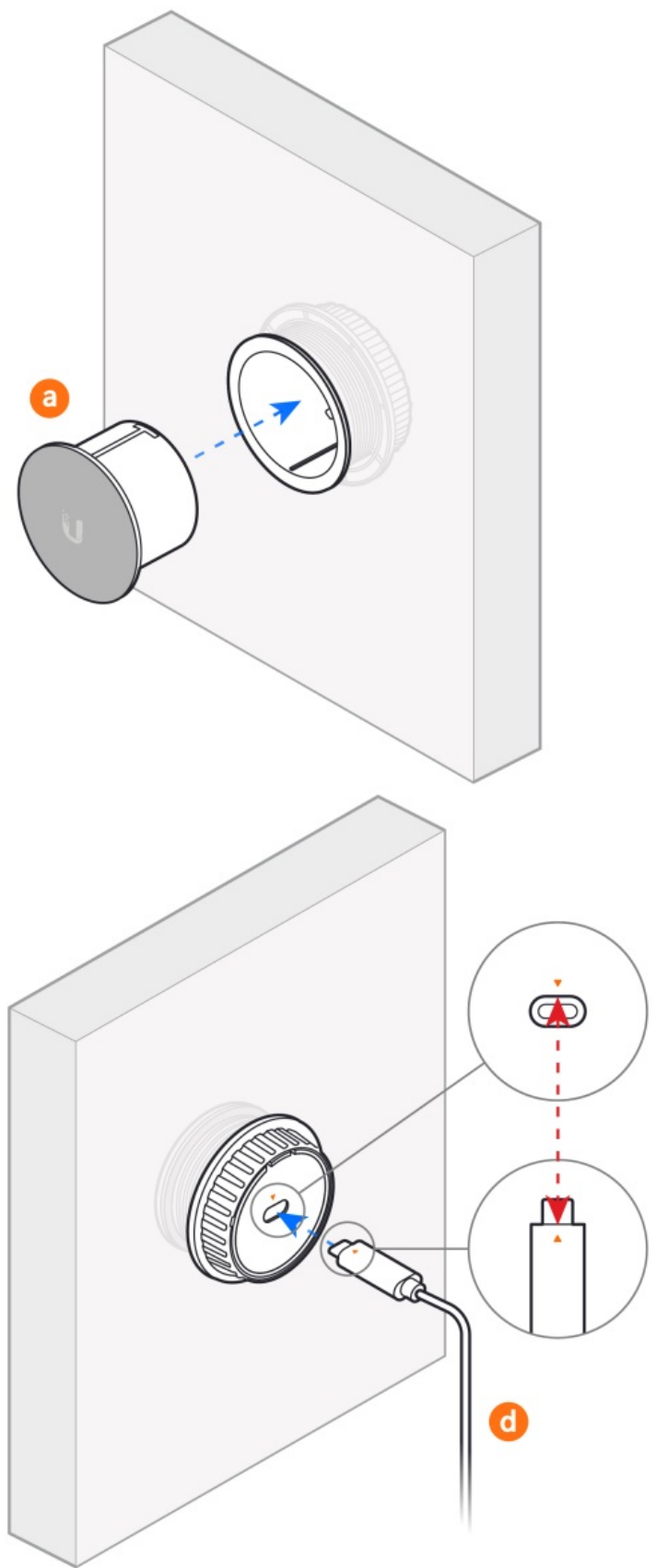
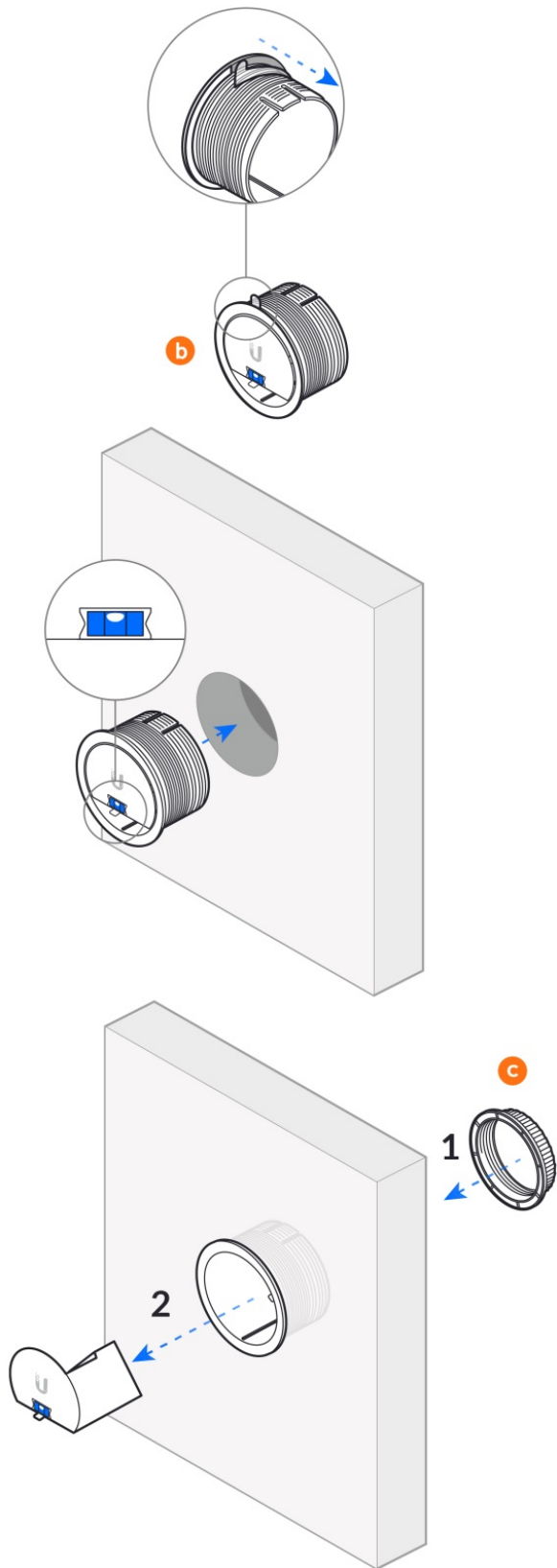
**b**

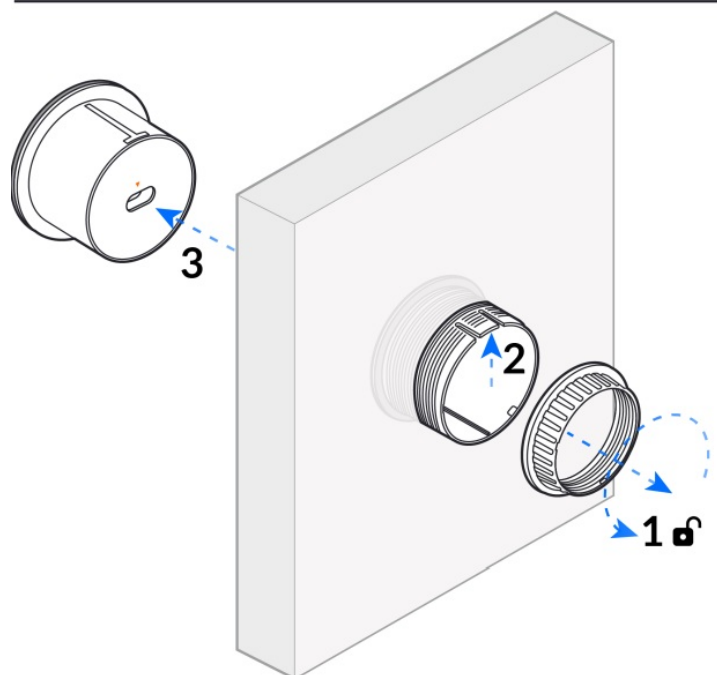


**c**











Internet



UniFi OS  
Console



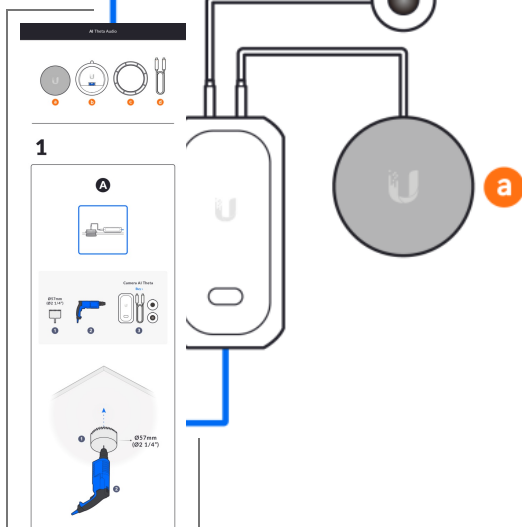
Switch



PoE



Docum



©2022  
Theta &  
Store a  
and the  
owners

quiti, Ubiquiti Networks, the Ubiquiti U logo, UniFi, UniFi Protect, and  
arks of Ubiquiti Inc. in the United States and in other countries. App  
of Apple Inc., registered in the U.S. and other countries. Google Play  
f Google LLC. All other trademarks are the property of their respective

Get Answers

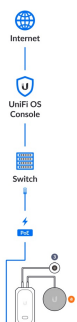
[help.ui.com](https://help.ui.com)

UI Support





2



[UBIQUITI AI Theta Audio Plug and Play High Performance 2 Way Audio Module](#) [pdf] User Guide  
 UVC-AI-Theta-Audio, AI Theta Audio Plug and Play High Performance 2 Way Audio Module, AI Theta Audio, Plug and Play High Performance 2 Way Audio Module

