

**Ubiquiti Networks AI Theta Hub**



## Ubiquiti Networks AI Theta Hub Installation Guide

[Home](#) » [UBIQUITI NETWORKS](#) » Ubiquiti Networks AI Theta Hub Installation Guide 

### Contents

- [1 Ubiquiti Networks AI Theta Hub](#)
- [2 Product Information](#)
- [3 Product Usage Instructions](#)
- [4 PARTS AND TOOLS](#)
- [5 INSTALLATION INSTRUCTIONS](#)
- [6 Documents / Resources](#)
  - [6.1 References](#)
- [7 Related Posts](#)

# Ubiquiti

**Ubiquiti Networks AI Theta Hub**



## Specifications

- **Model:** AI Theta Hub
- **Manufacturer:** UI
- **Link:** [AI Theta Hub Installation Guide](#)

## Product Information

The AI Theta Hub is a smart hub designed to enhance your AI-powered devices' connectivity and performance. It serves as a central control unit for managing various AI-enabled products within your smart home or office environment.

## Product Usage Instructions

### Unboxing and Setup

Upon unboxing the AI Theta Hub, ensure all components are included as per the packaging list. Connect the hub to a power source using the provided adapter.

## **Connectivity**

Follow the step-by-step guide in the installation manual to connect the AI Theta Hub to your existing AI devices and network. Ensure a stable internet connection for optimal performance.

## **Configuration**

Access the configuration settings of the AI Theta Hub through the provided interface or mobile app. Customize settings as per your preferences to tailor the hub's functionality to your needs.

## **Maintenance**

Regularly check for firmware updates for the AI Theta Hub to ensure it operates with the latest features and security patches. Keep the hub clean and free from dust for efficient functioning.

## **FAQ**

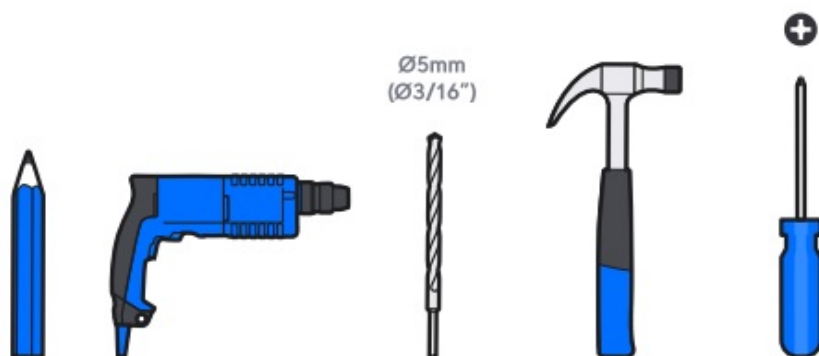
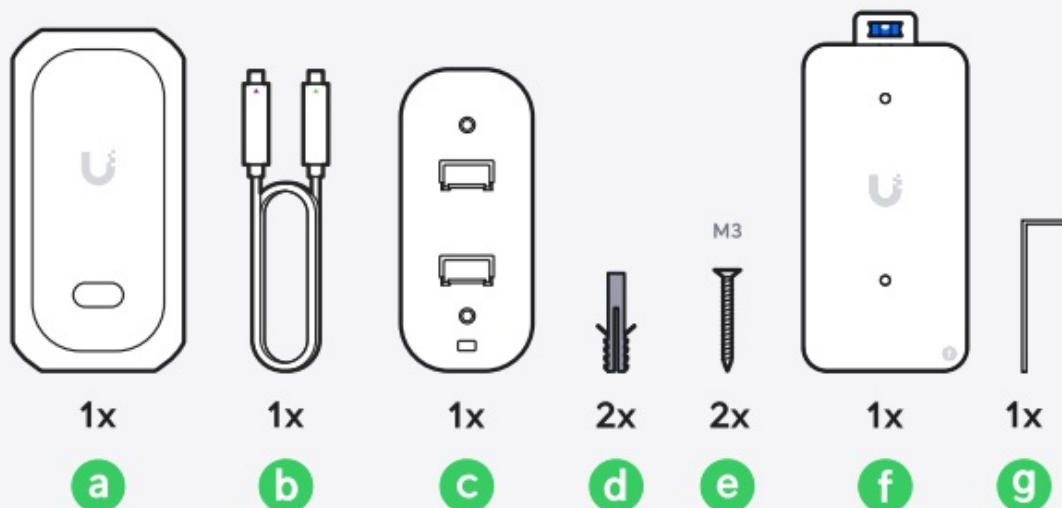
- **Q: How do I reset the AI Theta Hub?**

- **A:** To reset the AI Theta Hub, locate the reset button on the device and press it for 10 seconds until all lights blink simultaneously. The hub will then revert to its factory settings.

- **Q: Can I use the AI Theta Hub with non-AI devices?**

- **A:** The AI Theta Hub is optimized for use with AI-enabled devices; however, it may still function as a standard hub for non-AI products, albeit with limited functionality.

## **PARTS AND TOOLS**



AI Theta Pro  
360 Lens

[Buy >](#)



AI Theta Pro  
Long Distance Lens

[Buy >](#)



AI Theta Pro  
Wide Angle Lens

[Buy >](#)



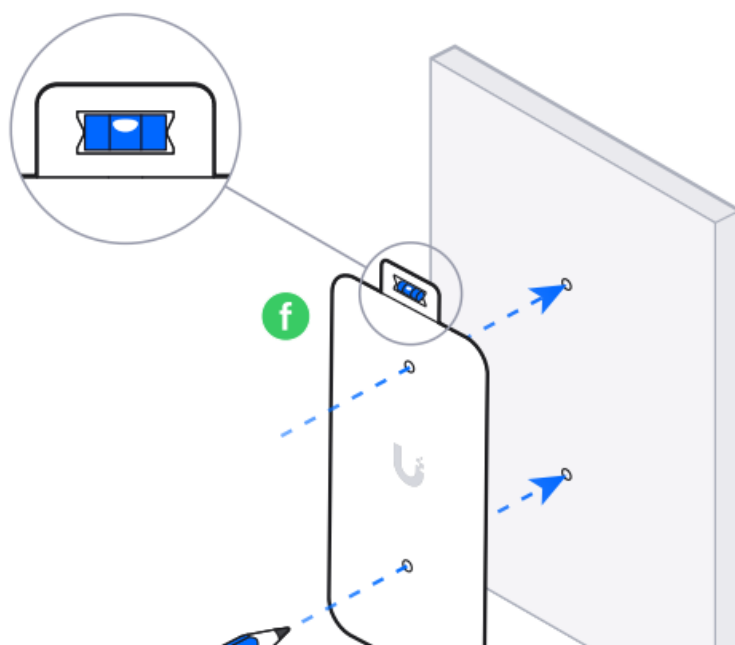
## INSTALLATION INSTRUCTIONS

# 1



1x

f



1x

c



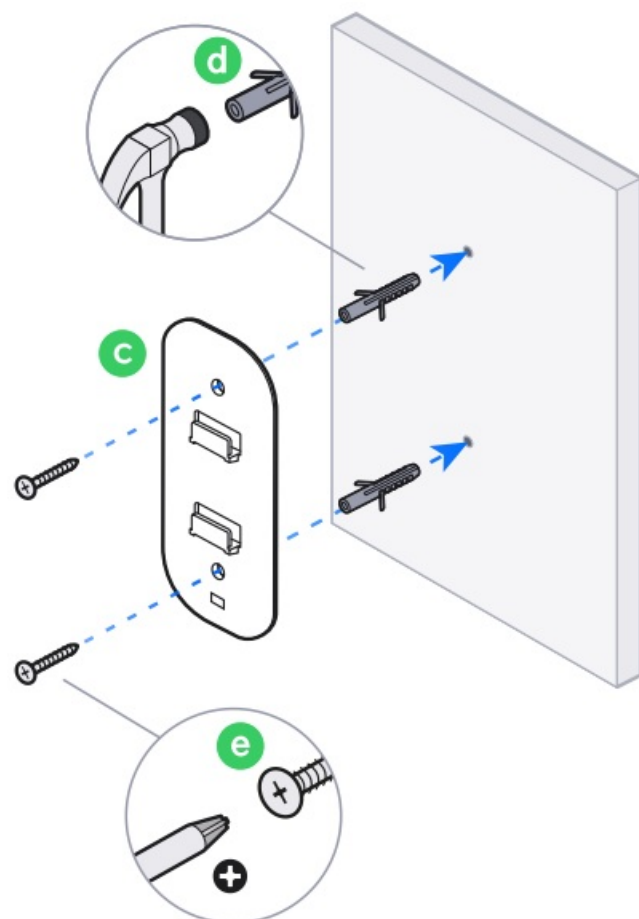
2x

d



2x

e



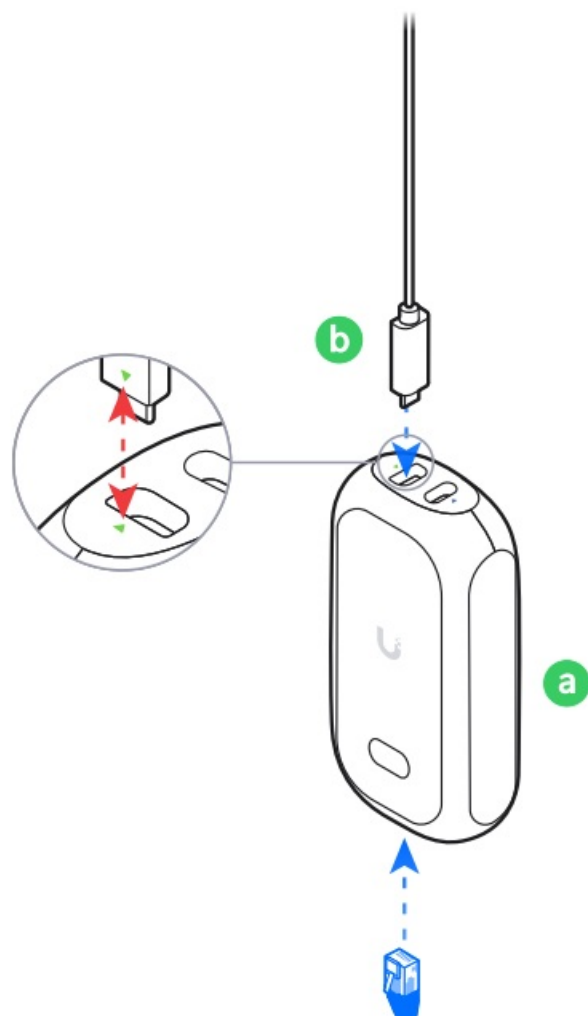
1x

a

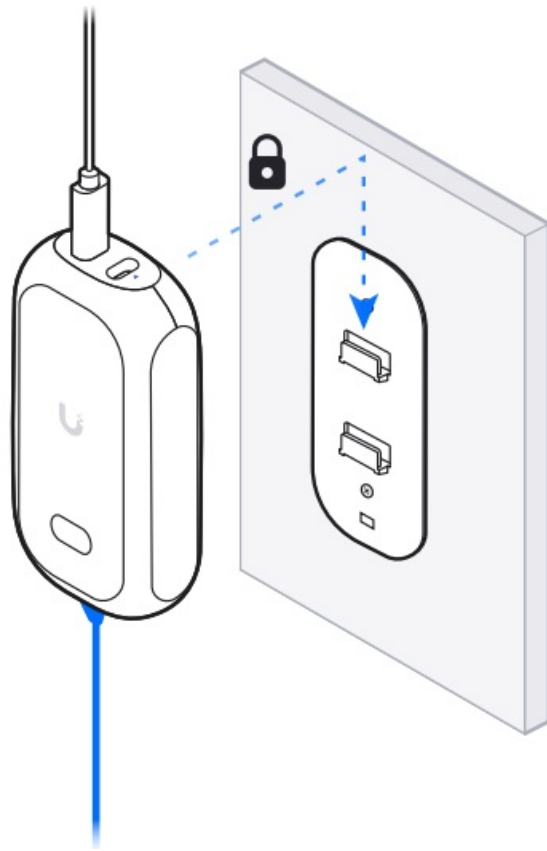


1x

b

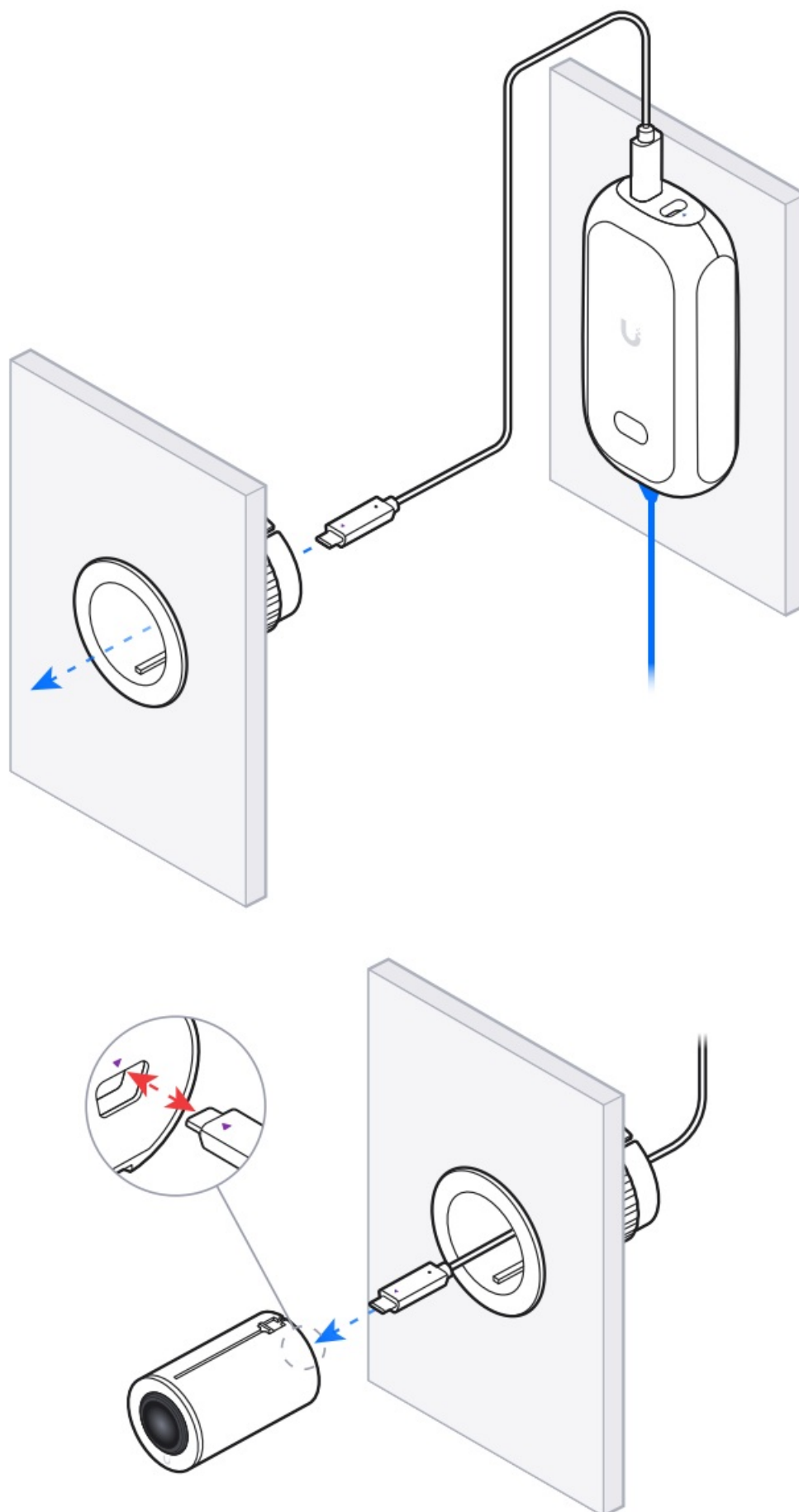


5

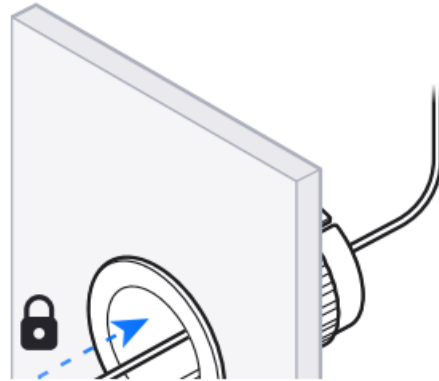




6



8



9



Internet



UniFi Gateway  
Console





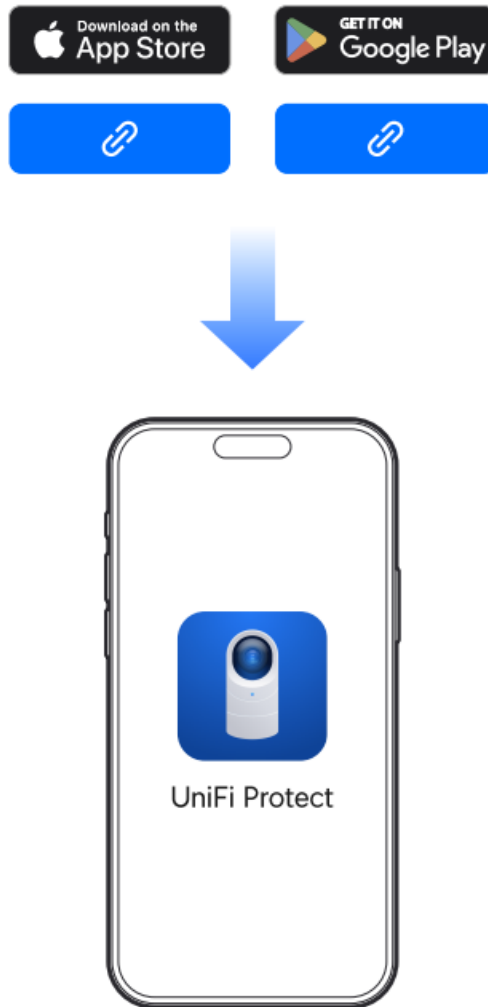
Switching



PoE



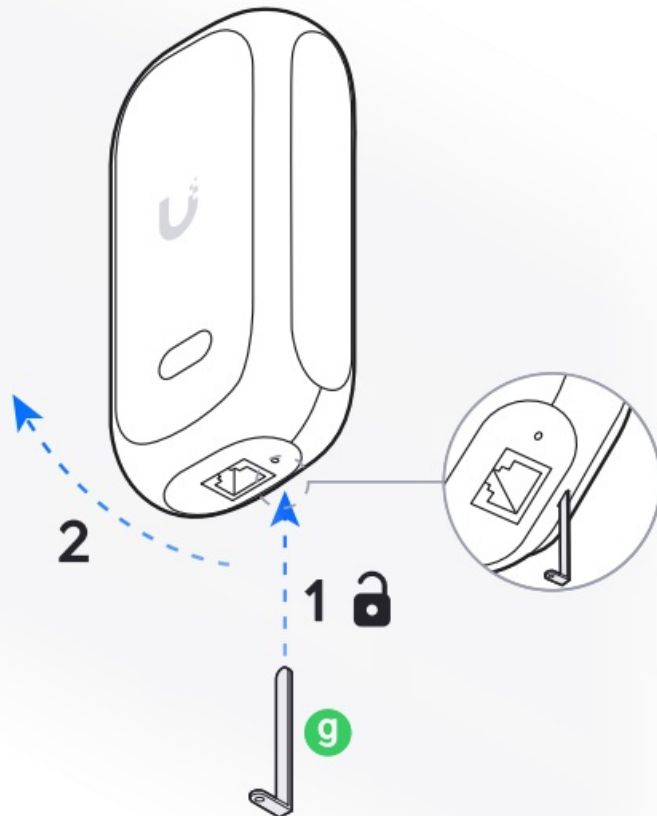
# 10





1x

g



AI Theta Audio

[Buy >](#)



If you need further assistance, visit our [Help Center](#) or contact [Ubiquiti Support](#).

©2023 Ubiquiti Inc. All rights reserved. Ubiquiti, Ubiquiti Networks, the Ubiquiti U logo, UniFi, UniFi Protect, and Theta are trademarks or registered trademarks of Ubiquiti Inc. in the United States and in other countries. All other trademarks are the property of their respective owners. App Store is a service mark of Apple Inc. registered in the U.S. and other countries. Android, Google, Google Play, the Google Play logo are trademarks of Google LLC. All other trademarks are the property of their respective owners.

---

## Documents / Resources

	<p><a href="#">Ubiquiti Networks AI Theta Hub</a> [pdf] Installation Guide AI Theta Hub, AI, Theta Hub, Hub</p>
---	---

## References

- [U AI Theta Audio Installation Guide](#)
- [U Ubiquiti Account](#)
- [🌐 AI Theta Hub Installation Guide](#)
- [U AI Theta Audio - Ubiquiti Store United States](#)
- [U AI Theta Pro Wide-Angle Lens - Ubiquiti Store United States](#)
- [U AI Theta Pro 360 Lens - Ubiquiti Store United States](#)
- [U Ubiquiti Store United States](#)
- [User Manual](#)

[Manuals+](#), [Privacy Policy](#)

This website is an independent publication and is neither affiliated with nor endorsed by any of the trademark owners. The "Bluetooth®" word mark and logos are registered trademarks owned by Bluetooth SIG, Inc. The "Wi-Fi®" word mark and logos are registered trademarks owned by the Wi-Fi Alliance. Any use of these marks on this website does not imply any affiliation with or endorsement.