

uAvionix microLink BVLOS C2 Data Link User Guide

[Home](#) » [uAvionix](#) » uAvionix microLink BVLOS C2 Data Link User Guide 



microLink
Quick Start Guide



Contents

[1 Appendix A Quick Start Guide](#)

[1.1 skyStation](#)

[1.2 microLink](#)

[1.3 skyLinkApp and Mission Planner](#)

[2 Documents / Resources](#)

[3 Related Posts](#)

Appendix A Quick Start Guide

The skyStation and airborne microLink radios are shipped from the factory with a default configuration that allows them to connect on power up right out of the box. This quick start guide illustrates the steps to get up and going with your pixHawk flight controller without any manual configuration. Note that the radios depend on a GPS 3D fix in order to connect. A GPS signal repeater is typically required for indoor operation. Also note that some firewalls, antivirus/antimalware, and network switches may block communication on certain network ports. Unblocking TCP ports 30011 and 30013 as well as UDP ports 30010 and 30012 may be necessary.

skyStation

- Connect the skyStation to the Power+Data port of the power over ethernet (PoE) adapter. Connect your router to the Data Only port of the PoE adapter.

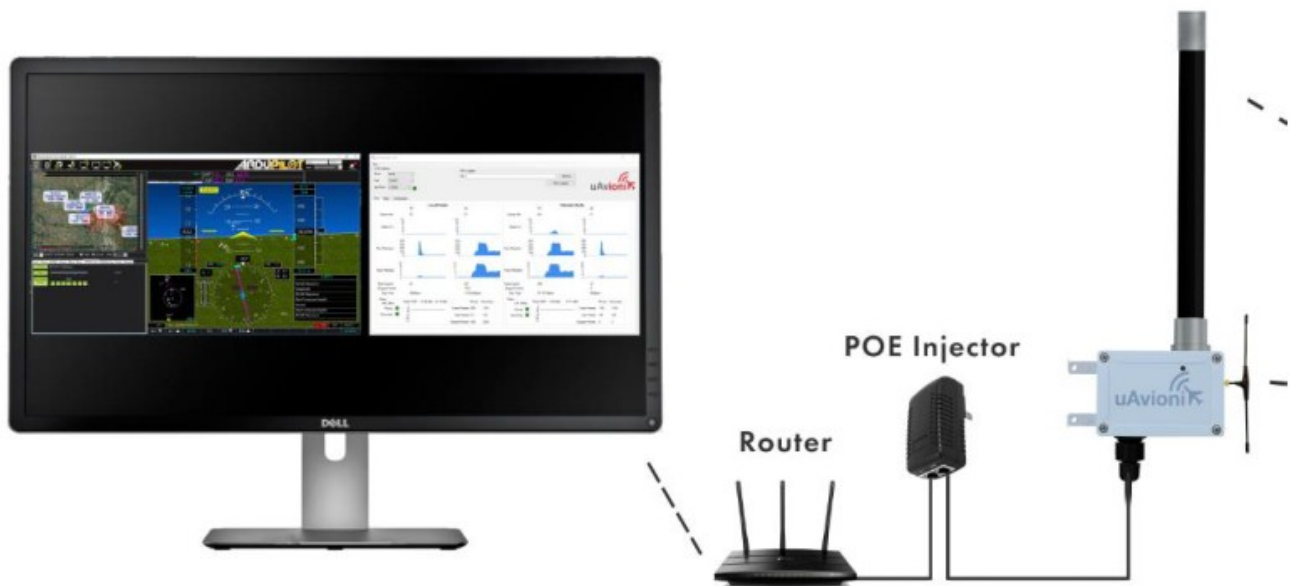


Figure 1-1 skyStation network connections

microLink

- Connect the PixHawk2 TELEM 1 port to the microLink USER port (top connector).
- Connect the microFYX GPS to the microLink CNTL radio port (bottom connector).

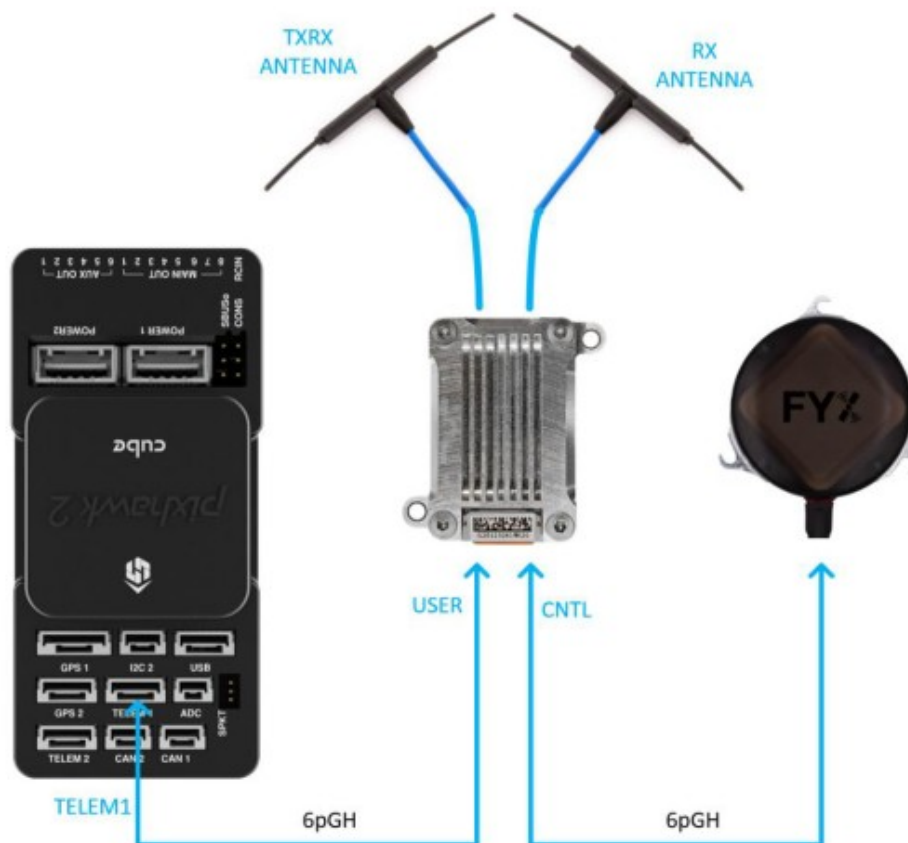


Figure 1-2 Airborne microLink connections.

- Apply power to your pixHawk. The TELEM 1 port supplies power to the microLink and to the microFYX.

skyLinkApp and Mission Planner

- Launch the skyLinkApp.exe application. The skyStation and skyLinkApp will discover one another and automatically connect. Note the IP address of the skyStation is displayed in the upper left corner of skyLinkApp. This is the address you will connect to from the Mission Planner application.

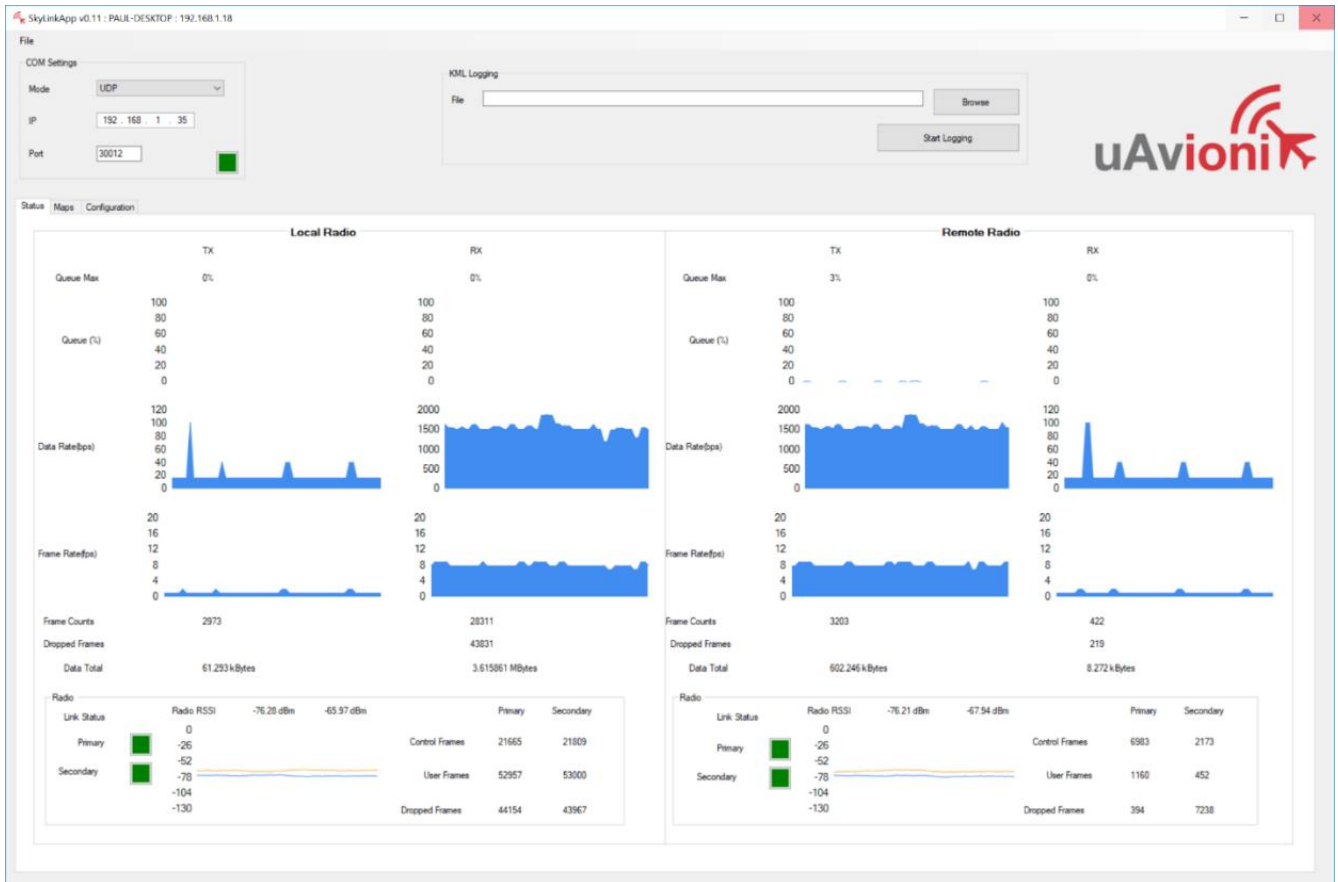


Figure 1-3 Automatic discovery. The IP address of the skyStation appears in the upper left

If you encounter a message from Windows Defender Firewall when launching skyLinkApp, select Private Networks and press "Allow Access".



- Connect Mission Planner to the skyStation using a TCP connection, the skyStation IP Address, and port number 30011.



Figure 1-4 Select TCP connection type

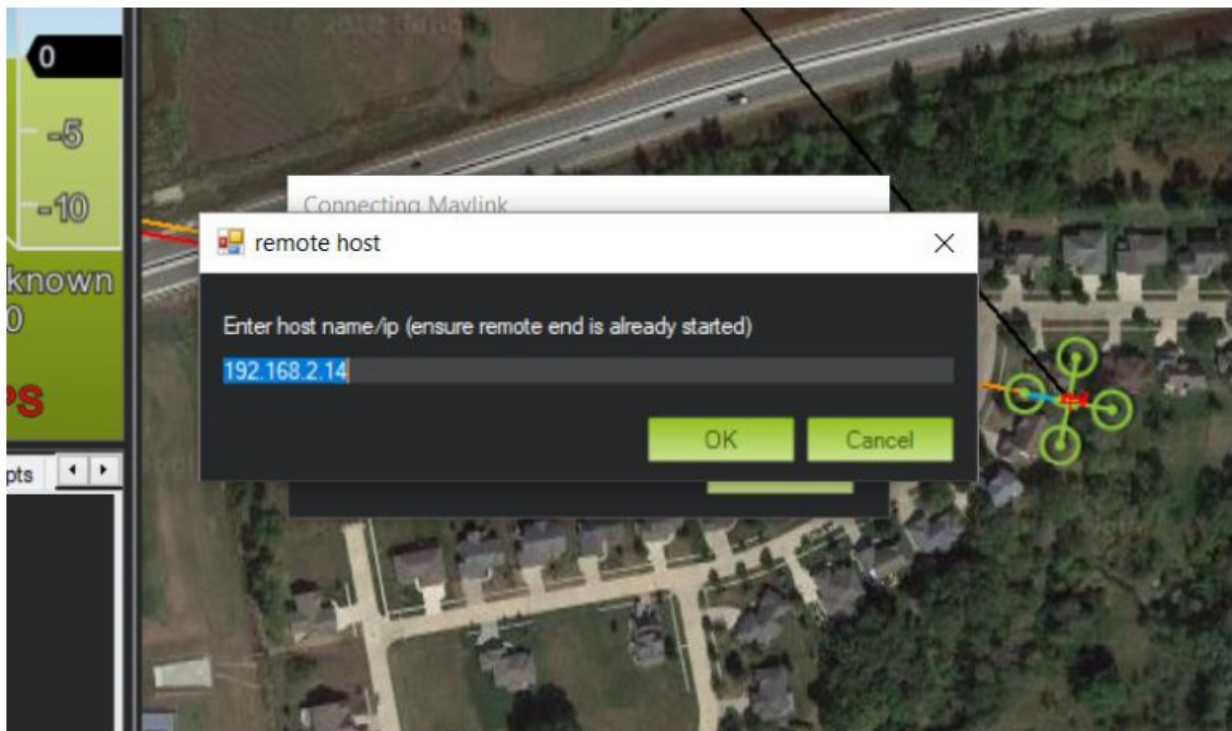


Figure 1-5 Enter the IP address of the skyStation

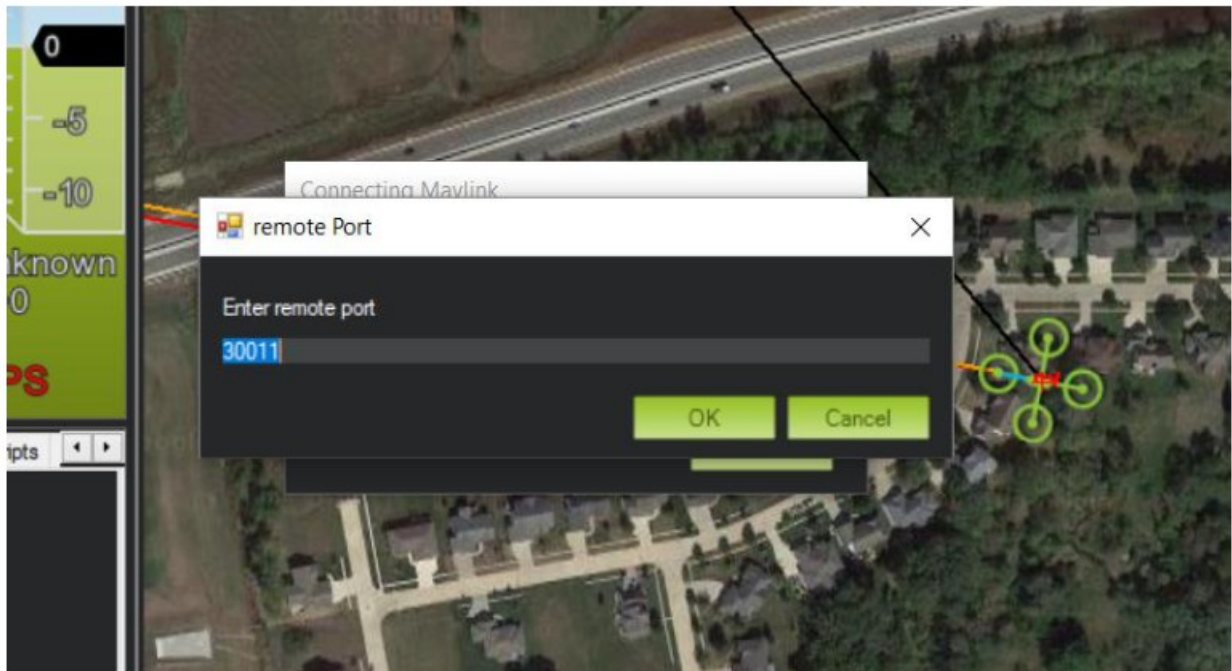



Figure 1-6 Enter the USER Data Port number from the skyStation (30011 default)

- Use skyLinkApp to verify that the radios are connected.
- Once connected and all the parameters are downloaded you are ready to plan your mission and fly!

UAV-1005202-001 Rev A



 The image shows the cover of the uAvionix microLink Quick Start Guide. It features the uAvionix logo at the top left, followed by 'microLink' and 'Quick Start Guide'. Below this is a small image of the microLink device, which is a blue rectangular unit with a black cable and a red connector. The uAvionix logo is also at the bottom right.	<p>uAvionix microLink BVLOS C2 Data Link [pdf] User Guide</p> <p>microLink, BVLOS C2 Data Link, microLink BVLOS C2 Data Link</p>
---	--