



## U-tec LATCH 5 Smart Fingerprint Lock Installation Guide

[Home](#) » [U-tec](#) » U-tec LATCH 5 Smart Fingerprint Lock Installation Guide 

### Contents

- [1 U-tec LATCH 5 Smart Fingerprint Lock](#)
- [2 OVERVIEW](#)
- [3 Install latch and strike](#)
- [4 Install exterior keypad assembly](#)
- [5 Install interior assembly](#)
- [6 Install interior / exterior lever](#)
- [7 Documents / Resources](#)
- [8 Related Posts](#)

***ULTRALOQ***

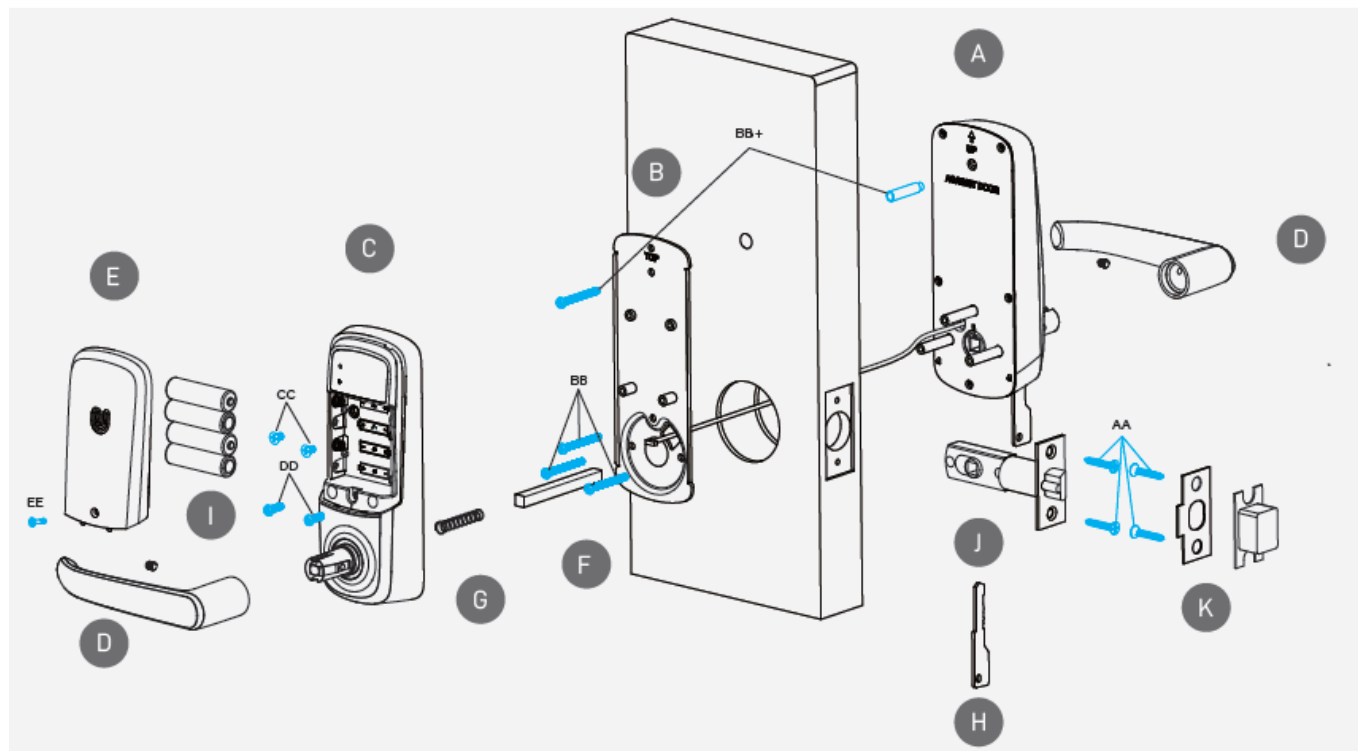
### U-tec LATCH 5 Smart Fingerprint Lock



## Need help?

To get help or learn more <https://support.u-tec.com>

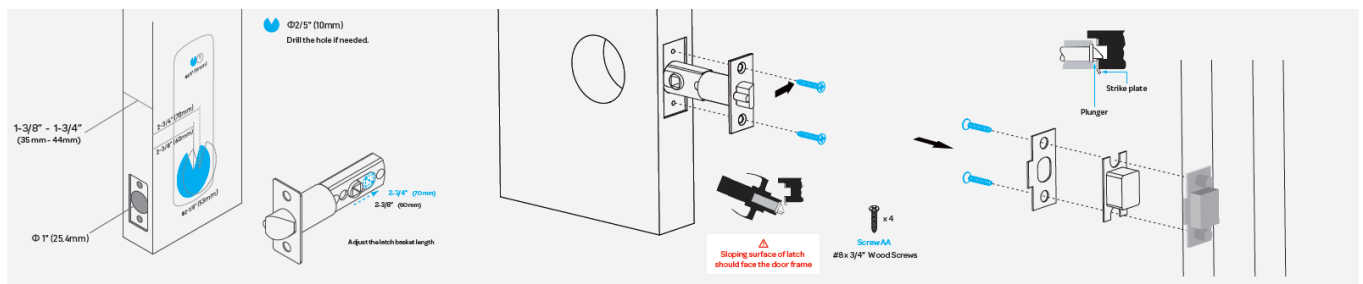
## OVERVIEW



Part Code	Part Name	Quantity
A	Exterior Assembly	1
B	Interior Mounting Plate	1
C	Interior Assembly	1
D	Handles	2
E	Cover	1
F	Spindle	1
G	Spring	1
H	Backup Keys	3
I	AA Batteries	4
J	Latch	1
K	Strike	1
	Reset Needle	1
	Screwdriver	1
	Drilling Template	1

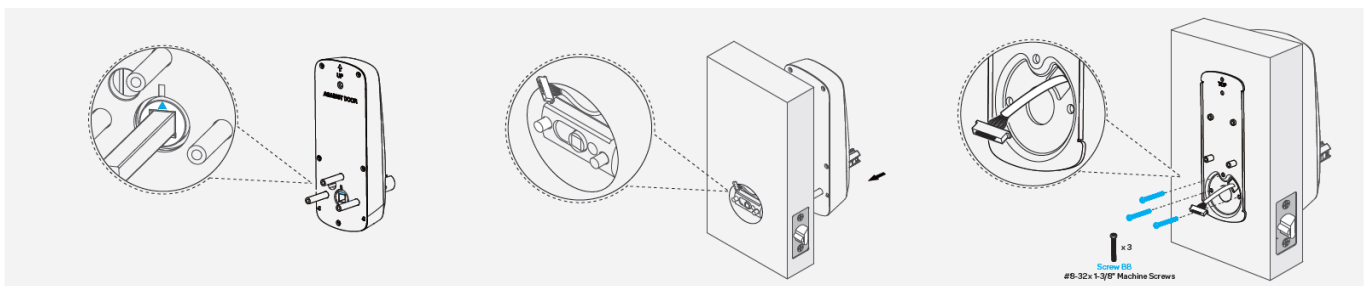
Screw Code	Screw Name	Quantity
AA	#8 x 3/4" Wood Screws	4
BB	#8-32 x 1-3/8" Machine Screws	3
BB +	M4x25 Machine Screw (Optional)	1
	M4 x 30+6 Stud Screw (Optional)	1
CC	#8-32 x 5/16" Machine Screws	2
DD	#8-32 x 15/32" Machine Screws	2
EE	#4-32 x 15/32" Captive Screw	1

## Install latch and strike



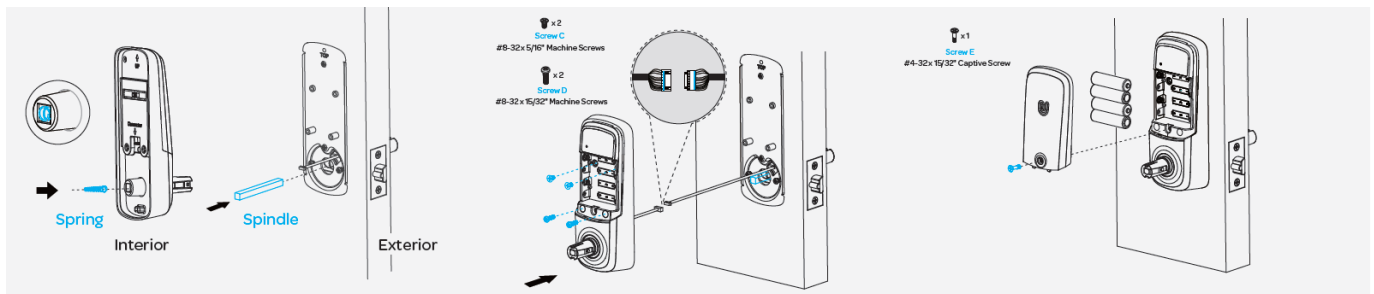
1. Prepare the door
2. Make sure the latch angle faces the door jamb.
3. Install the strike on the door frame and ensure the latch will match the strike

## Install exterior keypad assembly



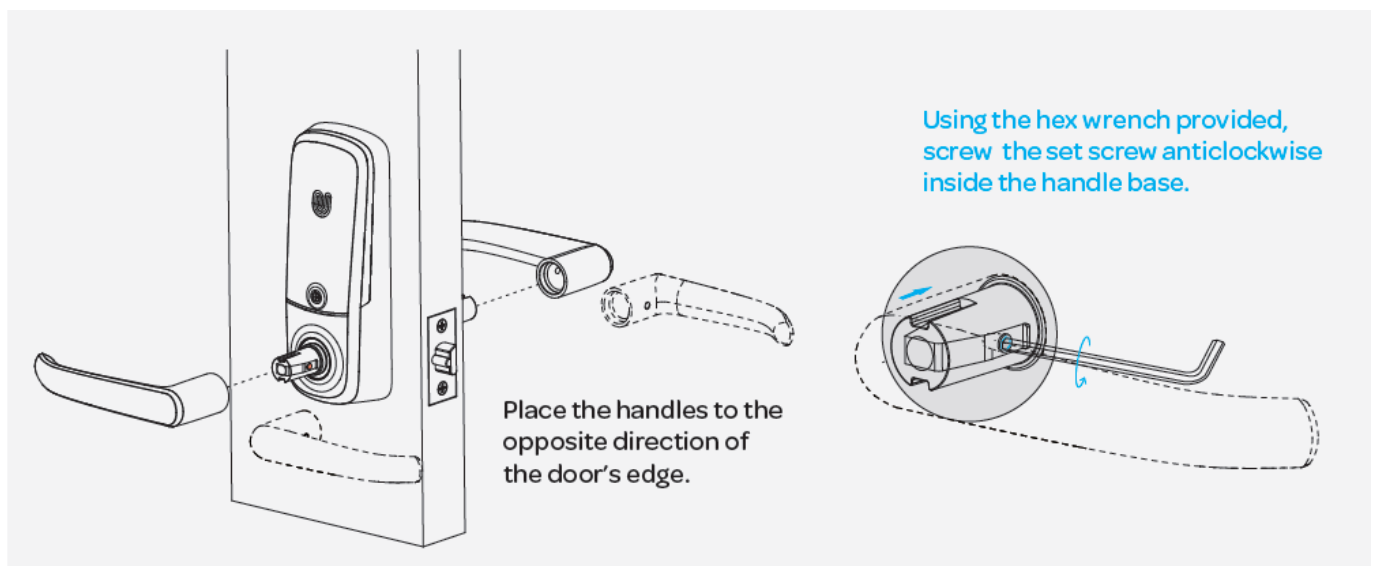
1. Make sure the triangle is facing upwards as illustrated.
2. Route the cable above the bolt and through the hole stated below.
3. Install Interior Mounting Plate

## Install interior assembly



1. Install the spring if the door thickness is over 1.65"(42mm). Plug in the spindle
2. Attach the connectors as indicated and secure the interior assembly
3. Install batteries and cover.

### Install interior / exterior lever



### Documents / Resources

	<p><a href="#">U-tec LATCH 5 Smart Fingerprint Lock</a> [pdf] Installation Guide  LATCH 5 Smart Fingerprint Lock, LATCH 5, Smart Fingerprint Lock, Fingerprint Lock, Lock</p>
--	---