

U-PROX X12971 Wireless Relay AC Module Instruction Manual

August 13,
2022

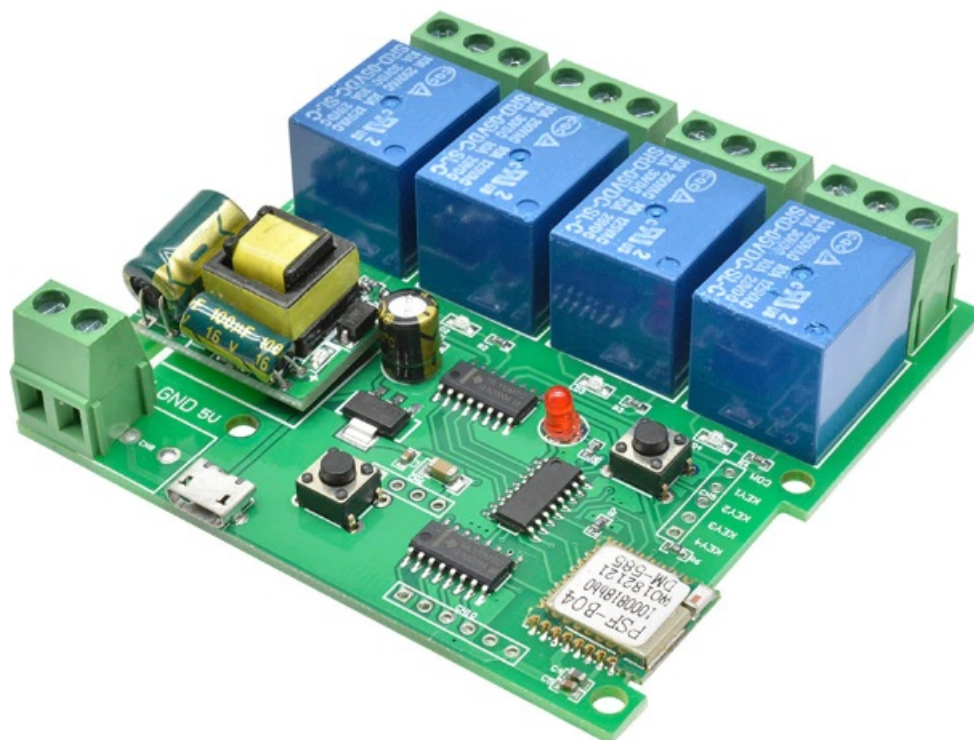
[Home](#) » [U-PROX](#) » **U-PROX X12971 Wireless Relay AC Module Instruction Manual** 

Contents [[hide](#)]

- [1 U-PROX X12971 Wireless Relay AC Module](#)
- [2 WIRELESS RELAY AC MODULE](#)
- [3 Functional parts of the device \(see picture\)](#)
- [4 TECHNICAL SPECIFICATIONS](#)
- [5 COMPLETE SET](#)
- [6 WARRANTY](#)
- [7 DANGER OF ELECTROCUTION!](#)
- [8 REGISTRATION](#)
- [9 INSURANCE TEALLA ST FTION LOR OPOCATIONTIMAL](#)
- [10 INDICATION IN RANGE](#)
- [11 DEVICE PLACEMENT](#)
- [12 MANUAL RELAY ACTIVATION](#)
- [13 Documents / Resources](#)
- [14 Related Posts](#)

U-PROX

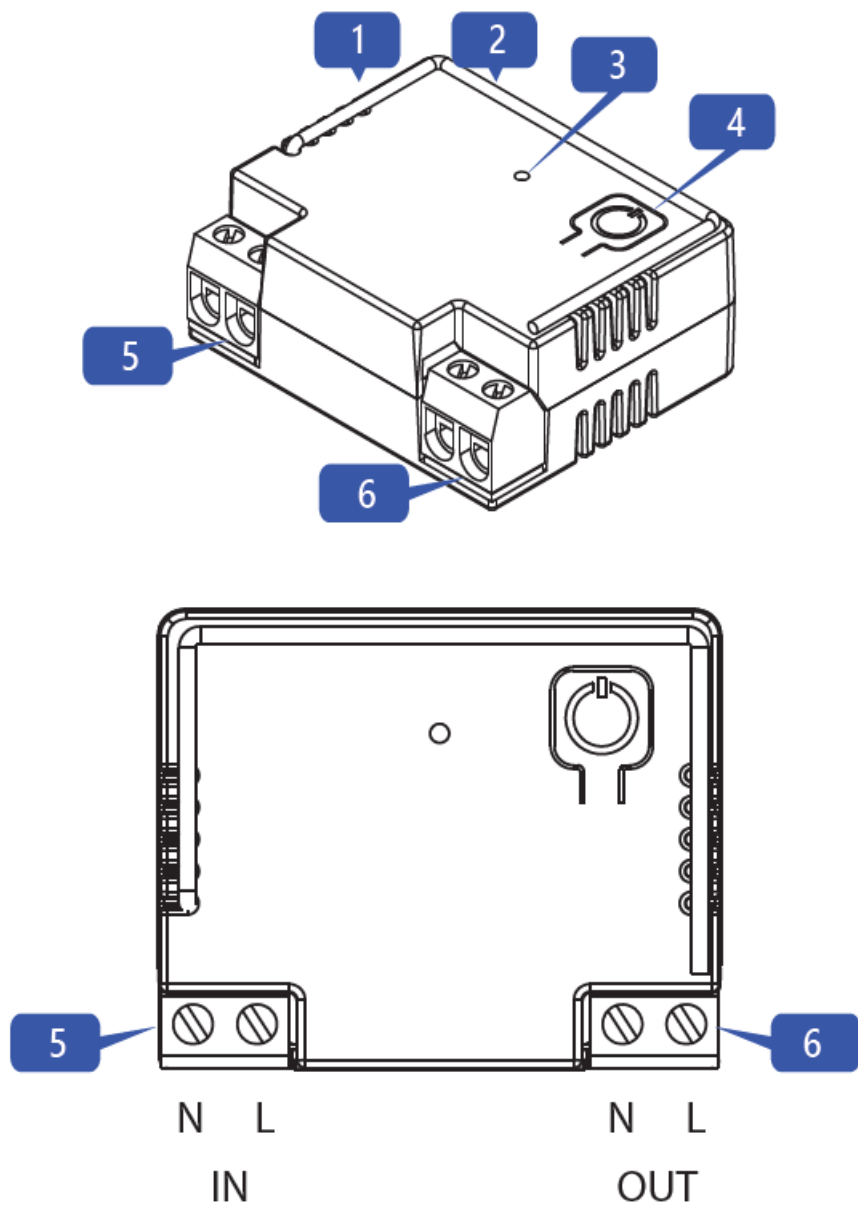
U-PROX X12971 Wireless Relay AC Module



WIRELESS RELAY AC MODULE

U-Prox Relay AC – is a wireless relay which is designed to control EN electrical supply of appliances remotely. The device is connected to the control panel and is configured with the U-Prox Installer mobile application.

Functional parts of the device (see picture)



1. Device case
2. Antenna
3. LED indicator
4. On/off button
5. Power IN contacts
6. Power OUT contacts

TECHNICAL SPECIFICATIONS

- Output: OUT N, OUT L 10A @ 250V AC max
- Operations: 100 000
- Power: 110-250V AC, 50-60Hz
- Modes: Impulse, trigger (bistable)

- Impulse duration: adjustable: 0.1 ... 250 seconds
- Response delay: max. 5 seconds
- Radio frequency: ISM-band wireless interface with several channels
- Communication: Secure two way communication, sabotage detection, key – 256 bits
- Operating temperature range: -10°C to +55°C
- Dimensions & weight: 44 x 36 x 19,4 mm & 55 grams
- Case colour: white, black

COMPLETE SET

1. U-Prox Relay AC;
2. Quick start guide

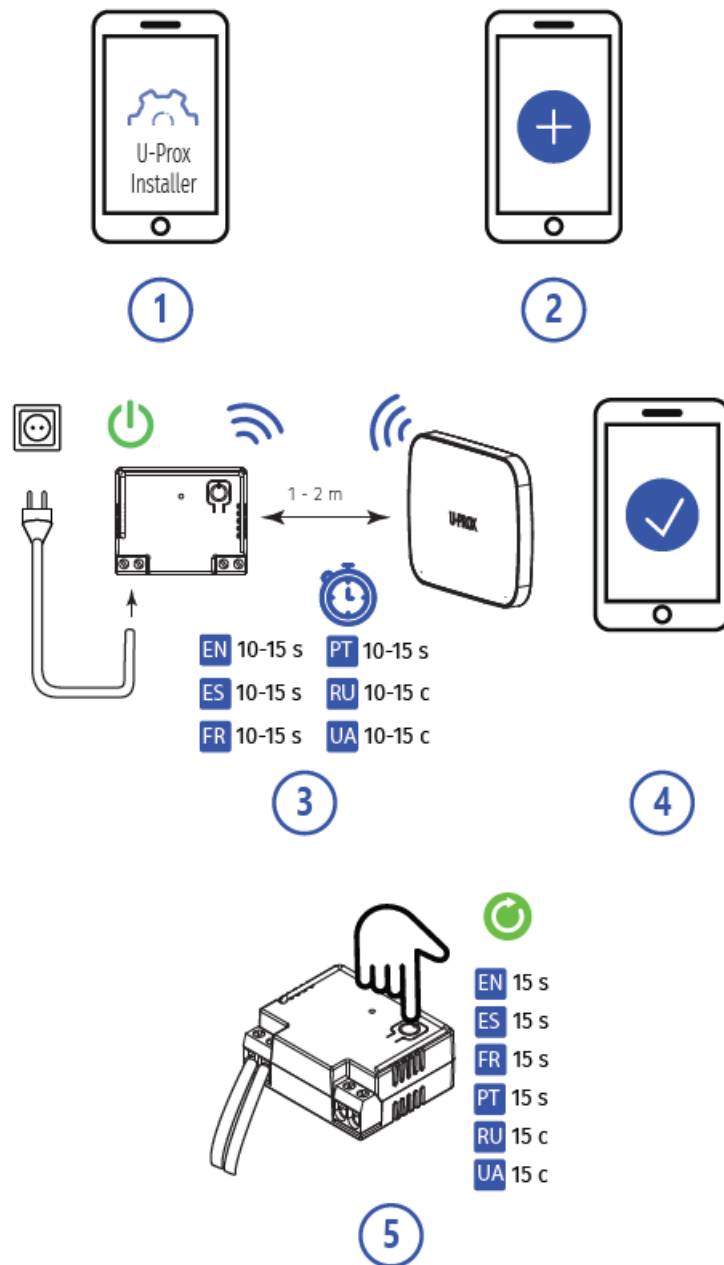
WARRANTY

Warranty for U-Prox devices (except batteries) is valid for two years after the purchase date. If the device operates incorrectly, please contact support@u-prox.systems at first, maybe it can be solved remotely.

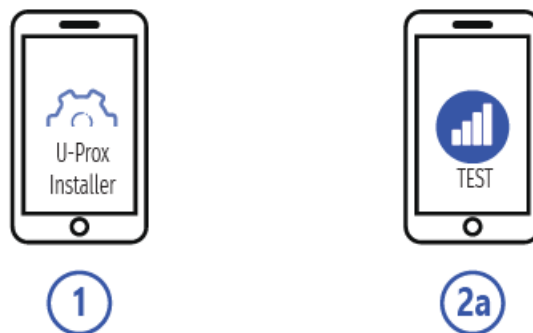
DANGER OF ELECTROCUTION!

Failure to observe recommendations included in this manual may be dangerous or cause a violation of the law. The manufacturer will not be held responsible for any loss or damage resulting from not following the instructions of operating manual. The device is designed to control other electrical devices and must be installed on a 10A line in wall switch boxes with depth not less than 60 mm or other protective cases. All works on the device may be performed only by a qualified and licensed electrician. Observe national regulations. Any maintenance, introducing changes into the configuration of connections or the load must be always performed with disabled fuse or power supply. After installation, all parts of the device, including the antenna, must be inaccessible to contact with the user.

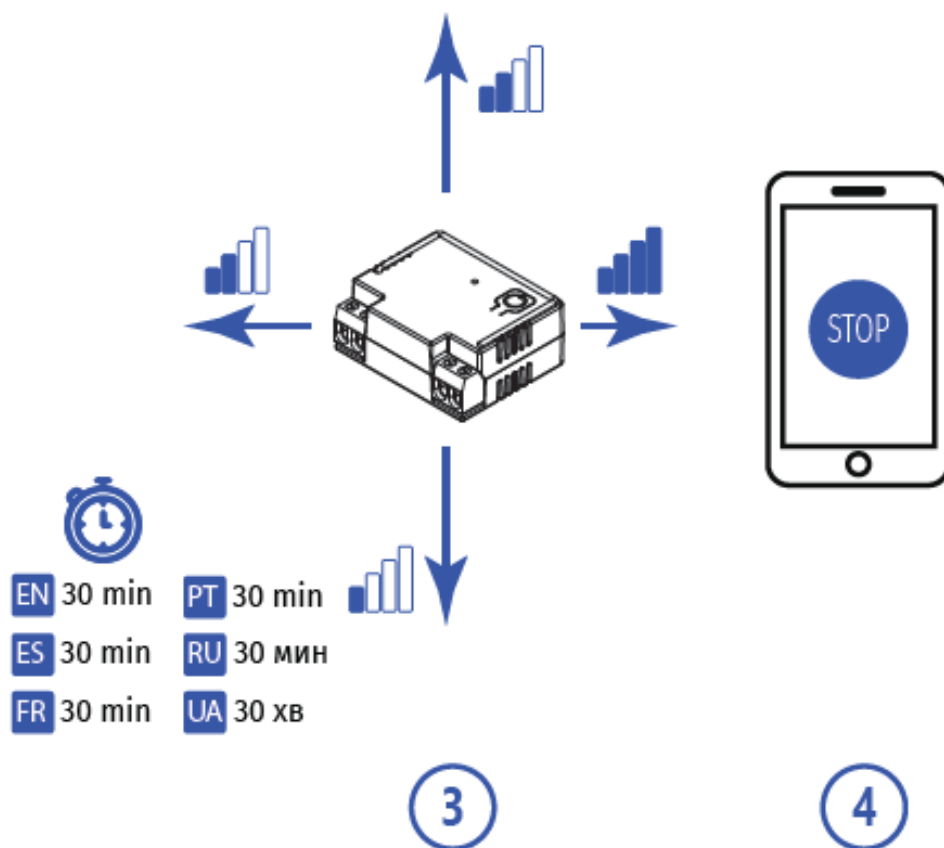
REGISTRATION



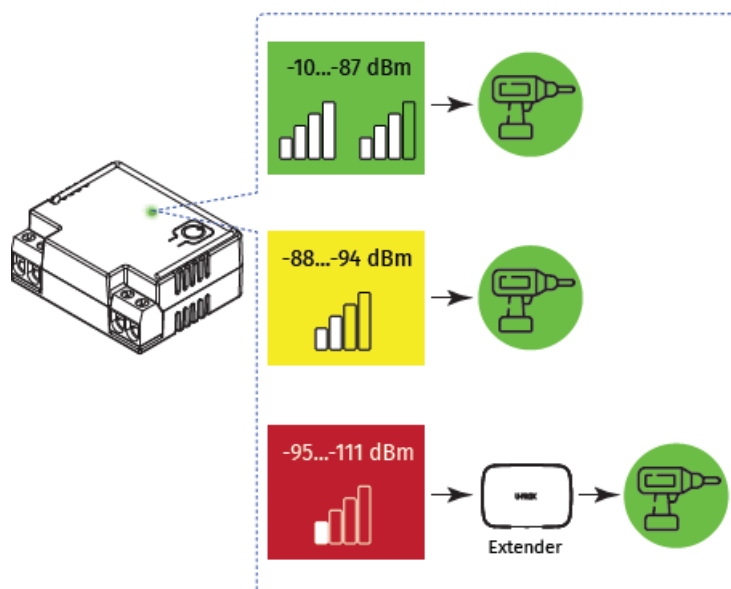
INSURANCE TEALLA ST FTION LOR OPOCATIONTIMAL



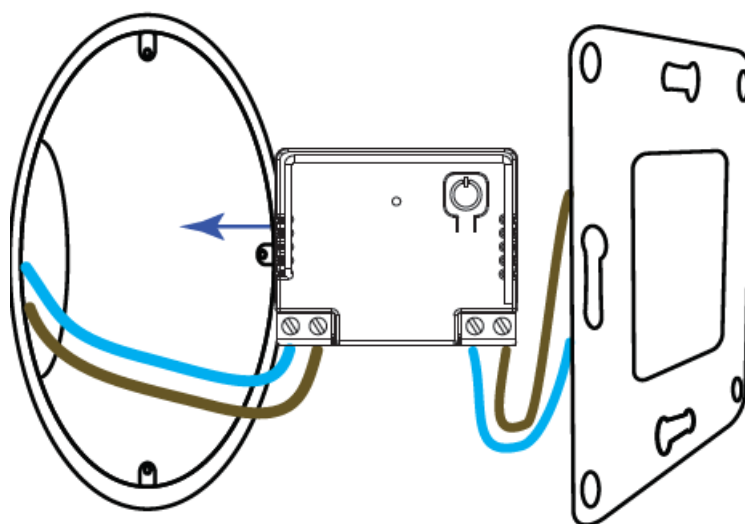
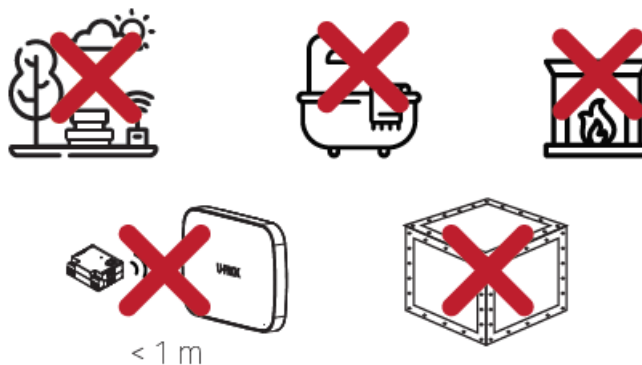
Due to Grade 2 requirement, RF link works with reduction of power in 8 dB



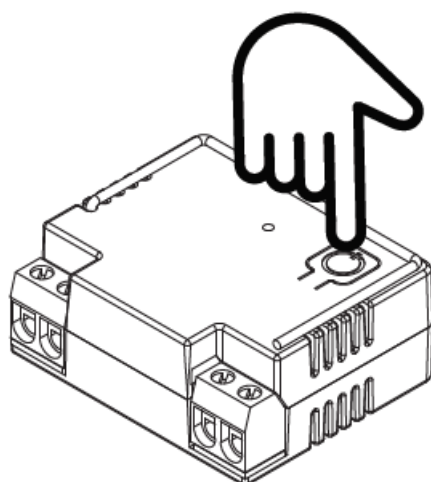
INDICATION IN RANGE



DEVICE PLACEMENT



MANUAL RELAY ACTIVATION



EN 1 s

ES 1 s

FR 1 s

PT 1 s

RU 1 c

UA 1 c

Documents / Resources

	U-PROX X12971 Wireless Relay AC Module [pdf] Instruction Manual X12971, Wireless Relay AC Module, X12971 Wireless Relay AC Module, Relay AC Module, AC Module, Module
--	---

Related Posts



[FLUKE a3001 FC Wireless iFlex AC Current Module User Guide](#)

FLUKE a3001 FC Wireless iFlex AC Current Overview
INRUSH Charging Wifi



[Altronix RBSN Relay Module Instruction Manual](#)

Altronix RBSN Relay Module Specifications 12VDC or 24VDC selectable operation. Current draw 15mA. Factory set for 12VDC; cut...



[NETGEAR 22100553 Wireless Module Instructions](#)

22100553 Wireless Module Instructions Manual We, NETGEAR Inc. declare that the module is only approved for use by...



[Altronix RBST Relay Module User Manual](#)

RBST Relay Module Specifications: 6VDC or 12VDC or 24VDC selectable operation. Current draw 30mA. 1A/120VAC or 2A/28VDC DPDT...

U-PROX

AC Module, Module, Relay AC Module, U-PROX, Wireless Relay AC Module, X12971, X12971 Wireless Relay AC Module

—Previous Post

[U-PROX Multiplexer Wired Alarm Integration Module User Guide](#)

Next Post—

[U-PROX Wireless Outdoor Siren User Manual](#)

Leave a comment

Your email address will not be published. Required fields are marked *

Comment *

Name

Email

Website

☐ Save my name, email, and website in this browser for the next time I comment.

Post Comment

Search

Search ...

Search

Manuals+,