



# U-PROX WIREPORT Wireless Module with 3 Inputs User Manual

[Home](#) » [U-PROX](#) » U-PROX WIREPORT Wireless Module with 3 Inputs User Manual 

## U-PROX WIREPORT

### WIRED PORT (INPUT) MODULE

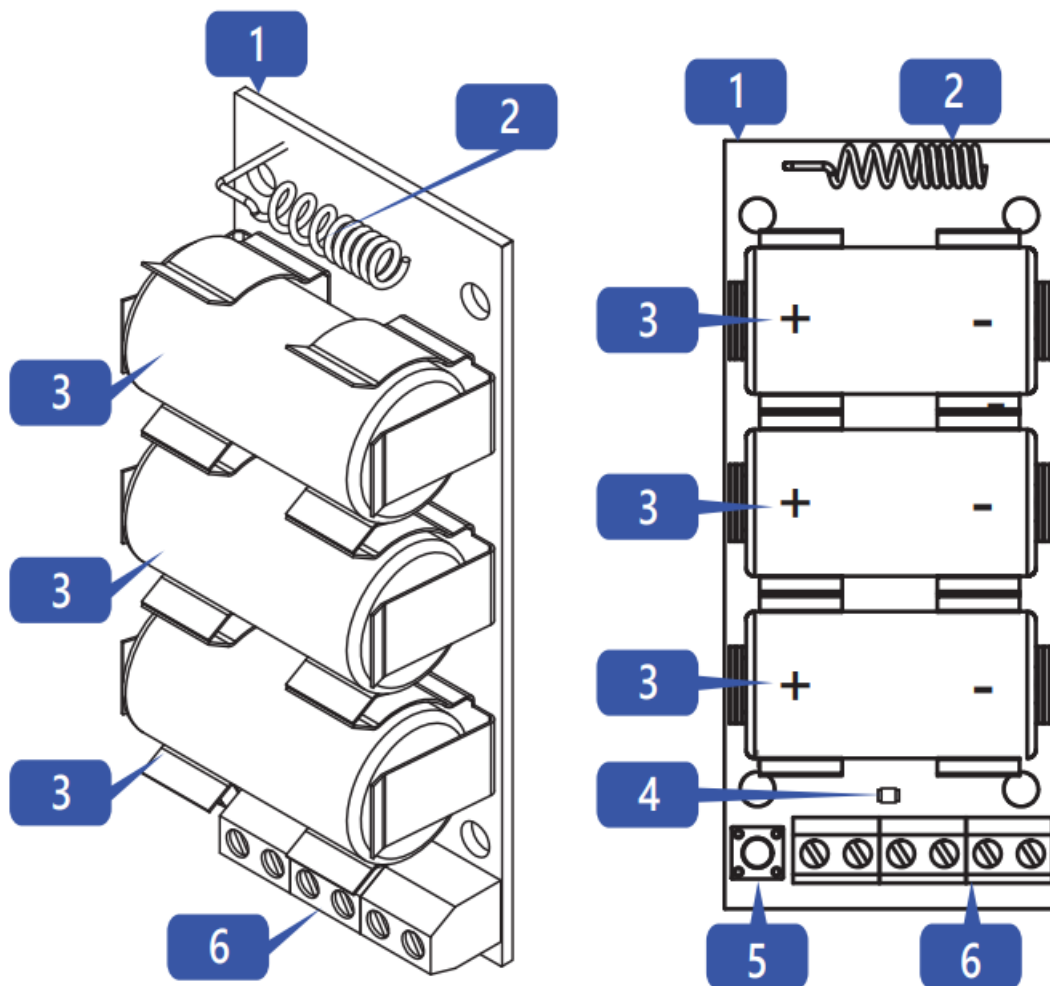
Is a part of the U-Prox security alarm system  
User manual

Manufacturer: Integrated Technical Vision Ltd.  
Vasyl Lypkivsky str. 1, 03035, Kyiv, Ukraine

#### Contents

- [1 WIREPORT Wireless Module with 3 Inputs](#)
- [2 TECHNICAL SPECIFICATIONS](#)
- [3 COMPLETE SET](#)
- [4 WARRANTY](#)
- [5 REGISTRATION](#)
- [6 INDICATION IN RANGE TEST MODE](#)
- [7 INSTALLATION](#)
- [8 INDICATION](#)
- [9 CONNECTIONS](#)
- [10 Documents / Resources](#)
  - [10.1 References](#)
- [11 Related Posts](#)

**WIREPORT Wireless Module with 3 Inputs**



**U-Prox Wireport** – is a wireless module with 3 inputs, designed to connect wired equipment (detectors, IR barriers etc.) to wireless U-Prox control panel. It has 3V controlled power output and can be built into detectors. The device is connected to the control panel and is configured with the U-Prox Installer mobile application.



U-Prox Installer

<https://u-prox.systems/Installer>

#### Functional parts of the device (see picture)

1. Device plate
2. Antenna
3. CR123A battery
4. Light indicator
5. On/off button
6. Terminal block

## TECHNICAL SPECIFICATIONS

Inputs	3 – ALM1, ALM2 (Alarm) and TMP (Tamper switch)
Power output	3V, 50 mA max.
Battery	Three (3) CR123A batteries, 1500 mAh. Up to 5 years, (2 wired detectors, 24 µA each in standby)
Radio frequency	ISM-band wireless interface with several channels
	ITU region 1 (EU, UA): 868.0 to 868.6 MHz, bandwidth 100kHz, 20 mW max., up to 4800m (in line of sight) ITU region 3 (AU): 916.5 to 917 MHz, bandwidth 100kHz, 20 mW max., up to 4800m (in line of sight)
Communication	Secure two way communication, sabotage detection, key – 256 bits
Dimensions & weight	-10°C to +55°C
Operating temperature range	89.7 x 38.8 x 20.5 mm & 0.34 kg

## COMPLETE SET

1. U-Prox Wireport; 2. Three CR123A batteries (pre-installed);
2. Quick start guide

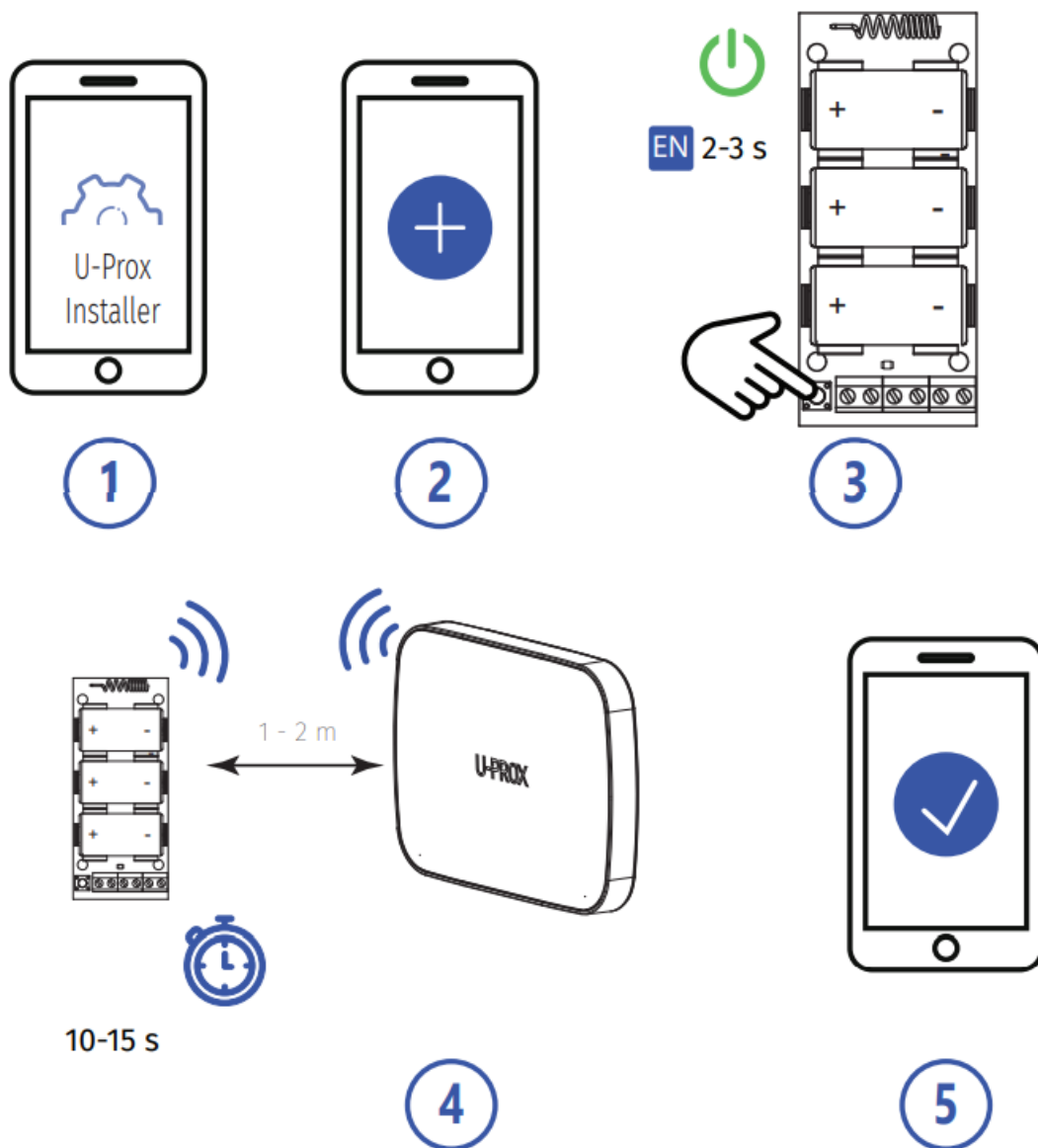
CAUTION. RISK OF EXPLOSION IF BATTERY IS REPLACED BY AN INCORRECT TYPE. DISPOSE USED BATTERIES ACCORDING TO THE NATIONAL REGULATIONS

## WARRANTY

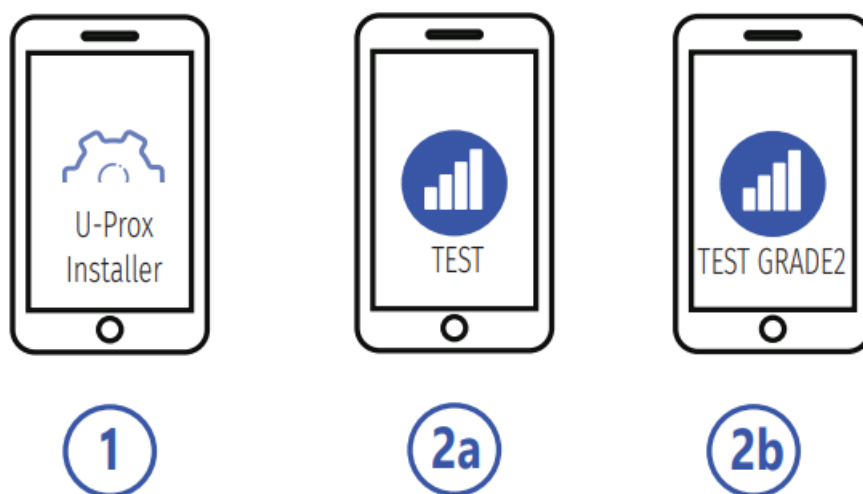
Warranty for U-Prox devices (except batteries) is valid for two years after the purchase date.

If the device operates incorrectly, please contact [support@u-prox.systems](mailto:support@u-prox.systems) at first, maybe it can be solved remotely.

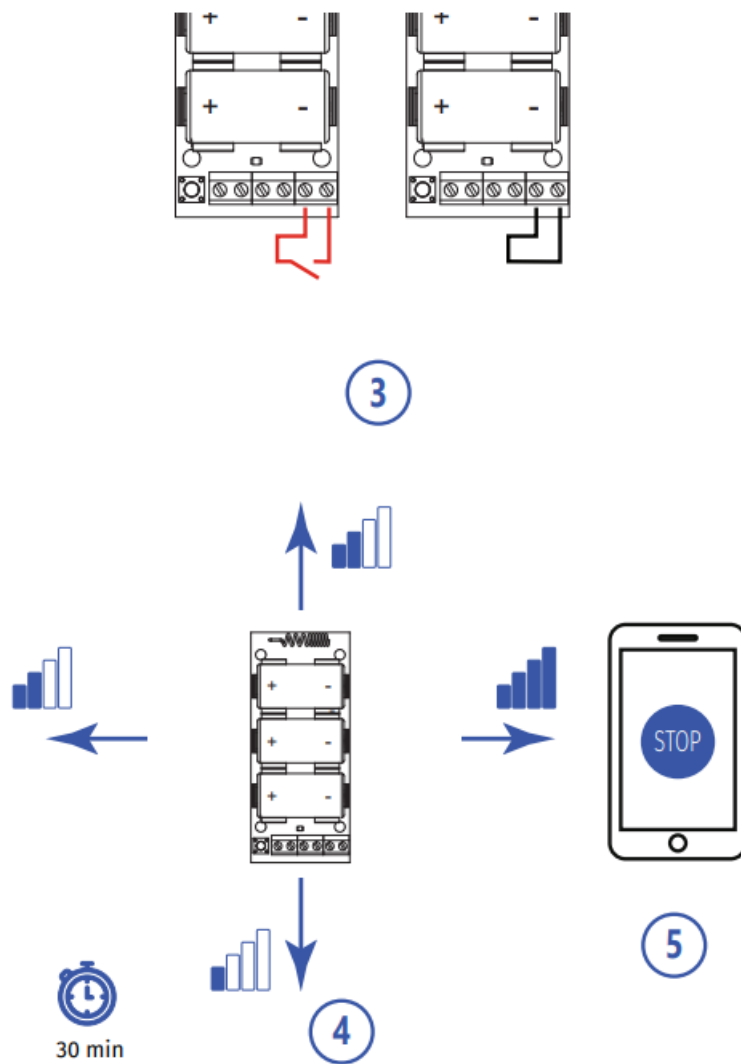
## REGISTRATION



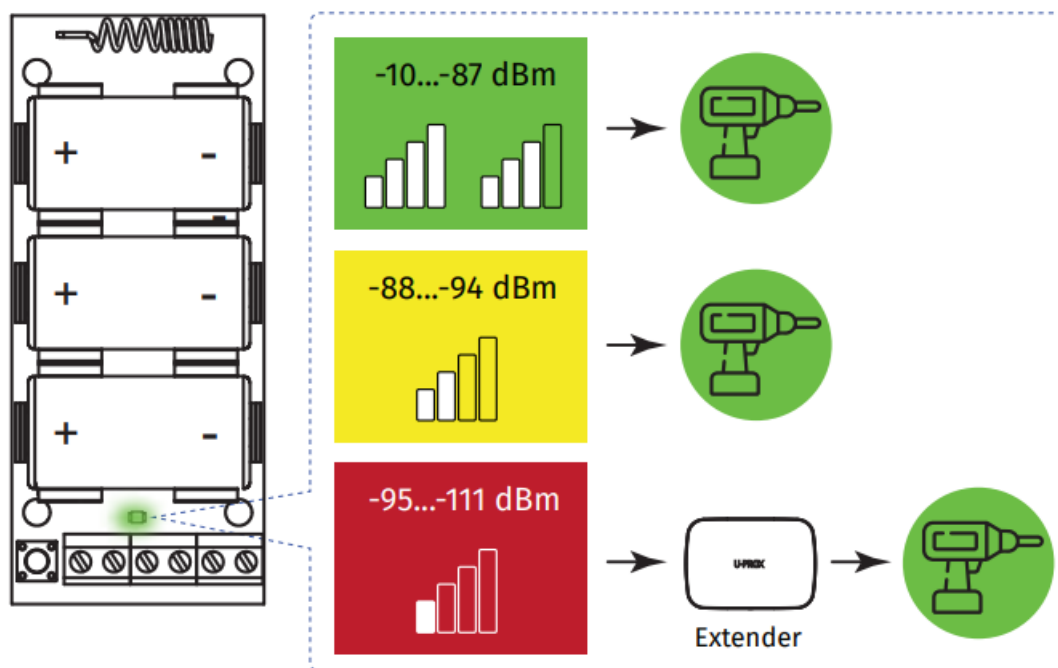
#### RANGE TEST FOR OPTIMAL INSTALLATION LOCATION



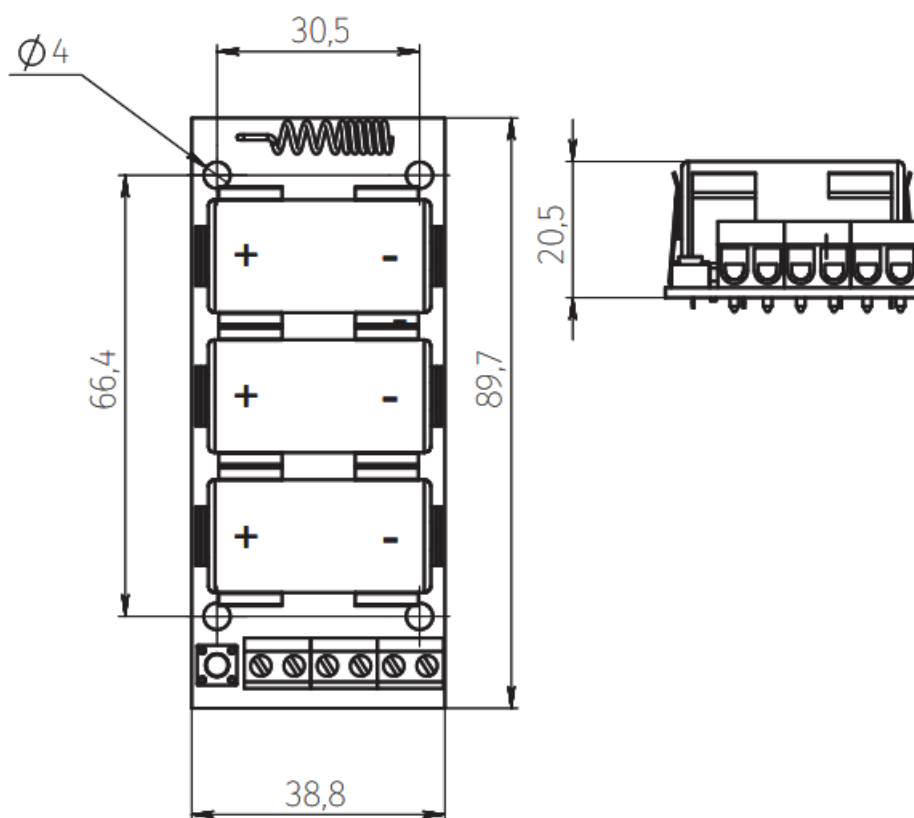
Due to Grade 2 requirement RF link works with reduction of power in 8 dB



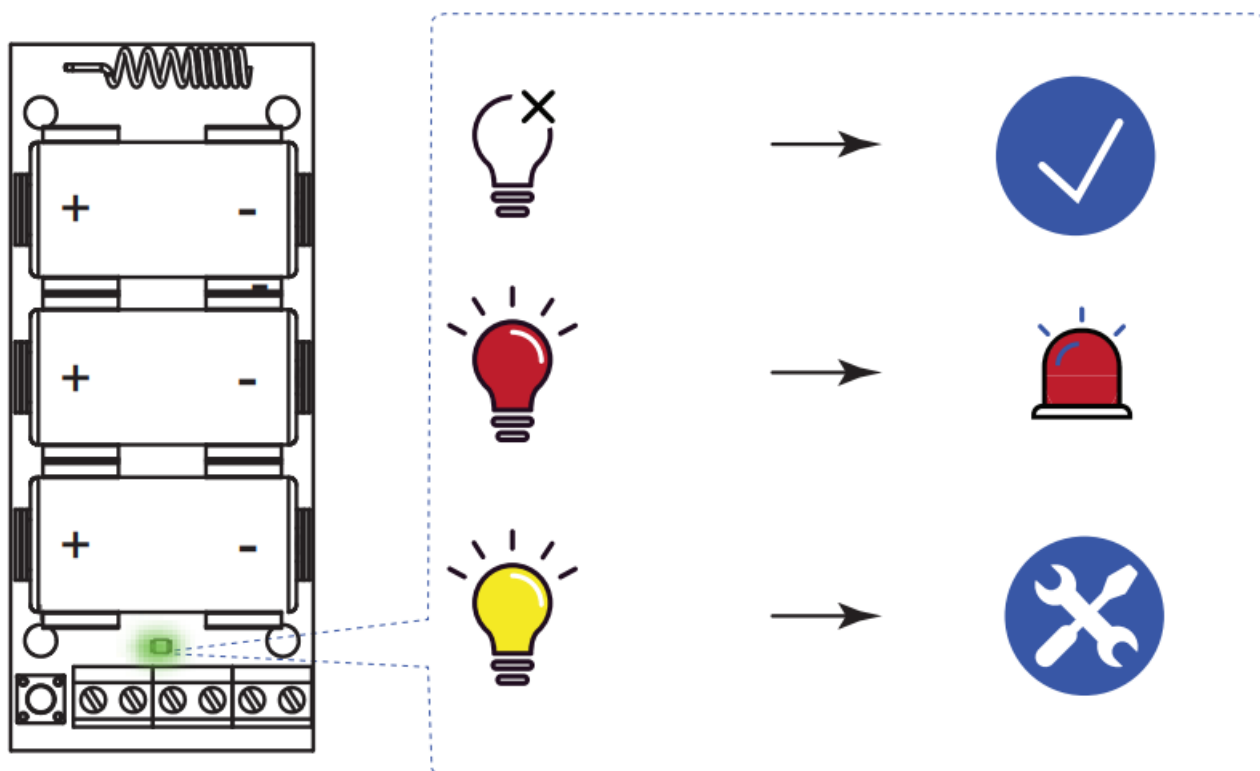
## INDICATION IN RANGE TEST MODE



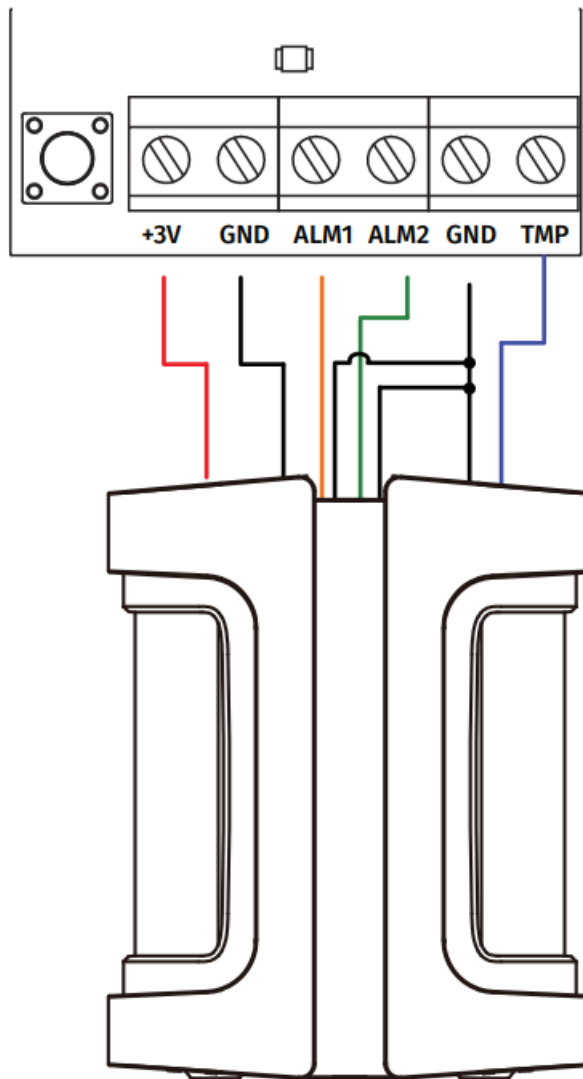
## INSTALLATION



## INDICATION



## CONNECTIONS



# U-PROX



## WIREPORT



[www.u-prox.systems](http://www.u-prox.systems)

 [https://www.u-prox.systems/doc\\_wireprt](https://www.u-prox.systems/doc_wireprt)

 [support@u-prox.systems](mailto:support@u-prox.systems)

	<p><b><a href="#">U-PROX WIREPORT Wireless Module with 3 Inputs</a></b> [pdf] User Manual WIREPORT Wireless Module with 3 Inputs, WIREPORT Wireless Module, Wireless Module, Module, WIREPORT, Security Alarm System</p>
	<p><b><a href="#">U-PROX Wireport</a></b> [pdf] User Manual Wireport</p>

References

- U [u-prox.systems/doc\\_wireprt](http://u-prox.systems/doc_wireprt)