



U-PROX Wireless Water Valve Control Device User Manual

[Home](#) » [U-PROX](#) » U-PROX Wireless Water Valve Control Device User Manual 

U-PROX Wireless Water Valve Control Device User Manual

Contents

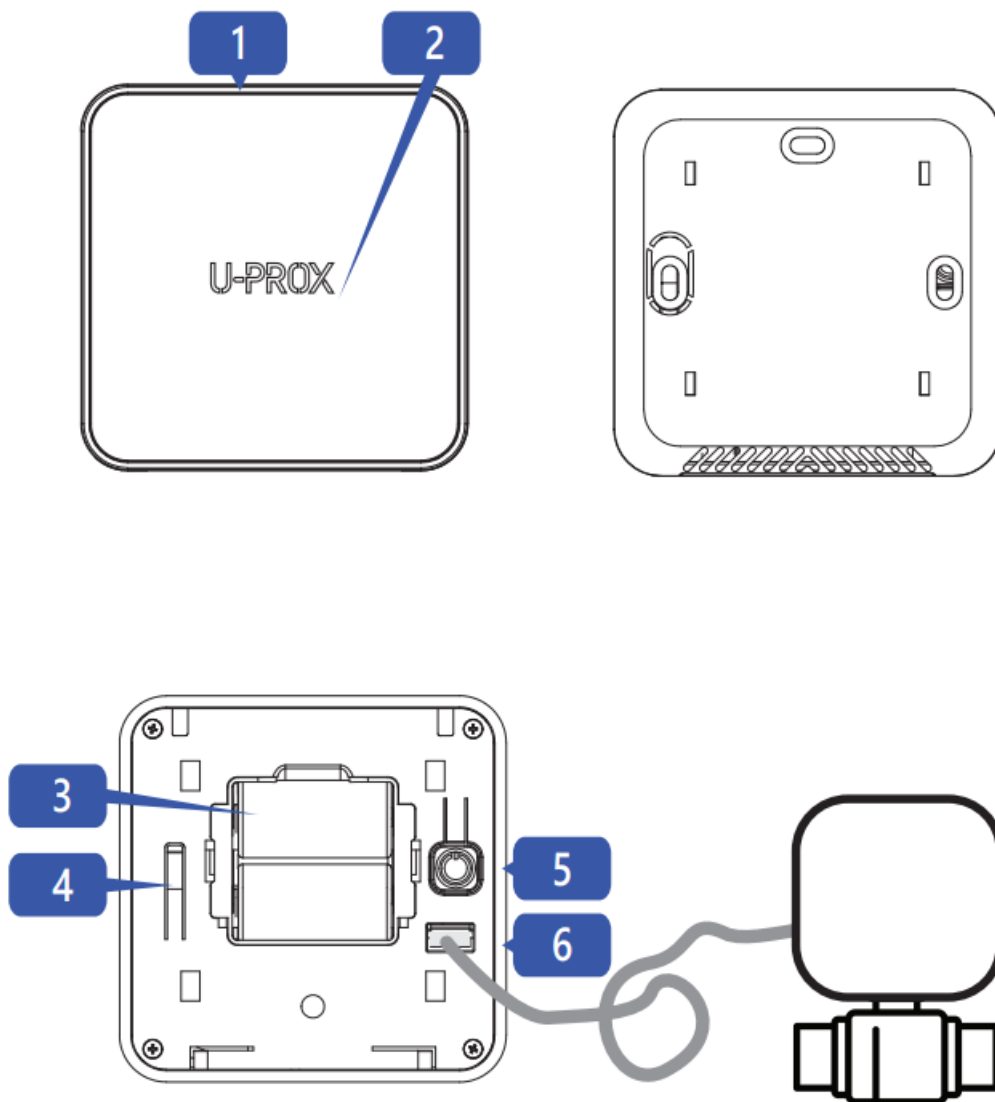
- [1 Wireless Water Valve Control Device](#)
- [2 TECHNICAL SPECIFICATIONS](#)
- [3 COMPLETE SET](#)
- [4 REGISTRATION](#)
- [5 INDICATION IN RANGE TEST MODE](#)
- [6 INSTALLATION](#)
- [7 Documents / Resources](#)
- [8 Related Posts](#)

Wireless Water Valve Control Device

WIRELESS WATER VALVE CONTROL DEVICE

Is a part of the U-Prox security alarm system
User manual

Manufacturer: Integrated Technical Vision Ltd.
Vasyl Lypkivsky str. 1, 03035, Kyiv, Ukraine



U-Prox Valve – is a wireless device designed to control a valve actuator for water supply, irrigation etc or other external devices.

The device is connected to the control panel and is configured with the U-Prox Installer mobile application.



<https://u-prox.systems/Installer>

Functional parts of the device (see picture)

1. Device case
2. Light indicator
3. Batteries
4. Tamper switch

5. On/off button
6. Connection for valve actuator

TECHNICAL SPECIFICATIONS

Output	3-pin, 12V DC
Delay	no more than 10 seconds
Power	3V, two CR123A lithium batteries included
Service life of battery	up to 3 years
Radio frequency	ISM-band wireless interface with several channels ITU region 1 (EU, UA): 868.0 to 868.6 MHz, bandwidth 100kHz, 20 mW max., up to 4800m (in line of sight) ITU region 3 (AU): 916.5 to 917 MHz, bandwidth 100kHz, 20 mW max., up to 4800m (in line of sight)
Communication	Secure two way communication, sabotage detection, key – 256 bits
Dimensions & weight	-10°C to +55°C
Operating temperature range	84.5 x 84.5 x 24.3 mm & 135 grams
Case colour	white, black

COMPLETE SET

1. U-Prox Valve;
2. Two CR123A batteries (pre-installed);
3. Quick start guide

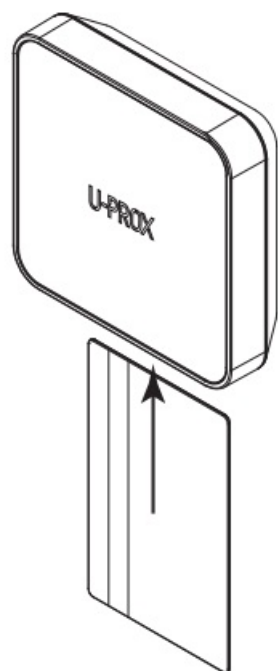
Warranty for U-Prox devices (except batteries) is valid for two years after the purchase date.

If the device operates incorrectly, please contact support@u-prox.systems at first, maybe it can be solved remotely.

CAUTION. RISK OF EXPLOSION IF BATTERY IS REPLACED BY AN INCORRECT TYPE. DISPOSE USED BATTERIES ACCORDING TO THE NATIONAL REGULATIONS WARRANTY

REGISTRATION

Use a plastic card to open the device



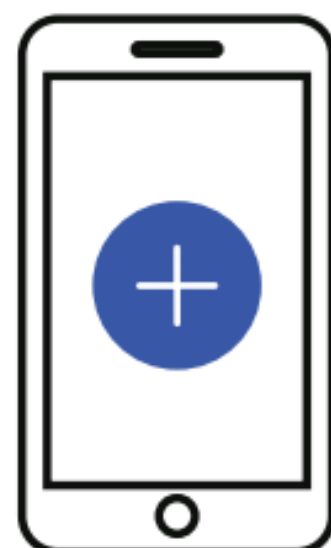
1



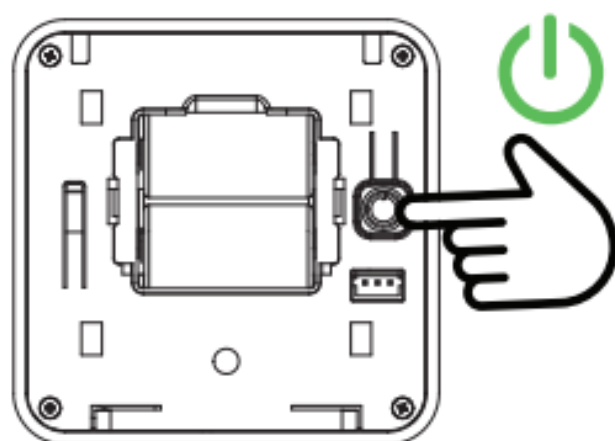
2



3

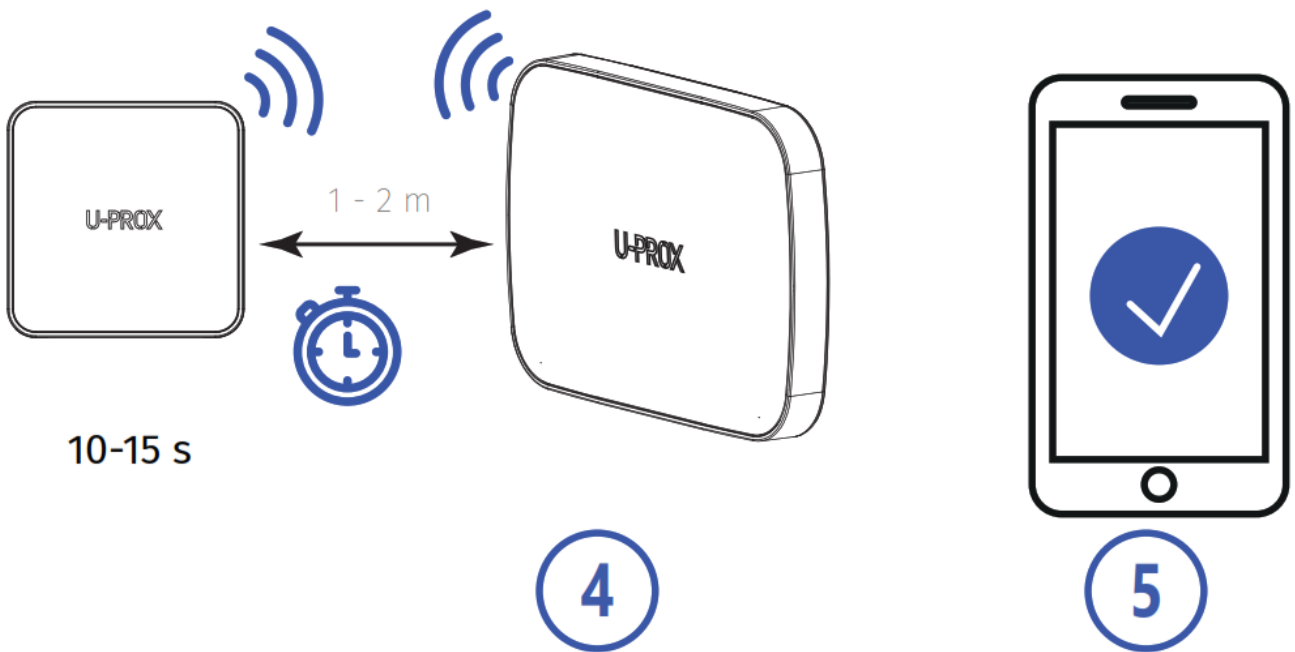


4

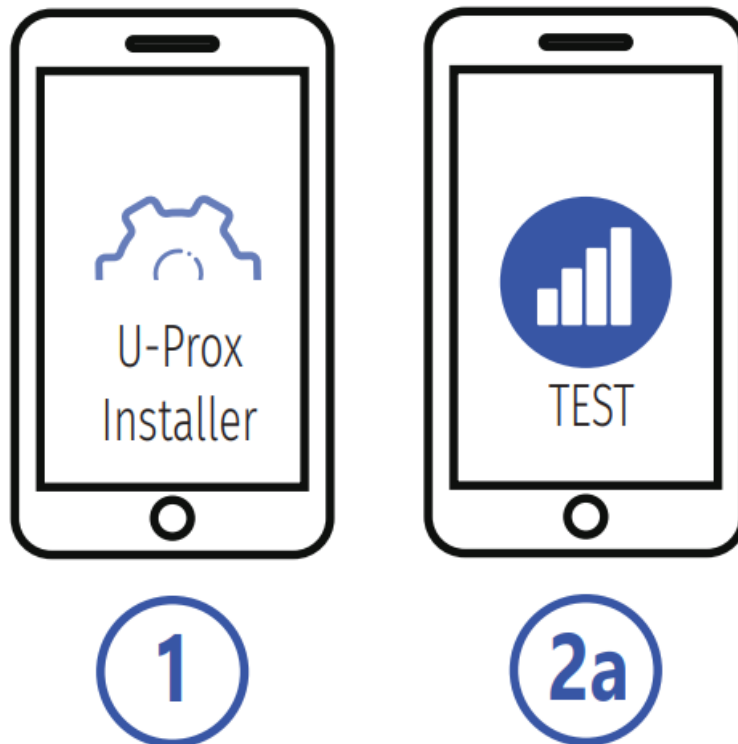


EN 2-3 s

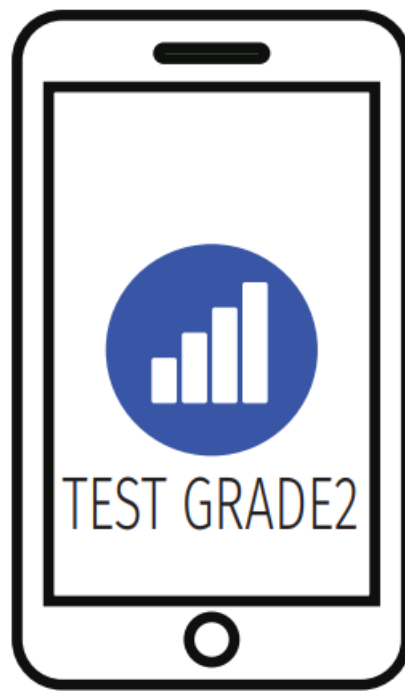
5



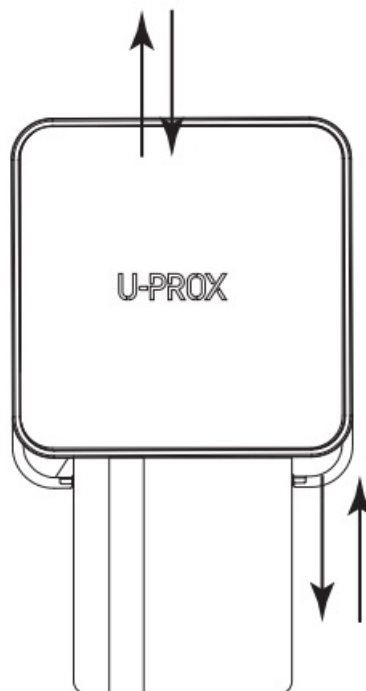
RANGE TEST FOR OPTIMAL INSTALLATION LOCATION



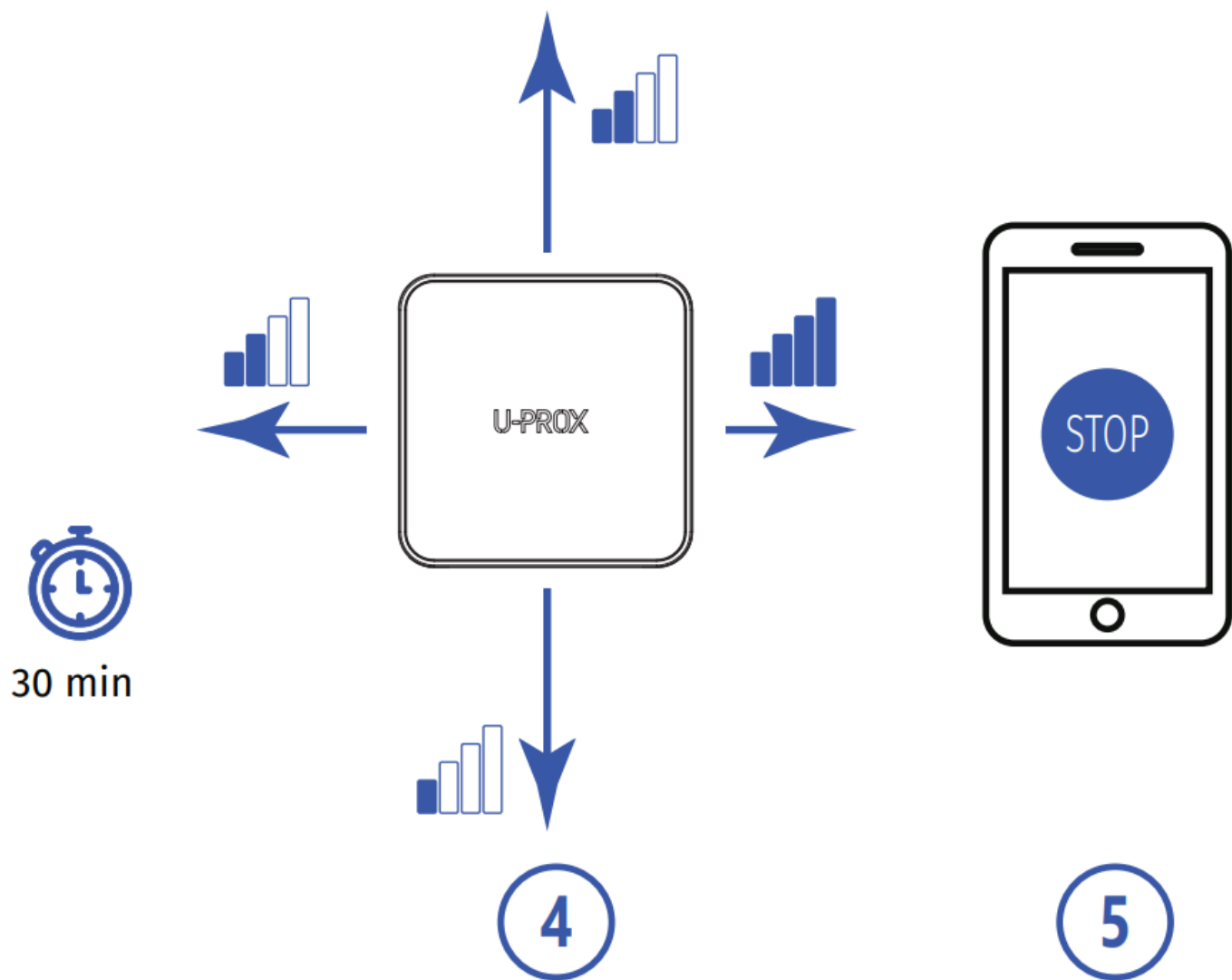
Due to Grade 2 requirement RF link works with reduction of power in 8 dB



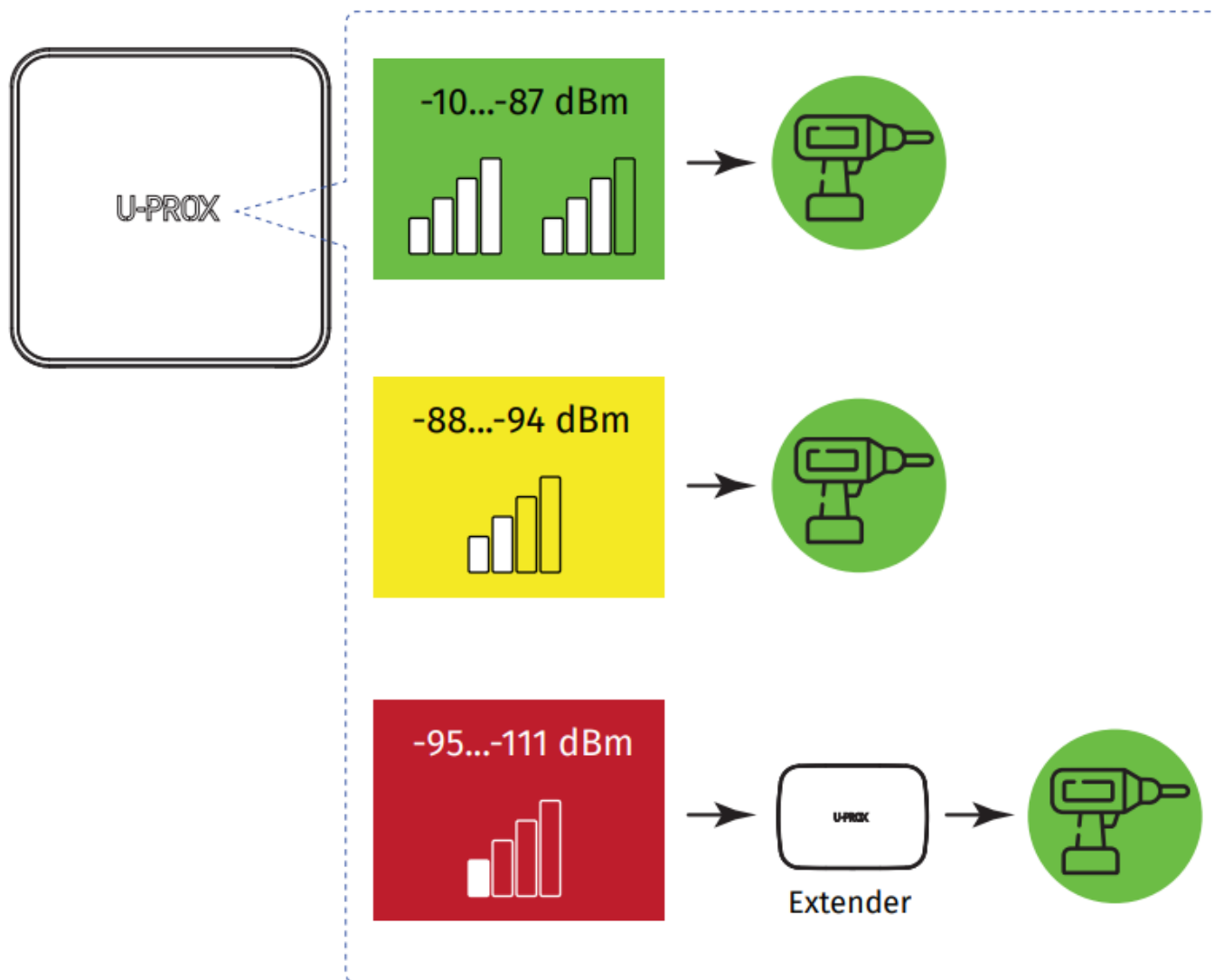
2b



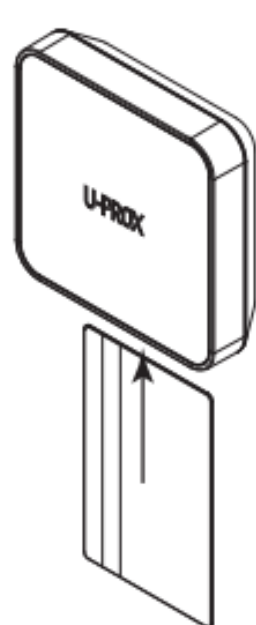
3



INDICATION IN RANGE TEST MODE



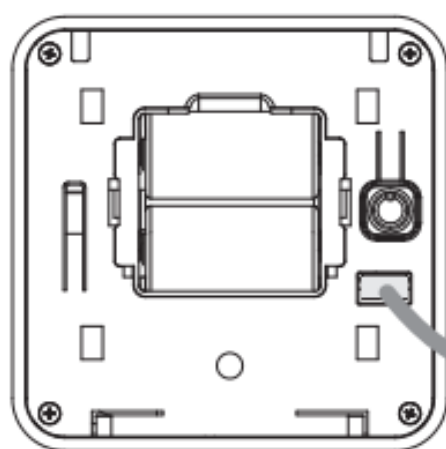
INSTALLATION



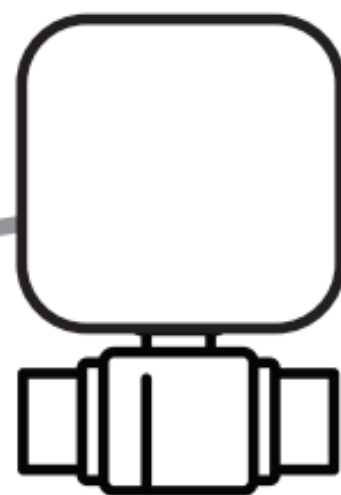
1

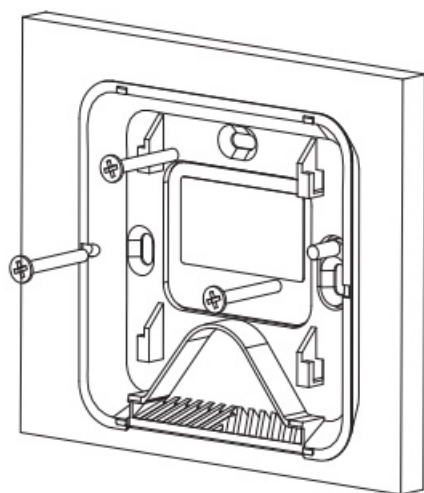


2

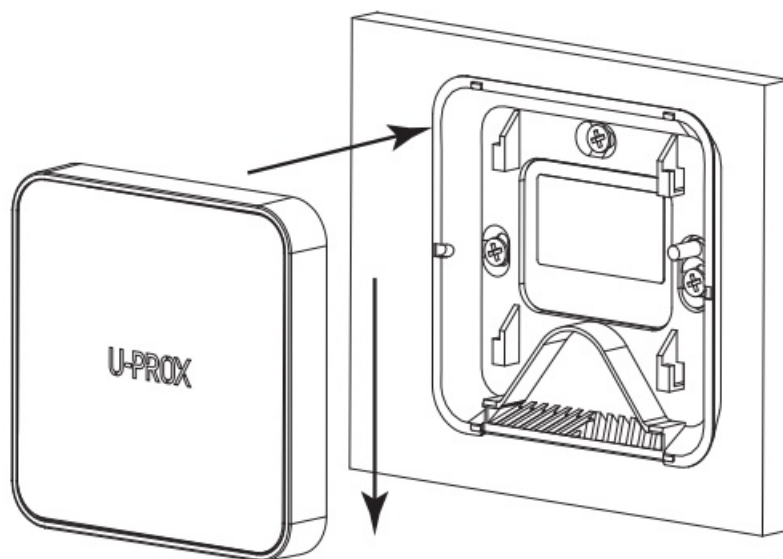


3



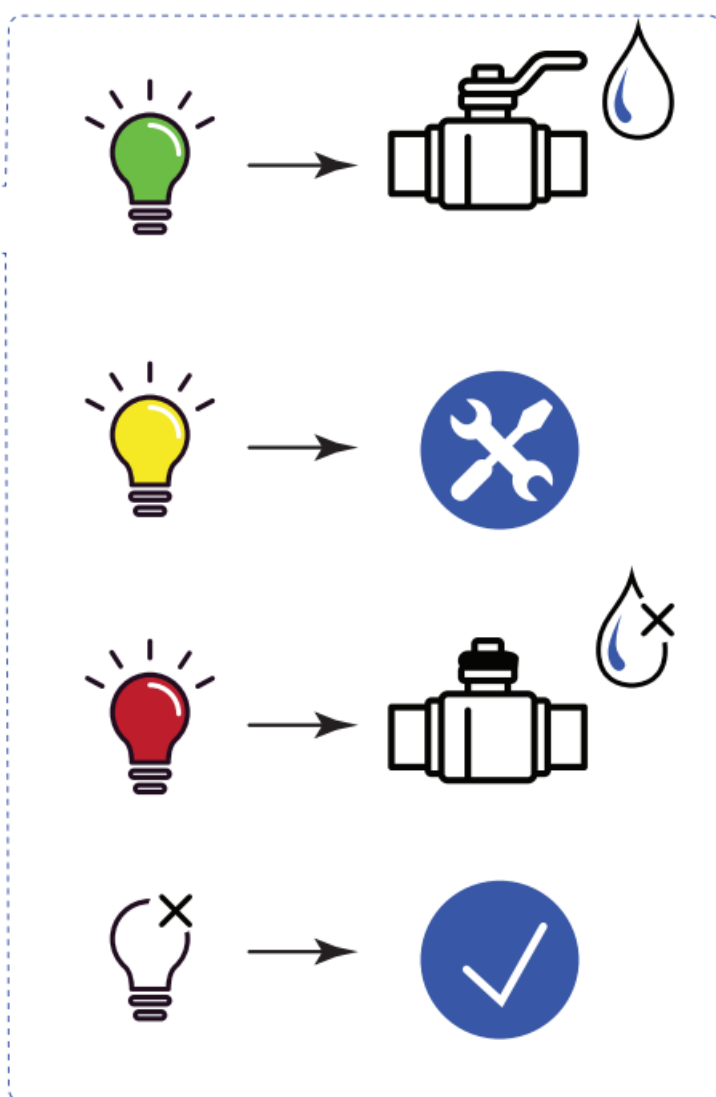
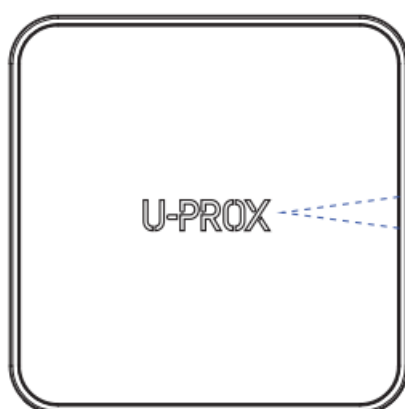


4



5

INDICATION



U-PROX



https://www.u-prox.systems/doc_valve



www.u-prox.systems/doc_valve



www.u-prox.systems



support@u-prox.systems

Documents / Resources



[U-PROX Wireless Water Valve Control Device](#) [pdf] User Manual

Wireless Water Valve Control Device, Water Valve Control Device, Valve Control Device, Control Device, Device

[Manuals+](#)