

U-PROX Wireless Relay AC Module User Manual

[Home](#) » [U-PROX](#) » U-PROX Wireless Relay AC Module User Manual 

U-PROX RELAY AC



www.u-prox.systems  support@u-prox.systems  www.u-prox.systems/doc_relac

WIRELESS RELAY AC MODULE

Is a part of the U-Prox security alarm system

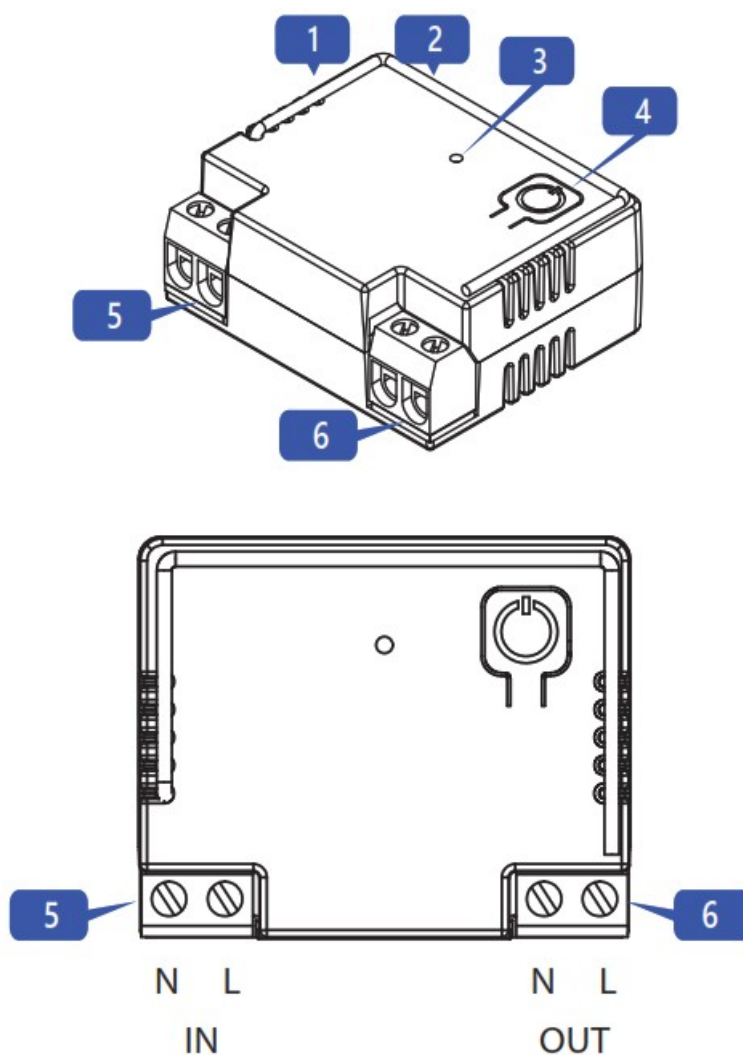
User manual

Manufacturer: Integrated Technical Vision Ltd. Vasyl Lypkivsky str. 1, 03035, Kyiv, Ukraine

Contents

- 1 Wireless Relay AC Module
- 2 TECHNICAL SPECIFICATIONS
- 3 COMPLETE SET
- 4 WARRANTY
- 5 REGISTRATION
- 6 RANGE TEST FOR OPTIMAL INSTALLATION LOCATION
- 7 INDICATION IN RANGE TEST MODE
- 8 DEVICE PLACEMENT
- 9 MANUAL RELAY ACTIVATION
- 10 Documents / Resources
- 11 Related Posts

Wireless Relay AC Module



U-Prox Relay AC – is a wireless relay which is designed to control electrical supply of appliances remotely. The device is connected to the control panel and is configured with the **U-Prox Installer** mobile application.



U-Prox Installer

<https://u-prox.systems/Installer>

Functional parts of the device (see picture)

1. Device case
2. Antenna
3. LED indicator
4. On/off button
5. Power IN contacts
6. Power OUT contacts

TECHNICAL SPECIFICATIONS

Output	OUT N, OUT L 10A @ 250V AC max
Operations	> 100 000
Power	110-250V AC, 50-60Hz
Modes	Impulse, trigger (bistable)
Impulse duration	adjustable: 0.1 ... 250 seconds
Response delay	max. 5 seconds
Radio frequency	ISM-band wireless interface with several channels ITU region 1 (EU, UA): 868.0 to 868.6 MHz, bandwidth 100kHz, 20 mW max., up to 4800m (in line of sight) ITU region 3 (AU): 916.5 to 917 MHz, bandwidth 100kHz, 20 mW max., up to 4800m (in line of sight)
Communication	Secure two way communication, sabotage detection, key – 256 bits
Dimensions & weight	-10°C to +55°C
Operating temperature range	44 x 36 x 19,4 mm & 55 grams
Case colour	white, black

COMPLETE SET

1. U-Prox Relay AC;
2. Quick start guide

WARRANTY

Warranty for U-Prox devices (except batteries) is valid for two years after the purchase date.

If the device operates incorrectly, please contact support@u-prox.systems at first, maybe it can be solved remotely.



DANGER OF ELECTROCUTION!

Failure to observe recommendations included in this manual may be dangerous or cause a violation of the law. The manufacturer will not be held responsible for any loss or damage resulting from not following the instructions of operating manual.

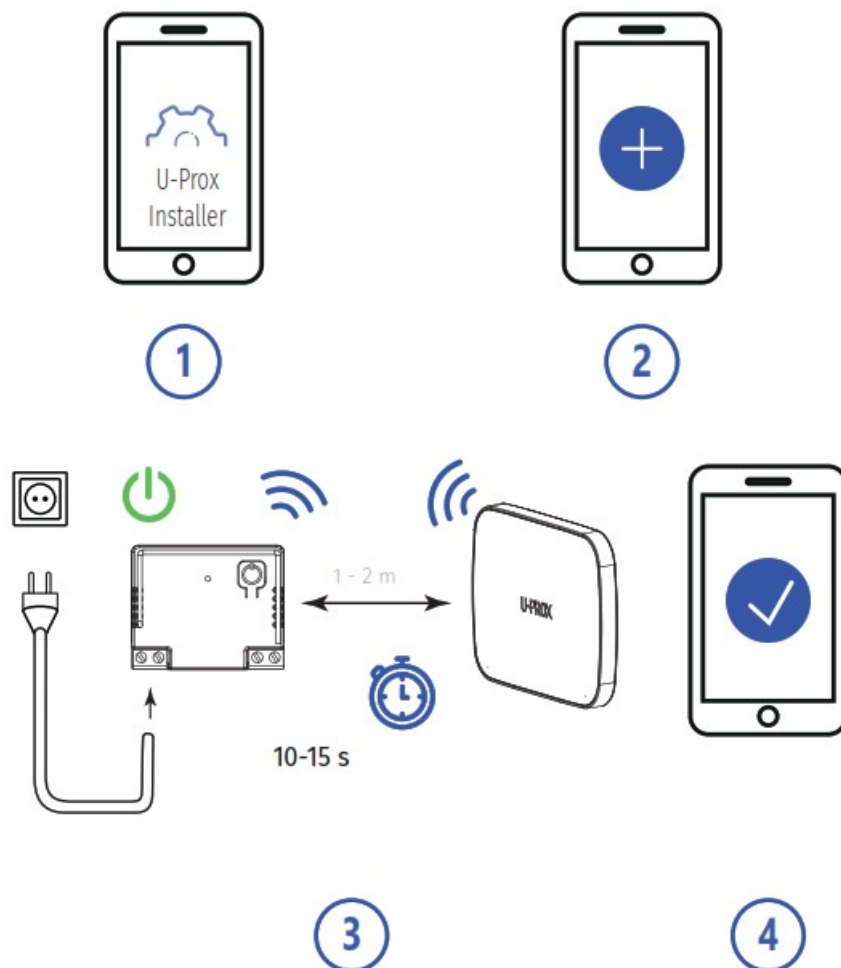
The device is designed to control other electrical devices and must be installed on a 10A line in wall switch boxes with depth not less than 60 mm or other protective cases.

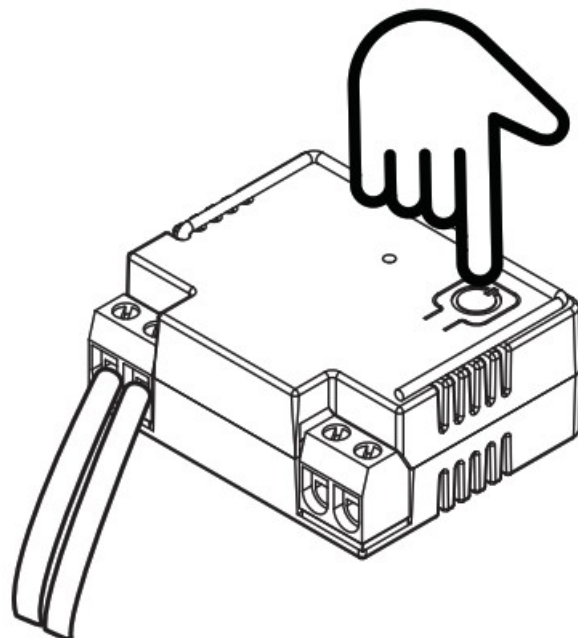
All works on the device may be performed only by a qualified and licensed electrician. Observe national regulations.

Any maintenance, introducing changes into the configuration of connections or the load must be always performed with disabled fuse or power supply.

After installation, all parts of the device, including the antenna, must be inaccessible to contact with the user.

REGISTRATION





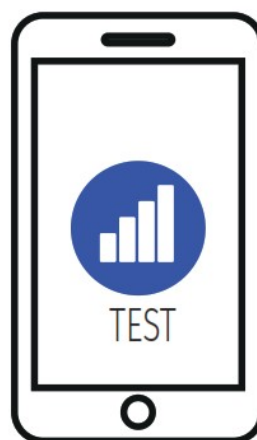
15 s

5

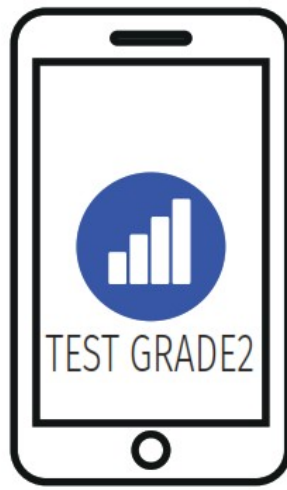
RANGE TEST FOR OPTIMAL INSTALLATION LOCATION



1

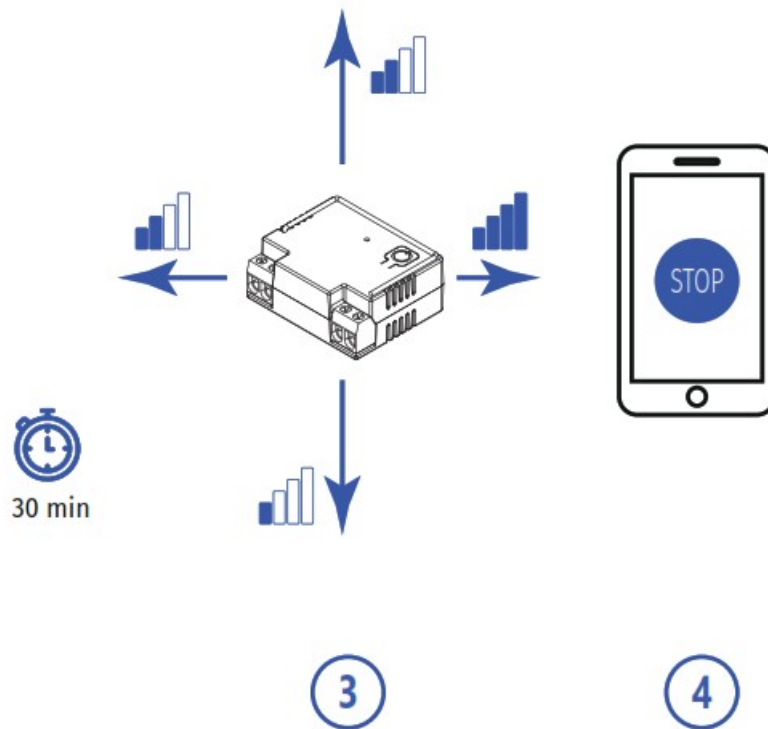


2a

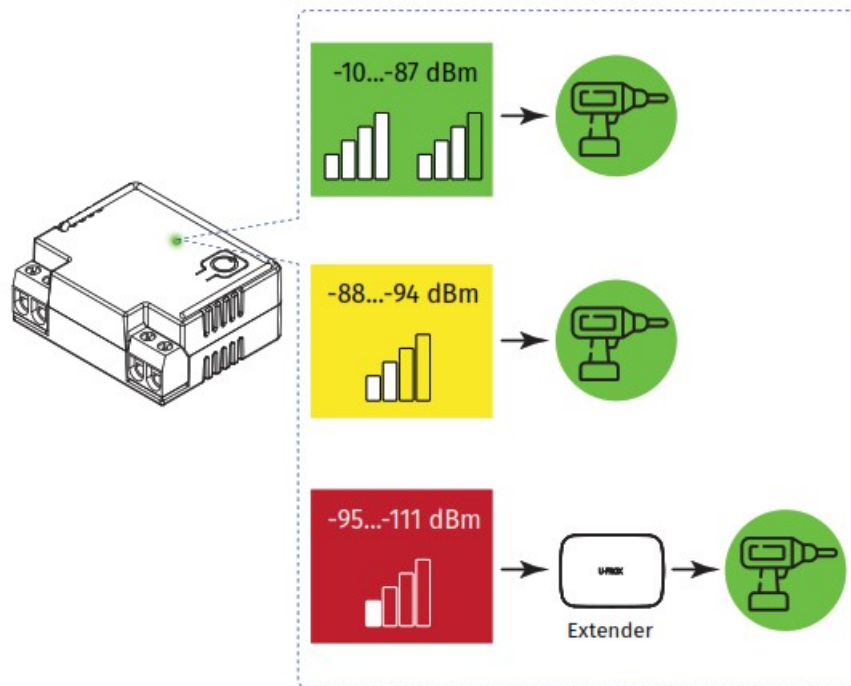


2b

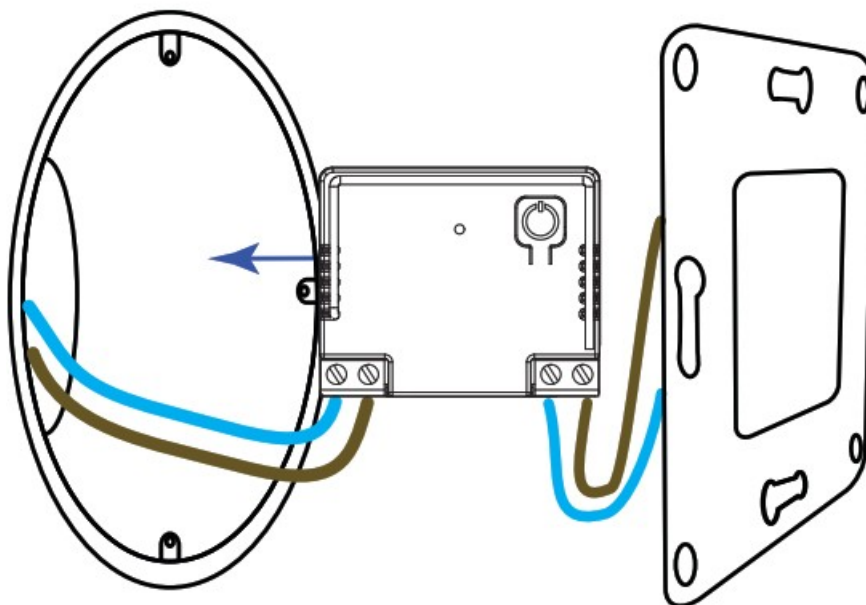
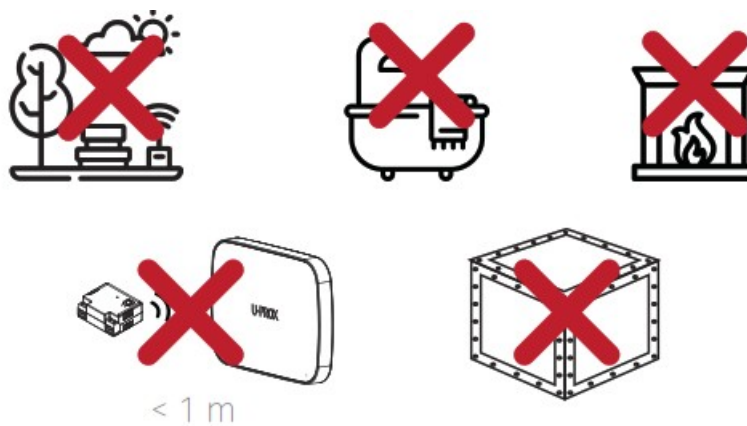
Due to Grade 2 requirement RF link works with reduction of power in 8 dB



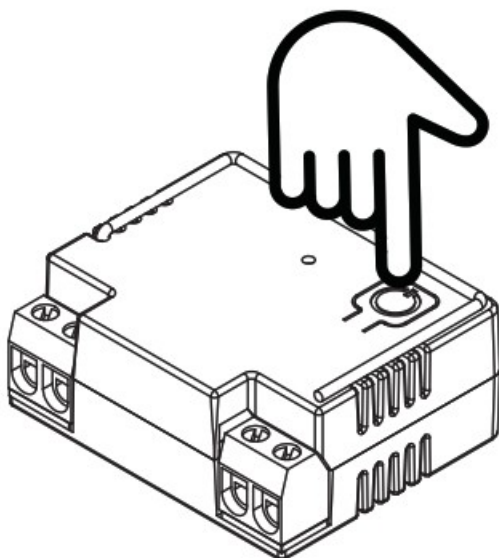
INDICATION IN RANGE TEST MODE



DEVICE PLACEMENT



MANUAL RELAY ACTIVATION



1 s

Documents / Resources



[U-PROX Wireless Relay AC Module](#) [pdf] User Manual
Wireless Relay AC Module, Wireless Relay AC, Module