



# U-PROX Wireless Key Fob User Manual

[Home](#) » [U-PROX](#) » U-PROX Wireless Key Fob User Manual 

## Contents

- [1 U-PROX Wireless Key Fob](#)
- [2 Functional parts of the device \(see picture\)](#)
- [3 TECHNICAL SPECIFICATIONS](#)
- [4 COMPLETE SET](#)
- [5 WARRANTY](#)
  - [5.1 REGISTRATION](#)
  - [5.2 INDICATION](#)
  - [5.3 ARM](#)
  - [5.4 STAY ARM / NIGHT MODE](#)
  - [5.5 DISARM](#)
  - [5.6 SOFT KEY](#)
  - [5.7 BATTERY REPLACEMENT](#)
- [6 Documents / Resources](#)
- [7 Related Posts](#)

# U-PROX

**U-PROX Wireless Key Fob**

**WIRELESS KEY FOB**

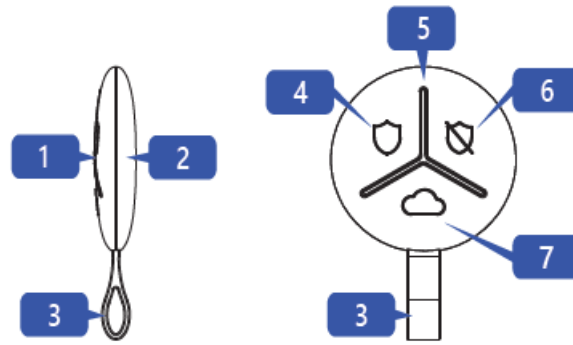
Is a part of the U-Prox security alarm system

**Manufacturer:** Integrated Technical Vision Ltd. Vasyl Lypkivsky str. 1, 03035, Kyiv, Ukraine



U-Prox Keyfob – is a wireless key fob designed to control the EN U-Prox security system. It has two buttons for arming and disarming, one soft key, and a LED indicator for interaction with the user of the alarm system. Can be used as a panic button. U-Prox Keyfob; 2. CR2032 battery (pre-installed); 3. Quick start guide The device is registered for the user of the control panel and is configured with the U-Prox Installer mobile application.

**Functional parts of the device (see picture)**



1. Top case cover
2. Bottom case cover
3. Fastening strap
4. "Arming" button
5. LED indicator
6. "Disarming" button
7. Programmable button

## TECHNICAL SPECIFICATIONS

Partitions	1
Power	3V, CR2032 lithium battery included
Service life of battery	up to 5 years
Radio frequency	ISM-band wireless interface with several channels  ITU region 1 (EU, UA): 868.0 to 868.6 MHz, bandwidth 100kHz, 10 mW max., up to 100m (in line of sight); ITU region 3 (AU): 916.5 to 917 MHz, bandwidth 100kHz, 10 mW max., up to 100m (in line of sight); Russian Federation: 868.0 to 868.2 MHz, bandwidth 100kHz, 10 mW max., up to 100m (in line of sight)
Communication	Secure two way communication, sabotage detection, key - 256 bits
Operating temperature range	-10°C to +55°C
Dimensions & weight	Ø 39 x 9 x 57 mm & 15 grams
Case colour	white, black

## COMPLETE SET

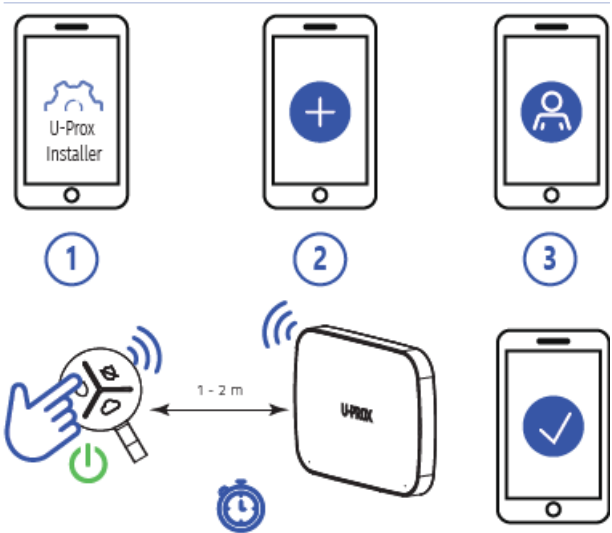
1. U-Prox Keyfob;
2. CR2032 battery (pre-installed);
3. Quick start guide

**CAUTION.** RISK OF EXPLOSION IF BATTERY IS REPLACED BY AN INCORRECT TYPE. DISPOSE USED BATTERIES ACCORDING TO THE NATIONAL REGULATIONS

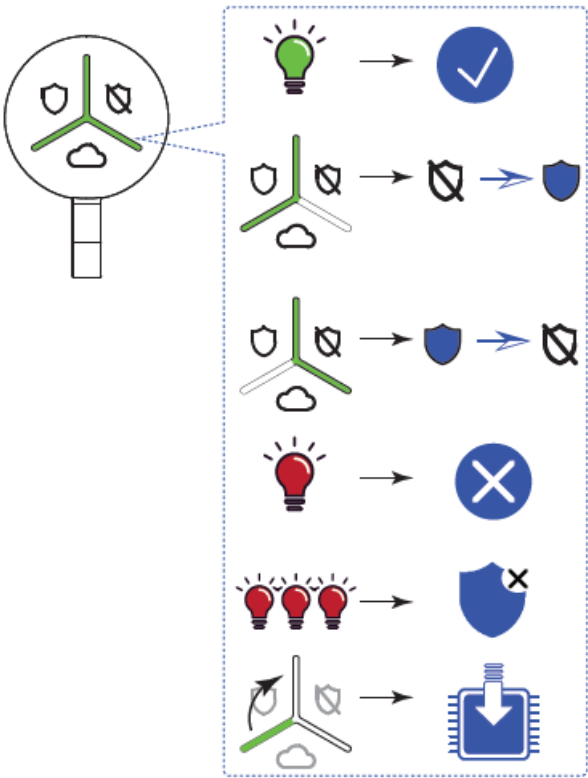
## WARRANTY

Warranty for U-Prox devices (except batteries) is valid for two years after the purchase date. If the device operates incorrectly, please contact [support@u-prox.systems](mailto:support@u-prox.systems) at first, maybe it can be solved remotely.

REGISTRATION



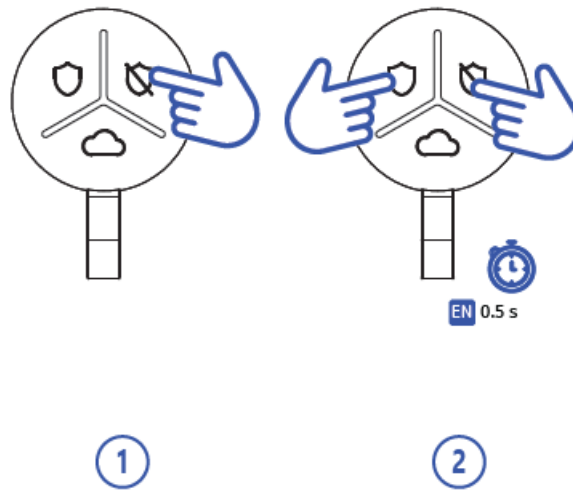
INDICATION



ARM



## STAY ARM / NIGHT MODE



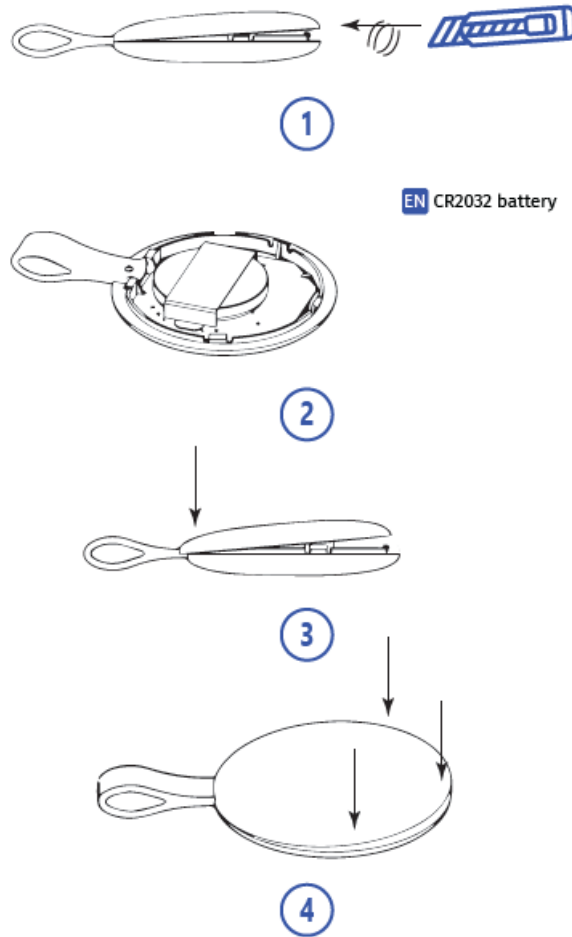
## DISARM



## SOFT KEY

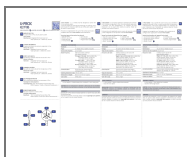


## BATTERY REPLACEMENT



- [www.u-prox.systems](http://www.u-prox.systems)
- [support@u-prox.systems](mailto:support@u-prox.systems)
- [www.u-prox.systems/doc\\_keyfob](http://www.u-prox.systems/doc_keyfob)

## Documents / Resources



**[U-PROX Wireless Key Fob](#)** [pdf] User Manual  
 Wireless Key Fob, Wireless Key Fob, Key Fob, Fob