



U-PROX

User Manual

Contents [[hide](#)]

- [1 Wireless Indoor Siren Security Alarm System](#)
- [2 TECHNICAL SPECIFICATIONS](#)
- [3 COMPLETE SET](#)
- [4 WARRANTY](#)
- [5 REGISTRATION](#)
- [6 RANGE TEST FOR OPTIMAL INSTALLATION LOCATION](#)
- [7 INDICATION IN RANGE TEST MODE](#)
- [8 INSTALLATION](#)
- [9 INDICATION](#)
- [10 AN EXTERNAL LED CONNECTION](#)
- [11 AN EXTERNAL SENSOR CONNECTION](#)
- [12 Documents / Resources](#)
 - [12.1 References](#)

Wireless Indoor Siren Security Alarm System

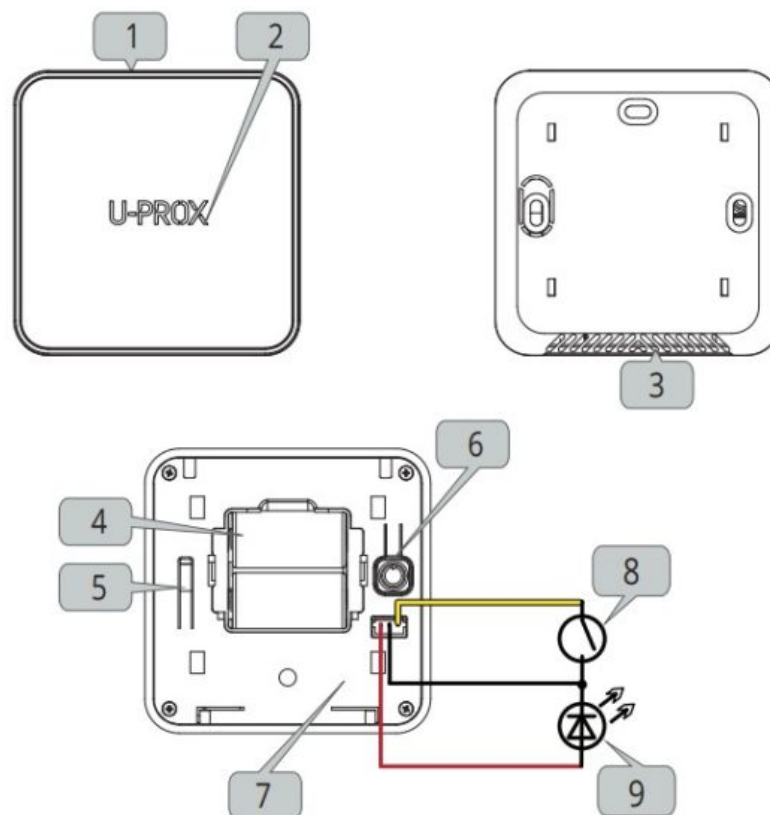


https://www.u-prox.systems/doc_siren

WIRELESS INDOOR SIREN

Is a part of the U-PROX security alarm system

Manufacturer: LLC INTEGRATED TECHNICAL VISION Mykoly Hrinchenka str. 2/1,
03038, Kyiv, Ukraine



<http://www.u-prox.systems/certificates>

LLC INTEGRATED TECHNICAL VISION declares, that the U-PROX Siren complies with the Radio Equipment Directive 2014/53/EU and with the Directive 2011/65/EU (RoHS). The original Declaration of Conformity is available on the website www.u-prox.systems in the Certificates section.

U-PROX Siren – is a wireless indoor siren designed for alarm notification when the wireless detectors of U-PROX control panel are triggered. It is installed indoors to scare

off intruders and warns the users about the danger.

The device has contacts for connecting the arming information LED and external reed switch.

The device is connected to the control panel and is configured with the U-PROX Installer mobile application.

Functional parts of the device (see picture)

1. Device case 2. Light indicator 3. Resonator openings 4. Batteries 5. Tamper 6. On/off button	7. Connector for reed switch and LED: LD contact (+ LED) GND contact (earth) DC contact (reed switch) 8. Reed switch 9. LED
--	--

TECHNICAL SPECIFICATIONS

Sound pressure level at 1 m	at least 85 dB
Delay	no more than 10 seconds
Volume levels	3, adjustable
Light indication	built-in or external indicator, adjustable
Power	3V, two CR123A lithium batteries included
Service life of battery	up to 5 years
	ISM-band wireless interface with several channels

Radio frequency	ITU region 1: 868.0 to 868.6 MHz, (EU, UA) 869.0 to 869.4 (MA), bandwidth 100kHz, 20 mW max., up to 4800m (in line of sight); ITU region 3 (AU): 916.5 to 917 MHz, bandwidth 100kHz, 20 mW max., up to 4800m (in line of sight).
Communication	Secure two way communication, sabotage detection, key – 256 bits
Operating temperature range	– 10°C to +55°C
Permissible humidity	up to 75%
Environmental class	II (according to EN 50131-1)
Security grade	2
Dtimensions & weight	84.5 x 84.5 x 24.3 mm & 134 grams
Case colour	white, black

COMPLETE SET

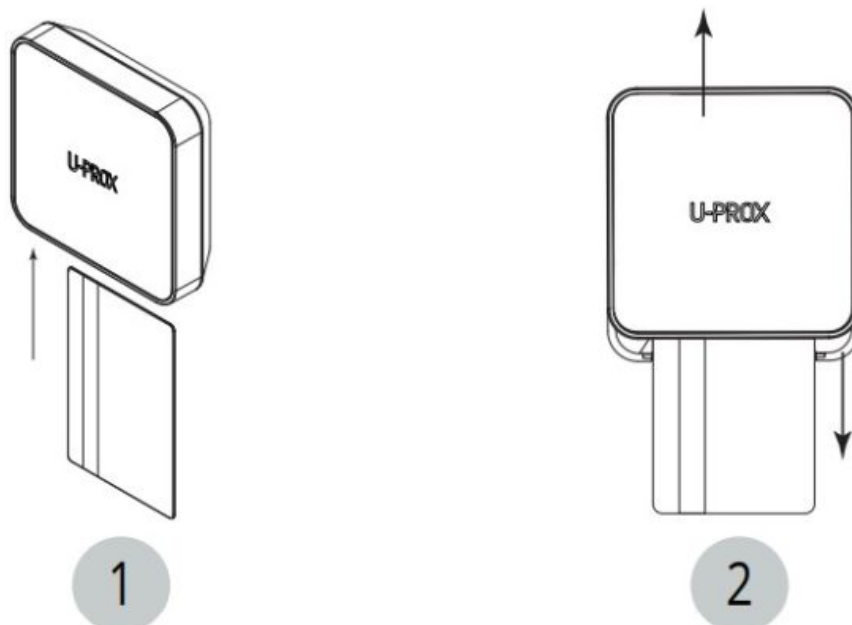
1. U-PROX Siren;
2. Two CR123A batteries (pre-installed);
3. Quick start guide

CAUTION. RISK OF EXPLOSION IF BATTERY IS REPLACED BY AN INCORRECT TYPE. DISPOSE USED BATTERIES ACCORDING TO THE NATIONAL REGULATIONS

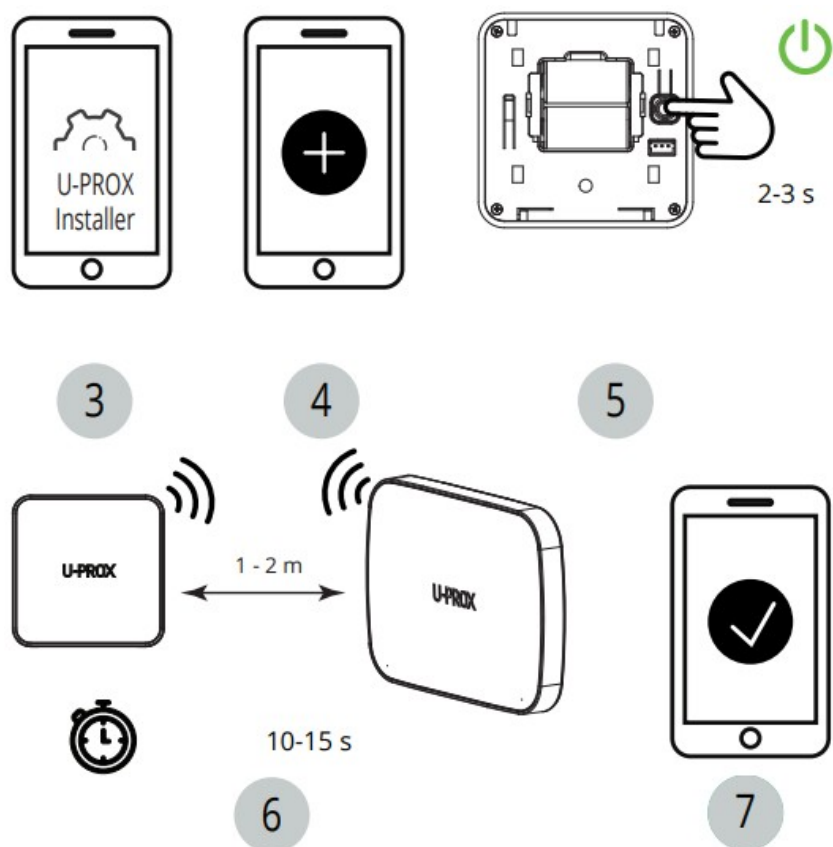
WARRANTY

Warranty for U-PROX devices (except batteries) is valid for two years after the purchase date. If the device operates incorrectly, please contact support@u-prox.systems at first, maybe it can be solved remotely.

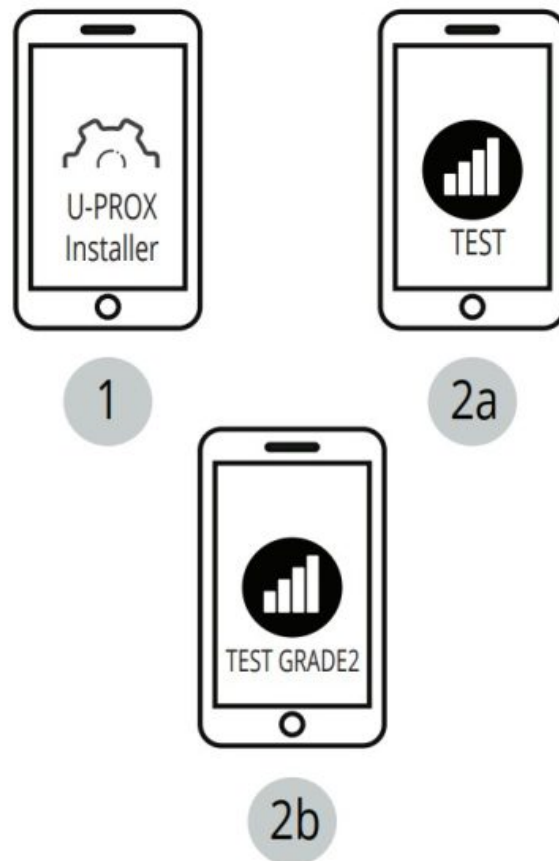
REGISTRATION



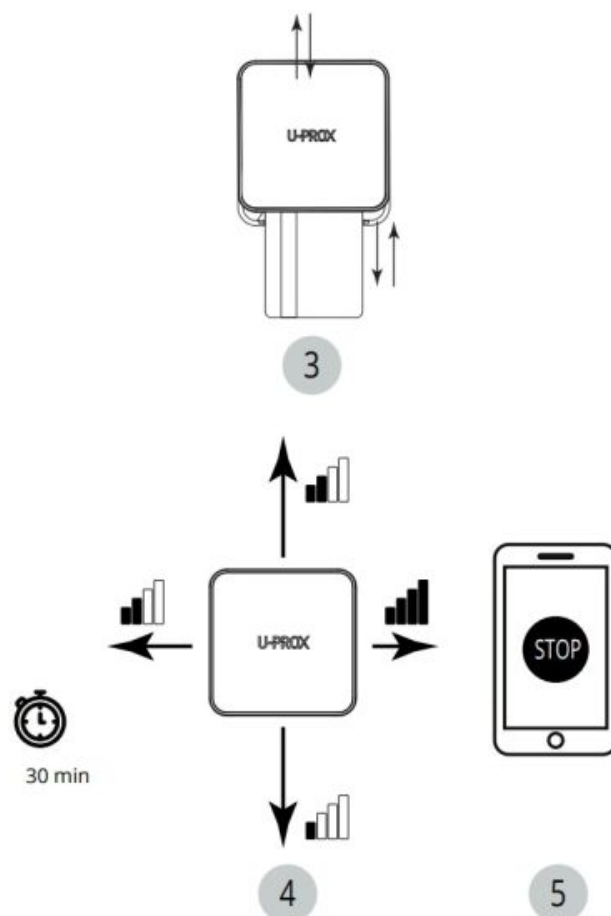
Use a plastic card to open the device



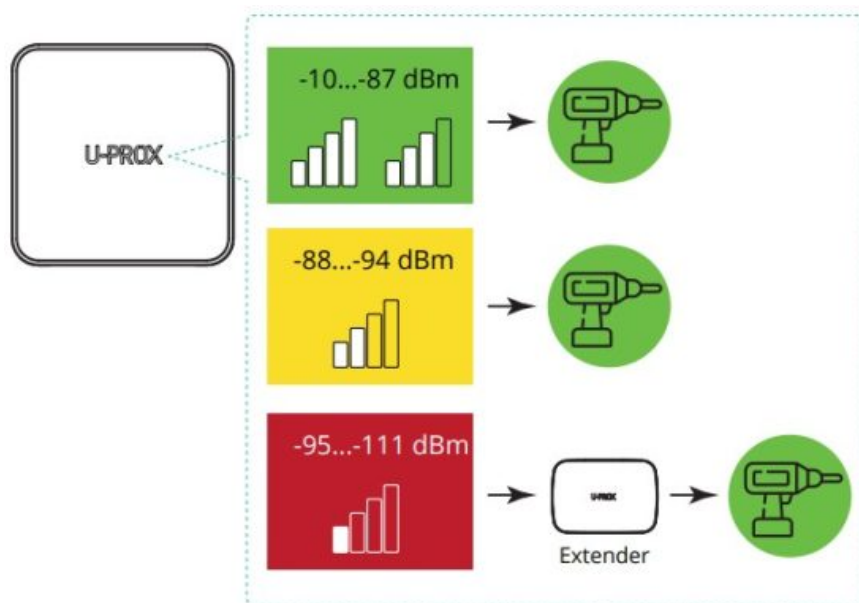
RANGE TEST FOR OPTIMAL INSTALLATION LOCATION



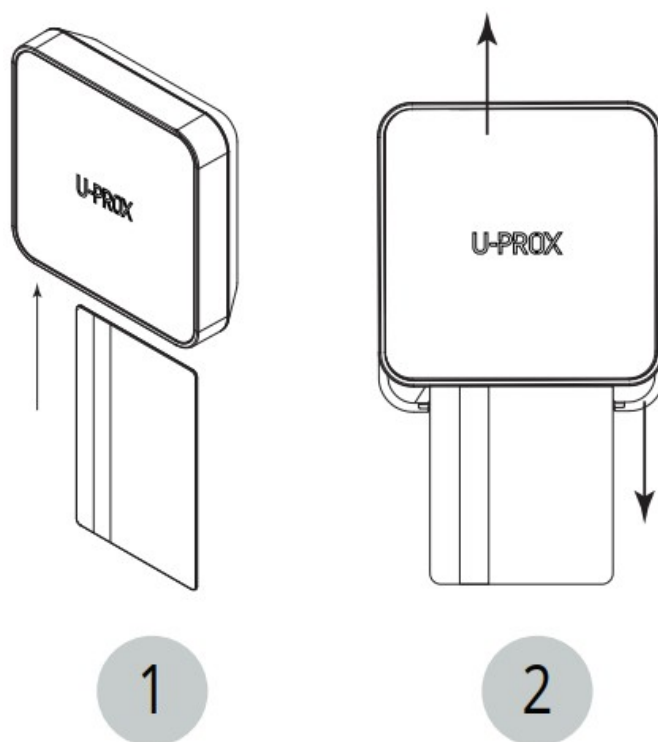
Due to Grade 2 requirement RF link works with reduction of power in 8 dB



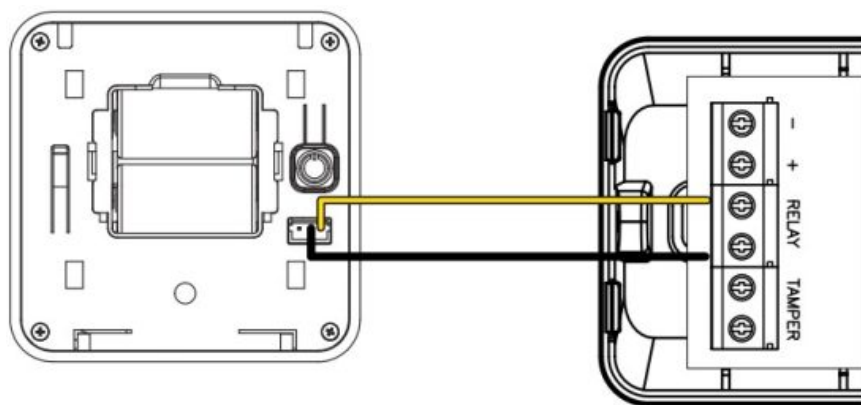
INDICATION IN RANGE TEST MODE



INSTALLATION



Use a plastic card to open the device



NC – normal closed

U-PROX

Documents / Resources

	U-PROX Wireless Indoor Siren Security Alarm System [pdf] User Manual Wireless Indoor Siren Security Alarm System, Indoor Siren Security Alarm System, Siren Security Alarm System, Security Alarm System, Alarm System
--	---

References

- [User Manual](#)

U-PROX

alarm system, Indoor Siren Security Alarm System, Security Alarm System, Siren Security Alarm System, U-PROX, Wireless Indoor Siren Security Alarm System

Leave a comment

Your email address will not be published. Required fields are marked *

Comment *

Name

Email

Website

☐ Save my name, email, and website in this browser for the next time I comment.

Post Comment

Search:

e.g. whirlpool wrf535swhz

Search

[Manuals+](#) | [Upload](#) | [Deep Search](#) | [Privacy Policy](#) | [@manuals.plus](#) | [YouTube](#)

This website is an independent publication and is neither affiliated with nor endorsed by any of the trademark owners. The "Bluetooth®" word mark and logos are registered trademarks owned by Bluetooth SIG, Inc. The "Wi-Fi®" word mark and logos are registered trademarks owned by the Wi-Fi Alliance. Any use of these marks on this website does not imply any affiliation with or endorsement.