

U-PROX WDC Plus Wireless Magnetic Door Window Contact Detector



# U-PROX WDC Plus Wireless Magnetic Door Window Contact Detector User Manual

[Home](#) » [U-PROX](#) » U-PROX WDC Plus Wireless Magnetic Door Window Contact Detector User Manual 

## Contents

- [1 U-PROX WDC Plus Wireless Magnetic Door Window Contact Detector User Manual](#)
- [2 Product Information](#)
- [3 Product Usage Instructions](#)
- [4 TECHNICAL SPECIFICATIONS](#)
- [5 COMPLETE SET](#)
- [6 WARRANTY](#)
- [7 REGISTRATION](#)
- [8 RANGE TEST FOR OPTIMAL INSTALLATION LOCATION](#)
- [9 INDICATION IN RANGE TEST MODE](#)
- [10 INSTALLATION](#)
- [11 AN EXTERNAL SENSOR CONNECTION](#)
- [12 Documents / Resources](#)
  - [12.1 References](#)

# U-PROX

**U-PROX WDC Plus Wireless Magnetic Door Window Contact Detector User Manual**



## Product Information

### Specifications

- **Zones:** 2, adjustable
- **Functions:** Built-in reed switch, external input with pulse counter, external input, tilt sensor
- **Reed Switch:** Threshold 7-15 mm, operations > 1,000,000
- **Power Output:** 3V, 1 mA max.
- **Power:** 3V, CR123A lithium battery included
- **Service Life of Battery:** Up to 5 years (without AUX consumption)
- **Radio Frequency:** ISM-band wireless interface with several channels
- **Communication:** Secure two-way communication, sabotage detection, key – 256 bits
- **Permissible Humidity:** Up to 95%
- **Environmental Class:** III (according to EN 50131-1)
- **Security Grade:** 2
- **Dimensions & Weight:** 85 x 20.9 x 20.4 mm & 66 grams
- **Magnet Dimensions:** 85 x 11 x 6mm
- **Case Color:** White, dark brown, black

### Product Usage Instructions

## **Installation and Setup**

1. Open the U-Prox WDC Plus package and ensure all components are included.
2. Select a suitable location on the door or window frame to install the detector.
3. Mount the detector using the provided mounting kit.
4. Insert the CR123A battery into the device.
5. Download and install the U-Prox Installer mobile application on your smartphone.
6. Follow the in-app instructions to configure the detector to your security alarm system.

## **Usage**

The U-Prox WDC Plus is designed to monitor the status of windows or doors. It can detect open/close events and changes in inclination angle.

## **Maintenance**

Check the battery status regularly and replace it when necessary to ensure continuous operation of the detector.

## **Frequently Asked Questions (FAQ)**

- Q: How many security zones can the U-Prox WDC Plus control?  
A: The device can control up to 2 security zones.
- Q: What is the communication range of the device?  
A: The device has a communication range of up to 4800m in line of sight, depending on the region.

## **WIRELESS MAGNETIC DOOR/WINDOW CONTACT WITH TILT DETECTION**

Is a part of the U-Prox security alarm system User manual

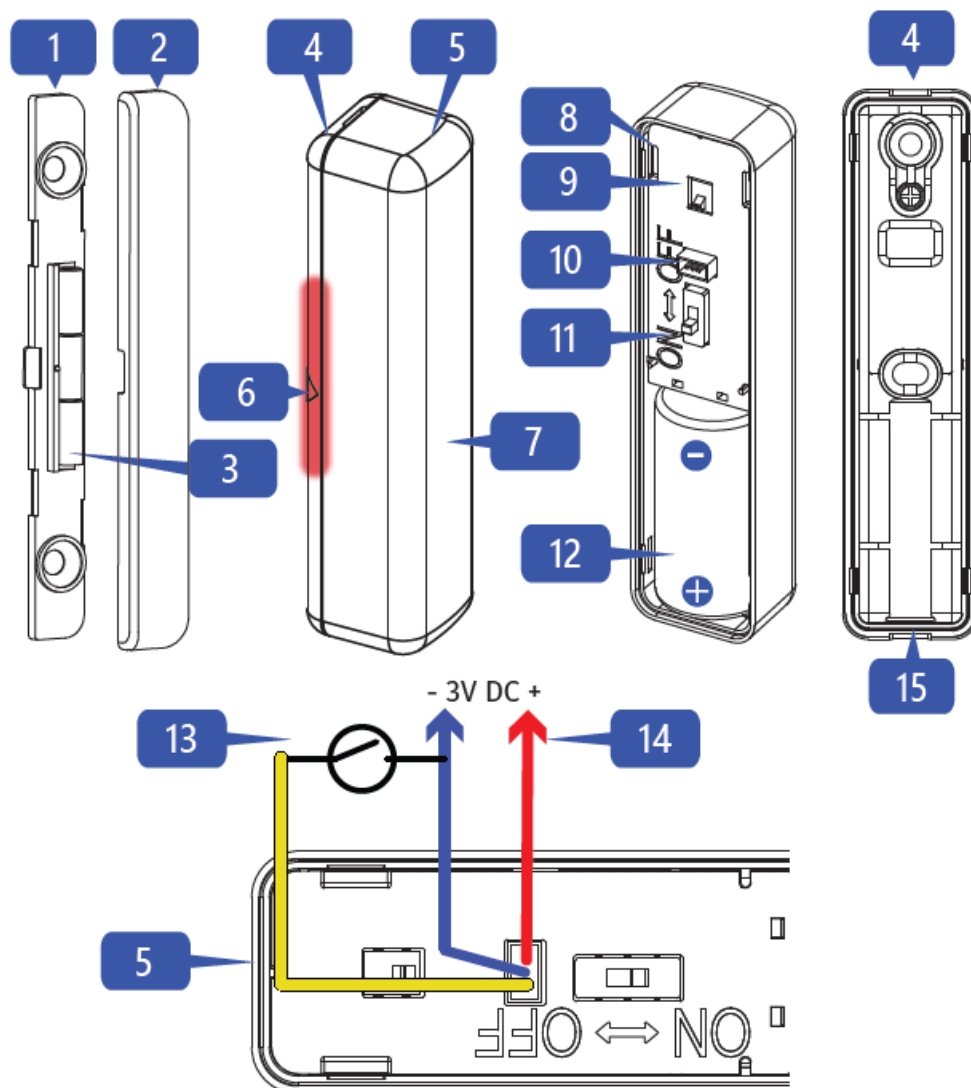
### **Manufacturer:**

Integrated Technical Vision Ltd. Vasyl Lypkivsky str. 1, 03035, Kyiv, Ukraine

- U-Prox WDC Plus – is a wireless detector with magnetic contact, EN pulse counter, and tilt sensor. The device is designed to control the status of structural elements – windows or doors (open/close/change of inclination angle).
- The detector controls up to 2 security zones. The device sends an alarm notification to the alarm center U-Prox security alarm system.
- The detector has a connector for connecting external sensors, e.g. reed switch.
- The device is connected to the control panel and is connected with the U-Prox Installer mobile application.



Functional parts of the device (see picture)



1. The bottom plate of magnet case
2. Magnet case cover
3. Neodymium magnet
4. Bottom plate of the detector case
5. Detector case top cover with the device

6. Magnet position marks
7. LED indicator
8. Plastic protector of device board
9. Tamper switch
10. Connector for external sensor: GND contact (ground, blue) DC contact (sensor, yellow)
11. On/off button
12. Battery CR123A
13. External sensor (reed switch)
14. AUX – power output
15. Rubber seal

## TECHNICAL SPECIFICATIONS

Zones	2, adjustable
Functions	built-in reed switch, external input with pulse counter, external input, tilt sensor
Reed switch	threshold 7-15 mm, operations > 1 000 000
Power output	3V, 1 mA max.
Power	3V, CR123A lithium battery included
Service life of battery	up to 5 years (without AUX consumption)
Radio frequency	ISM-band wireless interface with several channels  ITU region 1 (EU, UA): 868.0 to 868.6 MHz, bandwidth 100kHz, 20 mW max., up to 4800m (in line of sight) ITU region 3 (AU): 916.5 to 917 MHz, bandwidth 100kHz, 20 mW max., up to 4800m (in line of sight)
Communication	Secure two way communication, sabotage detection, key - 256 bits
Operating temperature range	-20°C to +50°C
Permissible humidity	up to 95%
Environmental class	III (according to EN 50131-1)
Security grade	2
Dimensions & weight	85 x 20,9 x 20,4 mm & 66 gram
Magnet dimensions	85 x 11 x 6 mm
Case colour	white, dark brown, black

## COMPLETE SET

1. U-Prox WDC Plus;
2. Magnet;
3. CR123A battery (pre-installed);
4. Mounting kit;
5. Quick start guide

## CAUTION

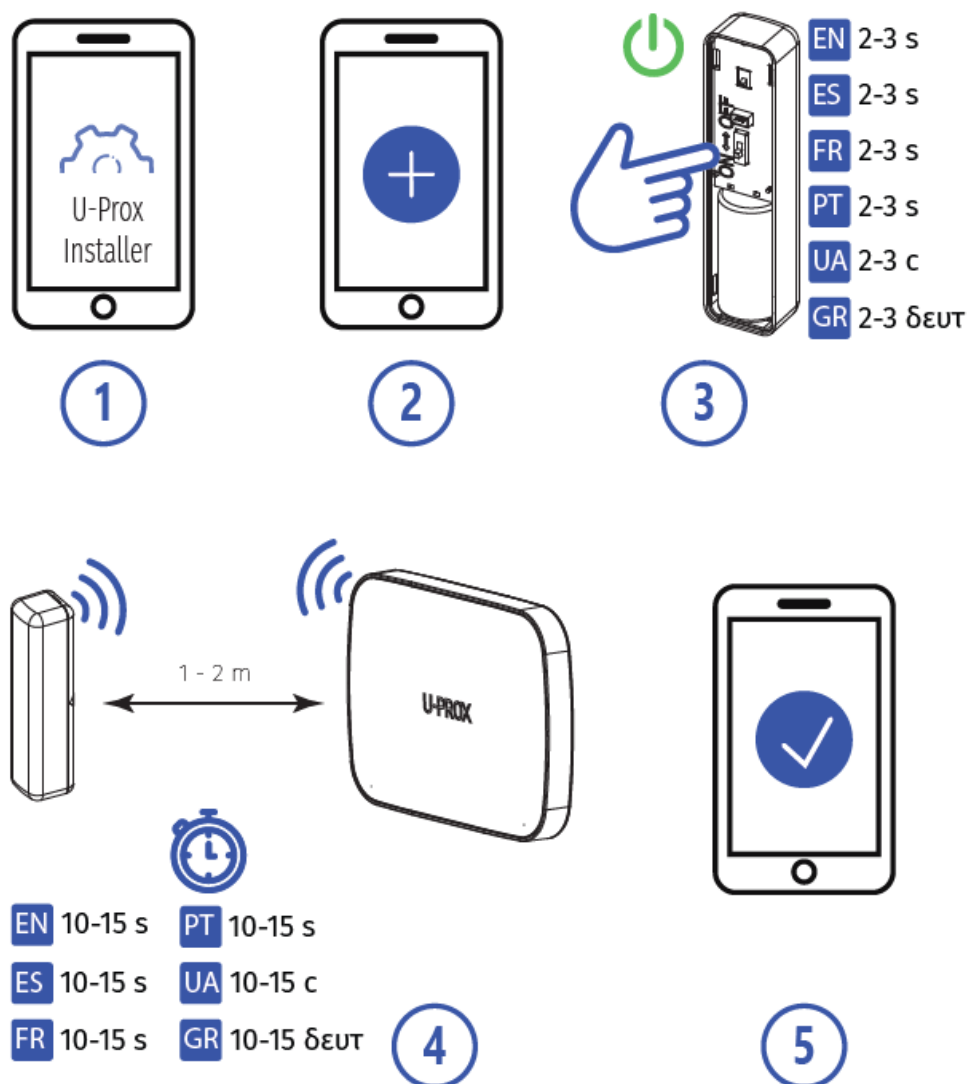
RISK OF EXPLOSION IF BATTERY IS REPLACED BY AN INCORRECT TYPE. DISPOSE USED BATTERIES ACCORDING TO THE NATIONAL REGULATIONS

## WARRANTY

Warranty for U-Prox devices (except batteries) is valid for two years after the purchase date.

If the device operates incorrectly, please contact [support@u-prox.systems](mailto:support@u-prox.systems) first, maybe it can be solved remotely.

## REGISTRATION

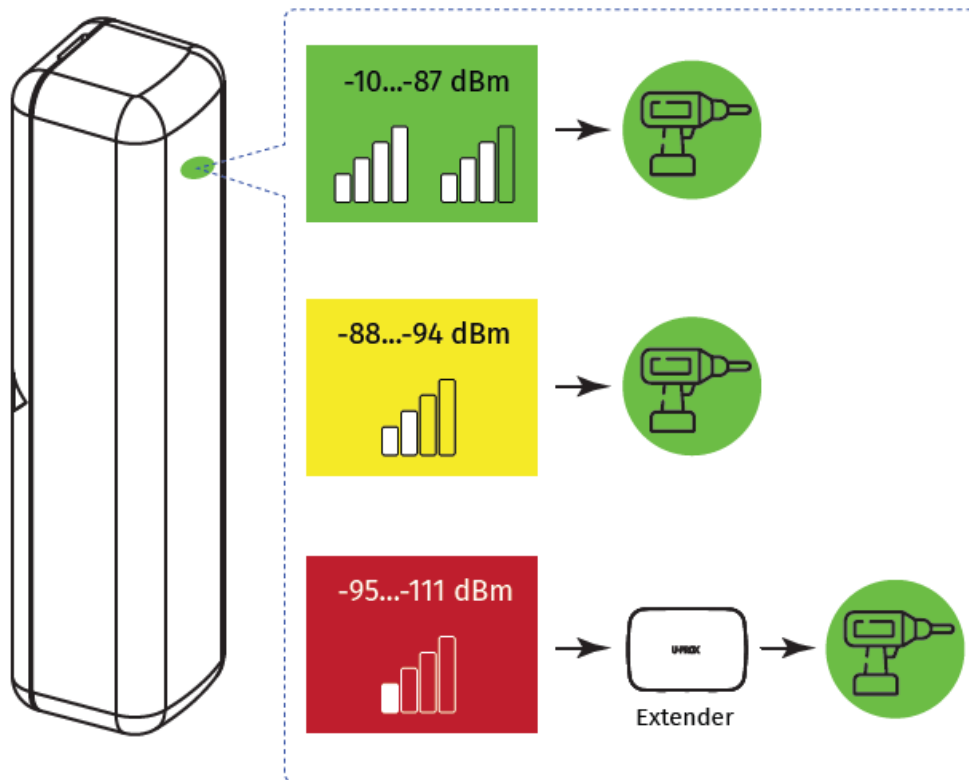


## RANGE TEST FOR OPTIMAL INSTALLATION LOCATION

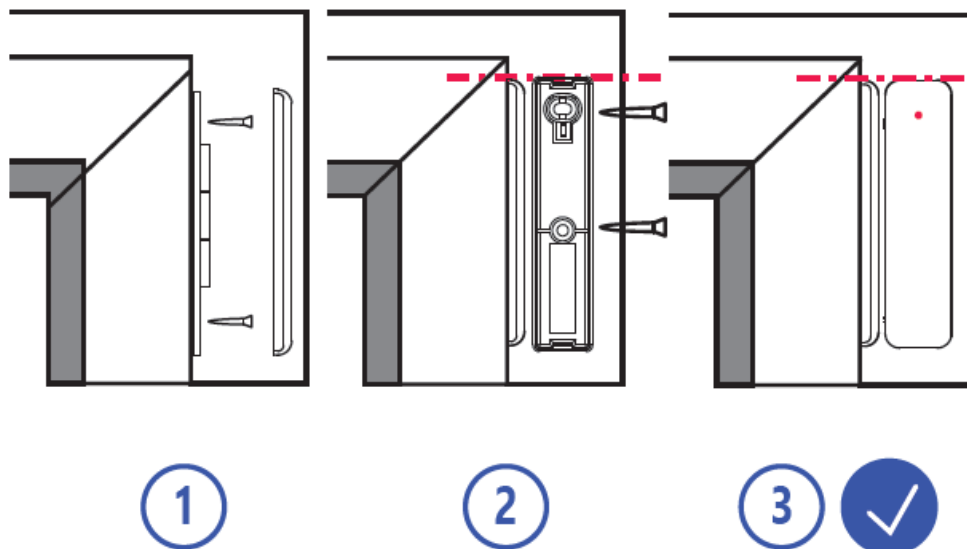


Due to the Grade 2 requirement, RF link works with a reduction of power in 8 dB

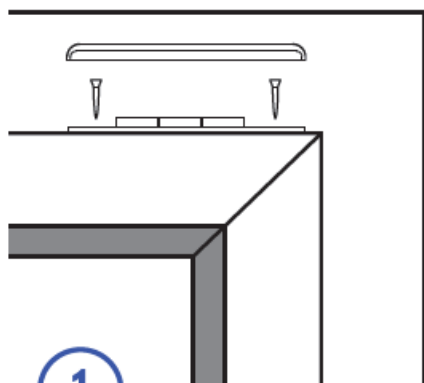
## INDICATION IN RANGE TEST MODE



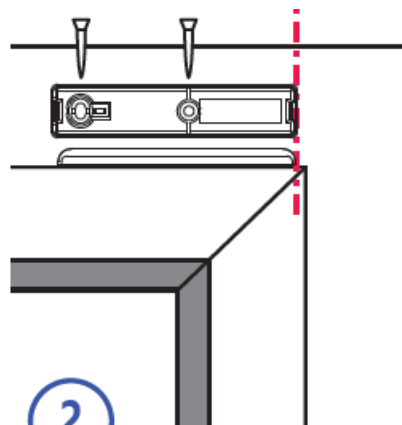
## INSTALLATION



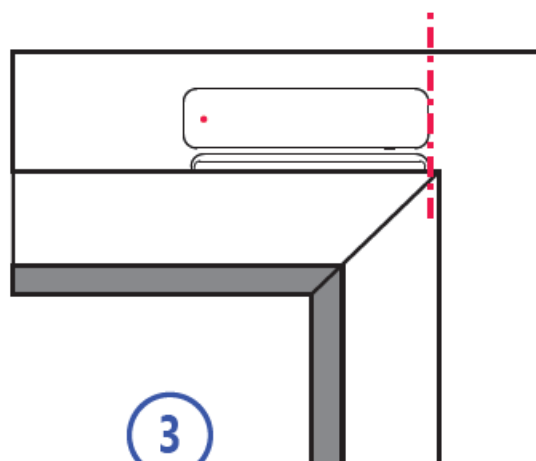




1

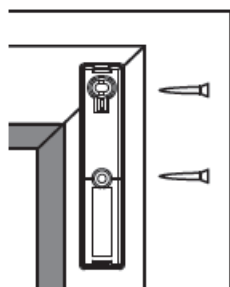


2

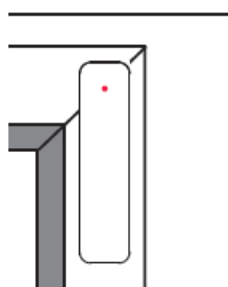


3

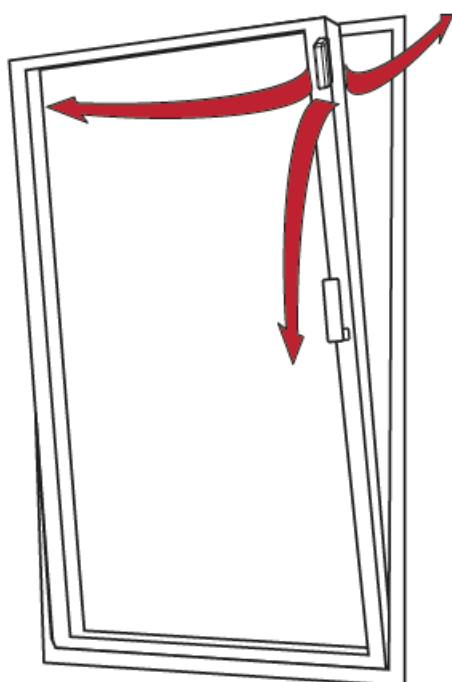




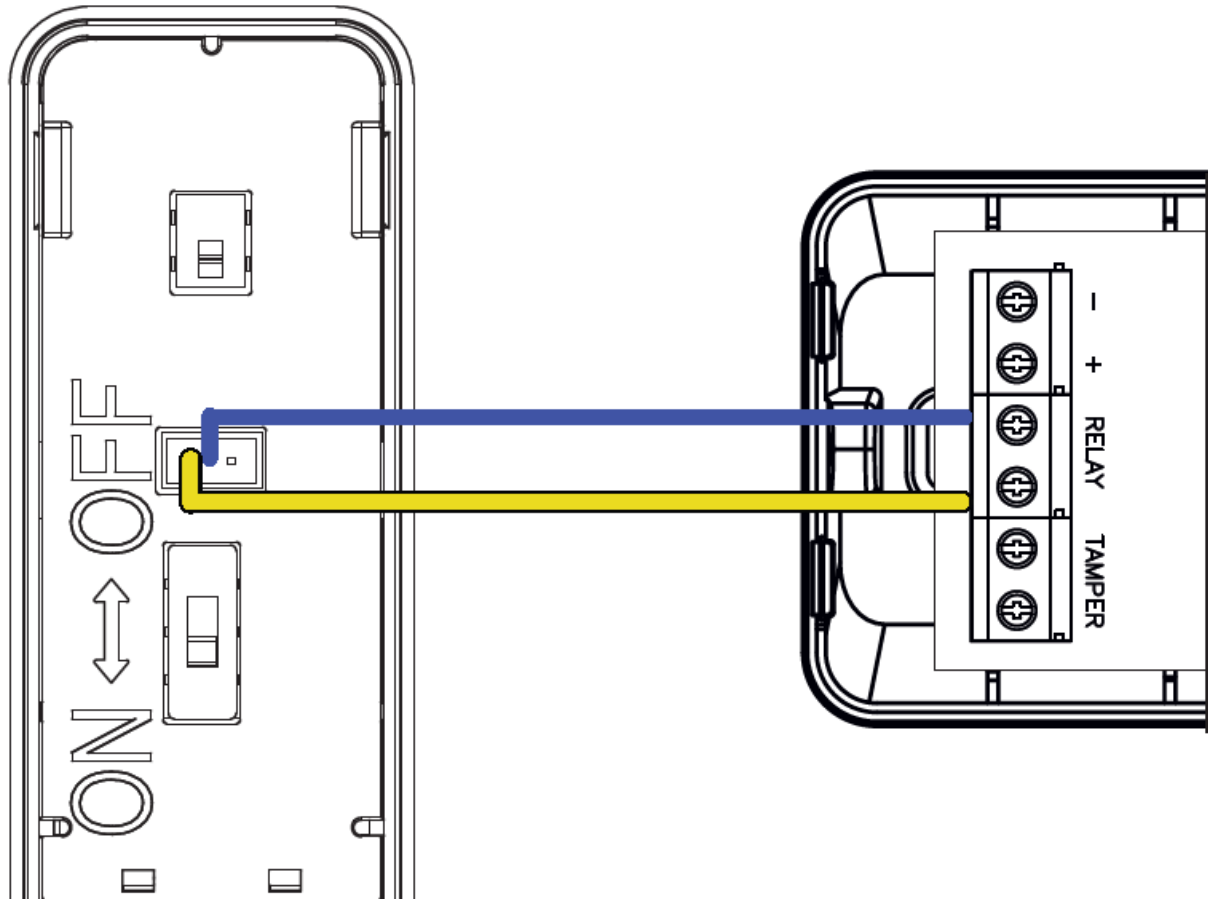
1



2 ✓



## AN EXTERNAL SENSOR CONNECTION



[www.u-prox.systems](http://www.u-prox.systems)

[support@u-prox.systems](mailto:support@u-prox.systems)

[www.u-prox.systems/doc\\_wdcplus](http://www.u-prox.systems/doc_wdcplus)





[U-PROX WDC Plus Wireless Magnetic Door Window Contact Detector](#) [pdf] User Manual  
WDC Plus Wireless Magnetic Door Window Contact Detector, WDC Plus, Wireless Magnetic Door Window Contact Detector, Magnetic Door Window Contact Detector, Door Window Contact Detector, Window Contact Detector, Contact Detector, Detector

References

- [User Manual](#)

[Manuals+](#), [Privacy Policy](#)

This website is an independent publication and is neither affiliated with nor endorsed by any of the trademark owners. The "Bluetooth®" word mark and logos are registered trademarks owned by Bluetooth SIG, Inc. The "Wi-Fi®" word mark and logos are registered trademarks owned by the Wi-Fi Alliance. Any use of these marks on this website does not imply any affiliation with or endorsement.