



U-PROX WDC Plus Security Systems Instructions

[Home](#) » [U-PROX](#) » U-PROX WDC Plus Security Systems Instructions 

Contents

- [1 U-PROX WDC Plus Security Systems](#)
- [2 Functional parts of the device \(see picture\)](#)
- [3 TECHNICAL SPECIFICATIONS](#)
- [4 WARRANTY](#)
- [5 INSTALLATION](#)
- [6 Documents / Resources](#)
 - [6.1 References](#)
- [7 Related Posts](#)

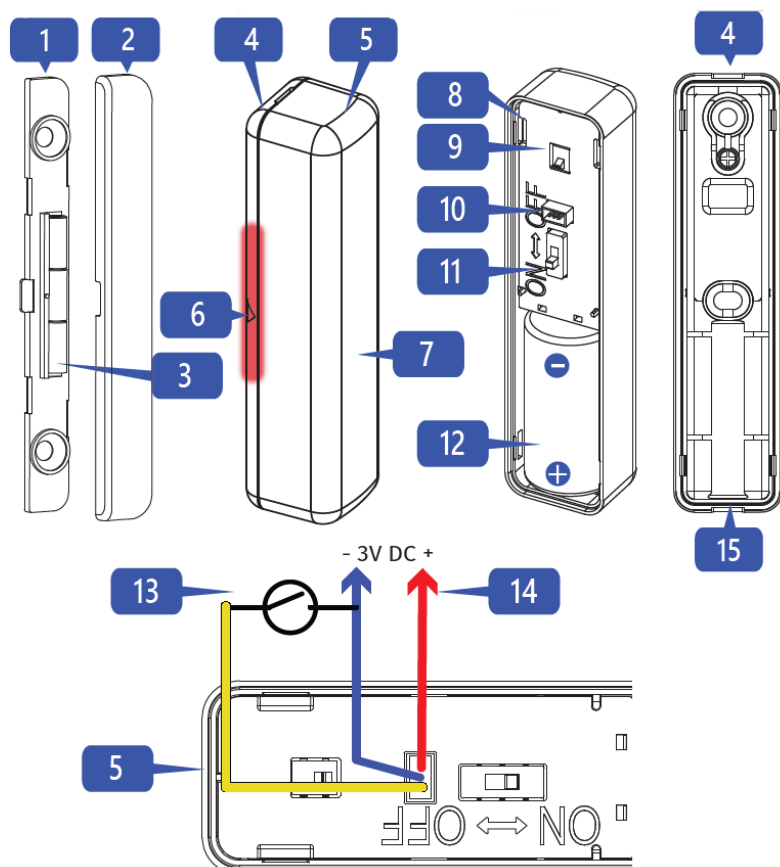
U-PROX

U-PROX WDC Plus Security Systems



U-Prox WDC Plus – is a wireless detector with magnetic contact, pulse counter, and tilt sensor. The device is designed to control the status of structural elements – windows or doors (open/close/change of inclination angle). The detector controls up to 2 security zones. The device sends an alarm notification to the alarm center U-Prox security alarm system. The detector has connector for connecting external sensor, e.g. reed switch. The device is connected to the control panel and is configured with the U-Prox Installer mobile application.

Functional parts of the device (see picture)



1. Bottom plate of magnet case
2. Magnet case cover
3. Neodymium magnet
4. Bottom plate of the detector case
5. Detector case top cover with the device
6. Magnet position marks
7. LED indicator
8. Plastic protector of device board
9. Tamper switch
10. Connector for external sensor:
 - GND contact (ground, blue)
 - DC contact (sensor, yellow)
11. On/off button
12. Battery CR123A
13. External sensor (reed switch)
14. AUX – power output
15. Rubber seal

TECHNICAL SPECIFICATIONS

- Zones 2, adjustable
- Functions built-in reed switch, external input with pulse counter, external input, tilt sensor.
- Reed switch threshold 7-15 mm, operations > 1 000 000
- Power output 3V, 1 mA max.
- Power 3V, CR123A lithium battery included
- Service life of battery up to 5 years (without AUX consumption)
- Radio frequency ISM-band wireless interface with several channels
 - ITU region 1 (EU, UA): 868.0 to 868.6 MHz, bandwidth 100kHz, 20 mW max., up to 4800m (in line of sight)
 - ITU region 3 (AU): 916.5 to 917 MHz, bandwidth 100kHz, 20 mW max., up to 4800m (in line of sight)
- Communication Secure two way communication, sabotage detection, key – 256 bits.
- Operating temperature range -20°C to +50°C
- Permissible humidity up to 95%
- Environmental class III (according to EN 50131-1)
- Security grade 2
- Dimensions & weight 85 x 20,9 x 20,4 mm & 66 gram
- Magnet dimensions 85 x 11 x 6 mm
- Case colour white, dark brown, black

COMPLETE SET

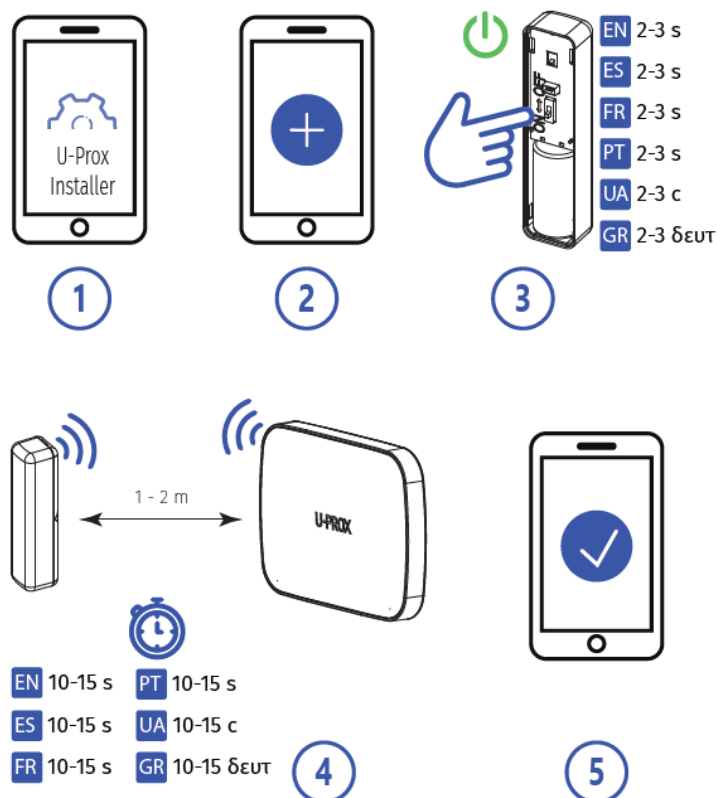
1. U-Prox WDC Plus;
2. Magnet;
3. CR123A battery (pre-installed);

CAUTION. RISK OF EXPLOSION IF BATTERY IS REPLACED BY AN INCORRECT TYPE. DISPOSE USED BATTERIES ACCORDING TO THE NATIONAL REGULATIONS.

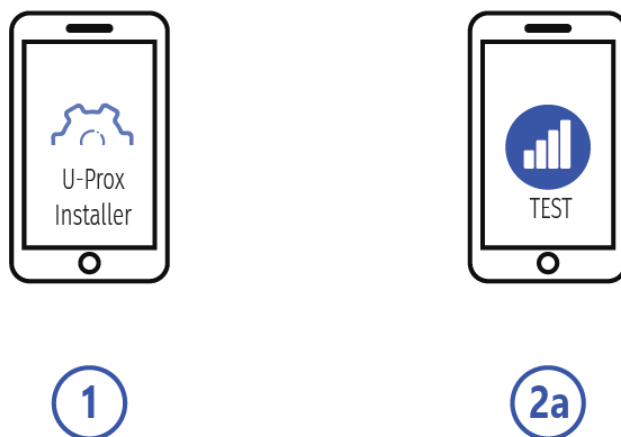
WARRANTY

Warranty for U-Prox devices (except batteries) is valid for two years after the purchase date. If the device operates incorrectly, please contact support@u-prox.systems at first, maybe it can be solved remotely.

REGISTRATION



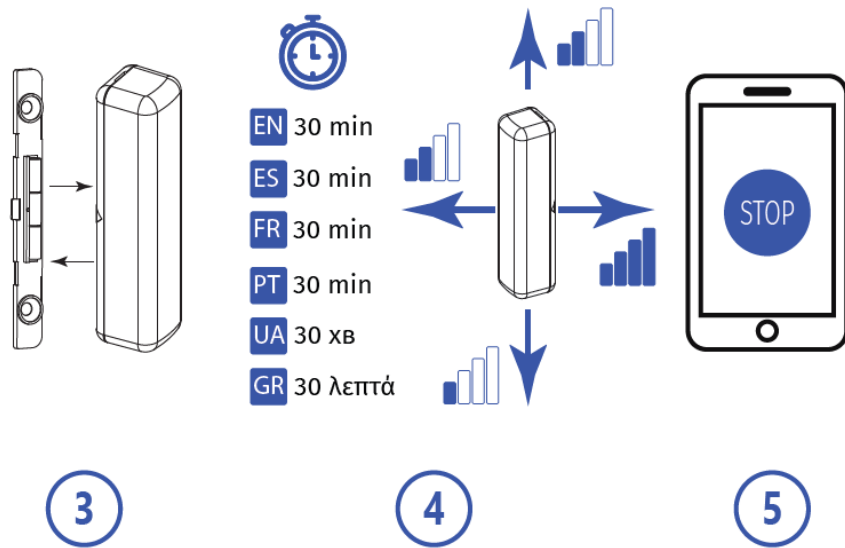
RANGE TEST FOR OPTIMAL INSTALLATION LOCATION



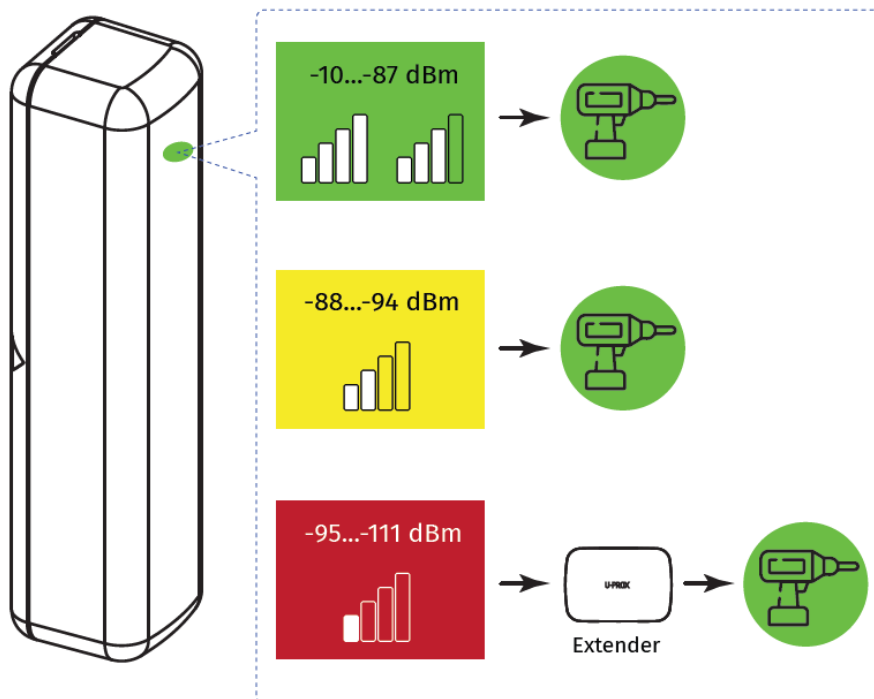
Due to Grade 2 requirement RF link works with reduction of power in 8 dB



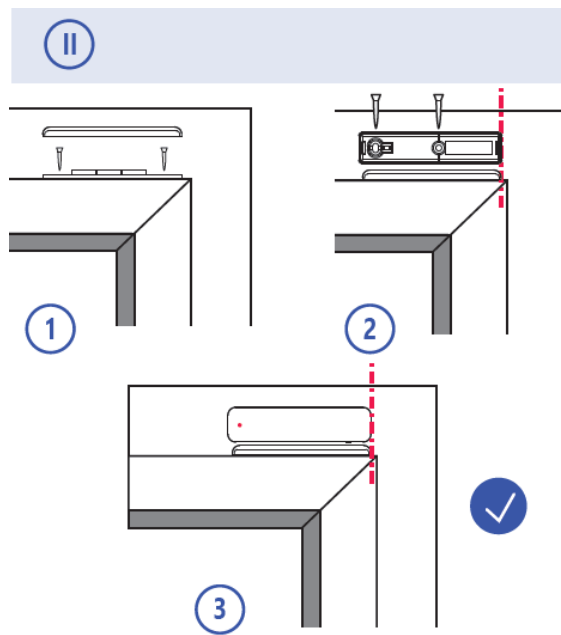
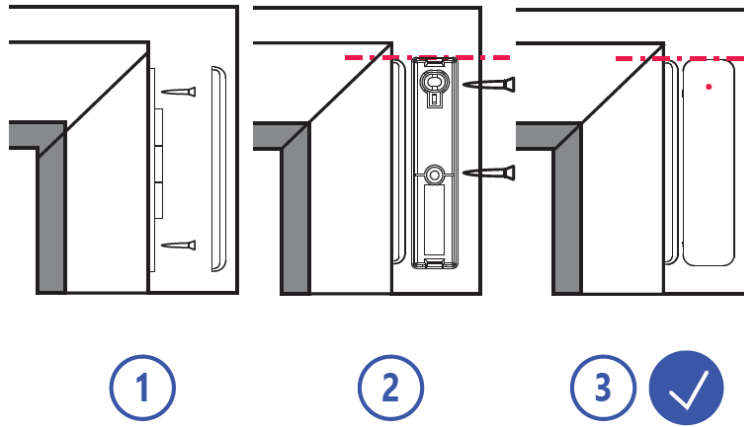
2b

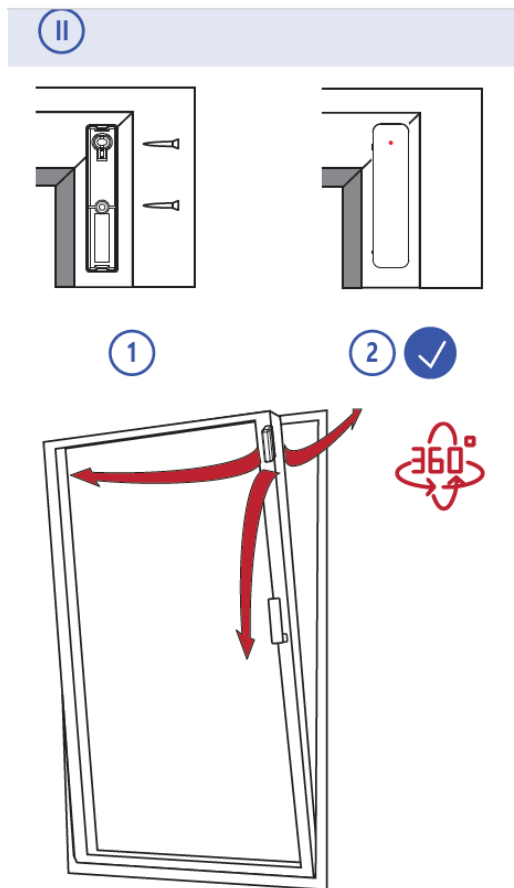


INDICATION IN RANGE TEST MODE

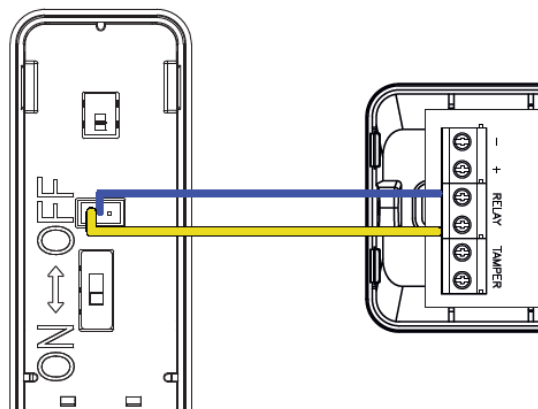


INSTALLATION





AN EXTERNAL SENSOR CONNECTION



www.u-prox.systems
support@u-prox.systems

Documents / Resources



[U-PROX WDC Plus Security Systems](#) [pdf] Instructions

Full U-Prox WDC Plus multilang.1, doc_wdcplus, EN WIRELESS MAGNETIC DOOR-WINDOW CONTACT WITH TILT DETECTION, WDC Plus Security Systems, WDC, Plus Security Systems, Security Systems, Systems

References

- [User Manual](#)

Manuals+. Privacy Policy

This website is an independent publication and is neither affiliated with nor endorsed by any of the trademark owners. The "Bluetooth®" word mark and logos are registered trademarks owned by Bluetooth SIG, Inc. The "Wi-Fi®" word mark and logos are registered trademarks owned by the Wi-Fi Alliance. Any use of these marks on this website does not imply any affiliation with or endorsement.