

**U-PROX
PIR Combi
Wireless
Motion
Detector**



U-PROX PIR Combi Wireless Motion Detector User Manual

[Home](#) » [U-PROX](#) » U-PROX PIR Combi Wireless Motion Detector User Manual 

Contents

- [1 U-PROX PIR Combi Wireless Motion Detecto](#)
- [2 Product Information](#)
- [3 Specifications](#)
- [4 Product Usage Instructions](#)
- [5 Functional parts of the device](#)
- [6 REGISTRATION](#)
- [7 RANGE TEST](#)
- [8 INSTALLATION](#)
- [9 More Info](#)
- [10 FAQs](#)
- [11 Documents / Resources](#)
 - [11.1 References](#)

U-PROX

U-PROX PIR Combi Wireless Motion Detecto



Product Information

- **Product Name:** U-PROX PIR Combi
- **Manufacturer:** LLC INTEGRATED TECHNICAL VISION
- **Website:** www.u-prox.systems
- **Email:** support@u-prox.systems
- **User Manual:** www.u-prox.systems/doc_pircombi

Specifications

- **Motion Detector:**
 - **Maximum Working Distance:** 12 m
 - **Detection Angle:** 8 m
 - **PIR Target Detection Speed:** 0.3 to 3 m/s
 - **Optical Noise Immunity:** > 6500 Lux
 - **Pet Immunity:** Up to 20 kg
- **Break Glass Detector:**
 - **Maximum Distance:** 8 m
 - **Types of Glass:** Ordinary, patterned, tempered, laminated, reinforced, protected by polymer film of classes A1, A2, A3, double-glazed windows
 - **Glass Thickness:** 2 mm to 8 mm
 - **Glass Dimension:** 0.5 m x 0.5 m to 3.0 m x 3.0 m
- **Power:** 3V CR123A lithium battery included, up to 5 years battery life
- **Radio Frequency Communication:** ISM-band wireless interface with several channels
- **Dimensions & Weight:** 90 x 60 x 34.35 mm & 150 grams (with wall bracket and angle bracket)
- **Case Colour:** White, Black

Product Usage Instructions

Installation and Setup

1. Mount the device using the provided wall bracket or angle bracket.
2. Insert the CR123A battery into the device.
3. Download and install the U-PROX Installer mobile application on your smartphone.
4. Follow the in-app instructions to pair the device with the control panel.

Operation

1. Ensure the device is powered on using the On/Off switch/button.
2. The device will detect motion and break glass events within its specified ranges.
3. In case of an alarm trigger, the device will send a notification to the U-PROX control panel.

Maintenance

1. Periodically check and replace the battery as needed.
2. Clean the device and lens regularly to ensure optimal performance.
3. Test the device's functionality by triggering motion and break glass events for verification.

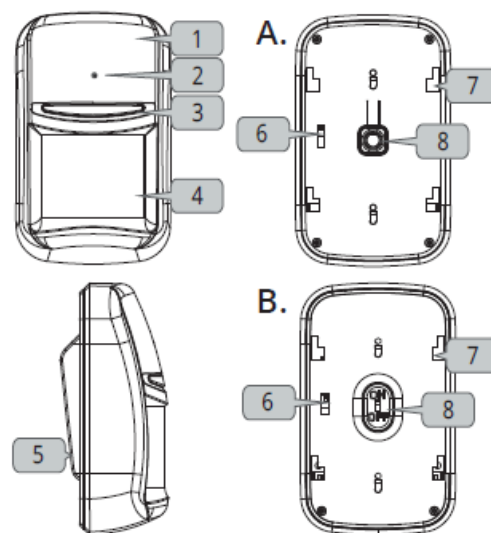
User manual

- WIRELESS PET IMMUNE MOTION AND BREAKGLASS DETECTOR Is a part of the U-PROX security alarm system
- **Manufacturer:** LLC INTEGRATED TECHNICAL VISION Mykoly Hrinchenka str. 2/1, 03038, Kyiv, Ukraine
- U-PROX PIR Combi – is a combined wireless motion detector and ES acoustic breakglass sensor. The device is equipped with a PIR-sensor and microphone and is designed for the security of any indoor residential or industrial premises.
- When the thermal balance of the environment changes or there is the sound of breaking glass, the device sends an alarm notification to the U-PROX control panel. For indoor use only.
- The device is connected to the control panel and is configured with the U-PROX Installer mobile application



Functional parts of the device

- **Functional parts of the device (see picture)**



1. Device case
2. Microphone hole
3. Light indicator of the operation modes
4. Fresnel lens
5. Bracket for mounting
6. Tamper switch
7. Back of the device
8. on/Off switch/button

technical specification

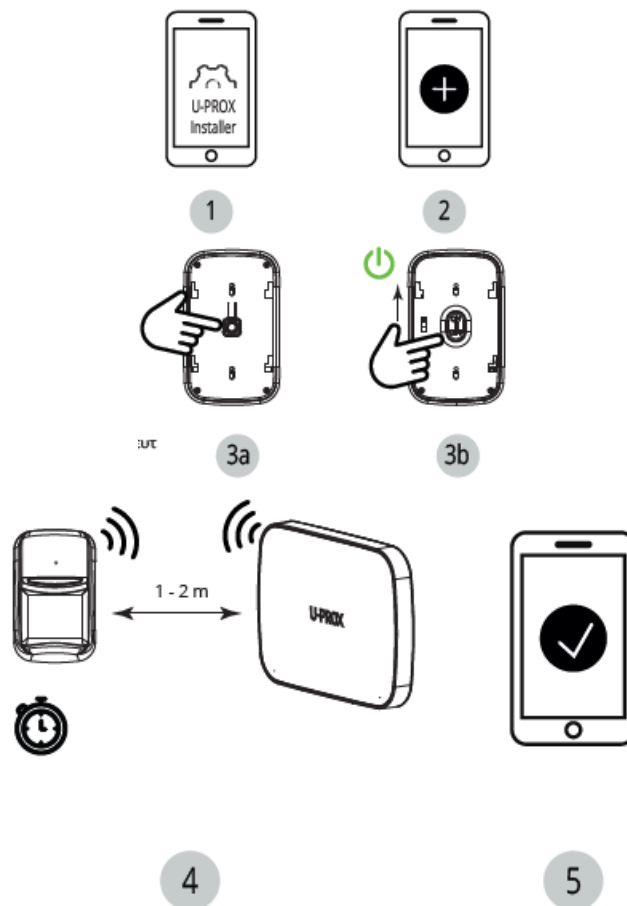
TECHNICAL SPECIFICATIONS	
	Motion detector
Maximum working distance	12 m
Detection angle	88°
PIR target detection speed	0.3 to 3 m/s
Optical noise immunity	> 6500 Lux
Pet immunity	weight up to 20 kg
	Break glass detector
Maximum distance	8 m
Detection angle	120°
Types of glass	Ordinary, patterned, tempered, laminated, reinforced, protected by polymer film of classes A1, A2, A3, double-glazed windows 4x16x4.
Glass thickness	2 mm to 8 mm
Glass dimension	0.5 m x 0.5 m to 3.0 m x 3.0 m
Power	3V, CR123A lithium battery included
Service life of battery	up to 5 years
Radio frequency	ISM-band wireless interface with several channels ITU region 1: 868.0 to 868.6 MHz, (EU, UA) 869.0 to 869.4 (MA), bandwidth 100kHz, 20 mW max., up to 4800m (in line of sight); ITU region 3 (AU): 916.5 to 917 MHz, bandwidth 100kHz, 20 mW max., up to 4800m (in line of sight).
Communication	Secure two way communication, sabotage detection, key - 256 bits
Operating temperature range	-10°C to +55°C
Permissible humidity	up to 75%
Environmental class	II (according to EN 50131-1)
Security grade	2
Dimensions & weight	90 x 60 x 34.35 mm & 150 grams
with a wall bracket	90 x 60 x 41.6 mm
with an angle bracket	90 x 60 x 48.84 mm
Case colour	white, black

COMPLETE SET

1. U-PROX PIR Combi;
2. CR123A battery (pre-installed);
3. Wall bracket;
4. Angle bracket;
5. Mounting kit;
6. Quick start guide

- **CAUTION.** RISK OF EXPLOSION IF BATTERY IS REPLACED BY AN INCORRECT TYPE. DISPOSE USED BATTERIES ACCORDING TO THE NATIONAL REGULATIONS
- Warranty for U-PROX devices (except batteries) is valid for two years after the purchase date. If the device operates incorrectly, don't hesitate to get in touch with support@u-prox.systems at first, maybe it can be solved remotely.

REGISTRATION

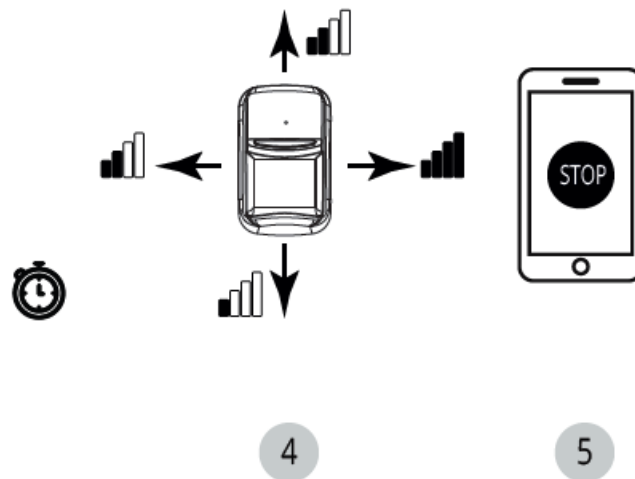


RANGE TEST

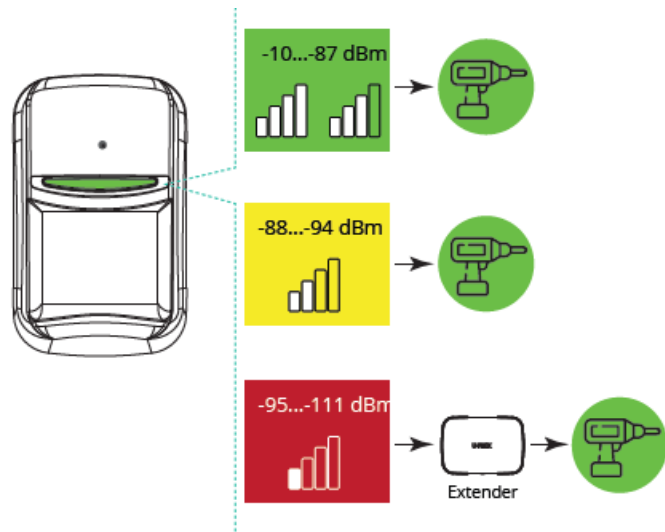
- RANGE TEST FOR OPTIMAL INSTALLATION LOCATION



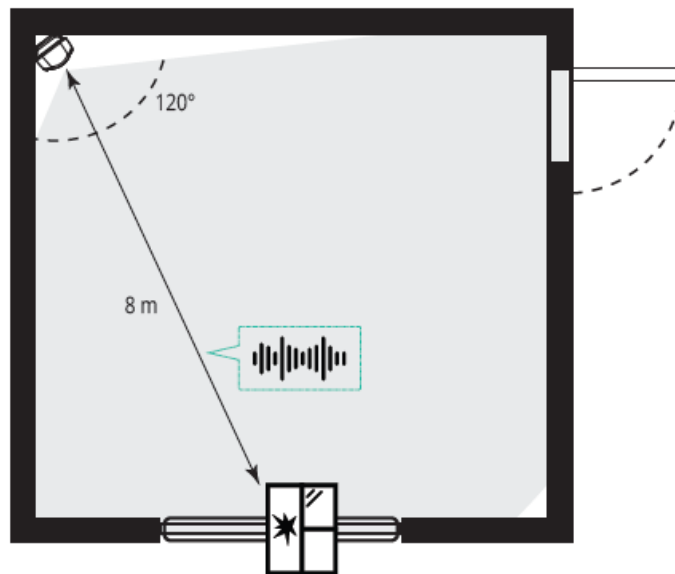
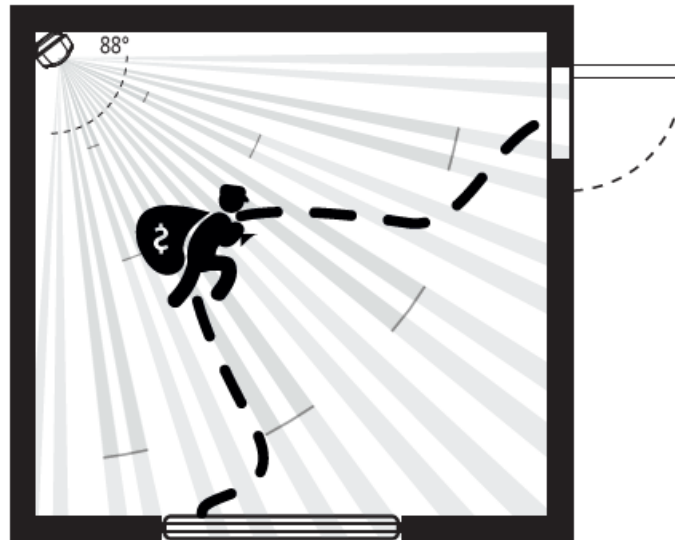
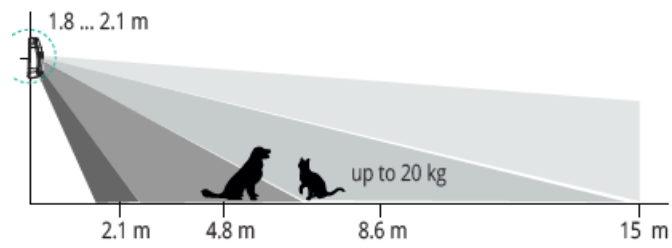
- Due to the Grade 2 requirement, RF link works with a reduction of power in 8 dB



• INDICATION IN RANGE TEST MODE

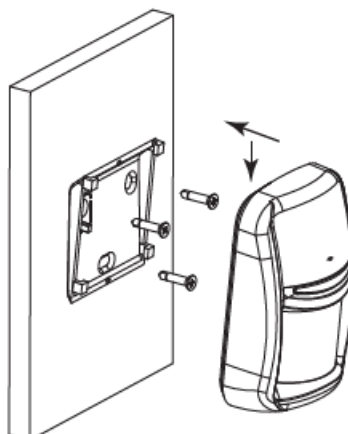


• DEVICE PLACEMENT

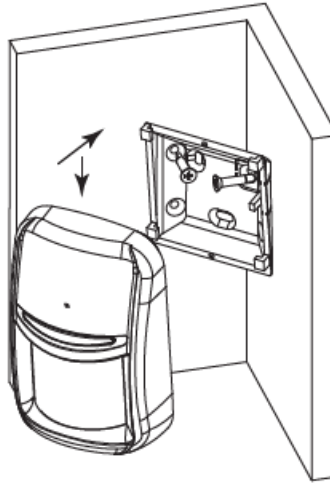


INSTALLATION

- Wall bracket



- Angle bracket



More Info

- www.u-prox.systems
- support@u-prox.systems
- www.u-prox.systems/doc_pircombi



FAQs

- **Q: Can the U-PROX PIR Combi be used outdoors?**
 - **A:** No, the device is designed for indoor use only.
- **Q: How do I know when the battery needs to be replaced?**
 - **A:** The device will typically indicate a low battery status either through the control panel or by a specific light indicator on the device itself.
- **Q: What is the recommended maintenance schedule for the device?**
 - **A:** It is recommended to test the device's functionality monthly and perform a thorough cleaning every six months.

Documents / Resources



[U-PROX PIR Combi Wireless Motion Detector](#) [pdf] User Manual
PIR Combi Wireless Motion Detector, PIR, Combi Wireless Motion Detector, Wireless Motion De
tector, Motion Detector, Detector

References

- [User Manual](#)

[Manuals+](#), [Privacy Policy](#)

This website is an independent publication and is neither affiliated with nor endorsed by any of the trademark owners. The "Bluetooth®" word mark and logos are registered trademarks owned by Bluetooth SIG, Inc. The "Wi-Fi®" word mark and logos are registered trademarks owned by the Wi-Fi Alliance. Any use of these marks on this website does not imply any affiliation with or endorsement.