



U-PROX PIR Combi VB Wireless Motion and Break Glass Detector with Vertical Barrier Lens User Manual

[Home](#) » [U-PROX](#) » U-PROX PIR Combi VB Wireless Motion and Break Glass Detector with Vertical Barrier Lens User Manual 

Contents

- [1 U-PROX PIR Combi VB Wireless Motion and Break Glass Detector with Vertical Barrier Lens](#)
- [2 Functional parts of the device \(see picture\)](#)
- [3 TECHNICAL SPECIFICATIONS](#)
- [4 COMPLETE SET](#)
- [5 Warranty](#)
- [6 REGISTRATION](#)
- [7 INDICATION IN RANGE TEST MODE](#)
- [8 INSTALLATION](#)
- [9 Documents / Resources](#)
- [10 Related Posts](#)

UPROXX

U-PROX PIR Combi VB Wireless Motion and Break Glass Detector with Vertical Barrier Lens

**Manufacturer:**

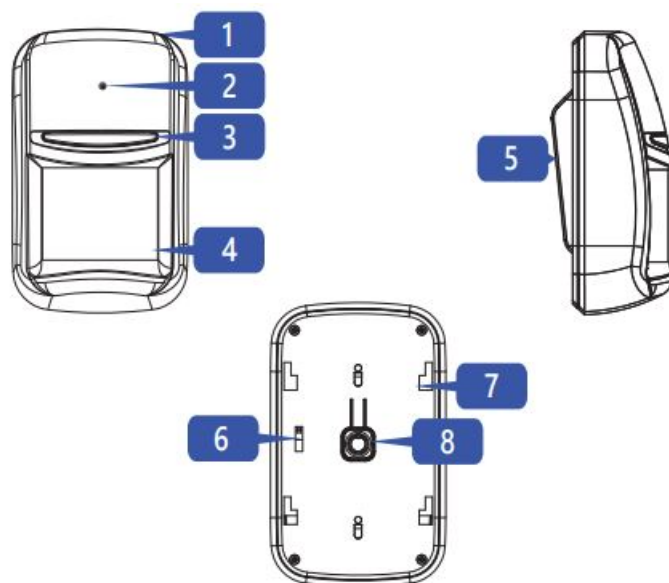
Integrated Technical Vision Ltd. Vasyl Lypkivsky str. 1, 03035, Kyiv, Ukraine

U-Prox MP

It is a wireless security control panel designed to EN control the home security system. U-Prox MP supports the connection of up to 200 devices (sensors, keypads, key fobs, etc.) via the U-Prox band radio frequency at a distance of up to 4800 m. The device interacts with the user and the security company, using Ethernet and GSM/GPRS communication for reliability. The device is connected to the U-Prox Cloud and is configured with the U-Prox Installer mobile or WEB application.

Functional parts of the device (see picture)

1. Device case
2. Microphone hole
3. Light indicator of the operation modes
4. Fresnel lens
5. Bracket for mounting
6. Tamper switch
7. Back of the device
8. Power button



TECHNICAL SPECIFICATIONS

Motion detector	
Maximum working distance	10 m
Detection angle	7.5°
PIR target detection speed	0.3 to 3 m/s
Optical noise immunity	> 6500 Lux
Break glass detector	
Maximum distance	8 m
Detection angle	120°
Types of glass	Ordinary, patterned, tempered, laminated, reinforced, protected by polymer film of classes A1, A2, A3, double-glazed windows 4x16x4
Glass thickness	2 mm to 8 mm
Glass dimension	0.5 m x 0.5 m to 3.0 m x 3.0 m
Power	3V, CR123A lithium battery included
Service life of battery	up to 5 years
Radio frequency	ISM-band wireless interface with several channels ITU region 1 (EU, UA): 868.0 to 868.6 MHz, bandwidth 100kHz, 20 mW max., up to 4800m (in line of sight); ITU region 3 (AU): 916.5 to 917 MHz, bandwidth 100kHz, 20 mW max., up to 4800m (in line of sight).
Communication	Secure two way communication, sabotage detection, key - 256 bits
Operating temperature range	-10°C to +55°C
Dimensions & weight	90 x 60 x 34.35 mm & 150 grams
with a wall bracket	90 x 60 x 41.6 mm
with an angle bracket	90 x 60 x 48.84 mm
Case colour	white, black

COMPLETE SET

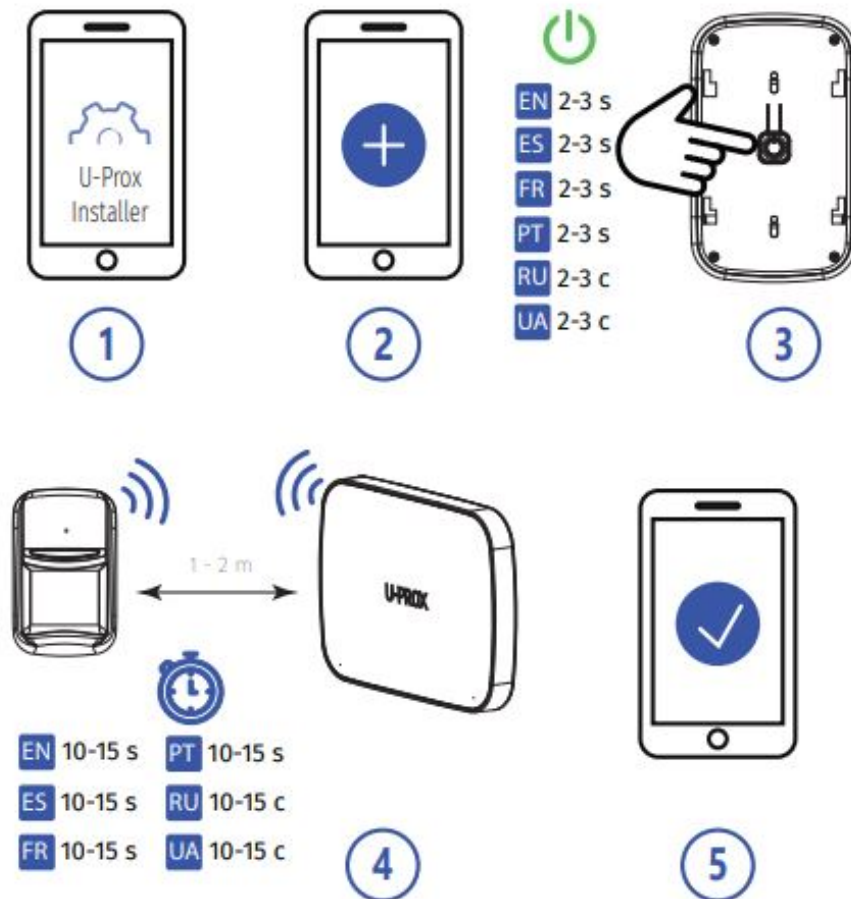
1. U-Prox PIR Combi (VB);
2. CR123A battery (pre-installed);
3. Wall bracket;
4. Angle bracket;
5. Mounting kit;
6. Quick start guide

CAUTION. RISK OF EXPLOSION IF BATTERY IS REPLACED BY AN INCORRECT TYPE. DISPOSE USED BATTERIES ACCORDING TO THE NATIONAL REGULATIONS

Warranty

Warranty for U-Prox devices (except batteries) is valid for two years after the purchase date. If the device operates incorrectly, please contact support@u-prox.systems at first, maybe it can be solved remotely.

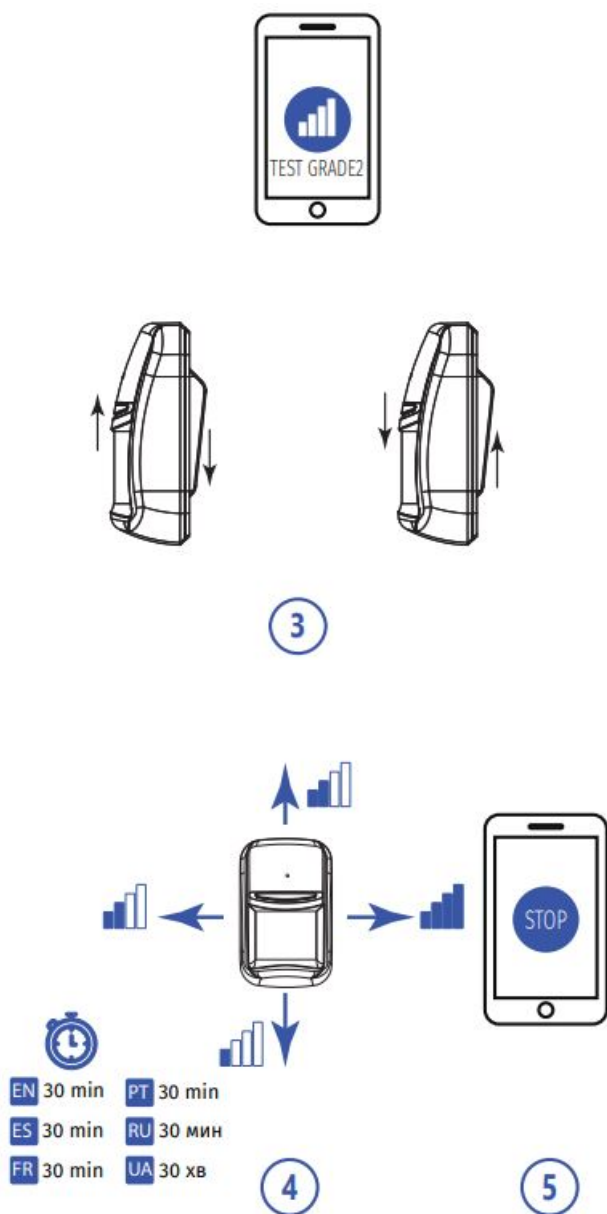
REGISTRATION



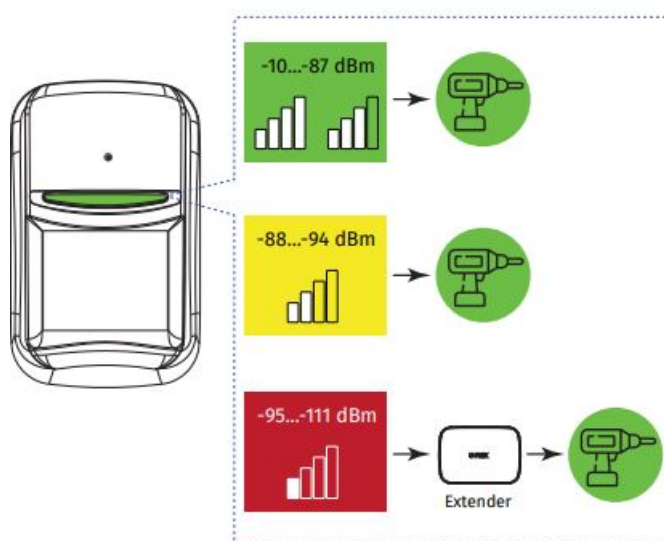
RANGE TEST FOR OPTIMAL INSTALLATION LOCATION

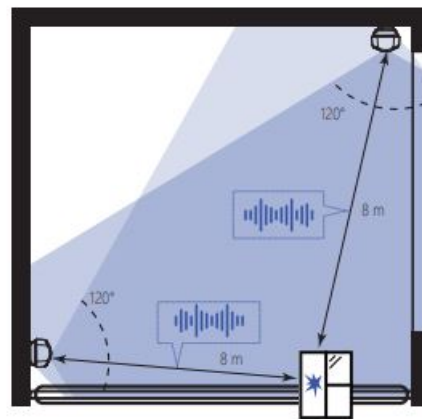
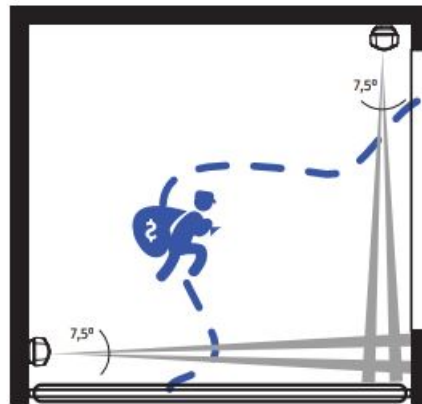
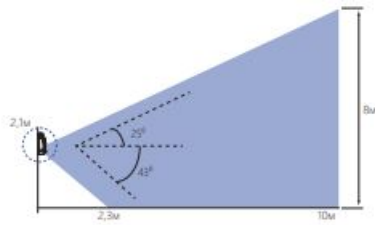


Due to Grade 2 requirement, RF link works with reduction of power in 8 dB



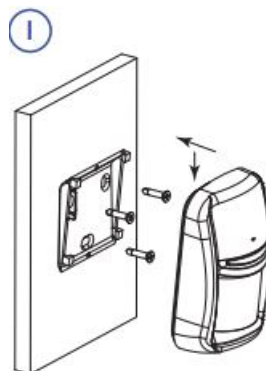
INDICATION IN RANGE TEST MODE





INSTALLATION

1. Wall bracket



2. Angle bracket



Documents / Resources



[U-PROX PIR Combi VB Wireless Motion and Break Glass Detector with Vertical Barrier Lens](#) [pdf] User Manual

PIR Combi VB, Wireless Motion and Break Glass Detector with Vertical Barrier Lens, PIR Combi VB Wireless Motion and Break Glass Detector with Vertical Barrier Lens

[Manuals+](#)