

U-PROX PIR Cam Wireless Detector



U-PROX PIR Cam Wireless Detector User Manual

[Home](#) » [U-PROX](#) » U-PROX PIR Cam Wireless Detector User Manual 

Contents

- [1 U-PROX PIR Cam Wireless Detector](#)
- [2 WHAT IN BOX](#)
- [3 Functional parts of the device](#)
- [4 TECHNICAL SPECIFICATIONS](#)
- [5 WARRANTY](#)
- [6 REGISTRATION](#)
- [7 INDICATION IN RANGE TEST MODE](#)
- [8 DEVICE PLACEMENT](#)
- [9 INSTALLATION](#)
- [10 Documents / Resources](#)
 - [10.1 References](#)

U-PROX

U-PROX PIR Cam Wireless Detector



User manual

WIRELESS PET IMMUNE MOTION DETECTOR WITH CAMERA Is part of the U-Prox security alarm system
Manufacturer: Integrated Technical Vision Ltd. Vasyl Lypkivsky str. 1, 03035, Kyiv, Ukraine

U-Prox PIR Cam

is a wireless motion detector. The device is EN equipped with a PIR-sensor and camera and is designed for the security of any indoor residential or industrial premises. When the thermal balance of the environment changes the device sends an alarm notification and photos to the U-Prox control panel. Supports series of photos and photo on demand. For indoor use only.

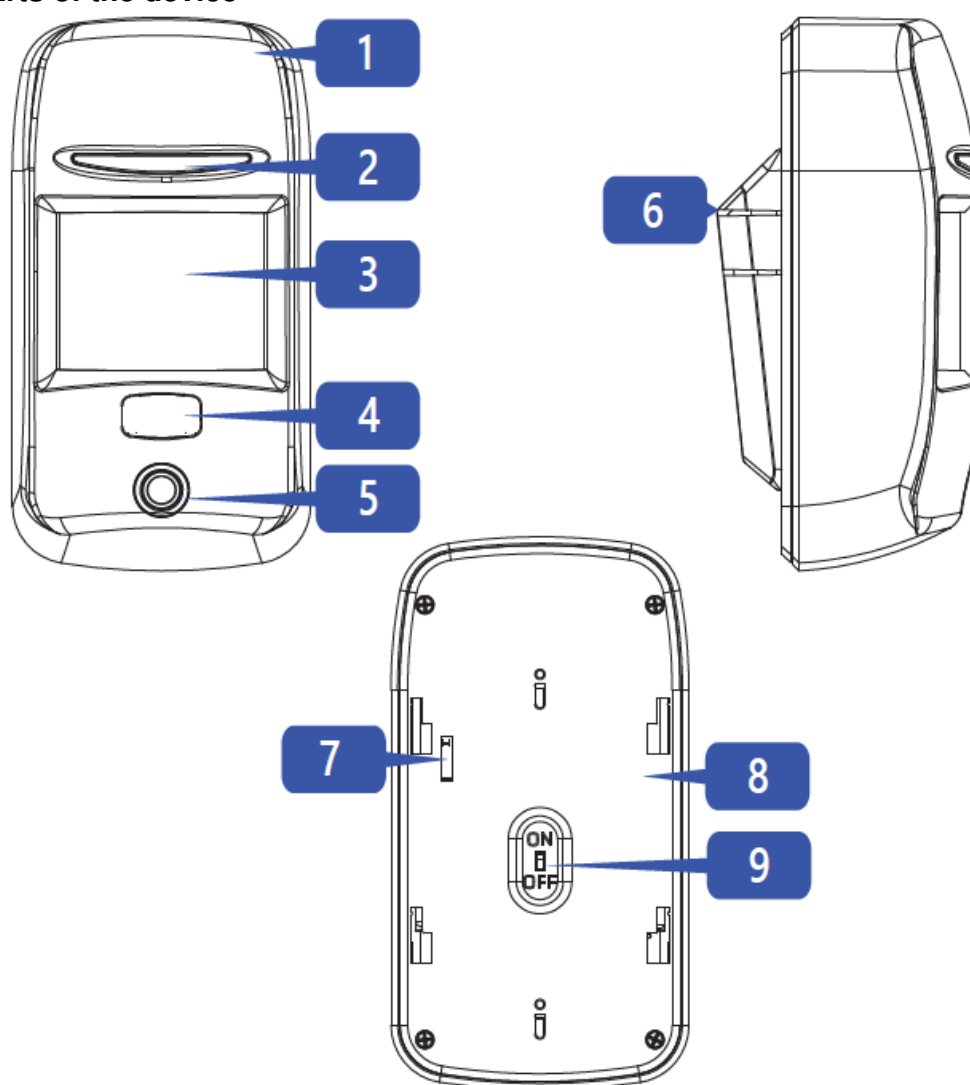
WHAT IN BOX

1. U-Prox PIR Cam;
2. Two CR123A batteries (pre-installed);
3. Bracket;
4. Mounting kit;
5. Quick start guide

The device is connected to the control panel and is configured with the U-Prox Installer mobile application



Functional parts of the device



1. Device case
2. Light indicator of the operation modes
3. Fresnel lens
4. Camera lens
5. Camera flash

6. Bracket for mounting
7. Tamper switch
8. Back of the device
9. On/Off switch

TECHNICAL SPECIFICATIONS

	Motion detector
Maximum working distance	12 m
Detection angle	88°
PIR target detection speed	0.3 to 3 m/s
Optical noise immunity	> 6500 Lux
Pet immunity	weight up to 20 kg
	Camera
Maximum distance	daylight - up to 12 m night (with camera flash) - up to 8 m
Resolution	Adjustable - 640*480, 320*240, 160*120,
Photo transmit time	up to 9 seconds (average quality)
Transferring photos	signal level > -90 dBm, battery charge > 15%
Power	3V, two CR123A lithium batteries included
Service life of battery	up to 3 years
Radio frequency	ISM-band wireless interface with several channels ITU region 1 (EU, UA): 868.0 to 868.6 MHz, bandwidth 100kHz, 20 mW max., up to 4800m (in line of sight); ITU region 3 (AU): 916.5 to 917 MHz, bandwidth 100kHz, 20 mW max., up to 4800m (in line of sight)
Communication	Secure two way communication, sabotage detection, key - 256 bits
Operating temperature range	-10°C to +55°C
Dimensions & weight	130 x 70 x 46.5 mm & 210 grams
with a bracket	130 x 70 x 61.6 mm
Case colour	white, black

COMPLETE SET

1. U-Prox PIR Cam;
2. Two CR123A batteries (pre-installed);
3. Bracket;
4. Mounting kit;
5. Quick start guide

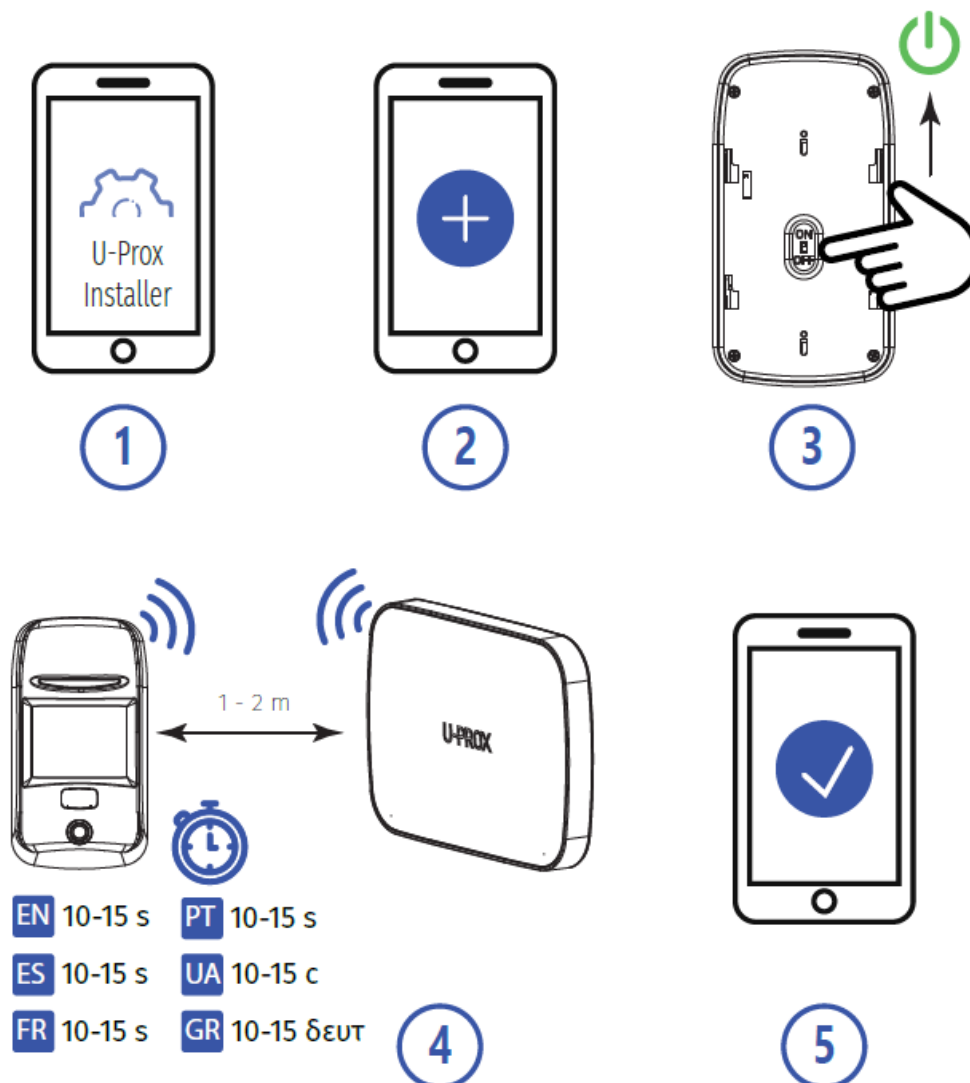
CAUTION. RISK OF EXPLOSION IF BATTERY IS REPLACED BY AN INCORRECT TYPE. DISPOSE USED BATTERIES ACCORDING TO THE NATIONAL REGULATIONS

ATTENTION. U-PROX PIR CAM IS COMPATIBLE WITH U-PROX MPX SERIE OF SECURITY CENTERS ONLY

WARRANTY

- Warranty for U-Prox devices (except batteries) is valid for two years after the purchase date.
- If the device operates incorrectly, please contact support@u-prox.systems at first, maybe it can be solved remotely.

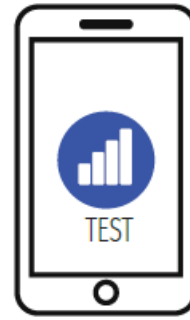
REGISTRATION



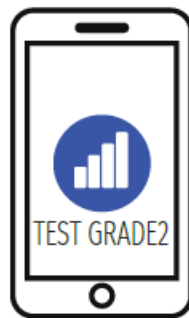
RANGE TEST FOR OPTIMAL INSTALLATION LOCATION



1

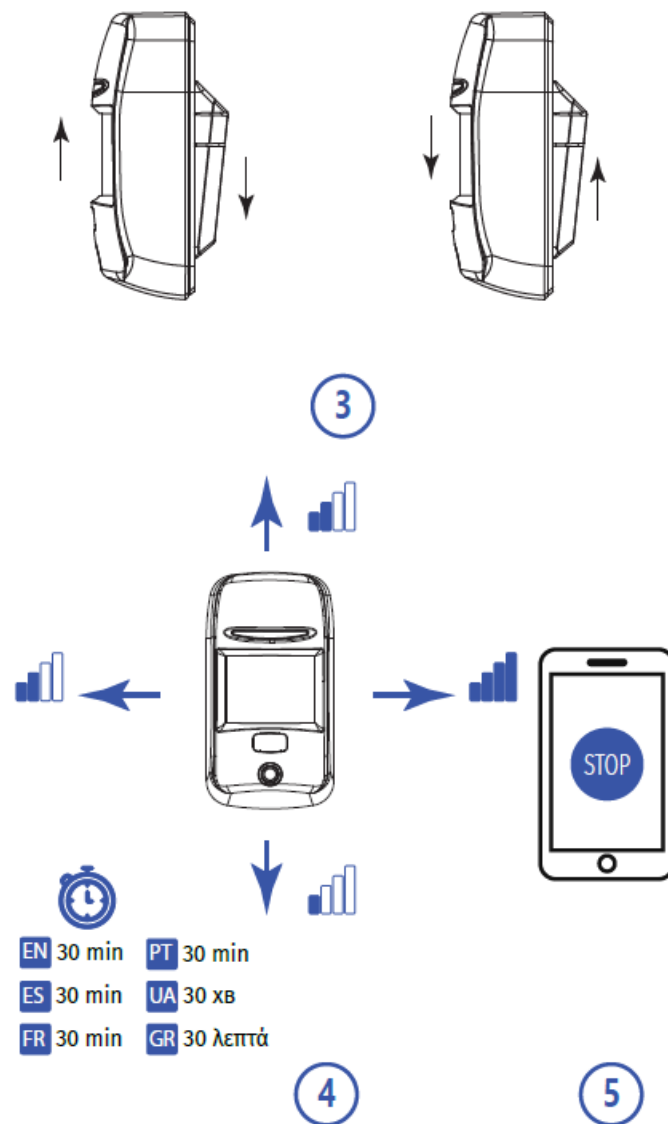


2a

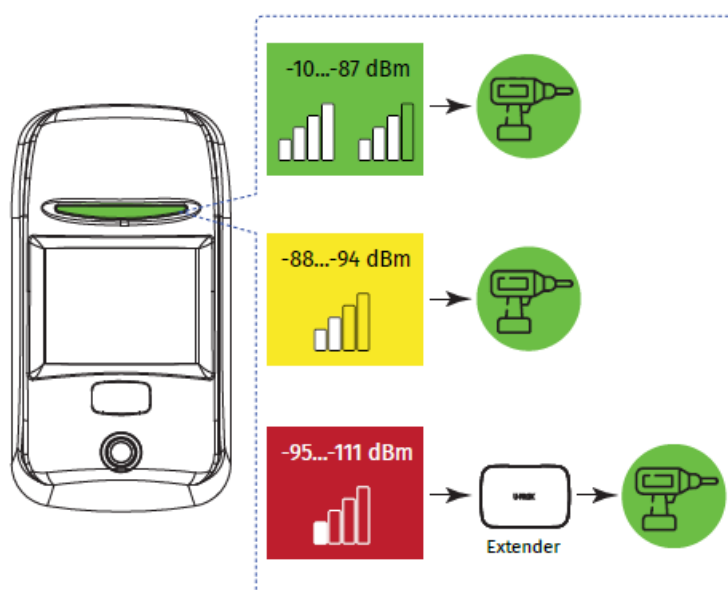


2b

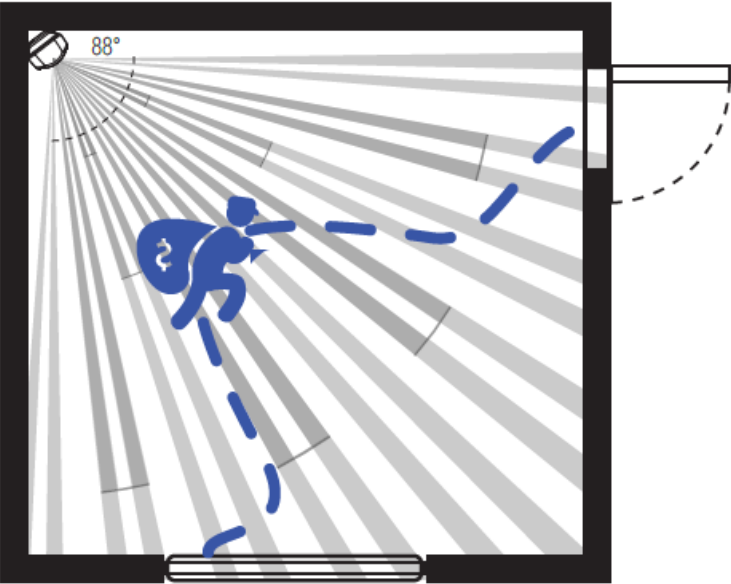
Due to Grade 2 requirement RF link works with reduction of power in 8 dB



INDICATION IN RANGE TEST MODE

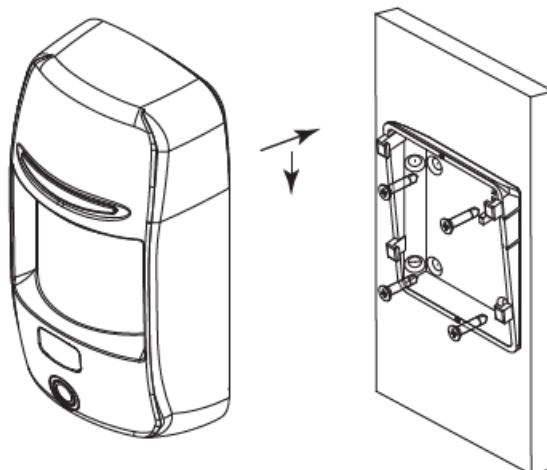


DEVICE PLACEMENT

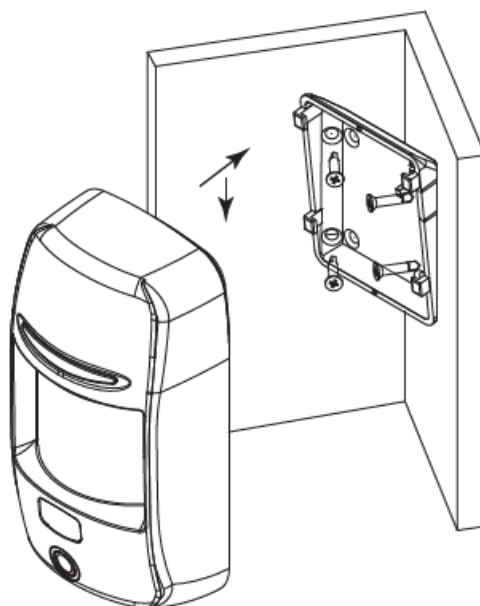


INSTALLATION

I

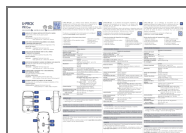


II



www.u-prox.systems
support@u-prox.systems
www.u-prox.systems/doc_pircam

Documents / Resources



[U-PROX PIR Cam Wireless Detector](#) [pdf] User Manual
PIR Cam Wireless Detector, PIR Cam, Wireless Detector, Detector

References

- [User Manual](#)

[Manuals+](#), [Privacy Policy](#)

This website is an independent publication and is neither affiliated with nor endorsed by any of the trademark owners. The "Bluetooth®" word mark and logos are registered trademarks owned by Bluetooth SIG, Inc. The "Wi-Fi®" word mark and logos are registered trademarks owned by the Wi-Fi Alliance. Any use of these marks on this website does not imply any affiliation with or endorsement.