



## U PROX PIR Cam Indoor Detectors User Guide

[Home](#) » [U-PROX](#) » U PROX PIR Cam Indoor Detectors User Guide 

# U-PROX PIR Cam

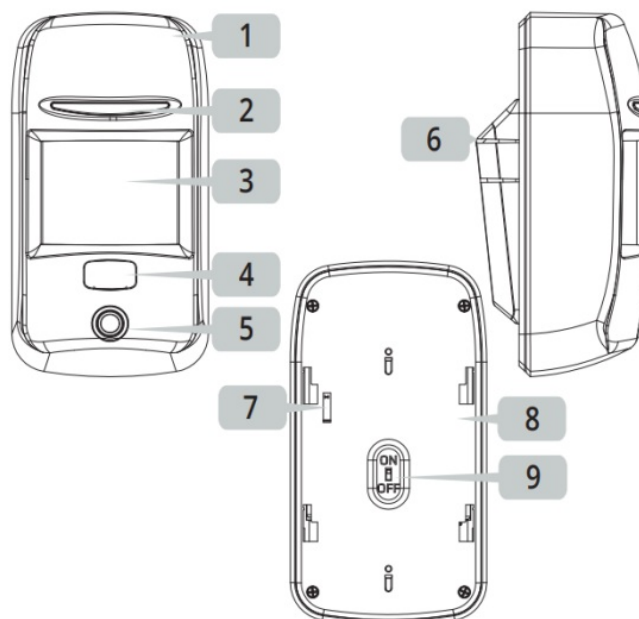
User manual

**WIRELESS PET IMMUNE MOTION DETECTOR WITH CAMERA**

Is part of the U-PROX security alarm system

Manufacturer: Integrated Technical Vision Ltd.

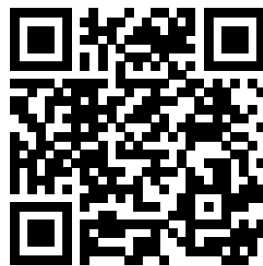
Vasyl Lypkivsky str. 1, 03035, Kyiv, Ukraine



## Contents

- 1 PIR Cam Indoor Detectors
- 2 TECHNICAL SPECIFICATIONS
- 3 REGISTRATION
- 4 INDICATION
- 5 Documents / Resources
  - 5.1 References

## PIR Cam Indoor Detectors



[http://www.u-prox.systems/doc\\_pircam](http://www.u-prox.systems/doc_pircam)

**LLC INTEGRATED TECHNICAL VISION** declares, that the U-PROX PIR Cam complies with the Radio Equipment Directive 2014/53/EU and with the Directive 2011/65/EU (RoHS). The original Declaration of Conformity is available on the website [www.security.u-prox.systems](http://www.security.u-prox.systems) in the Certificates section.

U-PROX PIR Cam – is a wireless motion detector. The device is equipped with a PIR-sensor and camera and is designed for the security of any indoor residential or industrial premises. When the thermal balance of the environment changes the device sends an alarm notification and photos to the U-PROX control panel. Supports series of photos and photo on demand. For indoor use only.

The device is connected to the control panel and is configured with the U-PROX Installer mobile application. Functional parts of the device (see picture)

1. Device case
2. Light indicator of the operation modes
3. Fresnel lens
4. Camera lens
5. Camera flash
6. Bracket for mounting
7. Tamper switch
8. Back of the device
9. On/Off switch

## TECHNICAL SPECIFICATIONS

### Motion detector

Maximum working dista	12 m
Detection angle	0.3 to 3 m/s
PIR target detection spe:	weight up to 20 kg
Optical noise immunity	Camera
Pet immunity	88°

## Camera

Maximum distance	daylight – up to 12 m night (with camera flash) – up to 8 m
Resolution	Adjustable – 640*480, 320*240, 160*120,
Photo transmit time	up to 9 seconds (average quality)
Transferring photos	signal level > -90 dBm, battery charge > 15%
Power	3V, two CR123A lithium batteries included
Service life of battery	up to 3 years
Radio frequency	ISM-band wireless interface with several channels ITU region 1: 868 .0 to 868.6 MHz, (EU, UA) 869.0 to 869.4 (MA), bandwidth 100kHz, 20 mW max., up to 4800m (in line of sight); ITU region 3 (AU): 916.5 to 917 MHz, bandwidth 100kHz, 20 mW max., up to 4800m (in line o f sight).
Communication	Secure two way communication, sabotage detection, key – 256 bits
Operating temperature	-10°C to +55°C
Permissible humidity	II (according to EN 50131-1)
Environmental class	up to 75%
Security grade	2
Dimensions & weight with a bracket	130 x 70 x 46.5 mm & 210 grams 130 x 70 x 61.6 mm
Case colour	white, black

## COMPLETE SET

1. U-PROX PIR Cam;
2. Two CR123A batteries (pre-installed);
3. Bracket;
4. Mounting kit;
5. Quick start guide

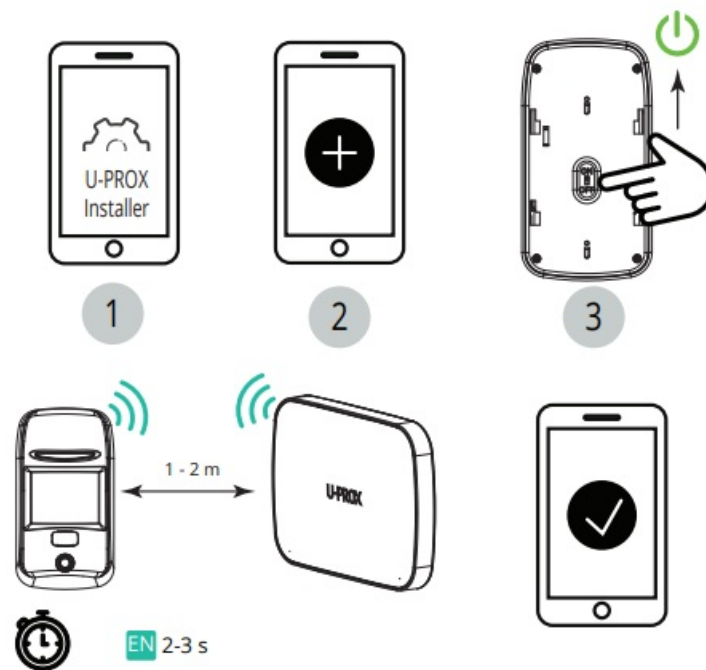
**CAUTION.** RISK OF EXPLOSION IF BATTERY IS REPLACED BY AN INCORRECT TYPE. DISPOSE USED BATTERIES ACCORDING TO THE NATIONAL REGULATIONS

**ATTENTION.** U-PROX PIR CAM IS COMPATIBLE WITH U-PROX MPX SERIE OF SECURITY CENTERS ONLY  
**WARRANTY**

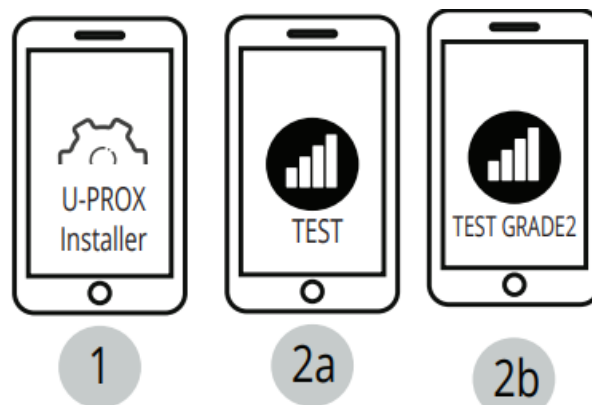
Warranty for U-PROX devices (except batteries) is valid for two years after the purchase date.If the device

operates incorrectly, please contact [support@u-prox.systems](mailto:support@u-prox.systems) at first, maybe it can be solved remotely.

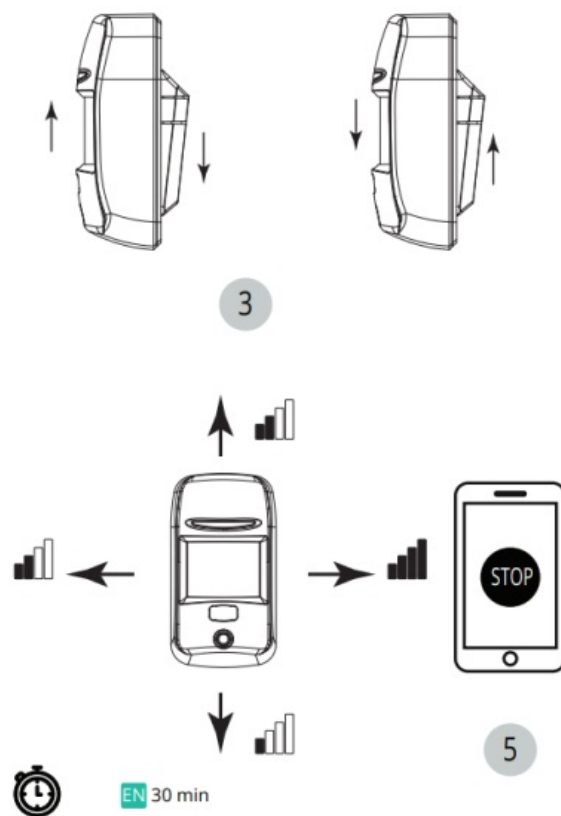
## REGISTRATION



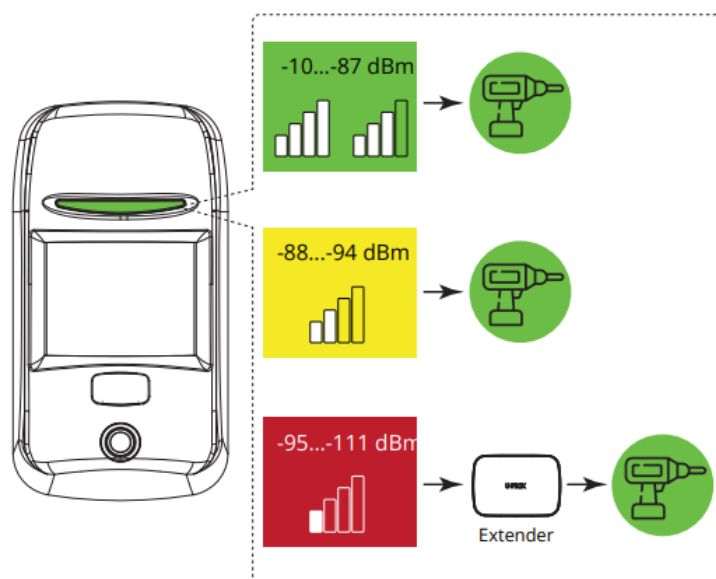
## RANGE TEST FOR OPTIMAL INSTALLATION LOCATION



Due to Grade 2 requirement RF link works with reduction of power in 8 dB



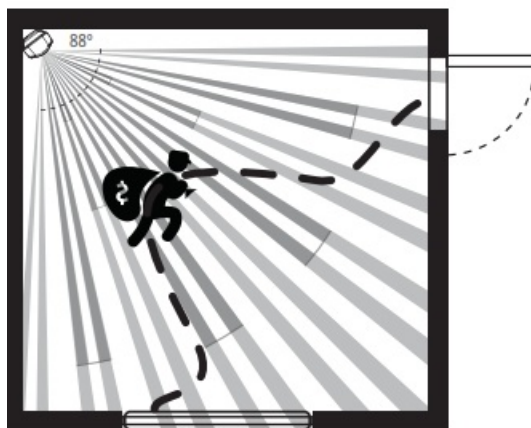
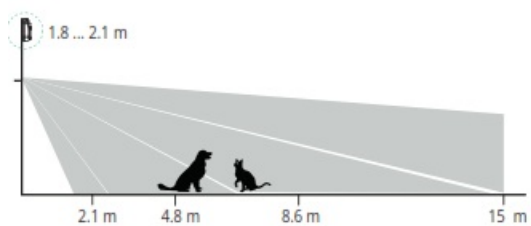
## INDICATION IN RANGE TEST MODE



## DEVICE PLACEMENT

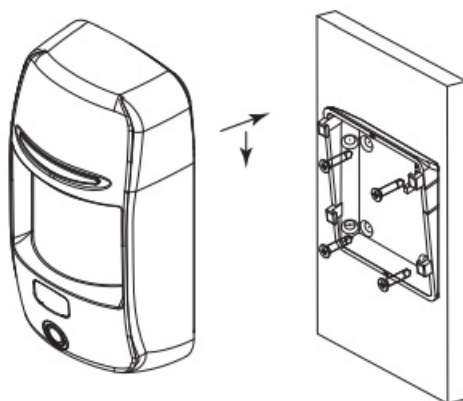


Jp to 20 kg

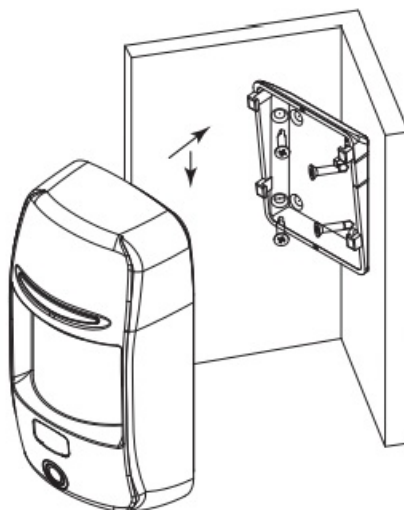


## INDICATION

I



II





[http://www.u-prox.systems/doc\\_pircam](http://www.u-prox.systems/doc_pircam)



[www.u-prox.systems](http://www.u-prox.systems)

[support@u-prox.systems](mailto:support@u-prox.systems)

[www.u-prox.systems/doc\\_pircam](http://www.u-prox.systems/doc_pircam)

## Documents / Resources



[U PROX PIR Cam Indoor Detectors](#) [pdf] User Guide

PIR Cam Indoor Detectors, PIR Cam, Indoor Detectors, Detectors

## References

- [User Manual](#)

### Manuals+, Privacy Policy

This website is an independent publication and is neither affiliated with nor endorsed by any of the trademark owners. The "Bluetooth®" word mark and logos are registered trademarks owned by Bluetooth SIG, Inc. The "Wi-Fi®" word mark and logos are registered trademarks owned by the Wi-Fi Alliance. Any use of these marks on this website does not imply any affiliation with or endorsement.