



U-PROX MPX LE Wireless Security Control Panel User Manual

[Home](#) » [U-PROX](#) » U-PROX MPX LE Wireless Security Control Panel User Manual 

Contents

- [1 U-PROX MPX LE Wireless Security Control Panel](#)
- [2 Product Information](#)
- [3 Product Usage Instructions](#)
- [4 FAQ](#)
- [5 INTRODUCTION](#)
- [6 Functional parts of the device \(see picture\)](#)
- [7 TECHNICAL SPECIFICATIONS](#)
- [8 COMPLETE SET](#)
- [9 WARRANTY](#)
- [10 REGISTRATION](#)
- [11 RANGE TEST FOR OPTIMAL INSTALLATION LOCATION](#)
- [12 INSTALLATION](#)
- [13 INDICATION](#)
- [14 SWITCHING OFF](#)
- [15 RESETTING TO DEFAULT](#)
- [16 Documents / Resources](#)
 - [16.1 References](#)
- [17 Related Posts](#)

U-PROX

U-PROX MPX LE Wireless Security Control Panel



Product Information

Specifications

- **Partitions:** 30
- **Wireless devices in the system:** 250 zones for detectors, 250 key fobs, 150 outputs, 30 keypads, 8 repeaters
- **Users:** 250
- **Power supply:** 12 VDC @ 0.35 A
- **Battery backup:** 2500 mAh battery, up to 24 hours (2G/4G only)
- **Radio frequency:** Two ISM-band wireless interfaces, multi-speed with several channels
- **ITU region 1 (EU, UA):** 868.0 to 868.6 MHz, bandwidth 100kHz, 20 mW max., up to 4800m (in line of sight)
- **ITU region 3 (AU):** 916.5 to 917 MHz, bandwidth 100kHz, 20 mW max., up to 4800m (in line of sight)
- Secure two way communication, sabotage detection, key – 256 bits
- Wi-Fi: 2.4 GHz, Ethernet 100Mbit and LTE/GSM modem for reliable and secure two-way communication
- **BLE:** 2.4 GHz (Bluetooth low energy) for initial setup
- **Encryption key:** 256 bits
- 2.4 GHz, 802.11b/g/n, Open/WPA/WPA2/WEP 14 dBm for 802.11n MCS7, 20 dBm for 802.11b
- **LTE/GSM modem:** LTE-FDD Cat 1 – B1/B3/B5/B7/B8/B20/B28, GSM – B2/B3/B5/B8, 2 SIM cards holders
- **Permissible humidity:** up to 75%
- **Environmental class:** II (according to EN 50131)
- **Dimensions & weight:** 167 x 120 x 25.4 mm & 245 grams
- **Case colour:** white, black

Product Usage Instructions

Installation

1. Choose a suitable location for the control panel.
2. Mount the control panel using the provided mounting plate and cable clamps.
3. Connect the power supply and Ethernet cable to their respective connectors.
4. If using a SIM card for communication, insert the SIM card into the appropriate SIM card holder.

Configuration

The control panel is configured using the U-Prox Installer mobile or WEB application. Follow these steps to configure the control panel:

1. Download and install the U-Prox Installer application on your mobile device or access the WEB application.
2. Open the application and follow the on-screen instructions to connect to the control panel.
3. Once connected, you can configure various settings such as user profiles, wireless devices, and communication options.

Usage

After installation and configuration, you can use the U-Prox MPX L/LE wireless security control panel to control your home security system. Here are the main functions and features:

- Arm and disarm the security system using the On/Off button on the control panel or through the mobile or WEB application.
- Monitor the status of sensors, keypads, and key fobs connected to the control panel.
- Receive notifications and alerts on your mobile device or through the WEB application.
- Manage user profiles and access permissions.
- Interact with the security company for remote monitoring and support.

FAQ

• How many wireless devices can be connected to the U-Prox MPX L/LE control panel?

The U-Prox MPX L/LE control panel supports up to 250 wireless devices, including sensors, keypads, and key fobs.

• What is the maximum distance for wireless communication with the control panel?

The U-Prox MPX L/LE control panel supports wireless communication at a distance of up to 4800m (in line of sight).

• How long does the battery backup last?

The battery backup of the U-Prox MPX L/LE control panel can last up to 24 hours when using 2G/4G communication.

• Can I configure the control panel using a mobile device?

Yes, you can configure the control panel using the U-Prox Installer mobile application or through the WEB application.

• What communication options are available with the control panel?

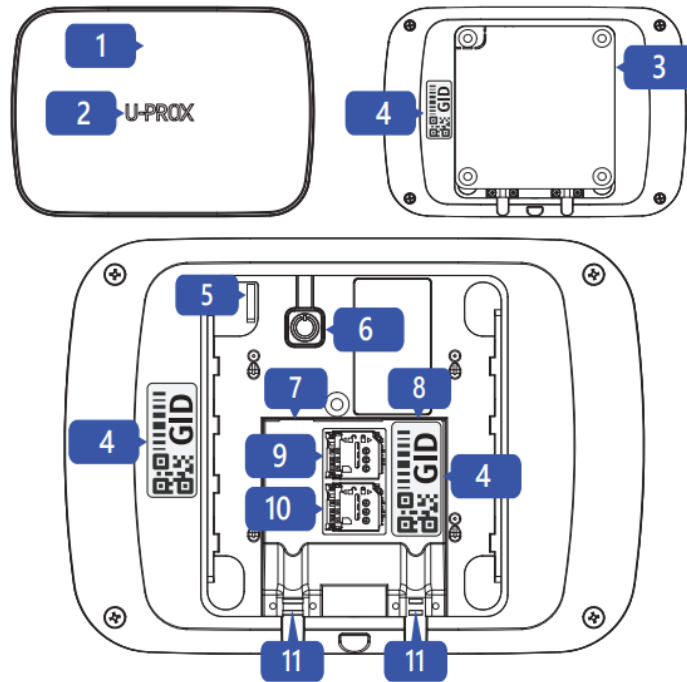
The U-Prox MPX L/LE control panel supports Ethernet, Wi-Fi, and LTE communication for reliable and secure two-way communication.

INTRODUCTION

- U-Prox MPX L/LE – is a wireless security control panel designed to control the home security system. U-Prox MPX supports connection devices (sensors, keypads, key fobs, etc.) via the U-Prox band radio frequency at a distance of up to 4800 m.
- The device interacts with the user and the security company, using Ethernet, WiFi and LTE communication for reliability.

- The device is connected to the U-Prox Cloud and is configured with the U-Prox Installer mobile or WEB application.

Functional parts of the device (see picture)



1. Device case
2. Light indicator
3. Mounting plate
4. GID – serial number of device
5. Tamper switch
6. On/Off button
7. Power supply connector
8. Ethernet cable connector (computer network)
9. SIM card holder #1
10. SIM card holder #2
11. Cable clamps

TECHNICAL SPECIFICATIONS

Partitions	30
Wireless devices in the system	250 zones for detectors 250 key fobs 150 outputs
Users	250
Power supply	12 VDC @ 0.35 A
Battery backup	2500 mAh battery, up to 24 hours (2G/4G only)
Radio frequency Users	Two ISM-band wireless interfaces, multi-speed with several channels ITU region 1 (EU, UA): 868.0 to 868.6 MHz, bandwidth 100kHz, 20 mW max., up to 4800m (in line of sight); ITU region 3 (AU): 916.5 to 917 MHz, bandwidth 100kHz, 20 mW max., up to 4800m (in line of sight). Secure two way communication, sabotage detection, key - 256 bits
Connection	Wi-Fi 2.4 GHz, Ethernet 100Mbit and LTE/GSM modem for reliable and secure two-way communication. BLE 2.4 GHz (Bluetooth low energy) for initial setup. Encryption key - 256 bits
Wi-Fi	2.4 GHz, 802.11b/g/n, Open/WPA/WPA2/WEP 14 dBm for 802.11n MCS7, 20 dBm for 802.11b
LTE/GSM modem	LTE-FDD Cat 1 - B1/B3/B5/B7/B8/B20/B28, GSM - B2/B3/B5/B8, 2 SIM cards holders
Operating temperature range	-10°C to +45°C
Permissible humidity	up to 75%
Environmental class	II (according to EN 50131)
Dimensions & weight	167 x 120 x 25.4 mm & 245 grams
Case colour	white, black

COMPLETE SET

1. U-Prox MPX L/LE;
2. One 18650 battery (pre-installed);
3. Power supply;
4. Quick start guide;
5. Ethernet cable (U-Prox MPX LE only)

CAUTION. RISK OF EXPLOSION IF BATTERY IS REPLACED BY AN INCORRECT TYPE. DISPOSE USED BATTERIES ACCORDING TO THE NATIONAL REGULATIONS.

CAUTION. THE BATTERY CAN NOT BE CHARGED AT TEMPERATURE LOWER THAN 10°C, PLEASE MAKE SURE THE POWER ADAPTER IS CONNECTED

WARRANTY

- Warranty for U-Prox devices (except batteries) is valid for two years after the purchase date.
- If the device operates incorrectly, please contact support@u-prox.systems at first, maybe it can be solved

remotely.

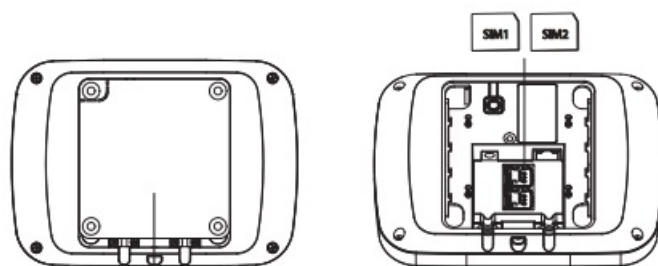
REGISTRATION

Install the app;

Sign up, if you have no account yet; Sign in

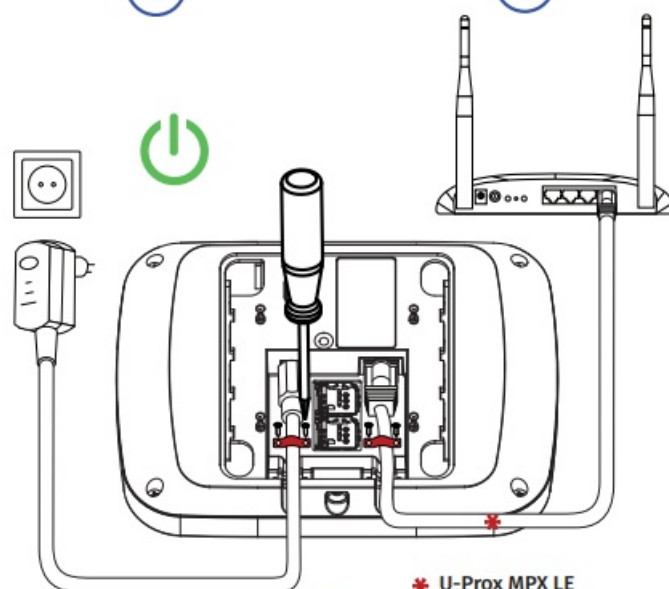


1



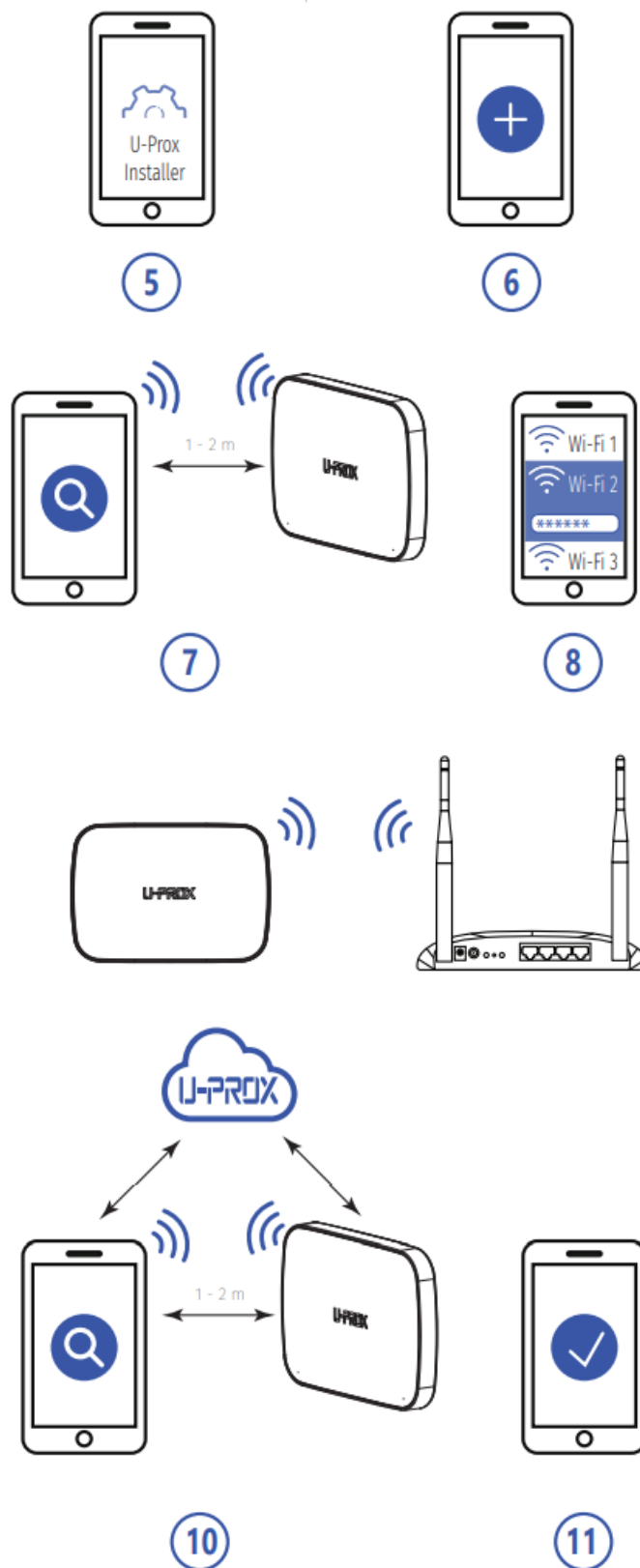
2

3



* U-Prox MPX LE

4



RANGE TEST FOR OPTIMAL INSTALLATION LOCATION

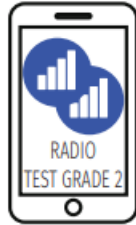
Due to Grade 2 requirement RF link works with reduction of power in 8 dB



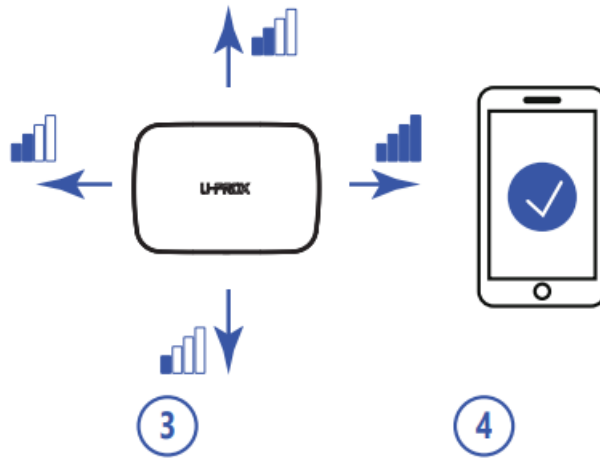
1



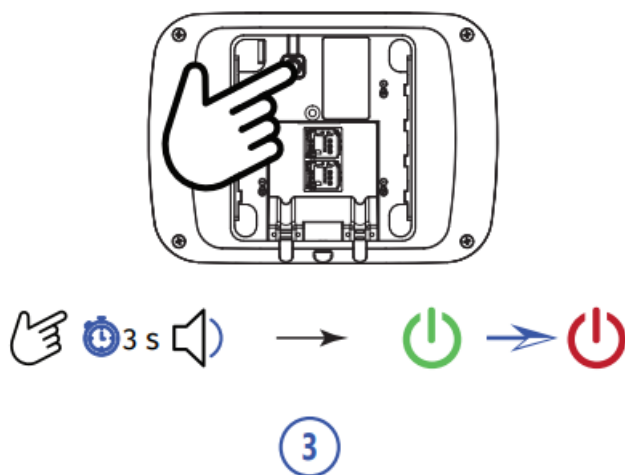
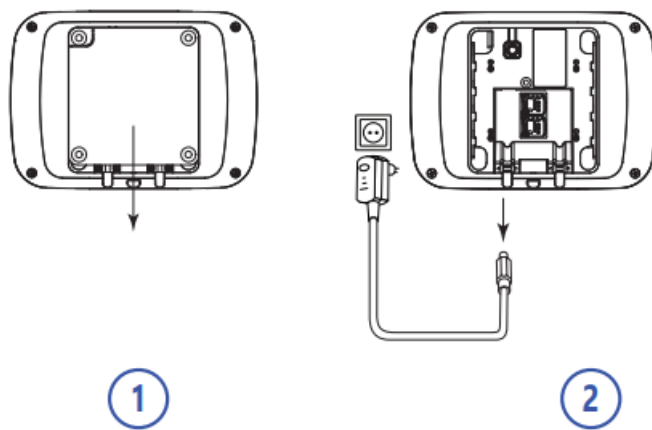
2a



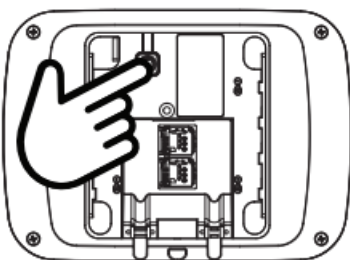
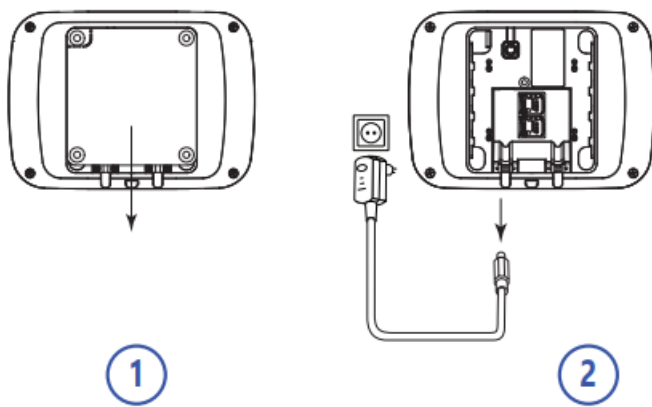
2b



INSTALLATION



RESETTING TO DEFAULT



FOR MORE INFO

- www.u-prox.systems
 - support@u-prox.systems
 - www.u-prox.systems/doc_mpx2
-

Documents / Resources

	<p>U-PROX MPX LE Wireless Security Control Panel [pdf] User Manual MPX L, MPX LE, MPX LE Wireless Security Control Panel, MPX LE, Wireless Security Control Panel, Security Control Panel, Control Panel</p>
---	--

References

- [User Manual](#)