

**U-PROX  
MPX L  
Wireless  
Security  
Control Panel**



# U-PROX MPX L Wireless Security Control Panel User Manual

[Home](#) » [U-PROX](#) » U-PROX MPX L Wireless Security Control Panel User Manual 

## Contents

- [1 U-PROX MPX L Wireless Security Control Panel](#)
- [2 Product Usage Instructions](#)
- [3 PRODUCT OVERVIEW](#)
- [4 REGISTRATION](#)
- [5 RANGE TEST FOR OPTIMAL INSTALLATION LOCATION](#)
- [6 INSTALLATION](#)
- [7 INDICATION](#)
- [8 SWITCHING OFF](#)
- [9 RESETTING TO DEFAULT](#)
- [10 Functional Parts](#)
- [11 TECHNICAL SPECIFICATION](#)
- [12 COMPLETE SET](#)
- [13 WARRANTY](#)
- [14 Frequently Asked Questions](#)
- [15 Documents / Resources](#)
  - [15.1 References](#)

# U-PROX

**U-PROX MPX L Wireless Security Control Panel**



## Specifications

- Partitions: 30
- Wireless devices in the system:
  - 250 zones for detectors
  - 30 keypads
  - 250 key fobs
  - 8 repeaters
  - 150 outputs
- Users: 250
- Power supply: 12 VDC @ 0.35 A
- Battery backup: 2500 mAh battery, up to 24 hours (2G/4G only)
- Radio frequency Connection Wi-Fi:
  - Two ISM-band wireless interfaces, multi-speed, with several channels
  - ITU region 1: 868.0 to 868.6 MHz, (EU, UA) 869.0 to 869.4 (MA), bandwidth 100kHz, 20 mW max., up to 4800m (in line of sight)
  - ITU region 3 (AU): 916.5 to 917 MHz, bandwidth 100kHz, 20 mW max., up to 4800m (in line of sight)
- Secure two-way communication, sabotage detection, key – 256 bits
- Wi-Fi 2.4 GHz, Ethernet 100Mbit and LTE/GSM modem for reliable and secure two-way communication
- BLE 2.4GHz (Bluetooth LE) for initial setup. Encryption key – 256 bits
- LTE/GSM modem: LTE-FDD Cat 1 – B1/B3/B5/B7/B8/B20/B28, GSM -B2/B3/B5/B8, 2 SIM cards holders
- Permissible humidity up to 75%
- Environmental class II (according to EN 50131-1)
- Security grade: 2
- Dimensions & weight: 167 x 120 x 25.4 mm & 245 grams
- Case colour: white, black

## Product Usage Instructions

### Installation and Setup

1. Ensure the U-PROX MPX L/LE is powered off before installation.
2. Mount the device using the included mounting plate at a suitable location.
3. Connect the power supply and Ethernet cable to their respective connectors on the device.
4. If utilizing a SIM card for communication, insert it into one of the SIM card holders.
5. Power on the device and follow the setup instructions provided in the user manual or mobile app.

### **Connecting Devices**

The U-PROX MPX L/LE supports connection devices such as sensors, keypads, and key fobs via the U-PROX band radio frequency. Ensure these devices are compatible with the system before connecting.

### **Configuration and Monitoring**

The device is configured using the U-PROX Installer mobile or web application. Use this application to set up partitions, add users, configure wireless devices, and monitor the security system.

### **Maintenance and Troubleshooting**

Regularly check the device for any tampering or faults. In case of issues, refer to the user manual for troubleshooting steps or contact customer support for assistance.

[www.u-prox.systems](http://www.u-prox.systems)

[support@u-prox.systems](mailto:support@u-prox.systems)

[www.u-prox.systems/doc\\_mpx2](http://www.u-prox.systems/doc_mpx2)



### **WIRELESS SECURITY CONTROL PANEL**

Is a part of the U-PROX security alarm system

#### **User manual**

Manufacturer: LLC INTEGRATED TECHNICAL VISION

Mykoly Hrinchenka str. 2/1, 03038, Kyiv, Ukraine

### **PRODUCT OVERVIEW**

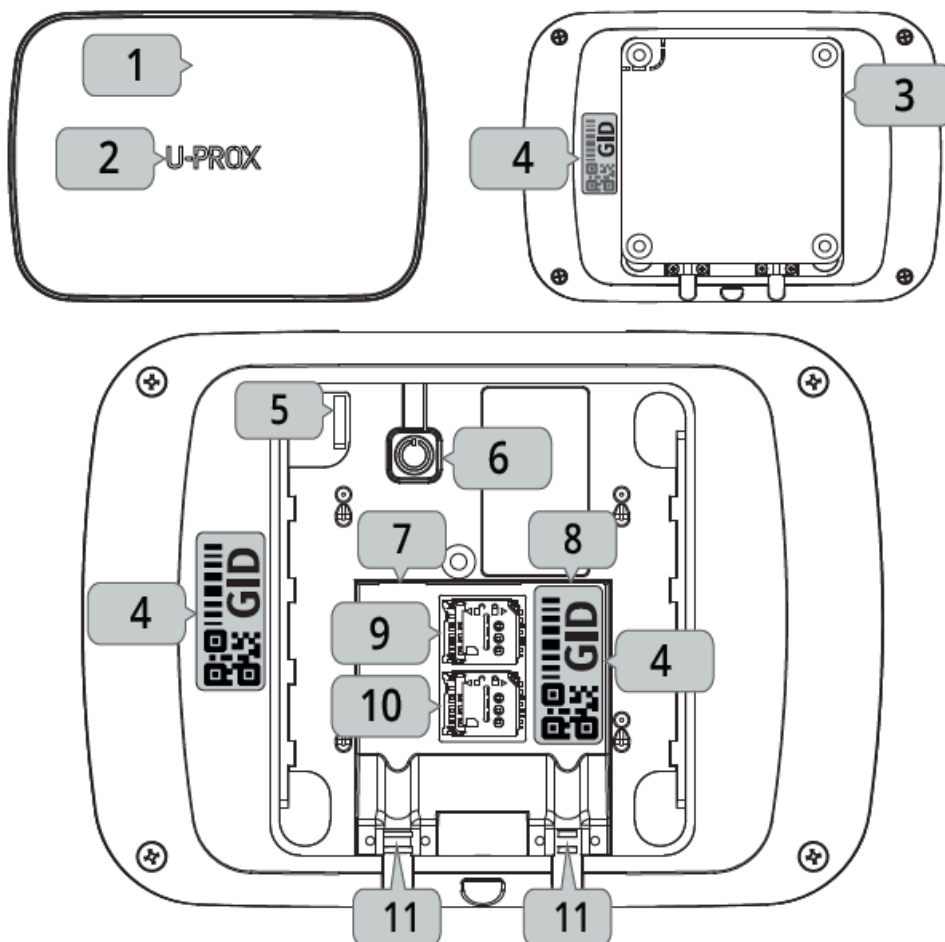
#### **U- PROX MPX L**

- U-PROX PIR Cam – 250
- Wi-Fi
- LTE (4G/2G)

#### **U-PROX MPX LE**

- U-PROX PIR Cam – 250
- Wi-Fi

- LTE (4G/2G)
- Ethernet

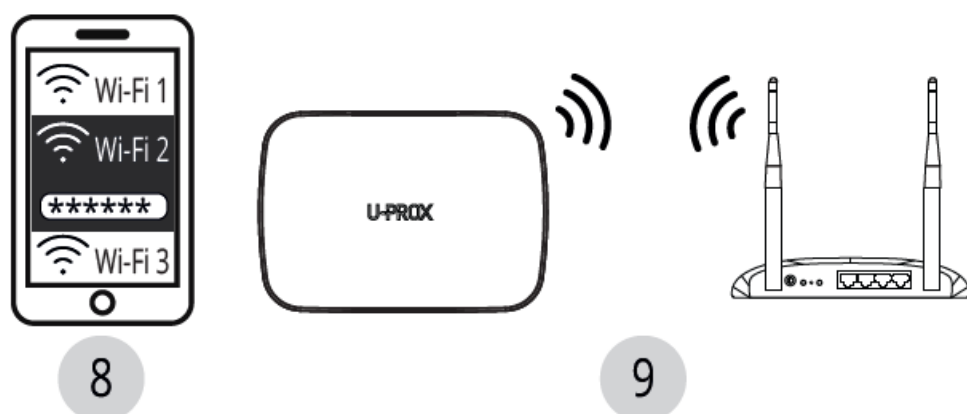
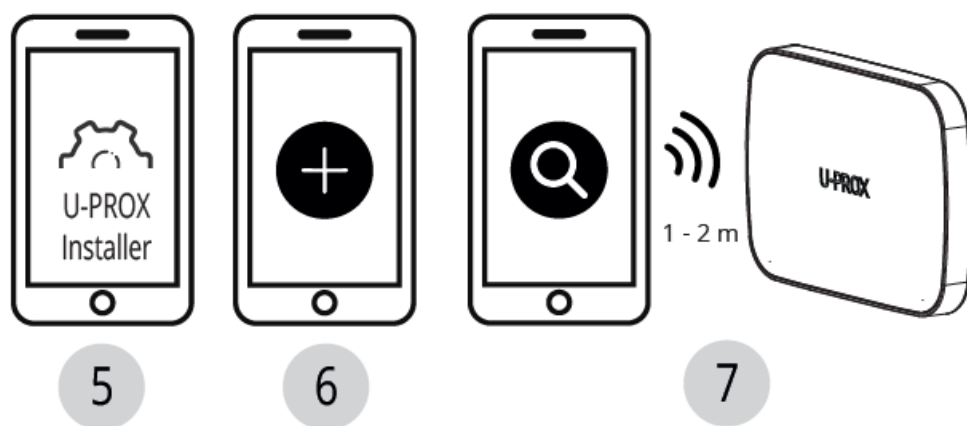
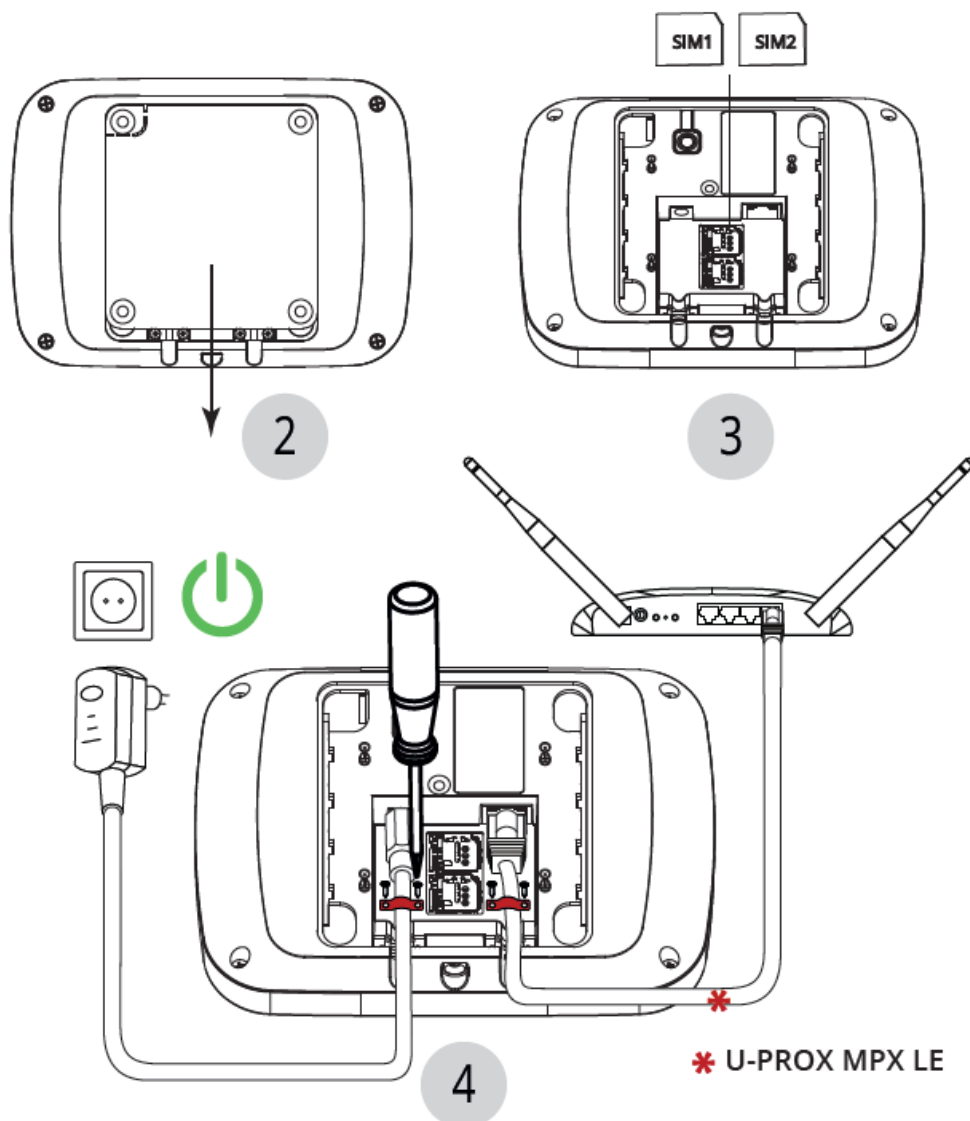


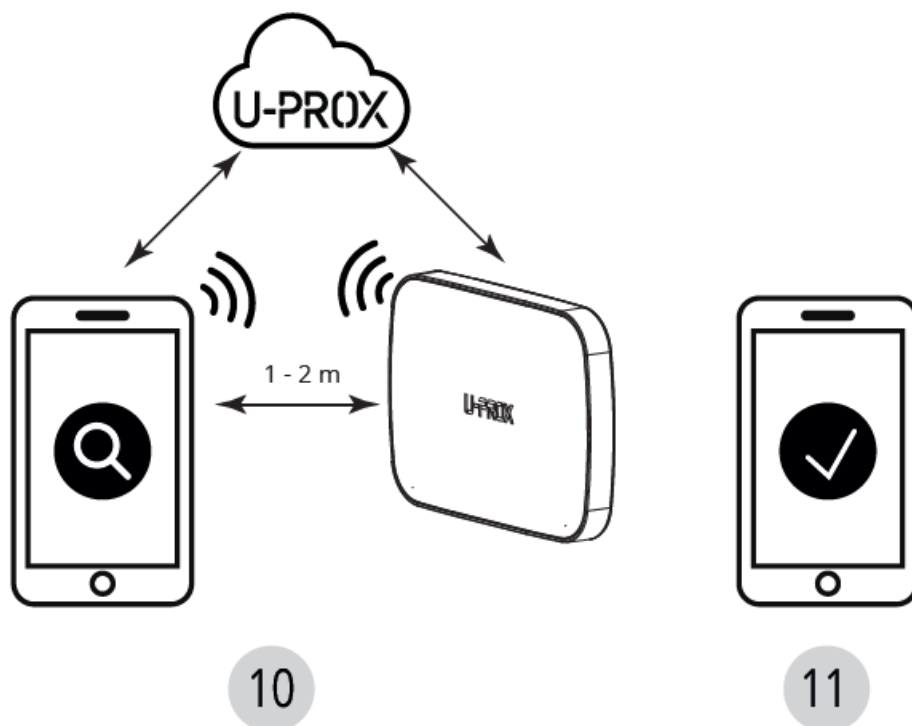
## REGISTRATION

Install the app; Sign up, if you have no account yet; Sign in

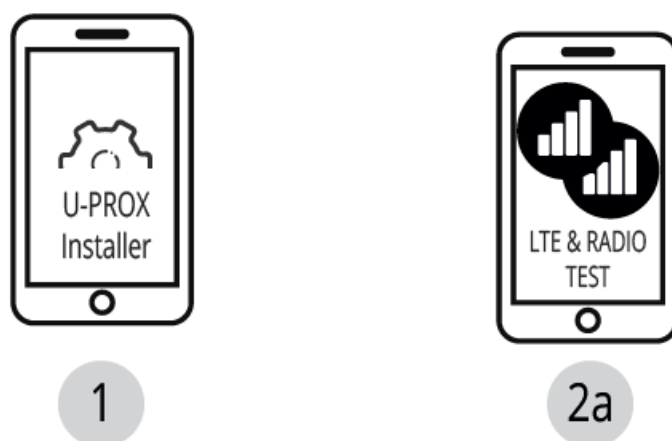


1





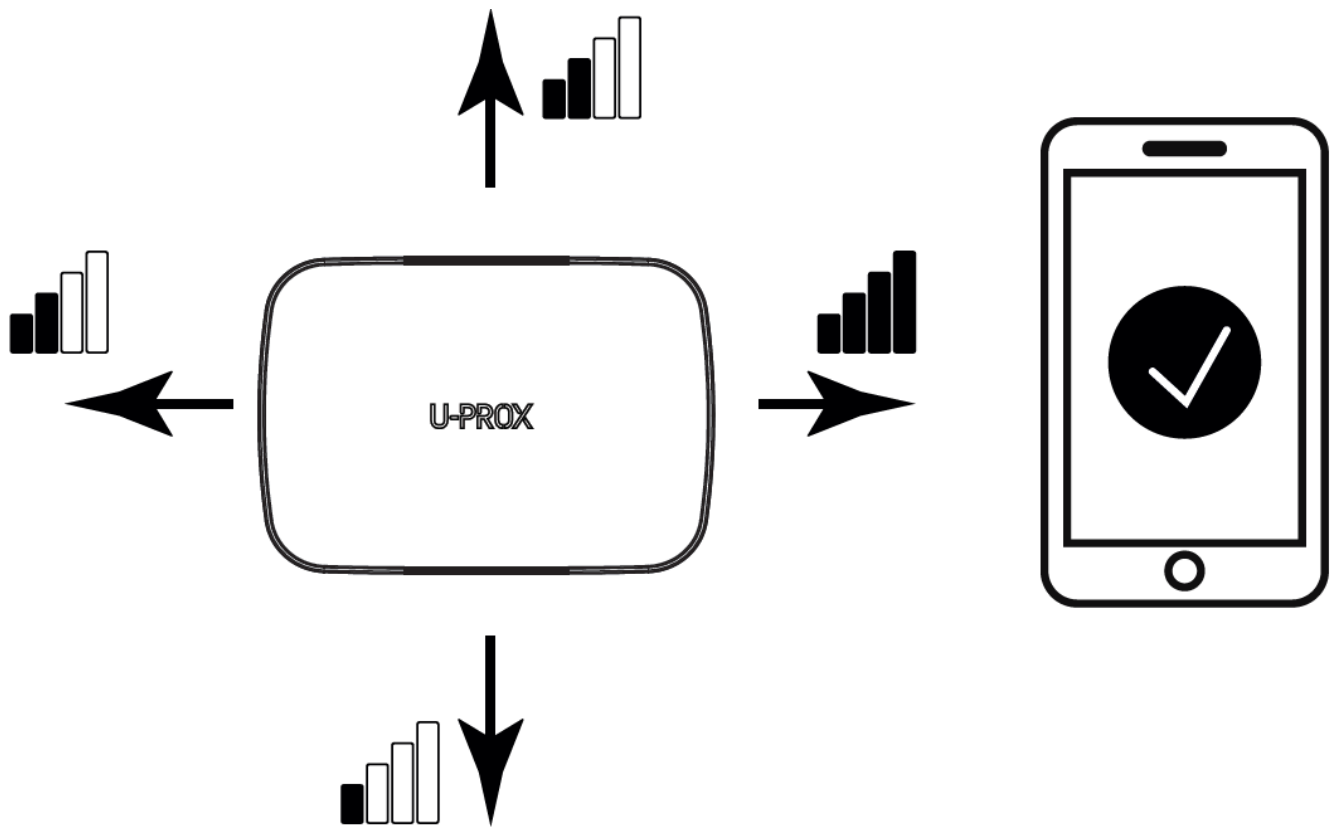
## RANGE TEST FOR OPTIMAL INSTALLATION LOCATION

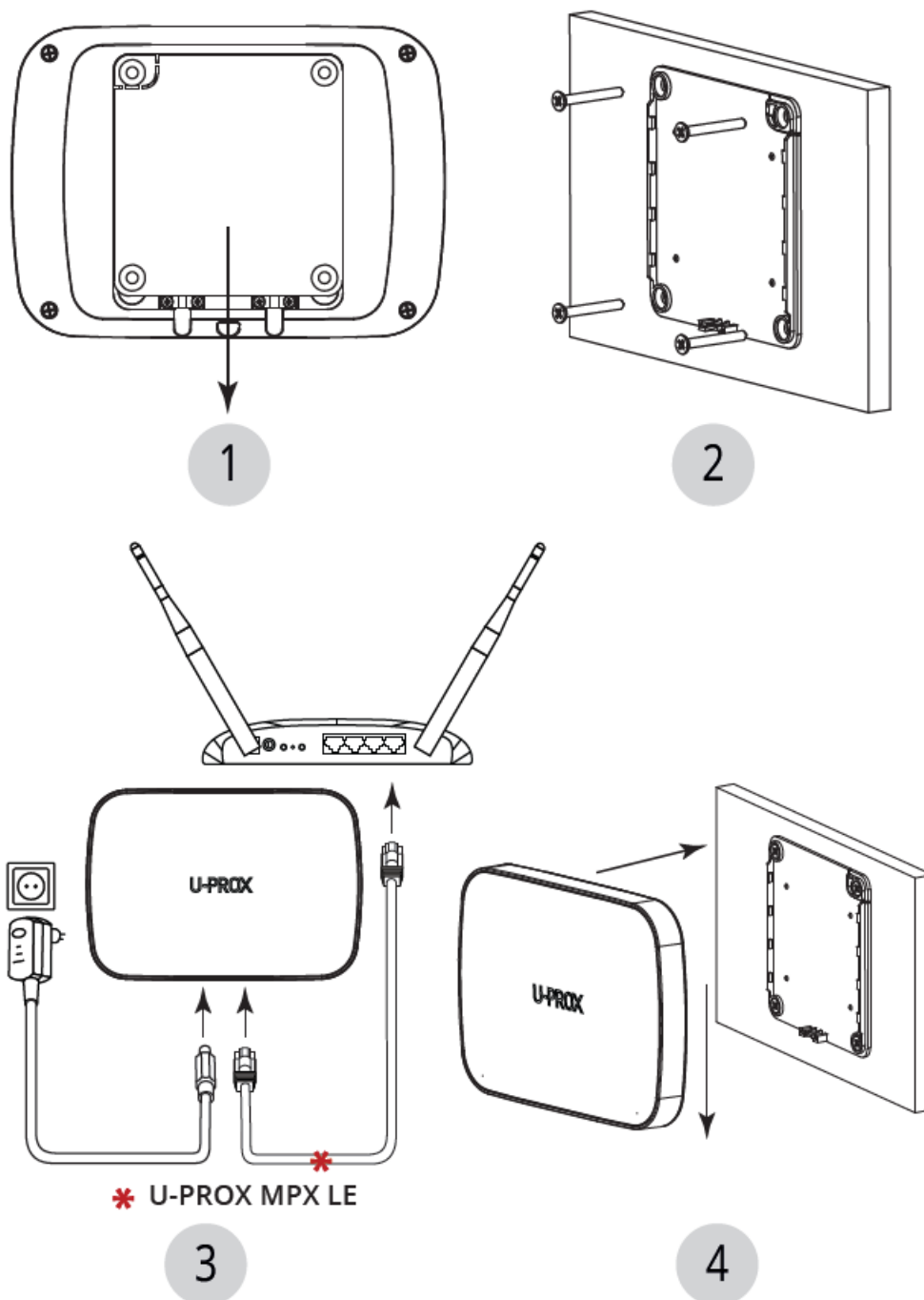


Due to Grade 2 requirement RF link works with reduction of power in 8 dB

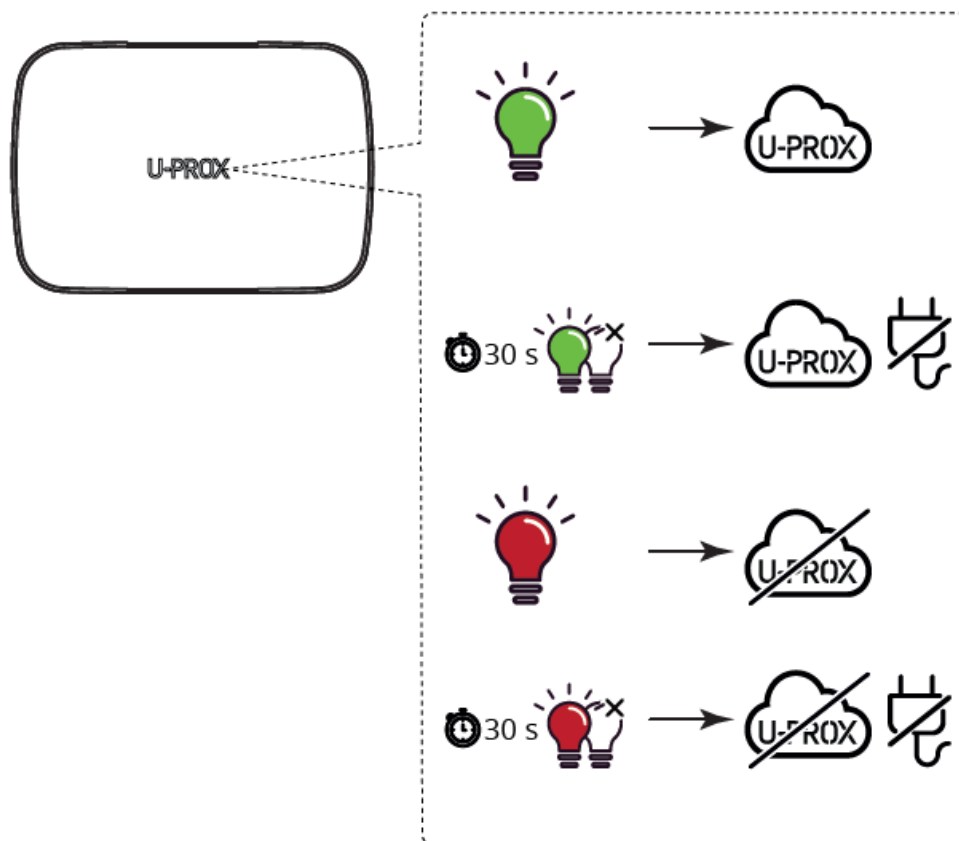


## INSTALLATION

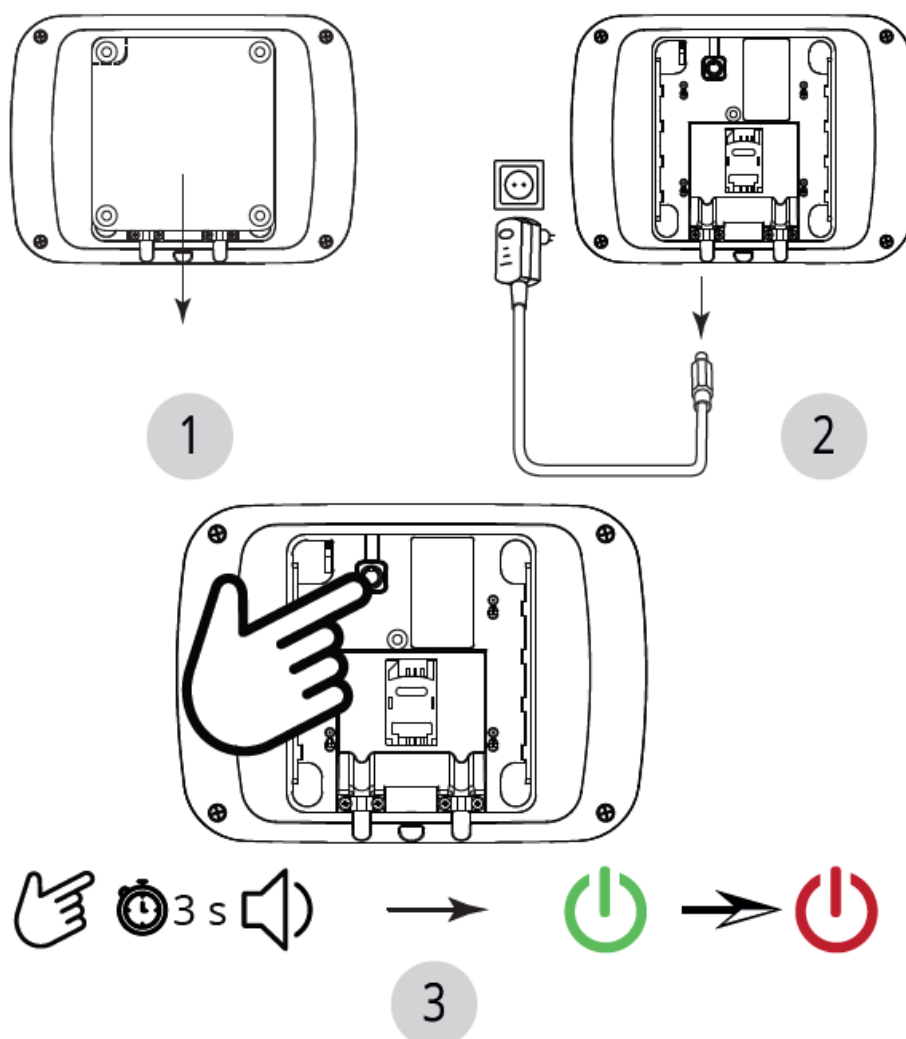




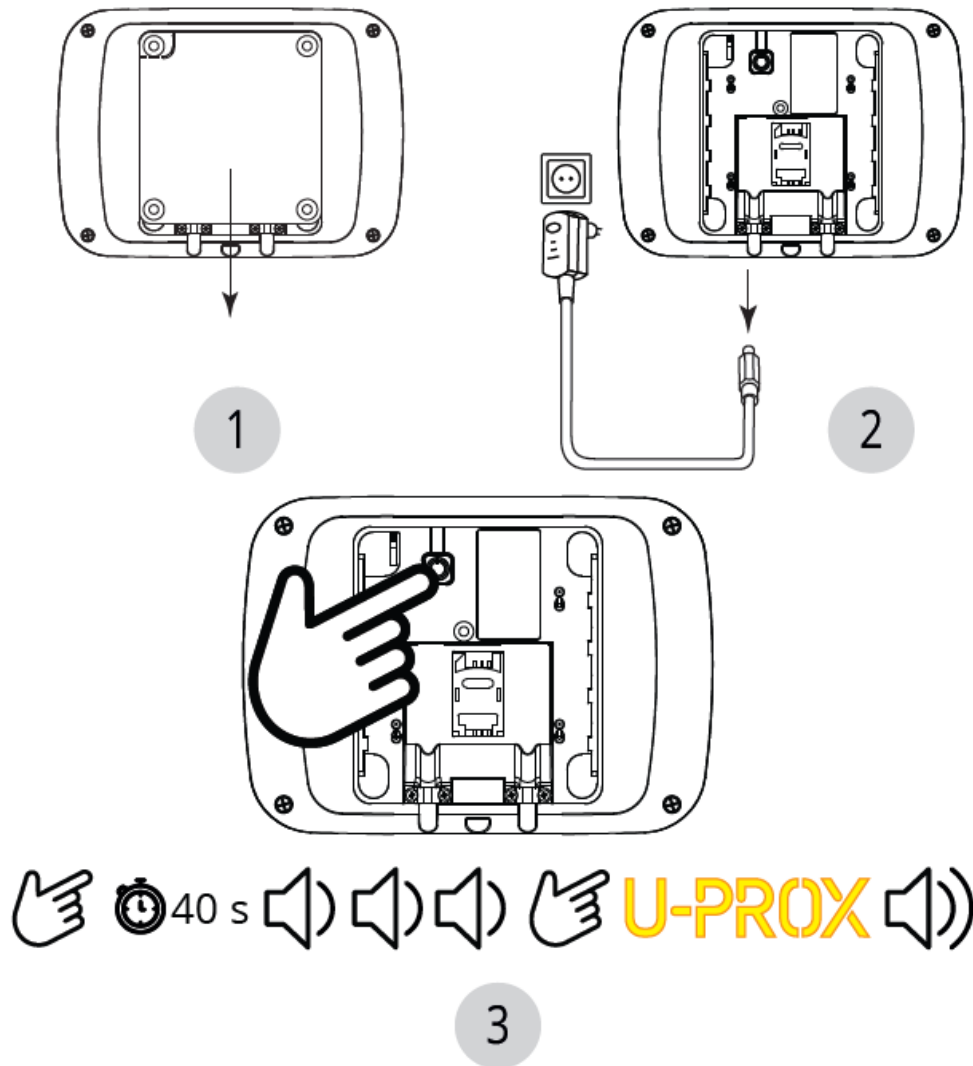
INDICATION



## SWITCHING OFF



## RESETTING TO DEFAULT



U-PROX MPX L/LE – is a wireless security control panel designed to control the home security system. U-PROX MPX supports connection devices (sensors, keypads, key fobs, etc.) via the U-PROX band radio frequency at a distance of up to 4800 m.

The device interacts with the user and the security company, using Ethernet, WiFi and LTE communication for reliability.



The device is connected to the U-PROX Cloud and is configured with the U-PROX Installer mobile or WEB application.

## Functional Parts

Functional parts of the device (see picture)

1. Device case
2. Light indicator
3. Mounting plate
4. GID – serial number of device
5. Tamper switch
6. On/Off button
7. Power supply connector
8. Ethernet cable connector (computer network)
9. SIM card holder #1
10. SIM card holder #2
11. Cable clamps

## TECHINAL SPECIFICATION

<b>Partitions</b>	30
<b>Wireless devices in the system</b>	250 zones for detectors 250 key fobs 150 outputs
<b>Users</b>	250
<b>Power supply</b>	12 VDC @ 0.35 A
<b>Battery backup</b>	2500 mAh battery, up to 24 hours (2G/4G only)
<b>Radio frequency</b>	Two ISM-band wireless interfaces, multi-speed, with several channels ITU region 1: 868.0 to 868.6 MHz, (EU, UA) 869.0 to 869.4 (MA), bandwidth 100kHz, 20 mW max., up to 4800m (in line of sight); ITU region 3 (AU): 916.5 to 917 MHz, bandwidth 100kHz, 20 mW max., up to 4800m (in line of sight). Secure two way communication, sabotage detection, key - 256 bits
<b>Connection</b>	Wi-Fi 2.4 GHz, Ethernet 100Mbit and LTE/GSM modem for reliable and secure two-way communication. BLE 2.4GHz (Bluetooth LE) for initial setup. Encryption key - 256 bits
<b>Wi-Fi</b>	2.4GHz, 802.11b/g/n, Open/WPA/WPA2/WEP 14dBm for 802.11n MCS7, 20dBm for 802.11b
<b>LTE/GSM modem</b>	LTE-FDD Cat 1 - B1/B3/B5/B7/B8/B20/B28, GSM - B2/B3/B5/B8, 2 SIM cards holders
<b>Operating temperature range</b>	-10°C to +45°C
<b>Permissible humidity</b>	up to 75%
<b>Environmental class</b>	II (according to EN 50131-1)
<b>Security grade</b>	2
<b>Dimensions &amp; weight</b>	167 x 120 x 25.4 mm & 245 grams
<b>Case colour</b>	white, black

## COMPLETE SET

1. U-PROX MPX L/LE;
2. One 18650 battery (pre-installed);
3. Power supply;
4. Quick start guide;
5. Ethernet cable (U-PROX MPX LE only)

## CAUTION.

- RISK OF EXPLOSION IF BATTERY IS REPLACED BY AN INCORRECT TYPE. DISPOSE USED BATTERIES ACCORDING TO THE NATIONAL REGULATIONS
- THE BATTERY CAN NOT BE CHARGED AT TEMPERATURE LOWER THAN 10°C, PLEASE MAKE SURE THE POWER ADAPTER IS CONNECTED

## WARRANTY

Warranty for U-PROX devices (except batteries) is valid for two years after the purchase date. If the device operates incorrectly, please contact [support@u-prox.systems](mailto:support@u-prox.systems) at first, maybe it can be solved remotely.



LLC INTEGRATED TECHNICAL VISION declares, that the U-PROXMPX L/LE complies with the Radio Equipment Directive 2014/53/EU and with the Directive 2011/65/EU (RoHS). The original Declaration of Conformity is available on the website [www.security.u-prox.systems](http://www.security.u-prox.systems) in the Certificates section.

## Frequently Asked Questions

### **Q: How far can the U-PROX MPX L/LE communicate wirelessly?**

**A:** The device supports wireless communication at distances of up to 4800 meters in line of sight.

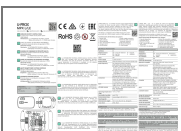
### **Q: How many wireless devices can be connected to the system?**

**A:** The system can support up to 250 zones for detectors, 30 keypads, 250 key fobs, and 8 repeaters.

### **Q: What is the battery backup duration of the device?**

**A:** The device comes with a 2500 mAh battery providing up to 24 hours of backup power when operating on 2G/4G networks.

## Documents / Resources



[U-PROX MPX L Wireless Security Control Panel](#) [pdf] User Manual  
MPX L, MPX LE, MPX L Wireless Security Control Panel, MPX L, Wireless Security Control Panel, Security Control Panel, Control Panel

## References

- [User Manual](#)

[Manuals+](#), [Privacy Policy](#)

This website is an independent publication and is neither affiliated with nor endorsed by any of the trademark owners. The "Bluetooth®" word mark and logos are registered trademarks owned by Bluetooth SIG, Inc. The "Wi-Fi®" word mark and logos are registered trademarks owned by the Wi-Fi Alliance. Any use of these marks on this website does not imply any affiliation with or endorsement.