



# U-PROX MP WiFi Wireless Security Control Panel User Manual

[Home](#) » [U-PROX](#) » U-PROX MP WiFi Wireless Security Control Panel User Manual 

## Contents

- [1 U-PROX MP Wifi Wireless Security Control Panel](#)
- [2 Functional parts of the device \(see picture\)](#)
- [3 TECHNICAL SPECIFICATIONS](#)
- [4 REGISTRATION](#)
- [5 INSTALLATION](#)
- [6 Documents / Resources](#)
- [7 Related Posts](#)

## UPROXX

### U-PROX MP Wifi Wireless Security Control Panel



#### Manufacturer:

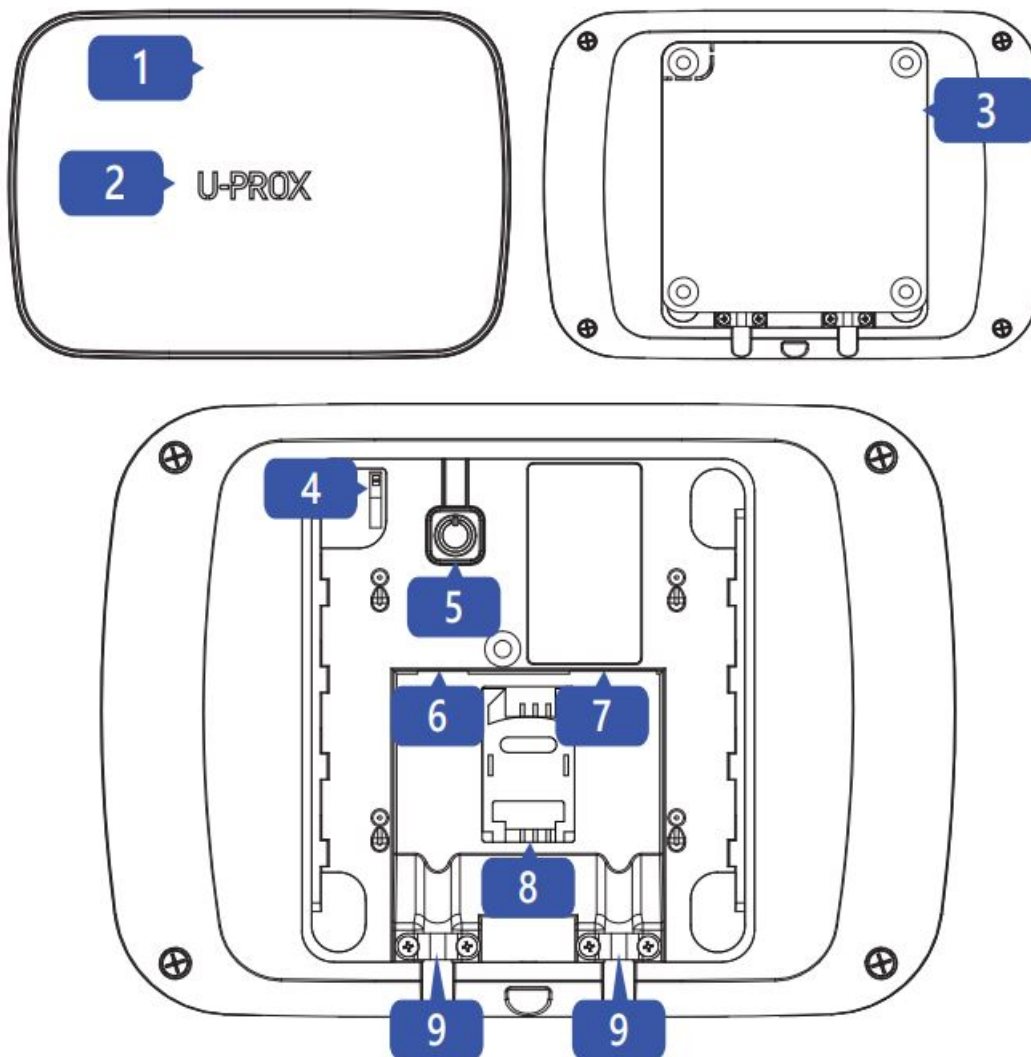
Integrated Technical Vision Ltd. Vasyl Lypkivsky str. 1, 03035, Kyiv, Ukraine

## U-Prox MP

It is a wireless security control panel designed to EN control the home security system. U-Prox MP supports connection of up to 200 devices (sensors, keypads, key fobs, etc.) via the U-Prox band radio frequency at a distance of up to 4800 m. The device interacts with the user and the security company, using Ethernet and GSM/GPRS communication for reliability. The device is connected to the U-Prox Cloud and is configured with the U-Prox Installer mobile or WEB application.

### Functional parts of the device (see picture)

1. Device case
2. Light indicator
3. Mounting plate
4. Tamper switch
5. On/Off button
6. Power supply connector
7. Ethernet cable connector
  - (computer network)
8. SIM card holder
9. Cable clamps



## TECHNICAL SPECIFICATIONS

Partitions	30
Wireless devices in the system	200
	99 detectors
	16 keypads
	60 key fobs
	8 repeaters
Users	60
Power supply	12 VDC @ 0.35 A
Battery backup	2500 mAh battery, up to 24 hours
Radio frequency	Two ISM-band wireless interfaces, multi-speed with several channels <b>ITU region 1 (EU, UA):</b> 868.0 to 868.6 MHz, bandwidth 100kHz, 20 mW max., up to 4800m (in line of sight); <b>ITU region 3 (AU):</b> 916.5 to 917 MHz, bandwidth 100kHz, 20 mW max., up to 4800m (in line of sight). Secure two way communication, sabotage detection, key - 256 bits
Connection	Wi-Fi 2.4GHz and GSM/GPRS modem for reliable and secure two way communication, key - 256 bits
Wi-Fi	2.4 GHz, 802.11b/g/n, Open/WPA/WPA2/WEP 14 dBm for 802.11n MCS7, 20 dBm for 802.11b
GSM/GPRS	850/900/1800/1900 MHz, Class 4 (2 W @ 850/900MHz), Class 1 (1 W @ 1800/1900MHz)
Operating temperature range	0°C to +45°C
Dimensions & weight	167 x 120 x 25.4 mm & 245 grams
Case colour	white, black

#### COMPLETE SET

1. U-Prox MP;
2. One 18650 battery (pre-installed);
3. Power supply;
4. Ethernet cable; 5. Quick start guide

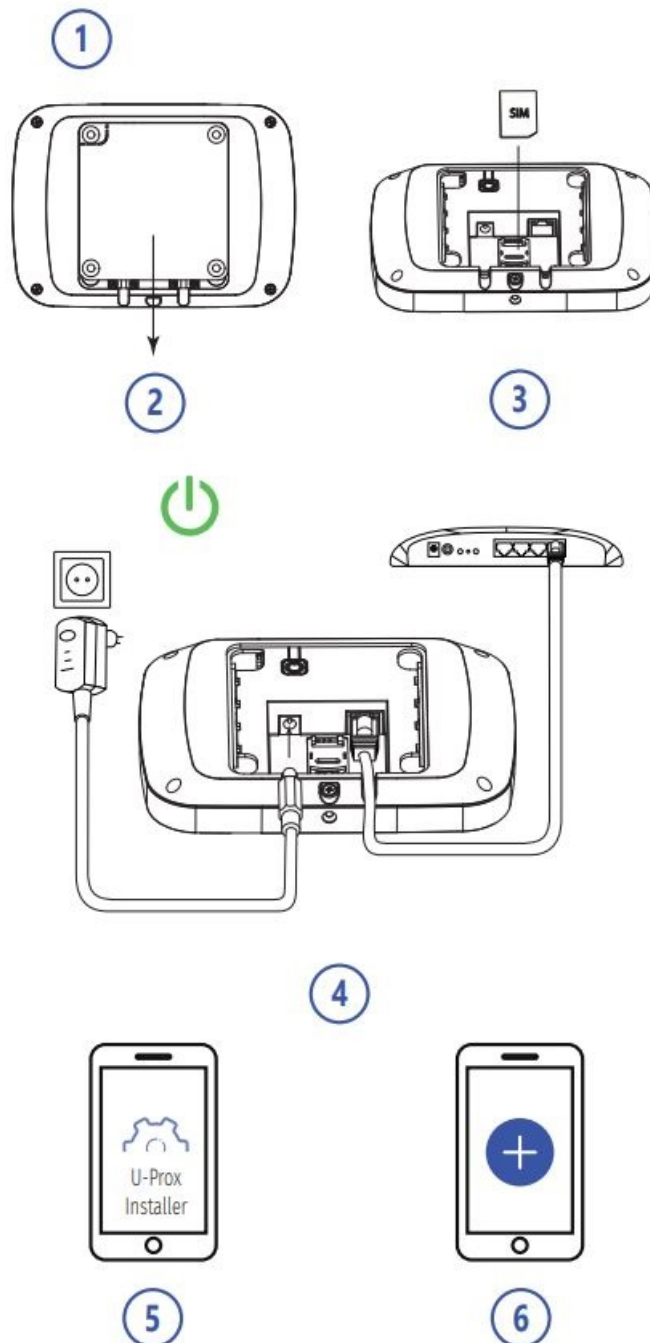
**CAUTION.** RISK OF EXPLOSION IF BATTERY IS REPLACED BY AN INCORRECT TYPE. DISPOSE USED BATTERIES ACCORDING TO THE NATIONAL REGULATIONS

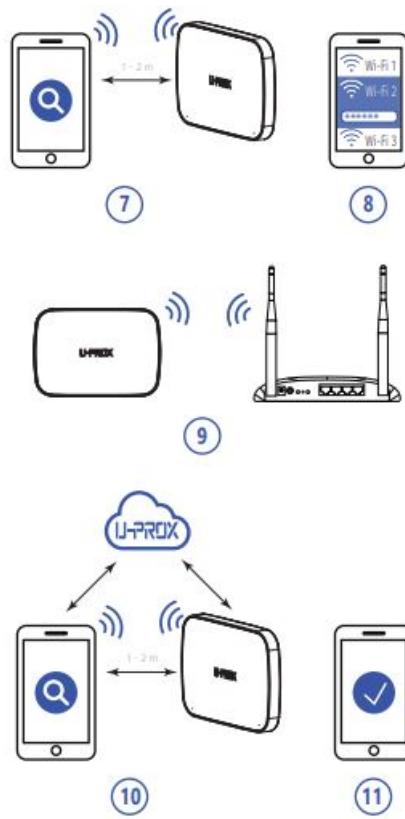
**Warranty for U-Prox devices** (except batteries) is valid for two years after the purchase date. If the device operates incorrectly, please contact [support@u-prox.systems](mailto:support@u-prox.systems) at first, maybe it can be solved remotely.

## REGISTRATION

### Install the app;

Sign up, if you have no account yet; Sign in





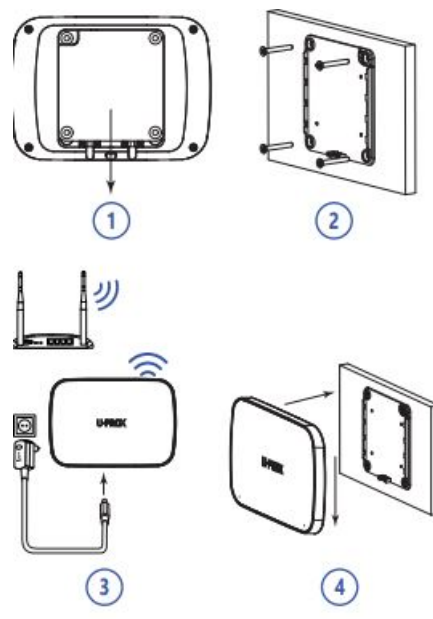
#### RANGE TEST FOR OPTIMAL INSTALLATION LOCATION



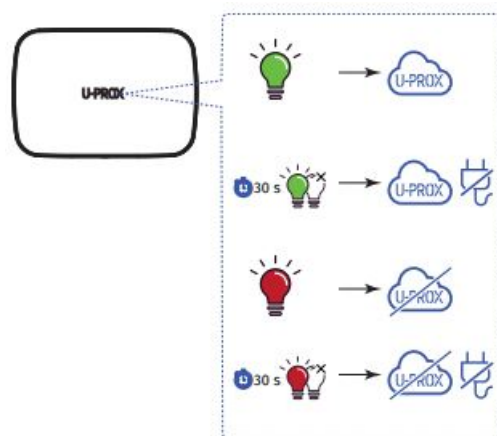
Due to Grade 2 requirement, RF link works with reduction of power in 8 dB



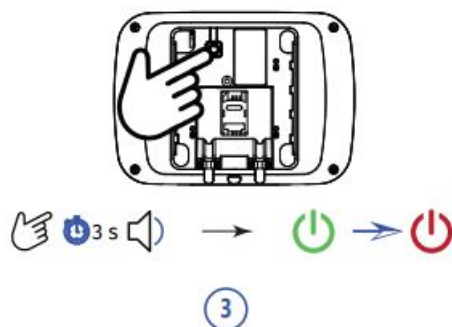
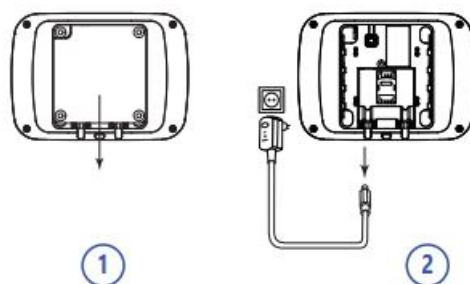
## INSTALLATION



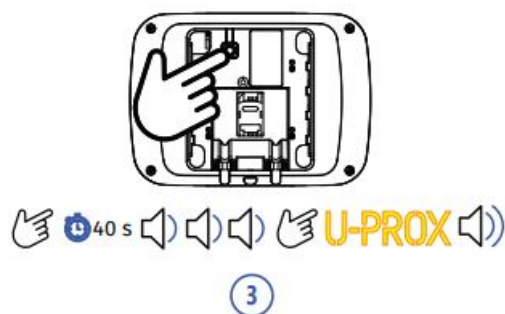
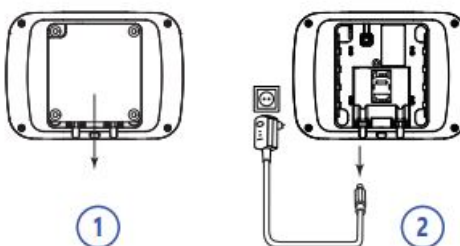
## INDICATION



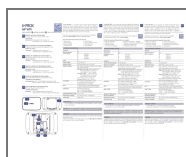
## SWITCHING OFF



## RESETTING TO DEFAULT



## Documents / Resources



[U-PROX MP WiFi Wireless Security Control Panel](#) [pdf] User Manual  
MP WiFi, Wireless Security Control Panel, MP WiFi Wireless Security Control Panel