

TZONE TT19 4G and 5G Real Time Temperature Humidity Light!



# TZONE TT19 4G and 5G Real Time Temperature Humidity Light User Guide

[Home](#) » [Tzone](#) » TZONE TT19 4G and 5G Real Time Temperature Humidity Light User Guide 

## Contents

- [1 TZONE TT19 4G and 5G Real Time Temperature Humidity Light](#)
- [2 Steps how to run the device easily](#)
- [3 Documents / Resources](#)
  - [3.1 References](#)
- [4 Related Posts](#)

# TZONE

**TZONE TT19 4G and 5G Real Time Temperature Humidity Light**

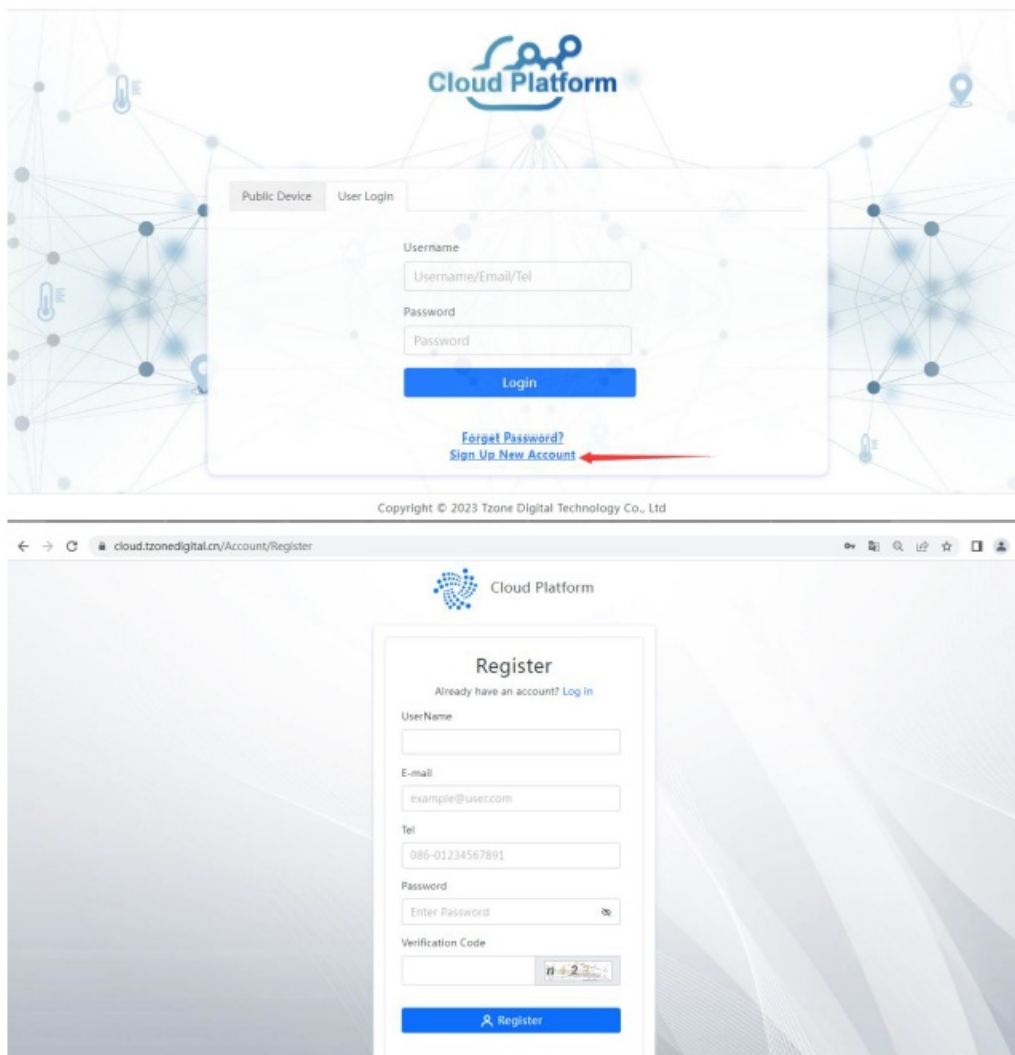


TT19/TT19EX Quick Setup Use Manual V1.1

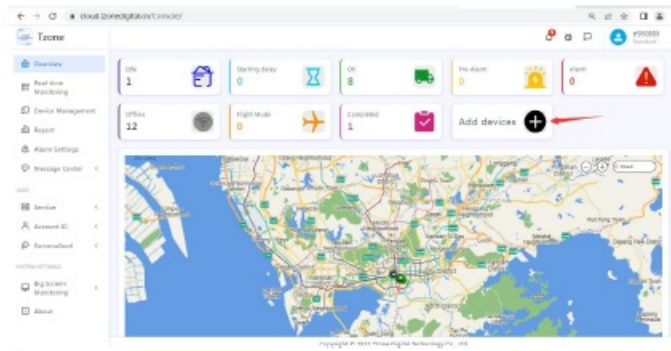
### Steps how to run the device easily

1. Step1: Register an account on the TZONE cloud platform.

TZONE cloud platform Address <http://cloud.tzonedigital.com/>



2. Step2: After registering an account, add the device ID to the account



**Add**

\* Device Name: TT19EX-224

\* Device ID: 190124010000224

Additional Code: 48387911

Note: Please enter the additional code on the back of the device! If there do not have the additional code, just make it blank

\* Group: Default

Remark:

Device Address: Shi Min Zhong Xin C Qu Fuzhong 3rd Rd,

Note: Drag the blue marker on the map to set the device address.

Cancel Save

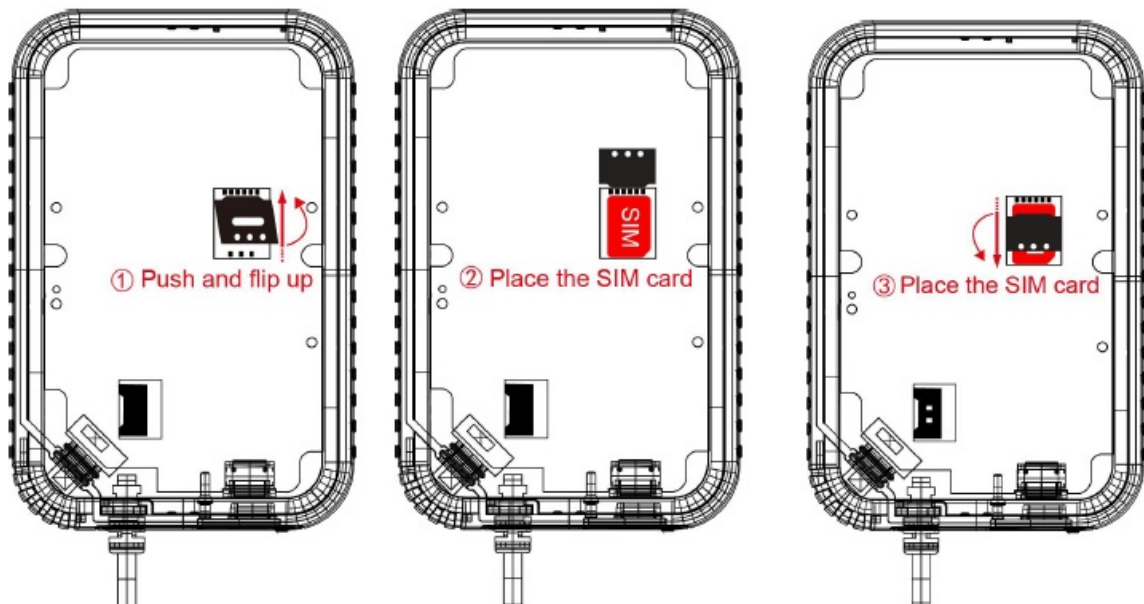
Keywords: Device Name/Device ID

Q Over

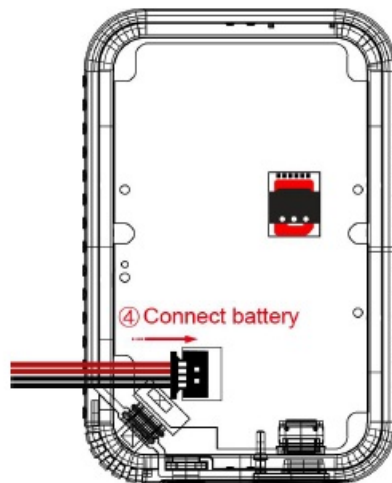
| # | Device Name | Device ID       | Model  | Group   | Create Time         | Expiration          | Status    | Operator |
|---|-------------|-----------------|--------|---------|---------------------|---------------------|-----------|----------|
| 1 | TT19EX-224  | 190124010000224 | TT19EX | Default | 2024/04/18 16:52:20 | 2025/04/18 16:52:20 | Online    |          |
| 2 | TT19EX-02   | 190124010000002 | TT19EX | Default | 2024/04/18 16:57:43 | 2025/04/18 16:57:43 | Online    |          |
| 3 | TT19EX      | 190124010000003 | TT19EX | Default | 2024/04/18 12:28:35 | 2025/07/17 12:28:35 | Online    |          |
| 4 | TT19EX      | 190124010000004 | TT19EX | Default | 2024/05/28 11:07:47 | 2025/05/28 11:07:47 | Offline   |          |
| 5 | TT19EX      | 190124010000005 | TT19EX | Default | 2024/05/28 10:40:02 | 2025/05/28 10:40:02 | Offline   |          |
| 6 | TT19EX      | 190124010000006 | TT19EX | Default | 2024/05/28 17:58:42 | 2024/06/25 17:58:42 | Offline   |          |
| 7 | TT19EX      | 190124010000007 | TT19EX | Default | 2024/05/28 10:27:58 | 2025/06/20 10:27:58 | Offline   |          |
| 8 | TT19EX      | 190124010000008 | TT19EX | Default | 2024/05/19 12:19:27 | 2024/06/19 12:19:27 | Completed |          |

Note: If the device you purchased already has a card and battery plugged, please ignore steps 3, 4, and 5.

3. Step 3: After getting the machine, the user needs to insert the SIM card first, as shown in the figure below.




4. Step4 Plug the battery, as shown in the figure below



5. Step5 Install the shell and lock the screws.

6. Step6 Device on, short press the “START” button before turning on the machine. If the LCD displays “OFF”, it means the machine is turned off; At this time, press and hold the “START” button to turn on the machine, the “OK” light will be green, and the LCD will display the content, which means the machine is turned on, as shown in the figure below:

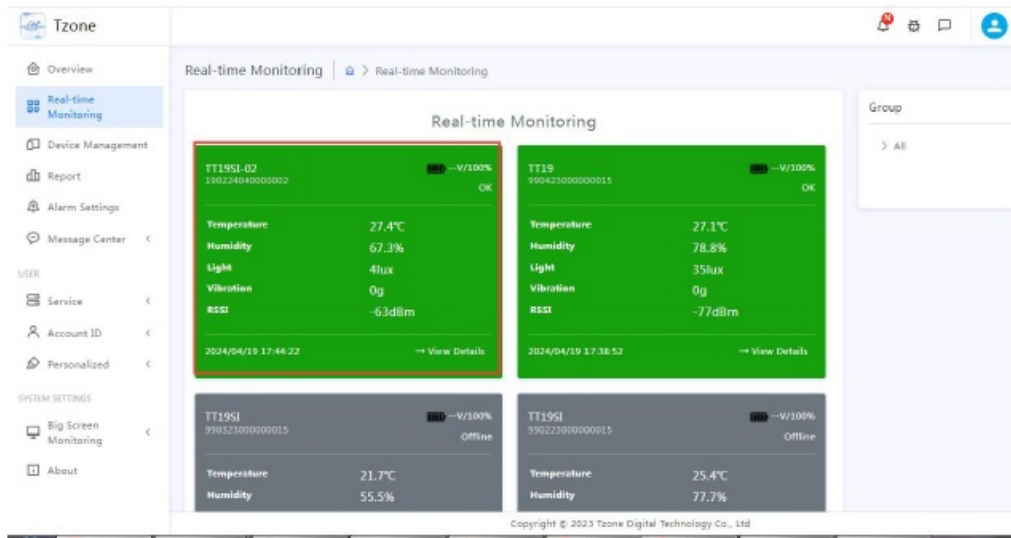


7. Step7: Install the device at the temperature monitoring site and send the data,if the signal grid“ ”  is displayed in the upper left corner of the device, it means that the machine has successfullsent data.

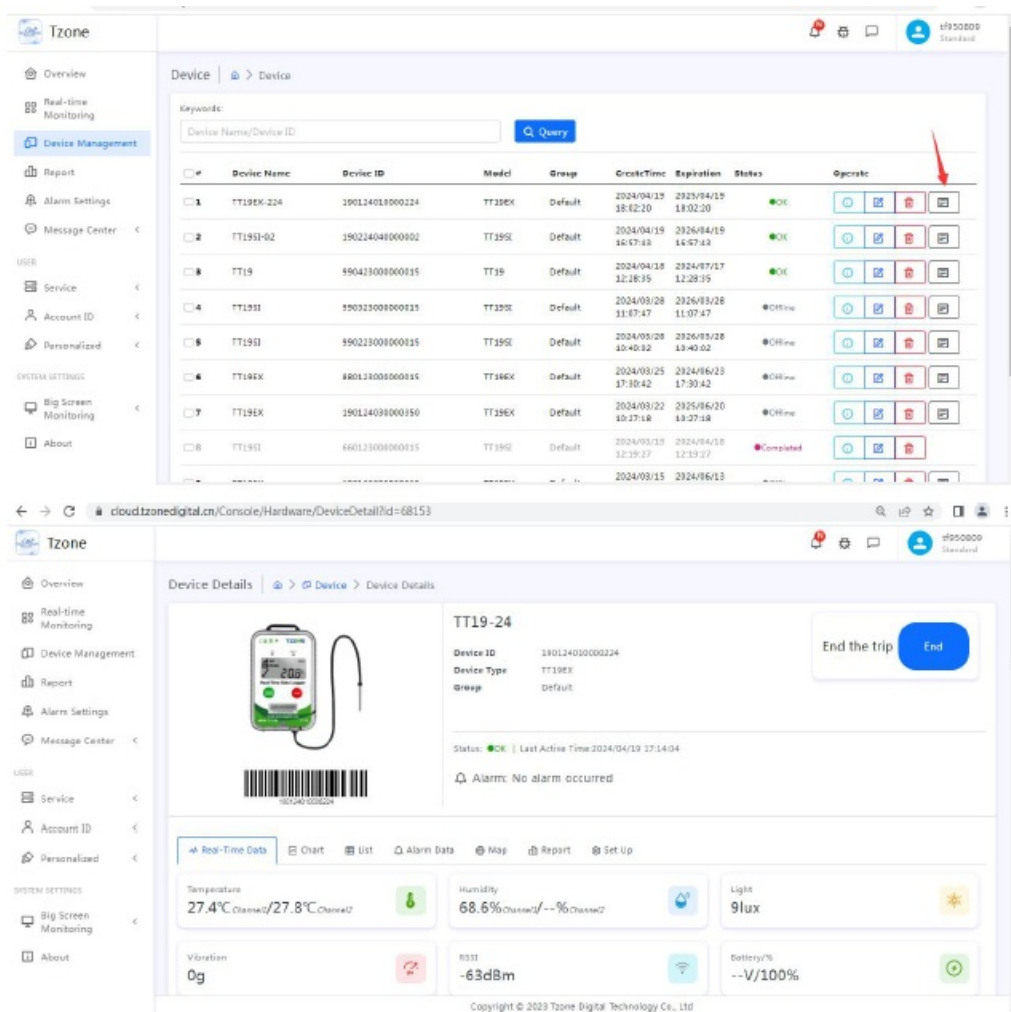


## Step12: Query data.

1. Query method 1



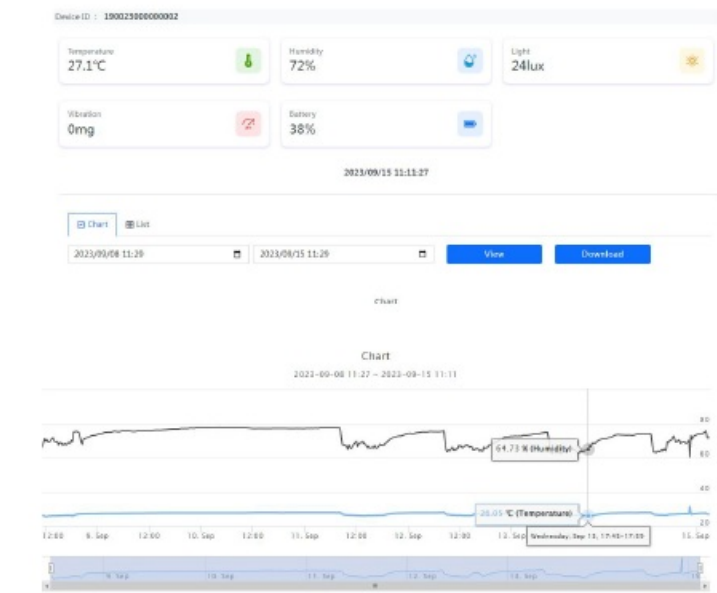
## 2. Query method 2



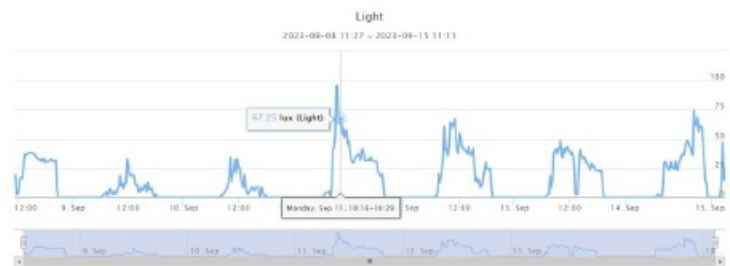
## 3. Query method 3

Enter the URL: <http://cloud.tzonedigital.com/>

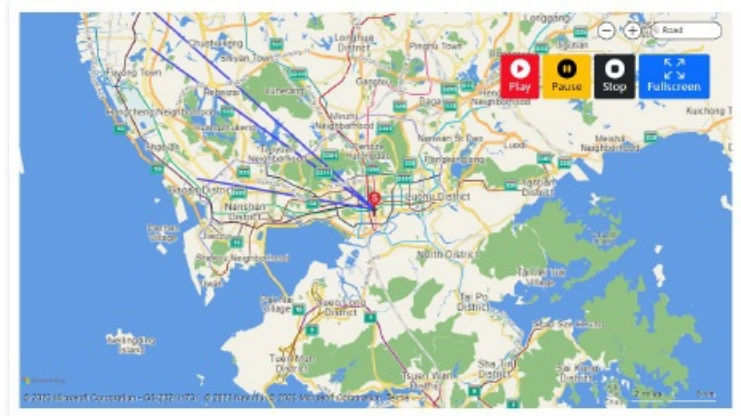








Tips: The query returns a maximum of 10000 data. If it exceeds, please change the time range.



## Shipment

|               |   |                  |           |
|---------------|---|------------------|-----------|
| Shipment ID   | DW2827257816307                         | Customer company | skywalker |
| Asset ID      |   | Goods            |           |
| Carrier       |   | Transport Route  | ~         |
| Sender        |   | Receiver         |           |
| Vehicle       |   |                  |           |
| EstimatedTime | 2024/04/18 10:32:00~2024/06/17 10:32:00 |                  |           |
| Remark        |   |                  |           |

## Device Settings

|                          |    |                          |          |
|--------------------------|----|--------------------------|----------|
| Reporting Interval (min) | 5  | Recording Interval (min) | 5        |
| Start Delay Time (min)   | 0  | Open GPS                 | Disabled |
| Forbid manual stop       | No | Set Airplane Mode        | Disabled |
| Temperature Unit         | °F | Time zone                | +08:00   |

Alarm Settings

|   |  |   |       |
|---|--|---|-------|
| Channel1 - Temperature alarm threshold (°C)     | -40~100  | Channel1 - Humidity alarm threshold (%)     | 0~100 |
| Channel1 - Temperature Pre-Alert threshold (°C) | -30~90   | Channel1 - Humidity Pre-Alert threshold (%) | 10~90 |
| Channel2 - Temperature alarm threshold (°C)     | -10~100  |   |       |
| Channel2 - Temperature Pre-Alert threshold (°C) | -10~90   |   |       |
| Light alarm threshold (lux)                     | 0~200  |   |       |
| Vibration alarm threshold (g)                   | 2  |   |       |
| Effective date                                  | 2024/03/12 16:03:13~2025/03/12 16:03:13                        |   |       |
| Repeat  | Sunday, Monday, Tuesday, Wednesday, Thursday, Friday, Saturday |   |       |
| Effective time                                  | 00:00~23:59  |   |       |

Alarm Notifier

|                         |                   |
|-------------------------|-------------------|
| Mail alarm notification | Share information |
| SMS alarm notification  |                   |

Documents / Resources



**[TZONE TT19 4G and 5G Real Time Temperature Humidity Light](#)** [pdf] User Guide  
TT19, TT19 4G and 5G Real Time Temperature Humidity Light, 4G and 5G Real Time Temperature Humidity Light, Real Time Temperature Humidity Light, Temperature Humidity Light, Humidity Light, Light

References

- [User Manual](#)

[Manuals](#), [Privacy Policy](#)

This website is an independent publication and is neither affiliated with nor endorsed by any of the trademark owners. The "Bluetooth®" word mark and logos are registered trademarks owned by Bluetooth SIG, Inc. The "Wi-Fi®" word mark and logos are registered trademarks owned by the Wi-Fi Alliance. Any use of these marks on this website does not imply any affiliation with or endorsement.