



typecase KB201T-110 Touch iPad 11 Pro Case with Keyboard User Manual

[Home](#) » [typecase](#) » typecase KB201T-110 Touch iPad 11 Pro Case with Keyboard User Manual 

Contents

- 1 typecase KB201T-110 Touch iPad 11 Pro Case with Keyboard
- 2 TECHNICAL SUPPORT
- 3 SETUP
- 4 BATTERY AND CHARGING
- 5 TROUBLESHOOTING
- 6 PRODUCT SPECS
- 7 Documents / Resources
 - 7.1 References



typecase KB201T-110 Touch iPad 11 Pro Case with Keyboard



TECHNICAL SUPPORT

If you encounter any difficulties or have inquiries, please do not hesitate to reach out to us at your earliest convenience. For the quickest and most efficient support experience, please contact us directly through one of the

following channels, rather than through Amazon.

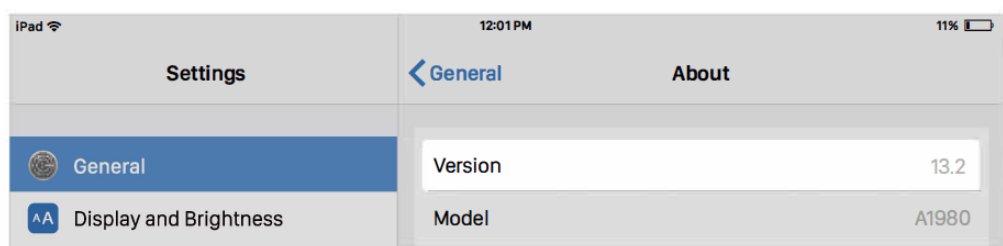
1. Email: support@typecase.co
2. Phone: 832 – 303 – 5080
3. Chat: <https://typecase.co/support>

COMPATIBILITY

Compatible with iPadOS 13 or newer. Update to the latest version of iPadOS for best performance.

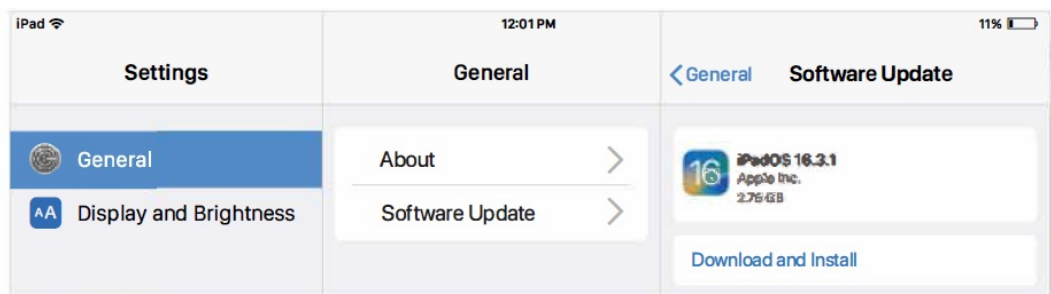
To check your iPad system version:

1. Go to Settings > General > About > Software Version.
2. Upgrade your version to iPadOS 16 or above to use the touch pad function correctly.



To upgrade your iPadOS to the latest version:

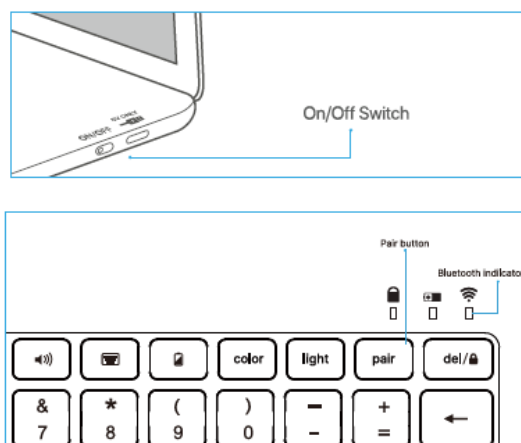
1. Open your device's Settings >General> Software Update.



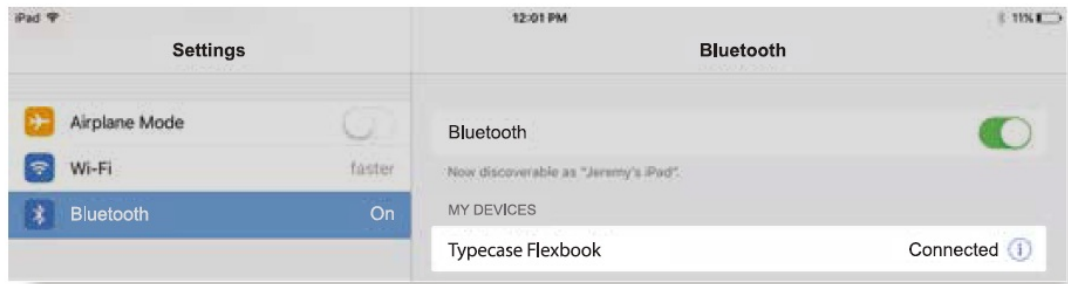
2. Tap Download and Install.
Tap "Resume Download" if available.

SETUP

To pair with your iPad:

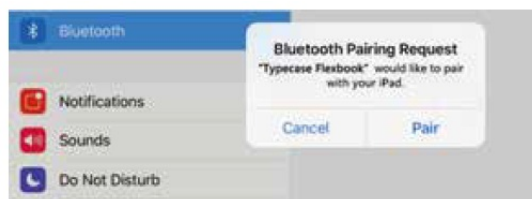


1. Turn ON/OFF switch to ON.
2. Bluetooth indicator blinks. Press and hold 'Pair' button for 2 seconds if it doesn't.
3. Toggle Bluetooth ON in Settings app.



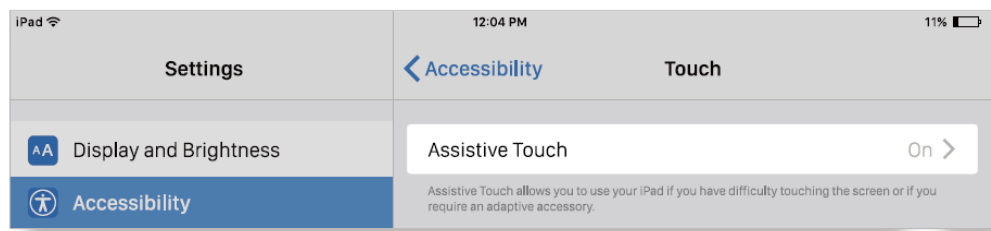
4. In the Bluetooth section of the Settings app, select 'Typecase Flexbook' under 'MY DEVICES'.
5. Tap 'Pair' in the pop-up window as shown.

Note: To pair with new devices, repeat steps 1-5. Pairing complete when "Connected" indicator appears.



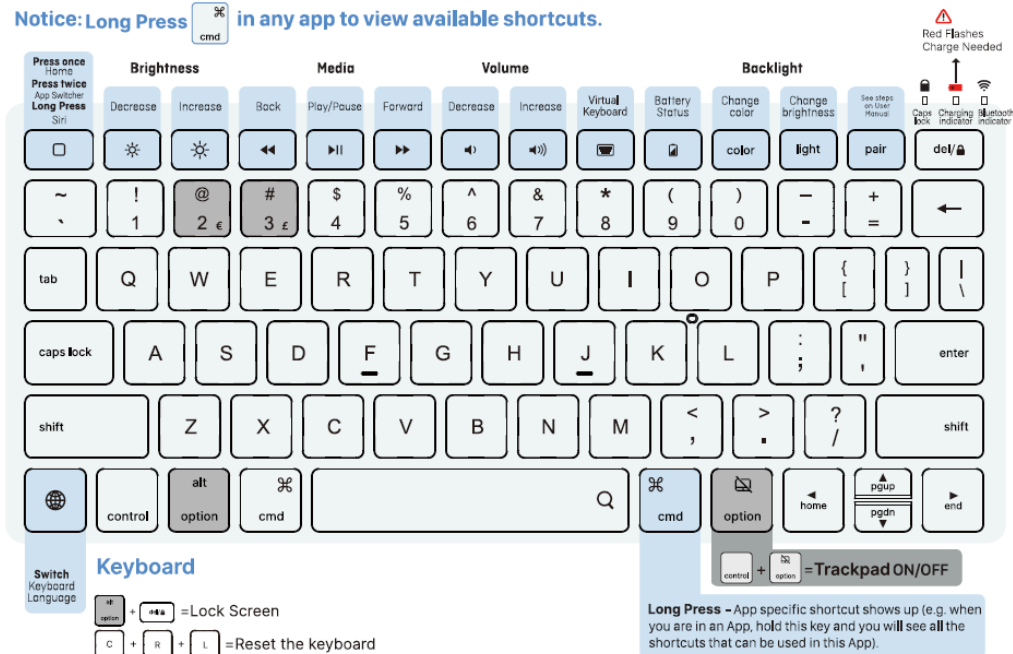
If your system is 13.3.1, please follow the steps to enable touchpad function:

1. Go to Settings > Accessibility > Touch.
2. Make sure the Assistive Touch option is turned On.



SHORTCUT MAP

Notice: Long Press  in any app to view available shortcuts.



Press once Home
Press twice
Long Press
Siri

Brightness
Decrease
Increase

Media
Back
Play/Pause
Forward

Volume
Decrease
Increase

Backlight
Virtual Keyboard
Battery Status
Change color
Change brightness
See steps on User Manual
Charging indicator
Bluetooth indicator

Keyboard
Switch Keyboard Language

Long Press - App specific shortcut shows up (e.g. when you are in an App, hold this key and you will see all the shortcuts that can be used in this App).

Trackpad ON/OFF
control + option

System
 ⌘ + H = Go to Home Screen
 ⌘ + H = Go to Home Screen
 ⌘ + Q = Quick Note
 ⌘ + A = Show Dock
 ⌘ + C = Control Center
 ⌘ + N = Notification Center
 ⌘ + M = Show Keyboard Shortcuts
 ⌘ + S = Siri
 ⌘ + [App Icon] + A = Show App Library
 ⌘ + [App Icon] + S = Screenshots
 ⌘ + [App Icon] + S & A = Screenshots and Markup
 ⌘ + [App Icon] + D = Show Dock
 ⌘ + [Search Icon] = Search
 ⌘ + Tab = Switch App

Format
 ⌘ + B = Bold
 ⌘ + I = Italic
 ⌘ + U = Underline

Multitasking
 ⌘ + [App Icon] = App Switcher
 ⌘ + [All Windows Icon] = Show All Windows
 ⌘ + [Previous App Icon] = Previous App
 ⌘ + [Next App Icon] = Next App

Split View
 ⌘ + [Split View Icon] = Tile Window Left
 ⌘ + [Split View Icon] = Tile Window Right
 ⌘ + F = Enter Fullscreen

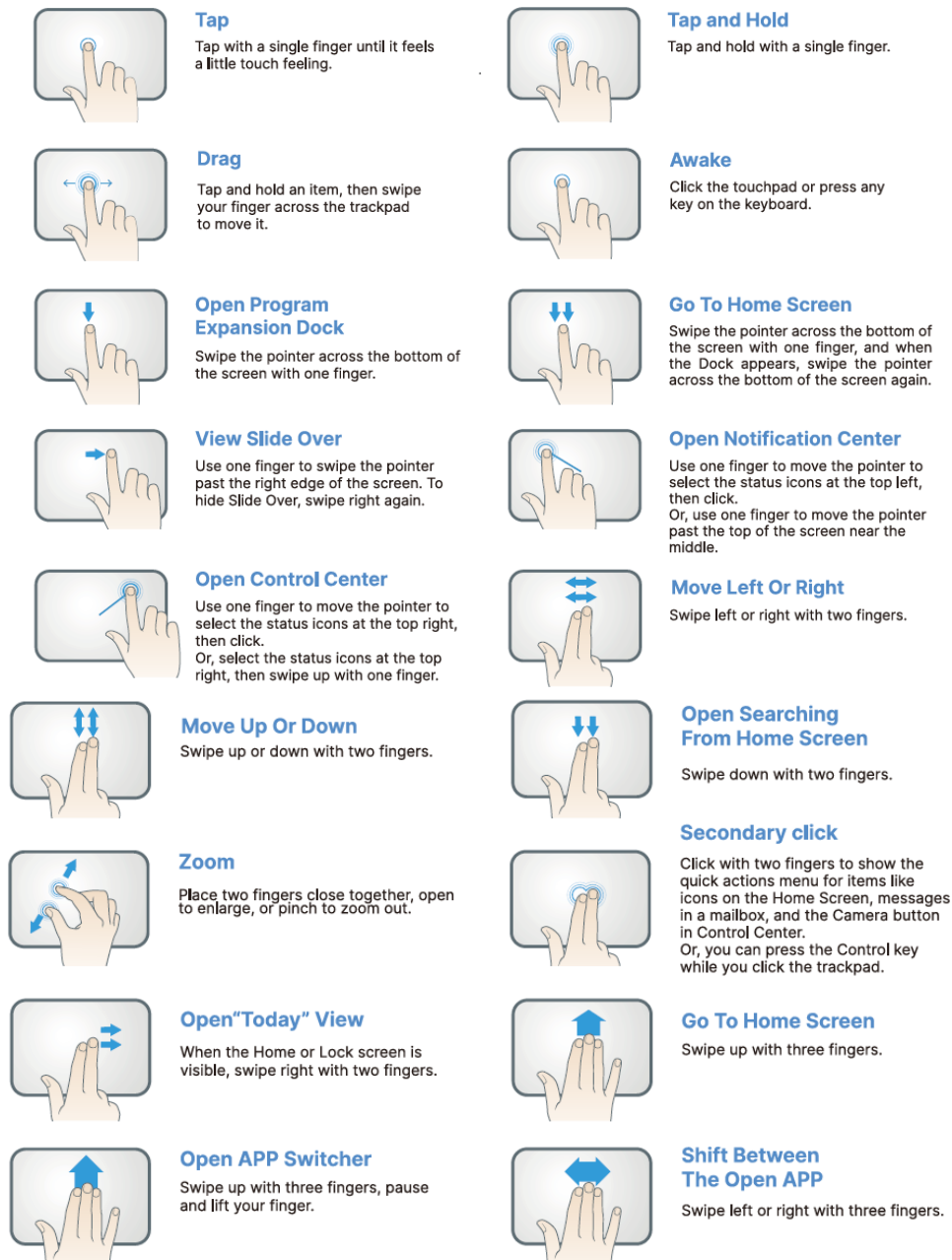
Slide Over
 ⌘ + [Slide Over Icon] = Move to Left Slide Over
 ⌘ + [Slide Over Icon] = Move to Right Slide Over
 ⌘ + [Slide Over Icon] = Show Slide Over
 ⌘ + [Next Slide Over Window Icon] = Next Slide Over Window

Edit
 ⌘ + [Previous Word Icon] = Jump to last word
 ⌘ + [Next Word Icon] = Jump to next word
 ⌘ + [Top of Page Icon] = Jump to top of the page
 ⌘ + [Bottom of Page Icon] = Jump to bottom of the page
 ⌘ + [Begin of Line Icon] = Jump to begin of the line
 ⌘ + [End of Line Icon] = Jump to end of the line
 ⌘ + [Search Icon] = Switch language and typewritingspace
 ⌘ + A = Select All
 ⌘ + X = Cut
 ⌘ + C = Copy
 ⌘ + V = Paste
 ⌘ + Z = Undo Typing
 ⌘ + F = Find
 ⌘ + D = Dictation
 ⌘ + E = Emoji

Symbol
 ⌘ + R = ®
 ⌘ + > = ≥
 ⌘ + J = Δ
 ⌘ + Z = Ω
 ⌘ + S = β
 ⌘ + G = ©
 ⌘ + < = ≤
 ⌘ + P = Π
 ⌘ + X = ∞
 ⌘ + W = Σ
 ⌘ + + = ≠
 ⌘ + ? = ÷
 ⌘ + V = √
 ⌘ + M = μ
 ⌘ + % = ∞

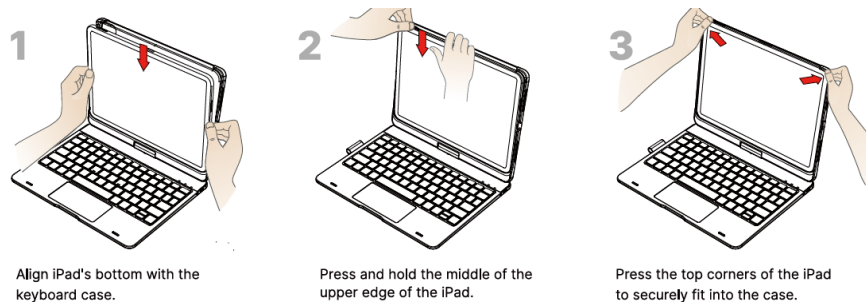
TOUCHPAD FUNCTION

Notice: Make sure bluetooth connected and touchpad function turned on!

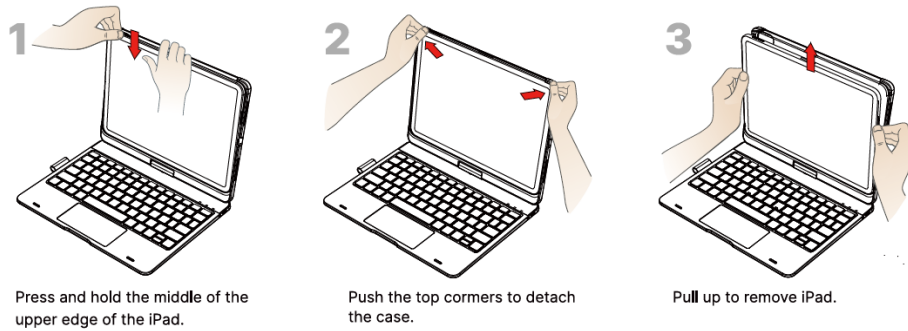


INSTALLATION AND REMOVAL

Installation:



Removal:



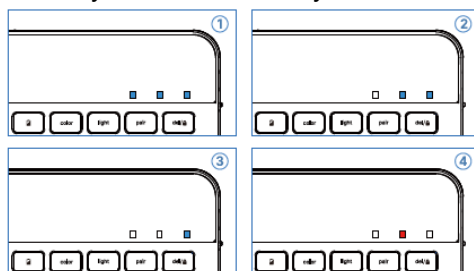
ROTATION AND USAGE



BATTERY AND CHARGING

To Check The Battery Status Of The Keyboard

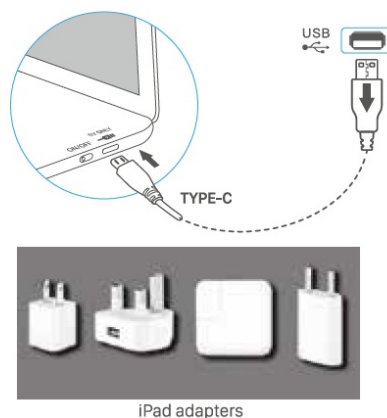
Press 0 on the keyboard. The battery level will be indicated by the number of lit indicators.



- ① battery level is between 100% and 70%
- ② battery level is between 70% and 40%
- ③ battery level is between 40% and 10%
- ④ battery level is less than 10%

Note: If the keyboard has been connected to an iPad, you can also check the battery status through the iPad's battery widget.

TO CHARGE THE KEYBOARD



1. Turn on the keyboard (if battery indicator is flashing, please charge the keyboard).
2. Plug the charging cable (included) into the keyboard and power adapter (not included, iPad or iPhone power

adapter recommended);

1. Battery indicator turns red when keyboard is charging;
2. Battery indicator turns blue when charging is complete.

TROUBLESHOOTING

If your keyboard is not functioning properly, please follow these steps to resolve the issue:

1. Ensure Bluetooth is enabled on your iPad or other Bluetooth device.
2. Verify that the keyboard is within 33 feet range.
3. Confirm that the keyboard is charged.
4. Turn on the keyboard, press the battery button to check the battery level by indicator.
5. Press the 'Pair' key and check the Bluetooth connection status.
6. Ensure the keyboard has successfully paired via Bluetooth.

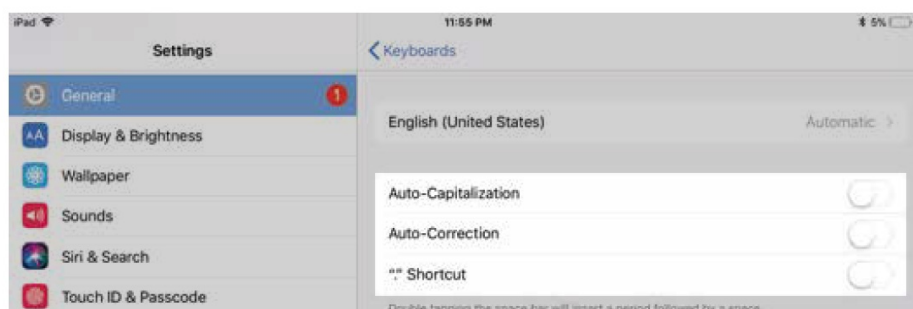
If you are encountering unwanted cursor move when typing, or some keys like 7,8,9,U,O,J,K,L cannot be entered, please Turn OFF AssistiveTouch> Mouse Keys as follows:

1. On your iPad, go to Settings > Accessibility and select Touch.
2. Select AssistiveTouch, then select Mouse Keys.
3. Turn Off Mouse Keys



If you are encountering unwanted auto-correction or punctuation, follow these steps:

1. Open the Settings app > General > Keyboard > Hardware Keyboard.
2. Turn OFF the options for Auto-Capitalization, Auto-Correction, and “.” shortcut (refer to the accompanying picture for reference).



If you experience difficulty pairing your keyboard via Bluetooth, please follow these steps:

1. Delete any previously paired Bluetooth devices on your iPad.
2. Turn off Bluetooth on your iPad.

3. Restart your iPad.
4. Turn on Bluetooth on your iPad.
5. Turn off and on the keyboard.
6. Repeat the pairing steps as described on page 2 and 3 of the manual.

If you're still having problems troubleshooting your keyboard, try doing a hard reset:

Hold down C+R+L on the keyboard, until the keyboard indicators begin to flash. The keyboard will be reset.

PRODUCT SPECS

- Operating distance: 10 meters (33 feet) Modulation System: GFSK
- Working voltage: 3-0-4-2V
- Working current:0.88-200mA Sleeping current:< 125μA
- Charging current: <800mA Continuous working time without backlight: 60 hours

IC CAUTION

This device complies with Industry Canada licence-exempt RSS standard(s). Operation is subject to the following two conditions: (1) This device may not cause interference _ ence,and (2) This device must accept any interference, including interference that may cause undesired operation of the device.

FCC CAUTION

This device complies with part 15 of the FCC Rules. Operation is subject to the following two conditions: (1) This device may not cause harmful interference, and (2) this device must accept any interference received, including interference that may cause undesired operation. Any Changes or modifications not expressly approved by the party responsible for compliance could void the user's authority to operate the equipment.

Note: This equipment has been tested and found to comply with the limits for a Class B digital device, pursuant to part 15 of the FCC Rules. These limits are designed to provide reasonable protection against harmful interference in a residential installation. This equipment generates uses and can radiate radio frequency energy and, if not installed and used in accordance with the instructions, may cause harmful interference to radio communications. However, there is no guarantee that interference will not occur in a particular installation. If this equipment does cause harmful interference to radio or television reception, which can be determined by turning the equipment off and on, the user is encouraged to try to correct the interference by one or more of the following measures:

- Reorient or relocate the receiving antenna.
- Increase the separation between the equipment and receiver.
- Connect the equipment into an outlet on a circuit different from that to which the receiver is connected.
- Consult the dealer or an experienced radio/TV technician for help.

RF warning for Portable device:

The device has been evaluated to meet general RF exposure requirement. The device can be used in portable exposure condition without restriction.

 <p>typecase TOUCH USER MANUAL</p> <p>For warranty registration and product support:</p> <p>1-800-888-8888 www.typecase.com</p>	<p>typecase KB201T-110 Touch iPad 11 Pro Case with Keyboard [pdf] User Manual</p> <p>KB201T-110 Touch iPad 11 Pro Case with Keyboard, KB201T-110, Touch iPad 11 Pro Case with Keyboard, iPad 11 Pro Case with Keyboard, 11 Pro Case with Keyboard, Pro Case with Keyboard, Case with Keyboard, Keyboard</p>
--	---

References

- [User Manual](#)