



Typecase iPad 11 Pro Case with Keyboard User Manual

[Home](#) » [typecase](#) » Typecase iPad 11 Pro Case with Keyboard User Manual 

typecase®

**FLEXBOOK
User Manual**



For warranty registration and product support:

Contents

- 1 TECHNICAL SUPPORT**
- 2 COMPATIBILITY**
- 3 SETUP**
- 4 SHORTCUT MAP**
- 5 INSTALLATION AND REMOVAL**
- 6 ROTATION**
- 7 USAGE**
- 8 CHARGING**
- 9 TROUBLESHOOTING**
- 10 PRODUCT SPECS**
- 11 IC CAUTION**
- 12 FCC CAUTION**
- 13 Documents / Resources**
- 14 Related Posts**


TECHNICAL SUPPORT

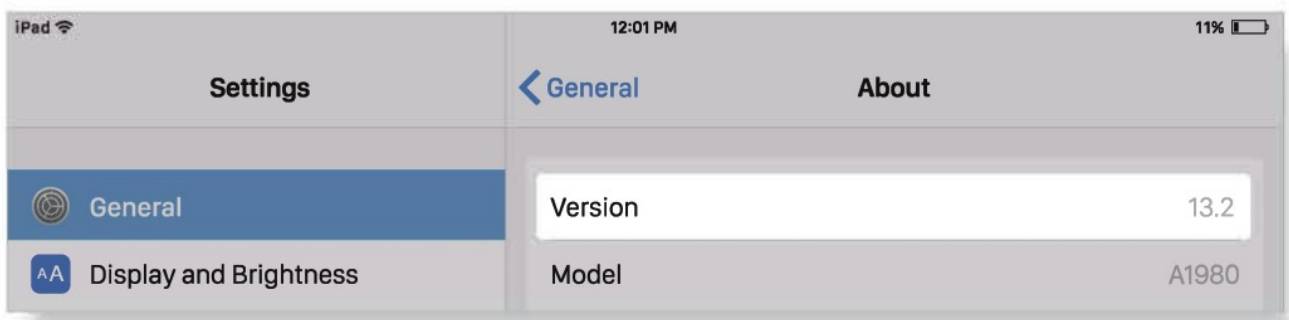
If you have any issues or questions, let us know ASAP! We would love to get you taken care of and happy right away! All units come with a full 12 month warranty, so you can relax and take comfort in your purchase. For the fastest & friendliest support, contact us (not Amazon) via one of the contact methods below.

1. Email: support@typecase.co
2. Phone: 832 – 303 – 5080
3. Chat: <https://typecase.co/support>

COMPATIBILITY

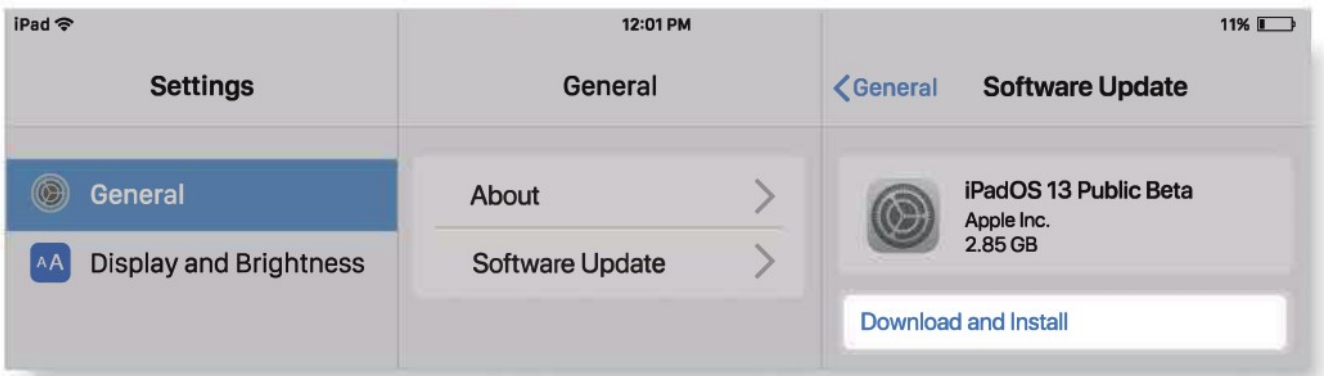
Compatible with iPadOS 13 (and newer). We recommend updating your iPadOS to 13.4.1 for best performance. To check your iPad system version:

1. Go to Settings  > General > About > Software Version.
2. Upgrade your version to iPadOS 13.4.1 or above to use the keyboard function correctly.



To upgrade your iPadOS to the latest version:

1. Open your device's Settings  > General > Software Update.




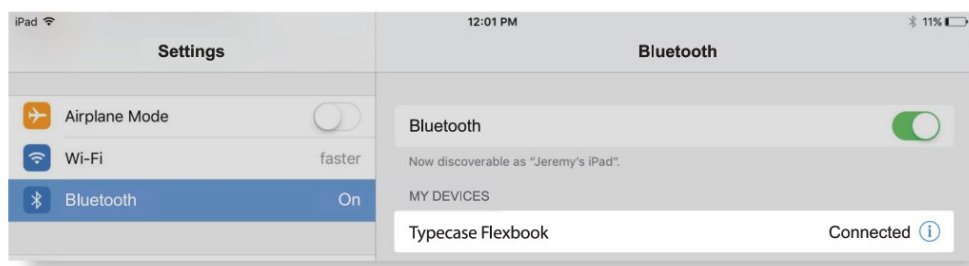
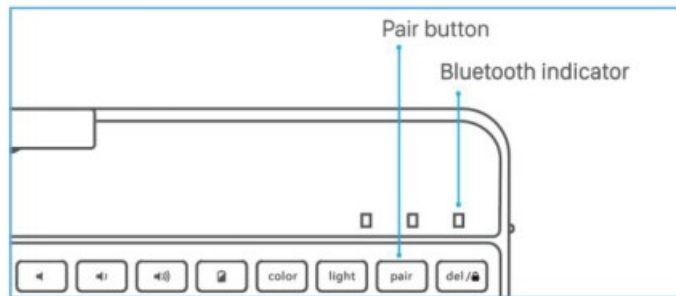
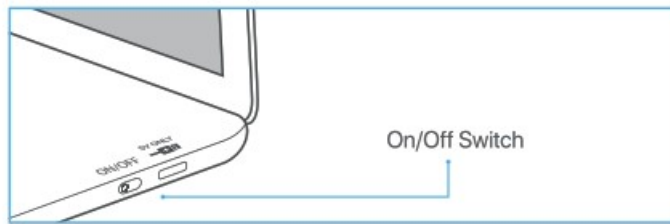
2. Tap Download and Install.
* If you see Resume Download, tap that instead.

SETUP

To pair with your iPad:

1. Switch ON/OFF switch to ON position.
2. Bluetooth indicator light will start blinking.
If Bluetooth indicator light does not start blinking, press and hold the 'Pair' button for 3 seconds.

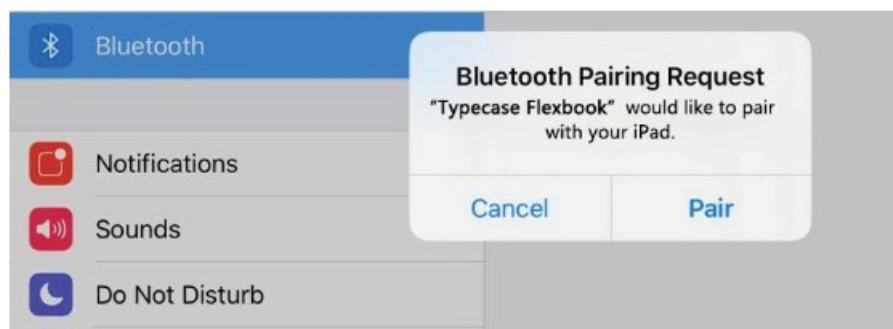
3. Toggle Bluetooth ON in the Settings app  (device is connected when Bluetooth indicator stops flashing).



4. Tap 'Typecase Flexbook' under 'MY DEVICES' in the Bluetooth section of the Settings app.
5. Tap 'Pair' in the pop-up window like shown below.

* When pairing to new devices, please repeat steps 1-3.

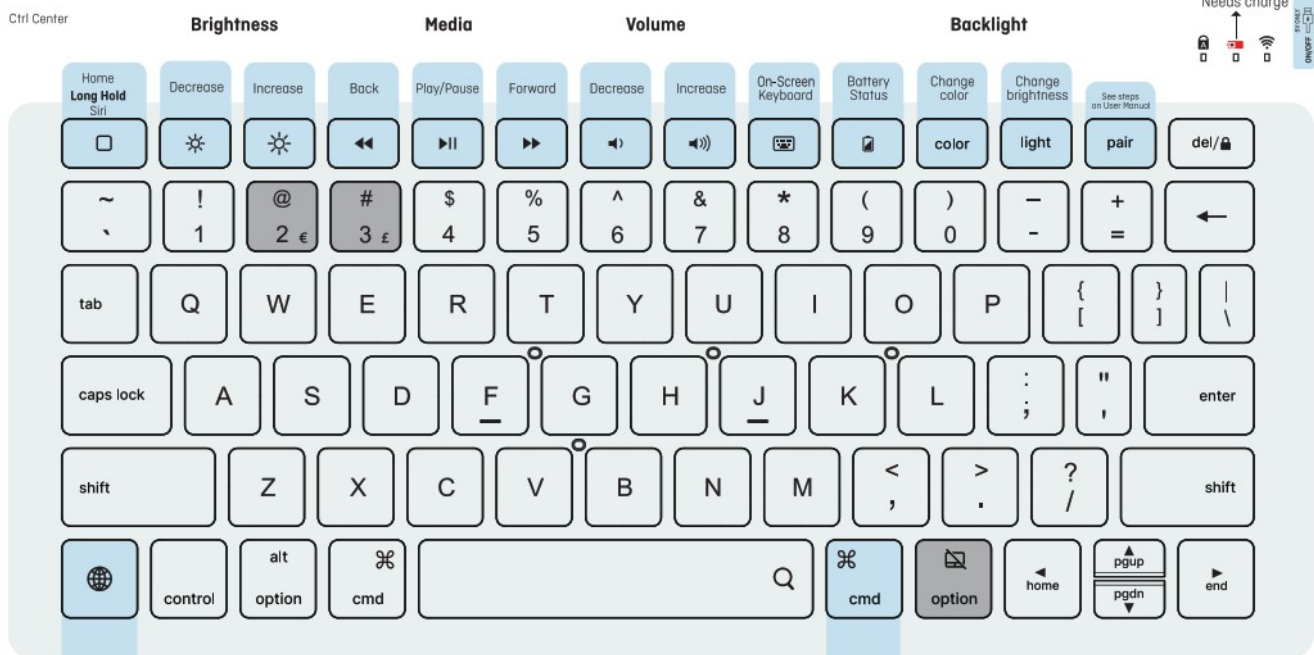
Pairing process is considered complete after 'Connected!' indicator appears.



SHORTCUT MAP

Notice: Long Hold  **in any app to view available shortcuts.**

Ctrl Center



Switch
Keyboard
Language

Shortcut Keys

CMD+ Tab =APP switch
CMD+A=Select all
CMD+C=Copy
CMD+V=Paste

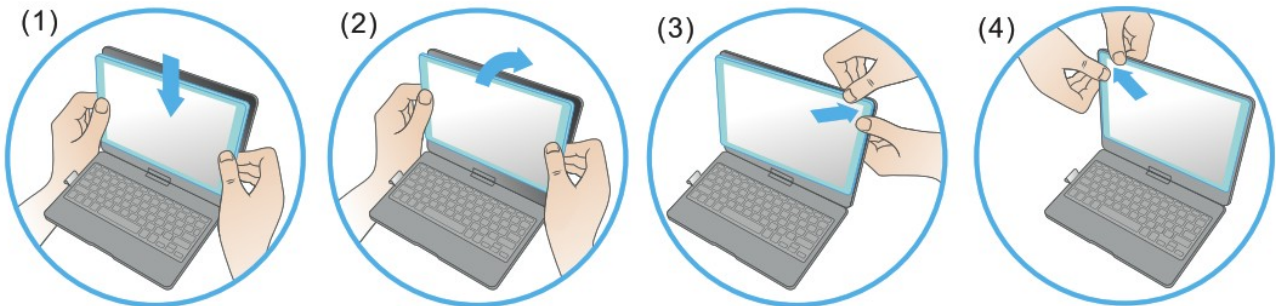
CMD+Z=Undo
CMD+X=Cut
CMD+Shift+3=Screen Shot
Color=Change backlight color

Light=Backlight brightness (low, medium, high, off)
Alt+Del=Screen Lock/Unlock
Option+Shift+2= €; Option+3= £

Long Hold - App specific shortcut shows up (e.g. when you are in an App, hold this key and you will see all the shortcuts that can be used in this App).

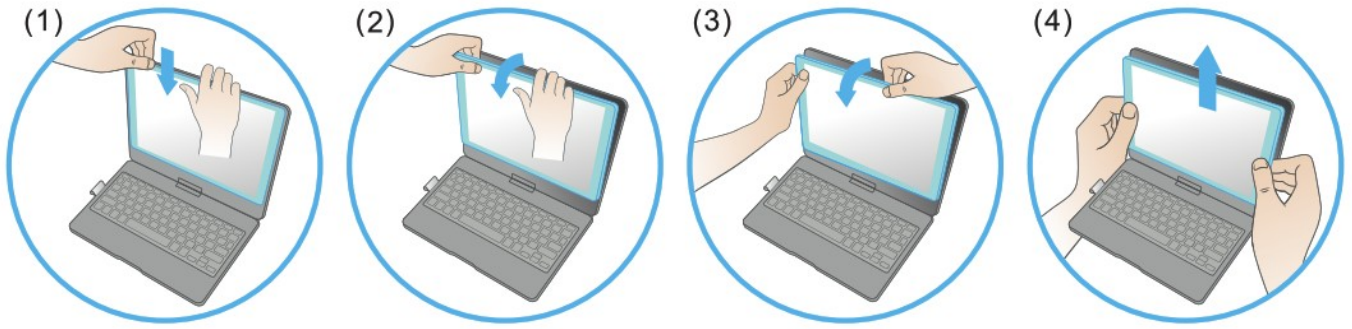
INSTALLATION AND REMOVAL

Installation:



1. Align the lower edge of the iPad with the keyboard case.
2. Slightly push the iPad until all of the edges align.
3. Press the upper corner of the iPad with your fingers to put it in place.
4. Repeat pressing the remaining corners until iPad is held tightly inside the case.

Removal:



1. Hold the case on the upper corner with your left hand and put your right hand on the upper edge of the iPad.
2. Press the edge of the iPad down using your fingers.
3. Take the upper part of the iPad out of the case.
4. Pull up to remove iPad from case.

ROTATION

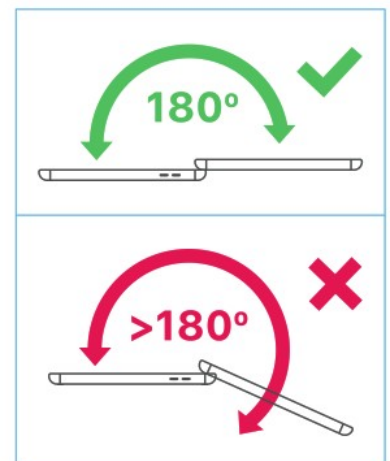


Twist to rotate 360°



Open up to 180°

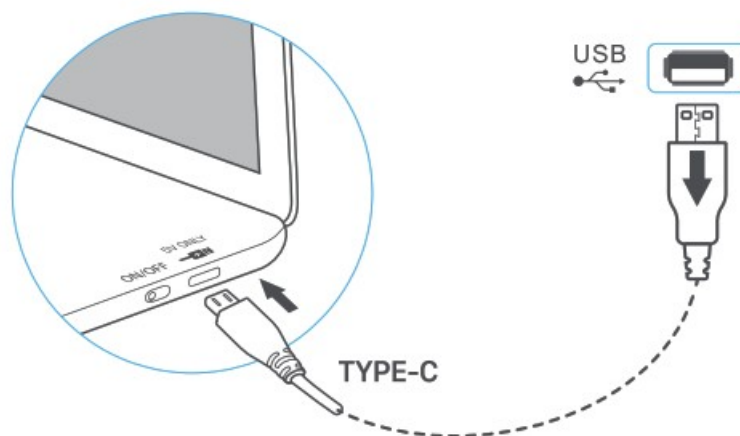
WARNING



USAGE



CHARGING



iPad adapters

1. Switch on the keyboard (if battery light is flashing, please charge the keyboard).
2. Plug the charging cable (included) into the keyboard and power adapter (not included, iPad or iPhone power adapter recommended);

- a) Battery indicator turns red when keyboard is charging;
- b) Battery indicator turns blue when charging is complete.

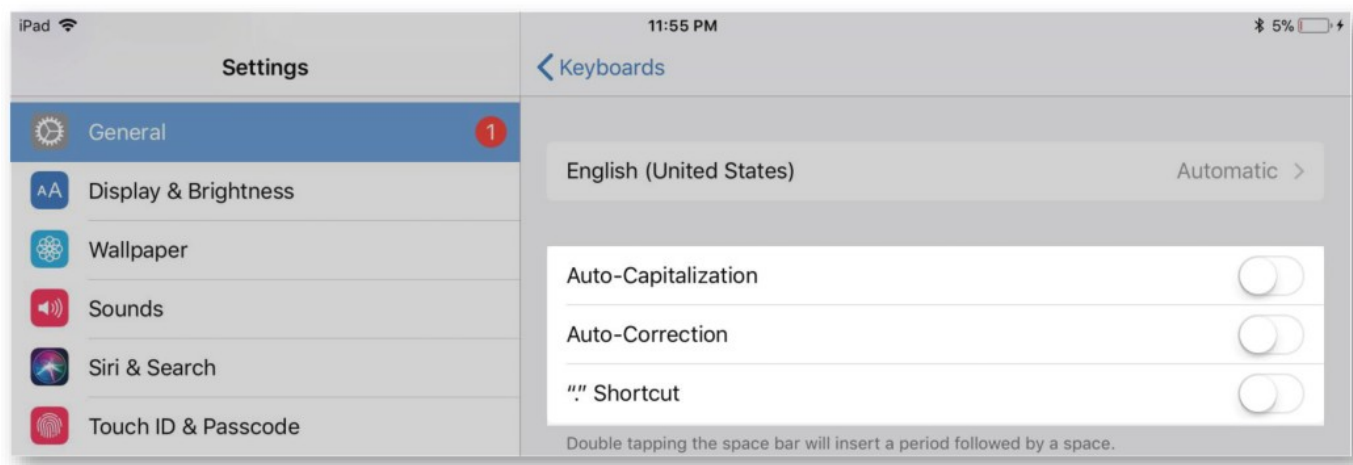
TROUBLESHOOTING

If the keyboard is not working correctly, please check the following:

1. The Bluetooth function on the iPad (or other Bluetooth devices) is enabled;
2. The Bluetooth keyboard is within 33 feet;
3. The Bluetooth keyboard is charged;
4. Make sure the keyboard is turned on (the battery indicator is illuminated);
5. Press the key 'Pair' and check the Bluetooth status;
6. Make sure a keyboard has already paired via Bluetooth.

If you have unwanted auto-correction or punctuation, please follow these steps:

1. Open Settings app > General > Keyboard > Hardware Keyboard;
2. Toggle OFF Auto-Capitalization, Auto-Correction, and "." shortcut (please refer to the picture below),



If Bluetooth pairing fails, please try the following steps:

1. Remove all Bluetooth devices on your iPad;
2. Switch off the Bluetooth function on your iPad;
3. Reboot the iPad;
4. Turn on the Bluetooth on your iPad;
5. Switch the keyboard off and on;
6. Repeat the steps described on page 2 and 3 to pair the keyboard.

PRODUCT SPECS

Operating distance: 10 meters (33 feet)
Modulation System: GFSK
Working voltage: 3.0-4.2V
Working current: 0.88-200mA

Sleeping current: <125kA
Charging current:<800mA
Continuous working time without backlight: 60 hours
Charging time: <2.5 hours
Charging voltage: 5V Key's life span: > 5 million strokes
Operating temperature: -10 ±55°C
Maintenance: Please preserve the keyboard under normal temperature and recharge under normal voltage.

IC CAUTION

This device complies with Industry Canada licence-exempt RSS standard(s).
Operation is subject to the following two conditions: (1) This device may not cause interference, and (2) This device must accept any interference, including interference that may cause undesired operation of the device.

FCC CAUTION

This device complies with part 15 of the FCC Rules. Operation is subject to the following two conditions: (1) This device may not cause harmful interference, and (2) this device must accept any interference received, including interference that may cause undesired operation.

Any Changes or modifications not expressly approved by the party responsible for compliance could void the user's authority to operate the equipment.

Note: This equipment has been tested and found to comply with the limits for a Class B digital device, pursuant to part 15 of the FCC Rules. These limits are designed to provide reasonable protection against harmful interference in a residential installation. This equipment generates uses and can radiate radio frequency energy and, if not installed and used in accordance with the instructions, may cause harmful interference to radio communications. However, there is no guarantee that interference will not occur in a particular installation. If this equipment does cause harmful interference to radio or television reception, which can be determined by turning the equipment off and on, the user is encouraged to try to correct the interference by one or more of the following measures:

- Reorient or relocate the receiving antenna.
- Increase the separation between the equipment and receiver.
- Connect the equipment into an outlet on a circuit different from that to which the receiver is connected.
- Consult the dealer or an experienced radio/TV technician for help.

***RF warning for Portable device:**

The device has been evaluated to meet general RF exposure requirement. The device can be used in portable exposure condition without restriction.



typecase.co/resources




+1(832) 303-5080



support@typecase.co

Documents / Resources

 <p>The manual is registration and product support.</p>	<p>Typecase iPad 11 Pro Case with Keyboard [pdf] User Manual B0B3MRPW8C, B09VH1L23Z, iPad 11 Pro Case with Keyboard, Case with Keyboard, Keyboard, B0B12CPLYH, B0B35YCVJF, B09VH2QVVQ, B09VGZY765</p>
---	--