



TYPE S T401 Dual View 4K Dashcam With AI Powered Driver Assistance Instruction Manual

[Home](#) » [TYPE S](#) » TYPE S T401 Dual View 4K Dashcam With AI Powered Driver Assistance Instruction Manual 

TOURING ITEMS
TYPE S®

T401

Dual View 4K Dashcam With AI Powered Driver Assistance

WP ITM. BT534217

Care & Use Instructions



**Important, retain for future reference:
Read carefully**

Contents

1	INTRODUCTION
2	PACKAGE CONTENTS
3	PRODUCT SPECIFICATIONS
4	DIMENSIONS
5	PRODUCT OVERVIEW
6	CONTROLLING THE CAMERA
7	INSTALLING THE CAMERA
8	CONFIGURING THE MENU SETTINGS
9	CAMERA STATUS & LED INDICATORS
10	RECORDING TIME
11	TIME-LAPSE RECORDING LOGIC
12	TECHNICAL SPECIFICATIONS
13	DOWNLOADING THE APP
14	SETTING UP THE APP
15	USING THE APP
16	VIEWING AND MANAGING MEDIA FILES USING A COMPUTER
17	FAQ S
18	SAFETY INFORMATION
19	MAINTENANCE & WARRANTY
20	GENERAL INFORMATION
21	Documents / Resources
21.1	References

INTRODUCTION

Please carefully review all installation instructions before installing the product. Improper installation may void the manufacturer's warranty. These instructions are not applicable to all vehicle types and are provided as guidelines to aid in product installation.

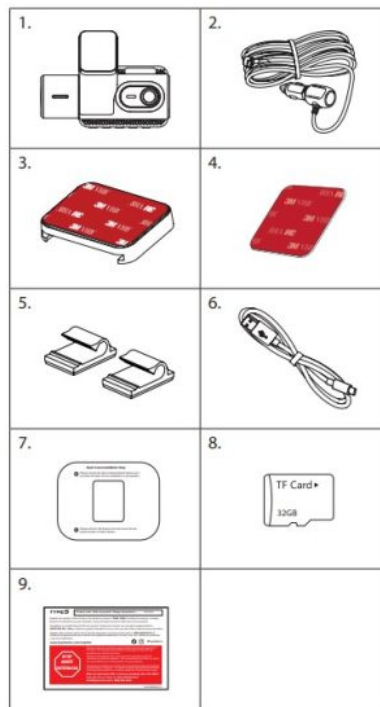
If you require assistance with camera installation, please feel free to either consult an experienced technician or reach out to TYPE S customer support at 1.866.294.9244.

BEFORE using the camera, please read the safety information in this manual, and always follow the guidelines outlined in it while using the product.

Please make sure you've read and understood local laws and regulations regarding cameras in vehicles, as these laws can vary by state.

PACKAGE CONTENTS

1. 1 x TYPE S T401 Dual View Dashcam
2. 1 x 12/24V Power Adapter
3. 1 x Mounting Bracket with 3M VHB™ Double-Sided Tape
4. 1 x Spare 3M VHB™ Double-Sided Tape
5. 2 x Cable Clips
6. 1 x USB-A to USB-C Data Transfer Cable
7. 1 x Adhesive Film
8. 1 x 32GB MicroSD Card (Factory-installed, replaceable)
9. 1 x Warranty Card

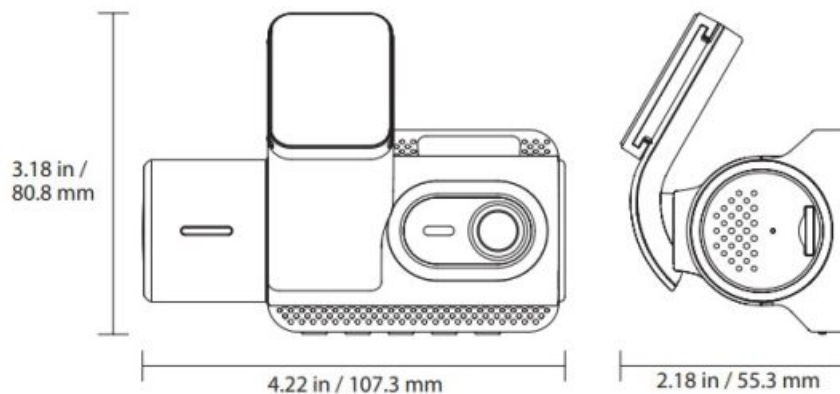


PRODUCT SPECIFICATIONS

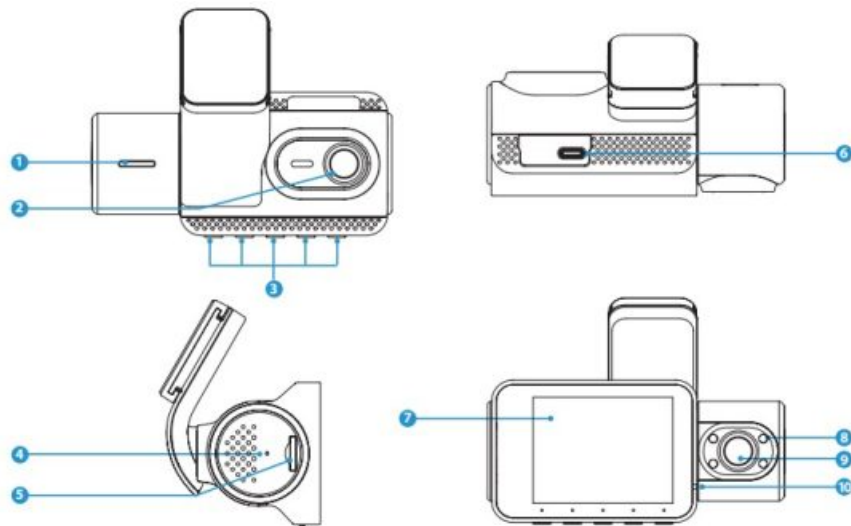
T401 Dual View Dashcam

Display:	2.4"
Video Resolution:	Front Camera – UHD 4K (3840 x 2160) Interior Camera – FHD 1080P (1920 x 1080)
Frequency:	2.4GHz
Operating Voltage:	DC 12/24V / DC 5V (USB-C)
Operating Temperature:	14°F~140°F (-10°C~60°C)
Lens (View Angle):	Front Camera – 120°; Interior Camera – 130°
Image Sensor:	Front Camera – 5MP; Interior Camera – 2MP
Maximum Signal Range:	Up to 10ft / 3m

DIMENSIONS



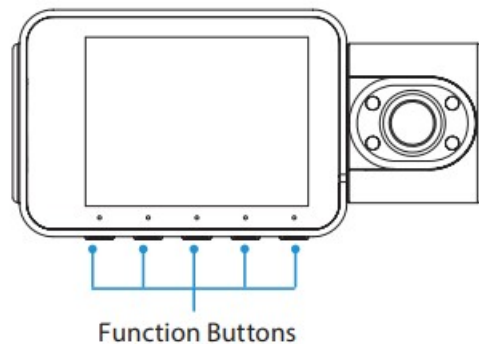
PRODUCT OVERVIEW

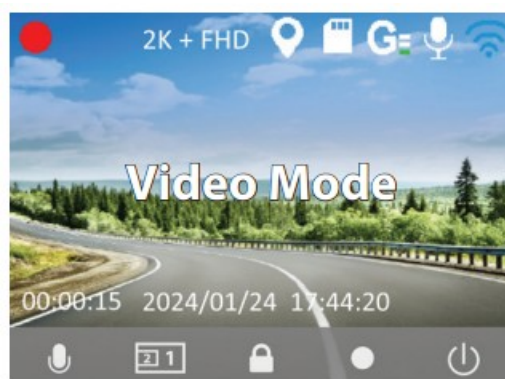



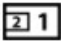



1. Speaker
2. Front Camera
3. Function Buttons
4. Reset Button
5. MicroSD Card Slot (MicroSD Card Factory-Installed)
6. Power Input
7. Display Screen
8. Infrared Sensors
9. Interior Camera
10. LED Indicators

CONTROLLING THE CAMERA


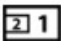



Apply configuration and settings to the camera using the 5 function buttons. Please refer to the section below for the functions of each button under different modes.





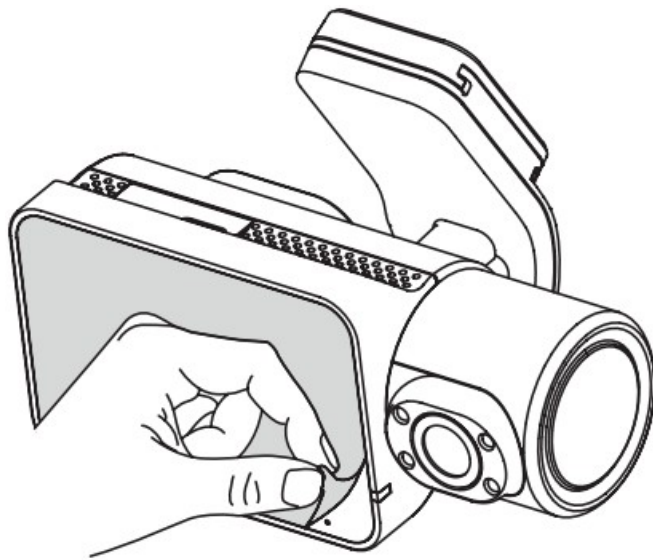
	Audio Recording On/Off (click once)
	Switch between Front/Interior/PIP view (click once)
	Lock/Unlock Video (click once)
	Record/Stop Recording (click once)
	Power On/Off (press & hold)



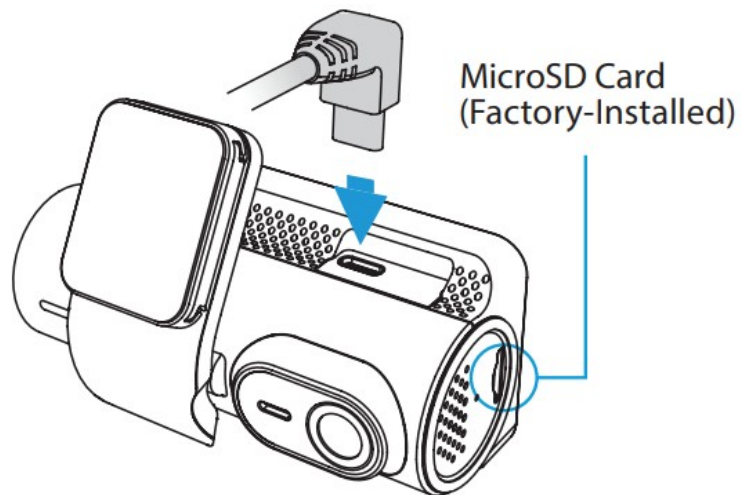
	Open Menu (click once)
	Switch between Front/Interior/PIP view (click once)
	Open Gallery (click once)
	Snapshot (click once)
	Power On/Off (press & hold)

INSTALLING THE CAMERA

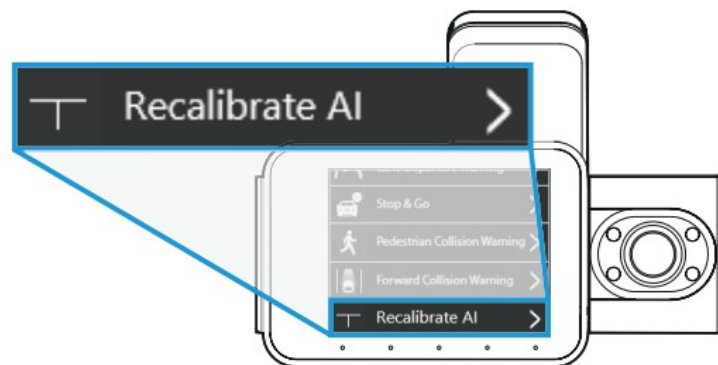
1. Remove the protective film from the display screen.



2. Power up the camera.

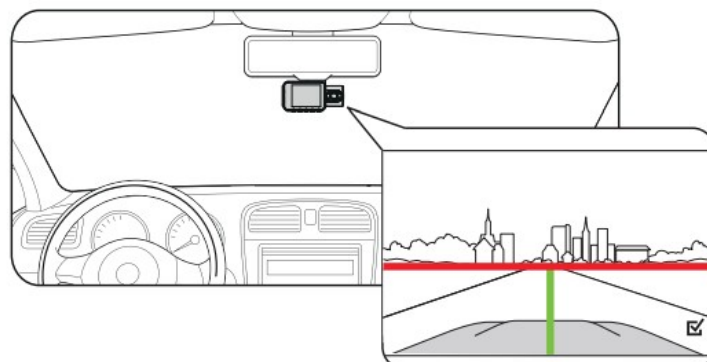


3. Calibration mode will engage upon initial use. To access it manually, please pause recording, go to Menu > Driver Assistance > Recalibrate AI.

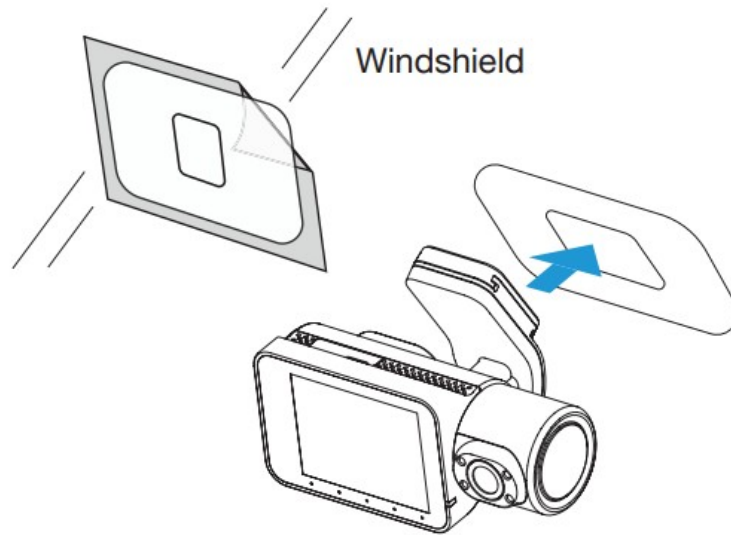


4. Hold the camera against your windshield.


Align the GREEN LINE with the center of your vehicle to find the optimal mounting position.

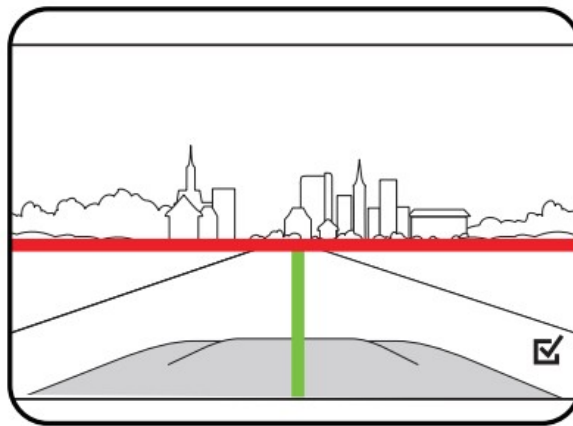


5. Apply the adhesive film to the selected location, then attach the camera to its center.

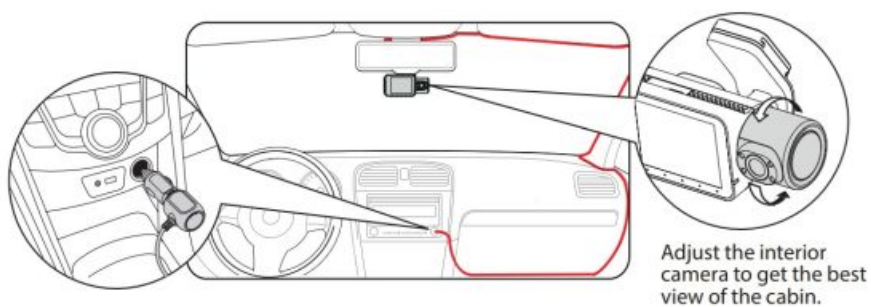


6. Adjust the camera lens angle, aligning the RED LINE with the horizon.

NOTE: Click  to exit calibration mode.



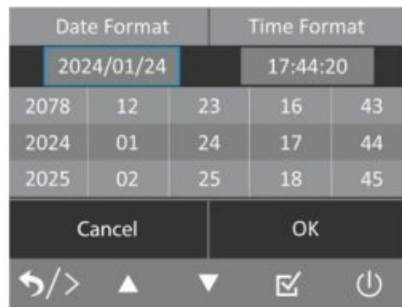
7. Route the power cable through the headliner and pillars inside your vehicle. To ensure it doesn't obstruct the driver's view, we recommend passing it through the passenger side. You may use the included cable clips to prevent the cable from dangling.



CONFIGURING THE MENU SETTINGS

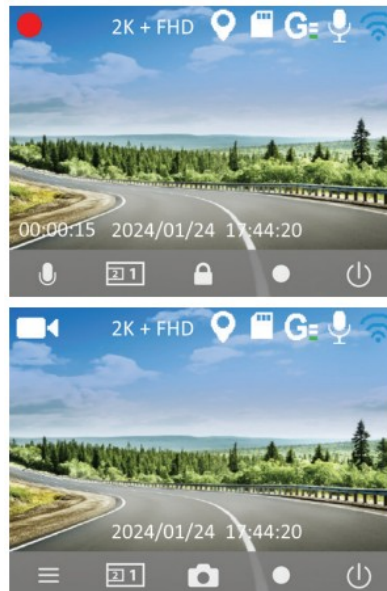
Initial Setup

Set the date & time before using the camera. The date stamps that appear on all future recordings will follow this setting. You may also sync the date & time to your phone by connecting the camera to the TYPE S Drive App.



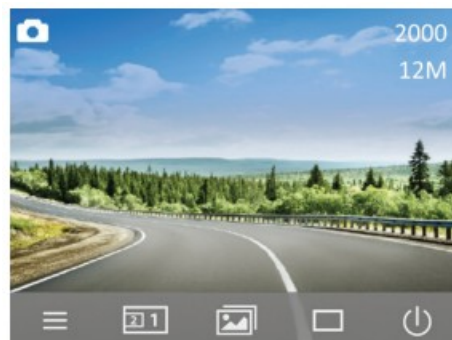
Video Mode

- This is the default recording setting. The camera will start recording automatically once it is powered on.
- By default, videos are recorded in 1-minute segments and saved onto the MicroSD card. When the memory reaches capacity, new videos will overwrite the old ones.
- Click to switch between front, interior and picture-in-picture view.
- Click to turn audio recording on/off.




- Click to start an emergency video recording. The footage will be stored in the Event folder.
- Recording must be stopped to switch between modes.
Click to stop recording.

Camera Mode

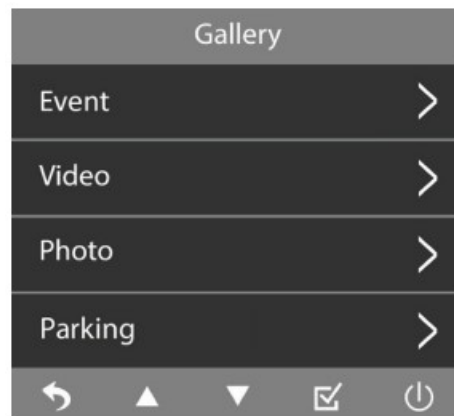


- Click to enter Camera Mode.
- Click to switch between front, interior and picture-in picture view.


- Click  to take a photo.

Gallery Mode

•





Click  to enter Gallery Mode.

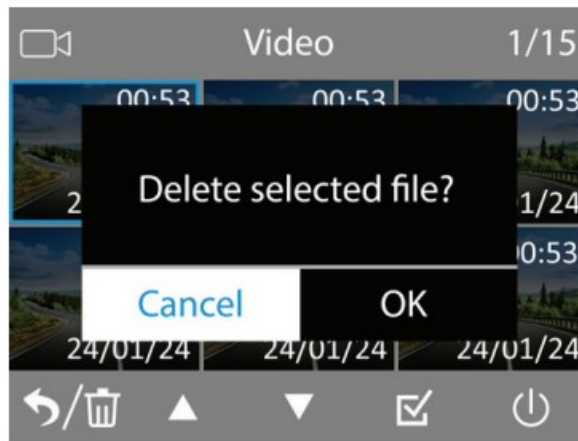
- Utilize ▼ or ▲ to cycle through Event, Video, Photo and Parking folders, then click  to select.
- In each folder, you can select between browsing front and interior camera footages or photos.

Play Back and Manage Files



- Utilize ▼ or ▲ to browse through the previews, then click  to open the file in full screen.
- Click ► to play back the current video file.
- During video playback, click  to pause and click again to resume the video.
- Click ►► to adjust video speed to x 2 or x 4.
- Click ↶ to return to the previews for next video.

Erase Files



- In previews, press and hold to delete the selected file.
- Click and to confirm the erase.
- Click to return to folder selection.

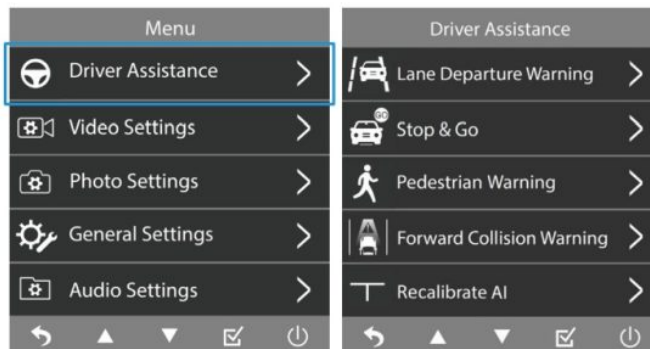
Advanced Driver Assistance System (ADAS)

The front camera features an AI-powered Advanced Driver Assistance System. For the system to function properly and accurately, please ensure the following conditions are met:

- The AI has been calibrated
- The MicroSD card has been installed
- Valid GPS signal (for accurate speed/distance calculations)
- Clean windshield

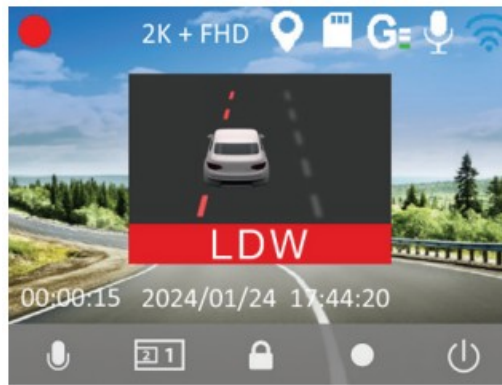
WARNING: Please ensure you complete the initial calibration and recalibrate each time you switch vehicles (refer to page 6). Failure to do so may result in inaccurate data, potentially affecting your safety and the performance of Advanced Driver Assistance features while driving.

- To adjust the Advanced Driver Assistance System settings, go to Menu > Driver Assistance.



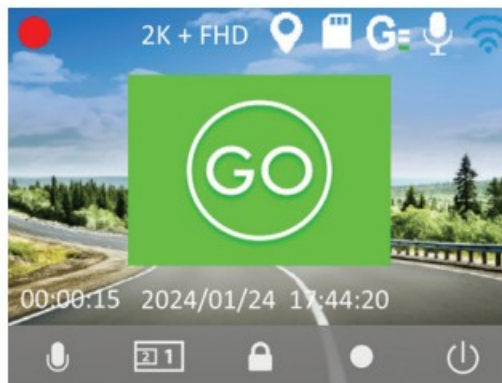
1. Lane Departure Warning

The Lane Departure Warning system alerts you when your vehicle deviates from the driving lane at a speed over 30 MPH (50 KM/H).



2. Stop & Go

Stop & Go system notifies you if traffic starts moving, but your vehicle hasn't. When your vehicle has stopped for over 5 seconds, and the vehicle ahead moves at least 7 feet (2 meters) forward, the camera will issue both visual and audio reminders.



3. Pedestrian Warning

The camera tracks nearby pedestrians, cyclists, and motorcyclists. If any of these road users are detected within 33 feet (10 meters) ahead while you're driving between 7 MPH and 25 MPH (10 KM/H and 40 KM/H), visual and audio alerts will be issued.



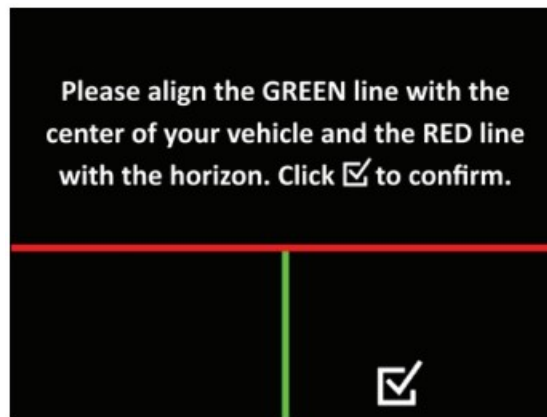
4. Forward Collision Warning

The camera calculates an estimated safe following distance between your vehicle and the vehicle ahead while driving above 30 MPH (50 KM/H). When the distance falls below 1 second, visual and audio alerts will be issued.

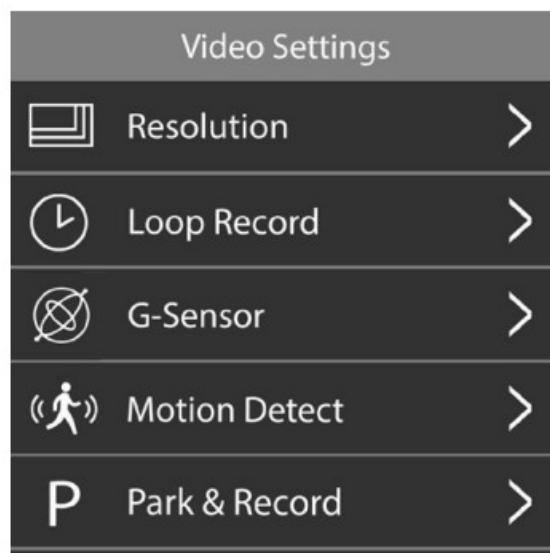


5. Recalibrate AI

To recalibrate the camera AI, enter calibration mode. The screen will automatically display calibration lines as guides (refer to page 6).



Video Settings



1. Resolution

Switch video resolution between 4K + FHD, 2K + FHD and FHD + FHD.

2. Loop Record

Select the duration of each recorded video file between 1 minute, 3 minutes and 5 minutes. The oldest unlocked files will be overwritten once the storage limit is reached.

3. G-Sensor

Adjust the G-Sensor sensitivity between High, Mid, Low and OFF.

When the G-Sensor detects a sudden impact, like a collision, it automatically locks and saves the footage in the

Event folder to prevent important data from being overwritten by the loop record feature.

4. **Motion Detect**

Motion Detect On/Off.

The Motion Detect function allows the camera to start recording automatically when a moving object is detected. Please only use this function when the vehicle is parked.

NOTE: Motion Detect does not support Time Lapse Mode.

5. **Park & Record**

Park & Record On/Off.

The Park & Record function allows the camera to record videos when an impact is detected while the vehicle's engine is off. The camera will power on automatically and record a 20-second video clip then shut down.

NOTE: Feature only available when the camera is hardwired to the fuse panel. Hardwiring kit (AC533513) sold separately.

6. **TimeLapse**



Select between normal and time lapse video.

Time lapse videos are recorded at a lower frame rate to create an accelerated time effect during playback (refer to page 17).

NOTE: Please set Motion Detect to OFF to activate the Time Lapse function.

7. **Exposure**

Adjust the exposure level between 2, 1, 0, -1 and -2 for different lighting conditions.

8. **Anti Flicker**

Adjust anti-flickering setting between 50Hz and 60Hz.

9. **Night Vision**

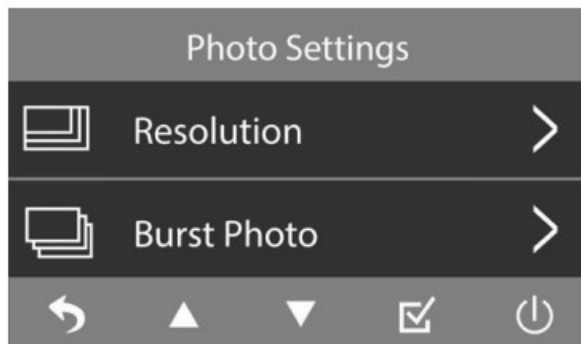
Set Night Vision to AUTO. The camera will automatically switch to black and white display under low-light conditions for improved visibility.

Set Night Vision to ON. The camera will display in black and white at all times to provide constant night vision functionality.

NOTE: Night Vision function supported by Interior Camera only.

Photo Settings

1.



Resolution

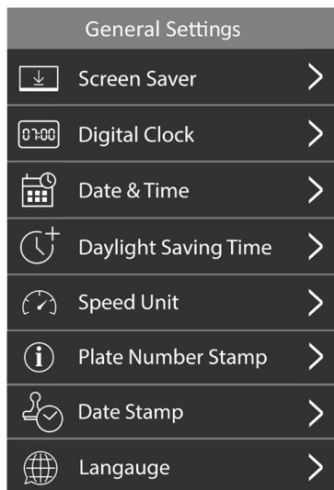
Select photo resolution between 12M (4608 x 2592), 8M (3840 x 2160) and 5M (3072 x 1728).

2. Burst Photo

Burst Photo On/Off.

Burst Photo Mode allows you to capture a series of photos in quick succession.

General Settings



1. Screen Saver

Select the period of inactivity to activate the screen saver. When the screen saver is running, a digital clock will be displayed, and the screen will remain active for any AI warnings.

2. Digital Clock

Enable/Disable the digital clock in the screen saver. If set to OFF, the screen saver will present a black screen instead.

3. Date & Time

Set the current date & time, and choose the format for how it's displayed on the camera and on all its recorded media files.

4. Daylight Saving Time

Daylight Saving Time On/Off.

The Daylight Saving Time feature allows you to adjust the clock forward or backward by 1 hour when daylight saving time changes occur.

NOTE: The camera will automatically sync its clock to the time on your phone every time you connect it to the TYPE S Drive App.

5. Speed Unit

Select the unit of speed between MPH and KM/H. Default speed unit is set as MPH.

6. Plate Number Stamp

Input your vehicle license plate number here. When activated, your plate number will be displayed on all recorded media files.

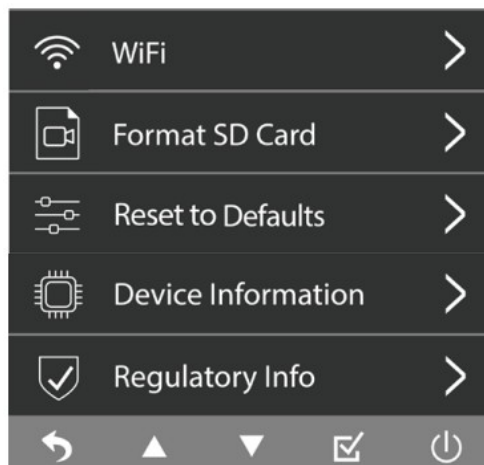
7. **Date & TYPE S Logo Stamp**

Enable/Disable the Date & TYPE S Logo Stamp. If set to ON, the date & TYPE S logo will be displayed on all recorded media files.

8. **Language**

Choose your desired language.

9. **WiFi**



The auto-sync feature via WiFi allows you to view/manage/ download files onto your smart device wirelessly via the TYPE S Drive App.

NOTE: Refer to page 19 for pairing procedure.

10. **Format SD Card**

Format the MicroSD card. This action will erase all data stored on the MicroSD card.

11. **Reset To Defaults**

Reset settings to factory defaults.

12. **Device Information**

Show the current firmware version of the camera.

13. **Regulatory Info**

Show regulation related information.

Audio Settings

1. **Keypad Tone**

Mute/Unmute keypad tone.

2. **Startup Sound**

Startup Sound On/Off.

3. **Record Audio**

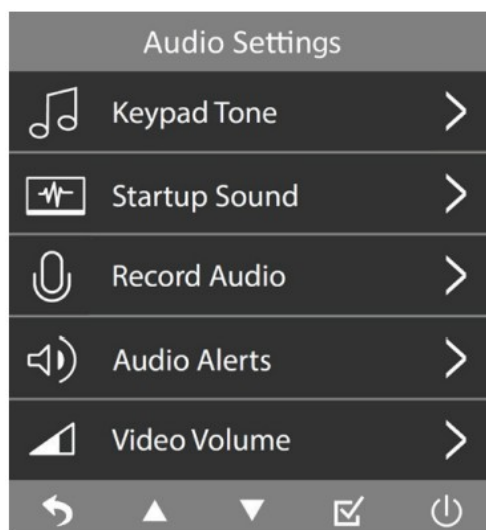
Record Audio On/Off. This feature enables the camera to capture sound during recording.

4. **Audio Alerts**

Audio Alerts On/Off. If set to ON, the system will sound an alert whenever an AI warning is triggered by active Driver Assistance features.

5. **Video Volume**

Adjust the volume of the recorded footage.



CAMERA STATUS & LED INDICATORS

Power / Mode Status	LED Indicators
Power On Camera powers ON when the engine is turned on.	Red LED light stays on when camera is powering on.
Recording	Red LED light flashes.
Recording Stopped	Red LED light stays on.

RECORDING TIME

Memory Card Capacity	Total Recording Time		
	(4K + FHD)	(2K + FHD)	(FHD + FHD)
32GB	≈ 106 minutes	≈ 142 minutes	≈ 170 minutes
64GB	≈ 213 minutes	≈ 285 minutes	≈ 342 minutes
128GB	≈ 431 minutes	≈ 575 minutes	≈ 690 minutes
256GB	≈ 797 minutes	≈ 1063 minutes	≈ 1276 minutes
512GB	≈ 1726 minutes	≈ 2301 minutes	≈ 2762 minutes

NOTE: If you use your own MicroSD card please insert it into the camera and format it before first use.

TIME-LAPSE RECORDING LOGIC

Mode	Behavior
Off	Without time-lapse record, captures 30 frames per 1 second.
1 Second	Time-lapse record, captures 1 frame per 1 second.
3 Seconds	Time-lapse record, captures 1 frame per 3 seconds.
5 Seconds	Time-lapse record, captures 1 frame per 5 seconds.

TECHNICAL SPECIFICATIONS

Memory Management

Mode	Resolution	1-Minute Video Size	Loop Period (32GB SD Card)
4K + FHD	3840 X 2160 + 1920 X 1080	240MB	≈ 106 minutes
2K + FHD	2560 X 1440 + 1920 X 1080	180MB	≈ 142 minutes
FHD + FHD	1920 X 1080 + 1920 X 1080	150MB	≈ 170 minutes

Memory Card Capacity	Usable Space	System Reserve	Event & Parking	Video & Photo
32GB	29.4GB	2.6GB	11.76GB	17.64GB
64GB	58.9GB	5.1GB	23.56GB	35.34GB
128GB	119GB	9GB	47.6GB	71.4GB
256GB	220GB	36GB	88GB	132GB
512GB	476GB	36GB	190.4GB	285.6GB

DOWNLOADING THE APP

The auto-sync feature in the TYPE S Drive App allows you to 1) Synchronize the camera's time with your phone's time, 2) Manage the camera's functions from your phone, and 3) View and download recorded videos. To access this feature, scan the QR code below or search for "TYPE S Drive" on the App Store or Google Play. Download and install the App.



SSID:
TYPE_S_DVR22_4K_xxxxxx
Password:
12345678



<https://itunes.apple.com/hk/app/type-s-backup-camera/id1363886509?mt=8>

Compatible with iPhone, iPad, Mac and iPod touch with iOS 13 or higher.



<https://play.google.com/store/apps/details?id=com.axiacomm.TypeS>

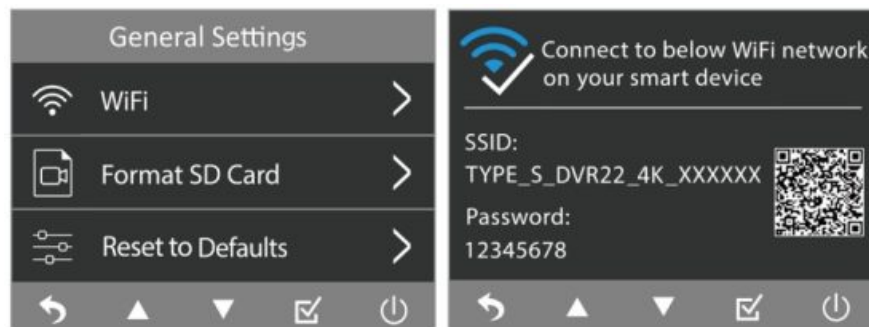
Compatible with devices with Android™ 7.0 or higher.

SETTING UP THE APP

Auto-sync with the Camera

1. Open the camera's menu and navigate to General Settings.
2. Go to WiFi. The designated QR code will appear.

NOTE: Make sure that WiFi is ON.



Android Device

3. Run the TYPE S Drive App. Click Allow in the pop-up message when prompted to allow the App to access your location.
4. Select the Dash Camera category.
5. Select AI SERIES DASHCAM from the list of devices. Click Set Up Device.

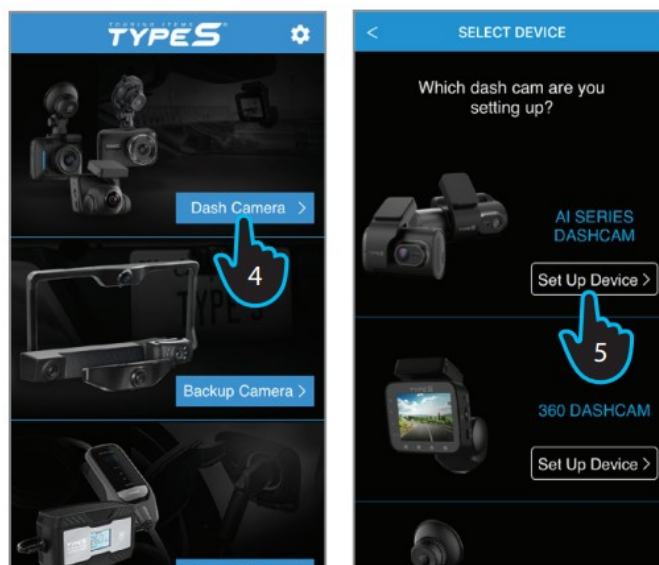


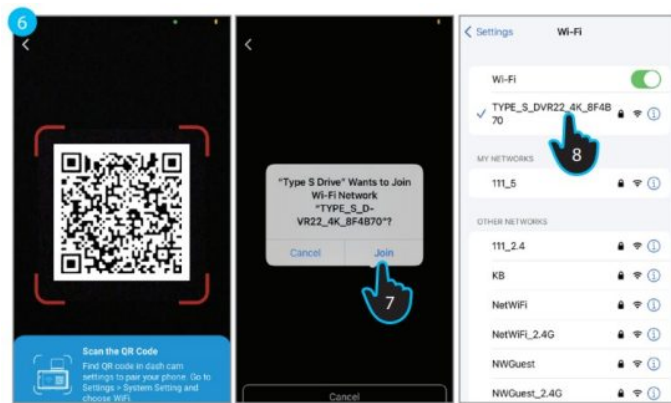
6. Scan the QR code on the camera.
 7. After establishing the connection, you will have the ability to view the live feed from the camera through the App.
- NOTE:** After the initial connection, the App retains your camera's network information. This ensures that you will be automatically directed to the live view the next time you connect, eliminating the need for manual reconnection.



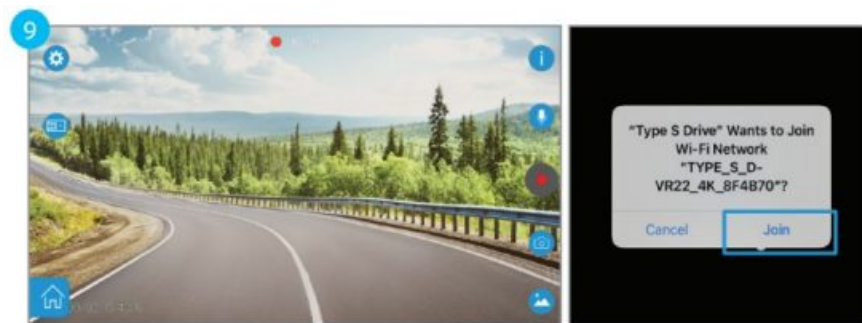
iOS Device (Follow Steps 1-2 from previous instructions)

1. Please make sure Bluetooth, Location Services and Local Network Access are enabled on your device.
2. Run the TYPE S Drive App and select the Dash Camera category.
3. Select AI SERIES DASHCAM from the list of devices. Click Set Up Device.





4. Scan the QR code on the camera.
5. Click Join in the pop-up message when prompted to connect to the camera's WiFi network.
6. (Optional) If there is any issue with the auto pairing, exit the App and navigate to the WiFi setting page on your device. Connect to "TYPE_S_DVR22_4K_XXXXXX" with the default password "12345678", then return to the App.
7. After establishing the connection, you will have the ability to view the live feed from the camera through the App.



NOTE: After the initial connection, the App retains your camera's network information. Simply click Join to reconnect.

USING THE APP

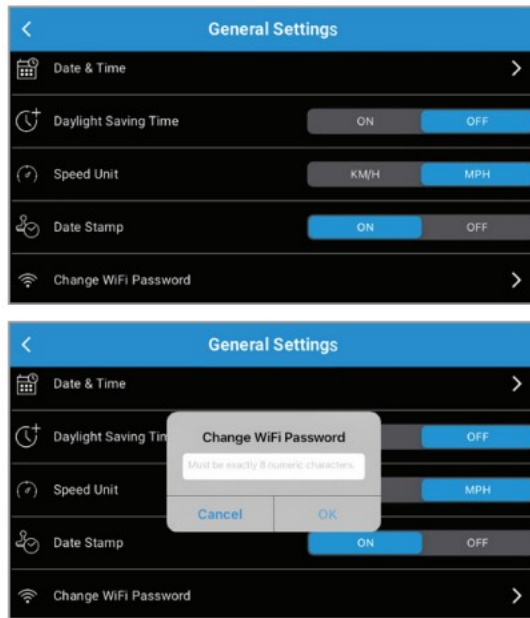



Display Mode

Select from 3 different viewing modes.



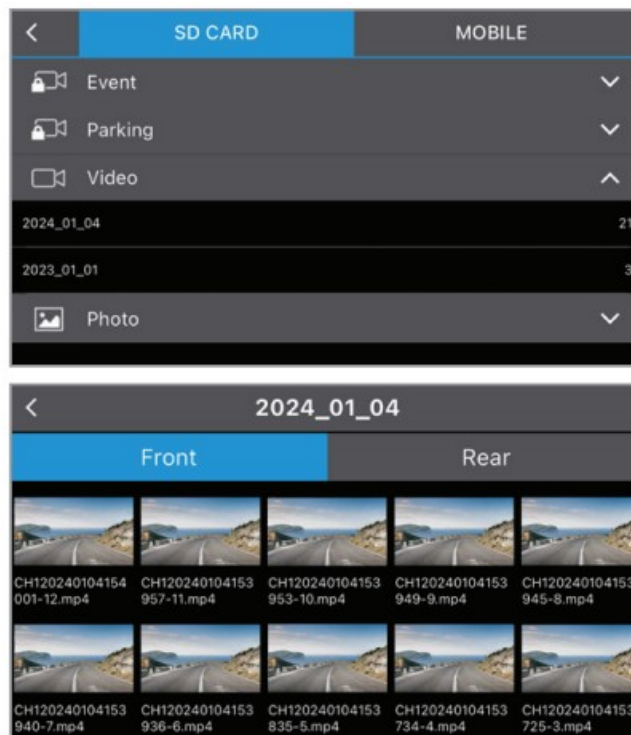
Change WiFi Password




Click  to open Main Menu, then navigate to General Settings > Change WiFi Password. Enter your preferred password (must be exactly 8 numeric characters), then click OK. Connect to your camera's WiFi network again with the revised password.

NOTE: It is recommended to reset your WiFi password upon initial connection to protect your data from unauthorized access.


Gallery



Click  on the main interface to enter the media gallery. Select SD CARD to access all media files sorted from latest to oldest in the MicroSD card. Scroll down the list to access the file.


In each file, you can browse between front and interior camera footages or photos.

SD CARD

Click  to download the selected file onto your smart device or  to delete the file from the MicroSD card.



GPS Information

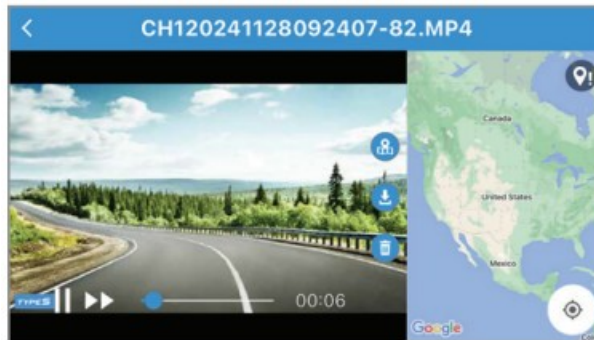
Click  to play the footage, and click  to view embedded GPS location simultaneously during playback.

NOTE: The  icon will only appear if the GPS signal was present while the recording took place.



GPS Signal Status 1

The GPS receiver was still searching for GPS signal when the video was being recorded. If this status persists through multiple recordings, please contact our technical support for troubleshooting.



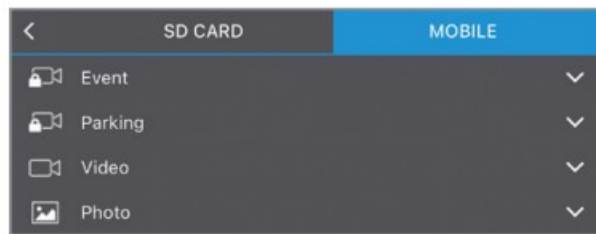
GPS Signal Status 2

Map tracking is not working. Please turn on your mobile data.



MOBILE

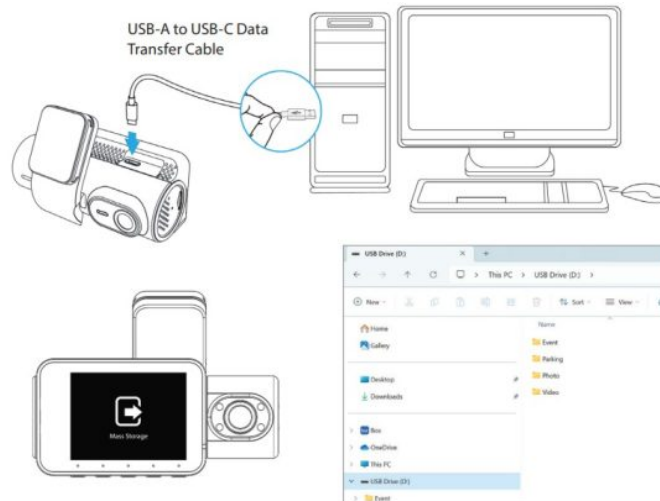
Select MOBILE to access and manage downloaded files on your smart device, even when it is disconnected from the camera.



VIEWING AND MANAGING MEDIA FILES USING A COMPUTER

When connected directly to a computer via the cable provided, a pop-up will prompt you to access Mass Storage Mode. Once confirmed, the screen below will show up. The camera will function as a card reader for the computer, and it will appear as a new USB drive.

NOTE: The camera will stop recording when connected to a computer.



FAQ S

1) Problem: The camera does not provide AI warnings when it should after driving for an extended period.

Solution: Please 1) Enter calibration mode (Menu – Driver Assistance – Recalibrate AI) and adjust the camera angle up or down slightly, then 2) Check to see if GPS signal is received.

2) Problem: The camera is unable to take pictures or record videos.

Solution: Please try formatting the MicroSD card (Menu – General Settings – Format SD Card).

3) Problem: Message showing “SD card error”.

Solution: Please try formatting the MicroSD card (Menu – General Settings – Format SD Card).

4) Problem: The image or video looks foggy.

Solution: Please 1) Make sure that you've removed the protective film cover on the camera lens, and 2) Try wiping the camera lens.

5) Question: Can I use my own MicroSD memory card?

Answer: Yes, you can use your own. If you choose a memory card over 64GB, please make sure it's U3 rated to ensure optimal recording performance.

_information">SAFETY INFORMATION

IMPORTANT SAFETY INSTRUCTIONS

1. SAVE THESE INSTRUCTIONS – This manual contains important safety and operating instructions of 12/24V car charger for Model BT534217.
2. Before using the product, read all instructions and cautionary markings.
3. Do not expose car charger to rain, moisture, or snow.
4. Use of an attachment not recommended or sold by the product manufacturer may result in a risk of fire, electric shock, or injury to persons.
5. To reduce risk of damage to cigarette lighter connector and cord, pull by cigarette lighter connector rather than cord when disconnecting car charger.
6. Make sure the cord is located so that it will not be stepped on, tripped over, or otherwise subjected to damage or stress.
7. Do not operate the car charger with a damaged cord or cigarette lighter connector – replace the damaged items with new factory replacement items immediately.
8. Do not operate the car charger if it has received a sharp blow, been dropped, or otherwise damaged in any way; take it to a qualified serviceperson.
9. Do not disassemble the car charger; take it to a qualified serviceperson when service or repair is required. Incorrect reassembly may result in a risk of electric shock or fire.
0. To reduce risk of electric shock, unplug the charger before attempting any maintenance or cleaning. Turning off controls will not reduce this risk.

WARNING: A failure to read and follow these warnings and instructions may result in a serious accident, including damaged property or a serious injury, including loss of life.

•

The AI Dashcam is designed as an aid to the driver in detecting large stationary objects to help avoid damaging the vehicle. However, you, the driver, must use it safely and properly. Use of the AI Dashcam is not a substitute for safe, proper and legal driving.

- Never depend on the AI Dashcam entirely when driving. The image on the screen is different from actual conditions.

Objects viewed in the AI Dashcam display screen differ from actual distance because a wide-angle lens is used.

- The AI Dashcam “Night Vision” feature that is high performance brightness with colorful image is an aid to a driver but is limited. Always use your own eyes to confirm the vehicle’s surroundings, as the displayed image may be faint or dark, distorted, or not entirely visible.
- Always check behind and all around the vehicle visually with mirrors before proceeding.
- The area displayed by the AI Dashcam is limited. The AI Dashcam does not display objects that are out of the camera’s field of view. The area displayed on the screen may vary according to vehicle orientation or road conditions.
- Be sure to check the camera’s position and mounting angle before each use.
- Do not strike the AI Dashcam. It is a precision instrument. Otherwise, it may malfunction or cause damage resulting in a fire or an electric shock.
- This product will only provide images of items that are within the field of view of the AI Dashcam. Thus, it is imperative that the AI Dashcam should be kept clean and unobstructed.
- Adhere to all applicable traffic laws and motor vehicle regulations applicable to the device.
- Consult local laws and regulations for any restrictions on installation or use.
- Never allow children to play with the device. Small parts may be a choking hazard.
- There is a plastic cover over the AI Dashcam. Do not scratch the cover when cleaning dirt or snow from it.
- If the temperature changes rapidly, the system may not operate normally.
- When strong light directly enters a camera, objects may not be displayed clearly.
- The screen may flicker under fluorescent light.
- The colors of objects on the AI Dashcam may differ from those of the actual objects.
- Do not use alcohol or thinner to clean the camera. This will cause discoloration. To clean the camera, wipe with a clear cloth dampened with mild cleaner diluted with water and then wipe with a dry cloth.

SAFETY AROUND AND BEHIND OTHER VEHICLES

Many preventable injuries and deaths occur in driveways or parking lots when drivers do not see children, pets, or others near their vehicles. Here are a few safety tips that will help you to avoid a back-over accident:

- Walk completely around your vehicle before getting in. Check for kids, toys, and pets before entering the vehicle and starting the engine.
- Know where children are. Have children stand in a place where they are in full view.
- Be aware of young children. Young children are small and hard to see.
- Parents, caregivers and all adults need to be vigilant in supervising children, especially when children are in the yard, driveway or parking lot playing near parked cars.
- Roll down your window so you will be able to hear what is happening outside your vehicle.
- Owners of SUVs, trucks, and vans need to take extra care to avoid hitting or running over a child.
- Teach children to move away from a vehicle whenever it is started.

MAINTENANCE & WARRANTY

CLEANING

- If dirt, rain or snow attaches to the camera, the display screen may not clearly display objects.
If water droplets, snow or mud adhere to the camera lens, rinse with water and wipe with a dry cloth.
- Do not use alcohol, benzene or thinner to clean the AI Dashcam. This will cause discoloration.
To clean the AI Dashcam, wipe with a clean cloth dampened with mild cleaner diluted with water and then wipe with a dry cloth.

WARRANTY

• TYPE S

LIMITED WARRANTY

TYPE S warrants, to the original purchaser, that its products are free from defects in material and workmanship for 1 year from the date of original purchase. Where permitted by law, TYPE S liability shall be limited to that set forth in this limited express warranty. This limited express warranty shall be the exclusive remedy of the purchaser and TYPE S makes no other warranty of any kind aside from the limited express warranty stated above.

NOTE: Warranty only applies for North American customers of purchases made in North America.

CONDITIONS OF WARRANTY

If during the 1 year warranty period your new product is found to be defective, TYPE S will repair such defect, or replace the product, without charge for parts or labor subject to the following conditions:

1. All repairs must be performed by TYPE S.
2. All warranty claims must be accompanied by a copy of the sales receipt or bill of sale.
3. The equipment must not have been altered or damaged through negligence, accident, improper operation, or failure to follow the product instructions for installation, use, or care.
4. The replacement of parts is excluded from the warranty when replacement is necessary due to normal wear and tear.
5. Repair or replacement parts supplied by TYPE S under this warranty are protected only for the unexpired portion of the original warranty.
6. This is a "repair or replace" warranty only, and does not cover the costs incurred for the installation, removal or reinstallation of the product, or damage to any mobile phone device or vehicle.

OWNER'S RESPONSIBILITIES:

TYPE S will make every effort to provide warranty service within a reasonable period of time.

SHOULD YOU HAVE ANY QUESTIONS ABOUT SERVICE RECEIVED OR IF YOU WOULD LIKE ASSISTANCE IN OBTAINING SERVICE, PLEASE CALL TOLL FREE 1.866.294.9244 DURING REGULAR BUSINESS HOURS MONDAY THROUGH FRIDAY 8:00 AM TO 5:00 PM.

NOTE: Toll Free # is for North America Customers ONLY. See Customer service section for customer contact numbers for other regions/offices.

For customer service and technical support, please call us at 1.866.294.9244. If at that time it is determined that a replacement unit is needed, the support representative will issue a Return Authorization and instruct on how to get a new unit. TYPE S makes no other warranty of any kind aside from the limited express warranty stated herein.

DISCLAIMER OF WARRANTIES, INCLUDING WARRANTY OF MERCHANTABILITY AND WARRANTY OF FITNESS FOR PARTICULAR PURPOSE: EXCEPT AS SPECIFICALLY SET FORTH HEREIN, NO WARRANTY OR REPRESENTATION, EXPRESS OR IMPLIED, IS MADE AS TO THE AI DASHCAM. EXCEPT AS EXPRESSLY SET FORTH HEREIN, TYPE S AND/OR ITS AFFILIATES EXPRESSLY DISCLAIMS, WITHOUT LIMITATION, ANY STATUTORY WARRANTIES AND ALL IMPLIED WARRANTIES, INCLUDING ANY IMPLIED WARRANTY OF MERCHANTABILITY OR FITNESS FOR A PARTICULAR PURPOSE.

TYPE S and/or its affiliates do not guarantee or promise that the user of AI Dashcam will not be in an accident or otherwise not collide with an object and/or person. Our AI Dashcam is not intended in any way to be a substitute for careful and cautious driving or for the consistent adherence to all applicable traffic laws and motor vehicle safety regulations.

The AI Dashcam is not intended to be a substitute for rearview mirrors or for any other motor vehicle equipment mandated by law. Even when properly installed, our AI Dashcam has a limited field of vision and does not provide a comprehensive view of the rear area of the vehicle.

TYPE S and/or its affiliates are not responsible for a user's intended or actual use of the AI Dashcam. In no event shall TYPE S and/or its affiliates have any liability for any losses (whether direct or indirect, in contract, tort or otherwise) incurred in connection with the AI Dashcam, including but not limited to damaged property, personal injury and/or loss of

life. Neither shall TYPE S and/or its affiliates have any liability for any decision, action or inaction taken by any person in reliance on the AI Dashcam, or for any delays, inaccuracies and/or errors in connection with the AI Dashcam and its functioning.

TYPE S and/or its affiliates shall have no responsibility or liability for damage and/or injury resulting from accidents occurring with vehicles having the installed, and TYPE S and/or its affiliates, the manufacturer, distributor and seller shall not be liable for any injury, loss or damage, incidental or consequential, arising out of the use or intended use of the product.

GENERAL INFORMATION

CUSTOMER SERVICE/CONTACT

IF YOU ARE EXPERIENCING ANY ISSUES WITH THE PRODUCT DURING OPERATION, DO NOT RETURN THE PRODUCT TO THE STORE. CONTACT TYPE S DIRECTLY FOR INSTRUCTIONS ON HOW TO RETURN/ EXCHANGE THE PRODUCT.

FCC Compliance Statement:

This device complies with Part 15 of the FCC rules. Operation is subject to the following two conditions:

(1) This device may not cause harmful interference, and **(2)** this device must accept any interference received, including interference that may cause undesired operation.

WARNING: Changes or modifications to this unit not expressly approved by the party responsible for compliance could void the user's authority to operate the equipment. The manufacturer is not responsible for any radio or TV interference caused by unauthorized modifications or change to this equipment. Such modifications or change could void the user's authority to operate the equipment.

NOTE: This equipment has been tested and found to comply with the limits for a Class B digital device, pursuant to part 15 of the FCC Rules. These limits are designed to provide reasonable protection against harmful interference in a residential installation. This equipment generates uses and can radiate radio frequency energy and, if not installed and used in accordance with the instructions, may cause harmful interference to radio communications. However, there is no guarantee that interference will not occur in a particular installation. If this equipment does cause harmful interference to radio or television reception, which can be determined by turning the equipment off and on, the user is encouraged to try to correct the interference by one or more of the following measures:

- Reorient or relocate the receiving antenna.
- Increase the separation between the equipment and receiver.
- Connect the equipment into an outlet on a circuit different from that to which the receiver is connected.
- Consult the dealer or an experienced radio/TV technician for help.

This equipment complies with FCC RF radiation exposure limits set forth for an uncontrolled environment. In order to avoid the possibility of exceeding the FCC radio frequency exposure limits, human proximity to the antenna shall not be less than 20cm during normal operation.

T401

Dual View 4K Dashcam With AI Powered Driver Assistance

BT534217

Responsible Party:

TYPE S

2975 Red Hill Ave., Ste. 100,
Costa Mesa, CA 92626, U.S.A.

Tel: 1-[866-294-9244](tel:866-294-9244)


Android is a trademark of Google Inc.

iPhone, iPad, Mac and iPod touch are trademarks of Apple Inc.

3M VHB™ is a trademark of 3M Company.

TOURING ITEMS
TYPES[®]
A Horizon Brands Company

Documents / Resources

	TYPE S T401 Dual View 4K Dashcam With AI Powered Driver Assistance [pdf] Instruction Manual T401 Dual View 4K Dashcam With AI Powered Driver Assistance, T401, Dual View 4K Dashcam With AI Powered Driver Assistance, Dashcam With AI Powered Driver Assistance, AI Powered Driver Assistance, Powered Driver Assistance, Driver Assistance
---	---

References

- [TYPE S Auto](#)
- [User Manual](#)

[Manuals](#), [Privacy Policy](#)

This website is an independent publication and is neither affiliated with nor endorsed by any of the trademark owners. The "Bluetooth®" word mark and logos are registered trademarks owned by Bluetooth SIG, Inc. The "Wi-Fi®" word mark and logos are registered trademarks owned by the Wi-Fi Alliance. Any use of these marks on this website does not imply any affiliation with or endorsement.