

TYGER TG-LX3C82318 LanderX Running Board



TYGER TG-LX3C82318 LanderX Running Board Instruction Manual

[Home](#) » [TYGER](#) » TYGER TG-LX3C82318 LanderX Running Board Instruction Manual 

Contents

- 1 TYGER TG-LX3C82318 LanderX Running Board
- 2 Product Information
- 3 Product Usage Instructions
- 4 BEFORE INSTALLATION
- 5 PART LIST
- 6 Documents / Resources
 - 6.1 References
- 7 Related Posts



TYGER TG-LX3C82318 LanderX Running Board



Product Information

Specifications:

- **Model:** TYGER LanderX
- **Part Number:** TG-LX3C82318

Torque Values:

- **Class 8.8 Torque (ft-lbs):**
 - 6mm: 6-7
 - 8mm: 15-16
 - 10mm: 31-32
 - 12mm: 54-55
 - 14mm: 87-88
- **Class 10.9 Torque (ft-lbs):**
 - 6mm: 6-7
 - 8mm: 22-23
 - 10mm: 44-45
 - 12mm: 78-79
 - 14mm: 125-126

Product Usage Instructions

Before Installation:

Read the instructions carefully before starting the installation. Remove contents from the box and verify all parts are present. If missing parts or any damage is found, take a picture for claim purposes.

Installation Procedure:

1. Step 1:

- Start the installation under the Passenger/Right side of the vehicle.
- For Early 2019 models, mount the Mounting Brackets to specific threaded mounting holes.

2. Step 2:

Attach the Mounting Bracket to the factory threaded holes using specific bolts and washers. Do not tighten hardware.

3. Step 3:

Attach the remaining Mounting Brackets along the rocker panel without tightening hardware.

4. Step 4:

Select the Passenger/Right TYGER LanderX and attach it to the Mounting Brackets using Combo Bolts. Do not tighten hardware.

5. Step 5:

Level and adjust the TYGER LanderX, then fully tighten all hardware.

6. Step 6:

Repeat Steps 1-5 to attach the Driver/Left TYGER LanderX.

7. Step 7:

Do periodic inspections to ensure all hardware is secure and tight.

Frequently Asked Questions (FAQ):

1. Q: What should I do if I find missing parts or damage before installation?

A: Take a picture for claim purposes and visit www.tygerauto.com/contact to file your claim.

TYGER LanderX

BEFORE INSTALLATION

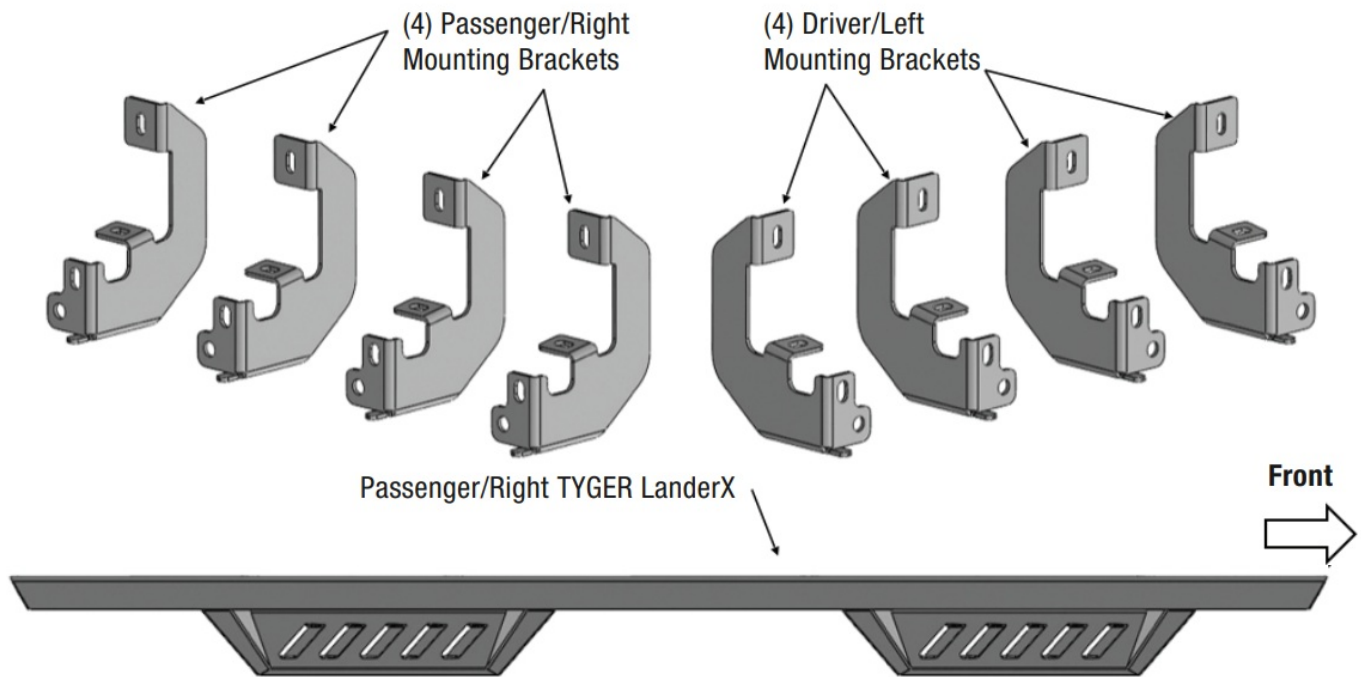
READ INSTRUCTIONS CAREFULLY BEFORE STARTING INSTALLATION. REMOVE CONTENTS FROM BOX AND VERIFY ALL PARTS ARE PRESENT. FAILURE TO IDENTIFY DAMAGE BEFORE INSTALLATION COULD LEAD TO A REJECTION OF ANY CLAIM. IF MISSING PARTS OR ANY DAMAGE FOUND, PLEASE TAKE A PICTURE FOR THE CLAIM PURPOSE. TO FILE YOUR CLAIM, PLEASE VISIT: WWW.TYGERAUTO.COM/CONTACT

TORQUE VALUES

Fastener Size	Class 8.8 Torque (ft-lbs)	Class 10.9 Torque (ft-lbs)
6mm	6-7	6-7
8mm	15-16	22-23
10mm	31-32	44-45
12mm	54-55	78-79
14mm	87-88	125-126

PART LIST

- x1 Driver/Left TYGER LanderX
- x1 Passenger/Right TYGER LanderX
- x4 Driver/Left Mounting Brackets
- x4 Passenger/Right Mounting Brackets
- x16 8mm x 30mm Hex Bolts
- x16 8mm x 25mm Combo Bolts
- x16 8mm Lock Washers
- x16 8mm x 24mm OD x 2mm Flat Washers



PROCEDURE:

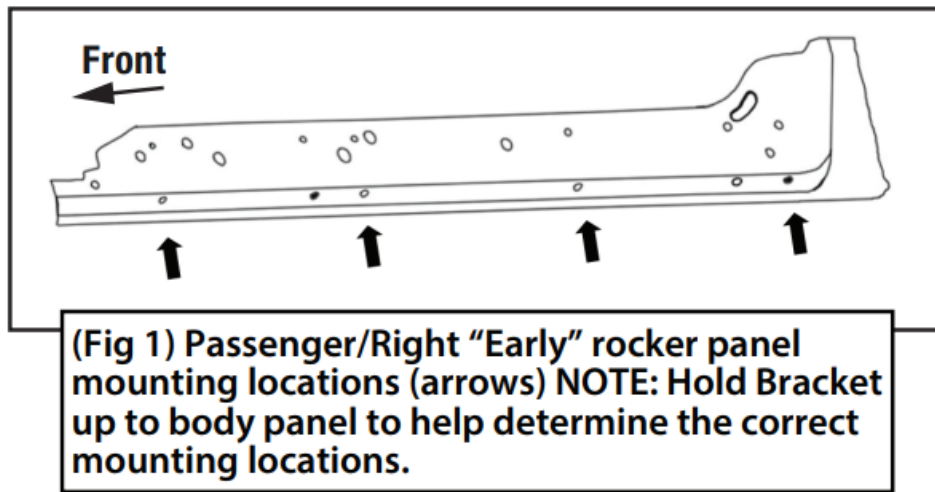
REMOVE CONTENTS FROM BOX. VERIFY ALL PARTS ARE PRESENT. READ INSTRUCTIONS CAREFULLY. ASSISTANCE IS RECOMMENDED.

1. STEP 1

Start the installation under the Passenger/Right side of the vehicle.

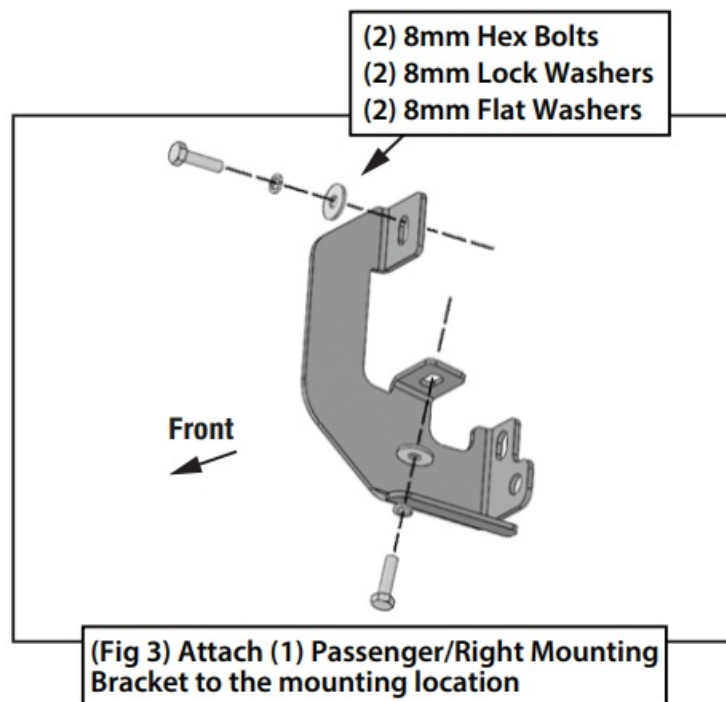
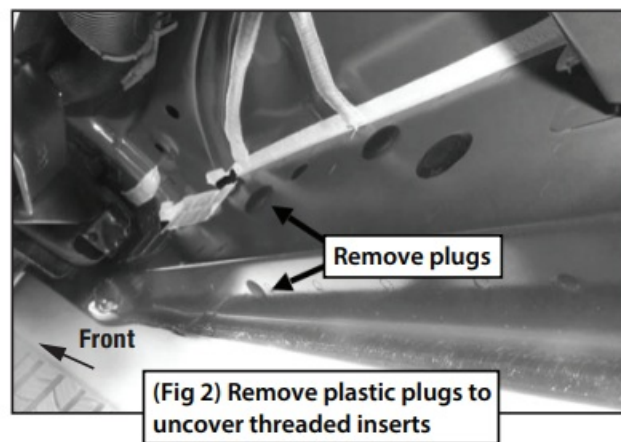
- For “Early” 2019 models, locate the 6 plugs along the bottom edge of the body. Mounting Brackets will bolt to the 1st, 3rd, 4th and 6th threaded mounting holes (Fig 1).
- For “Late” 2019 models, all (4) mounting locations will be used.

2.



STEP 2

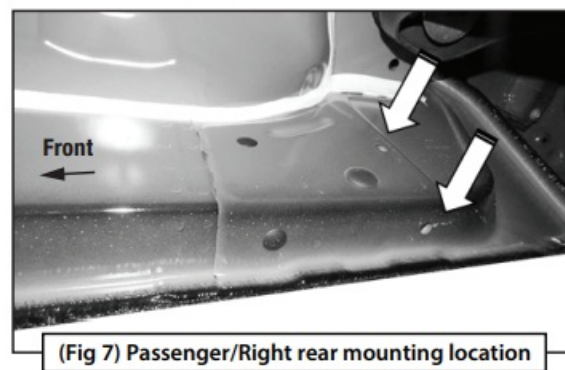
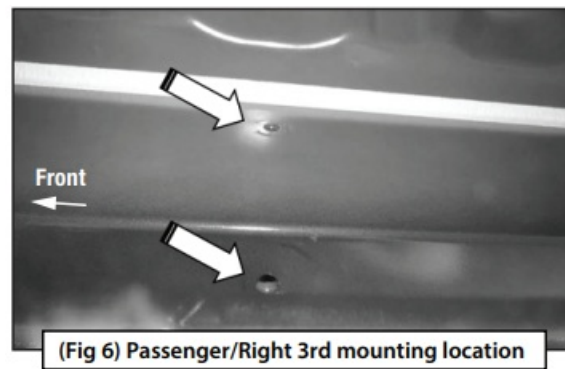
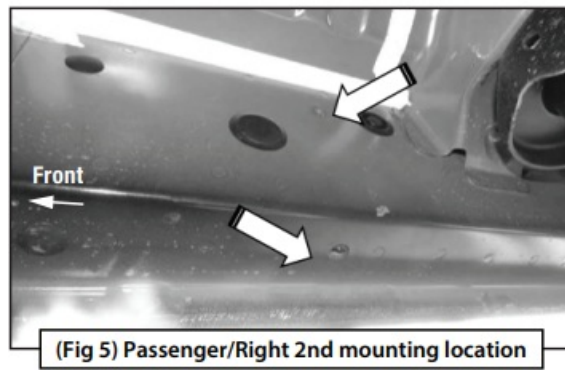
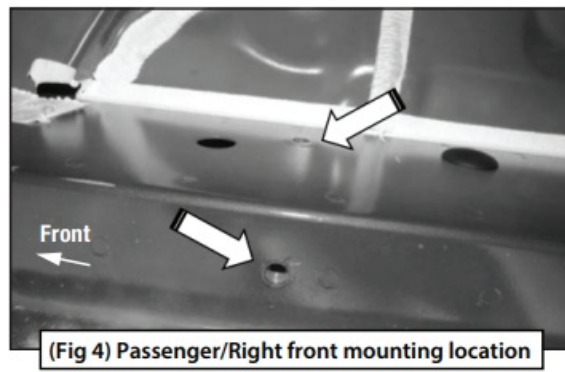
- Remove the plastic plugs from the passenger/right front mounting location. Select (1) Mounting Bracket. Attach the Mounting Bracket to the factory threaded holes with (2) 8mm Hex Bolts, (2) 8mm Lock Washers and (2) 8mm Flat Washers (Figs 2 & 3). DO NOT tighten hardware.



3. STEP 3

- Repeat STEPS 1 & 2 to attach (3) Mounting Brackets to the (3) remaining locations along the rocker panel (Figs 4-7). DO NOT tighten hardware.

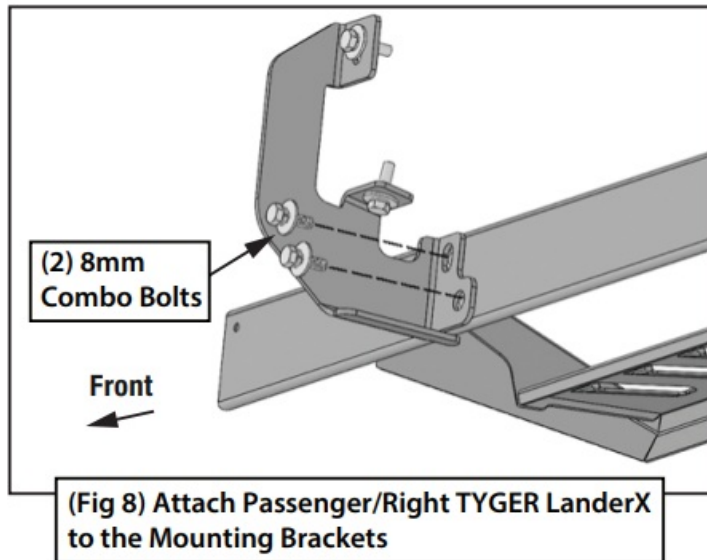
Passenger/Right side Installation Pictured



4. STEP 4

- Select the Passenger/Right TYGER LanderX. Attach the TYGER LanderX to the (4) Mounting Brackets with (8) 8mm Combo Bolts (Fig 8). DO NOT tighten hardware.

Passenger/Right side Installation Pictured



5. STEP 5

- Level and adjust the TYGER LanderX, then fully tighten all

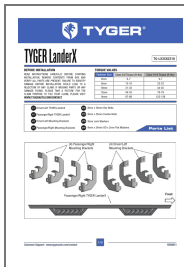
6. STEP 6

- Repeat STEPS 1-5 to attach the Driver/Left TYGER LanderX.

7. STEP 7

- Do periodic inspections to the installation to make sure that all hardware is secure and tight.

Documents / Resources



[TYGER TG-LX3C82318 LanderX Running Board](#) [pdf] Instruction Manual
TG-LX3C82318 LanderX Running Board, TG-LX3C82318, LanderX Running Board, Running Board

References

- [Tyger Auto: Contact Us](#)
- [User Manual](#)

[Manuals+](#), [Privacy Policy](#)

This website is an independent publication and is neither affiliated with nor endorsed by any of the trademark owners. The "Bluetooth®" word mark and logos are registered trademarks owned by Bluetooth SIG, Inc. The "Wi-Fi®" word mark and logos are registered trademarks owned by the Wi-Fi Alliance. Any use of these marks on this website does not imply any affiliation with or endorsement.