

TYGER TG-LD2F60358 Lander Running Board



# TYGER TG-LD2F60358 Lander Running Board Instruction Manual

[Home](#) » [TYGER](#) » TYGER TG-LD2F60358 Lander Running Board Instruction Manual 

## Contents

- [1 TYGER TG-LD2F60358 Lander Running Board](#)
- [2 Product Information](#)
- [3 Product Usage Instructions](#)
- [4 BEFORE INSTALLATION](#)
- [5 Parts List](#)
- [6 INSTRUCTION](#)
- [7 Documents / Resources](#)
  - [7.1 References](#)



**TYGER TG-LD2F60358 Lander Running Board**



## Product Information

### Specifications:

- Brand: TYGER LANDER™
- Model: TG-LD2F60358
- Fastener Torque Values:

Fastener Size	6mm	8mm	10mm	12mm	14mm
Class 8.8 Torque (ft-lbs)	6-7	15-16	31-32	54-55	87-88
Class 10.9 Torque (ft-lbs)	6-7	22-23	44-45	78-79	125-126

### Parts List:

- x1 Driver/Left Tyger Lander
- x1 Passenger/Right Tyger Lander

## Product Usage Instructions

### Step 1: Remove Contents and Verify Parts

Remove all contents from the box and ensure all parts are present. Read the instructions carefully before proceeding with installation.

### Step 2: Front Mounting Bracket Installation

Starting from underneath the Passenger/Right body panel, locate the front mounting location and remove the plastic plugs covering the holes. Attach the Passenger/Right Front Mounting Bracket using specified hardware.

### Frequently Asked Questions (FAQ):

**Q:** What should I do if I find missing parts or damage?

**A:** If you find any missing parts or damage, please take a picture for claim purposes and visit [www.tygerauto.com/contact](http://www.tygerauto.com/contact) to file your claim.

**Q:** Where can I find customer support?

**A:** For customer support, please visit [www.TygerAuto.com/contact-us.html](http://www.TygerAuto.com/contact-us.html).

## BEFORE INSTALLATION

READ INSTRUCTIONS CAREFULLY BEFORE STARTING INSTALLATION. REMOVE CONTENTS FROM BOX AND VERIFY ALL PARTS ARE PRESENT. FAILURE TO IDENTIFY DAMAGE BEFORE INSTALLATION COULD LEAD TO A REJECTION OF ANY CLAIM. IF MISSING PARTS OR ANY DAMAGE FOUND, PLEASE TAKE A PICTURE FOR THE CLAIM PURPOSE. TO FILE YOUR CLAIM, PLEASE VISIT:

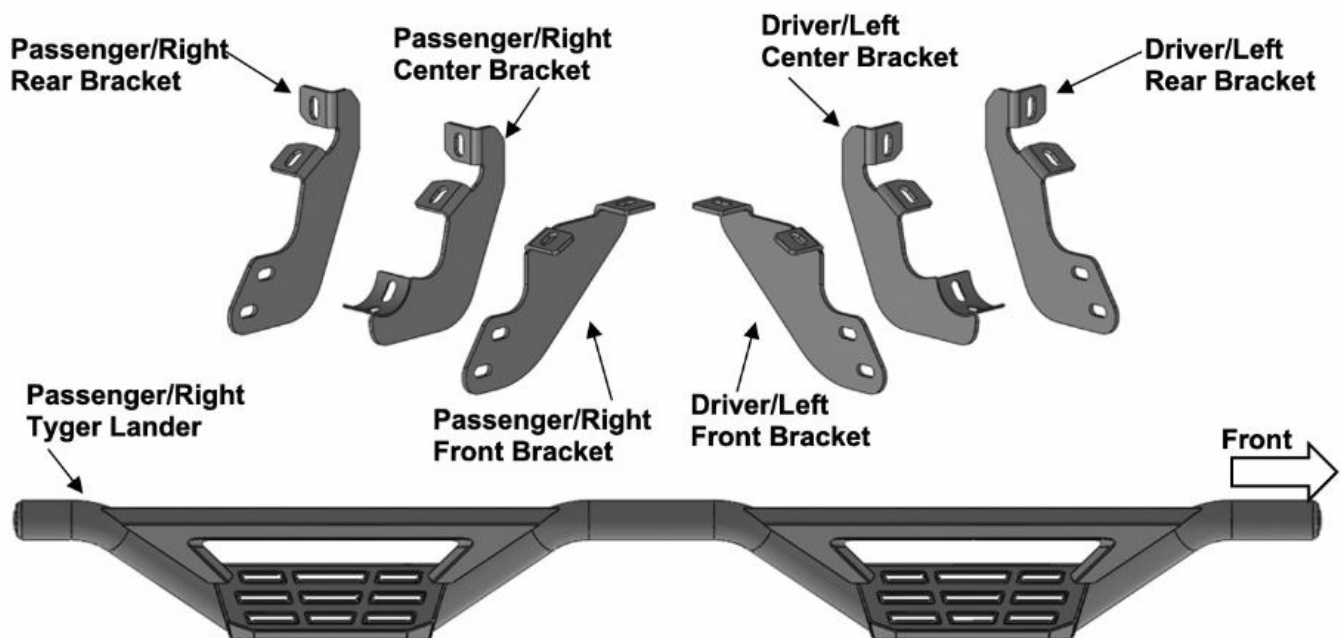
[WWW.TYGERAUTO.COM/CONTACT](http://WWW.TYGERAUTO.COM/CONTACT)

## TORQUE VALUES

Fastener Size	Class 8.8 Torque (ft-lbs)	Class 10.9 Torque (ft-lbs)
6mm	6-7	6-7
8mm	15-16	22-23
10mm	31-32	44-45
12mm	54-55	78-79
14mm	87-88	125-126

## Parts List

- **x1** Driver/Left Tyger Lander
- **x1** Passenger/Right Tyger Lander
- **x1** Driver/Left Front Mounting Bracket
- **x1** Passenger/Right Front Mounting Bracket
- **x1** Driver/Left Center Mounting Bracket
- **x1** Passenger/Right Center Mounting Bracket
- **x1** Driver/Left Rear Mounting Bracket
- **x1** Passenger/Right Rear Mounting Bracket
- **x8** 10mm x 35mm Hex Bolts
- **x12** 10mm x 25mm Hex Bolts
- **x12** 10mm Lock Washers
- **x28** 10mm x 27mm OD x 3mm Flat Washers
- **x8** 10mm Nylon Lock Nuts
- **x4** 8mm x 25mm Combo Bolts



## INSTRUCTION

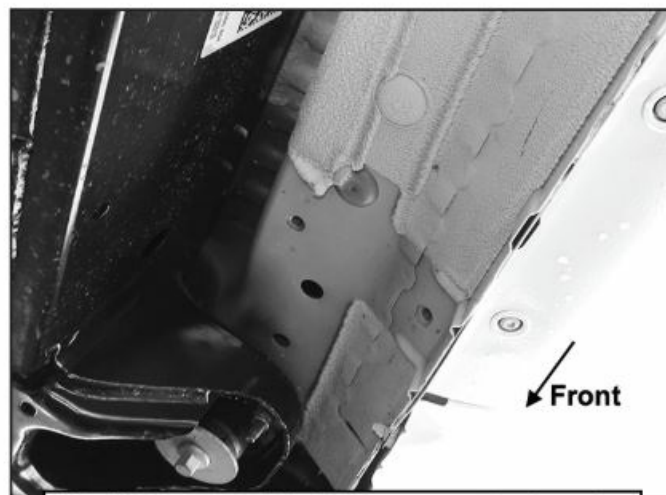
### STEP 1

REMOVE CONTENTS FROM BOX. VERIFY ALL PARTS ARE PRESENT. READ INSTRUCTIONS CAREFULLY BEFORE STARTING INSTALLATION.

### STEP 2

Starting from underneath the Passenger/Right body panel, locate the front mounting location and the threaded holes in the body panel (Fig 1). Remove the plastic plugs covering the holes.

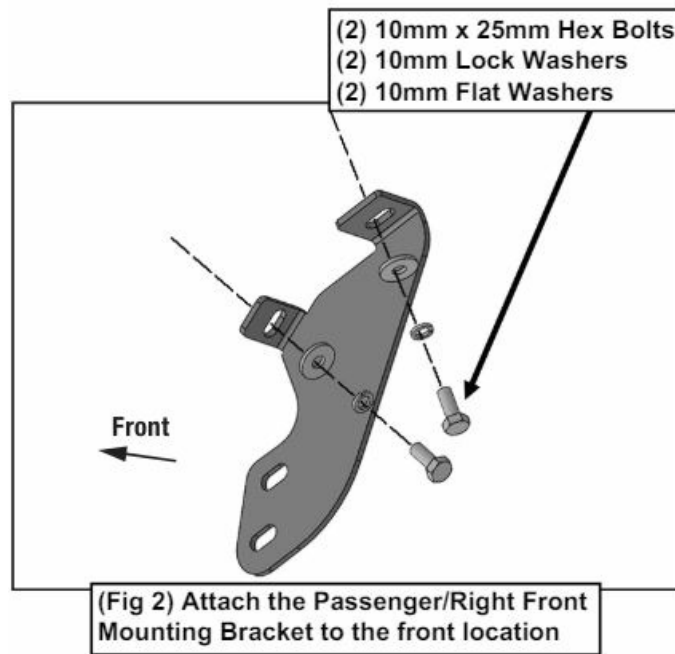
**Passenger/Right Side Installation Pictured**



**(Fig 1) Passenger/Right front mounting location**

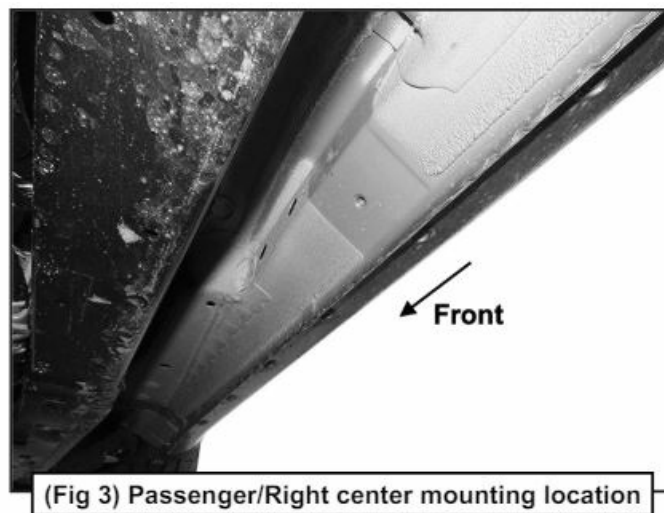
### STEP 3

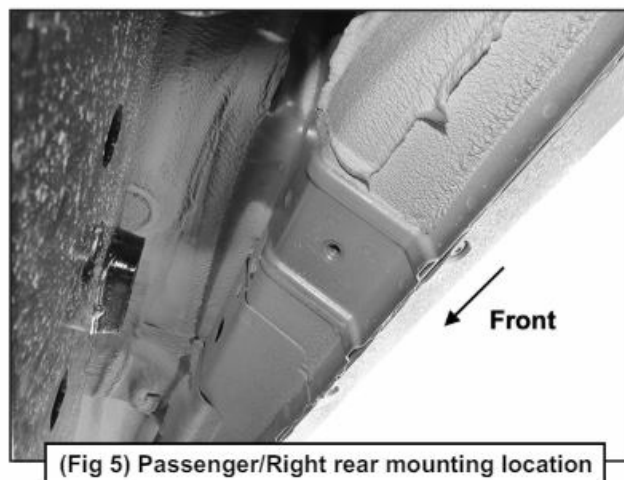
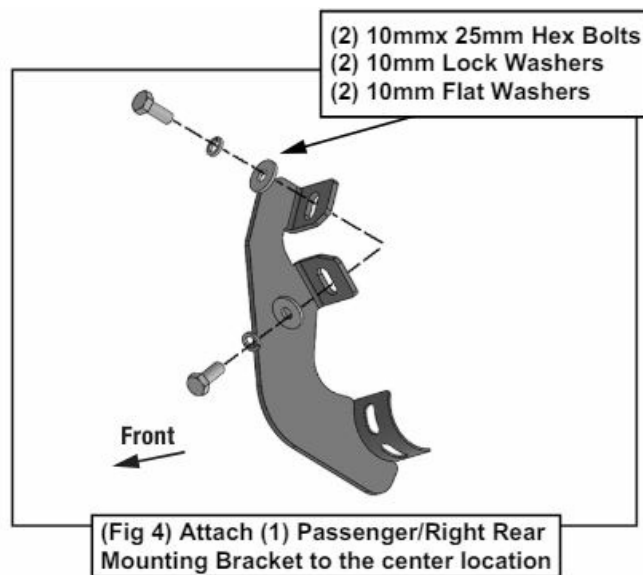
Select the Passenger/Right Front Mounting Bracket. Attach the Mounting Bracket to the front location with (2) 10mm x 25mm Hex Bolts, (2) 10mm Lock Washers and (2) 10mm Flat Washers (Fig 2). DO NOT tighten hardware.



#### STEP 4

Repeat STEPS 2 & 3 to attach (2) Rear Mounting Brackets to the center and rear locations (Figs 3-5). DO NOT tighten hardware.

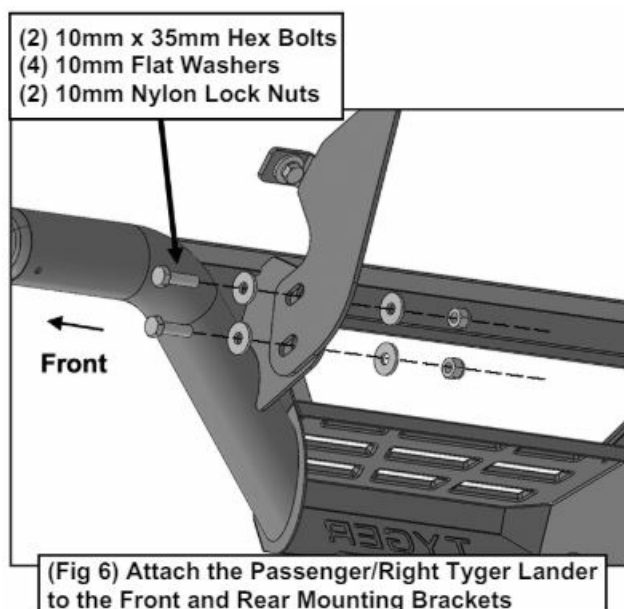




## STEP 5

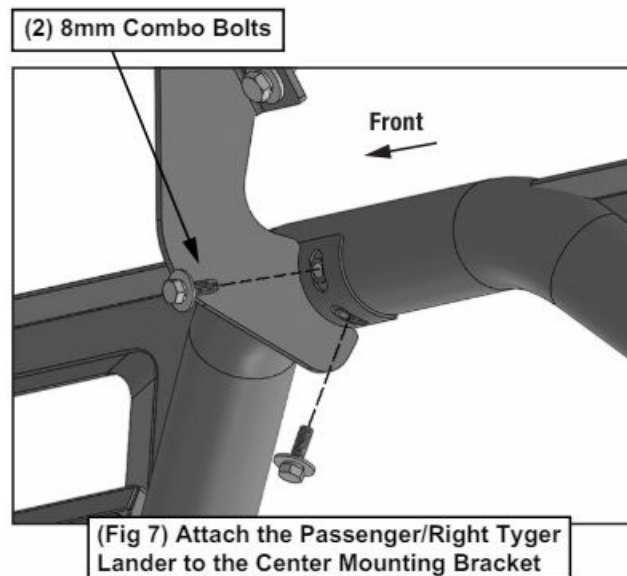
Select the Passenger/Right Tyger Lander. Place the Tyger Lander onto the cradle of the Center Mounting Bracket.

**IMPORTANT:** DO NOT slide the Tyger Lander front to back or damage to the finish may result. Attach the Tyger Lander to the Front and Rear Mounting Brackets with (4) 10mm x 35mm Hex Bolts, (8) 10mm Flat Washers and (4) 10mm Nylon Lock Nuts (Fig 6). DO NOT tighten hardware.



## STEP 6

Attach the Tyger Lander to the Center mounting Bracket with (2) 8mm Combo Bolts (Fig 7). DO NOT tighten hardware.



## STEP 7

Level and adjust the Tyger Lander and tighten all hardware.

## STEP 8

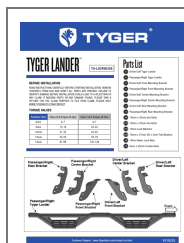
Repeat STEPS 1-7 to attach the Driver/Left Tyger Lander.

## STEP 9

Do periodic inspections to the installation to make sure that all hardware is secure and tight.

Customer Support: [www.TygerAuto.com/contact-us.html](http://www.TygerAuto.com/contact-us.html)

## Documents / Resources



[TYGER TG-LD2F60358 Lander Running Board](#) [pdf] Instruction Manual  
TG-LD2F60358 Lander Running Board, TG-LD2F60358, Lander Running Board, Running Board, Board

## References

- [User Manual](#)

