

Twyford

Rails Doc M Value
Pack With Grab
Rails and Seat



Twyford Rails Doc M Value Pack With Grab Rails and Seat Installation Guide

[Home](#) » [Twyford](#) » Twyford Rails Doc M Value Pack With Grab Rails and Seat Installation Guide 

Contents

- [1 Twyford Rails Doc M Value Pack With Grab Rails and Seat](#)
- [2 Specifications](#)
- [3 Installation](#)
- [4 Product Usage Instructions](#)
- [5 PRODUCT INFORMATION](#)
- [6 COMPRISING COMPONENTS](#)
- [7 FAQs](#)
- [8 Documents / Resources](#)
 - [8.1 References](#)
- [9 Related Posts](#)

Twyford

Twyford Rails Doc M Value Pack With Grab Rails and Seat



TWYFORD RIMLESS DOC M VALUE PACK – CLOSE-COUPLED



APPROVED



HEALTHCARE



SPECIAL NEEDS



COMMERCIAL



DOMESTIC



EDUCATION



HOTEL & LEISURE



Specifications

- Product Name: Twyford Rails
- Model Number: 972.181.00.0(00)
- Guarantee: 2 years

Installation

- For proper installation, please refer to the installation manual provided with the product.

Guarantee Terms and Conditions

- The guarantee does not cover damage or defects caused by general wear and tear.
- The guarantee does not cover compensation for loss of use of the product or consequential loss of any kind.
- Contact the Technical Department at 01926 516800 for assistance if the product does not function correctly.

Product Usage Instructions

Technical Support

For technical support, call the hotline at 01926 516800. Trained advisors can offer installation advice, maintenance checks, and solutions to fix any problems.

General Cleaning

To clean the product, wipe with a soft damp cloth. Stains can be removed using washing-up liquid. Avoid abrasive detergents, disinfectants, or those containing alcohol, hydrochloric acid, or phosphoric acid.

Electrical Safety

If installing stainless steel rails in a wet area, consult a qualified electrician for advice on earthing protection requirements.

PRODUCT INFORMATION



- PK8145WH Twyford DOC M rimless value pack – white rails
- PK8145BE Twyford DOC M rimless value pack – blue rails
- PK8145GY Twyford DOC M rimless value pack – grey rails

COMPRISING COMPONENTS



- Avalon rimless HO pan and fixings
- Avalon cistern, fittings, and spatula lever –
- 4 or 6 litre
- Avalon seat ring, stainless steel hinge and
- stability buffers
- Handrinse basin 1 centre tap hole 400mm
- Spray mixer lever-operated
- TMV3 thermostatic mixing valve
- 5 x DOC M support rails
- 1 x DOC M hinged support rail with
- toilet roll holder
- Wall bolts (pair)
- Grid waste

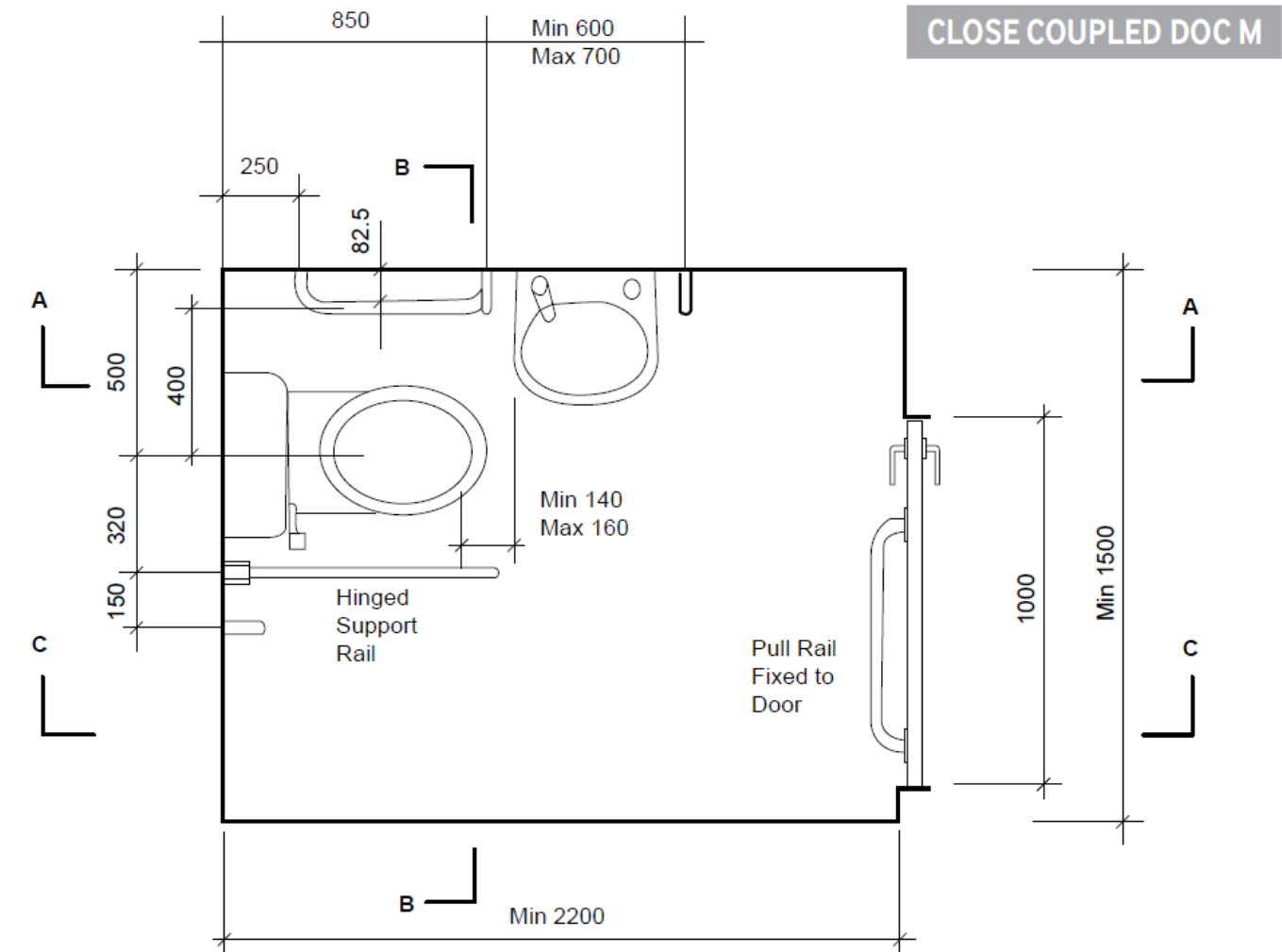


- **MATERIAL** Vitreous China/Grab rails in powder-coated steel
- **COLOUR/FINISH** Vitreous china in white/grab rails in white, blue, or grey options
- **MANUFACTURER** Twyford Bathrooms
- **FIXING** Fixing instructions, layout guidelines and LANTAC certificate provided
- **STANDARDS** WC – EN 997 / Basin EN 14688
- **APPROVALS** LABC LANTAC Approved Ref 426-5-20/ TMV3 Scheme Approval/WRAS
- **PRODUCT DIMENSIONS** Please refer to layout guidelines on page 183
- **APPLICATIONS** Disabled toilet accommodation in offices, shops, factories, educational premises, or any premises where the public is admitted

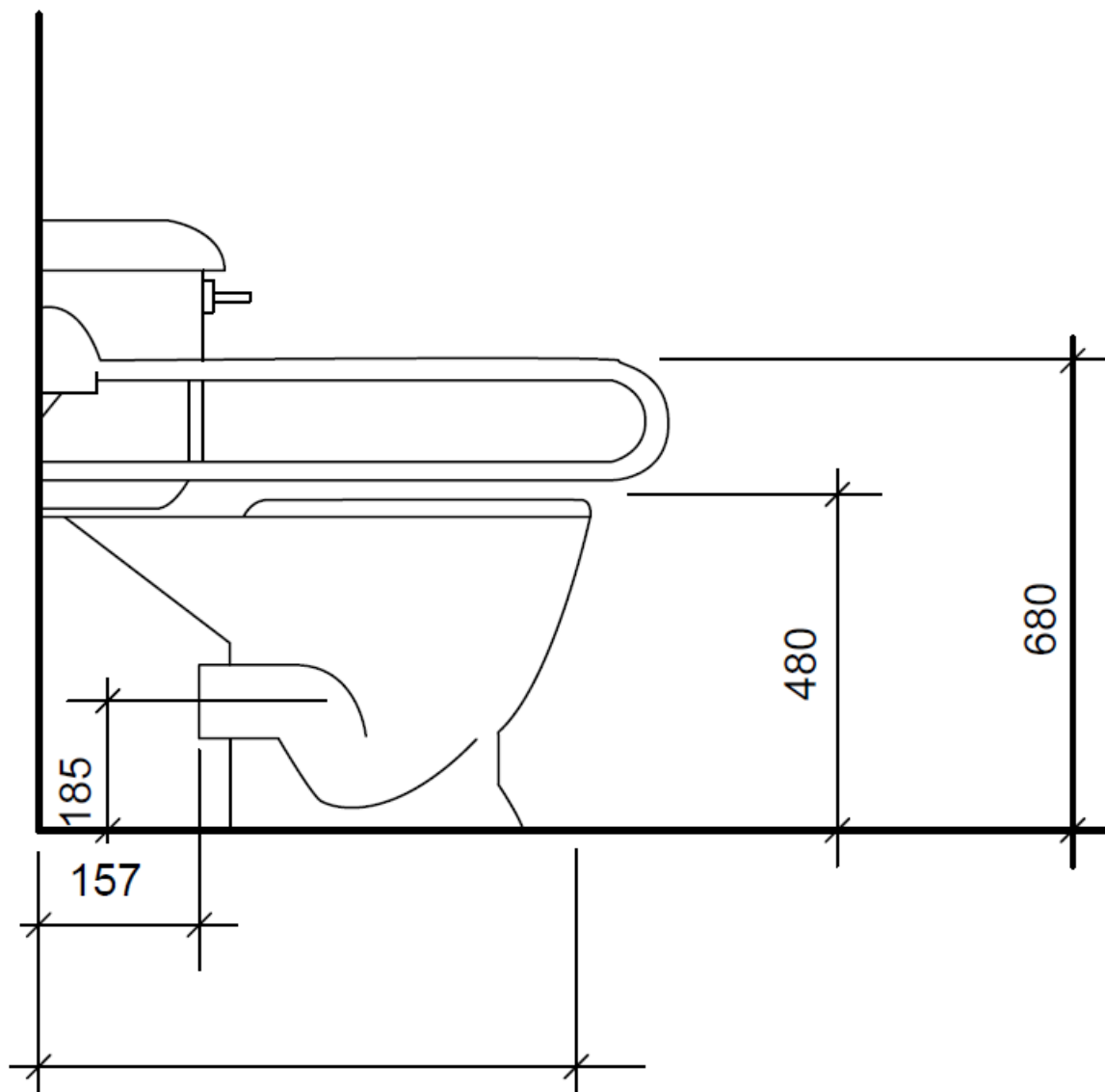
ADDITIONAL INFORMATION The products included in the set and layout are the layout details by those laid down in the building regulations 2003 approved Document M effective 1st May 2004

Colour/Finish	RAL	LRV
White	9016	94
Dark Blue	5011	27
Grey	7005	51

CLOSE COUPLED DOC M



Plan of Typical Installation



View on C-C

- www.sonasbathrooms.com

FAQs

Q: What should I do if I encounter problems during the guarantee period?

A: Contact the Technical Department at 01926 516800 with your proof of purchase for assistance.

Q: How can I reach customer support for queries?

A: Contact via email at enquiries@geberit.co.uk, visit the website at www.twyfordbathrooms.com, or call +44 (0) 1926 516800.

Q: How do I ensure the longevity of the product finish?

A: Clean the product with a soft damp cloth and avoid using bathroom cleaning products that can damage the surface.

Documents / Resources

	<p>Twyford Rails Doc M Value Pack With Grab Rails and Seat [pdf] Installation Guide</p> <p>Rails Doc M Value Pack With Grab Rails and Seat, Rails, Doc M Value Pack With Grab Rails and Seat, With Grab Rails and Seat, Grab Rails and Seat, Rails and Seat, Seat</p>
--	--

References

- [Spitzenleistungen in der Sanitärtechnik. Weltweit. | Geberit Gruppe](#)
- [Twyford Homepage | Geberit](#)
- [User Manual](#)

[Manuals+](#), [Privacy Policy](#)

This website is an independent publication and is neither affiliated with nor endorsed by any of the trademark owners. The "Bluetooth®" word mark and logos are registered trademarks owned by Bluetooth SIG, Inc. The "Wi-Fi®" word mark and logos are registered trademarks owned by the Wi-Fi Alliance. Any use of these marks on this website does not imply any affiliation with or endorsement.