



TWO TREES SK1 FDM High Speed 3D Printer Instruction Manual

[Home](#) » [TWO TREES](#) » TWO TREES SK1 FDM High Speed 3D Printer Instruction Manual 



SK1 3D PRINTER

**700
MM/S**
Max Printing
Speed

**20000
MM/S²**
Max
Acceleration

**300
°C**
Nozzle
Temperature

**254*254*254
MM**
Printing Size

Contents

- [1 SK1 FDM High Speed 3D Printer](#)
- [2 ABOUT YOUR PRINTER](#)
- [3 FUNCTION DEFINITION](#)
- [4 MACHINE PARAMETERS](#)
- [5 ACCESSORIES LIST](#)
- [6 THE MACHINE ASSAEMBLE](#)
- [7 Documents / Resources](#)
 - [7.1 References](#)
- [8 Related Posts](#)

SK1 FDM High Speed 3D Printer



Note: The picture is for reference only, the actual product shall prevail

A LETTER TO A CLIENT

Dear Customer:

Thank you for choosing our brand.

We have always been customer-oriented, continuous innovation, the pursuit of excellence, so that everyone can have a rich experience in the use of the process.

I hope you enjoy your time with the two trees.

If you have any questions, please feel free to contact our customer service of each purchase platform.

Other contact channels are:

Website: www.twotrees3d.com

After-sales Email: service@twotrees3d.com

Consultation Email: info@twotrees3d.com

We will contact you within 24 hours.

Wish you a happy life!

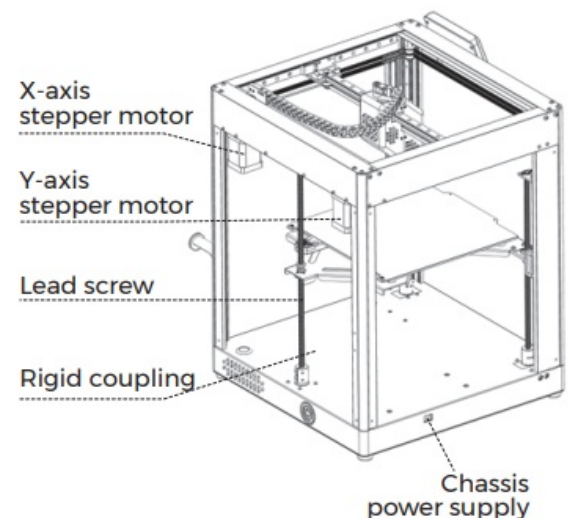
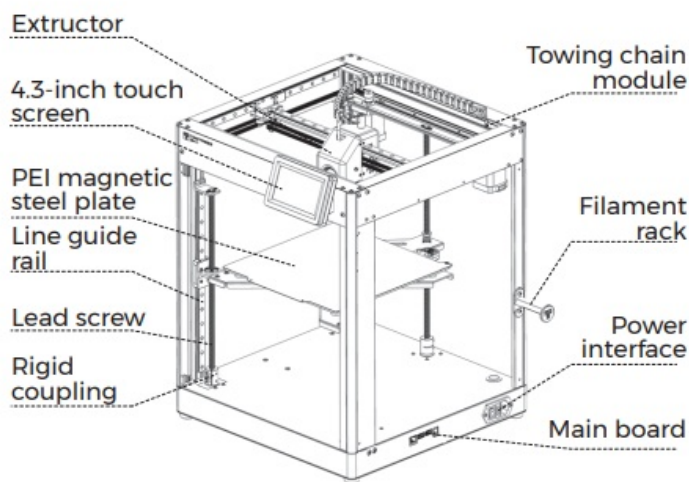
The Two Trees team

MATTERS NEEDING ATTENTION

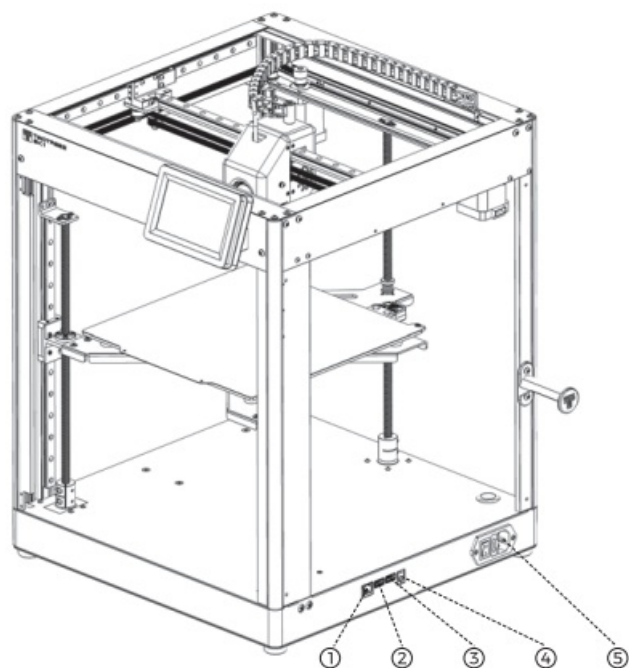
1. After unpacking, please remove the corresponding fixation of XYZ axis according to the instructions to avoid

- damage caused by forced movement of the machine.
2. Confirm whether the voltage gear of the machine is matched before starting the machine to avoid damage to the machine power supply due to the mismatch of voltage gear.
 3. The printer has 110VAC / 230VAC and other high voltage power interfaces. Do not use any other power cord other than the one provided. Use approved power cords and sockets to ensure power cords are not damaged.
 4. Do not place the printer in a large vibration or other unstable environment, the machine shake will affect the printer print quality. It is recommended to place it in a well-ventilated and low-dust environment to avoid overheating of the machine.
 5. Risk of scalding: Do not touch the nozzle and hot bed when the printer is working to prevent high temperature scalding. After printing, timely using the residual temperature of the nozzle to clean the consumables up on the nozzle with the help of tools, and do not touch the nozzle with your hands directly during cleaning to prevent scalding.
 6. When the machine is running, please stay away from the parts in operation, and avoid poking your fingers or other objects into the inside of the running printer to prevent injury.
 7. Adult supervision: ensure that children do not have access to the machine, so as not to cause personal accidents.
 8. Do regular product maintenance: regularly in the case of power failure, use dry cloth to clean the printer body, wipe dust and bonded printing materials, please lubricate and maintain the guide rail regularly.
 9. In case of emergency, please turn off the power directly.

ABOUT YOUR PRINTER



FUNCTION DEFINITION

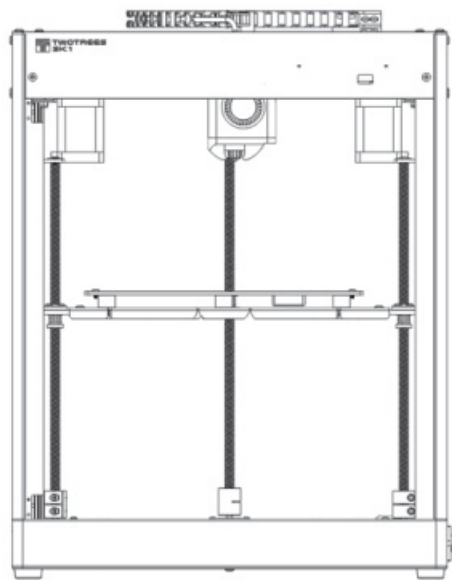


Serial number	Interface	Function definition
1	Internet Interface	Ethernet port for network cable connection
2	USB3.0 Interface	Connect USB flash drive Connect wireless card Connect PC
3	USB2.0 Interface	Connect USB flash drive Connect wireless card Connect PC
4	Screen Interface	Used to expand other screen sizes, RJ11 type interface
5	Power Interface	Connect AC power supply

MACHINE PARAMETERS

Model :SK1	Motion structure :Core XY
Color: Black	Printing mode: USB / LAN /Wifi-2.4G HZ
Nozzle Number :1	Display screen: 4.3-inch IPS capacitive touch color screen (480'272)
Print size :254x254x254mm	Firmware type :Klipper Open source
Printing accuracy :i-0.1mm	Filament :PLA \ PETG \ ABS \ ASA \ TPU \ PC \ UltraPA
XY axis accuracy :0.0025mm	Nozzle diameter: 0.4mm
Z-axis accuracy :0.0025mm	Filament diameter:1.75mm
Maximum speed :700mm/s	Slicing software :Ultima ker Cura, Prusaslicer, Lycheeslicer, Simplify3D, etc
Maximum acceleration :20000mm/s	Print file format: G-code
Software language: Chinese \ English \ Spanish \ German \ French \ Russian \	Supported system :MacOS\Windows\Linux
Nozzle temperature (Max.) : 300 C	Hot bed temperature (Max.) :100 C
Power parameters: 230V/110V 350W	Working environment: Temperature: 5-40 C; Humidity: 20-60% RH
Best working environment :20 C -40 C	

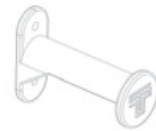
ACCESSORIES LIST



MachineX1



Accessory box X1



Filament rackX1



Screen holder X1



Half round head screw
M3*6X2



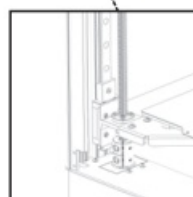
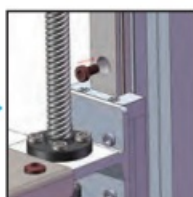
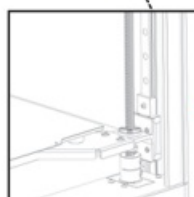
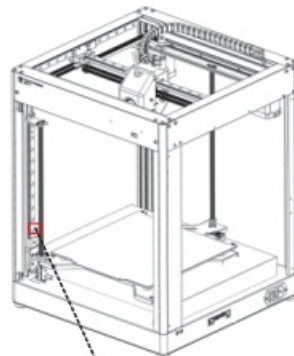
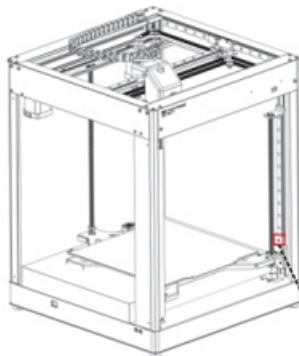
Half round head screw
M4*8X2



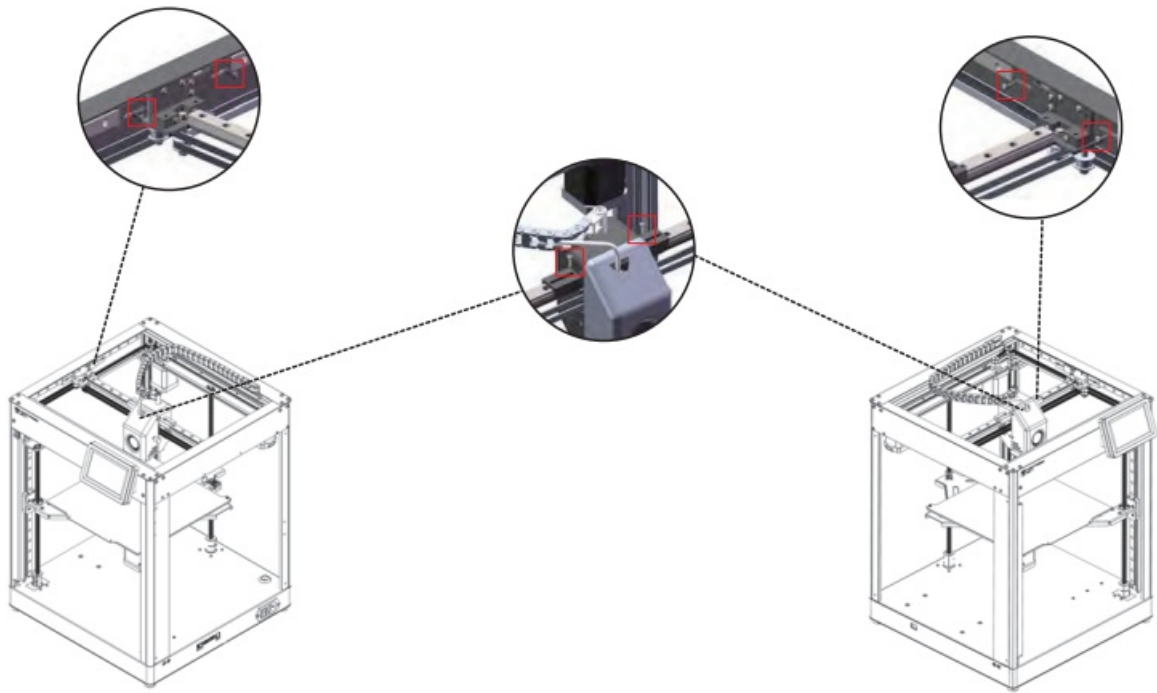
Screen X1

THE MACHINE ASSAEMBLE

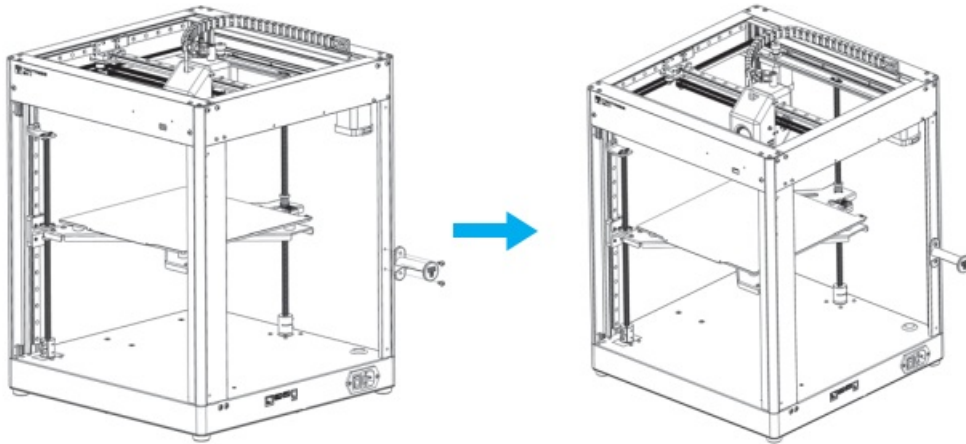
1. Remove the Z-axis fixation Cup head screws M3'6X2



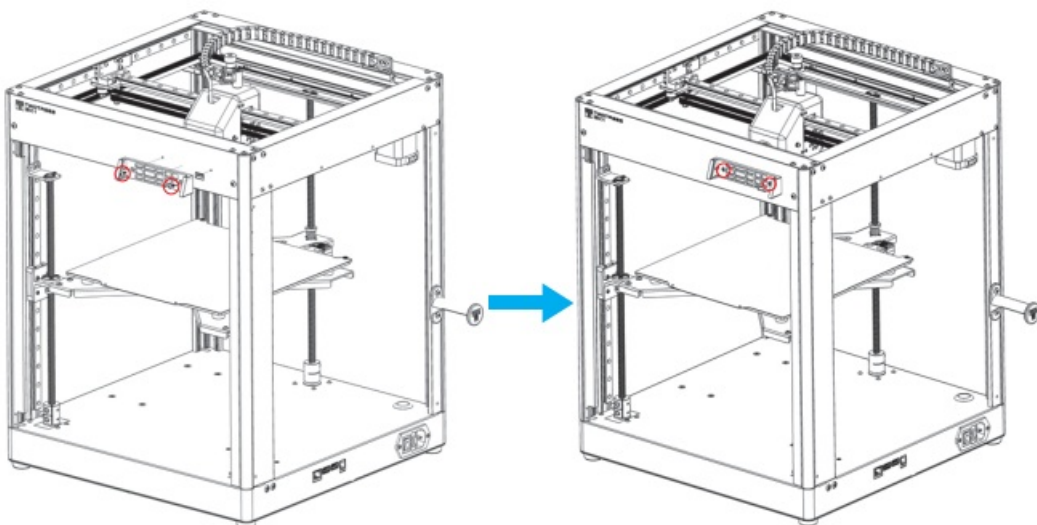
2. Remove the XY axis fixings



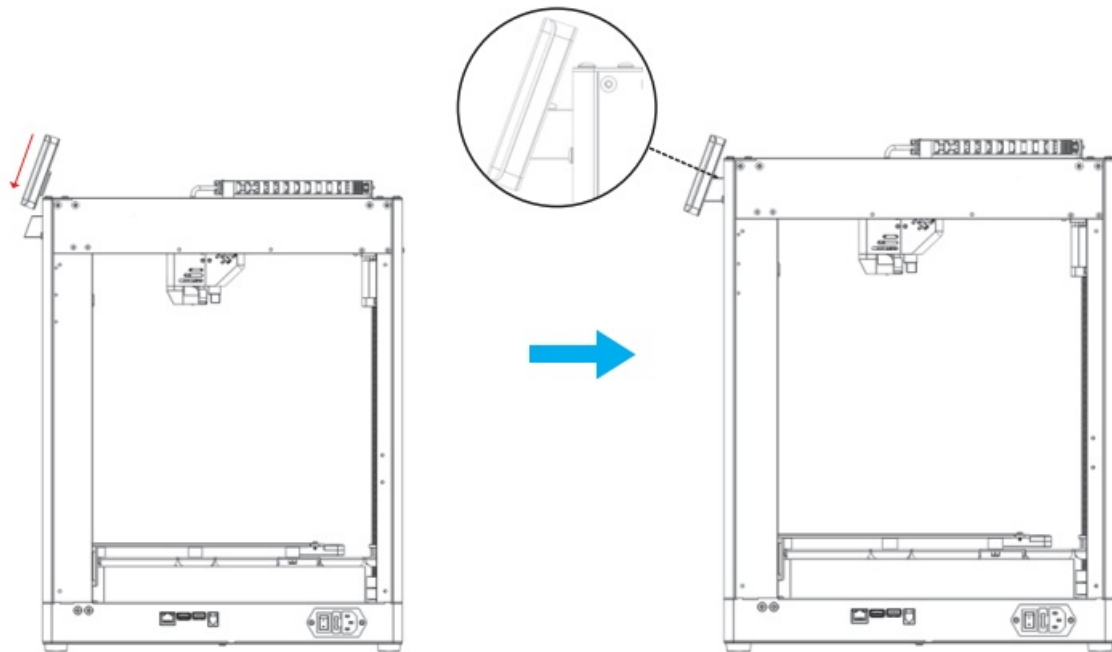
3. Install the filament rack Half round head screw M4'8X2 Filament rack X1



4. Install the 4.3-inch screen module
 - a. Install the Screen holder X1 Half-round head screws M3'6X2



- b. Before installation, insert the reserved screen cable into the terminal block, and then push the screen assembly along the chute into the corresponding slot of the bracket, then the installation is complete.

**FCC Warning:**

This equipment has been tested and found to comply with the limits for a Class B digital device, pursuant to part 15 of the FCC Rules. These limits are designed to provide reasonable protection against harmful interference in a residential installation. This equipment generates, uses and can radiate radio frequency energy and, if not installed and used in accordance with the instructions, may cause harmful interference to radio communications. However, there is no guarantee that interference will not occur in a particular installation. If this equipment does cause harmful interference to radio or television reception, which can be determined by turning the equipment off and on, the user is encouraged to try to correct the interference by one or more of the following measures:

- Reorient or relocate the receiving antenna.
- Increase the separation between the equipment and receiver.
- Connect the equipment into an outlet on a circuit different from that to which the receiver is connected.
- Consult the dealer or an experienced radio/TV technician for help.

Caution: Any changes or modifications to this device not explicitly approved by manufacturer could void your authority to operate this equipment.

This device complies with part 15 of the FCC Rules. Operation is subject to the following two conditions:

(1) This device may not cause harmful interference, and (2) this device must accept any interference received, including interference that may cause undesired operation.

This equipment complies with FCC radiation exposure limits set forth for an uncontrolled environment. This equipment should be installed and operated with minimum distance 20cm between the radiator and your body.



TEL: +0086-0755-23987110


Http: www.twotrees3d.com

E-mail: service@twotrees3d.com

Facebook: <https://www.facebook.com/twotrees3d>

Address: Room 402, Building 11, No.9 Qilin Road, Nankeng Community,
Bantian Street, Longgang District, Shenzhen, Guangdong, China, 518000

Documents / Resources

	TWO TREES SK1 FDM High Speed 3D Printer [pdf] Instruction Manual 2A7F8-SK1, 2A7F8SK1, SK1, SK1 FDM High Speed 3D Printer, FDM High Speed 3D Printer, High Speed 3D Printer, Speed 3D Printer, 3D Printer, Printer
---	--

References

-  [Twotrees | Consumer Desktop 3D Printer & Laser Cutter Manufacturer -](#)