



Two Notes Opus DI Amplifier and Cab Sim User Guide

[Home](#) » [Two Notes](#) » Two Notes Opus DI Amplifier and Cab Sim User Guide 



Contents

- [1 The Highlights](#)
- [2 Inputs & Outputs](#)
- [3 Connectivity For Any Scenario](#)
- [4 OPUS Controls](#)
- [5 Torpedo Remote](#)
- [6 Documents / Resources](#)
 - [6.1 References](#)
- [7 Related Posts](#)

The Highlights

Featuring Pre- & Power-amp Tube-Stage Modeling™ (TSM™), our class-leading DynIR™ Engine, MIDI integration and a future-proofed USB-C specification, OPUS has been engineered to empower you with apex-level tone in a go-anywhere footprint.

- TSM™ Pre- and Power-amp simulation
- On-board DynIR™ Engine for class-leading cabinet simulation
- Pro-grade suite of essential DSP-powered processors and FX
- Pre-loaded with the OPUS-Series DyniR Cabinet Collection featuring 32 primo captures
- On-demand access to 600+ DyniRs
- Wireless and USB integration with Torpedo Remote

OPUS, it's more than our masterpiece: it's a back-line in your gig-bag and a macrocosm of next-level tonal excellence.



<https://opus.two-notes.com/manual>

Download OPUS User Guide opus.two-notes.com/manual



<https://remote.two-notes.com>

Register OPUS via Torpedo Remote remote.two-notes.com

Warranty Information Two notes Support News and Products

opus.two-notes.com/warranty

support.two-notes.com

two-notes.com

Inputs & Outputs

1. Connect your Pedalboard, Guitar, Amp output or Line Level source here

WARNING

When using OPUS with an amplifier via the INST / LINE IN/FROM AMP input, ALWAYS ensure a suitable load box* or cabinet is connected to the TO SPEAKER output

2. Connect your load box* or cabinet here when plugging your amp into the INST / LINE IN /FROM AMP (1) Input
3. Configure OPUS' Input Level corresponding to the source connected to the INST/LINE IN/ FROM AMP (1) Input
4. Take command of all of OPUS' editable parameters viaa USB (or wineless) connection to Torpedo Remote
5. Power Input – 12V DC (Power Supply Included)

A Memory card reader for static IR loading and storage

B MIDI Input

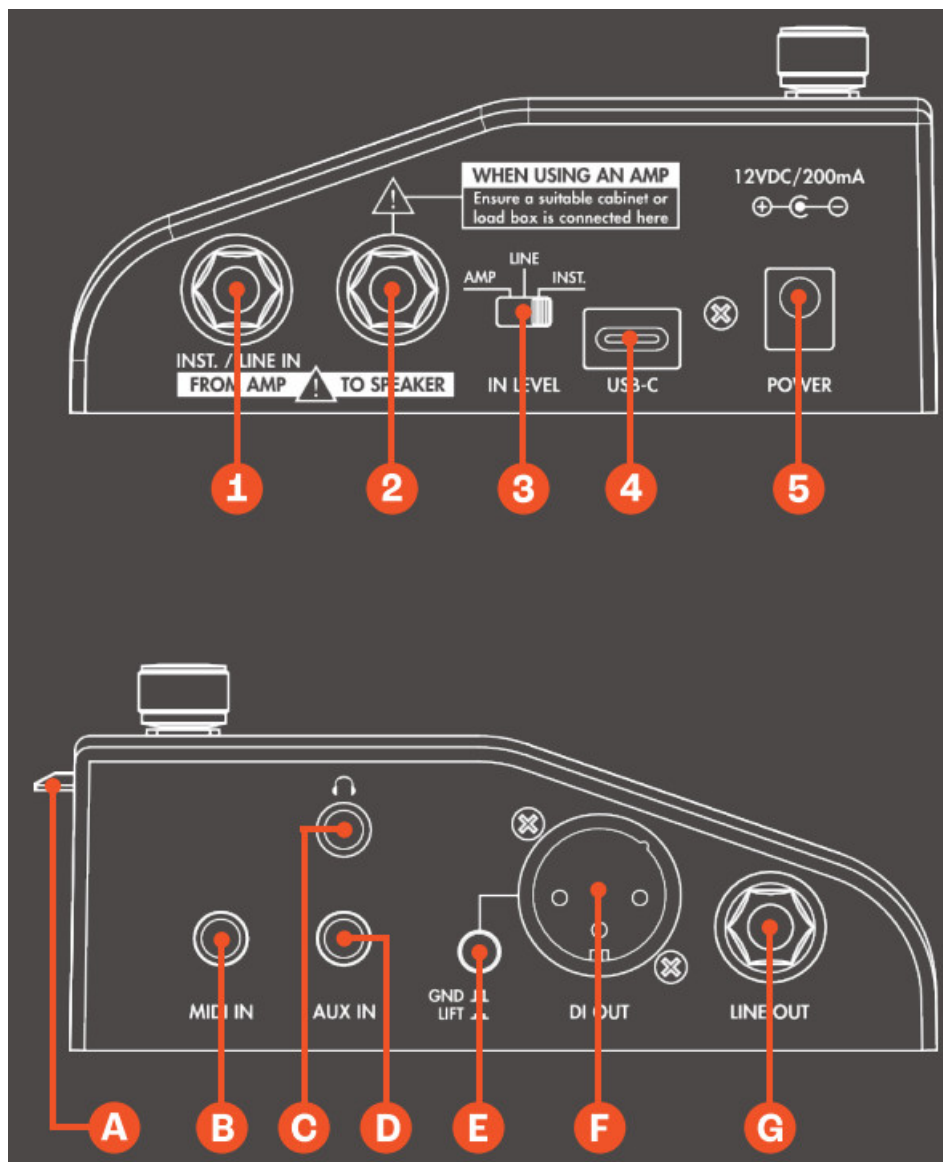
C Headphone Output

D Yeinch stereo Aux Input

E Ground Lift switch

F Balanced XLR output

G Balanced Jack output (TRS)



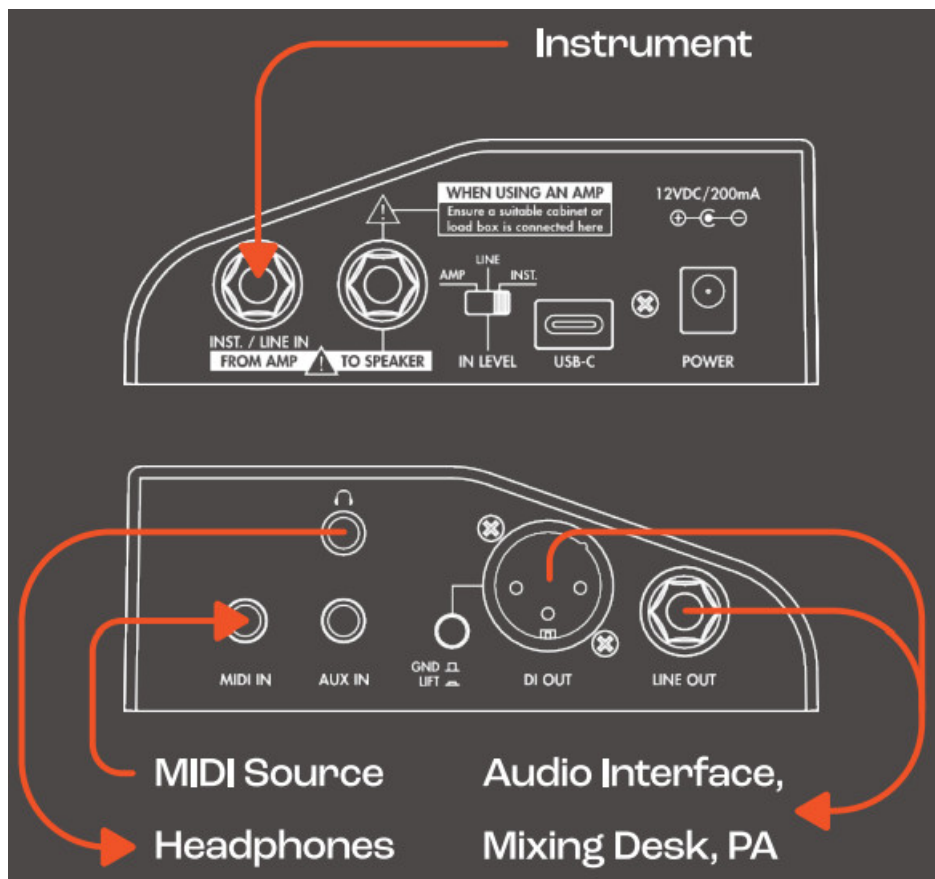
*Replace your cabinet with a load box and play your tube amp silently through OPUS. For optimal performance, we recommend a reactive load box such as the Torpedo Gator. Learn more at captortwo-notes.com

* Learn more about MIDI settings at opus.two-notes.com/midi

Connectivity For Any Scenario

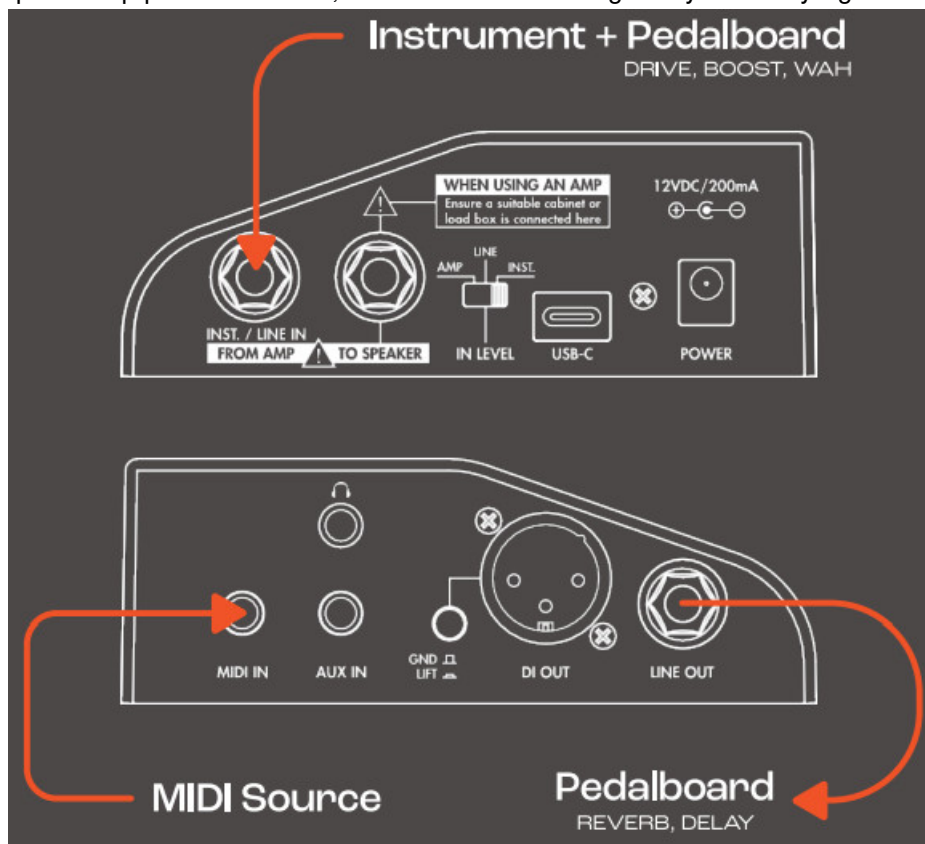
OPUS, Standalone

Use OPUS as a standalone tone-shaping solution, harnessing the power of the built-in TSM™ Pre- & Power-amp emulation, DynIR™ Engine, Post FX and MIDI control.



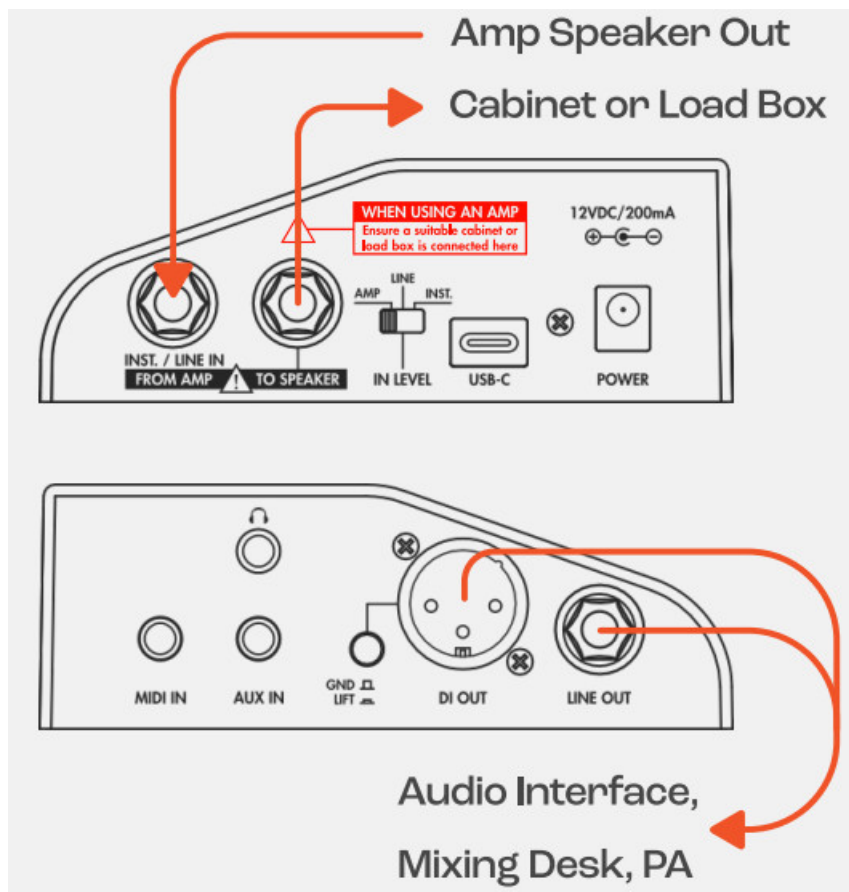
Level-Up Your Board!

Pedal fanatics, make OPUS the beating heart of your rig, Its stellar front- and rear-loading capability, in tandem with your pre- and post- amp pedal collection, delivers the ultimate 'go- anywhere' fly-rig.



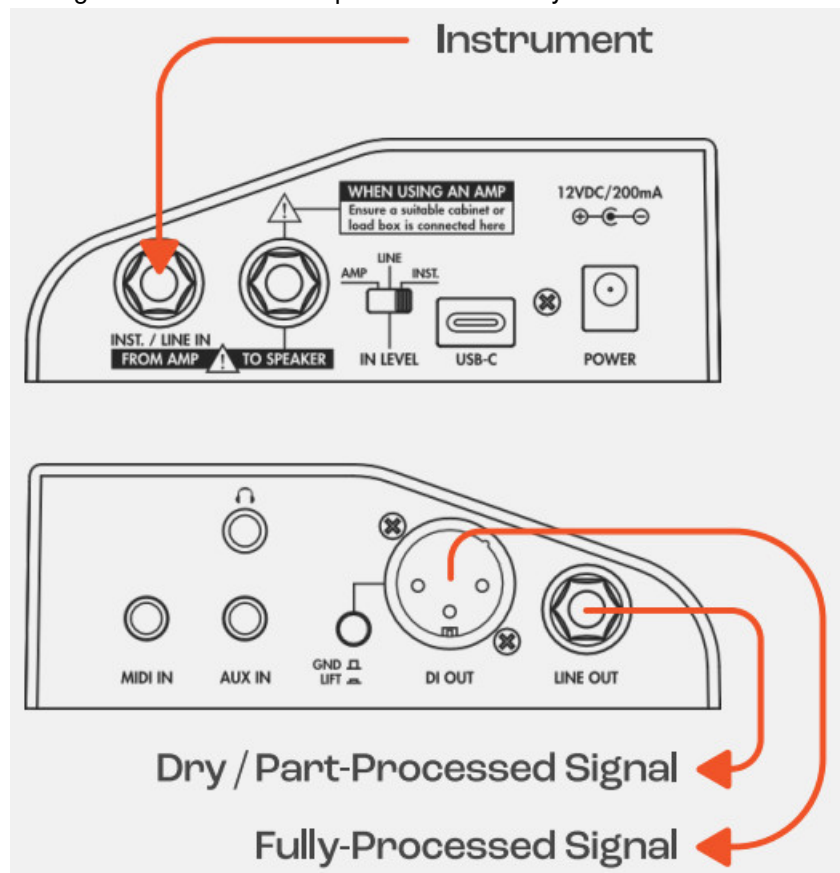
DI Your Amp

Place OPUS between your amp & speaker rig, engage Two notes' propriety DyniR™ cabinet technology and deliver flawless tone to a DAW or FOH.



Dual Mono Routing

Send a fully-processed signal to FOH and a TSM™ Preamp signal to your amp's FX return, or record a dry DI and DSP processed signal using the LINE and DI outputs simultaneously.



! WARNING

When configuring OPUS with an amplifier via the INST / LINE IN / FROM AMP input, ALWAYS ensure a suitable load box or cabinet is connected to the TO SPEAKER output.

OPUS Controls

The dual rotary encoders on OPUS are continuous and both include push functionality. OPUS features primary modes that dictate the behaviour of the rotary encoders – PERFORM Mode and MENU Mode.


At startup, OPUS defaults to PERFORM Mode.

In PERFORM Mode

- The LEFT encoder lets you scroll through presets while the RIGHT encoder sets OPUS' output volume
- A short press of any encoder switches the unit into MENU Mode
- A long press on the LEFT encoder provides access to Preset naming and save options
- A long press on the RIGHT encoder activates OPUS' built-in Tuner

In MENU Mode

- The LEFT encoder can be used to navigate through OPUS' menu parameters while the RIGHT encoder lets you edit the selected parameter value
- A short press on the LEFT encoder lets you exit MENU Mode and switch back to PERFORM Mode
- A short press on the RIGHT encoder provides access to any sub-menus tied to the Main Menu options

Please note, GLOBAL  parameters are not tied to a specific Preset and are saved directly upon instantiation; these are subsequently effective across all OPUS Presets.



Parameters outside of the GLOBAL  parameter menu are saved at a Preset Level.

Torpedo Remote

For ease-of-use, Torpedo Remote (iOS/Android/MacOS/Windows) serves as the nexus of your tone shaping experience; simply hookup to your Phone, Tablet or Desktop and experience liberated 1:1 integration with every editable parameter in the OPUS architecture. Get the download link on Page 2.



Documents / Resources

 	<p>Two Notes Opus DI Amplifier and Cab Sim [pdf] User Guide</p> <p>Opus DI Amplifier and Cab Sim, Opus, DI Amplifier and Cab Sim, Amplifier and Cab Sim, Cab Sim, Sim</p>
--	---

References

- [User Manual](#)

Manuals+.