

2015-2024 Twist Dynamics 3 Piece Gen 2 Floor Mat Kit Instruction Manual

[Home](#) » [Twist Dynamics](#) » 2015-2024 Twist Dynamics 3 Piece Gen 2 Floor Mat Kit Instruction Manual 

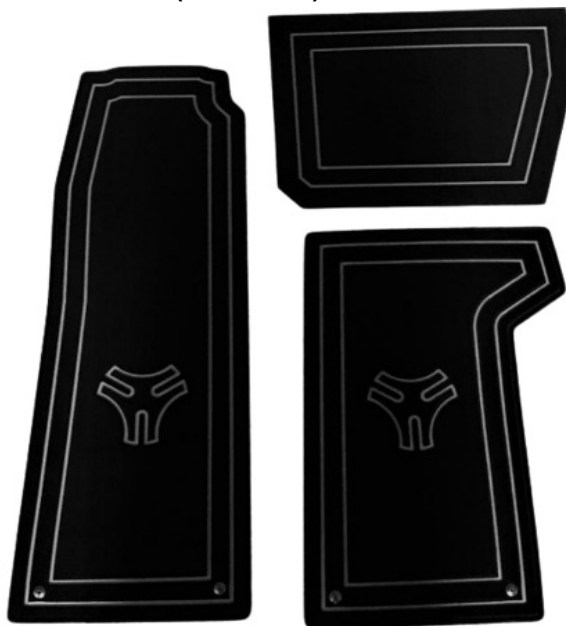


Contents

- [1 2015-2024 Twist Dynamics 3 Piece Gen 2 Floor Mat Kit](#)
- [2 Documents / Resources](#)
 - [2.1 References](#)

2015-2024 Twist Dynamics 3 Piece Gen 2 Floor Mat Kit

Twist Dynamics 3-Piece Gen 2 Floor Mat Kit (2015-2024) Installation Instructions



Tools Required

All you will need is a rag, an Awl or similar device to mark drill points, a Phillips head screwdriver, and some sort of surface cleaner (such as isopropyl alcohol, primer, or water).

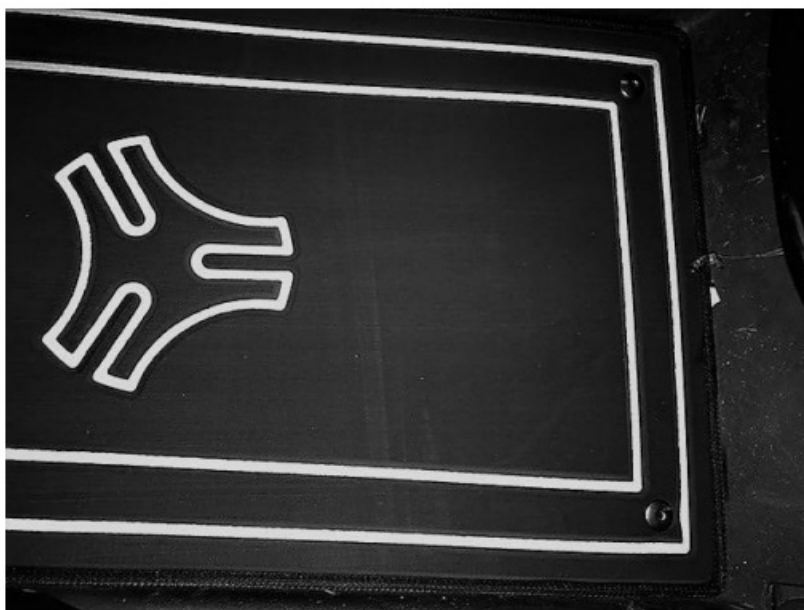
STEP 1.

Start with the driver's side. Adjust the seat all the way backwards to the rearmost position. Lay the mat down and position as needed. Please note that this mat kit is specifically designed to fit within the recessed portion of the floorboard and WILL NOT fully cover all square footage of driver and passenger floor.

***2017+ Slingshot Owners** In order to properly install both the driver and passenger mats in your vehicles, you will first need to loosen each of the three T40 bolts located on each side of the bike's interior framework that holds the front speaker pods in place. This must be done in order to create space under the pods so that you can subsequently slide the mats underneath. Once the mat is in place, re-tighten all bolts.

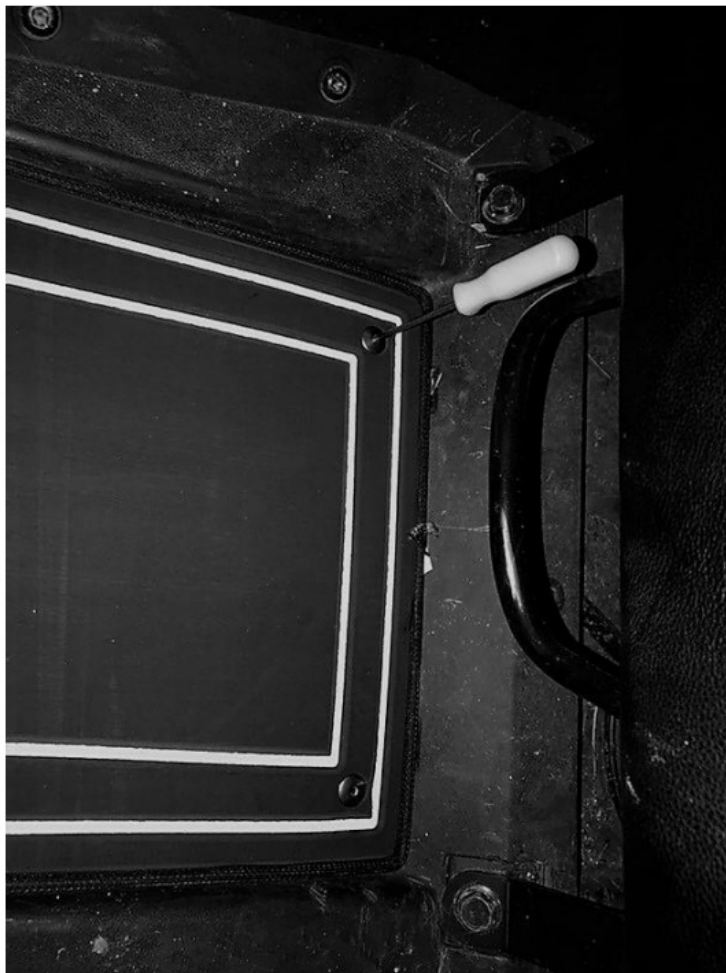
****DO NOT REMOVE T40 BOLTS ENTIRELY WHEN PERFORMING THE ABOVE-REFERENCED TASK.**

Removing the bolts entirely will make it extremely difficult to reinsert the bolts properly once the mats are in position under the pods. Instead, be sure to only loosen bolts as needed to complete installation properly.



STEP 2.

Use the Awl/Scribe or any thin, sharp object to mark hole locations for screw-in snaps.

**STEP 3.**

Screw in supplied snaps with Phillips screwdriver at scribed location marks. DO NOT overtighten snaps when installing, as you run the risk of stripping the hole and rendering the snap useless. Instead, screw the snap down until it rests flat against the floorboard and immediately stop applying pressure at that point.

STEP 4.

Passenger's side Check alignment and Placement of forward (Firewall), adhesive-based mat. Then, using rag, clean Firewall mat placement area with denatured alcohol (isopropyl). Peel protective plastic from adhesive backing of mat and firmly press into location.

*For extra adhesion between mat and surface, try using some type of primer to prep surface prior to application of mat!

**STEP 5.**

Install passenger floorboard mat using same technique utilized during driver's side install. See steps 1 through 3 for reference. *2017+ Slingshot Owners Don't forget to loosen T40 bolts on passenger side speaker pod as well to achieve desired fit. Refer to step 1 for reference.

STEP 6.

You're all finished! Now get out there and enjoy your next ride!

Red mats are known to fade over time if constantly exposed to sunlight. No warranty will be offered against fading for red mat options **Floor mat kits are marine-grade quality, weather-proof mats that can be vacuumed and washed with mild soap. Patent Pending. For a more in-depth description of the product/material please visit our website or contact us.**


If you have any questions, comments, or concerns about this product, please contact Twist Dynamics directly at: (941) 323 5912 or email: sales@twistdynamics.com and we will be happy to help.



www.twistdynamics.com

1468 Northgate Blvd., Sarasota, FL 34234

941 323 5912

 <p>Twist Dynamics 3 Piece Gen 2 Floor Mat Kit (2015-2024) Installation Instructions</p>	<p>TWIST DYNAMICS 2015-2024 Twist Dynamics 3 Piece Gen 2 Floor Mat Kit [pdf] Instruction Manual</p> <p>2015-2024 Twist Dynamics 3 Piece Gen 2 Floor Mat Kit, 2015-2024, Twist Dynamics 3 Piece Gen 2 Floor Mat Kit, Gen 2 Floor Mat Kit, Floor Mat Kit, Mat Kit</p>
---	--

References

- [🌐 Twist Dynamics](#)
- [🌐 Twist Dynamics](#)
- [User Manual](#)

[Manuals+](#), [Privacy Policy](#)

This website is an independent publication and is neither affiliated with nor endorsed by any of the trademark owners. The "Bluetooth®" word mark and logos are registered trademarks owned by Bluetooth SIG, Inc. The "Wi-Fi®" word mark and logos are registered trademarks owned by the Wi-Fi Alliance. Any use of these marks on this website does not imply any affiliation with or endorsement.