



twelve south Curve Flex Stand User Guide

[Home](#) » [twelve south](#) » twelve south Curve Flex Stand User Guide

Contents [[hide](#)]

- [1 twelve south Curve Flex Stand](#)
- [2 Product Information](#)
- [3 Product Usage Instructions](#)
- [4 What's in the Box](#)
- [5 Documents / Resources](#)
 - [5.1 References](#)
- [6 Related Posts](#)



twelve south Curve Flex Stand

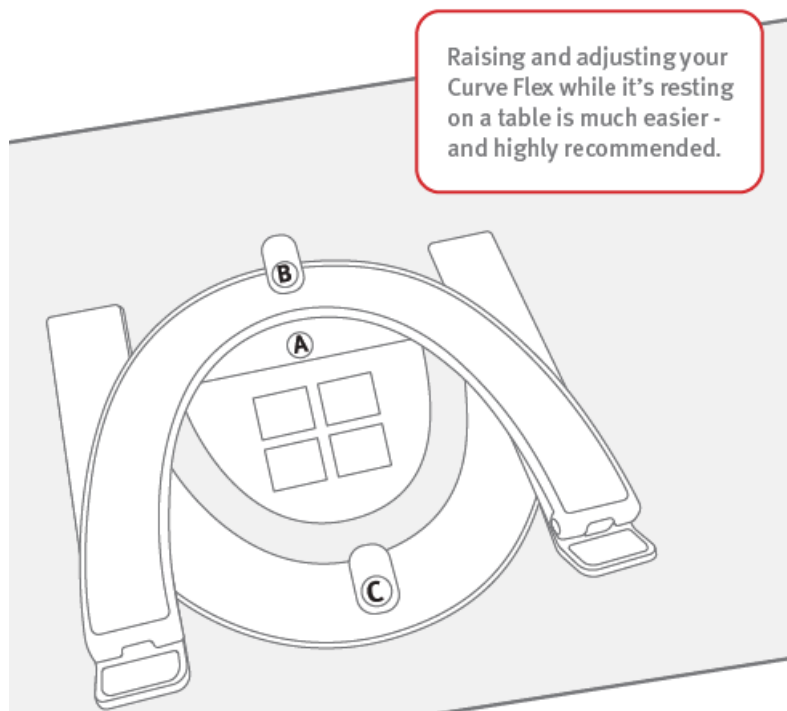


Product Information

The Curve Flex is a laptop stand that allows you to adjust the height and angle of your MacBook while working. It comes with a removable Getting Started guide, an owner's guide, a Travel Sleeve with a hidden Adjustment Tool storage pocket inside, and an Adjustment Tool (mm Hex Wrench) located in the Travel Sleeve pocket. The front hinges of Curve Flex should not be overextended more than 35 degrees. The back hinges can be opened to their max angle of 35 degrees when using Curve Flex.

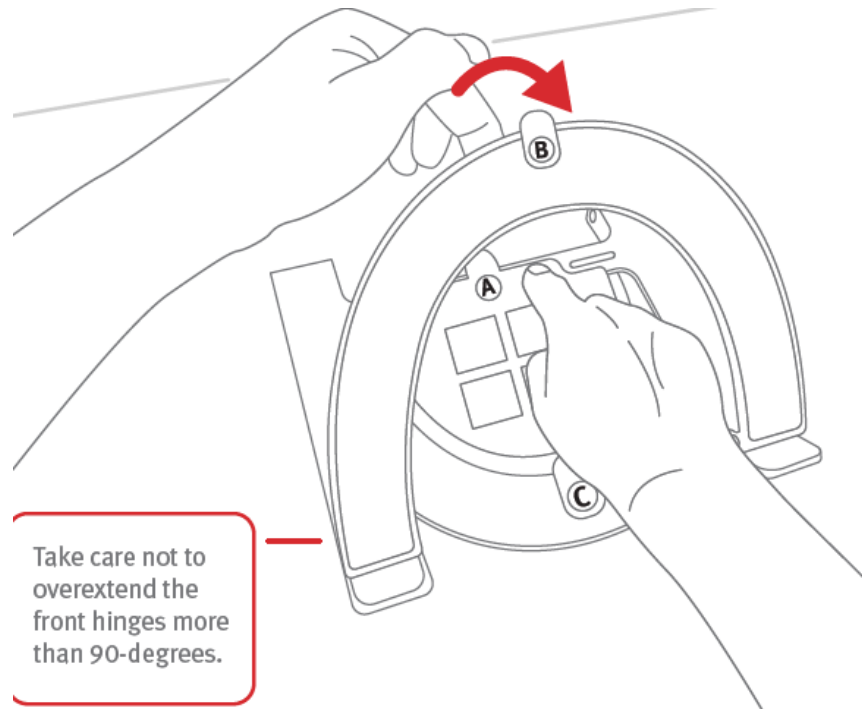
Product Usage Instructions

1. Place Curve Flex on a desk or table. It is recommended to raise and adjust your Curve Flex while it's resting on a table.

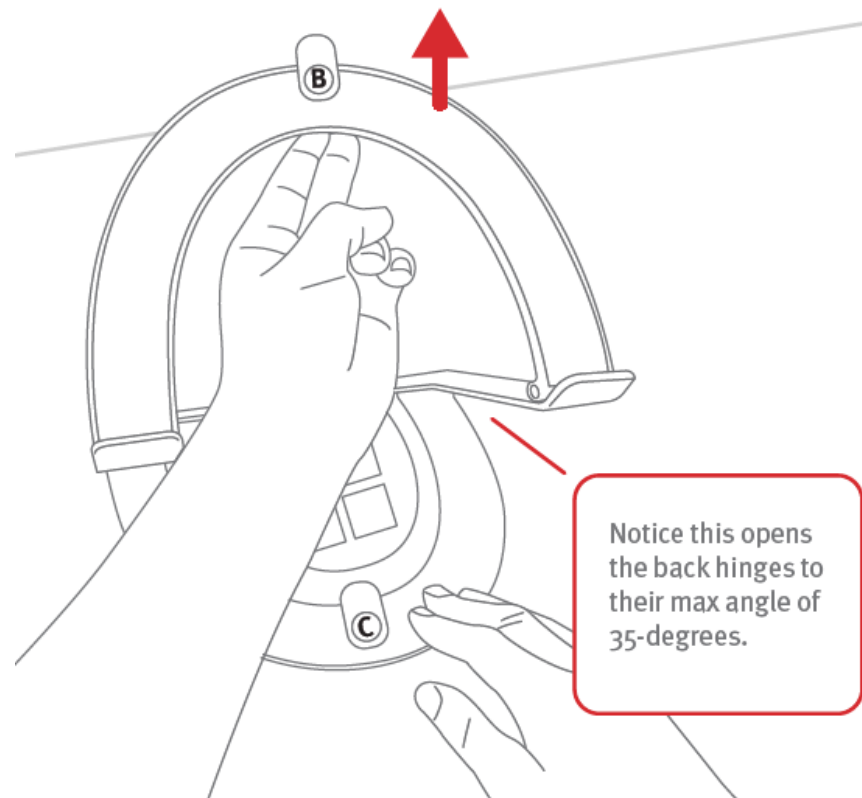


2. To raise Curve Flex, hold down the front hinges while gently lifting it to its maximum height. Take care not to

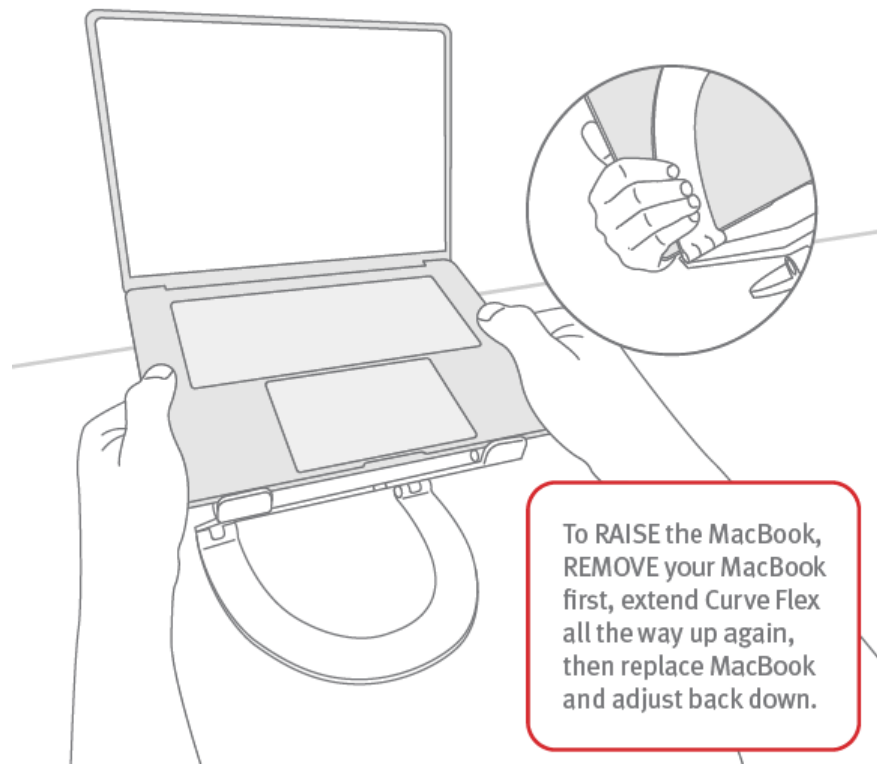
overextend the front hinges more than 35 degrees.



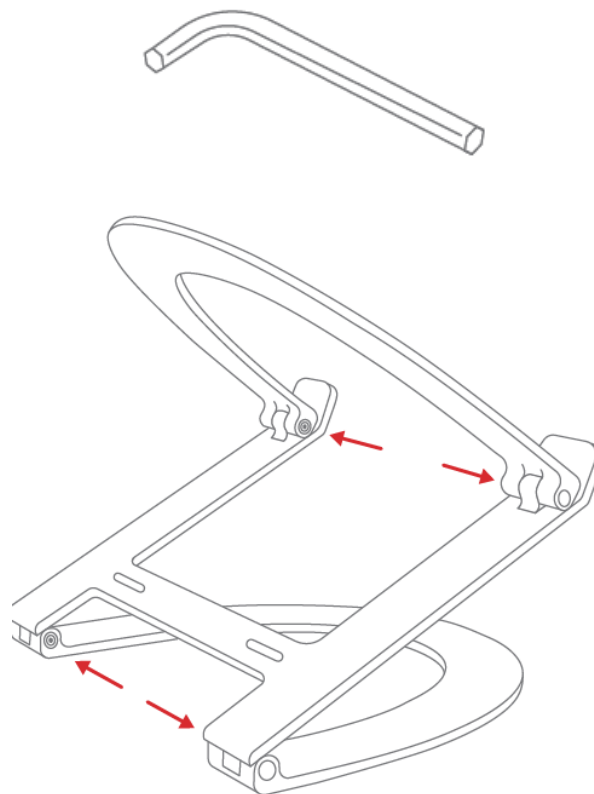
3. Hold down the back hinges while carefully lifting Curve Flex until you feel it stop.



4. Open your MacBook first, then place it on Curve Flex.
5. To adjust the height and angle, hold your MacBook and Curve Flex together, then gently press down.



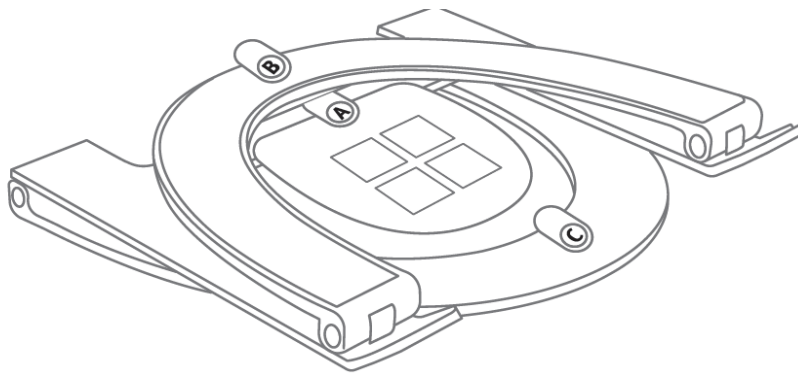
6. To adjust the tension of Curve Flex, use the included Adjustment Tool stored in the Travel Sleeve. Tighten (clockwise) or loosen (counter-clockwise) the four hinges on Curve Flex as needed.



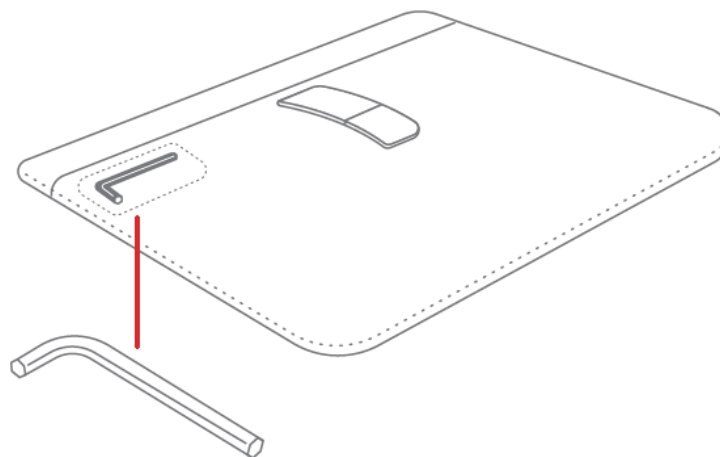
7. To raise your MacBook, remove it first, extend Curve Flex all the way up again, then replace your MacBook and adjust back down.

What's in the Box

1. Curve Flex
(with removable Getting Started guide)



2. Travel Sleeve
(with hidden Adjustment Tool storage pocket inside)
3. Adjustment Tool
(6 mm Hex Wrench located in Travel Sleeve pocket)



Have questions? Visit twelvesouth.com or contact support@twelvesouth.com ©2022 Twelve South, LLC. All rights reserved.

Documents / Resources

<p>Curve Flex owner's guide</p>	<p>twelve south Curve Flex Stand [pdf] User Guide Curve Flex Stand, Flex Stand, Stand</p>
--	---

References

- [Twelve South](#)