



TVT TD-E2228-IC-TP Face Recognition Terminal User Guide

[Home](#) » [TVT](#) » TVT TD-E2228-IC-TP Face Recognition Terminal User Guide 

Contents

- [1 TVT TD-E2228-IC-TP Face Recognition Terminal](#)
- [2 Package](#)
- [3 Overview](#)
- [4 Cable Connection](#)
- [5 Installation](#)
- [6 Login](#)
- [7 Network Configuration](#)
- [8 Face Configuration](#)
- [9 Web Client Access](#)
- [10 FCC Warning](#)
- [11 Documents / Resources](#)
- [12 Related Posts](#)



TVT TD-E2228-IC-TP Face Recognition Terminal



About This Manual

- All pictures, images, icons and snapshots in this manual are for reference only. If there is inconsistency between the manual and the actual product, the actual product shall prevail.
- The manual will be updated according to the product improvement and are subject to change without prior written notice.

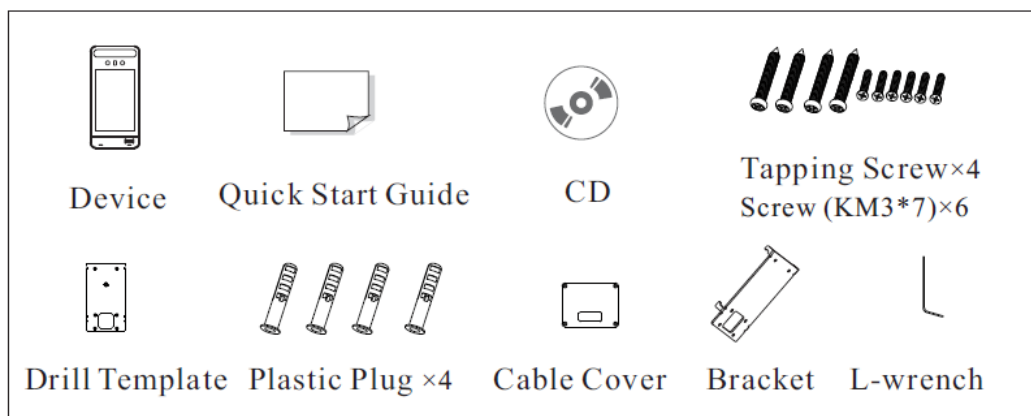
Legal Disclaimer

- To the maximum extent permitted by applicable law, the product described, with its hardware, software, software and firmware, is provided “as is”, with all faults and errors, and our company makes no warranties, express or implied, including particular purpose, and non-infringement of third party. In no event will our company, offices, or agents be liable to you for any special, consequential, incidental, or indirect damages, including, among others, damages for loss of business profits, business interruption, or loss of data or documentation, in connection with the use of this product, even if our company has been advised of the possibility of such damages.
- With regard to the product with internet access, the use of product shall be wholly at your own risks. Our company shall be irresponsible for abnormal operation, privacy leakage or other damages resulting from cyber attack, hacker attack, virus inspection, or other internet security risks; however, our company will provide timely technical support if necessary.
- During the use of the device, please strictly abide by applicable law. In the event of any conflicts between this manual and the applicable law, the later prevails.

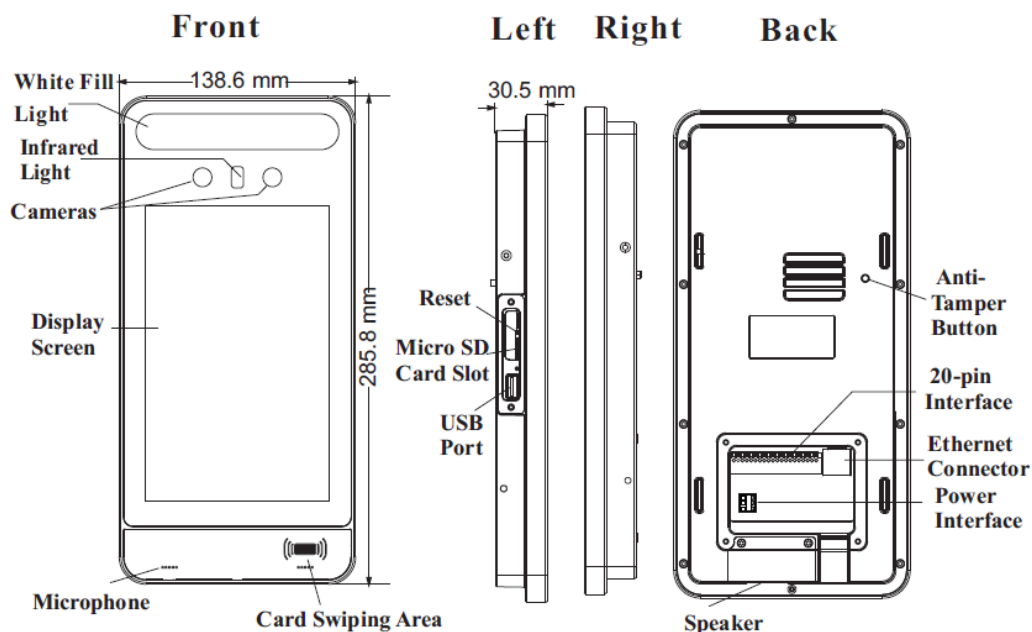
Installation and Use

- Please use our product according to the following safety instructions and warnings.
- Do not place the camera in extremely hot, cold, dusty or damp location.
- Do not expose it to high electromagnetic radiation.
- If the product does not work properly, please contact your dealer or the nearest service center.
- Never attempt to disassemble the camera yourself. (We shall not be responsible for any problems caused by unauthorized repair or maintenance.)
- Do not drop the camera or subject it to physical shock.
- Keep away from liquid while in use.
- Do not touch the screen with sharp objects.
- If cleaning is necessary, please use clean cloth to wipe it gently, avoiding water or alcohol.

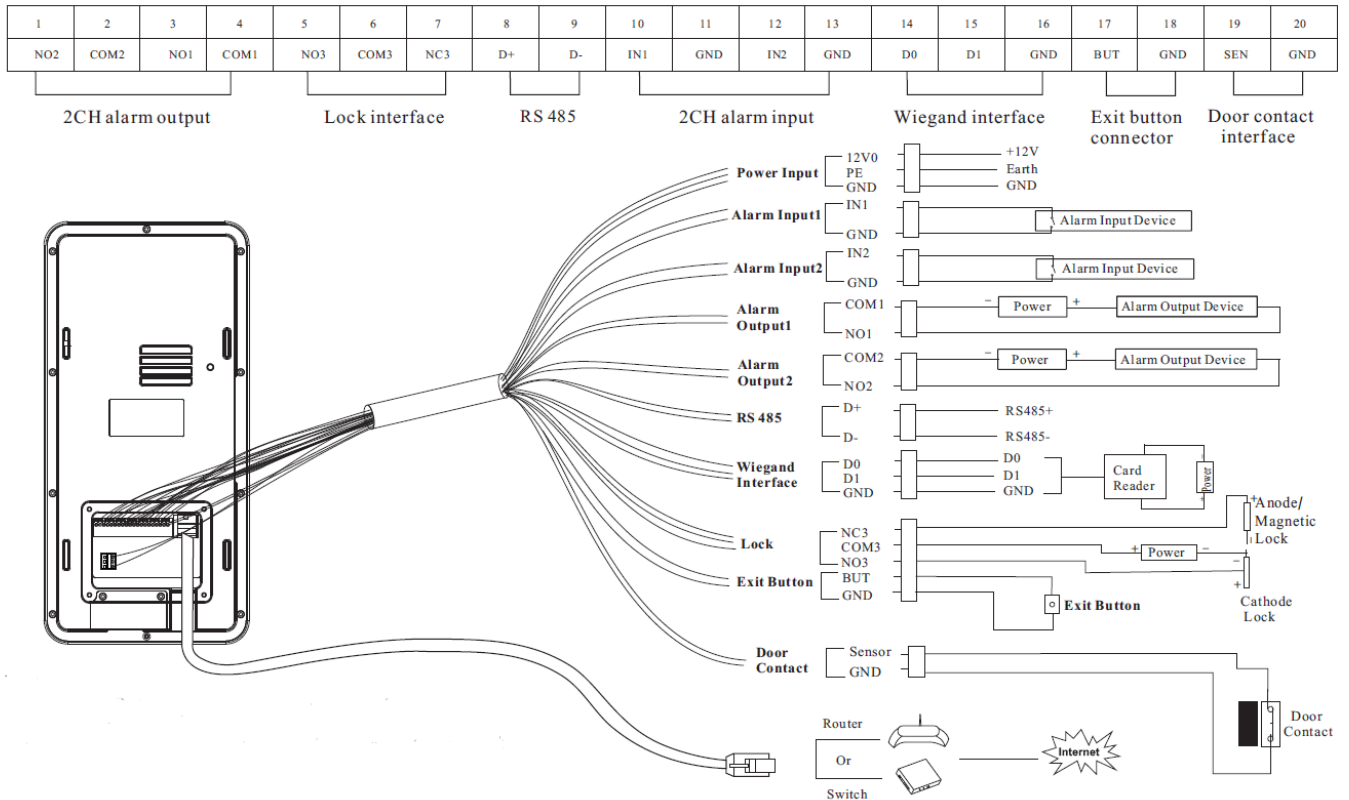
Package



Overview



Cable Connection



Note:

- The wiegand terminal here is a wiegand input terminal. If you want to connect to an access controller, you shall set the Wiegand direction to "Output".
- A card reader can be connected to this device via RS 485 interface independently.

Installation

Ambient Illumination Requirement

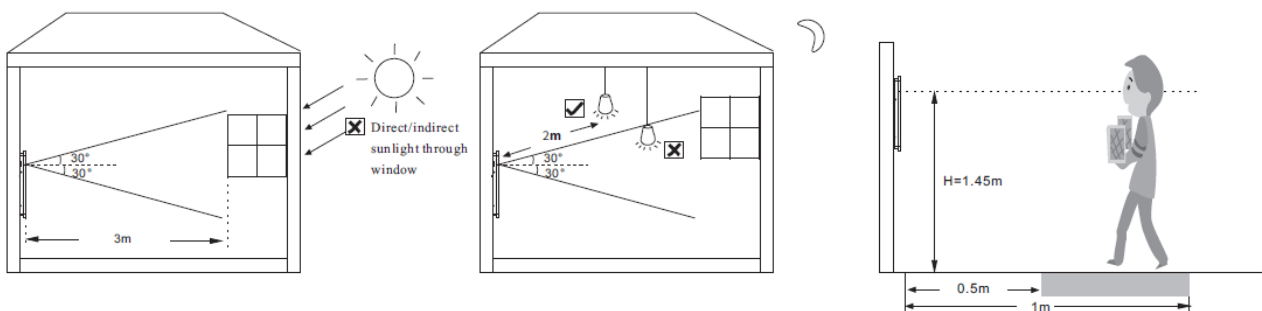
Make sure faces can be captured clearly.

Avoid direct sunlight and backlight .

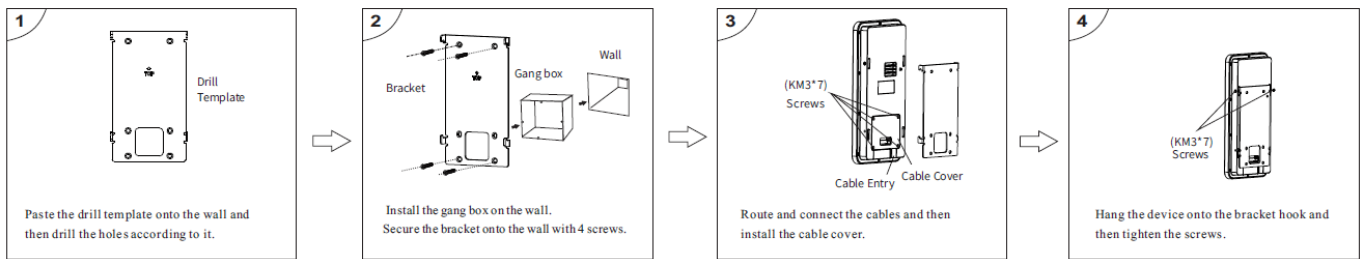
The device should be at least 2 meters away from the light, and at least 3 meters away from the window or door

Height Requirement

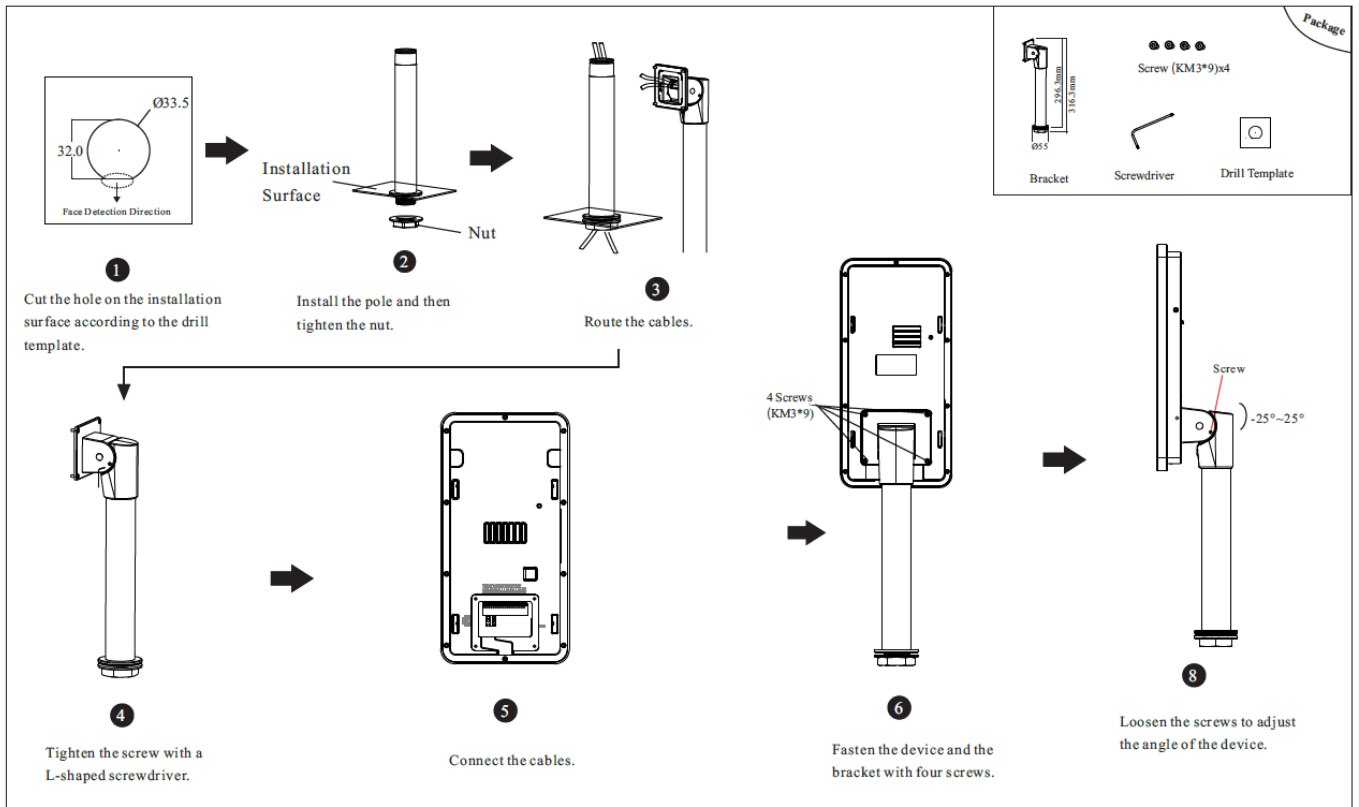
The recommended installation height (H) is 1.45m which can cover human height of 1.2m ~2.2m in the detection area. It can be adjusted according to the actual scene. The ideal recognition distance ranges from 0.5m to 1m.



Installation

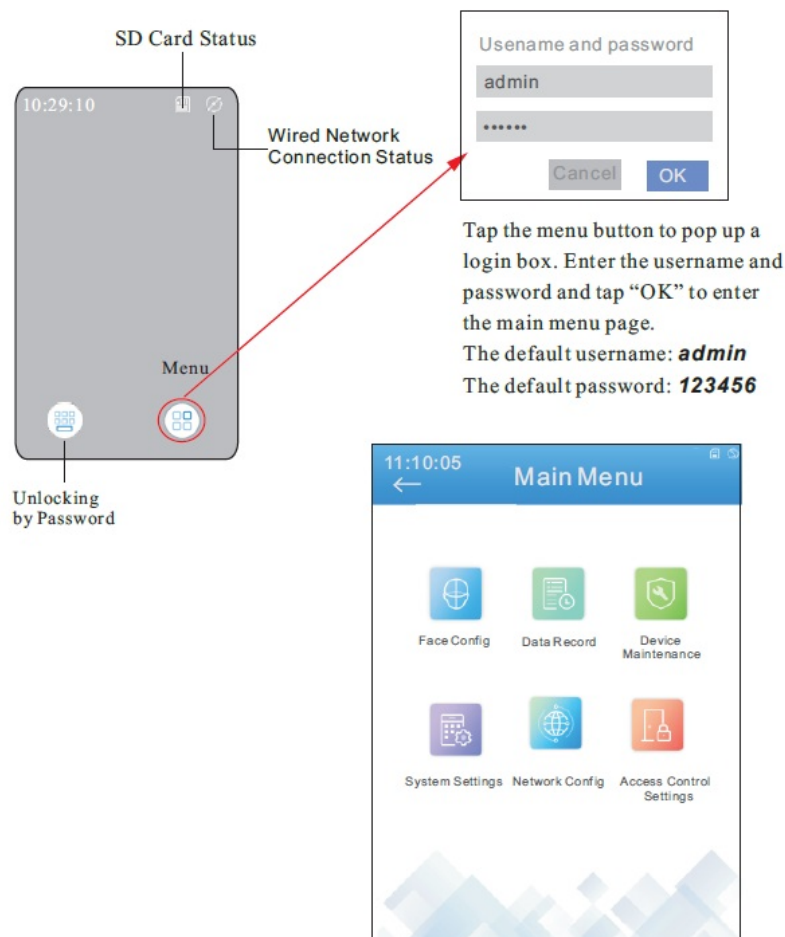


Pole Mounting



Login

After the device is powered on and connected to the LAN, you will see the following interface.




Network Configuration

In the main menu page, tap “Network Config” to go to the network configuration interface.

Local Network Configuration

Local Network Config	
IPv4	IPv6
Obtaining IP address automatically	<input checked="" type="radio"/>
Input IP address manually	<input type="radio"/>
IP address	192.168.1.88
Subnet mask	255.255.0.0
Gateway	192.168.1.1
First DNS server	192.168.1.1
Second DNS server	8 . 8 . 8 . 8

Please set IPv4 or IPv6 as needed. Here taking IPv4 network settings for example. You can enter IP address, subnet mask, gateway and DNS server manually or get these network parameters by selecting obtaining IP

address automatically. After that, tap  to save the settings. Note: If you want to obtain IP address automatically, you shall enable DHCP function in the router.

Sever Configuration

This function is mainly used for connecting client software.

Note: The auto report shall be enabled when you add this device in the client software.

Enter auto report port of the client software

Enter the IP address of the transfer server of the client software



Enter the device ID allocated in the client software


The screenshot shows the 'Sever Config' screen with a blue header bar containing a back arrow and a save icon. Below the header, there is an 'Enable' toggle switch. The main content area has three input fields: 'Sever port' (with a red box around it and a red line pointing to the text 'Enter auto report port of the client software'), 'Sever address' (with a red box around it and a red line pointing to the text 'Enter the IP address of the transfer server of the client software'), and 'Device ID' (with a red box around it and a red line pointing to the text 'Enter the device ID allocated in the client software'). The 'Sever port' field contains the value '2009'. The 'Sever address' field contains a placeholder IP address. The 'Device ID' field contains the value '1'. Below the input fields, there are three red curved arrows pointing to the fields with the following text: 'Click it to modify the server port' (pointing to the 'Sever port' field), 'Click it to enter the IP address' (pointing to the 'Sever address' field), and 'Click it to modify the device ID' (pointing to the 'Device ID' field).

Face Configuration

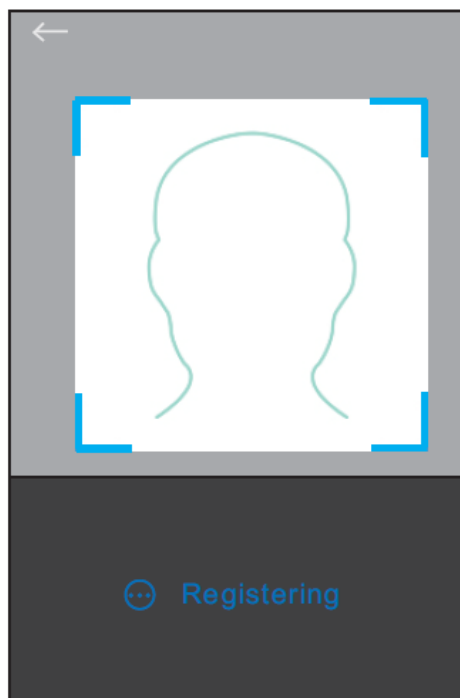
People Management

The screenshot shows the 'People Management' screen with a blue header bar containing a back arrow, the text 'People Management', a red circle around a '+' icon, and a filter icon. Below the header, there is a search bar with the placeholder text 'Search name or ID number' and a magnifying glass icon. Below the search bar, there is a table with the following columns: 'Name', 'ID No.', 'Group', and 'Verification'. The table has one row with the following data: 'XXX', '123', 'Allow List', and 'Face only>'. Below the table, there is a large empty white box.

1. Select "People Management" in the main menu page to go to the people management page.
2. Tap "+" to enter the "Add User" page
3. Set username, gender, group type, ID number, verification mode, etc.
4. Tap  to add a face picture. The detailed face adding requirements refer to the descriptions of Adding Face .
5. Tap  to save settings.

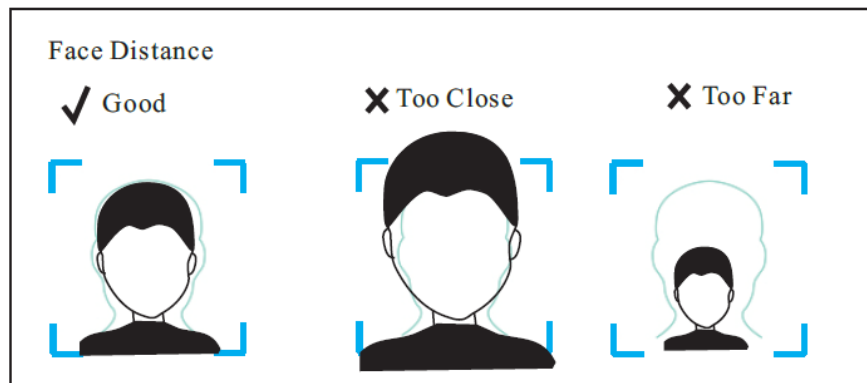
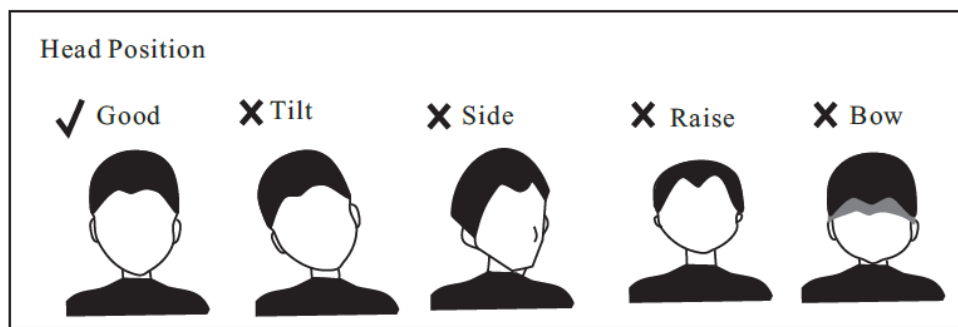
Add User	
ID no.	Pls input ID number
Name*	Pls input name
Gender*	Pls select the gender >
Age	Pls input age
Tel	Pls input tel
Remark	Pls input remark
Card no.	Pls input Card number
Password	Pls input password >
Group type*	Pls select group type >
Face*	
Verification*	Face only >

Adding Face



Face the camera and ensure your face picture in the middle of the face collecting window. Keep your expression naturally when collecting face pictures.

Do not wear hat, sunglasses, or other objects that can affect the face recognition function. Do not make your hair cover your eyes, ears, etc. The ideal recognition distance is from 0.5 to 1m; when collecting or comparing face picture, please ensure that the target is in a proper position.



Match Settings

In the face config page, tap “Match Settings” to go to the match settings page. Please set similarity threshold, deduplication period, snapshot interval, white light mode and so on as needed.

Deduplication period: In the pre-defined period, delete repeated comparison results. It is recommended to use the default match settings.

Group Settings

In the face config page, tap “Group Settings” to go to the group settings page. There are three groups– allow list, block list, visitor.

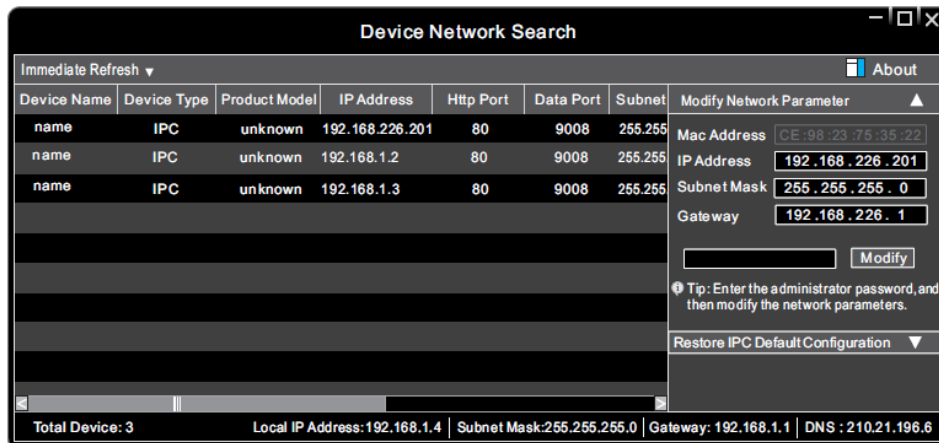
The group type of the added user can be changed here. Select a group and tap “ ” to enter this group. Tap the user you want to change his/her group and then a drop-down list will be displayed. Choose the group to change.

← Group Settings	
Block List	>
Visitor	>
Allow List	>

← Allow List			
Name	ID no.	Group	Verification
XXX	123	Allow List	Face only >
		<div><div>×</div><div>Visitor</div><div>Allow List</div><div>Block List</div></div>	

Web Client Access

1. Make sure that the device and the PC are well connected via LAN.
2. Find the IP-Tool from the CD and then install it in the computer. After that, run the IP-Tool as shown below



3. Modify the IP address. The default IP address of this terminal is 192.168.226.201. Click the information of the device listed in the above table to show the network information on the right hand. Modify the IP address and gateway of the camera and make sure its network address is in the same local network segment as that of the computer. Please modify the IP address of your device according to the practical situation. After modification, please enter the password of the administrator and click “Modify” button to modify the settings.

The default password of the administrator is “123456”.

4. Double-click the device listed in the IP-Tool or manually enter the IP address in the address bar of the web browser to connect the device.

Then follow directions to download and install the plugin.

5. Enter the username and password in the login interface.

The default username is admin; the default password is 123456

FCC Warning

This equipment has been tested and found to comply with the limits for a Class B digital device, pursuant to part 15 of the FCC Rules. These limits are designed to provide reasonable protection against harmful interference in a residential installation. This equipment generates, uses and can radiate radio frequency energy and, if not installed and used in accordance with the instructions, may cause harmful interference to radio communications. However, there is no guarantee that interference will not occur in a particular installation. If this equipment does cause harmful interference to radio or television reception, which can be determined by turning the equipment off and on, the user is encouraged to try to correct the interference by one or more of the following measures:

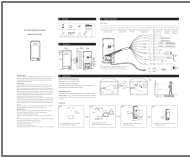
- Reorient or relocate the receiving antenna.
- Increase the separation between the equipment and receiver.
- Connect the equipment into an outlet on a circuit different from that to which the receiver is connected.
- Consult the dealer or an experienced radio/TV technician for help.

Caution: Any changes or modifications to this device not explicitly approved by manufacturer could void your authority to operate this equipment.

This device complies with part 15 of the FCC Rules. Operation is subject to the following two conditions:

(1) This device may not cause harmful interference, and (2) this device must accept any interference received, including interference that may cause undesired operation. This equipment complies with FCC radiation exposure limits set forth for an uncontrolled environment. This equipment should be installed and operated with minimum distance 20cm between the radiator and your body.

Documents / Resources

	<p>TVT TD-E2228-IC-TP Face Recognition Terminal [pdf] User Guide</p> <p>TD-E2228, TDE2228, 2ATOW-TD-E2228, 2ATOWTDE2228, TD-E2228-IC-TP Face Recognition Terminal, TD-E2228-IC-TP, Face Recognition Terminal, Recognition Terminal, Terminal</p>
---	--

[Manuals+](#).