

TUZTUALA TP-1 3 In 1 Function Video Remote And Remote Shutter And Phone Holder



TUZTUALA TP-1 3 In 1 Function Video Remote And Remote Shutter And Phone Holder User Manual

[Home](#) » [tuztuala](#) » TUZTUALA TP-1 3 In 1 Function Video Remote And Remote Shutter And Phone Holder User Manual 

Contents

- 1 [TUZTUALA TP-1 3 In 1 Function Video Remote And Remote Shutter And Phone Holder](#)
- 2 [About iPhone](#)
- 3 [PACKAGE](#)
- 4 [Use diagrams](#)
- 5 [PAIRING](#)
- 6 [Connect mobile phone](#)
- 7 [Mobile phone stand](#)
- 8 [Button function](#)
- 9 [Charging diagram](#)
- 10 [Automatic shutdown function](#)
- 11 [PARAMETER](#)
- 12 [Frequently Asked Question](#)
- 13 [Documents / Resources](#)
 - 13.1 [References](#)
- 14 [Related Posts](#)

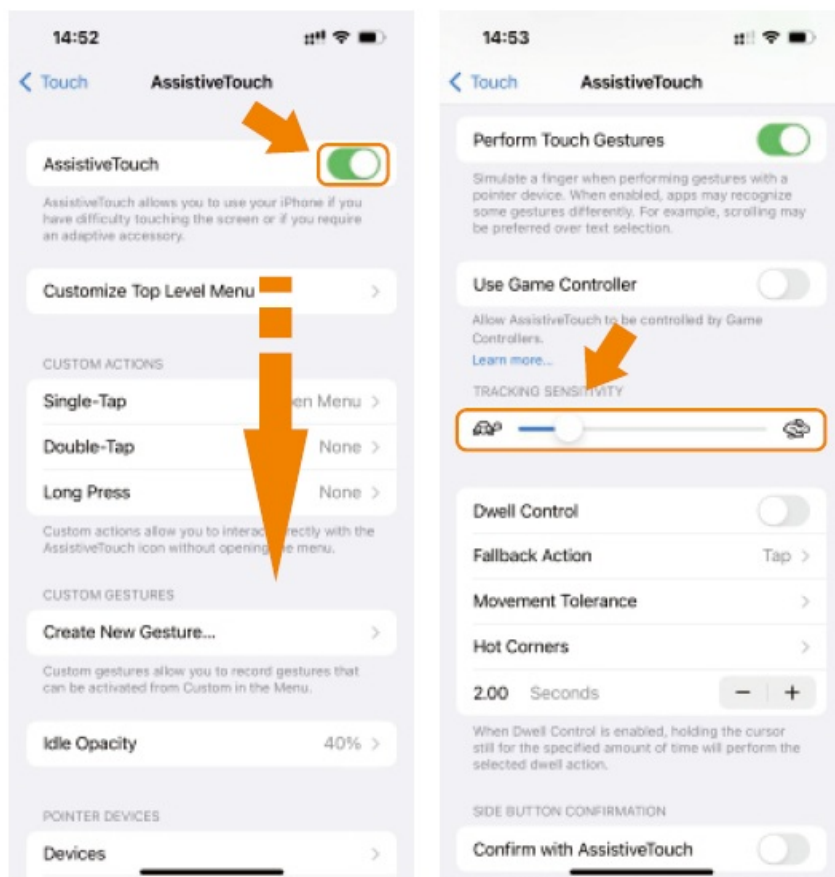
TUZTUALA

TUZTUALA TP-1 3 In 1 Function Video Remote And Remote Shutter And Phone Holder

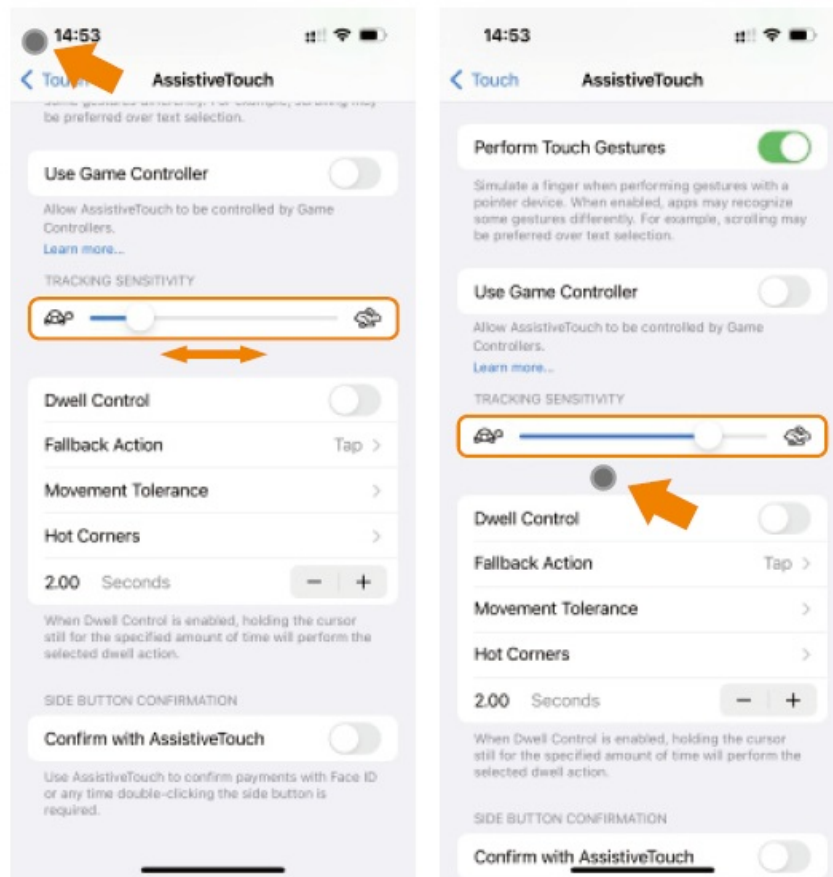


The iOS system cannot utilize the user manual

When the up or down buttons on the remote control for the iOS system are not functioning, please follow the steps below for troubleshooting.



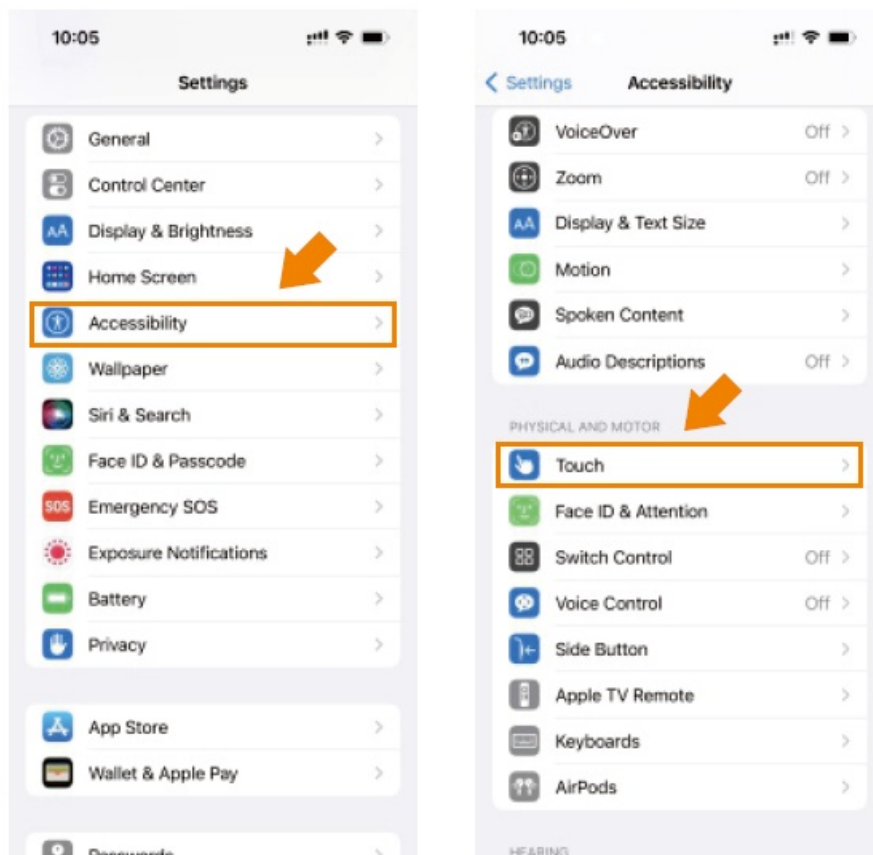
Adjust the slider to position the screen cursor closer to the center of the screen. Note: If the cursor is positioned in the top left corner or bottom right corner of the screen, it can cause the remote control function to malfunction.



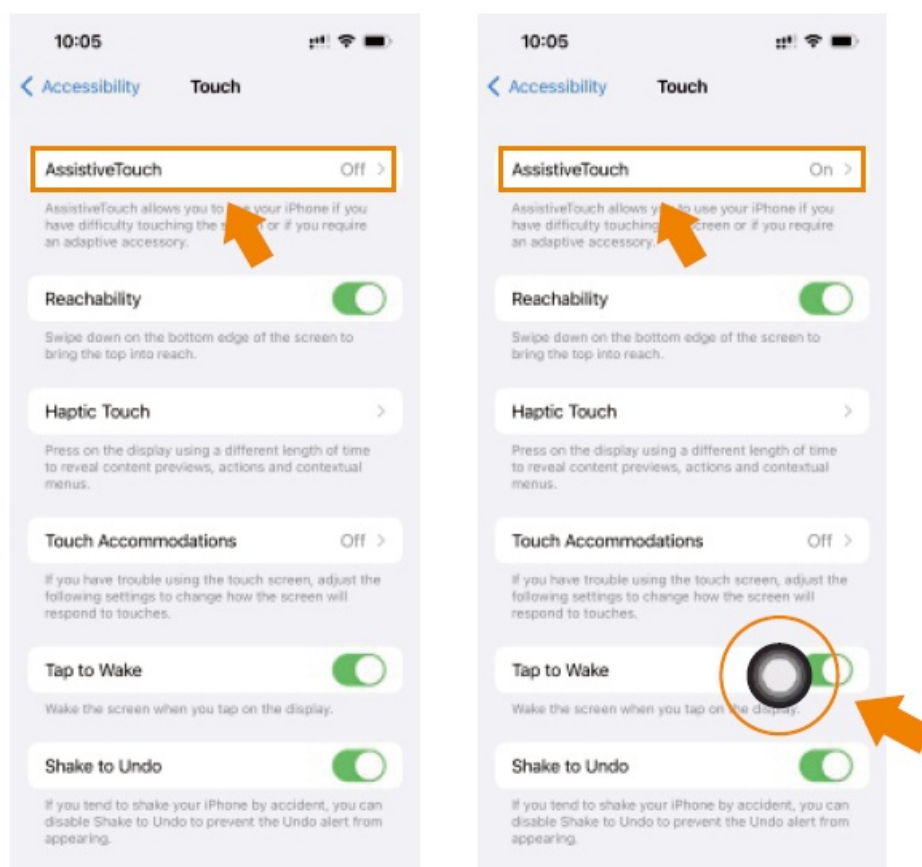
In the novel app mode, when pressing the down button, if the content scrolls too quickly, you can adjust the slider closer to the turtle icon to slow down the scrolling speed

About iPhone

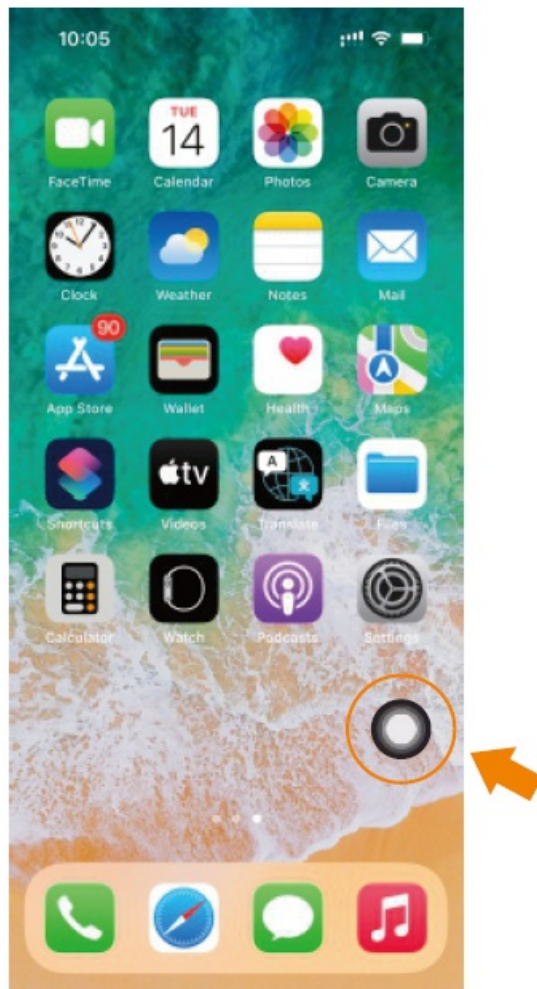
In the case of 10S you must make the following settings Lil before connecting to Blue Tooth
About iPhone Special reminders for iPhone users: Open the iPhone Settings -Accessibility Touch Assist Control is set to open state as shown below:



About iPhone, until the following icon appears special reminders for iPhone user: Open iPhone Settings - Accessibility Touch Assistive Touch, set it to on See below:



Until the following icon appears



You need to make sure the iOS ? software is above V14.8 5.

PACKAGE



Charging box



Remote controller

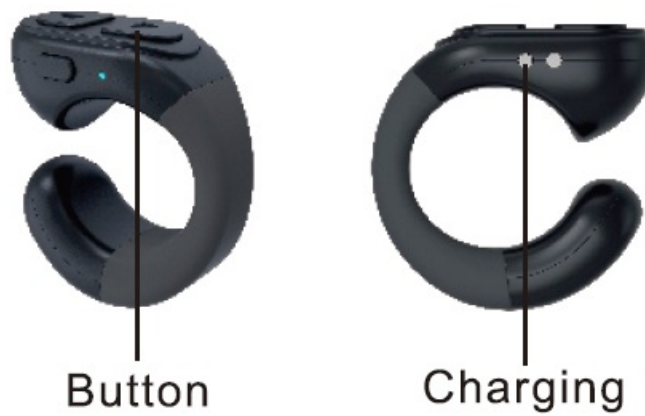
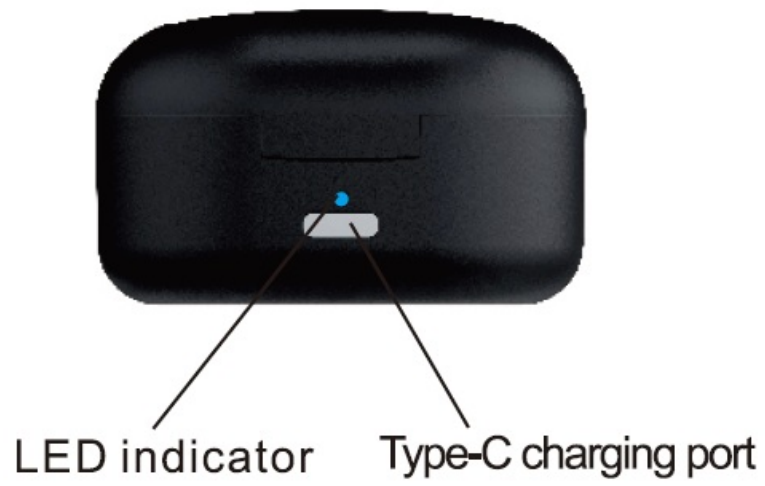


Type-C
charging cable



User manual

Use diagrams



TURN ON



Press and hold the middle button for 1 second till the blue light turn on



TURN OFF



Press and hold the middle button for 5 seconds till the blue light flashes rapidly



PAIRING

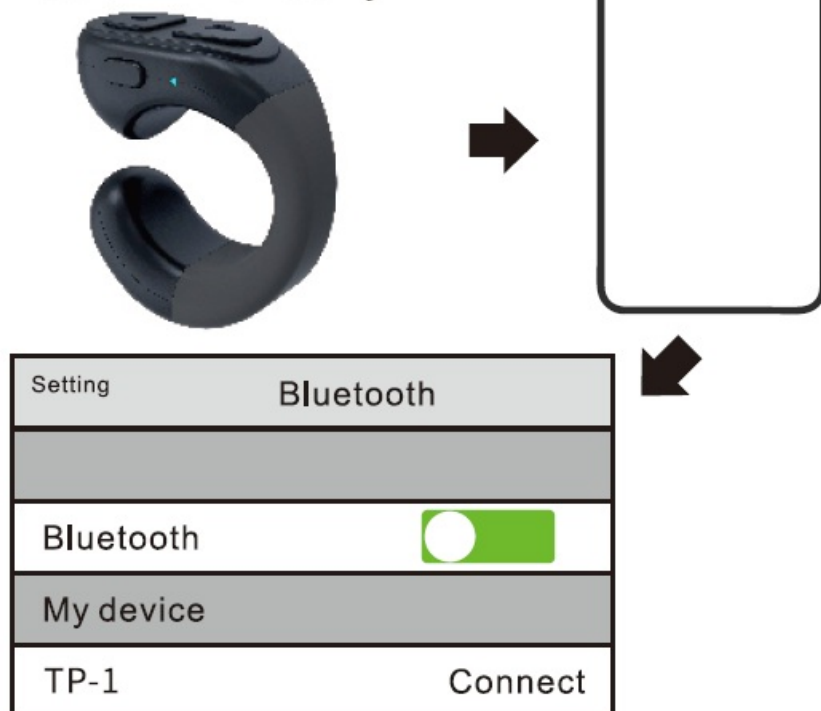


In the off state, press and hold the middle for 1 second till the blue light flashes rapidly, the controller is in pairing state



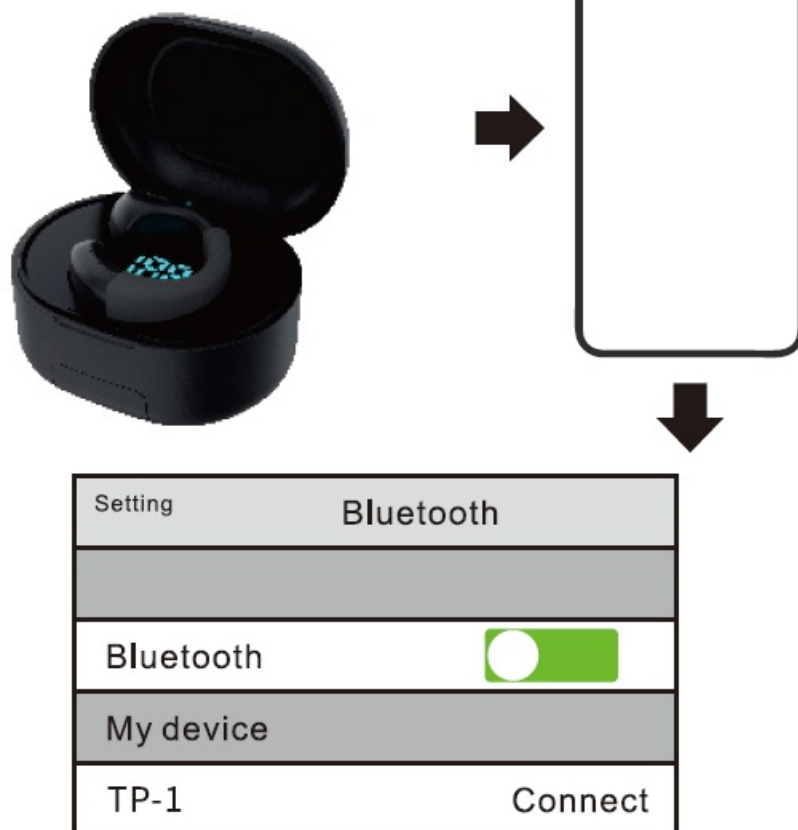
Connect mobile phone

Mode 1: Manually



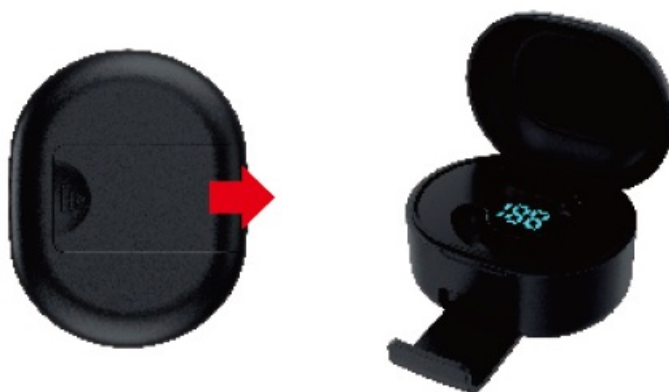
In the off state, press and hold the middle for 1 second till the blue light flashes rapidly, the controller is in pairing state, then turn on the Bluetooth of the mobile phone and search for the mobile phone, the Bluetooth menu shows: TP-1 and click to complete the Bluetooth connection. If you can't find it, please try to turn off the mobile phone's Bluetooth and turn it on again until the connection is completed.

Mode 2: Auto pairing



Turn on your mobile phone, the controller will automatically connect to the last mobile phone you connected before (make sure the Bluetooth of the mobile is turned on)

Mobile phone stand



Take bottom shelf slides out as phone stand battery level display for the charging case



Button function

Double click: swipe to right video Short press: previous video Long press: volume down

Short press: next video Long press: volume+ Double click: swipe to left video



Press and hold the for 1 second: Power on Short press: Pause Double Press: Like Press and hold for 1 second and release: turn off the screen Press and hold for 5 seconds: power off

Take photos and record videos

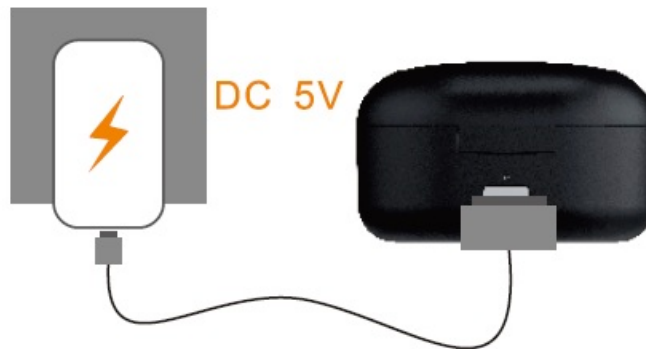




- In photo or video mode, press and hold any of these 2 keys will start or end take pictures or video recording
- Short press the middle button for focusing

Low battery warning



- Controller When the battery is low, the red light flashes slowly
- Charging box When the battery is low, the blue light flashes slowly

Charging diagram



	
Charging	Fully charged
Red light flashing	Red light on



	
Charging	Fully charged
Blue light on	Blue light off

Automatic shutdown function

1. Normal pairing or disconnecting from the mobile phone to enter the pairing.If the mobile phone is not connected within 5 minutes, it will automatically shut down
2. If there is no operation after 30 minutes it will automatically shut down

PARAMETER

Remote controller	
bluetooth version	Ver.5.0
transmit power	classII(-6dBm~ +4dBm)
Frequency (Hz)	2.40GHz~ 2.48GHz
bluetooth name	TP-1
password	0000
distance	10m
battery capacity	25mAH
charging time	1h
Charging box	
battery capacity	200mAH
charging time	1.5h

Frequently Asked Question

Q: Why it doesn't work or scroll?

Please check if there are any of the following problems

1. We're advising you to try using on opposite the direction of Ring.
 1. When you just open TikTok, it will refresh when you press the up button for the first time.
 2. Then If you need to watch the next video, Just press the down button.
 3. If you need to go back to the previous video, press the up button.
 4. When you go back to the first video, press the up button, and it will refresh again.
 5. Press the down button again, and other new videos will appear.

So please note the direction of the scroll remote ring use.
2. Make sure your phone has been connected to the remote ring via bluetooth, if your phone is an iPhone, you also need to pay attention to the following Issues
 1. The assistive touch button must be turned on when using the iPhone or iPad, it will leave a circle on the screen all the time
 2. The specific settings: open Settings>Accessibility>touch>turn on Assistive touch.
 3. It would help if you made sure the IOS software is above V14.8.5.

Q: Can it work on a Kindle?

A: It doesn't work for Kindle devices, But It can work for Kindle App.

Q: Can it create TikTok videos?

A: Can not, It can't be used to create videos, it can scroll up and down the video, like videos, and adjust the volume. And you can control your phone to take photos and videos remotely.

Q: Can it be used to start and stop • live on TikTok?

A: It can't start and stop •live on TikTok.


Q: Does this phone remote control also work for Facebook and Instagram?

A: It doesn't work for Facebook and Instagram.

Q: Does it work with Spotify?

A: It doesn't work for Spotify.

Documents / Resources

	<p>TUZTUALA TP-1 3 In 1 Function Video Remote And Remote Shutter And Phone Holder [pdf] User Manual</p> <p>TP-1 3 In 1 Function Video Remote And Remote Shutter And Phone Holder, TP-1, 3 In 1 Function Video Remote And Remote Shutter And Phone Holder, Function Video Remote And Remote Shutter And Phone Holder, Video Remote And Remote Shutter And Phone Holder, Remote And Remote Shutter And Phone Holder, Remote Shutter And Phone Holder, Shutter And Phone Holder, Phone Holder, Holder</p>
--	--

References

- [User Manual](#)

[Manuals+.](#) [Privacy Policy](#)

This website is an independent publication and is neither affiliated with nor endorsed by any of the trademark owners. The "Bluetooth®" word mark and logos are registered trademarks owned by Bluetooth SIG, Inc. The "Wi-Fi®" word mark and logos are registered trademarks owned by the Wi-Fi Alliance. Any use of these marks on this website does not imply any affiliation with or endorsement.