



tuztuala SE-1 3 In 1 Function Video Remote and Remote Shutter and Phone Holder User Manual

[Home](#) » [tuztuala](#) » tuztuala SE-1 3 In 1 Function Video Remote and Remote Shutter and Phone Holder User Manual 

Contents

- 1 tuztuala SE-1 3 In 1 Function Video Remote and Remote Shutter and Phone Holder
- 2 NOTE: About iPhone
- 3 Package
- 4 Use Diagrams
 - 4.1 Turn On
 - 4.2 Turn Off
 - 4.3 Pairing
- 5 Connect mobile phone
- 6 Mobile Phone Stand
- 7 Button Function
- 8 Take Photos And Record Videos
- 9 Low battery warning
- 10 Charging Diagram
- 11 Charging Diagram
- 12 Automatic shutdown function
- 13 Parameter
- 14 FCC STATEMENT
- 15 Documents / Resources
- 16 Related Posts

tuztuala

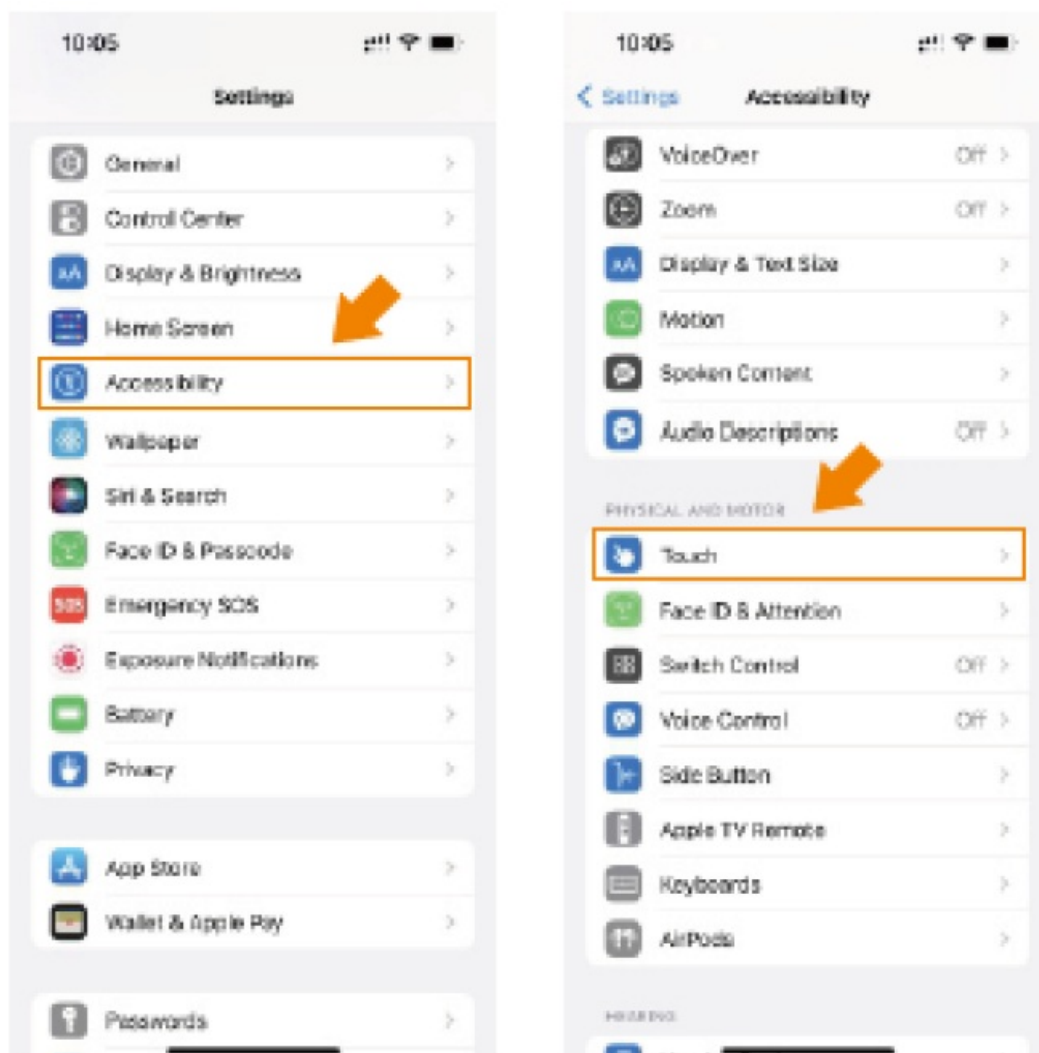
tuztuala SE-1 3 In 1 Function Video Remote and Remote Shutter and Phone Holder



NOTE: About iPhone

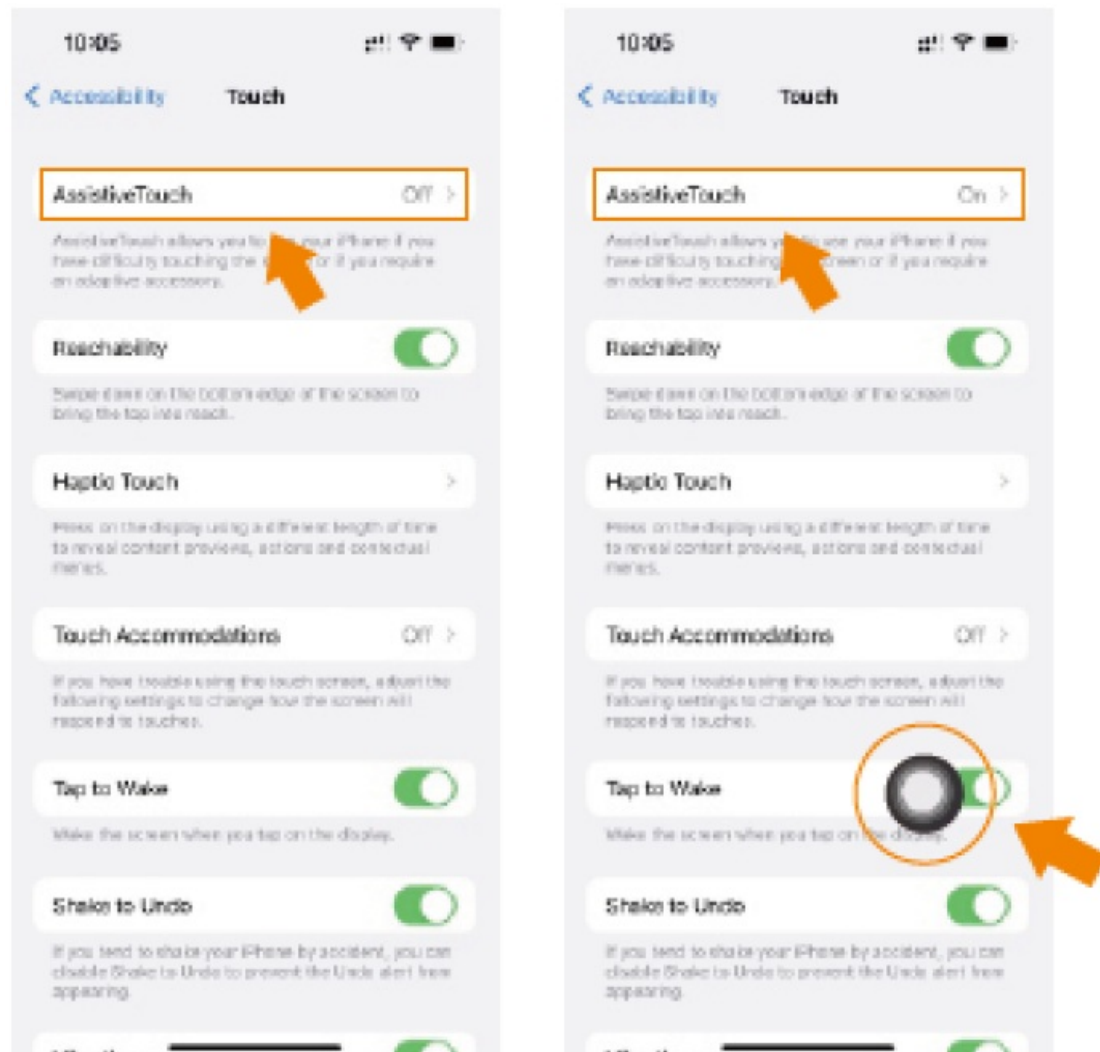
About iPhone Special reminders for iPhone users:

Open the iPhone Settings – Accessibility Touch Assist Control is set to open state as shown below:

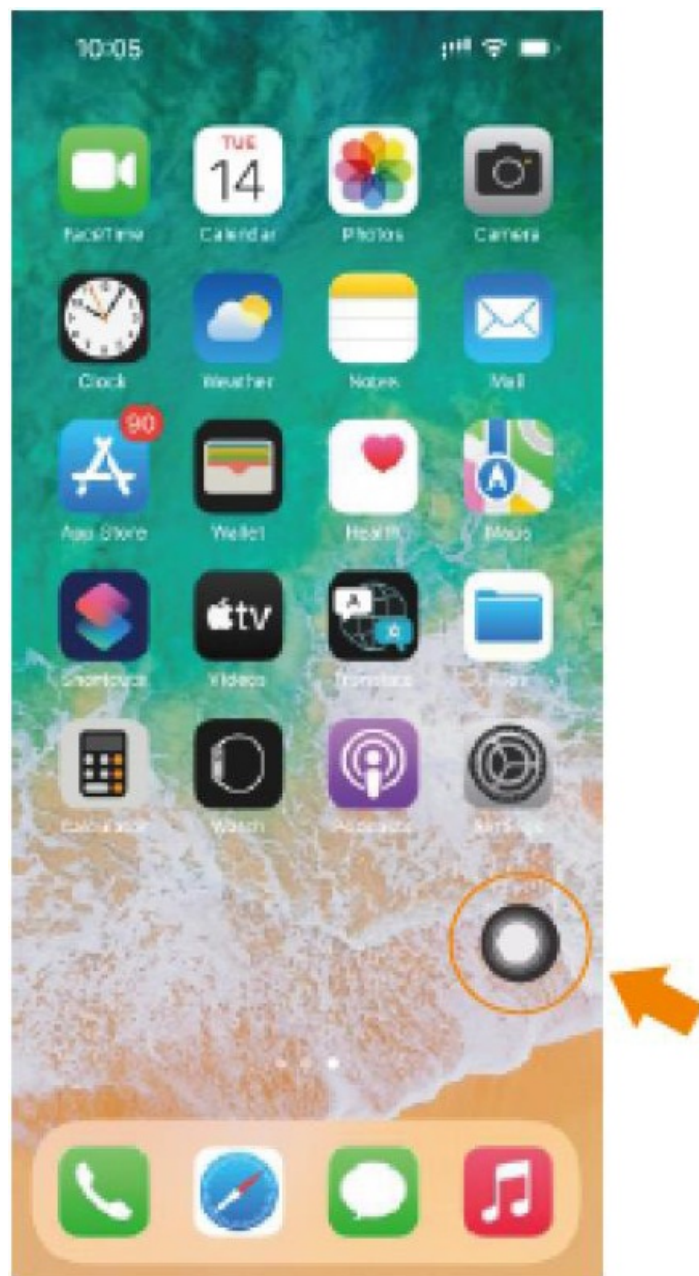


About iPhone until the following icon appears Special reminders for iPhone user: Open iPhone Settings-

Accessibility Touch Assistive Touch, set to on See below:



Until the following icon appears



Package



Charging box



Remote controller



Type-C
charging cable



User manual

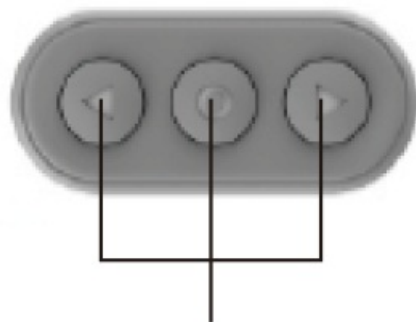
Use Diagrams



LED indicator



Type-C charging port

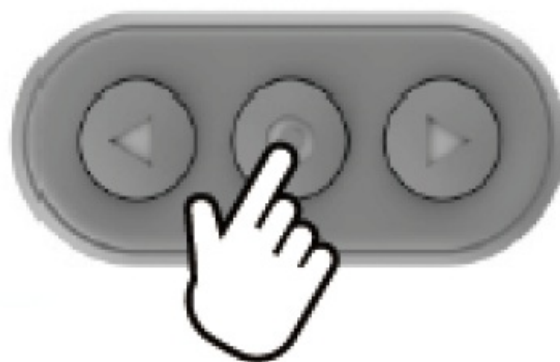


Button

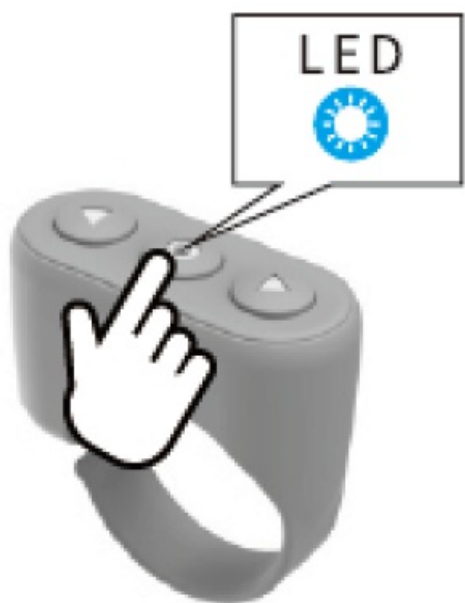


Charging

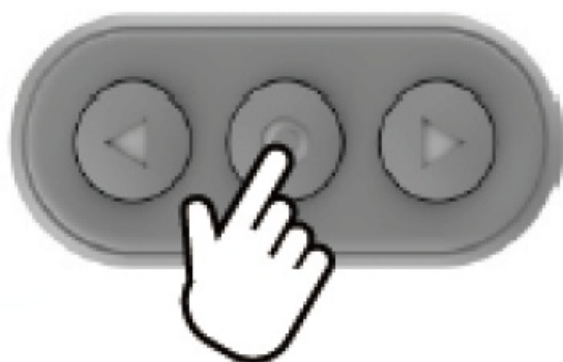
Turn On



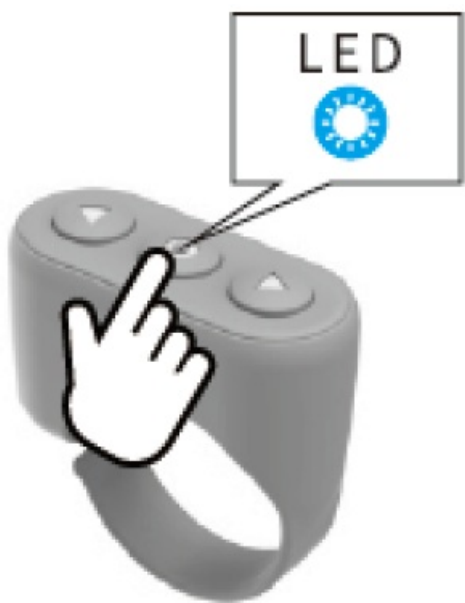
Press and hold the middle button for 1 second till the blue light turns on.



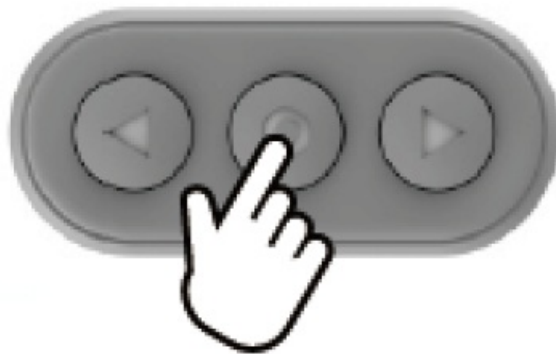
Turn Off



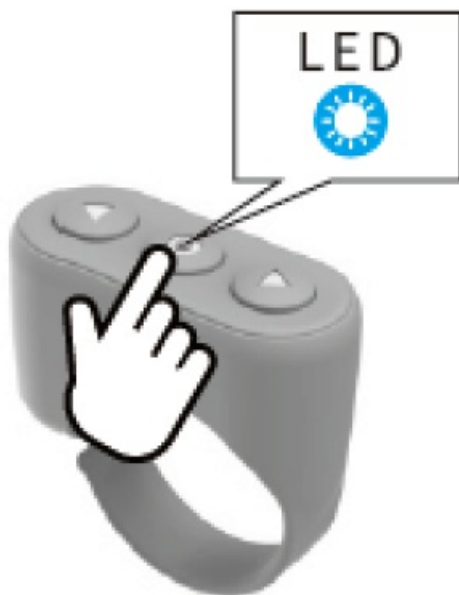
Press and hold the middle button for 5 seconds till the blue light flashes rapidly.



Pairing

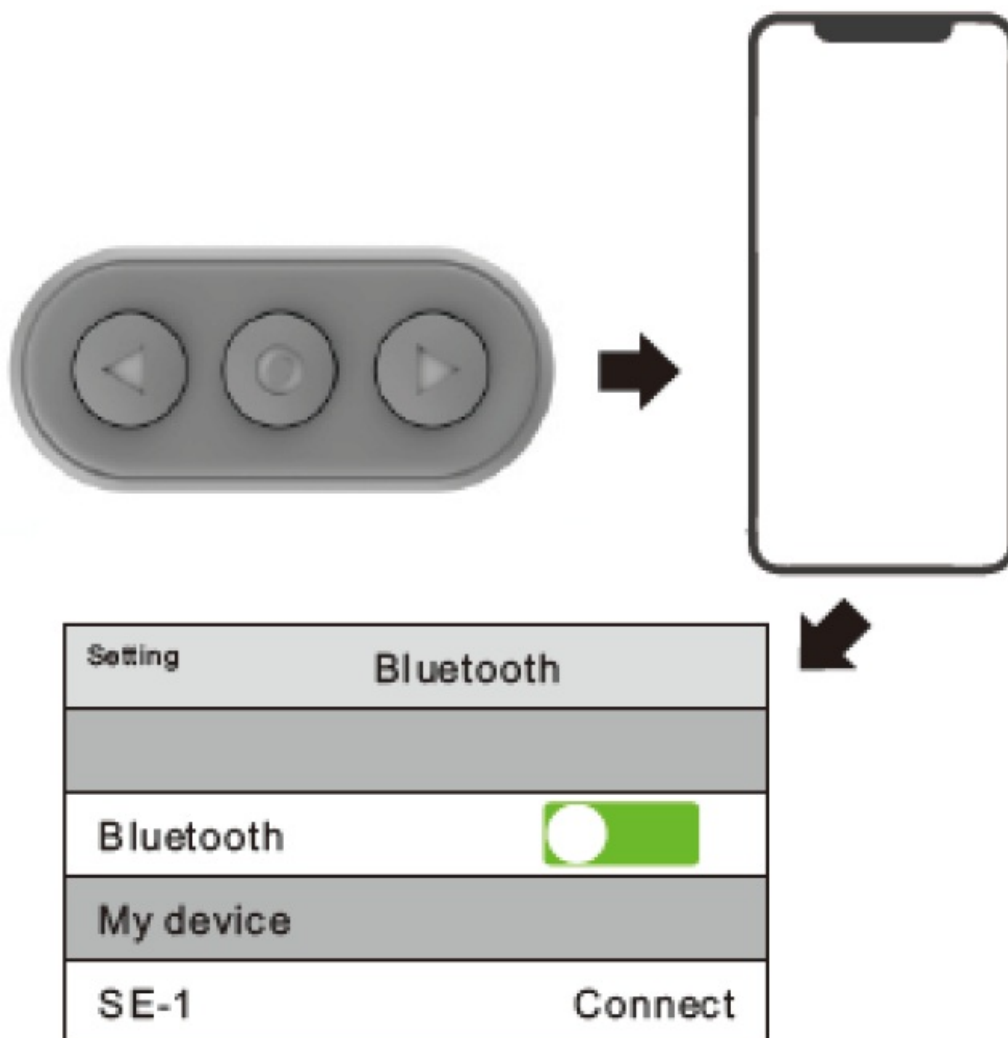


In the off state, press and hold the middle for 1 second till the blue light flashes rapidly, and the controller is in a pairing state.



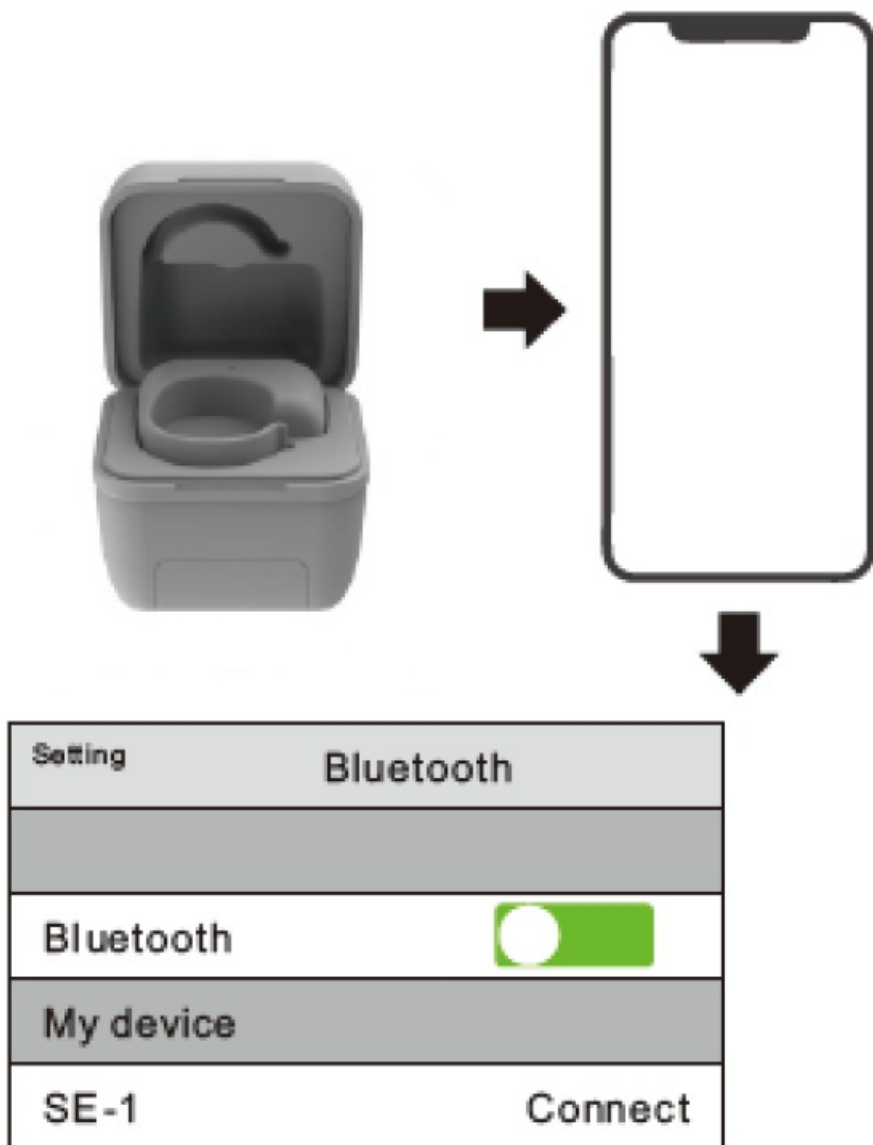
Connect mobile phone

Mode 1: Manually



In the off state, press and hold the middle for 1 second till the blue light flashes rapidly, the controller is in a pairing state, then turn on the Bluetooth of the mobile phone and search for the mobile phone, the Bluetooth menu shows: SE-1 and click to complete the Bluetooth connection. If you can't find it, please try to turn off the mobile phone's Bluetooth and turn it on again until the connection is completed.

Mode 2: Auto pairing



Turn on your mobile phone, the controller will automatically connect to the last mobile phone you connected to before (make sure the Bluetooth of the mobile is turned on).

Mobile Phone Stand



Take the bottom shelf slides out as a phone stand.



Button Function

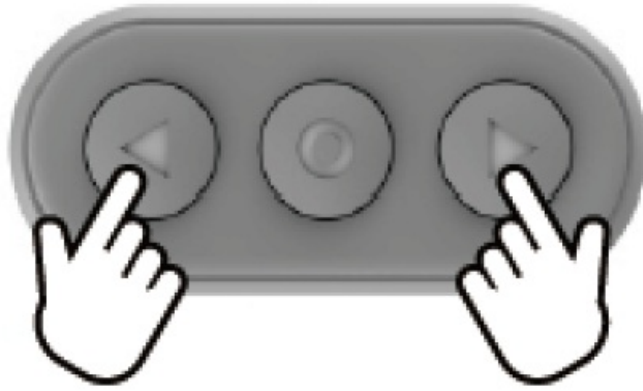
Double click: swipe to right video
Short press: previous video
Long press: volume down

Press and hold the for 1 second: Power on
Short press: Pause
Double Press: Like
Press and hold for 1 second and release: turn off the screen
Press and hold for 5 seconds: power off



Short press: next video
Long press: volume+
Double click: swipe to left video

Take Photos And Record Videos



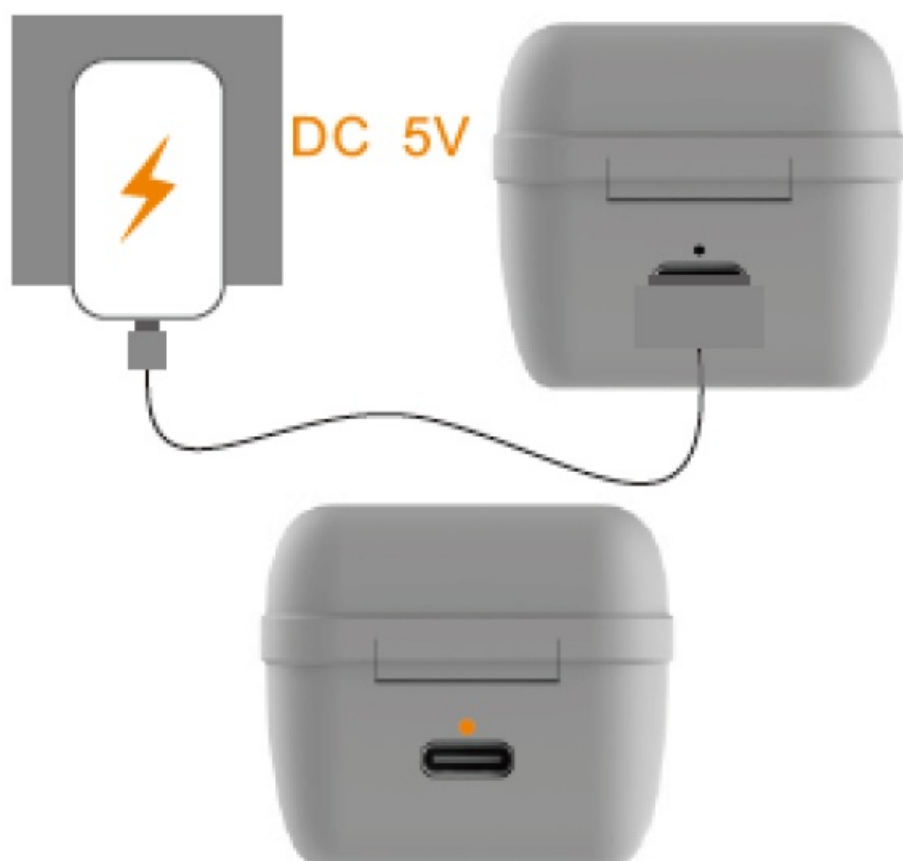
In photo or video mode, press and hold any of these 2 keys will start or end and take pictures or video recordings.

Short press the middle button for focus.

Low battery warning

- Controller When the battery is low, the red light flashes slowly
- Charging box When the battery is low, the blue light flashes slowly

Charging Diagram



Charging	Fully charged
Red light flashing	Red light on

Charging Diagram



	
Charging	Fully charged
Blue light on	Blue light off

Automatic shutdown function

1. Normal pairing or disconnecting from the mobile phone to enter the pairing, If the mobile phone is not connected within 5 minutes, it will automatically shut down.
2. If there is no operation after 30 minutes it will automatically shut down.

Parameter

Remote controller	
bluetooth version	Ver.5.0
transmit power	classII(-6dBm~ +4dBm)
Frequency (Hz)	2.40GHz~2.48GHz
bluetooth name	SE-1
password	0000
distance	10m
battery capacity	25mAH
charging time	1h
Charging box	
battery capacity	200mAH
charging time	1.5h

FCC STATEMENT

This device complies with part 15 of the FCC Rules. Operation is subject to the following two conditions:

1. This device may not cause harmful interference, and
2. This device must accept any interference received, including interference that may cause undesired operation.

Information to user

Any Changes or modifications not expressly approved by the party responsible for compliance could void the user's authority to operate the equipment.

Information to the user

Note:

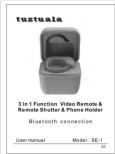
This equipment has been tested and found to comply with the limits for a Class B digital device, pursuant to part 15 of the FCC Rules. These limits are designed to provide reasonable protection against harmful interference in a residential installation. This equipment generates uses and can radiate radio frequency energy and, if not installed and used in accordance with the instructions, may cause harmful interference to radio communications. However, there is no guarantee that interference will not occur in a particular installation. If this equipment does cause

harmful interference to radio or television reception, which can be determined by turning the equipment off and on, the user is encouraged to try to correct the interference by one or more of the following measures:

- Reorient or relocate the receiving antenna.
- Increase the separation between the equipment and the receiver.
- Connect the equipment to an outlet on a circuit different from that to which the receiver is connected.
- Consult the dealer or an experienced radio/TV technician for help.

The device has been evaluated to meet the general RF exposure requirements. The device can be used in portable exposure conditions without restriction.

Documents / Resources

	<p>tuztuala SE-1 3 In 1 Function Video Remote and Remote Shutter and Phone Holder [pdf]</p> <p>User Manual</p> <p>SE-1, SE1, 2A8L2-SE-1, 2A8L2SE1, SE-1 3 In 1 Function Video Remote and Remote Shutter and Phone Holder, SE-1, 3 In 1 Function Video Remote and Remote Shutter and Phone Holder</p>
---	--