

Tuya ws-z Zigbee Switch User Manual

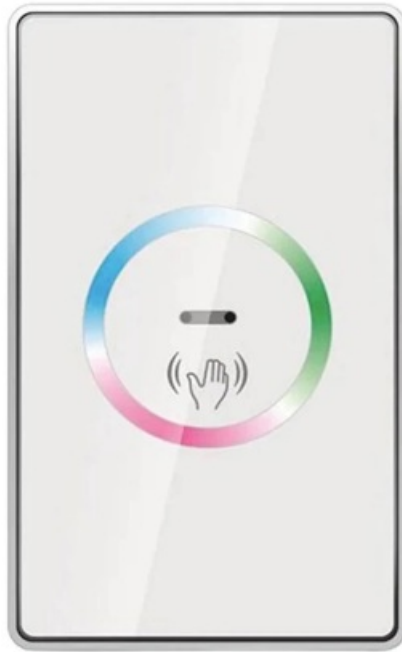
[Home](#) » [Tuya](#) » Tuya ws-z Zigbee Switch User Manual 

Contents

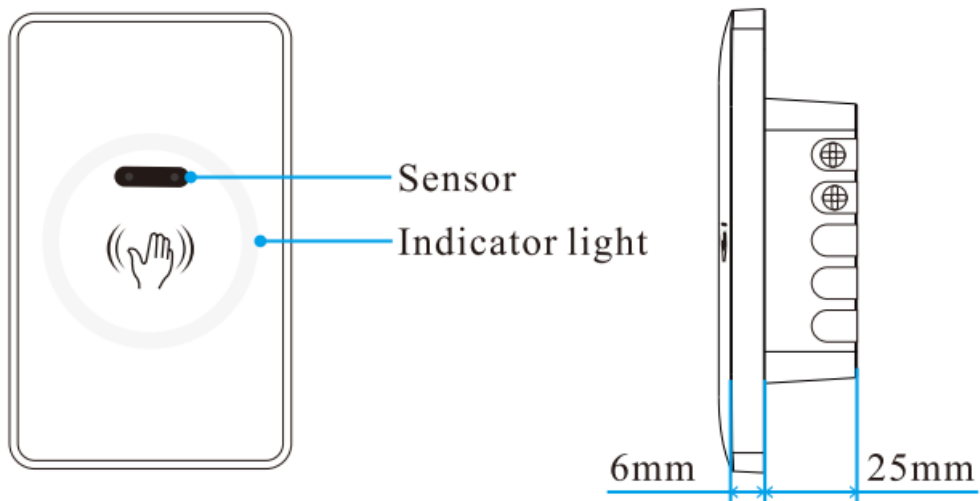
- [1 Tuya ws-z Zigbee Switch](#)
- [2 Specification](#)
- [3 Installation](#)
- [4 Pairing mode](#)
- [5 How to use it](#)
- [6 FAQ's](#)
- [7 Documents / Resources](#)
 - [7.1 References](#)
- [8 Related Posts](#)



Tuya ws-z Zigbee Switch



Specification

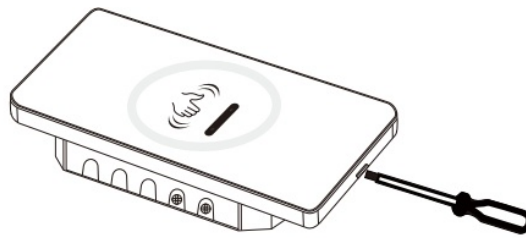


- **Product name:** Zigbee wave smart switch
- **Product model:** ZM-HI
- **Protocol:** Zigbee 3.0
- **Input Voltage:** AC 100~240V
- **Load:** $\leq 600\text{W/gang}$
- **Wireless standard:** IEEE 802.15.4(2.400-2.484GHz)

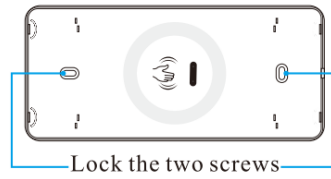
Note: Please power off before installation

Installation

- Use a small screwdriver to open the glass cover from the notch.



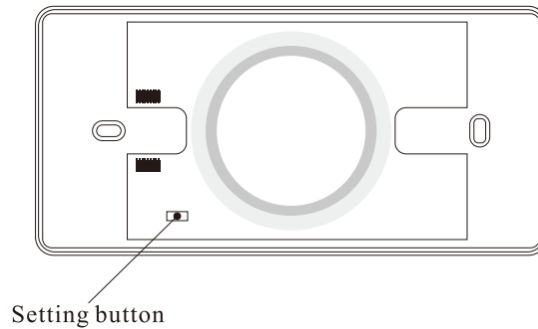
- Load the wall cassette and fix the screws, cover the plate.



- Supply power, it will with RGB light cycle in 2 times.

Pairing mode

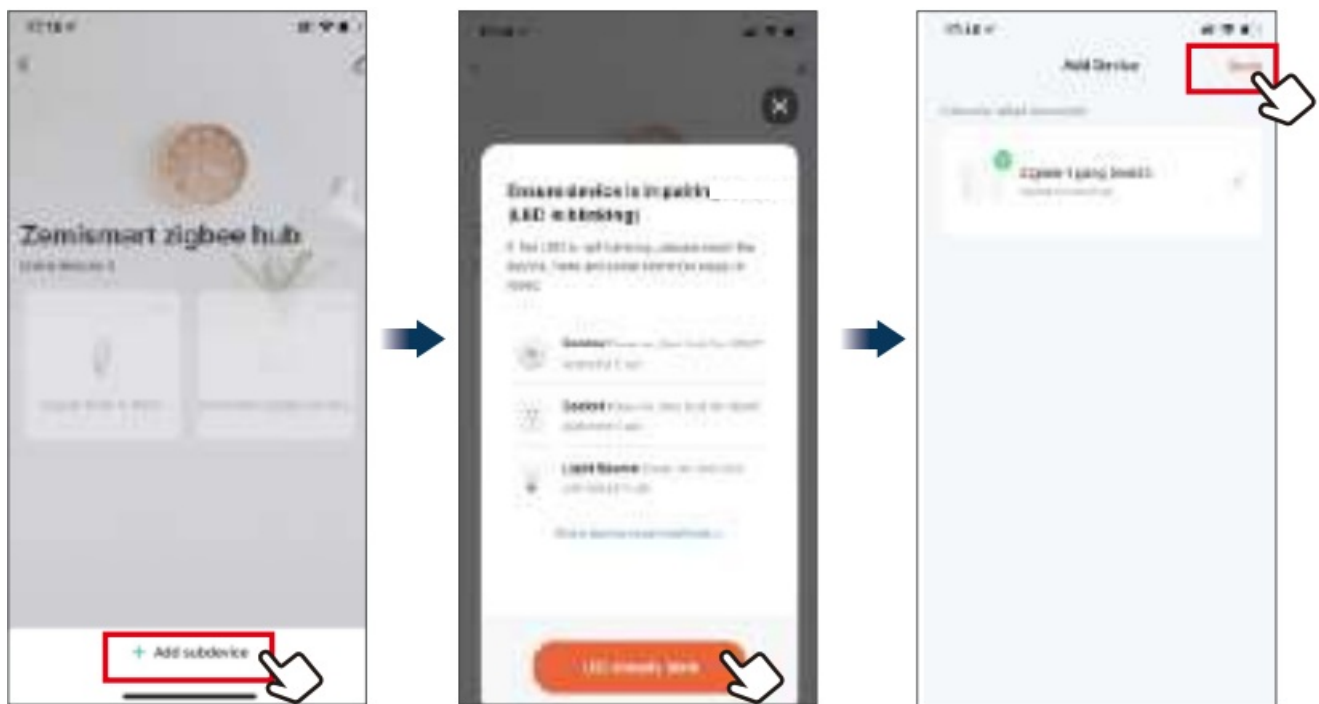
1. Remove the glass.
2. Press and hold the setting button for 7 seconds, it will with a di-da-di-da sound, and the RGB lights keep running, which means that entering pair mode.



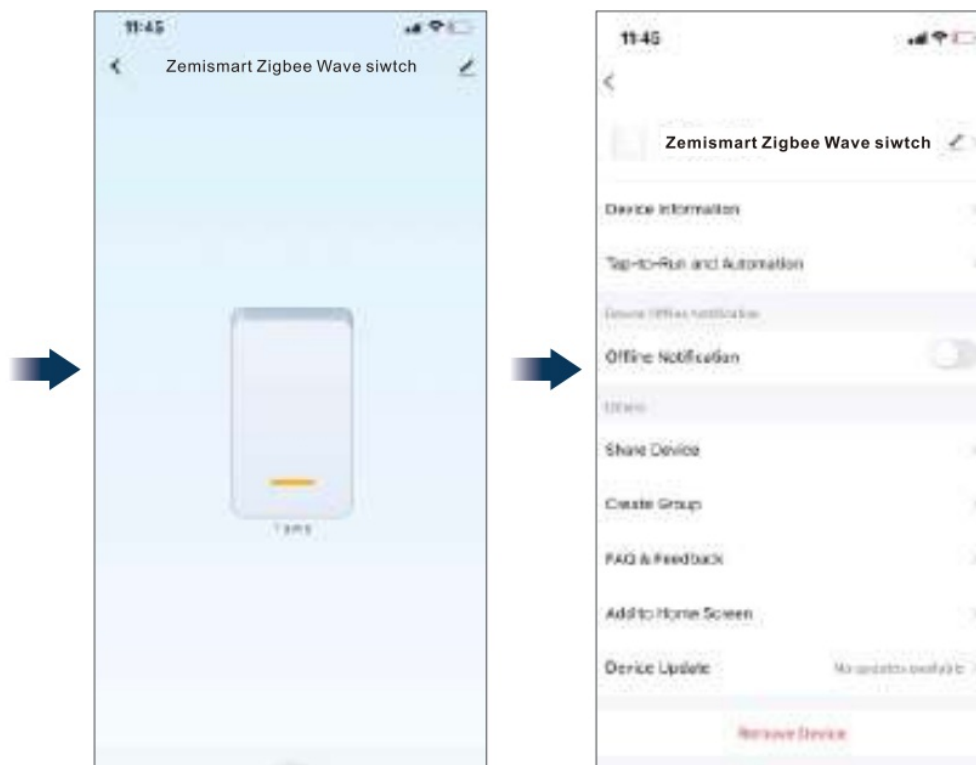
3. Use the Tuya app to discover it.

Connect to Tuya APP

1. Open Tuya app-Zigbee hub-Add subdevice.
2. Click "LED already blink".
3. Click "Done".



4. Connection succeeded.

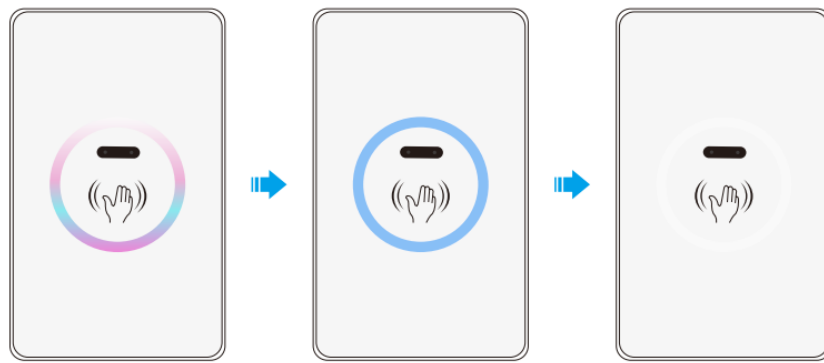


How to use it

Wave your hand near the switch within 15cm, it will be turned ON/OFF.

1. Turn ON the switch

RGB light cycle 2 times, then lights up blue (medium brightness), then turns off after 10 seconds.



2. Turn OFF the switch

RGB light cycle 2 times, then lights up white (maximum brightness), then turns Off after 10 seconds.



FAQ's

What is a Zigbee Switch?

A Zigbee switch is a smart switch that utilizes Zigbee wireless communication protocol to connect and communicate with other Zigbee-enabled devices, such as smart home hubs or controllers.

How to Install the Tuya WS-Z Zigbee Switch?

Follow the installation instructions provided in the product manual. Typically, you'll need to turn off the power, replace the existing switch with the Zigbee switch, and then configure it using a compatible smart home system.

Is Tuya WS-Z Compatible with my Smart Home Hub?

Ensure that your smart home hub supports Zigbee devices. Check the compatibility list on the Tuya website or contact their support for the latest information.

How to Pair the Tuya WS-Z Zigbee Switch with a Hub?

Usually, you'll need to put your Zigbee hub into pairing mode and then follow the switch's manual to initiate the pairing process. This often involves pressing a specific button on the switch.

Can I Control Tuya WS-Z Switch Remotely?

Yes, if your smart home system allows remote access, you should be able to control the Tuya WS-Z Zigbee

Switch through a mobile app or web interface.

What Features Does the Tuya WS-Z Zigbee Switch Offer?

Check the product specifications for features such as dimming capabilities, compatibility with voice assistants like Alexa or Google Assistant, and automation options.

Troubleshooting Connectivity Issues:

If you're experiencing connectivity problems, ensure that the switch is within the range of your Zigbee hub. Check for interference and make sure your hub's firmware is up to date.

Can Tuya WS-Z Zigbee Switch Work Without a Hub?

The Tuya WS-Z Zigbee Switch may require a Zigbee hub for full functionality. Check the product documentation to confirm whether it can work independently or if a hub is necessary.


How to Reset Tuya WS-Z Zigbee Switch?

The reset procedure is usually outlined in the product manual. It often involves pressing and holding a specific button on the switch for a certain duration.

What is the Warranty for Tuya WS-Z Zigbee Switch?

Check the warranty information provided by the manufacturer or retailer. Warranty periods can vary, and it's essential to know the terms and conditions.

Documents / Resources

	Tuya ws-z Zigbee Switch [pdf] User Manual ws-z Zigbee Switch, ws-z, Zigbee Switch, Switch
---	--

References

- [User Manual](#)