



tuya WiFi IR+RF Remote Control User Manual

[Home](#) » [Tuya](#) » tuya WiFi IR+RF Remote Control User Manual



Wi-Fi IR+RF Remote Control USER MANUAL

Contents [[hide](#)]

- [1 WiFi IR+RF Remote Control](#)
- [2 Product Presentation](#)
- [3 Product Specification](#)
- [4 Functions](#)
- [5 FAQ](#)
- [6 Documents / Resources](#)
- [7 Related Posts](#)

WiFi IR+RF Remote Control

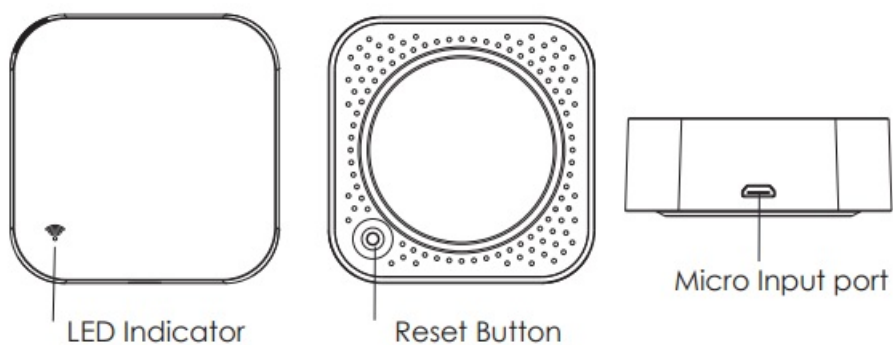


Model: S11

Thanks for choosing our product !

Say goodbye to remote controls of the IR home appliances such as TV, Air-con, TV box, light, Fan, Audio, etc. You can remotely control these devices with the tap of your finger on the mobile App, also you can control RF-enabled devices like curtains, roller shutters, garage doors, RF switches, etc. Please read the user manual carefully before use and keep it for future reference.

Product Presentation



Product Specification

Size: 60*60*20mm

Micro Input: DC 5V/1A

LED Indicator: Blue

Infrared Frequency: 38KHz

Infrared Range: ≤12 Meters

Wi-Fi Protocol: 2.4GHz

Wi-Fi Standard: IEEE 802.11 b/g/n

Radio Frequency: 433 MHz

Checklist before using the device:

- Your smartphone has connected to 2.4GHz Wi-Fi network.
- Input the correct Wi-Fi password.
- Your smartphone must be Android 4.4 + or iOS 8.0 +.
- Your Wi-Fi router is MAC-open.
- If the number of devices connected to the Wi-Fi router reach the limit, you can try to disable a device to vacate the channel or try with another router.

How to set up:

- Use your smartphone to scan below QR code, or search “Smart Life” app in Google Play Store or APP Store to download and install.



Smart Life

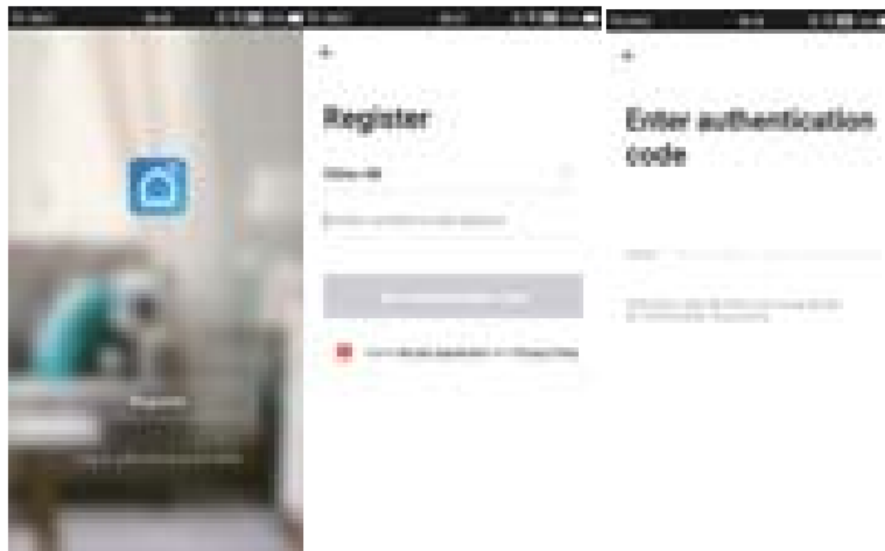


QR Code



<https://smartapp.tuya.com/smartlife>

- Create an account with your mobile number and authentication code.



- Connect your mobile to your Wi-Fi router, supply power to the remote control with a Micro cable, click “+” in the upper right corner of the homepage or click “Add Device”.



4. 1) Turn on the Bluetooth in mobile: The app will advise you to turn on the Bluetooth in your mobile, then you choose the device to add. Enter your Wi-Fi name and password, it will connect to the network automatically.

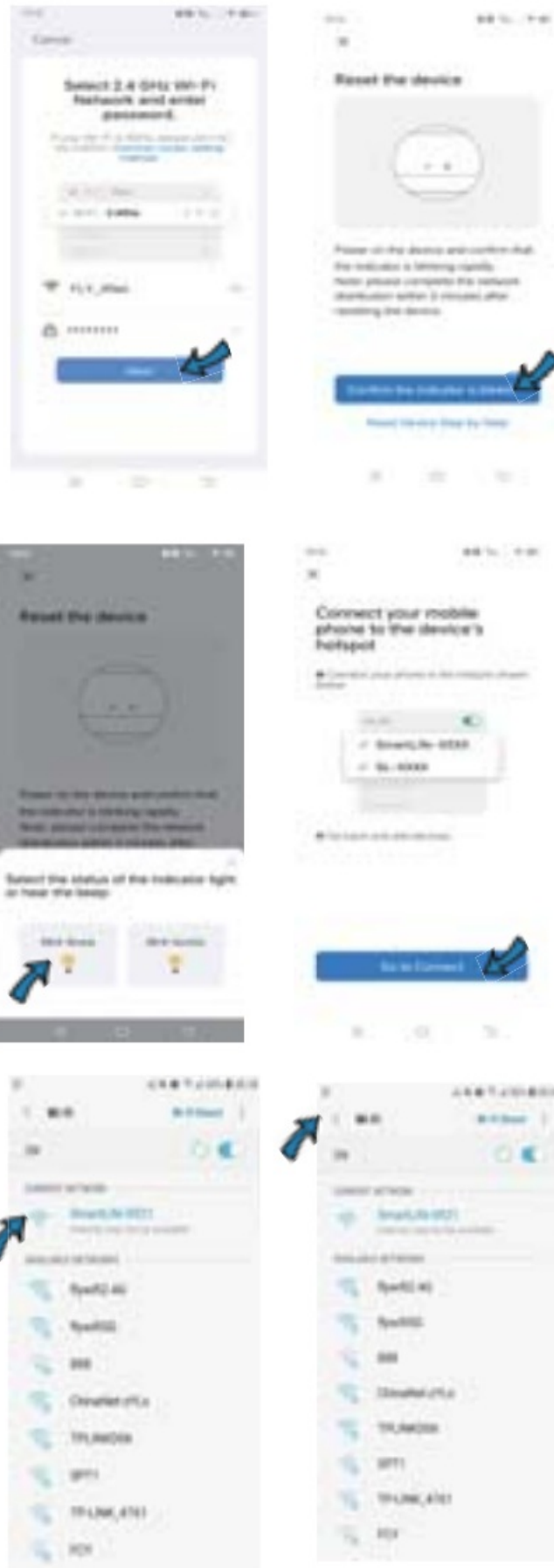


2) Do not turn on the bluetooth: Select "Universal Remote Control (Wi-Fi+BLE)" from "Others", enter the Wi-Fi password, select "Blink Quickly", and make sure the LED indicator is blinking rapidly. if not, please hold the reset button for about 5s till the indicator blink rapidly. it will connect automatically.

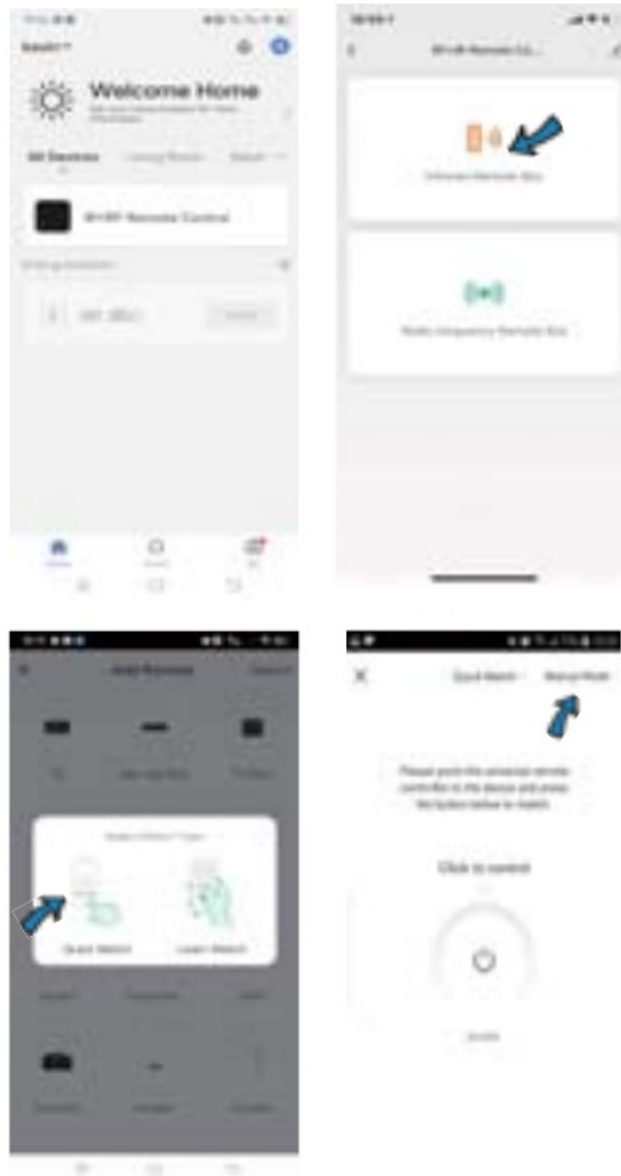


3) You can also select “Blink Slowly”, and make sure the LED indicator is blinking slowly, if not, hold the reset button for about 5s till the indicator blink slowly. Connect your mobile to the device’s hotspot: “SmartLife-XXXX”, then click to return to App interface, it will connect to Wi-Fi

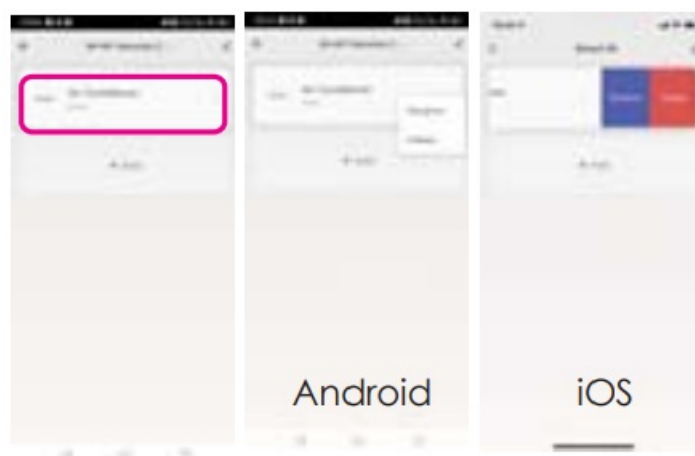
automatically, and configuration is completed.



5. Tap “IR+RF Remote Control”, click “Infrared Remote Box”, select the IR device and its brand you need control, please select “Manual Mode” to match at least 3 buttons to check if the device reacts properly, if yes, match complete, you can control it now.



6. After adding the device, if you want to edit the name, For Android, long press the box, it will pop up “Rename”, click it to edit. For iOS, slide the box towards the left, choose “Rename”.



7. If you can not find the brand of the device in the brand list, you click “DIY” to learn the buttons of other brands’ remote control, so you can also control the device.



Step 1

Step 2

Step 3



Step 4

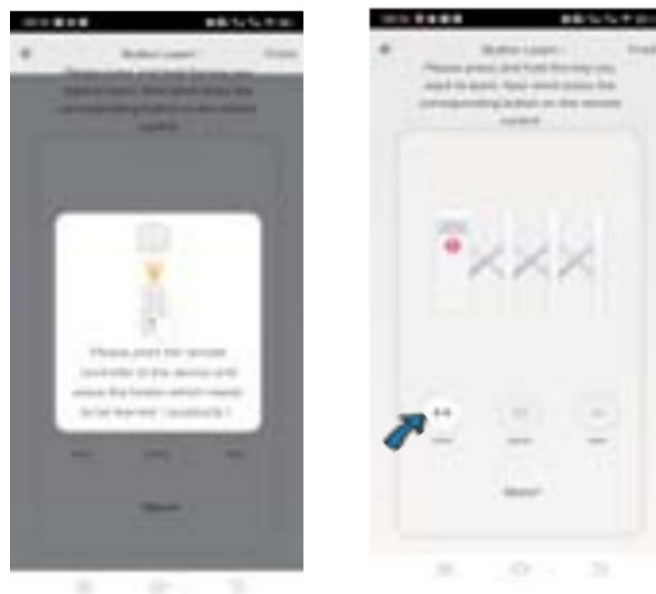
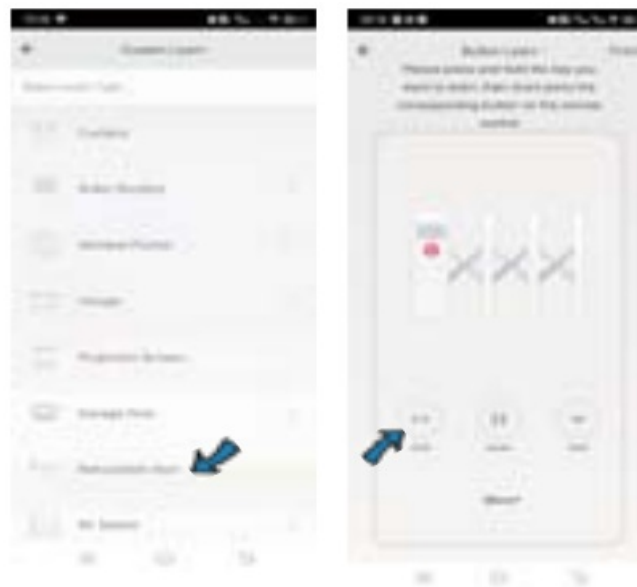
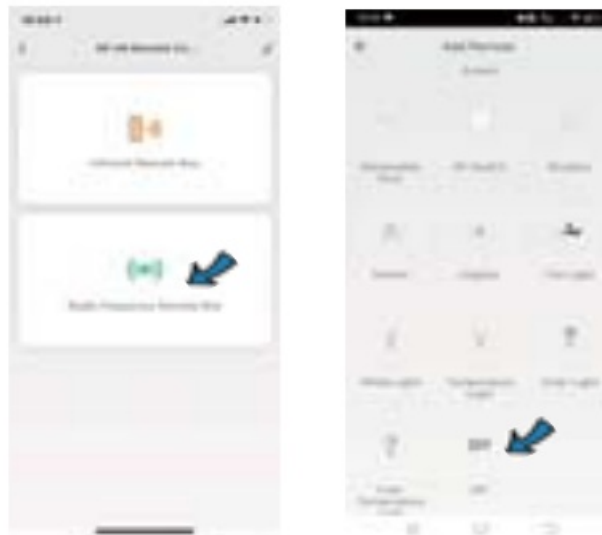
Step 5

Step 6

8. You can click “+” to continue to copy other buttons or click “Finish”.

Notes:

1. It only support 38KHz frequency, if the IR remote unable to receive commands from the IR device, it is likely that the frequency of IR device does not match, unable to study commands.
 2. DIY does not support voice control.
9. You can also control the RF-enabled devices by DIY learning buttons of RF device's remote control. Once button is learned successfully, press the button to check whether it works.

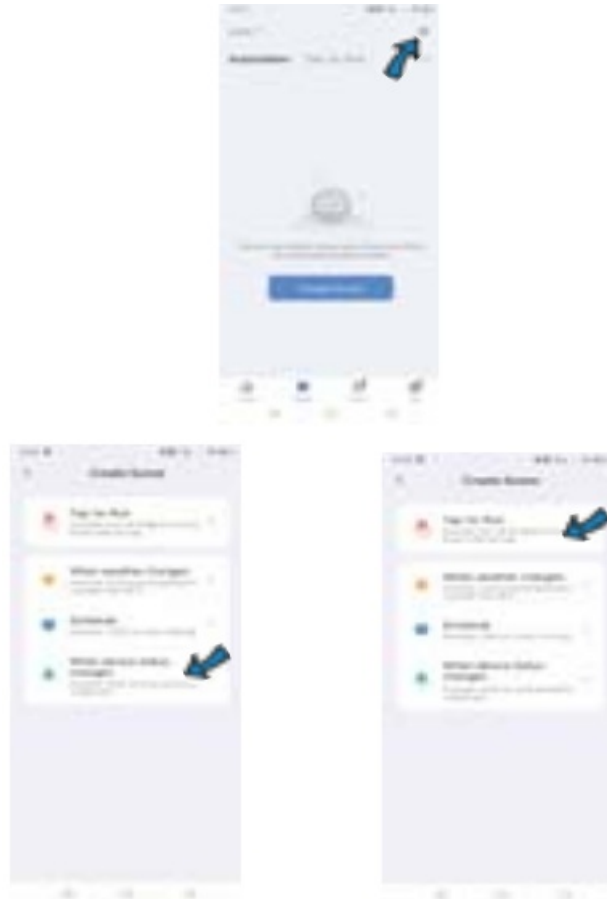


Functions

1. Customize Scenario

Create smart scenario for IR devices, click "Scene "page, then click" +" at

the upper right corner to set conditions and tasks.



2. Remote control

You can control IR/RF devices remotely wherever you are at anytime on the mobile app.

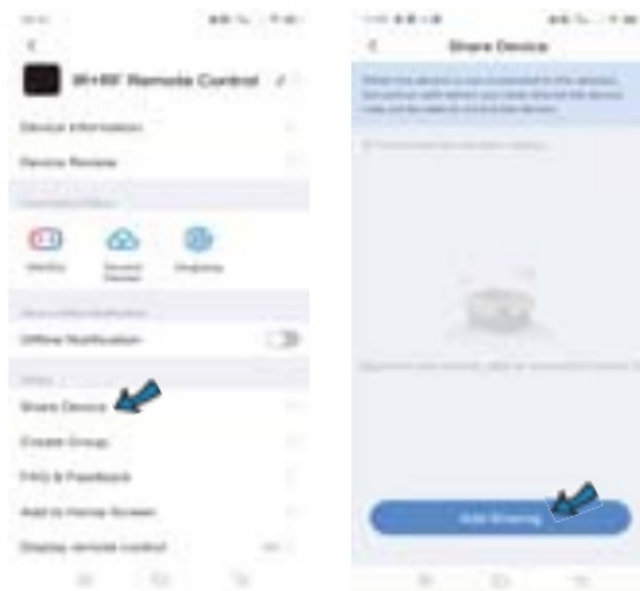
3. Set Schedule

Select “Tap to Run” or “Automation” in “Scene” page, tap “+” to select “Schedule” to set power on/off.



4. Share devices

You can share added devices with your family members, so they can also control the devices.



5. Third-party Voice Control

Works with amazon alexa and google assistant.

FAQ

How many devices can be controled in the APP?

– You can create 20 homes in APP, each home can add 200 devices at most. In total, one APP can control 4000 devices.

What should we do when we can not use IR remote to control device?

– IR can not penetrate walls, so make sure there is no obstacle between IR remote and the IR devices.

Can i control devices through 2G/3G /4G network?

– Both IR remote and mobile device are required to share the same wifi network when adding the IR remote. After configuration done, you can control devices through 2G/3G/4G network. Currently it does not support 5G network.

What should i do when device configuration process fail?

– You can:

- 1)Check whether IR remote is powered on or not.
- 2)Check whether your mobile phone is connected to 2.4GHz wifi network.
- 3)Check your network connectivity, make sure the Wi-Fi router is working properly.
- 4)Make sure the wifi password is correct.

What should i do if the device is often offline?

- 1)Check whether the router is powered off or disconnected from the network.
- 2)Check whether the router has been replaced, or Wi-Fi name or password has been changed.
- 3)Please confirm whether the device has just updated the firmware. The device will be disconnected from the network when the firmware is updated, and will automatically connect to the network after update completed.
- 4)The Wi-Fi signal of the device is too poor.
- 5)The location of the device is too far away from the router
- 6)If the device goes offline after a period of use, but after restarting the router or re-networking the device, the device returns to normal. Indicating the router is overloaded due to long-term

high-load use, you need to replace it with a more powerful one, or reduce the number of devices connected to the router.

7) You can also use phone hotspot to check whether it is the problem of network.

What should i do when DIY learning the buttons for IR device?

– It only supports 38KHz IR frequency, if IR remote unable to receive commands from the IR device, it is likely that the frequency of IR device does not match, unable to study commands. So please check IR frequency of the device.

What should we do when we learn the buttons of RF devices?

1) When App pops up the window, long press the button till it shows learning succeeded, if fail after trying 3 times, please try to short press the buttons.

2) RF remote only supports fixed radio frequency 315MHz and 433.92 MHz.

3) For devices with higher security needs, some remotes of them use rolling code and encrypted code. so you can not copy the buttons. The fixed codes include 1527 series, PT 2262 /2264 /2267, the rolling code includes HCS 301/300.

FCC Statement

This equipment has been tested and found to comply with the limits for a Class B digital device, pursuant to part 15 of the FCC rules. These limits are designed to provide reasonable protection against harmful interference in a residential installation. This equipment generates, uses and can radiate radio frequency energy and, if not installed and used in accordance with the instructions, may cause harmful interference to radio communications. However, there is no guarantee that interference will not occur in a particular installation. If this equipment does cause harmful interference to radio or television reception, which can be determined by turning the equipment off and on, the user is encouraged to try to correct the interference by one or more of the following measures:

- Reorient or relocate the receiving antenna.
- Increase the separation between the equipment and receiver.
- Connect the equipment into an outlet on a circuit different from that to which the receiver is connected.
- Consult the dealer or an experienced radio/TV technician for help.

To assure continued compliance, any changes or modifications not expressly approved by the party.

Responsible for compliance could void the user's authority to operate this equipment.

(Example- use only shielded interface cables when connecting to computer or peripheral devices).

This equipment complies with Part 15 of the FCC Rules. Operation is subject to the following two conditions:

- (1) This device may not cause harmful interference, and
- (2) This device must accept any interference received, including interference that may cause undesired operation.

FCC Radiation Exposure Statement:

The equipment complies with FCC Radiation exposure limits set forth for uncontrolled environment. This equipment should be installed and operated with minimum distance 20cm between the radiator and your body.



Documents / Resources



[tuya WiFi IR+RF Remote Control](#) [pdf] User Manual
Y168, 2A8TU-Y168, 2A8TUY168, WiFi IR RF Remote Control, WiFi Remote Control, IR RF Remote Control, IR RF Remote, Remote Control, Remote

There has been a critical error on this website.

[Learn more about troubleshooting WordPress.](#)