



## tuya Smart IR Remote Control with Temperature & Humidity Sensor User Guide

[Home](#) » [Tuya](#) » tuya Smart IR Remote Control with Temperature & Humidity Sensor User Guide 



### Smart IR Remote Control With Temperature & Humidity Sensor USER MANUAL



## Contents

- [1 Smart IR Remote Control with Temperature & Humidity Sensor](#)
- [2 Product Presentation:](#)
- [3 Product Specification](#)
- [4 Checklist before using the device:](#)
- [5 How to set up:](#)
- [6 Functions](#)
- [7 FAQ](#)
- [8 Documents / Resources](#)
- [9 Related Posts](#)

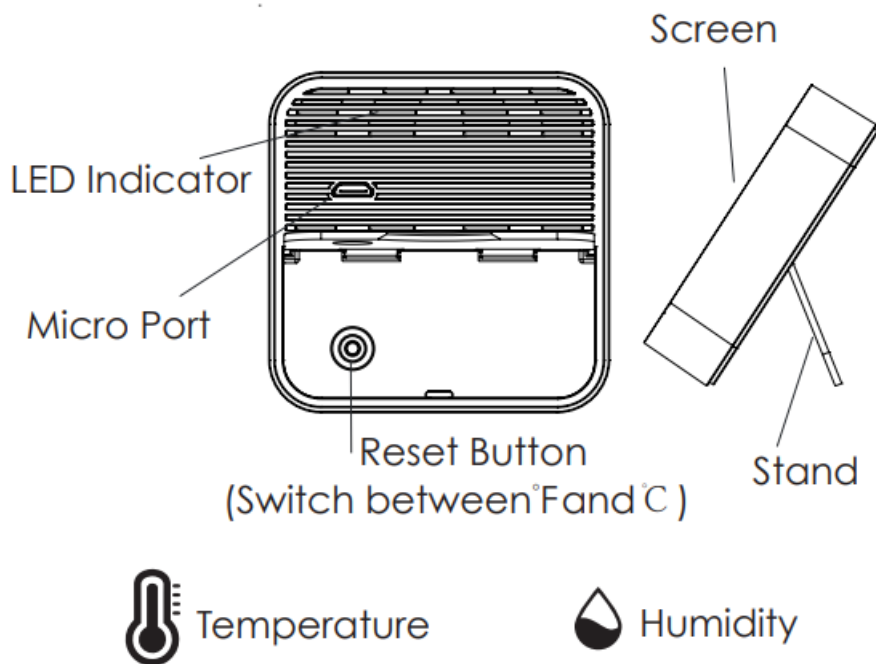
## Smart IR Remote Control with Temperature & Humidity Sensor

Thanks for choosing our product !

Say goodbye to use remote controls for each of the IR home appliances such as TV, Air-conditioner, TV box, light, Fan, Audio, etc. You can remotely control these devices on the mobile App, Also you can view temperature, humidity, time, date and week on screen directly.

Please kindly read the user manual carefully before usage and keep it for future reference.

### Product Presentation:



### Product Specification

Size: 65\*65\*17mm

Micro Input: DC 5V/1A

LED Indicator: Blue

Infrared Frequency: 38KHz

Infrared Range: ≤10 Meters

Wi-Fi Protocol: 2.4GHz

Wi-Fi Standard: IEEE 802.11 b/g/n

Temperature Measure Range: 0 °C~ 60°C

Temperature Accuracy: + -1°C

Humidity Measure Range: 0% RH~99% RH

Humidity Accuracy: + - 5% RH

## Checklist before using the device:

- Your smartphone has connected to a 2.4GHz Wi-Fi network.
- You have input the correct Wi-Fi password.
- Your smartphone must be Android 4.4 + or iOS 8.0 +.
- Your Wi-Fi router is MAC-open.
- If the numbers of devices connected to Wi-Fi router reach the limit, you can try to disable a device to vacate the channel or try with another Wi-Fi router.

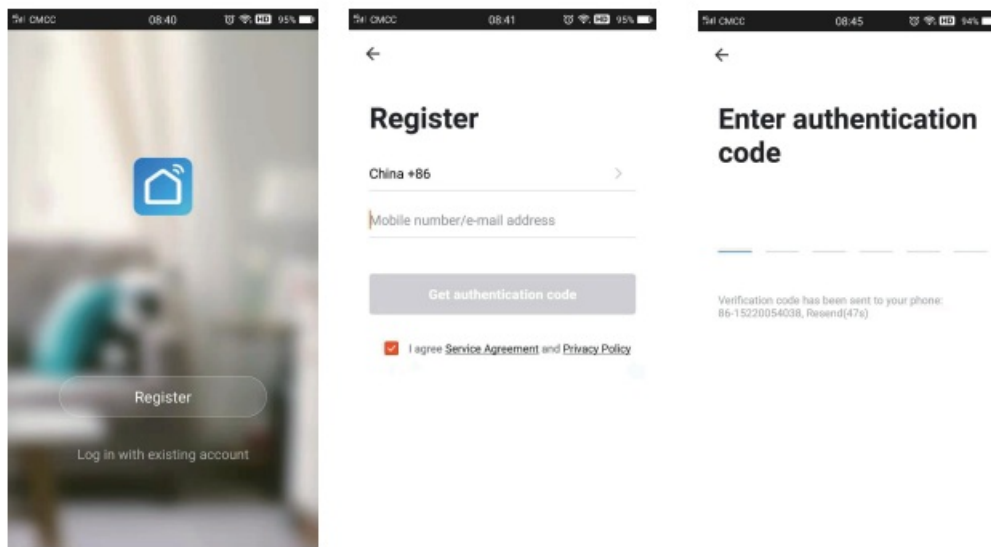
## How to set up:

- Use your smartphone to scan QR code, or search “Smart Life” app in Google Play Store or APP Store to download and install.

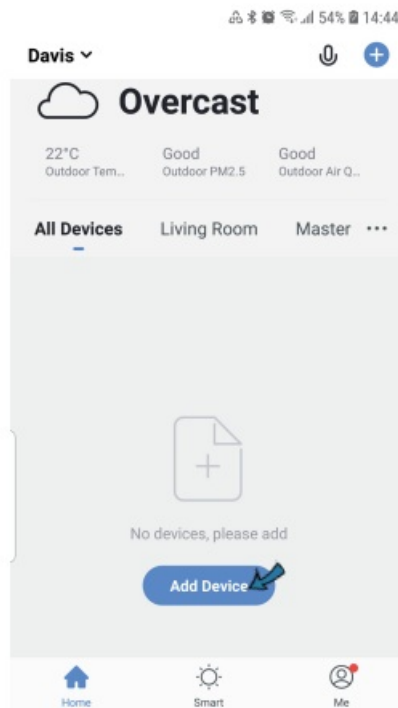


<https://smartapp.tuya.com/smartlife>

- Create an account with your mobile number and authentication code.

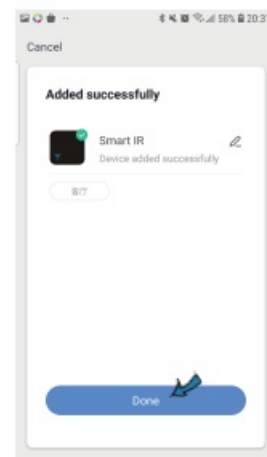
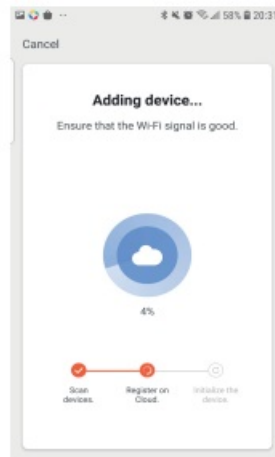
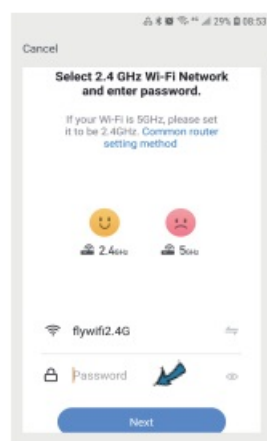
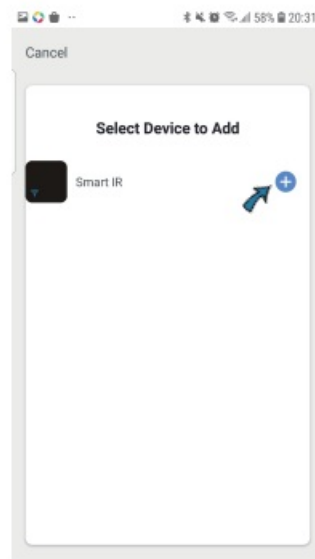
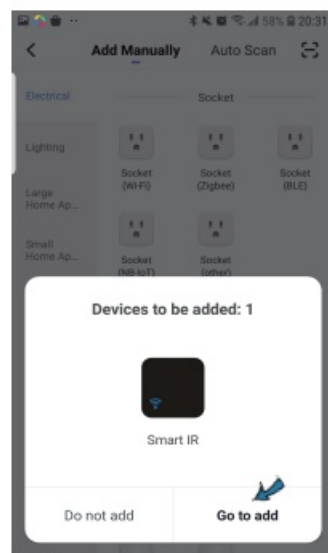
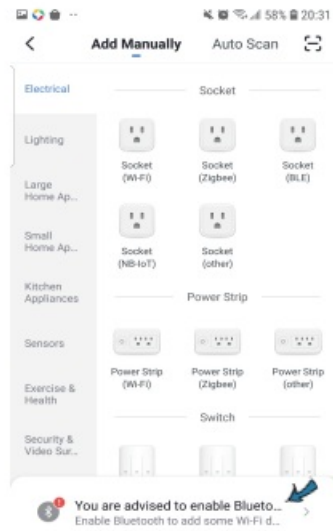


- Connect your mobile to your Wi-Fi router , supply power to the remote control with Micro charging cable, click “+” in the upper right corner of homepage or click “Add Device” .



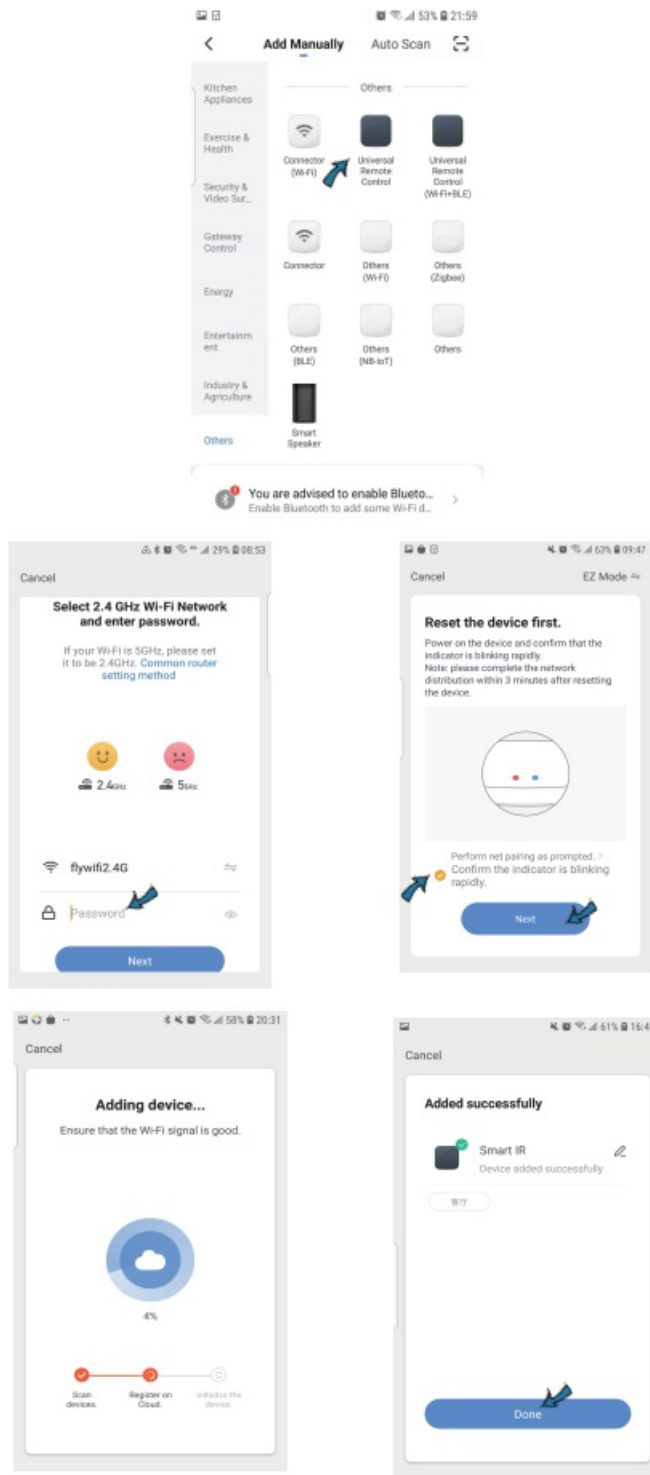
4. 1) Turn on the bluetooth in mobile:

The app will advise you to turn on the bluetooth in your mobile, then you choose the device to add. enter into your Wi-Fi name and Wi-Fi password, it will connect the network automatically.

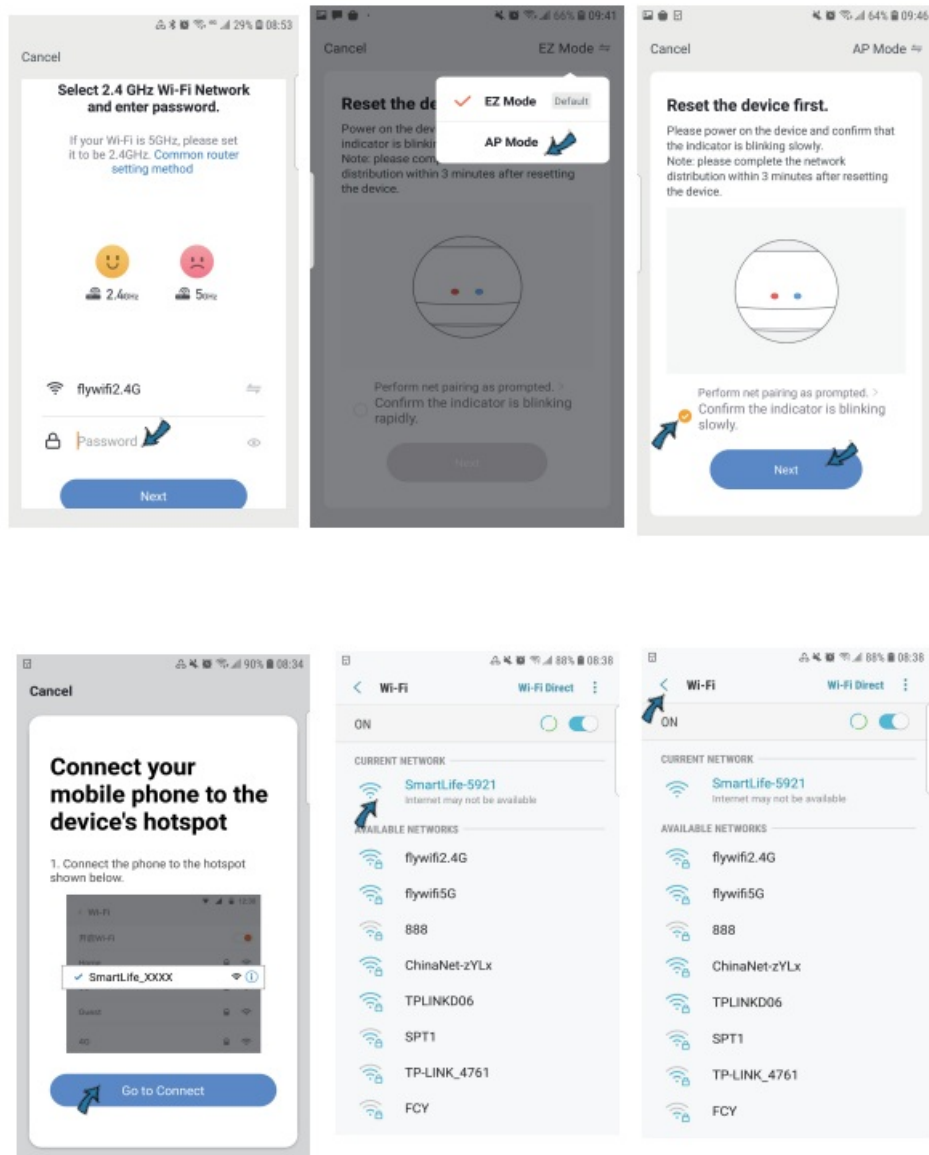


2) Do not turn on the bluetooth:

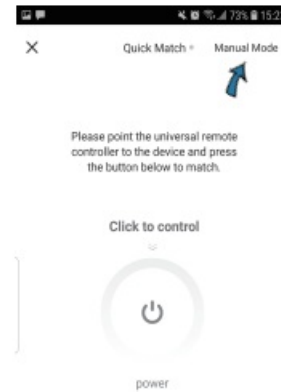
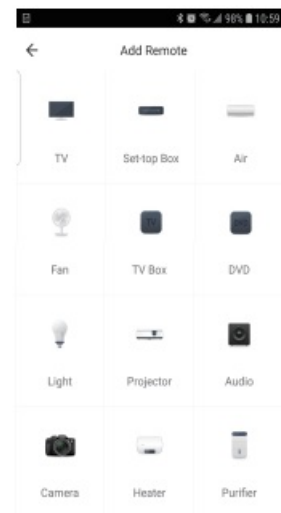
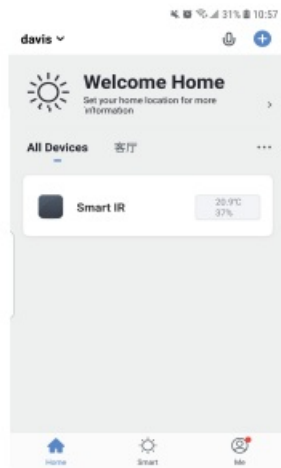
Select "Universal Remote Control " from "Others", enter into the Wi-Fi password, make sure the LED indicator is blinking rapidly, if not, please open the stand at the back, hold the reset button for about 5s till indicator blink quickly. it will connect .



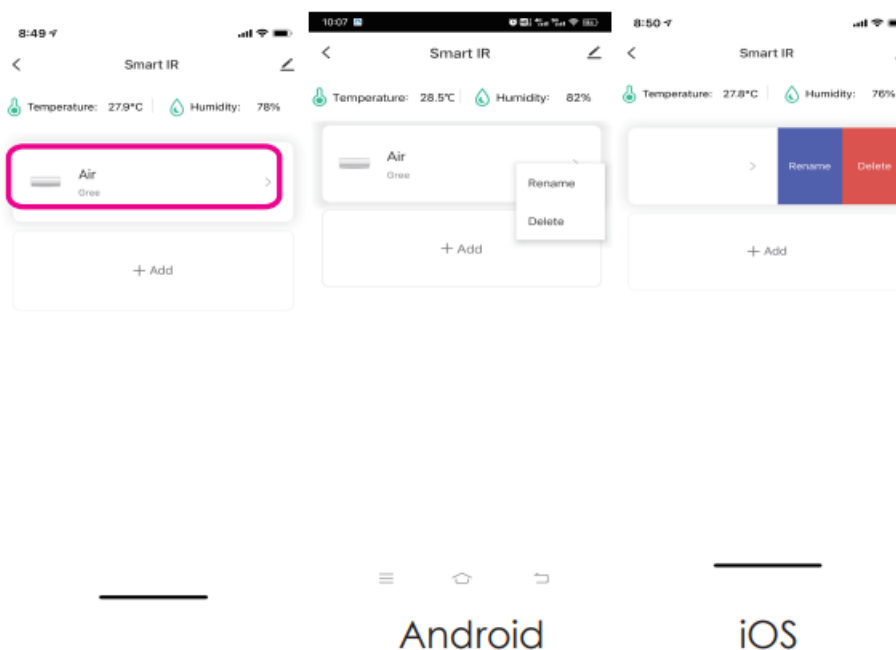
3) If your Wi-Fi router open both 2.4GHz and 5GHz with the same name, enter Wi-Fi password, please select “AP Mode”, hold the reset button for about 5 seconds till LED indicator blink slowly, connect your mobile to the device’s hotspot: “SmartLife-XXXX” , then click to return to App interface, it will connect to Wi-Fi router automatically,configuration complete.



5. Tap "Smart IR", then click "Add", select the device and its brand you need control, you can click "Quick Match" or "Manual Mode" to match the buttons, please match at least 3 buttons to check if the device reacts properly, if yes, then match completed, you can control the device.

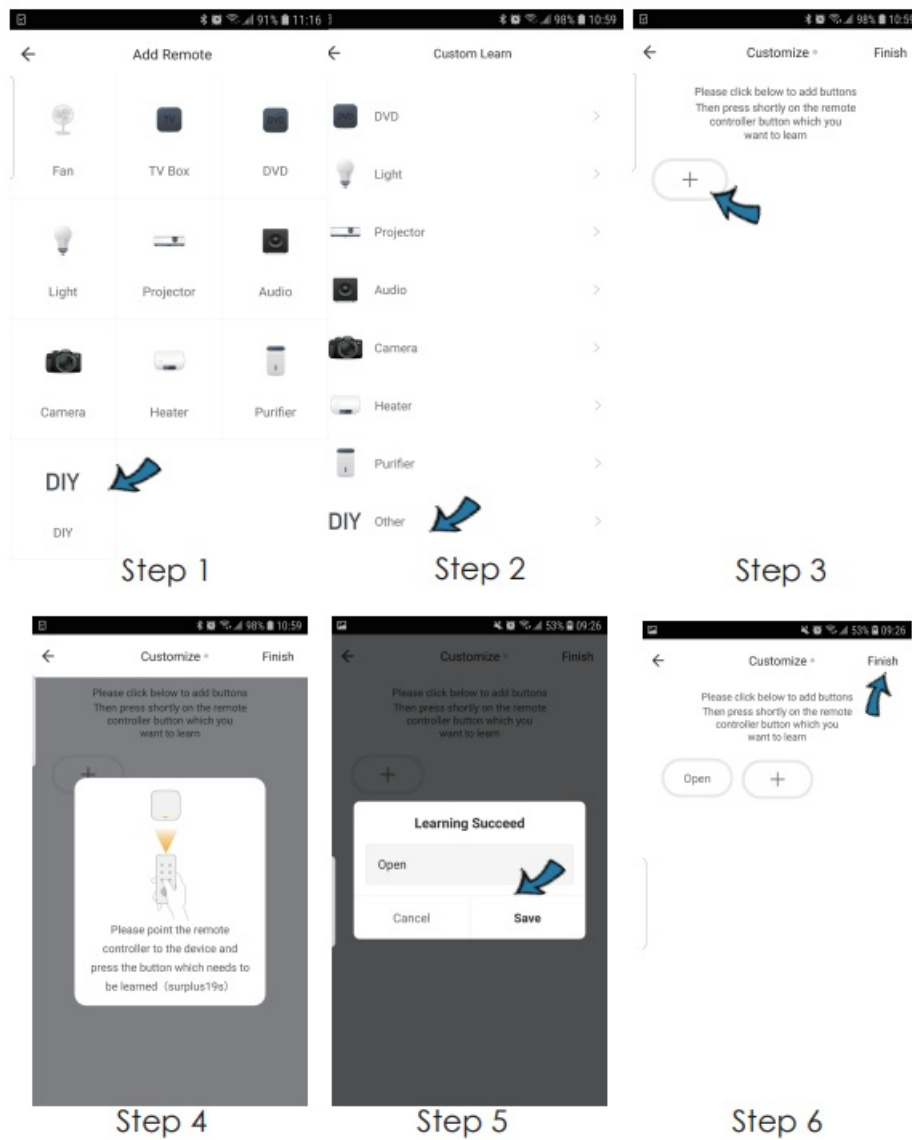


6. After adding the device, if you want to edit the device name, For Android, long press the box, it will pop up “Rename”, click it to edit. For iOS, slide the box towards the left, choose “Rename” to edit.



7. If you can not find the brand of the device in the brand list, you can choose “DIY” to learn the buttons of other brands’ remote control, so you can also control the device.





8. You can click “+” to continue to copy other buttons or click “Finish”

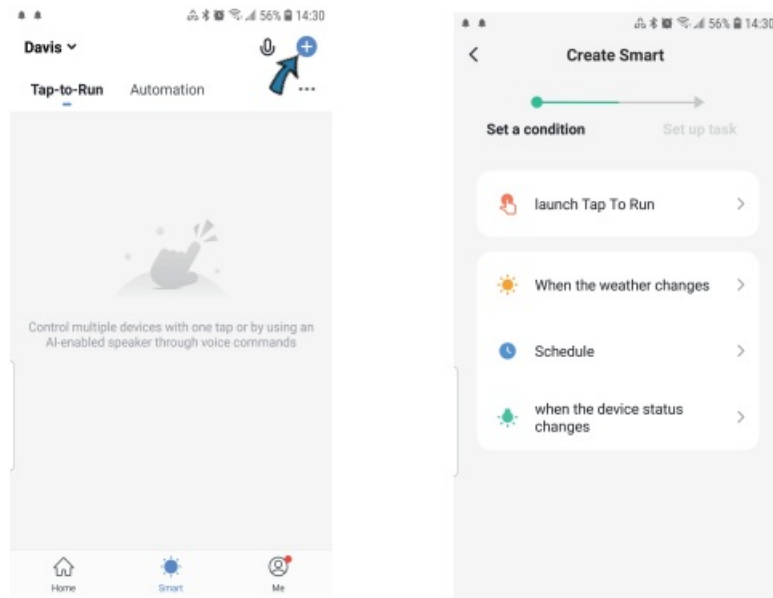
#### Notes:

1. It only support 38KHz frequency, if the IR remote unable to receive commands from the IR device, it is likely that the frequency of IR device does not match, unable to study commands.
2. DIY does not support voice control.

## Functions

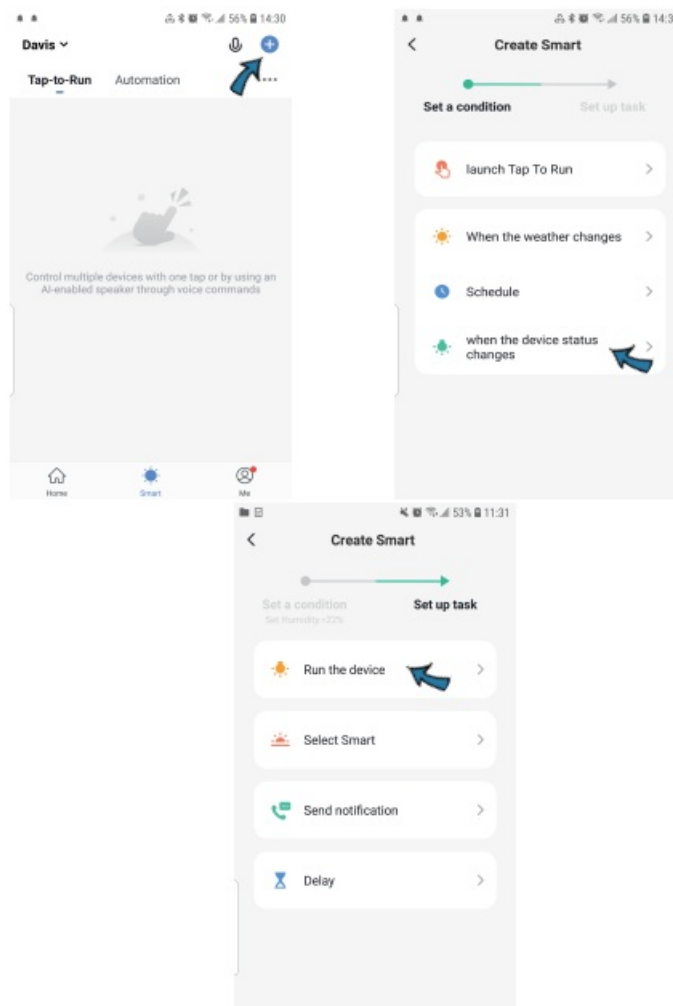
### 1. Customize Scenario

Create smart scenario for IR devices, click "Smart" page, then click" +" at the upper right corner to set conditions and tasks.



## 2. Intelligent Linkage

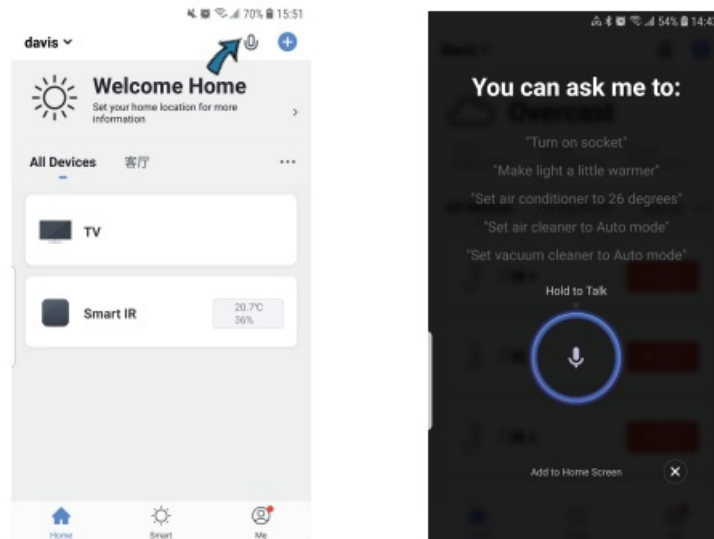
When the ambient environment change, you can execute intelligent linkage. For example, when the room temperature surpass 35°C, the air-conditioner will open automatically, or when the humidity lower than 20% RH, the humidifier will spray.



## 3. Remote control & Voice control

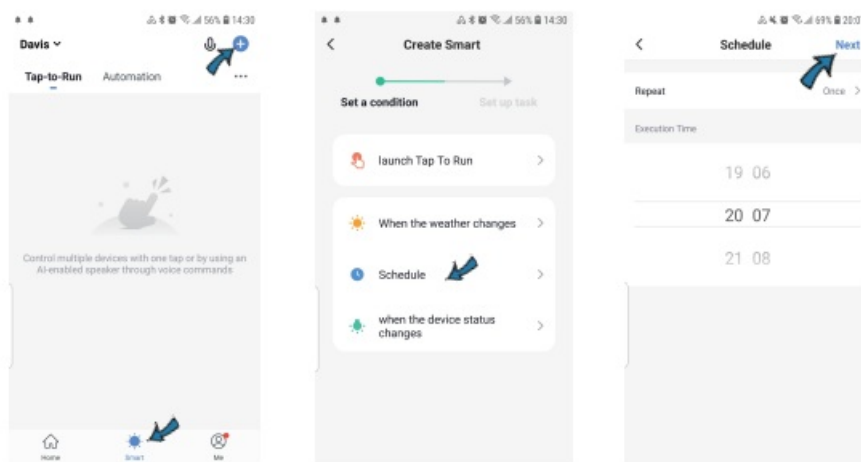
With all-in-one integration, you can control added IR devices remotely wherever you are at anytime on the mobile App. you can also click “ ” icon at the upper right corner, hold to speak your control commands for specific

devices.



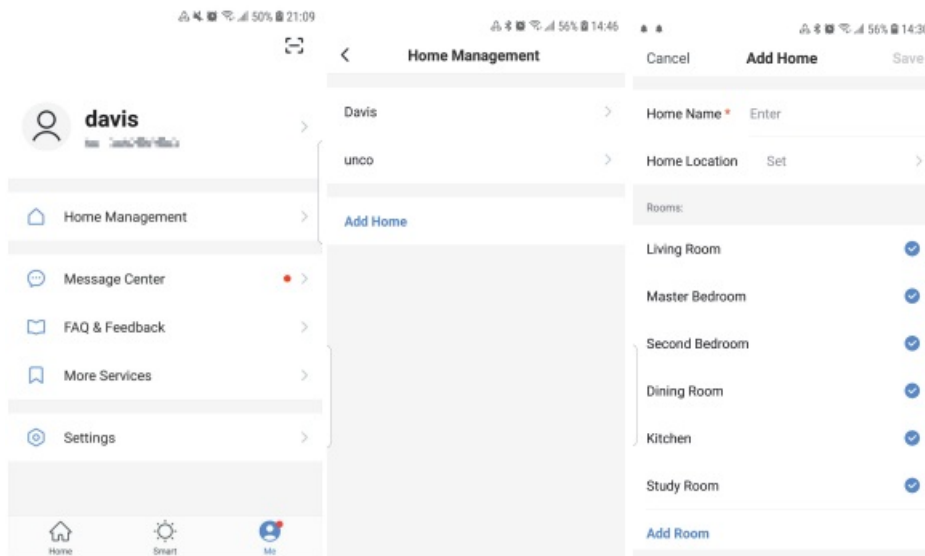
#### 4. Set Schedule

Select “Tap to Run” or “Automation” in “Smart” page, tap “+” to select “Schedule” to set power on/off for specific devices.



#### 5. Share devices

You can share your added devices with family members, so they can also control the devices.



## 6. Display on Screen

You can real-time monitor the temperature and humidity on the screen directly.

## 7. Temperature Unit Switch

You can switch temperature unit between °C and through press of the reset button once.

## 8. Third-party Voice Control

Works with amazon alexa and google assistant.

## FAQ

### 1. What devices can be controlled with IR remote?

– You can control TV, Air-conditioner, Fan, DVD, TV box, Light, Set-top box, Projector, Audio, Camera, Water Heater, Air purifier, etc.

### 2. Can i control devices through 2G/3G/4G network?

– Both IR remote and mobile device are required to share the same wifi network when adding the IR remote. After configuration done, you can control devices through 2G/3G/4G network. Currently it does not support 5G network.

### 3. What should i do when device configuration process fail?

– You can:

- 1) Check whether IR remote is powered on or not.
- 2) Check whether your mobile phone is connected to 2.4GHz wifi network.
- 3) Check your network connectivity, make sure the router is working properly.
- 4) Make sure the wifi password entered is correct.

### 4. The IR remote can go through walls or be used to control devices in upstairs/downstairs rooms?

– IR can not penetrate walls, so make sure there is no obstacle between IR remote and the IR devices.

### 5. We have Huawei/Xiaomi set-top box, why is it not connecting?

– There are two types of set-top boxes, OTT and IPTV the most obvious difference is that IPTV supports living streaming while OTT does not. please make sure you have matching TV box before set-up.

### 6. What should we do when we are unable to use IR remote to control device?

– Please check the following:

- 1) IR remote network in good condition (click any keys on the remote control panel in the app and see whether the indicator light starts flashing. if it flashes, it indicates to work properly.
- 2) There are no obstacles or barriers between the IR remote and the electric device .
- 3) The factory remote control of electric device is IR-enabled. (Cover the top of the IR remote with hand or any objects, then press any keys of the remote control, if the device does not response, it is IR based. Otherwise, it is bluetooth or RF based remote control.

## Documents / Resources



[tuya Smart IR Remote Control with Temperature & Humidity Sensor](#) [pdf] User Guide  
Smart IR Remote Control with Temperature Humidity Sensor, Smart IR Remote Control Sensor,  
Sensor, Temperature Sensor, Humidity Sensor, Remote Control Temperature Humidity Sensor