



# Tuya HD02TU07 WiFi Video Intercom System Instruction Manual

[Home](#) » [Tuya](#) » Tuya HD02TU07 WiFi Video Intercom System Instruction Manual 

## Contents

- [1 Tuya HD02TU07 WiFi Video Intercom System](#)
- [2 Product Information](#)
- [3 Product Usage Instructions](#)
- [4 Function](#)
- [5 Outdoor camera](#)
- [6 Packing list](#)
- [7 Installation diagram](#)
- [8 Schematic diagram of connect the lock](#)
- [9 Connect outdoor doorbell and indoor monitor](#)
- [10 Indoor monitor operation introduction](#)
- [11 App Download](#)
- [12 APP register & login](#)
- [13 Help and service](#)
- [14 Live video](#)
- [15 Motion detection and call push](#)
- [16 Documents / Resources](#)
  - [16.1 References](#)
- [17 Related Posts](#)



**Tuya HD02TU07 WiFi Video Intercom System**



## Product Information

The WiFi Video Intercom System is a comprehensive home security solution that allows you to monitor and communicate with visitors at your front door. The system includes a 7-inch or 10-inch indoor monitor, an outdoor doorbell with a 2-megapixel camera, night vision capabilities, and various features such as unlocking, recording, and network connectivity. The indoor monitor is equipped with a capacitive touch screen and can connect to multiple outdoor doorbells and other indoor monitors.

The system operates on a 2.4G WiFi network and can be controlled through the Tuya smart or Smart lift APP. It supports up to 20 app users, allowing you to talk to visitors, take photos or videos, monitor your front door, unlock the door, and store data on an external TF card. The system also features motion detection, push notifications, and video playback.

### Key Features:

- 2-megapixel camera with a 140-degree horizontal angle
- IR CUT technology for clear night vision
- Power on/off unlock with adjustable delay time
- 7-inch or 10.1-inch capacitive touch screen indoor monitor
- Connectivity for up to 2 outdoor doorbells and 6 indoor monitors
- 2.4G WiFi 802.11 b/g/n network connectivity
- 12V 2A power adapter shared between outdoor doorbell and indoor monitor
- External TF card slot for photo and video storage
- Tuya smart or Smart lift APP for remote control
- Motion detection and push notifications

## Product Usage Instructions

### Installation

1. Choose a suitable location for the outdoor doorbell, preferably at a height of 1.4 to 1.7 meters, and avoid direct

sunlight and rain.

2. Using screws or tape, securely fix the outdoor doorbell on a wall, wooden board, door, or an 86 box.
3. If installing on brick or concrete, use a drill bit to create three holes, one large enough to pass through the 4pin cable. Use anchors for added stability.
4. Remove the screws from the rain cover and separate it from the doorbell.
5. Pass the 4pin cable through the hole in the wall.
6. Fix the rain cover back onto the doorbell using two screws.
7. Plug the rain cover onto the doorbell and secure it with bottom screws.
8. Fix the hanging plate to the wall using two screws.
9. Insert a MicroSD card into the slot of the indoor monitor for video and photo storage.
10. Connect one end of the 4pin cable to Door1 or Door2 of the indoor monitor.
11. Connect the indoor monitor to a 12V 2A power adapter.
12. Hang the indoor monitor onto the hanging plate.

### Connecting the Lock

**Note:** The unlock voltage is 12V. Please check the power supply specifications before purchasing separately. Set the unlock delay time in the master indoor monitor.

Connect the lock to the indoor monitor using the following schematic diagram:

COM	NC	NO
COM	NC	NO
Power on		
Power off		

### Connecting Outdoor Doorbell and Indoor Monitor

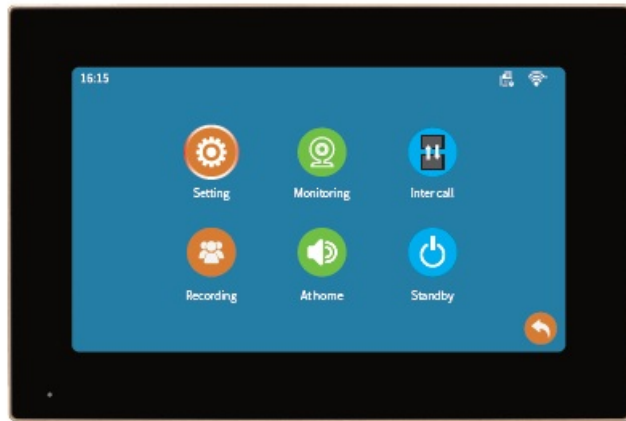
Connect the 4pin cable as follows:

- Door1: Connect one end of the 4pin cable to Door1 of the indoor monitor.
- Door2: Connect one end of the 4pin cable to Door2 of the indoor monitor.

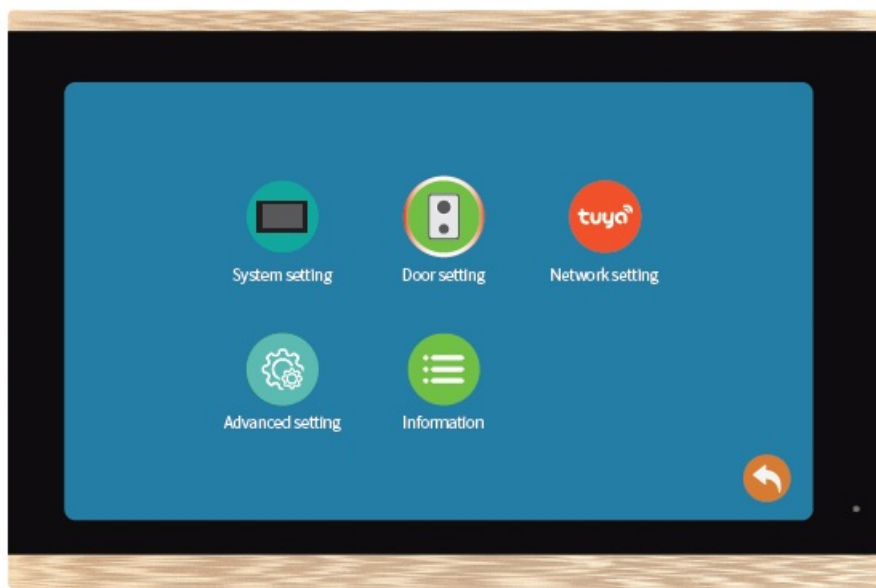
Connect the other end of the 4pin cable to the corresponding doorbell terminals:

- Doo1: Connect the other end of the 4pin cable to Door1 of the outdoor doorbell.
- Doo2: Connect the other end of the 4pin cable to Door2 of the outdoor doorbell.

Make sure to connect the power, data, ground, audio, and video cables correctly.



7inch indoor monitor



10 inch indoor monitor

## Function

### Outdoor doorbell

- Resolution: 2Mega pixels, 140 Horizontal angle
- Night vision: IR CUT no color deviation, B/W night vision
- Unlock: Power on or off unlock, unlock delay time setting by indoor monitor

### 7, 10.1 inch capacitive touch 1024\*600 indoor monitor

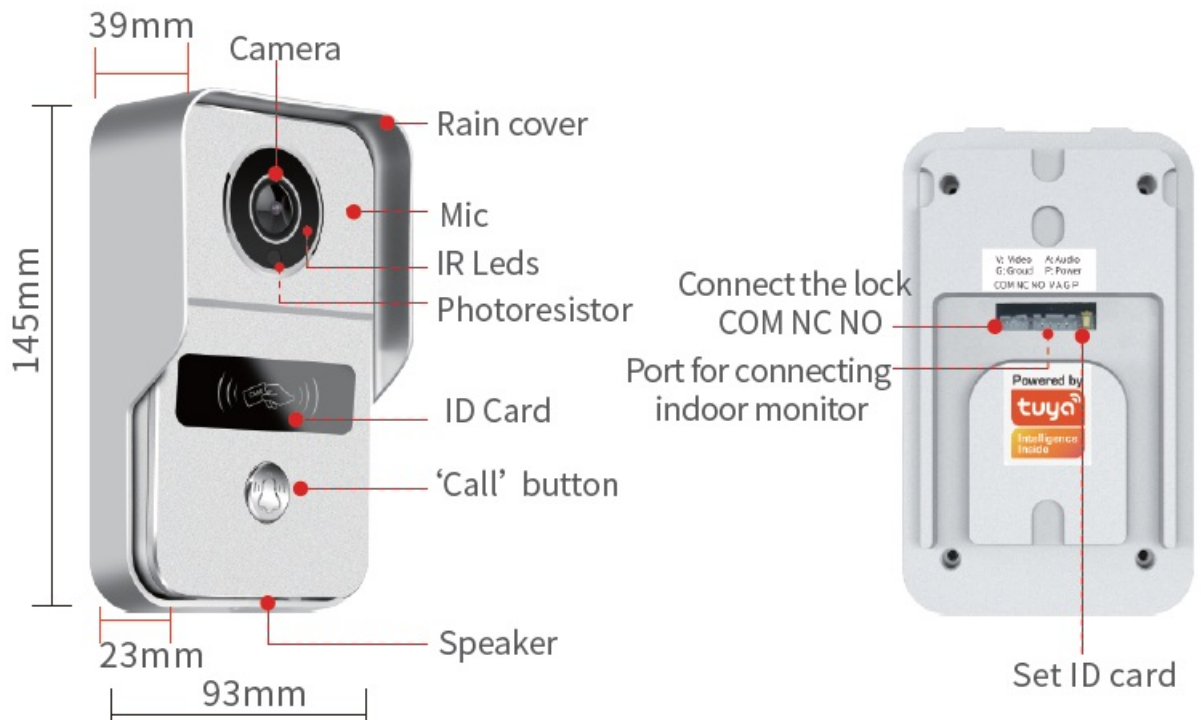
- Connect: Connect up to 2 outdoor doorbells and 6 indoor monitors, the indoor monitors can talk to each other
- Network: Master indoor monitor connects 2.4G WiFi 802.11 b/g/n
- Power adapter: Outdoor doorbell and indoor monitor share a 12V 2A power adapter
- Function: Take photo, take video, unlock, lock delay, motion detection calendar, adjust brightness, contrast, color

- TF Card: External TF card to save photos or videos, leave messages

## Tuya smart or Smart lift APP

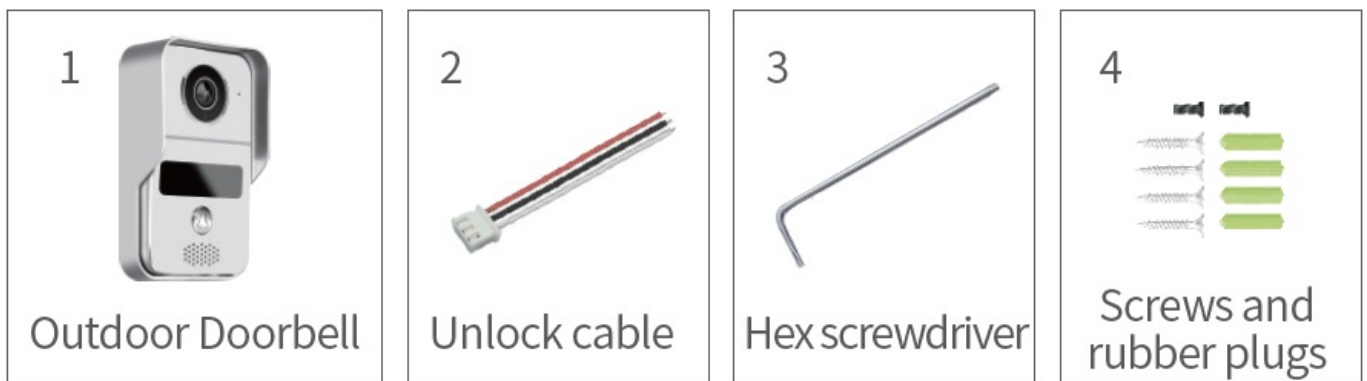
- Tuya APP: 20 App users connect to the system, users can talk to visitors anytime and anywhere, take photo or video, monitor, unlock, cloud storage
- Message: Push photo to APP when motion detection or call
- Playback: Video recording after the call or motion detection

## Outdoor camera



## Packing list

### Outdoor doorbell

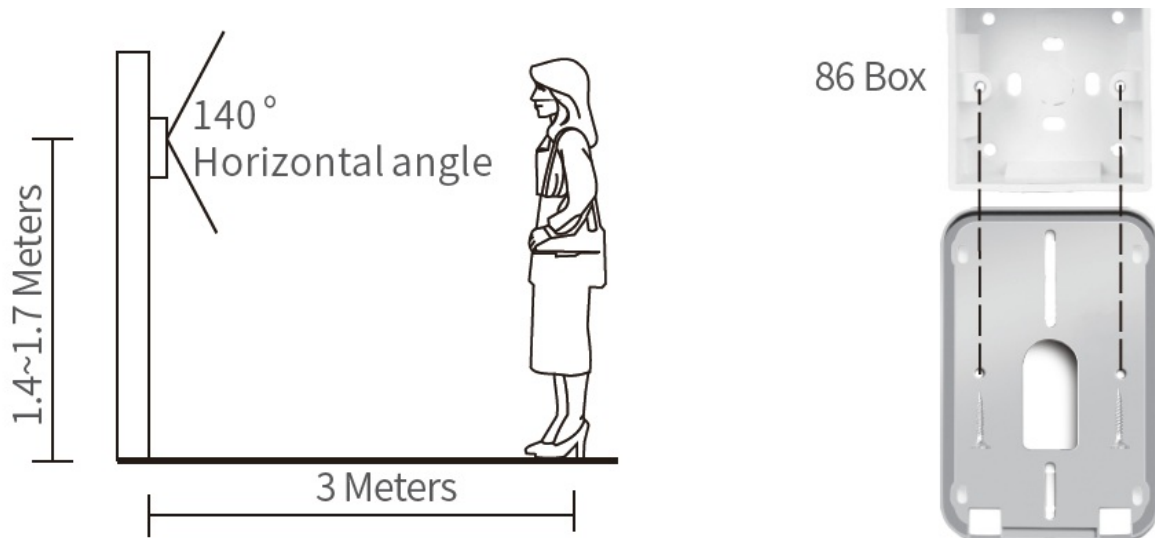


### Indoor monitor

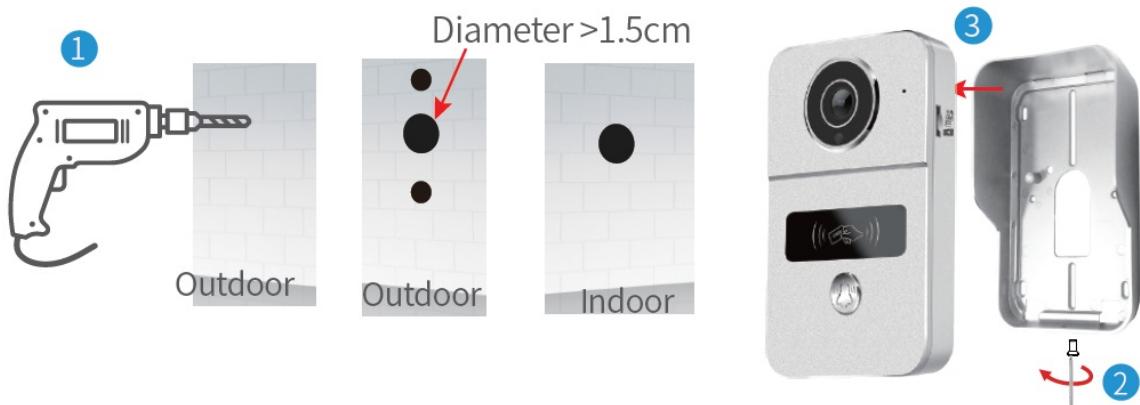


## Installation diagram

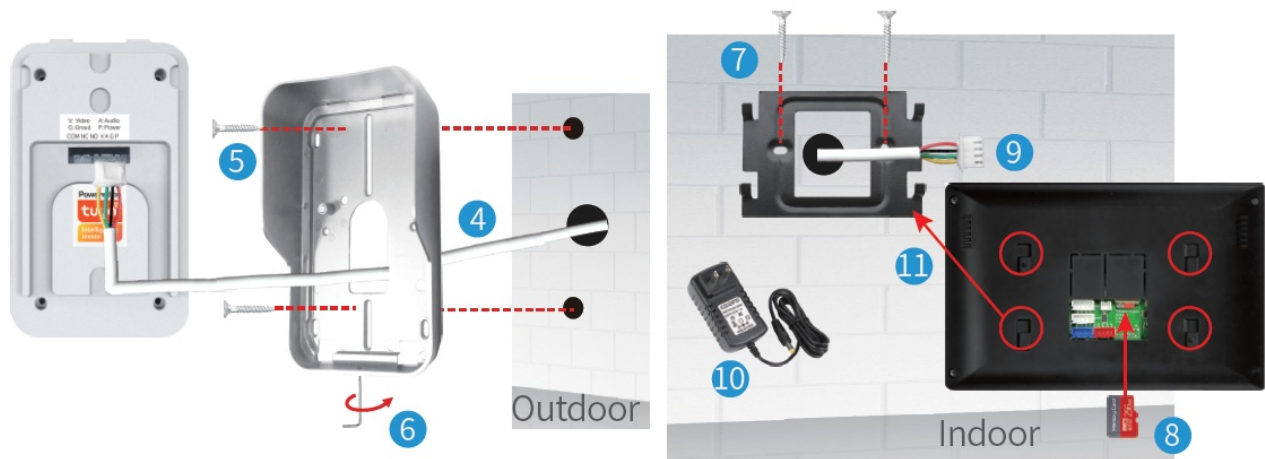
The outdoor doorbell is installed at a height of 1.4~1.7 meters, try to avoid the sunshine and rain, Using 2 screws or tape fixed the outdoor doorbell on the wall, wooden board, door, It can also be installed on the 86 box.



1. Use the drill bit to drill three holes. One hole is large enough to pass through the 4pin cable, use anchors if user install outdoor doorbell on brick or concrete.



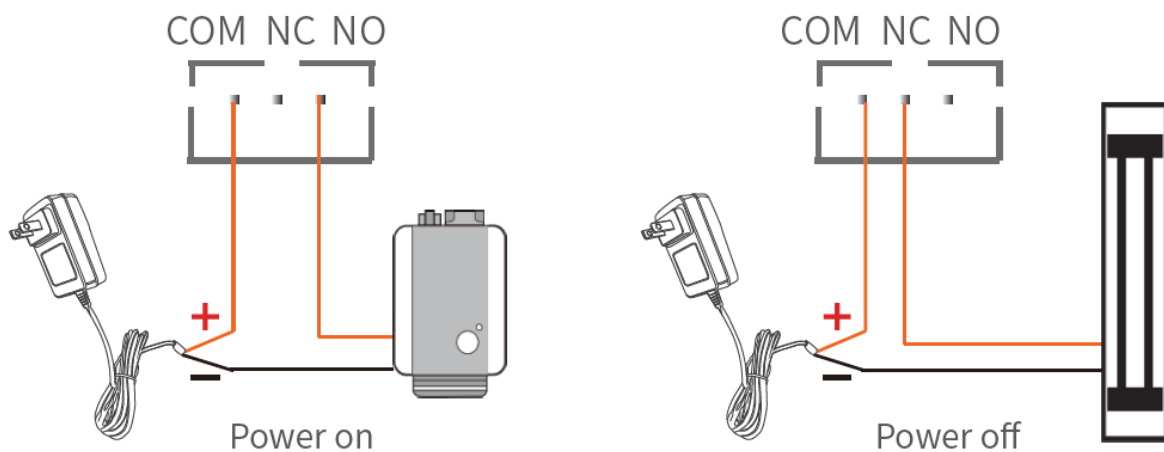
2. Remove the screws from the rain cover
3. The rain cover is separated from the doorbell



4. The 4pin cable goes through the hole in the wall
5. Fix the rain cover with two screws
6. Plug the rain cover on the doorbell and fix the bottom screws
7. Fix the hanging plate to the wall with two screws
8. Insert the MicroSD card to the slot of indoor monitor
9. Connect the other end of the 4pin cable to Door1 or Door2 of the indoor monitor
10. Connect the indoor monitor to a 12V 2A power adapter
11. Hang the indoor monitor to the hanging plate

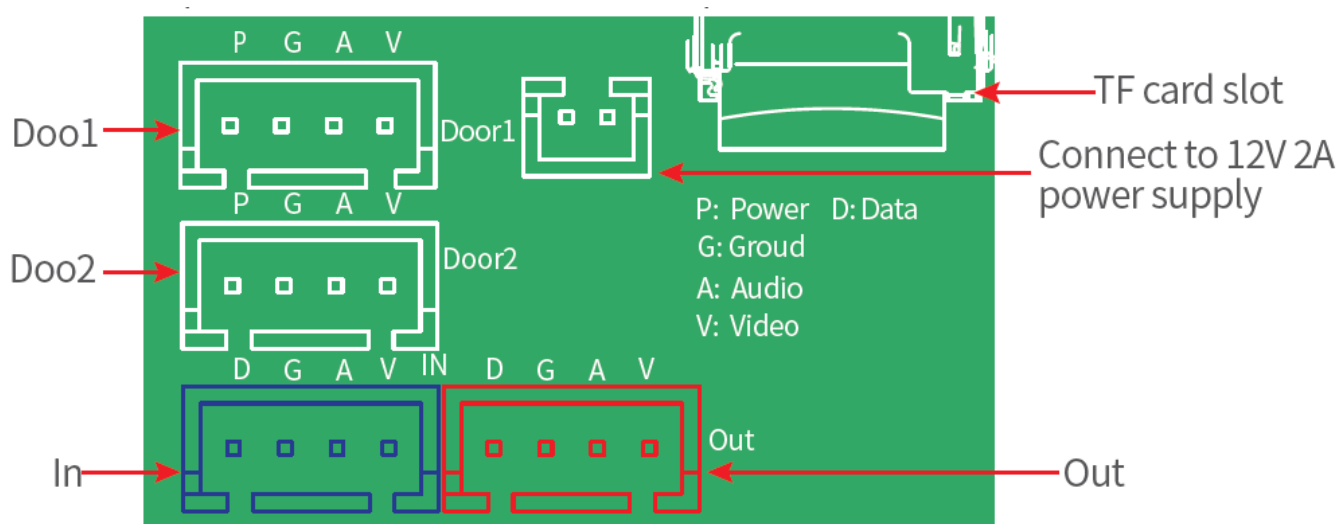
### Schematic diagram of connect the lock

**Note:** Unlock voltage is 12V. Pls check the ower supply specification to purchase separately. Please set the unlock delay time in the master indoor monitor.



### Connect outdoor doorbell and indoor monitor



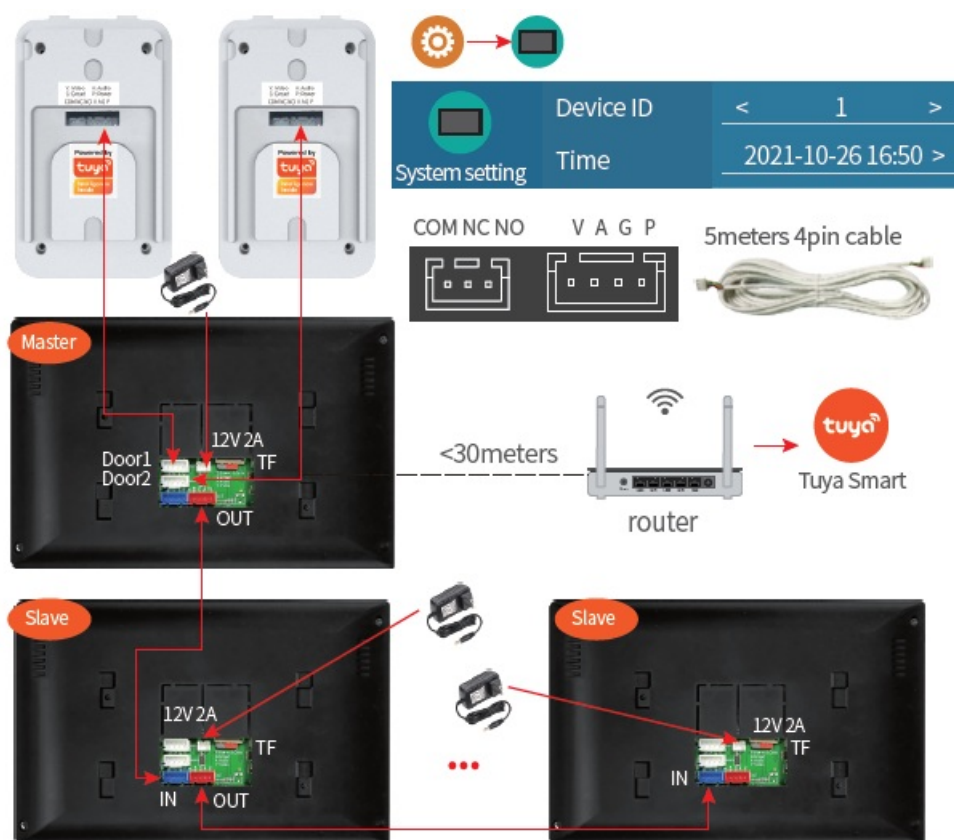


**In:** Connect the 4pin cable, the other end of the 4pin cable connects to the “Out” of the last indoor monitor  
**Out:** Connect the 4pin cable, the other end of the 4pin cable connects to the “In” of the next slave

1. The 4pin port of the outdoor doorbell same as that of the indoor monitor.  
 The other end of the 4pin cable is connected to “Door1” of the indoor monitor.  
 If there are two outdoor doorbell, the other outdoor doorbell is connected to “Door2”
2. Connect up to 2 outdoor doorbells and 6 indoor monitors.

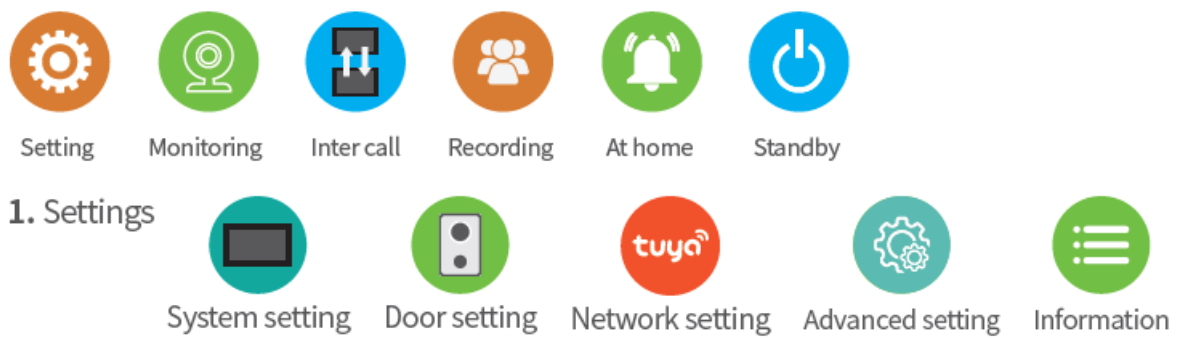
**Note:** Enter “Settings” -> “System Settings” of the indoor monitor, the device ID of the master indoor monitor connected to the outdoor doorbell is 1.

The slave indoor monitors are sequentially set to 2, 3, 4, 5, 6.



## Indoor monitor operation introduction





### System setting

**Device ID:** Master indoor monitor setting connected to outdoor doorbell Master indoor monitor ID setting to 1. ID of slaves are setting sequentially 2, 3, 4, 5, 6.

**Standby clock switch:** on/off

**Language:** English, Russian, French, Spanish, German and Simplified Chinese

**Key tone:** on/off

**Ring back:** on/off

Network setting (Can only be set on the master indoor monitor)

The master indoor monitor is connected to 2.4G WiFi, include “EZ Mode” and “AP Mode”, for specific operations, please refer to “9 Add Device” below.

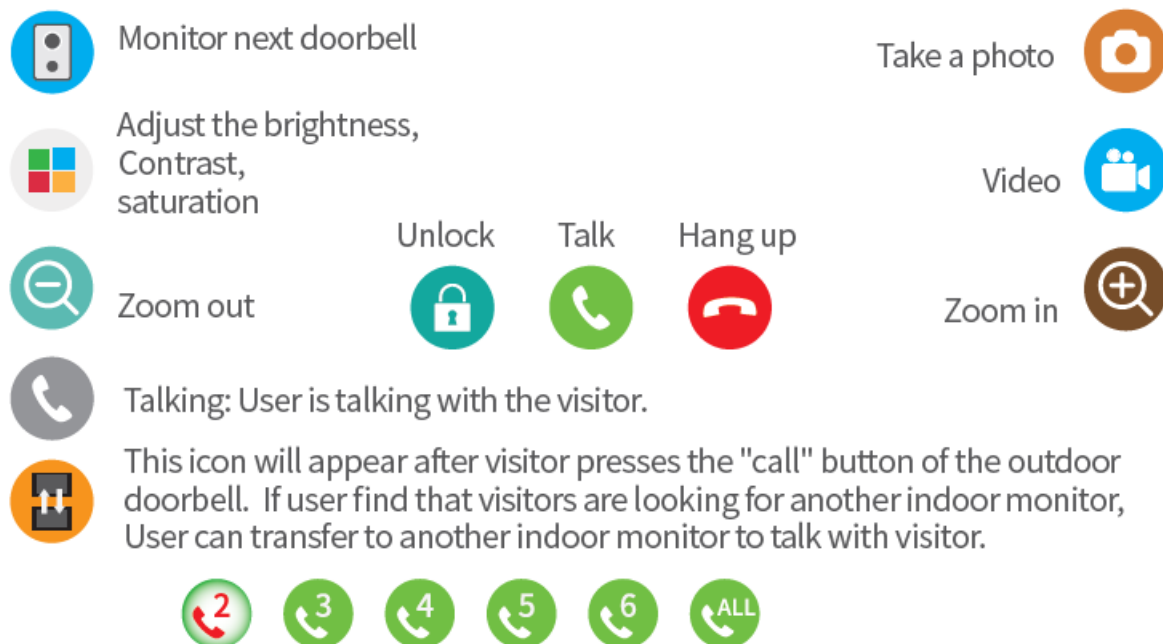
### Advanced settings

Format SD disk, Factory Settings, Software upgrade, restart system.

### Information

Software version, Release date, SD remain space, UUID

Click “Monitoring” button or after visitor presses the “call” button of the outdoor doorbell.



After clicking “Inter call”, user can call other indoor monitor.



Click “Recording” to display the record of call, message, Motion. Short press the file to play video or browse the photo, long press to select “Delete”, “All delete”, “all read “.



### Working modes

**Note:** The indoor monitor needs to insert the TF card and the message is enabled.

**At home:** After the visitor presses the “call” button, the indoor monitor rings, T ya APP will receive the call or receives the push, and if the call is not Answered, outdoor doorbell will prompt to leave a message.

**Not at home:** After the visitor presses the “call” button, the visitor will be prompted to leave a message, Tuya APP will receives the push.

**Dormant:** When calling, neither the outdoor doorbell nor the indoor station have ringtones or prompts, the APP will receive the call.

### Door settings

**Note:** Below setting by the main indoor monitor, the slave synchronizes the settings.

**Enable switch:** Please check whether the outdoor doorbell is connected. If only one outdoor doorbell is connected, please turn off the enable of the unconnected outdoor doorbell.

**Unlock delay** Set the time of close lock.

**Record mode:** Take video or photo when visitor calls or motion detection is triggered.

**Motion detect switch:** Motion detection enabled or disabled.

**Motion detect sensitivity:** low/medium/high

**Motion detection duration:** After triggering motion detection, set the recording time

**Message switch:** Turn on/off the leave a message.

**Message time:** Set the leave a message time.

**Signal mode:** PAL/NTSC/Automatic

**Signal type:** The outdoor doorbell is AHD1080, if user connect to other analog outdoor The outdoor doorbell is AHD1080, if user connect to other analog outdoor doorbells, please select the signal format Select automatic detection, so that the door phone can be used normally.

Support AHD1080A/HD720/TVI720/TVI1080/CVI720/CVI1080/CVBS.

**Ring setting:** Can setting by slave indoor monitor

Set the ringtones for 3 time periods, the ringing time of the ringtone, choose one of 10 ringtones, Ringer volume 0~10



### App Download

1. Search “Tuya Smart” or “Smart life” from APP store or Google Play according to phone system.
2. Scan the QR code below to download.



## APP register & login

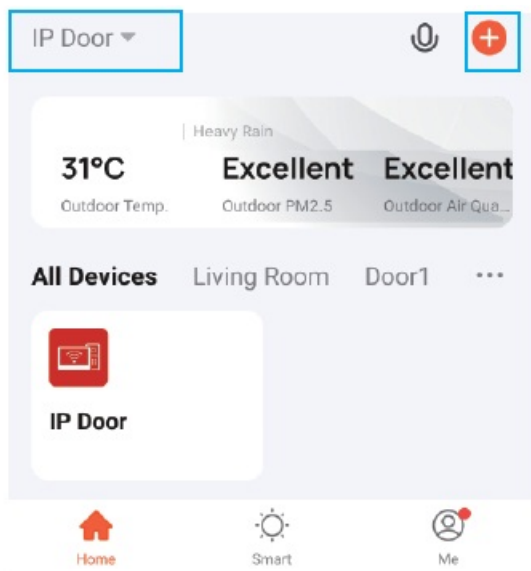
1. Please register when using APP for the first time.
2. After logging on the APP, please add devices after creating a family.  
At the bottom right corner of the APP homepage, click “Me” -> “Home Management” -> “Create a home”, fill in the information and save it. The user who adds the device will become the family owner and can set the family owner or general members .
3. After the home owner adds the device, the home members will add the device automatically. After adding this doorbell, all home members have unlock function than shared accounts.  
User can add 20 administrators or home members.
4. The video doorbell is a device with a higher security level, the device Master indoor monitor to APP

**Note:** only the master can connect to the Tuya Smart APP, the slave cannot be connect. Click “Settings”  to enter the network setting  . Indoor monitor has two network pairing modes 1. EZ Mode 2. AP Mode

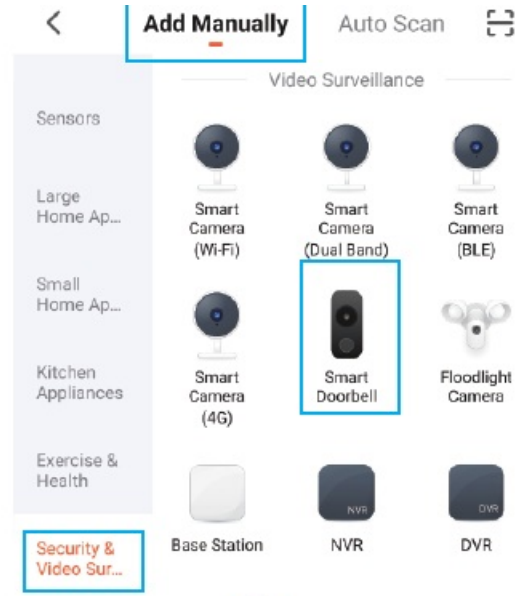
Network pairing Mode	< EZ Mode >
Cloud services	Unconnected
IP address	
MAC	f0:c8:14:d0:a6:08

Network pairing Mode	< AP Mode >
Cloud services	Unconnected
WIFI Hotspot	
Password	

1. Click “+” on the top right of the homepage.
2. Select “Add Manually”->”Security & Video Surveillance” -> “Smart Doorbell”.



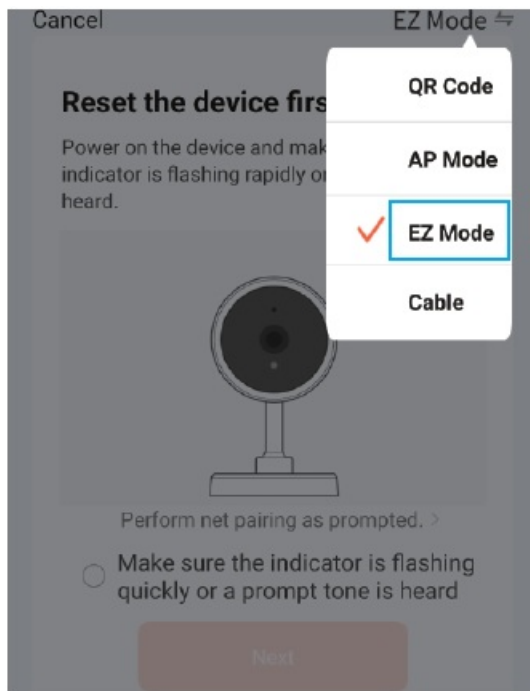
1



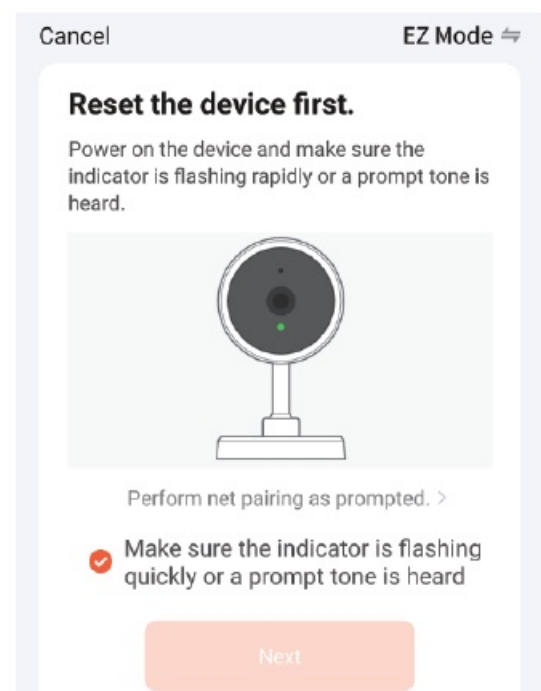
2

3. Select item 3 “EZ mode”

4. Confirm that the indoor monitor is in the network configuration mode, check it, and click “Next”.



3



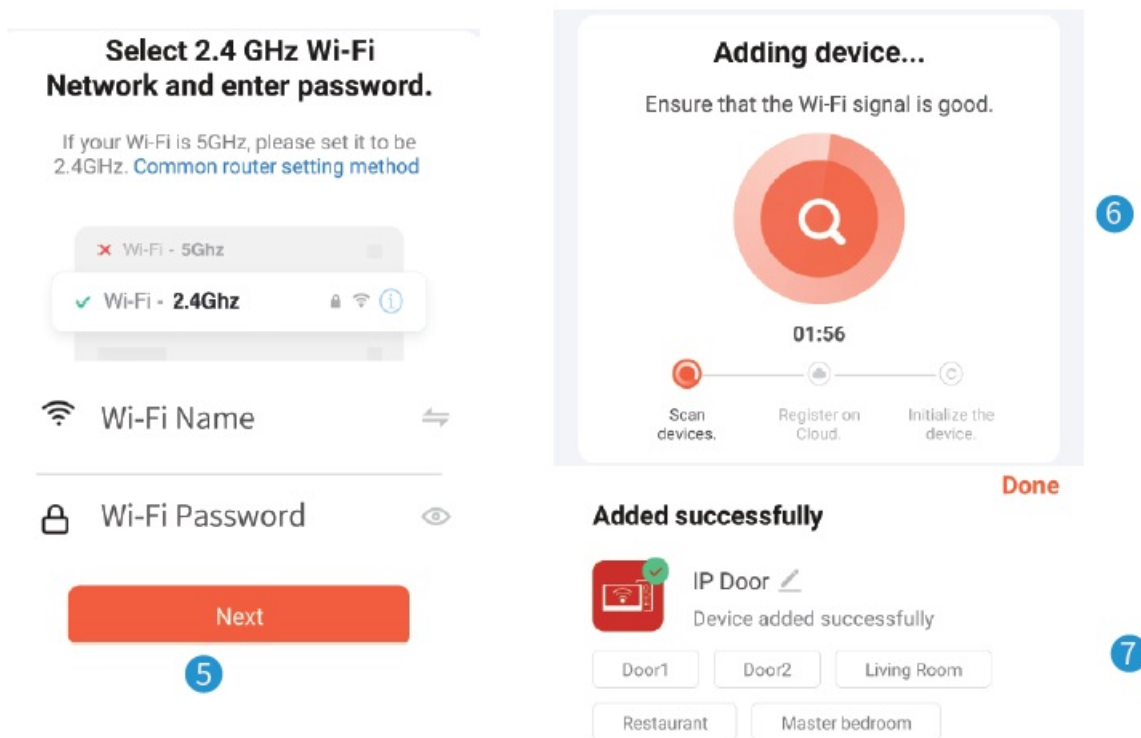
4

The indoor monitor only connect 2.4G WiFi, cannot connect 5G WiFi signal!


5. Select the 2.4GHz WiFi to be connected, enter the WiFi password then click “Next”.

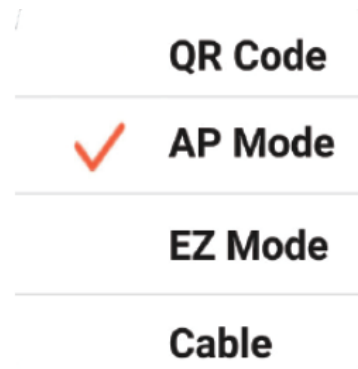
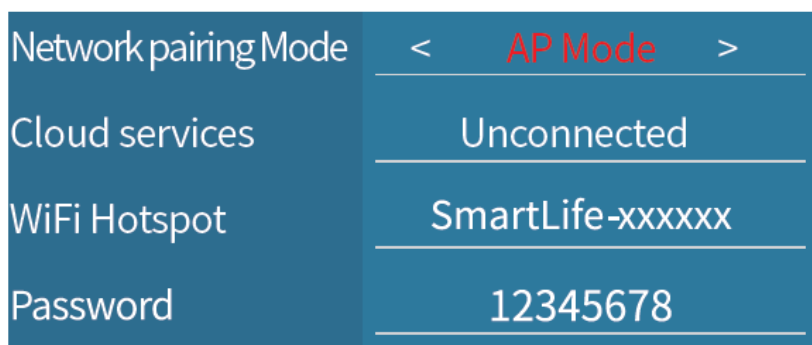
6. Enter the “Adding device...” then “Scan devices.” -> “Register on Cloud.” -> Initialize the device.”, Wait for about 1 minute.

7. It shows that the added successfully, user can modify the device name, and click “Done” to finish the adding the device.

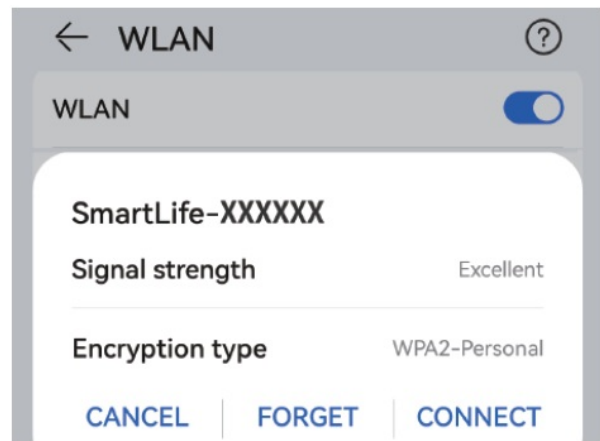
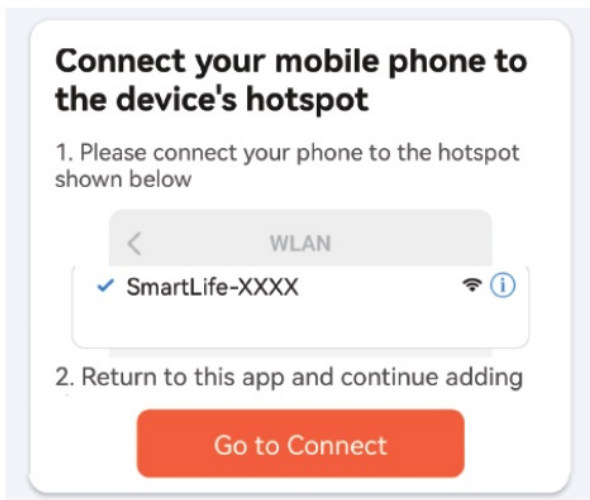


## AP Mode

Select "AP Mode" then click the "return"  con, the indoor monitor will restart system, and then return to the network setting interface, will display hotspot SmartLife-XXXXXX, the password is 12345678.



1. Click "+" on the top right of the homepage.
2. Select "Add Manually"->"Security & Video Surveillance" -> "Smart Doorbell".
3. Select the second item "AP Mode"
4. Check this check box and click "Next".
5. Select 2.4GHz WiFi, enter the WiFi password, and click "Next".
6. Click the "Go to Connect" icon.
7. Connect to the SmartLife-XXXXXX hotspot, enter the password "12345678", Click the "Back" icon in the upper left corner to return to the APP.

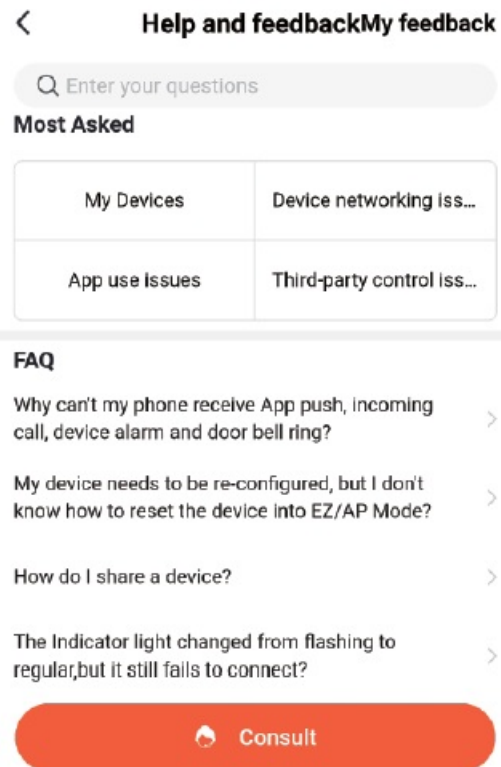
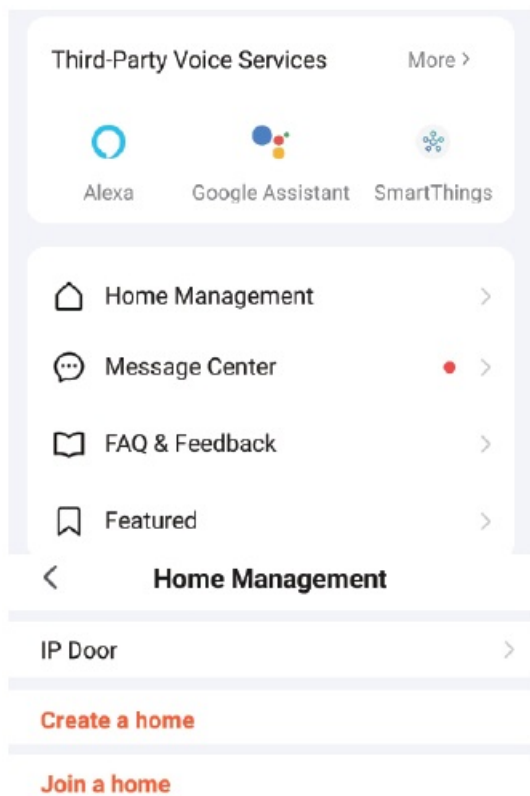


8. Enter the “Adding device...” then “Scan devices.” -> “Register on Cloud” -> “Initialize the device”. This process takes about 1 minute.
9. It shows that the added successfully, user can modify the device name, and click “Done” to finish the adding the device.

## Help and service

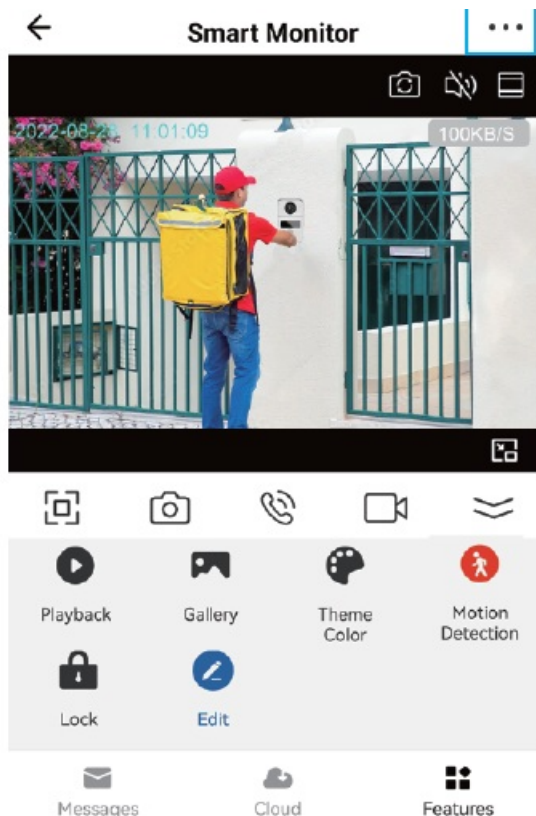
Users can click “Me” of homepage on the APP to enter “service and help”.

1. “Voice third-party service”, user can choose multiple smart product voice control products, each third party, the third-party service have detailed connection tutorials.
2. “Home Management” can create a home or join a home and set permissions.
3. Message Center” can view alarm information.
4. If user are not familiar with the app or device, pls check “Help and Feedback”.



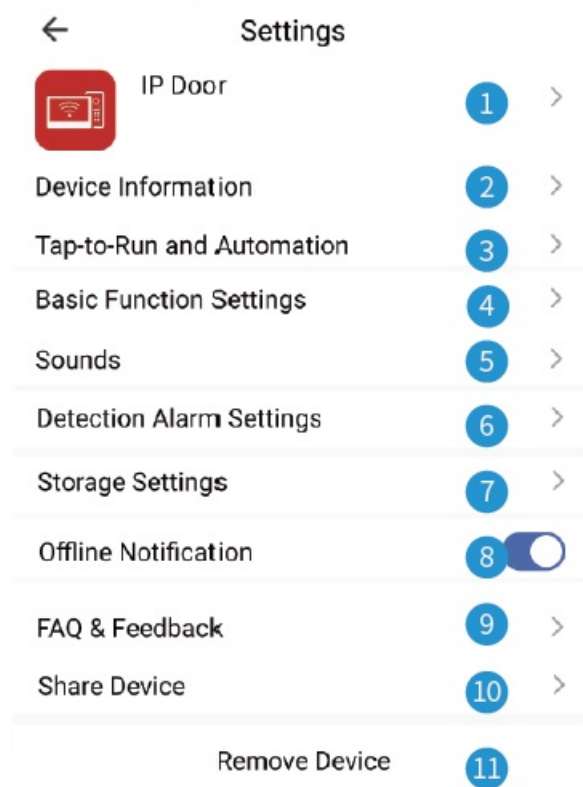
## Live video

Click on the device on the homepage of APP to enter the living screen, user can take photos, talk, video, unlock, playback(stored in the MicroSD Card), and view albums.



Unlock: Unlock and save all records.

Click the button in the upper right corner to enter the setting interface.



**Message:** Take photos and videos during incoming calls or motion detection.



**Cloud:** The photos and videos stored in the cloud server during incoming calls or motion detection, do not worry about losing the doorbell.

1. Modify icon, name, location of device.
2. View IP address, ID, time zone.
3. Configure the device automation.
4. Turn on/off the light of the doorbell button 2 The screen horizontal mirroring.
5. Adjust the volume of the doorbell.
6. Motion detection on/off, set the alarm sensitivity and the alarm time period.
7. Check the capacity of the memory card, and format the memory card.
8. The device will push the alarm information list to the APP after 30 minutes
9. Please check the common problems carefully.
10. Enter the mobile phone number or email address of the user you want to share, click "Finish", the shared user cannot unlock.
11. After removing the device, the device will not be displayed on the device list. Connect this doorbell to the computer in Europe <https://protect-eu.ismartlife.me>, Connect this doorbell on the computer side of the United States <https://protect-us.ismartlife.me>, The PC can talk, take pictures, and video.

## Motion detection and call push

1. After the visitor presses the call button, push notifications online.
2. The mobile phone standby state is pushed notifications as follows.



Tuya Smart 1m



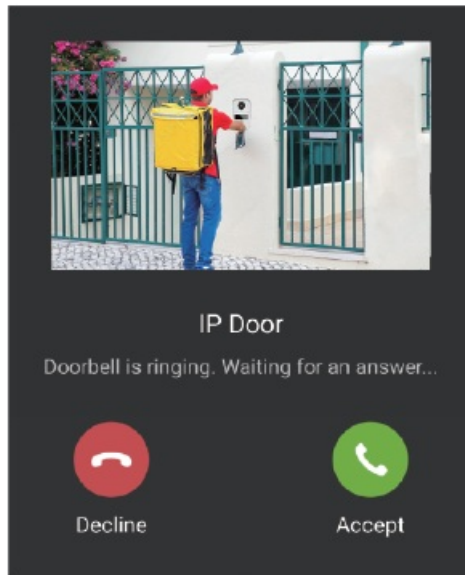
Doorbell

### Motion detected

IP Door has detected movement

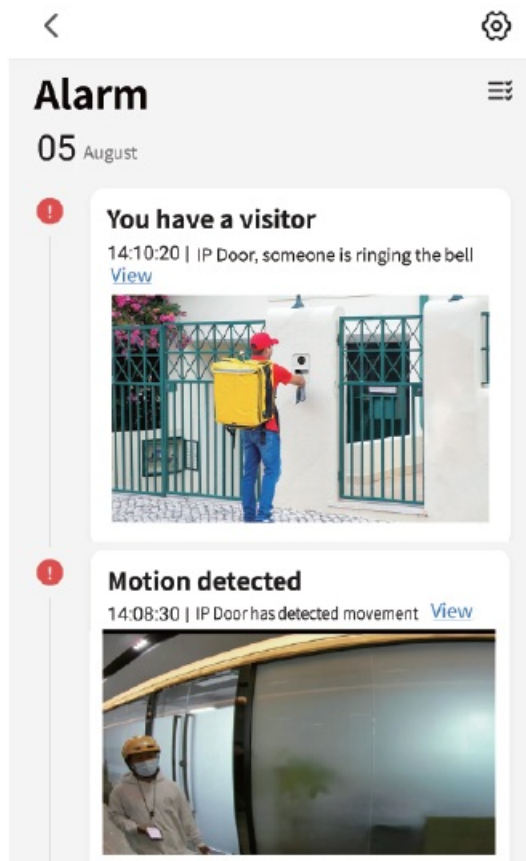
### You have a visitor

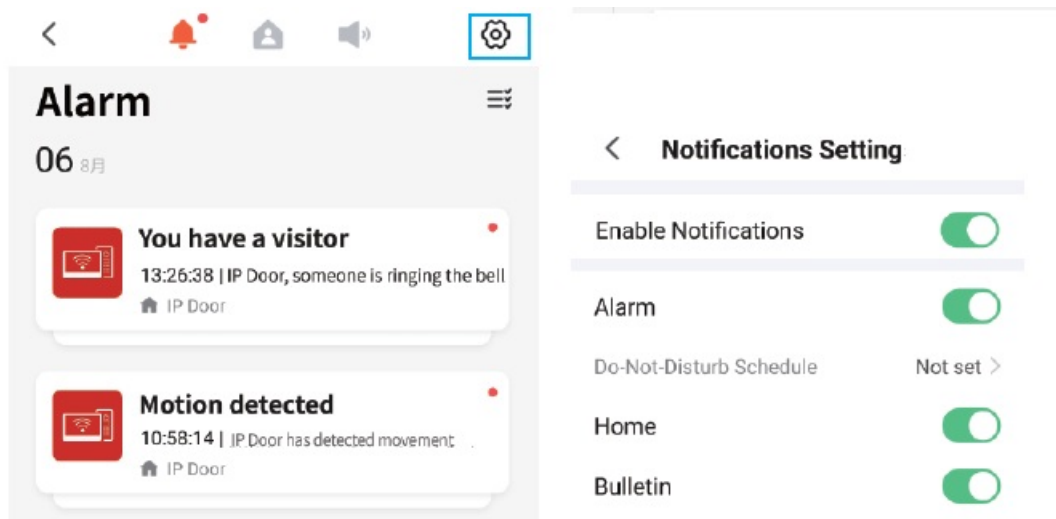
IP Door, someone is ringing the bell




Click the “Settings” icon in the upper right corner to enter the notifications push settings

- Click the “Motion detected” to enter the alarm message
- Click the “You have a visitor” to enter the living video.





## Documents / Resources

	<p><a href="#">Tuya HD02TU07 WiFi Video Intercom System</a> [pdf] Instruction Manual HD02TU07, B0C5WT3CSC, B08XWN2LLH, B0BZPVSVPB, B1vcKRf8mL, HD02TU07 WiFi V ideo Intercom System, WiFi Video Intercom System, Video Intercom System, Intercom System, System</p>
---	---

## References

- [protect-eu.ismartlife.me](https://protect-eu.ismartlife.me)
- [protect-us.ismartlife.me](https://protect-us.ismartlife.me)