



ECB-01 Emergency Call Button



tuya ECB-01 Emergency Call Button Instructions

[Home](#) » [Tuya](#) » tuya ECB-01 Emergency Call Button Instructions 

Contents

- 1 tuya ECB-01 Emergency Call Button
- 2 Product Usage Instructions
- 3 Appearance Introduction
- 4 Preparation before connecting to the APP
- 5 Connect to mobile app
- 6 Alarm push notification
- 7 Multi-person sharing
- 8 FAQs
- 9 Technical specifications
- 10 Documents / Resources
 - 10.1 References
- 11 Related Posts



tuya ECB-01 Emergency Call Button



Specifications

- Standby current: 0.1pA
- Average current: 12mA
- Internal battery: polymer battery 3.7V 400mAh
- Charging duration: Less than 1 hour
- Wi-Fi: 2.4G 802.11 B/G/N

Product Usage Instructions

Preparation before Connecting to the APP

1. Download the Tuya Smart or Smart Life app from the application market.
2. Scan the QR code or search for the app to download.
3. Choose either app as their usage is similar.

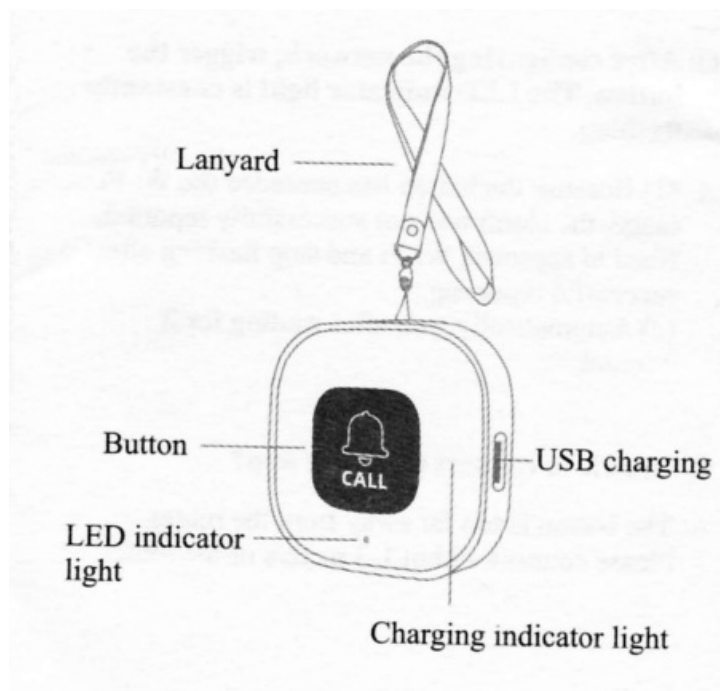
Connecting to Mobile App

- Connect your phone to Wi-Fi (2.4G) and turn on Bluetooth.
- If there is no SIM card, press and hold the button for 10 seconds until the LED indicator light flashes slowly.
- Wait for the configuring network status process which takes about 2 minutes.
- Discover devices and make sure your device is detected.

Adding Device Manually

1. Enter Wi-Fi information and password in the app.
2. Wait for a successful connection as indicated by the LED light.

Appearance Introduction



Preparation before connecting to the APP

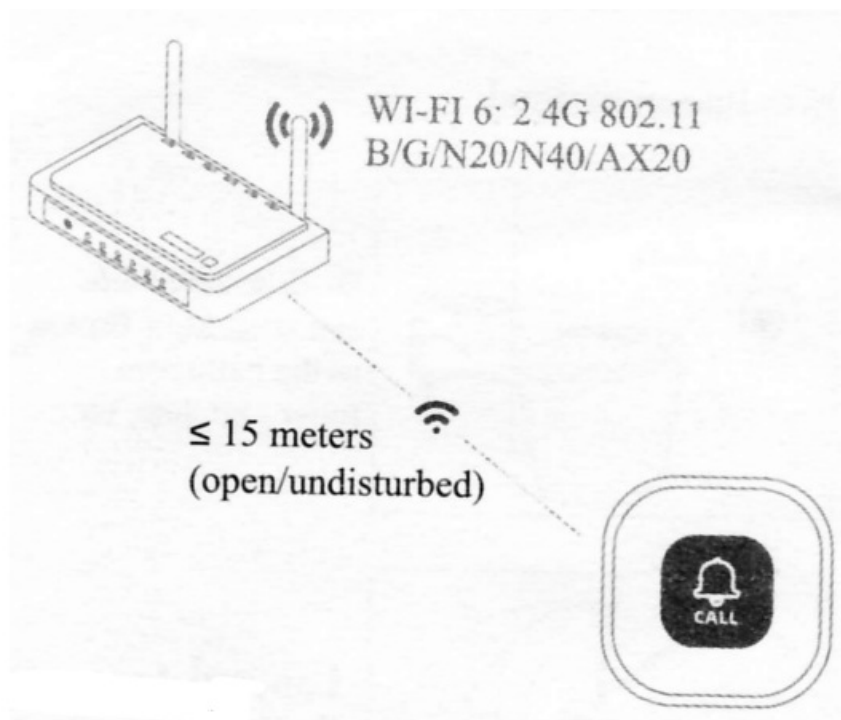
Download APP



- Scan the QR code to download.
- Please search for "Tuya Smart (Smart Life)", in the application market to download.

The usage of the two apps is similar, just choose one of them.

Configuration network considerations



Warm prompt

The distance varies with the environment. If the button is too far from the router, it will not be able to connect to the phone.

Connect to mobile app

1. Connect your phone to Wi Fi (2 4G) and turn on Bluetooth.



2. Enter the configuration network state.

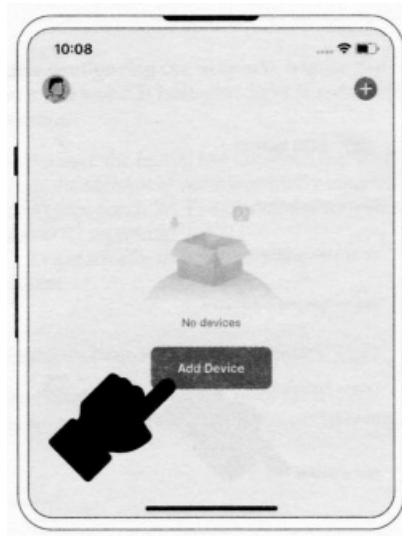


Press and hold the button for 10 seconds, and the LED indicator light will slowly flash.

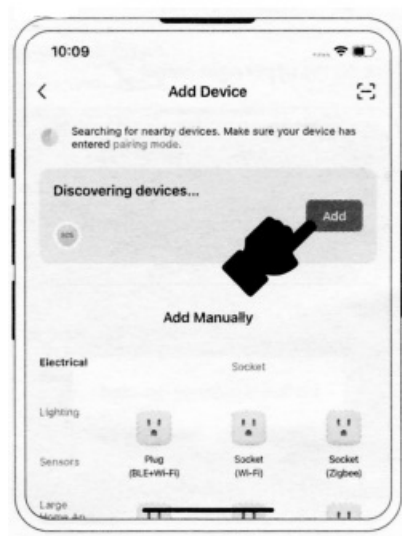
Warm prompt

The duration of configuring network status is 2 \minutes.

3. Open the app and click on “Add Device”.



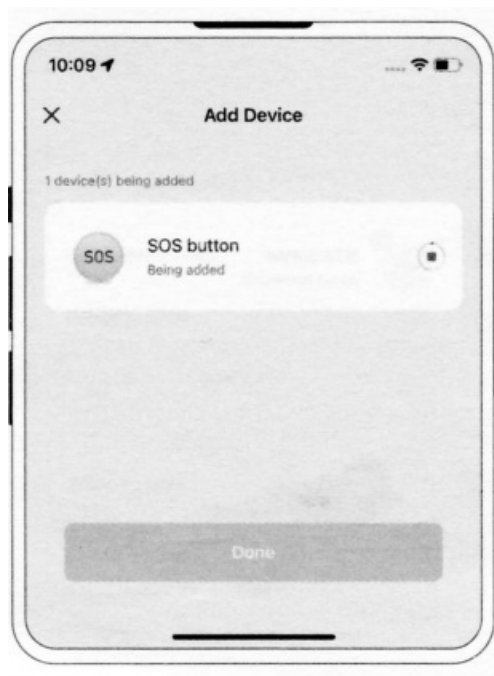
4. After automatically discovering the device, click “Add”.



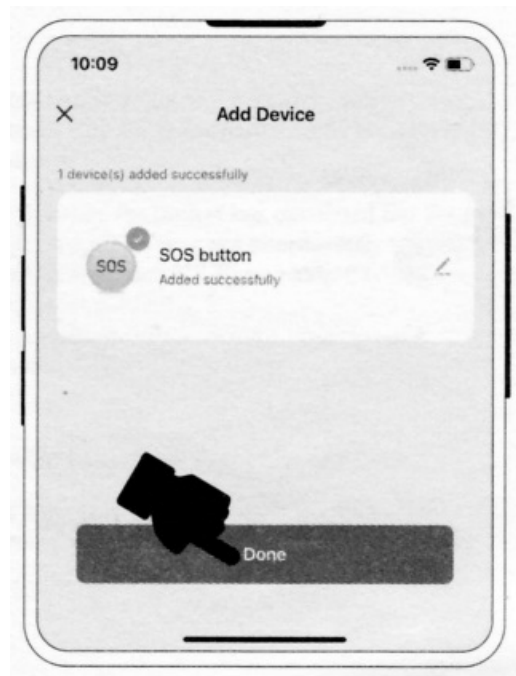
5. Enter WiFi information and password.



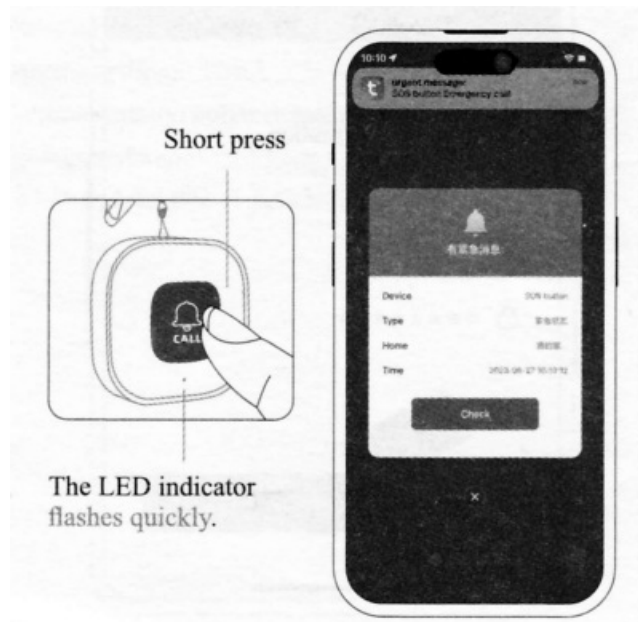
6. Waiting for a successful connection.




7. Successfully connected, click "Done".



Alarm push notification

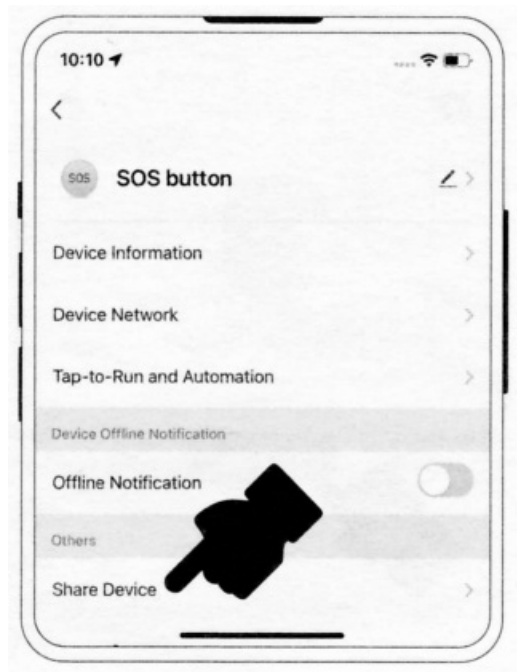


Multi-person sharing

1. Click on the upper right corner 



2. Click "Share Device".



FAQs

- **Q: After configuring the network, trigger the button. The LED indicator light is constantly flashing.**
 1. A: (1) Because the button has exceeded the Wi-Fi range, the alarm was not successfully reported. Need to approach Wi-Fi and stop flashing after successful reporting.
 2. Automatically stop after waiting for 2 minutes.
- **Q: Unable to connect to the mobile app?**
 - A: The button is too far away from the router. Please connect within 1-3 meters of the router.

Technical specifications

- Standby current: 0.1 μ A
- Average current: 12mA
- Internal battery: polymer battery 3.7V/400mAh
- Charging duration: \leq 1 hour
- Wi-Fi 6: 2.4G 802.11 B/G/N20/N40/AX20

Documents / Resources



[tuya ECB-01 Emergency Call Button](#) [pdf] Instructions
ECB-01 Emergency Call Button, ECB-01, Emergency Call Button, Call Button

References

- [User Manual](#)

[Manuals+](#), [Privacy Policy](#)

This website is an independent publication and is neither affiliated with nor endorsed by any of the trademark owners. The "Bluetooth®" word mark and logos are registered trademarks owned by Bluetooth SIG, Inc. The "Wi-Fi®" word mark and logos are registered trademarks owned by the Wi-Fi Alliance. Any use of these marks on this website does not imply any affiliation with or endorsement.